

# SULLIVAN TIRE STURBRIDGE

649 MAIN STREET  
STURBRIDGE, MA

REVISION:	REVISION #
DATE:	REV. BY:
22.08.29	JJV
SUBMITT FOR APPROVAL	

PROJECT:	SULLIVAN TIRE STURBRIDGE
JOB #:	V-1124
ADDRESS:	649 MAIN STREET STURBRIDGE MA
ARCHITECT:	JOHN T. BRENNAN & ASSOCIATES ARCHITECTS
CONTRACTOR:	UPPER RIDGE REALTY
PM:	JJV
DRAWN BY:	JJV
CHECK BY:	JJV

### GENERAL NOTES:

- THESE DRAWINGS ARE BASED UPON VAST GLASS LLC.'S UNDERSTANDING OF THE ARCHITECTURAL DRAWINGS AND SPECIFICATIONS AS RELATED TO OUR SCOPE OF WORK.
- ALL DIMENSIONS TO BE FIELD VERIFIED
- ALL BLOCKING REQUIRED TO BE BY OTHERS
- CONCRETE MUST BE CAPABLE OF CARRYING LOADS AND LEVEL
- VAST GLASS LLC. IS NOT RESPONSIBLE FOR ERRORS MADE BY OTHER TRADES THROUGH THE USE OF THESE SHOP DRAWINGS
- SHOP DRAWINGS ARE THE SOLE PROPERTY OF VAST GLASS LLC.
- ALL OTHER TRADES WORK ASSUMED NOT IN CONTRACT (NIC) I.E.: DRYWALL, DEMO, PAINT, CONCRETE. ETC.

### MATERIALS INFORMATION:

- OLDCASTLE FG-3000 STOREFORNT
- OLDCASTLE NS212 NARROW STILE DOOR
- PORTAL 325TB SLIDING WINDOW

### FINISHES

- OLDCASTLE HARTFORD GREEN.
- PORTAL HARTFORD GREEN.

### SEALANT

- DOWSIL CWS, HARTFORD GREEN.

### GLASS SCHEDULE:

- GL01** 1" INSULATED UNITS WITH EVERGREEN TINT AND ENERGY ADVANTAGE LOW-E COATING ON THE #3 SURFACE, TEMPERED.
- GL02** 1/4" CLEAR TEMPERED

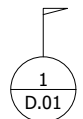
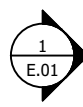
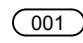




### DRAWING INDEX

C.01	COVER
H.01	DOOR HARDWARE
P.01	FLOOR PLAN
E.01-E.02	ELEVATIONS
D.01-D.03	DETAILS

### ABBREVIATION LEGEND:

- AFF ABOVE FINISH FLOOR
- BO BOTTOM OF
- COC CONCEALED OVERHEAD CLOSER
- CL CENTER LINE
- DO DOOR OPENING
- DS DOOR SIZE
- FD FRAME DIMENSION
- FO FINISHED OPENING
- GC GENERAL CONTRACTOR
- GS GLASS SIZE
- LH LEFT HAND
- NIC NOT IN CONTRACT
- NTS NOT TO SCALE
- OC ON CENTER
- RH RIGHT HAND
- RO ROUGH OPENING
- SIM SIMILAR
- SS STAINLESS STEEL
- TBD TO BE DETERMINED
- TYP TYPICAL
- VIF VERIFY IN FIELD
- WP WORKING POINT

### SYMBOLS LEGEND:

-  DETAIL INDICATION
-  ELEVATION INDICATION
-  DOOR NUMBER
-  WORKING POINT
-  REVISION DELTA
-  GLASS INDICATOR
-  CENTER LINE

**VASTGLASS**  
VASTGLASS.COM  
P.O. BOX 159  
N. SALEM, NH 03073  
(603) 401-5918




SCALE: NTS  
SHEET #: C.01

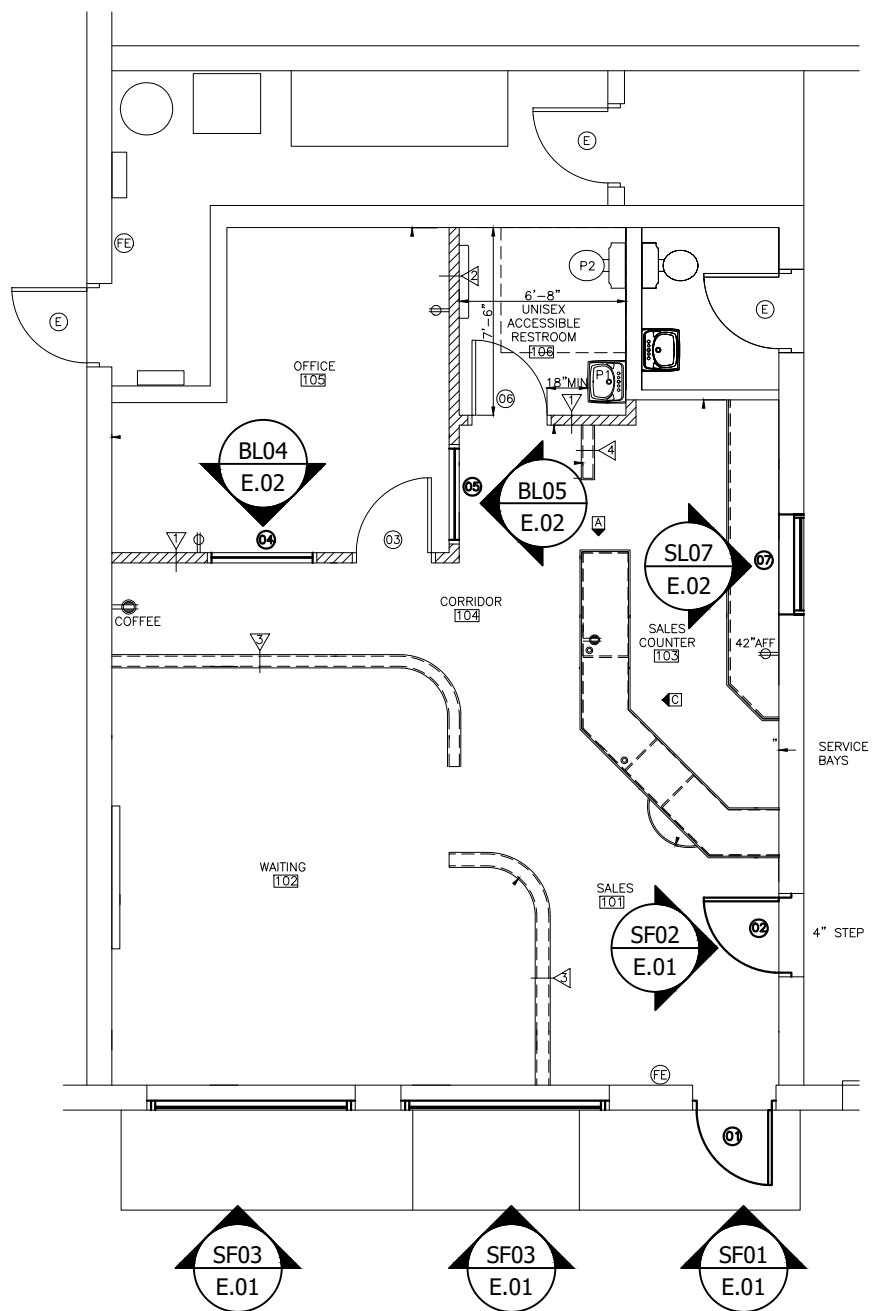
DOOR SF01 (SINGLE) :

- (1) CONTINUOUS GEARED HINGE (CLEAR ANODIZED)
- (1) FIRST CHOICE 3790 RIM PANIC W/ EXTERIOR KEYED CYLINDER (CLEAR ANODIZED)
- (1) SFIC HOUSING AND CONSTRUCTION CORE (FINAL KEYING BY OTHERS)
- (1) OLDCASTLE OFFSET PULL (CLEAR ANODIZED)
- (1) LCN 4040XP SURFACE MOUNTED CLOSER W/ 18PA PLATE MOUNT (ALUMINUM)
- (1) 1 7/8" MID RAIL (HARTFORD GREEN)
- (1) DOOR SWEEP (CLEAR ANODIZED)
- (1) THRESHOLD (MILL)

DOOR SF02 (SINGLE) :

- (1) CONTINUOUS GEARED HINGE (CLEAR ANODIZED)
- (1) ADAMS RITE 1850MS DEADLOCK W/ TWO KEYED CYLINDERS (CLEAR ANODIZED)
- (2) SFIC HOUSING AND CONSTRUCTION CORE (FINAL KEYING BY OTHERS)
- (1) OLDCASTLE OFFSET PUSH/PULL SET (CLEAR ANODIZED)
- (1) LCN 4040XP SURFACE MOUNTED CLOSER W/ 18PA PLATE MOUNT (ALUMINUM)
- (1) 1 7/8" MID RAIL (HARTFORD GREEN)
- (1) DOOR SWEEP (CLEAR ANODIZED)
- (1) THRESHOLD (MILL)

<b>PROJECT:</b> SULLIVAN TIRE STURBRIDGE <b>JOB #:</b> V-1124 <b>ADDRESS:</b> 649 MAIN STREET STURBRIDGE MA <b>ARCHITECT:</b> JOHN T. BRENNAN & ASSOCIATES ARCHITECTS <b>CONTRACTOR:</b> UPPER RIDGE REALTY <b>PM:</b> JJV		<b>DATE:</b> 22.08.29	<b>REVISION:</b> SUBMITT FOR APPROVAL	<b>REV. BY:</b> JJV	<b>REV. #</b>
<b>VASTGLASS</b> VASTGLASS.COM P.O. BOX 159 N. SALEM, NH 03073 (603) 401-5918					
					
SCALE: NTS SHEET #:		<b>H.01</b>			
		<b>DRAWN BY:</b> JJV	<b>CHECK BY:</b> JJV		



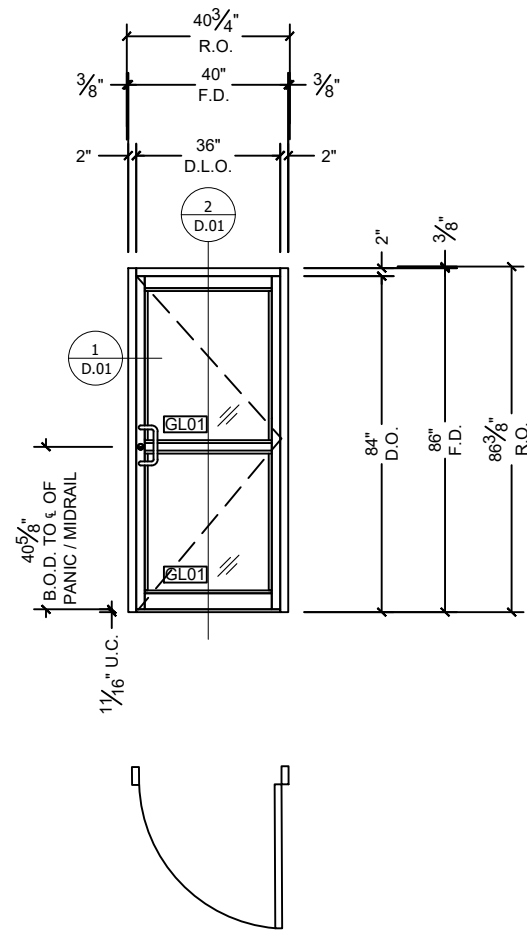
1 FLOOR PLAN  
ARCH REF: SHEET A1

PROJECT:	SULLIVAN TIRE STURBRIDGE	DATE:	22.08.29	REVISION:		REV. BY:	JJV	REV. #	-
JOB #:	V-1124				SUBMITT FOR APPROVAL				
ADDRESS:	649 MAIN STREET STURBRIDGE MA								
ARCHITECT:	JOHN T. BRENNAN & ASSOCIATES ARCHITECTS								
CONTRACTOR:	UPPER RIDGE REALTY								
PM:	JJV	DRAWN BY:	JJV	CHECK BY:	JJV				

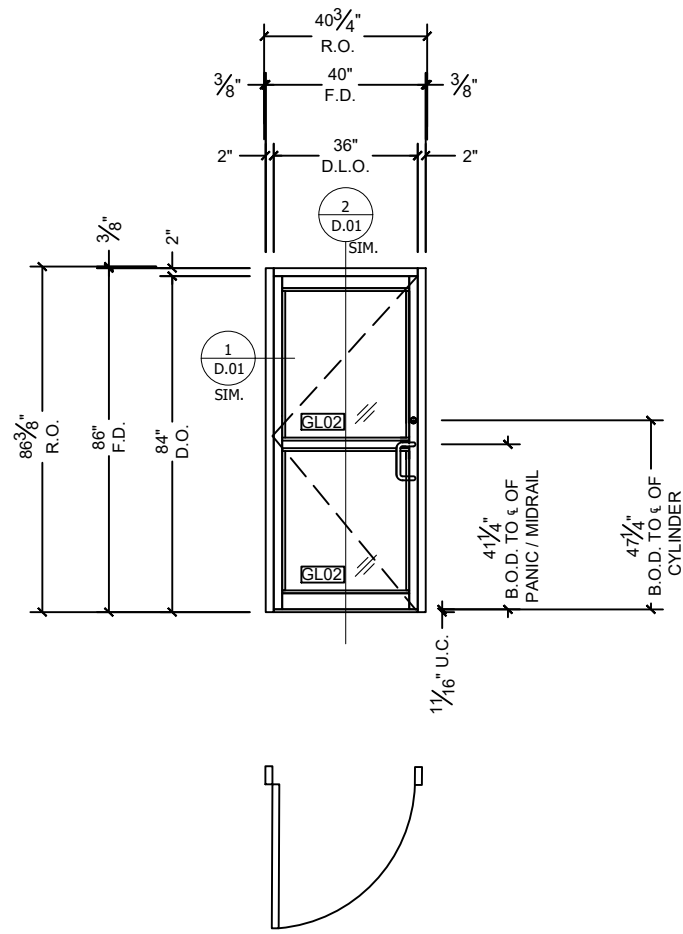
**VASTGLASS**  
VASTGLASS.COM  
P.O. BOX 159  
N. SALEM, NH 03073  
(603) 401-5918



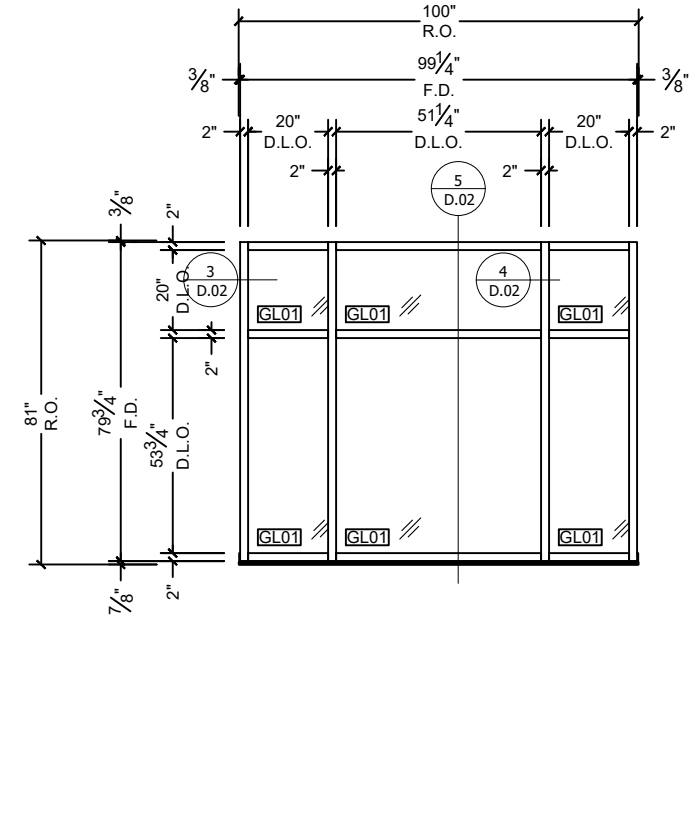
SCALE: NTS  
SHEET #: P.01



**SF01** (1) THUS  
 OLDCASTLE SERIES FG-3000 STOREFRONT DOOR FRAME  
 OLDCASTLE SERIES NS212 NARROW STILE DOOR



**SF02** (1) THUS  
 OLDCASTLE SERIES FG-3000 STOREFRONT DOOR FRAME  
 OLDCASTLE SERIES NS212 NARROW STILE DOOR

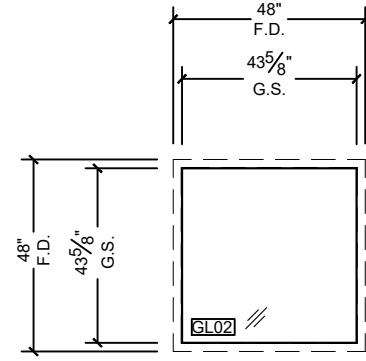


**SF03** (2) THUS  
 OLDCASTLE SERIES FG-3000 STOREFRONT FRAME

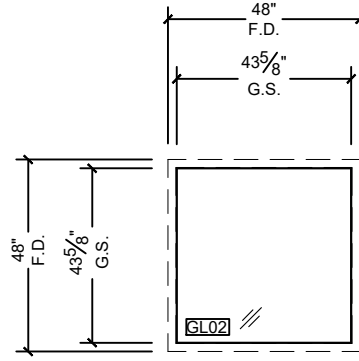
PROJECT:	SULLIVAN TIRE STURBRIDGE	DATE:	22.08.29	REVISION:		REV. BY:	JJV	REV. #	-
JOB #:	V-1124				SUBMITT FOR APPROVAL				
ADDRESS:	649 MAIN STREET STURBRIDGE MA								
ARCHITECT:	JOHN T. BRENNAN & ASSOCIATES ARCHITECTS								
CONTRACTOR:	UPPER RIDGE REALTY								
PM:	JJV	DRAWN BY:	JJV	CHECK BY:	JJV				

**VASTGLASS**  
 VASTGLASS.COM  
 P.O. BOX 159  
 N. SALEM, NH 03073  
 (603) 401-5918

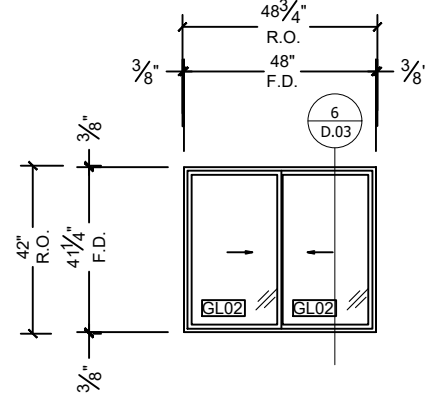




**BL04** (1) THUS  
-1/4" CLEAR TEMPERED



**BL05** (1) THUS  
-1/4" CLEAR TEMPERED



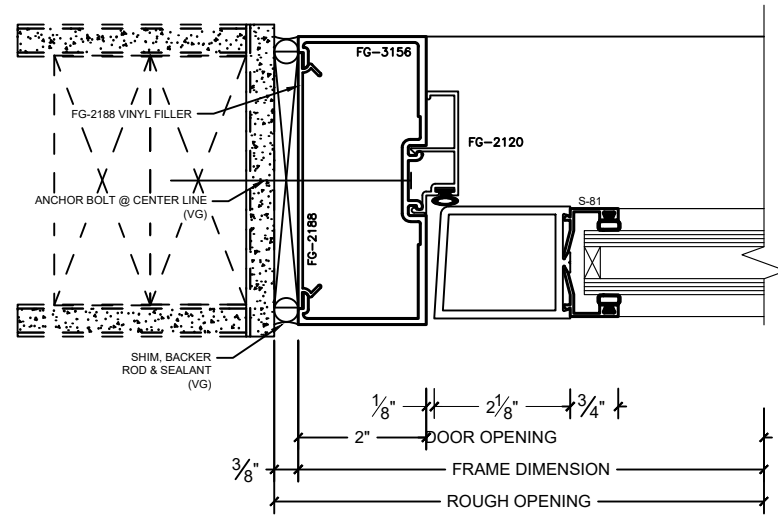
**SL07** (1) THUS  
-PORTAL 325TB SLIDER



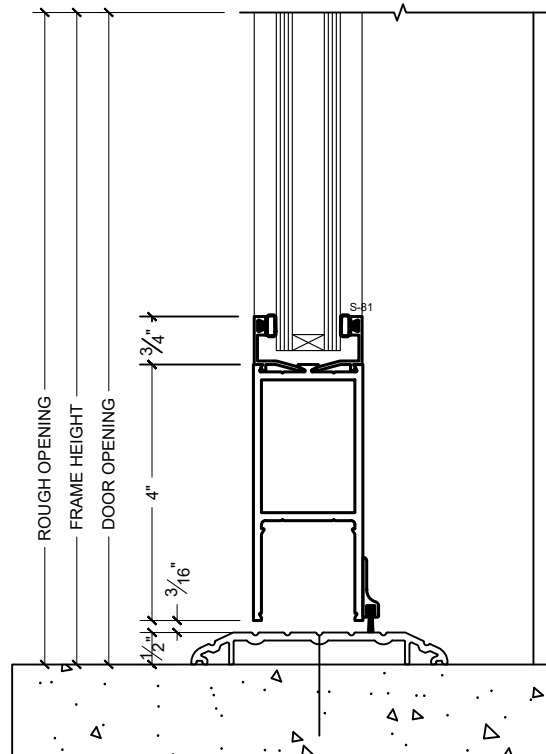
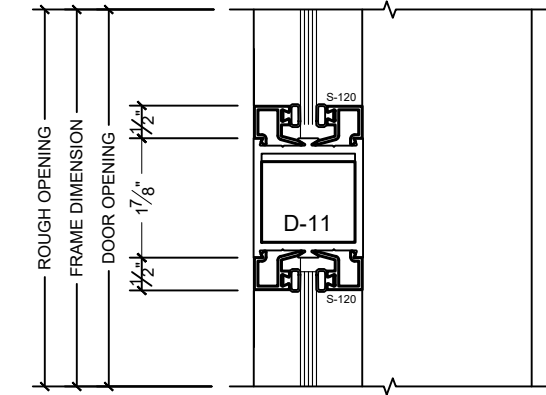
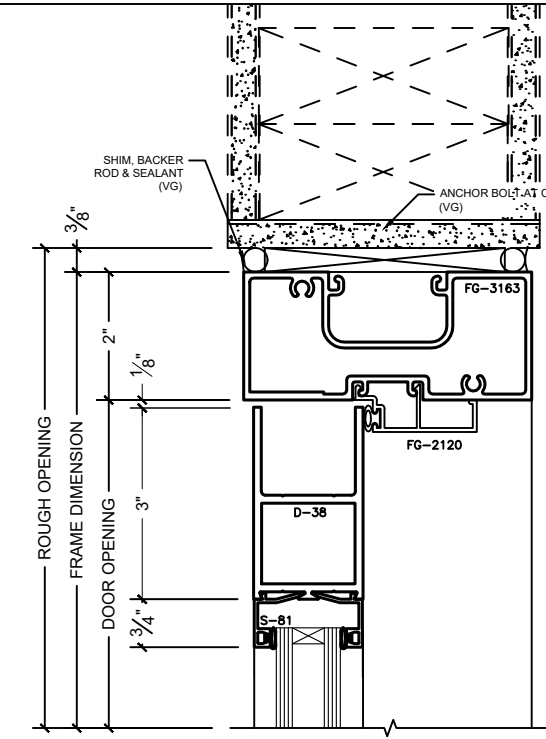
**VASTGLASS**  
VASTGLASS.COM  
P.O. BOX 159  
N. SALEM, NH 03073  
(603) 401-5918

PROJECT: SULLIVAN TIRE STURBRIDGE  
JOB #: V-1124  
ADDRESS: 649 MAIN STREET STURBRIDGE MA  
ARCHITECT: JOHN T. BRENNAN & ASSOCIATES ARCHITECTS  
CONTRACTOR: UPPER RIDGE REALTY  
PM: JJV DRAWN BY: JJV CHECK BY: JJV

DATE:	REVISION:	REV. BY:	REV. #
22.08.29	SUBMITT FOR APPROVAL	JJV	-



1 DOOR JAMB

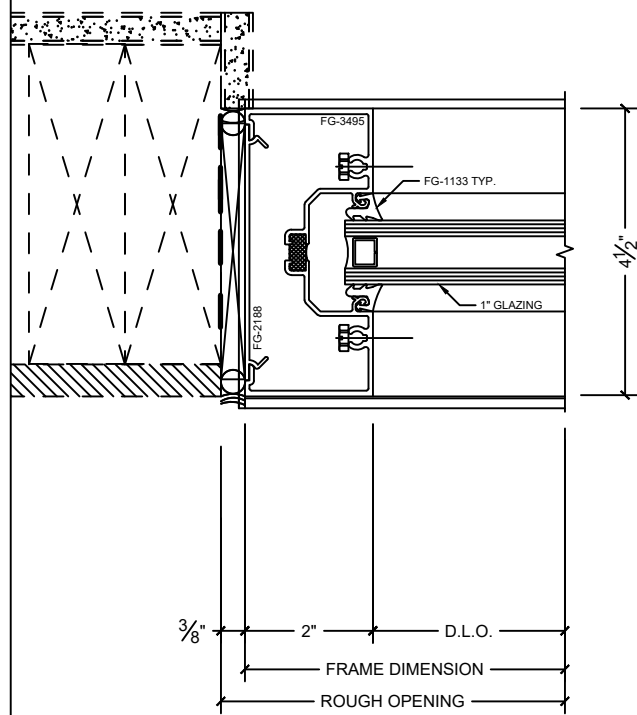


2 VERTICAL SECTION

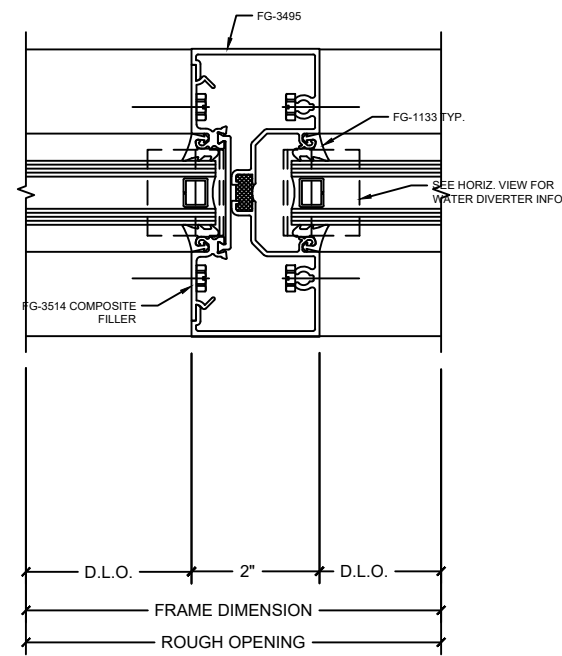
PROJECT:	SULLIVAN TIRE STURBRIDGE	DATE:	22.08.29	REVISION:		REV. BY:	JJV	REV. #	
JOB #:	V-1124	DATE:	22.08.29	REVISION:	SUBMITT FOR APPROVAL	REV. BY:	JJV	REV. #	
ADDRESS:	649 MAIN STREET STURBRIDGE MA	DATE:		REVISION:		REV. BY:		REV. #	
ARCHITECT:	JOHN T. BRENNAN & ASSOCIATES ARCHITECTS	DATE:		REVISION:		REV. BY:		REV. #	
CONTRACTOR:	UPPER RIDGE REALTY	DATE:		REVISION:		REV. BY:		REV. #	
PM:	JJV	DATE:		REVISION:		REV. BY:		REV. #	
		DATE:		REVISION:		REV. BY:		REV. #	
		DATE:		REVISION:		REV. BY:		REV. #	
		DATE:		REVISION:		REV. BY:		REV. #	
		DATE:		REVISION:		REV. BY:		REV. #	

**VASTGLASS**  
 VASTGLASS.COM  
 P.O. BOX 159  
 N. SALEM, NH 03073  
 (603) 401-5918

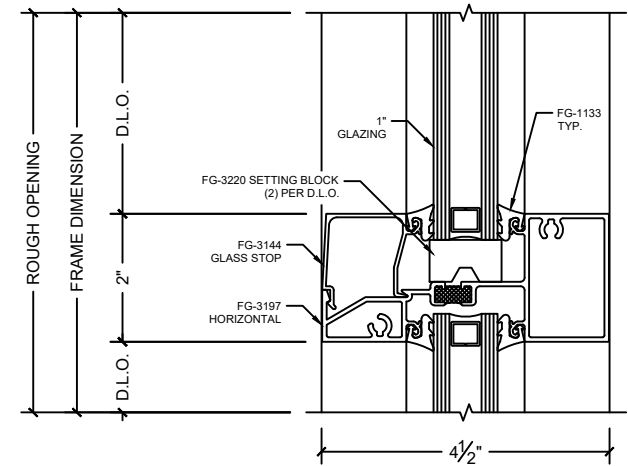
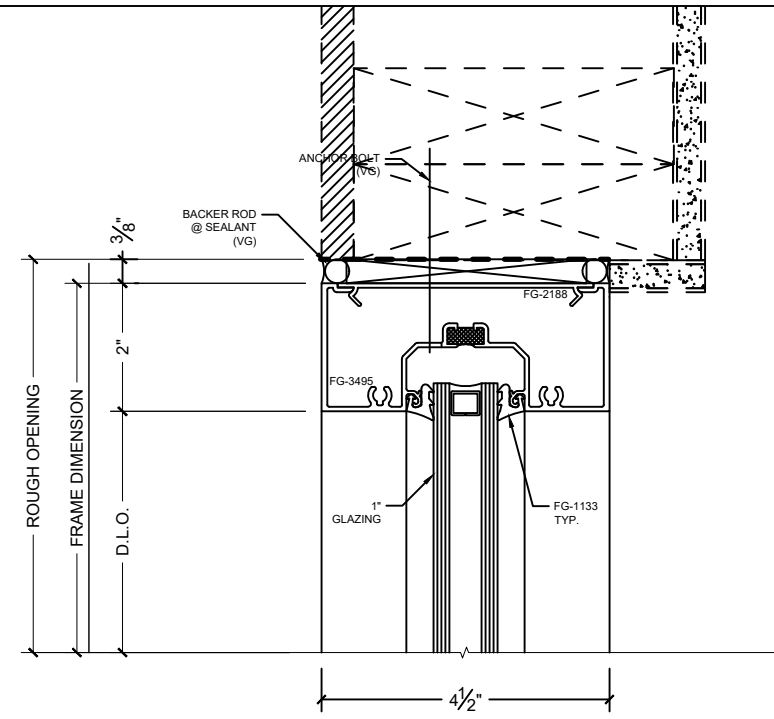




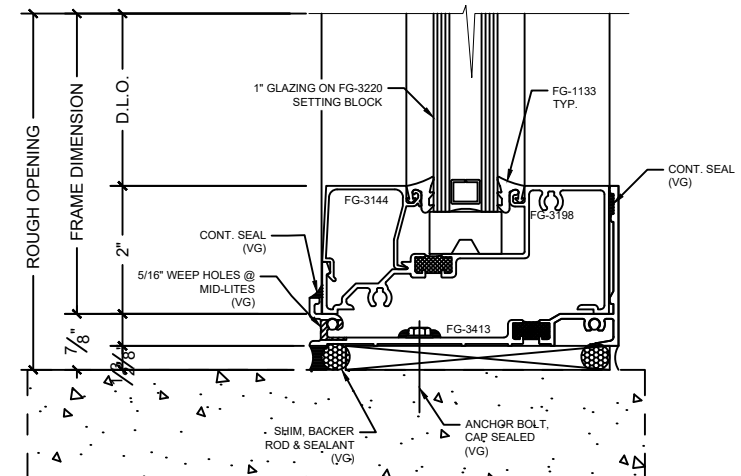
3 JAMB



4 INTERMEDIATE MULLION



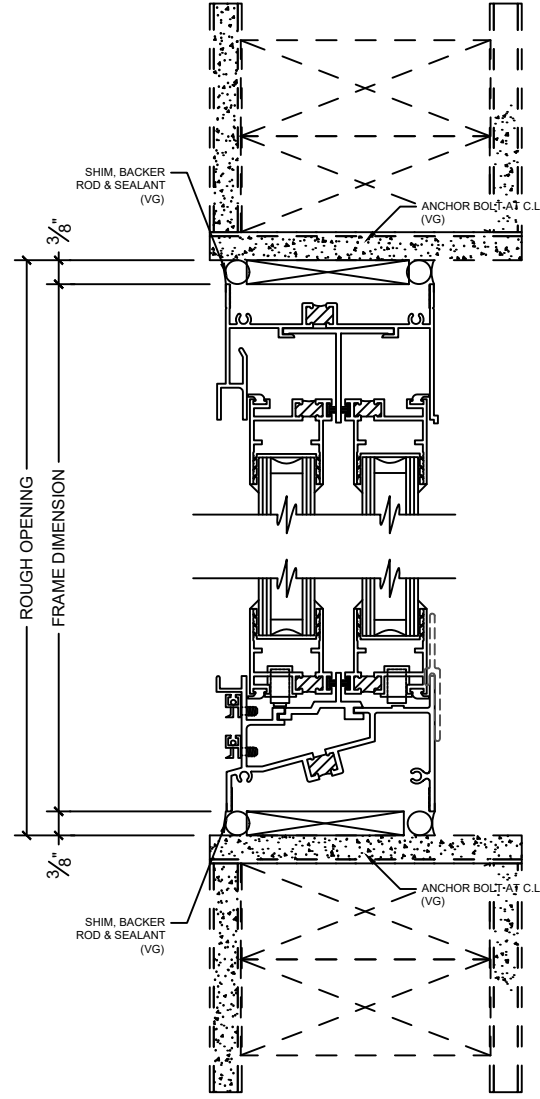
5 VERTICAL SECTION



PROJECT:	SULLIVAN TIRE STURBRIDGE	DATE:	22.08.29	REVISION:		REV. BY:	JJV	REV. #	
JOB #:	V-1124				SUBMITT FOR APPROVAL				
ADDRESS:	649 MAIN STREET STURBRIDGE MA								
ARCHITECT:	JOHN T. BRENNAN & ASSOCIATES ARCHITECTS								
CONTRACTOR:	UPPER RIDGE REALTY								
PM:	JJV	DRAWN BY:	JJV	CHECK BY:	JJV				

**VASTGLASS**  
 VASTGLASS.COM  
 P.O. BOX 159  
 N. SALEM, NH 03073  
 (603) 401-5918





6 VERTICAL SECTION

SCALE: 4" = 1'0"  
SHEET #: D.03



**VASTGLASS**  
VASTGLASS.COM  
P.O. BOX 159  
N. SALEM, NH 03073  
(603) 401-5918

PROJECT: SULLIVAN TIRE STURBRIDGE  
JOB #: V-1124  
ADDRESS: 649 MAIN STREET STURBRIDGE MA  
ARCHITECT: JOHN T. BRENNAN & ASSOCIATES ARCHITECTS  
CONTRACTOR: UPPER RIDGE REALTY  
PM: JJV DRAWN BY: JJV CHECK BY: JJV

REVISION:	DATE:	REV. BY:	REV. #
SUBMITT FOR APPROVAL	22.08.29	JJV	-