

EBT Environmental Consultants, Inc.
GLENN E. KREVOSKY, CONSULTANT

601 Main Street
North Oxford, MA 01537
glenn.krevosky@charter.net
Cell: (508)769-3659 Office: (508)987-0979

July 16, 2020

Rebecca Gendreau
Sturbridge Conservation Commission
301 Main Street
Sturbridge, MA 01566

Re: 205B & 205C Podunk Pike, Sturbridge – Wetland Report

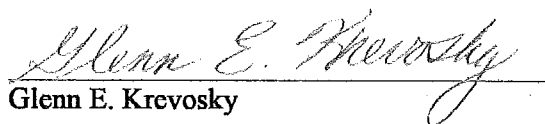
Dear Commission:

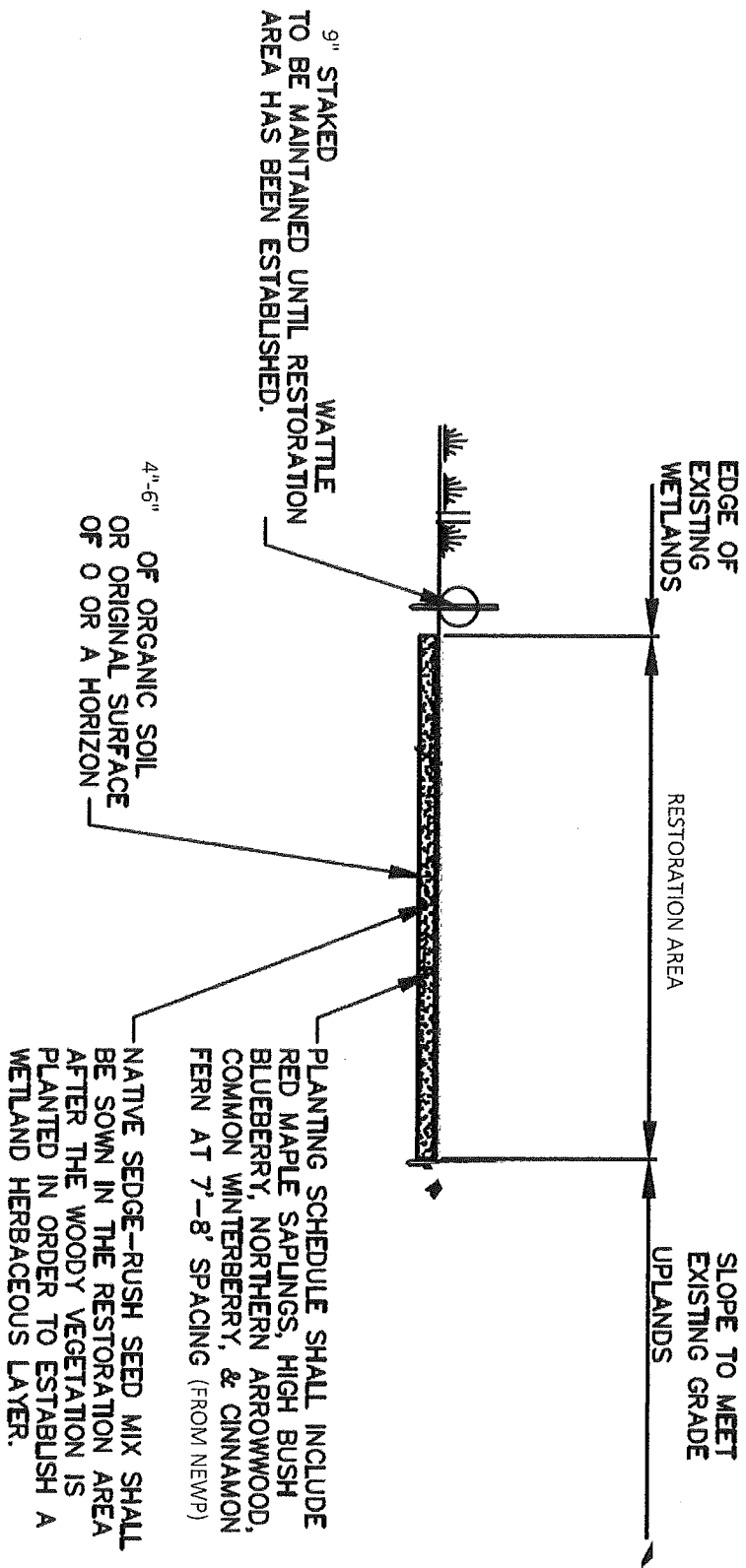
Glenn E. Krevosky of EBT Environmental Consultants, Inc. delineated the wetland boundaries on 6/7/2020 with the below listed wetland flags, utilizing soils, vegetation, and indicators of hydrology according to 310 CMR 10.55 (2) (c). Soil descriptions on orange flags upgradient and downgradient of the delineation lines describing dominant soil matrix in the B Horizon are in the field.

8 A Series Wetland Flags	4 F Series Wetland Flags
12 B Series Wetland Flags	4 G Series Wetland Flags (IVW)
3 C Series Wetland Flags	18 H Series Wetland Flags
29 D Series Wetland Flags	14 I Series Wetland Flags
11 E Series Wetland Flags (IVW)	

There is no Priority Habitats of Rare Species or Estimated Habitats of Rare Species on the subject parcels and there is no Riverfront Area on the subject parcels. The restoration of wetlands and 25' upland buffer is detailed on the site plan.

Sincerely,

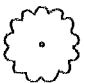






Glenn E. Krevosky

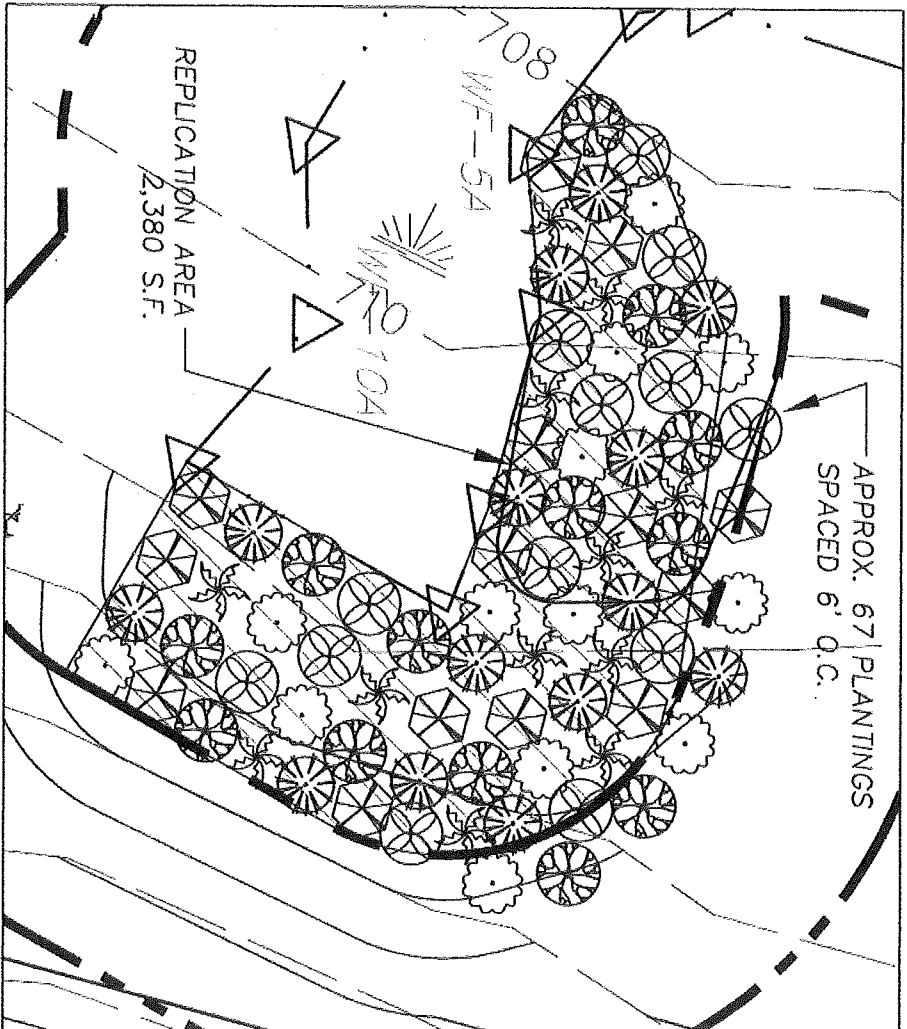


WETLAND RESTORATION DETAIL

NOT TO SCALE
BY EBT, INC.

LEGEND

-  RED MAPLE (*ACER RUBRUM*)
-  CINNAMON FERN (*OSMUNDA CINNAMOMIA*)
-  NORTHERN SPICEBUSH (*LINDERA BENZONI*)
-  COMMON WINTERBERRY (*ILEX VERTICILLATA*)
-  NORTHERN ARROWWOOD (*VIORNIUM RECOGNITUM*)
-  NATIVE HIGHBUSH BLUEBERRY (*VACCINIUM CORYMBOSUM*)



WETLAND REPLICATION AREA PLANTINGS