

LOCUS MAP
1"=2000'

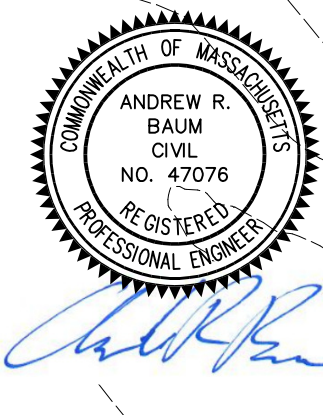
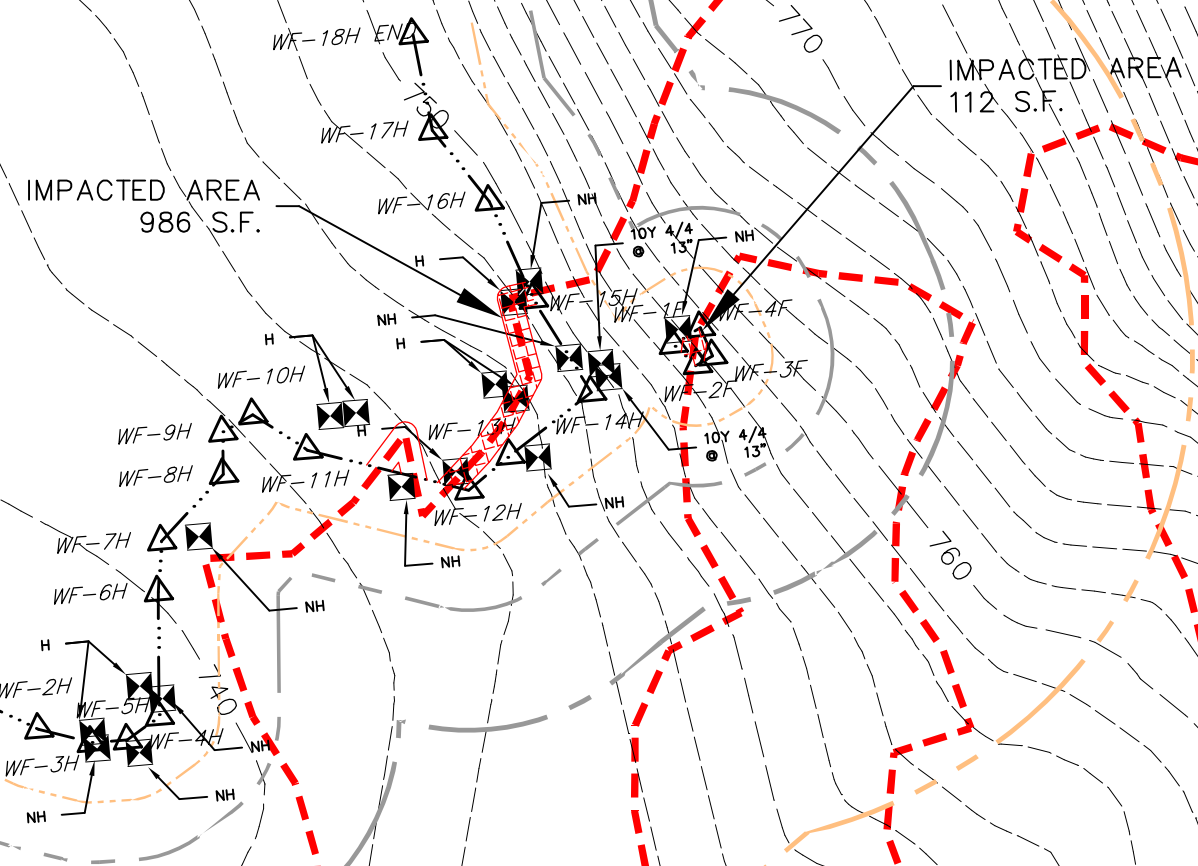
N/F IRIS JENNINGS
ASSESSORS MAP 15
PARCEL B-4

N/F IRIS JENNINGS
ASSESSORS MAP 518
PARCEL 835-205C

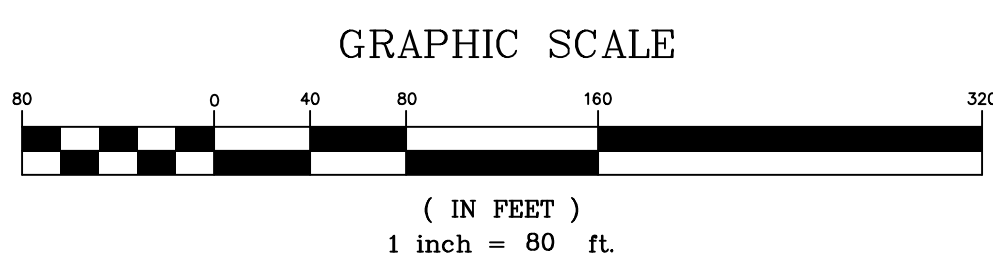
N/F BRANT JENNINGS
ASSESSORS MAP 518
PARCEL 835-205B

LEGEND

EXISTING	DESCRIPTION
(Symbol)	INDEX CONTOUR
(Symbol)	INTERMEDIATE CONTOUR
(Symbol)	SPOT ELEVATION
(Symbol)	STONE WALL
(Symbol)	EDGE OF WATER BODY
(Symbol)	100 YEAR FLOOD LINE
(Symbol)	EDGE OF WETLAND
(Symbol)	50' BUFFER
(Symbol)	100' BUFFER
(Symbol)	200' BUFFER
(Symbol)	WETLAND FLAG
(Symbol)	WETLAND FLAG
(Symbol)	RIVER/STREAM
(Symbol)	100' RIVER BUFFER
(Symbol)	200' RIVER BUFFER
(Symbol)	WELL
(Symbol)	TREE
(Symbol)	BRUSH
(Symbol)	DRILL HOLE
(Symbol)	IRON NAIL
(Symbol)	BENCHMARK
(Symbol)	PERC TEST
(Symbol)	TEST PIT
(Symbol)	SOIL BORING
(Symbol)	EDGE OF GRAVEL
(Symbol)	EDGE OF PAVEMENT
(Symbol)	EX. "RED TRAIL"
(Symbol)	EX. "YELLOW TRAIL"



- NOTES:**
1. PURPOSE OF THIS PLAN IS TO SHOW DELINEATED WETLANDS IN RELATION TO THE TRAIL NETWORK AT 508 INTERNATIONAL AS REQUIRED BY THE STURBRIDGE CONSERVATION COMMISSION.
 2. WETLANDS SHOWN WERE DELINEATED BY EBT ENVIRONMENTAL, INC. IN JUNE 2020 AND LOCATED BY SUMMIT ENGINEERING, INC. IN JUNE 2020 VIA RTK GPS.
 3. BOUNDARY INFORMATION SHOWN TAKEN FROM MASS GIS AND ARE NOT THE RESULT OF A BOUNDARY SURVEY.
 4. TOPOGRAPHY SHOWN IS EXTRACTED FROM GOOGLE EARTH WITH A 10 FOOT X 10 FOOT SAMPLE GRID.
 5. ELEVATIONS AND HORIZONTAL ALIGNMENT ARE BASED UPON MASS STATE PLANE, NAD 83.



WETLAND LOCATION PLAN
at
508 INTERNATIONAL
STURBRIDGE, MA
PREPARED FOR
508 BASE, LLC

REVISIONS

SUMMIT
Engineering & Survey, Inc.
710 MAIN STREET
NORTH OXFORD, MA 01537
P:(508) 987-8713 F:(508) 987-8714

SCALE:	1" = 80'
DATE:	JULY 16, 2020
JOB NO.:	20-228
PLAN NO.:	20-228 WETLAND LOCATION
SHEET NO.:	1 OF 1