

Dining, Shopping, Accommodations, Historical Attractions, Recreation



Complimentary 2019-2020

*Welcome to*  
**Sturbridge**  
MASSACHUSETTS





Publick



House

## Historic Inn & Country Lodge

*Listed in the National Register of Historic Places*



## COME EXPERIENCE TRUE Yankee Hospitality

### *Our Guest Services & Amenities*

- ▀ 2 Restaurants
- ▀ Bakery & Yankee Gift Shop
- ▀ 11 Private Banquet Rooms for 8–275 guests
- ▀ 115 Overnight Guest Rooms
- ▀ Outdoor Pool
- ▀ 2 Gazebos
- ▀ Complimentary Wireless Internet Access
- ▀ 1 Hour from Boston & Rhode Island, 45 minutes from Hartford, and 20 minutes from Worcester

On The Common, Route 131, 277 Main St.  
Sturbridge, MA 01566

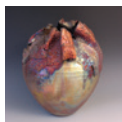
Phone 508-347-3313 • Toll Free 800-782-5425

[www.publickhouse.com](http://www.publickhouse.com)

# Sturbridge Pottery

*Master Craftsmen: Gary & Ann Malone*

Since 1976, Gary & Ann Malone have been perfecting stoneware and porcelain pottery with incredibly unique high fire reduction glazes. Each piece is hand thrown at the potters wheel or masterfully handbuilt with care.



The gallery displays a variation of bowls, vases, platters, lamps, canister sets, pitchers, mugs and much more.

*Visit the working clay studio and new outside gallery.*



New Boston Rd. Sturbridge, MA 01566

508-347-9763 • [www.sturbridgepottery.com](http://www.sturbridgepottery.com) • Hours: open daily 9-5pm

## **REB** *Products* *trinkets & treasures*

*Offering Unique Items,  
Many Handmade & Made in the USA*  
Jewelry • Handbags • Wallets • Scarves

Soaps • Sprays & Candles  
**Baby Items** - Clothing, Handmade Sweater Sets,  
Shoes, Hats, Stuffed Animals & Blankets

*REB is a Little Shop Catering to our Clientele*

*Sturbridge Marketplace  
559 Main Street, Sturbridge, MA  
508-347-0050*

WEDNESDAY-SATURDAY • 10:00AM - 4:00PM





# Welcome

The Sturbridge Tourist Association would like to welcome you to the Town of Sturbridge, a community with deep ties to its historic roots and with modern amenities that will make every minute of your time here an enjoyable one. In a Town with a rich offering of entertainment, there's something here for everyone to enjoy. Our moto here in Sturbridge is, "Shop. Eat. Stay. Play."

**Shop** – With dozens of merchant shops we sell everything from antiques to model trains and everything in between.

**Eat** – Featuring over forty restaurants with cuisine from around the world, as well as family friendly options, our award winning chefs will provide you with a meal that you will never forget. We also have an expanding group of local microbrewers who are tapping into the growing craft beer market for you to sample.

**Stay** – You can spend the day exploring our wonderful community and then rest and relax in one of our over eight-hundred hotel rooms. You can also stay at one of our campgrounds featuring hundreds of outdoor camp sites. With a variety of options you are guaranteed to find a place that fits your needs.

**Play** – Hosting the historic Old Sturbridge Village, a recreation of a 19th century Massachusetts town, you can come see the history of Massachusetts first hand. Beyond the village, our Town offers miles of forest trails to explore and entertainment venues offering live music, plays, and lectures. There is something for everyone of all ages to enjoy.

With all of these possibilities, we invite you to shop, eat, stay and play in Sturbridge. Over nine thousand of us have chosen to live and raise our families here in Sturbridge; we invite you to come see why.

Sincerely,

Sturbridge Tourist Association

**To Advertise in the  
2020 Sturbridge Area Guide  
call 860-963-0414.**

Photo courtesy of OSV

This publication is  
Published & Distributed by:

**GDP**

GLOBAL DESIGN & PUBLISHING LLC

860-963-0414 • [kelly@gdpublishing.com](mailto:kelly@gdpublishing.com)  
[www.gdpublishing.com](http://www.gdpublishing.com)

**Design/Photography:** Jim Tourtellotte • **Marketing & Sales:** Kelly Tourtellotte • **Writer/Editor:** Cris Cadiz  
All design and text is provided by Global Design & Publishing, LLC.  
All text and images have been carefully compiled for this publication.  
However, we do not guarantee the accuracy of the content.  
**Photos provided by Global Design & Publishing, LLC (Unless otherwise noted).**

Copyright ©2019, Global Design & Publishing, LLC. Any reproduction without our written permission is prohibited.





### The Last Green Valley

The towns of Sturbridge, Southbridge and Charlton are part of The Last Green Valley National Heritage Corridor, which was recognized by Congress in 1994 as a unique national resource. The Last Green Valley Inc. is a non-profit that helps preserve the historic, cultural and natural treasures of this region while encouraging appropriate economic development. They are involved in everything from helping save farmland and open space to funding grants for local organizations to creating and sponsoring popular regional annual events, such as Walktober. [www.thelastgreenvally.org](http://www.thelastgreenvally.org)



### The Sturbridge Tourist Association

is comprised of shops, taverns, and inn-keepers, civic leaders, professionals and townfolk interested in revitalizing Sturbridge and promoting its character and charm. [www.visitsturbridge.org](http://www.visitsturbridge.org)



### The Central Mass South Chamber

is the leading advocate for local business, promotes the success of its members and enhances regional prosperity through networking, education, and promotion. [www.cmschamber.org](http://www.cmschamber.org)



### Sturbridge Townships

A travel and tourism website. Sturbridge is at the center of eleven towns that are filled with unique places and experiences collectively called the Sturbridge Townships. [www.sturbridgetownships.com](http://www.sturbridgetownships.com)



## INSIDE

6-8	Good Eats	23-26	The Great Outdoors
10-13	Shops & Services	27	Orchards & More
13	Weddings & Events	28	Arts & Entertainment
14	Accommodations	29-30	Historical Attractions
16-19	Breweries & Wineries	31	Calendar of Events
20-22	Trails Map & Information		

# Good Eats

Sturbridge's Main Street is known about the region as a place to find a wealth of restaurants. The variety is wide and offers something for every palate. You can find Thai, Japanese, Italian and traditional American fare. From fine dining to pizza to quaint cafes, Sturbridge has it all.

You can also dine in historic settings such as the Publick House Historic Inn—listed in the National Register of Historic Places—or The Duck and The Oxhead Tavern. Every structure has a story, so be sure to ask if you are interested!



Photo courtesy of Cedar Street Grille

## FEATURED DINING

### STURBRIDGE

**Avellino** ([www.avellinorestaurant.com](http://www.avellinorestaurant.com)) Avellino at the Whistling Swan—Experience open-kitchen dining featuring traditional Italian cuisine prepared by Chef Rico Giovanello. Every great meal begins with an inspired menu, the highest quality ingredients, and a talented chef.

### *Cedar Street Grill*

([www.cedarstreetgrill.com](http://www.cedarstreetgrill.com))

redefines the American Bistro concept—an extraordinary menu that features robust dishes and small plates in a casual, comfortable atmosphere.



### *Cedar Street Cafe*

([www.cedarstreetcafesturbridge.com](http://www.cedarstreetcafesturbridge.com)) offers innovative and creative fare for morning and lunch dining. The café features indoor dining in the beautifully



Avellino/The Duck

renovated Alpheus Wight farmhouse and outdoor dining on the patio, all centrally located at The Collection at Wight Farm.

**The Duck** ([www.theducksturbridge.com](http://www.theducksturbridge.com)) For more than 30 years, one of Sturbridge's favorite restaurants. Relaxed and casual dining and entertainment.



**Jimmy D's Ice Cream & Sandwich Shop**, 774-304-1023, Twist & Shout at this 50's-themed Ice Cream & Sandwich



# Jimmy D's

Ice Cream & Sandwich Shoppe

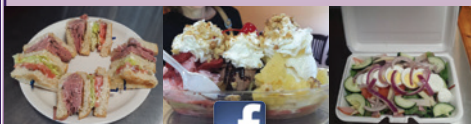
413 Main St. Sturbridge, MA

*Twist & Shout at our 50's Themed  
Ice Cream & Sandwich Shop*

*Featuring*

Soups • Salads • Sandwiches  
Paninis • Kid's Menu • Ice Cream  
Frozen Yogurt • Gluten Free Items and  
Non-Dairy Ice Cream

*Dine inside or out on the patio*



413 Main Street, Sturbridge, MA  
Phone: 774-304-1023

STURBRIDGE



## COFFEE HOUSE

eats • catering • events • community



407B Main Street  
Sturbridge, MA 01566  
508.347.2288

[www.sturbridgecoffeehouse.com](http://www.sturbridgecoffeehouse.com)



Where culinary ingenuity comes to  
life. A casual, comfortable atmosphere  
perfect for sharing, exploration and  
the celebration of food.

[cedarstreetgrille.com](http://cedarstreetgrille.com)

(508) 347-5800 | 12 Cedar St., Sturbridge



Traditional, homemade  
Italian cuisine in a setting that  
unites old and new for a  
truly memorable experience.

[avellinorestaurant.com](http://avellinorestaurant.com)

(508) 347-2321 | 502 Main St., Sturbridge



A unique barn loft restaurant  
with all your favorites.

Entertainment

Thursday-Saturday Evenings.

[theducksturbridge.com](http://theducksturbridge.com)

(508) 347-2321 | 502 Main St., Sturbridge



Handcrafted coffees, scratch made pastries,  
creative, fresh breakfast and lunch items and more.

[facebook.com/cedarstreetcafe](https://facebook.com/cedarstreetcafe) | (508) 347-5800

12 Cedar St., Sturbridge



Personalized weddings and events  
in an idyllic country setting.

[t3chefs.com](http://t3chefs.com) | (774) 241-8450

420 Main St., Sturbridge



TABLE 3 RESTAURANT GROUP

[www.table3restaurantgroup.com](http://www.table3restaurantgroup.com)



# Check out the Farmers Market!

Sundays 9am - 1pm from June 9th - October 6th.

Shop. Serves sandwiches, salads, soups, panini's, Hershey's ice cream and frozen yogurt. Dine inside or out on the patio. Find them on Facebook!



## *Oliver Wight Tavern at Old Sturbridge Village*

([osv.org/owtavern](http://osv.org/owtavern)) The Oliver Wight Tavern serves Sunday brunch in four distinct rooms, each featuring working fireplaces. Brunch is offered year-round on Sunday from 10 a.m. to 2 p.m.



## *Oxhead Tavern* ([www.sturbridgehosthotel.com](http://www.sturbridgehosthotel.com))

This historic building is a casual family restaurant and bar that serves everything from traditional Massachusetts scrod to thick steaks. The Oxhead Tavern serves lunch and dinner plus seasonal lakeside dining.



## *Public House Historic Inn*

([www.publichouse.com](http://www.publichouse.com)) delicious homemade food, generous meals Yankee hospitality and historic Colonial American setting. The Public House also offers a coffee shop with fresh baked goods and Ebenezer's Tavern.

## *Sturbridge Coffee House*

([www.sturbridgecoffeehouse.com](http://www.sturbridgecoffeehouse.com)) A wonderful place to sip coffee or tea in a comfortable setting. Soups, salads, sandwiches and hot meals available!

## *The Sturbridge Farmer's Market*

([www.visitsturbridge.org](http://www.visitsturbridge.org)) 2019 Market Season, Sundays 9am - 1pm from June 9th - October 6th.

## *Explore dining options in nearby Woodstock, CT* ([www.explorewoodstock.com](http://www.explorewoodstock.com))

The Mansion at Bald Hill & The Inn at Woodstock Hill (upscale), Java Jive, Sherwoods Restaurant & Bar, Sweet Evelina's Stand (outdoor seating available), Soleil & Sun's Bakery and more! Farm to Table Market offers ice-cream in season.

## ADDITIONAL RESTAURANTS TO CONSIDER:

Thai Place, B.T.'s Smokehouse, Sunburst Restaurant, Sturbridge Seafood, Sturbridge Porter House, Shade's Lounge, Enrico's, Empire Village, Soup to Nuts, The Copper Stallion, Annie's Country Kitchen, Rovezzi's, Kaizen Sushi Bar & Grill & BaBa Sushi.



## EXPLORE THE CHARM OF WOODSTOCK, CT



[explorewoodstock.com](http://explorewoodstock.com)

**Brush it Off** PAINT & SIP BAR  
Wine & Beer

*Come Paint with us!*

See our calendar for  
walk-in hours & classes  
**CANVAS, RESIN FRAMES**  
**PLASTER, CERAMICS**  
**WOOD SHAPES, GLASS**  
and more!

**GALS NIGHT**  
**Open Paint**  
**Mommy & Me**  
**Bachelorette**  
**Bridal & Baby**  
**Showers**  
**BIRTHDAYS!**



travel & private parties too!

**[www.brush-it-off.com](http://www.brush-it-off.com)**

Sturbridge Marketplace: 559 Main St.,  
Rt. 20, Sturbridge, MA 01518

## *Fine Lines Carves*



**We bought a CNC Machine, see what we can do!**

- Maps of Cape Cod and the Islands
- Cheese and bread boards
- Plaques
- Wedding Gifts
- Signage and so much more!

Fine Lines Cabinetry features custom wood cabinetry and furniture for the home, office and business.

4 Old Stagecoach Road | Sturbridge, MA 01566 | 508.347.3655  
[www.finelineswood.com](http://www.finelineswood.com) | [www.facebook.com/finelinescarves](http://www.facebook.com/finelinescarves)



# Shops & Services

The merchants of Sturbridge offer a very diverse array of retail and services, especially along the towns' bustling Main Streets. Shoppers can find everything from antique shops to jewelry and clothing stores to home and garden décor and much, much more. The nearby town of Woodstock CT, also offer unique, locally owned shops, boutiques and services worth exploring.

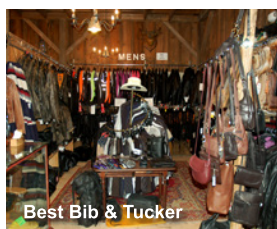


Chickadees

## STURBRIDGE, MA

**Alternatives for Health Herbal Apothecary**, ([www.alternatives4health.com](http://www.alternatives4health.com)) supplying a wide variety of herbal products plus offering bodywork (massage, Reiki, detoxification, etc.) and classes and workshops.

**The Brimfield Antique Show** ([www.brimfield.com](http://www.brimfield.com)) is New England's largest outdoor show and is held three times a year. Dealers, vendors and antique lovers come from across the country to attend. Held every May, July & September.



Best Bib & Tucker

**Best Bib & Tucker**, (800-225-9406) for 30 years...a unique leather clothing, shoes and accessories shop, including motorcycle gear and clothing.

**Chickadees, 425 Main Street** Featuring local crafters, bird baths, houses and feeders, garden statuary, wind chimes, seasonal potted plants, original photographs and wall hangings, stained glass pieces, needlework, distinctive jewelry creations, and more!

**Fine Lines Furniture**, ([www.finelineswood.com](http://www.finelineswood.com)) Custom furniture, cabinetry and accent pieces built to your specifications.

**Fine Lines Carves**, ([www.finelineswood.com](http://www.finelineswood.com) and on Facebook; [finelinescarves](http://finelinescarves)) Features custom wood carved gifts such as island maps, plaques, bread & cheese boards, and more!





Sturbridge Antique shops

### *Garieri Jewelers,*

([www.garieri.com](http://www.garieri.com))

Offering diamonds, fine and custom jewelry and jewelry repair done onsite. Carries Pandora, Movado & Alex and Ani.



Handmaiden Décor

### *Home Décor at The Handmaiden,*

([www.handmaidendecor.com](http://www.handmaidendecor.com)) A country store filled with everything beautiful for your home! Curtains, candle pillars, candles, table runners, country primitive, housewares, quality faux flowers, farm house style decor & so much more.

**Old Sturbridge Village Gift Shop and New England Book Store,** ([www.osv.org/shopping](http://www.osv.org/shopping)) The Old Sturbridge Village Gift Shop and New England Bookstore feature a wide array of New England-themed books and merchandise. Village-made pottery and tin products are also available at the shop.



REB Products

**Past To Present Antiques,** 572 Main Street (Route 20) Fiskdale/Sturbridge. Featuring glass, china, military, furniture, pottery, toys, jewelry, lamps, toys, books and much more!

**The Quilt & Cabbage,** (508-347-3023) Quilting supplies, fabric, books, gifts and more.

### **REB Products - Trinkets & Treasures,**

Located in the **Sturbridge Marketplace**, features unique jewelry including vintage items, Swarovski Crystal rings & bracelets, beads, charms, chains, handbags, wallets and lots of bling bling!



**Sadie Greens**, ([www.sadiegreens.com](http://www.sadiegreens.com)) Two locations on Main Street: Sadie Green's Curiosity Shop: Jewelry and gifts. Sadie Green's Emporium: jewelry making supplies, plus art supplies & more.

**Saint Anne Shrine Gift Shop**, ([www.stannestpat.org](http://www.stannestpat.org)) provides a large selection of Christian items for the home, special occasions, weddings, anniversaries, First Communions, Baptisms and personal use.

**Sturbridge Pottery**, ([www.sturbridgepottery.com](http://www.sturbridgepottery.com)) A few hundred yards of Route 20, in a quiet residential area, you will find Sturbridge Pottery. Walking through the beautifully landscaped gardens to the entrance of the gallery. Since 1976, Gary and Ann have been weaving their special talents together to create unique and harmonious pottery.

**Sturbridge Antique Shops**, ([www.sturbridgeantiquesshops.com](http://www.sturbridgeantiquesshops.com)) Located on Route 20, Sturbridge Antique Shops features over 75 dealers from around New England and offering a wide range of antique, collectible, and custom merchandise. Whether you're an experienced collector or a weekend shopper, you'll find what you're looking for.

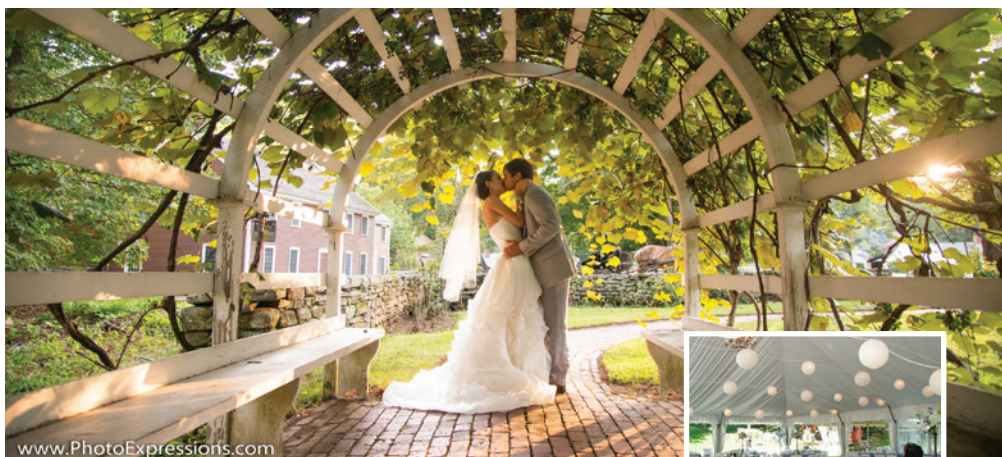
**Sturbridge Travel**, ([www.sturbridgetravel.com](http://www.sturbridgetravel.com)) For more than 45 years, Sturbridge Travel has offered consistent, exceptional, and personalized service in the travel industry for vacations or business travel. They specialize in family vacations, cruises, Caribbean vacations, all-inclusive trips, escorted and independent tours from the best value through luxury packages.

**The Thrifty Gypsy** (774-490-9070) A NEW destination in Sturbridge... features TOP quality CBD products, clothing (new & vintage), jewelry, vegan foods, snacks & drinks, all natural health & beauty products, local all natural honey, old fashioned candy and all natural pet snacks.



**WOODSTOCK, CT**  
**Woodstock Business Association**, ([www.explorewoodstock.com](http://www.explorewoodstock.com)) featuring over 20 retailers including antique emporiums, fine artisan and craft shops, vineyard & brewery, clothing boutiques, real estate agencies, health and wellness operations, orchards, farm stands and more!





## Weddings & Events

South Central Massachusetts is convenient to Springfield, Boston and Providence International airports as well as the Worcester Regional Airport and Southbridge Municipal Airport. The scenic area boasts a number of locations amenable for an unforgettable wedding.

**Old Sturbridge Village, Sturbridge** ([www.osv.org](http://www.osv.org)) Weddings at Old Sturbridge Village offer multiple options for on-site ceremonies including indoor and outdoor locations. The Village features 200-acres of unique photo backdrops, such as the Salem Towne House Garden and a horse-drawn carriage. On-site wedding receptions at Bullard Tavern or Oliver Wight Tavern feature a variety of menu packages and excellent service, with on-site lodging also available for wedding parties. OSV also makes a unique destination for meetings, corporate retreats and private events.



Photo courtesy of The Barn

**The Public House Historic Inn, Sturbridge** ([www.publichouse.com](http://www.publichouse.com)). The ultimate venue for your memorable New England wedding. Built in 1771 and located on the Sturbridge Common.



The area's premier location for historic dining and lodging. 17 guest rooms and suites 18th century ambiance with 21st century comforts.

**The Barn at Wright Farm, Sturbridge** ([www.thebarnatwrightfarm.com](http://www.thebarnatwrightfarm.com)). A picture-perfect choice for a Sturbridge wedding featuring a restored post and beam barn with indoor and outdoor space to accommodate a ceremony and reception for up to 175. Set on nearly four acres in a colonial village setting, the Barn has beautifully landscaped grounds including a patio, fire pit, and a manicured field suitable for tent functions.

**The Sturbridge Host Hotel & Conference Center, Sturbridge** ([www.sturbridgehosthotel.com](http://www.sturbridgehosthotel.com)) offers a variety of indoor and outdoor sites for intimate ceremonies to grand scale wedding receptions. It also has over 35,000 square feet of flexible event space, recently renovated meeting rooms, an exhibition hall, and two ballrooms.

# Accommodations

Enjoy a weekend getaway to South Central Massachusetts. Stay at a Historic Inn or Bed & Breakfast or enjoy the amenities of area hotels. No matter what your taste, there is something here for everyone!



Photo courtesy of Southbridge Hotel & Conference Center

## FEATURED ACCOMMODATIONS



**Comfort Inn & Suites, Sturbridge**  
([www.sturbridgecomfortinn.com](http://www.sturbridgecomfortinn.com)) Two-time award winner! 77 rooms, free wireless, cable TV with HBO, continental breakfast, indoor & outdoor pools, hot tub, fitness room, and cocktail lounge.

**Old Sturbridge Inn and Reeder Family Lodges**  
([www.osv.org/inn](http://www.osv.org/inn)) Enjoy the historic ambiance of the 10-room circa 1789 Oliver Wight House, which is listed on the National Register of Historic Places, as well as the comfort and convenience of 29 modern



Photo courtesy of OSV

lodging units, each with a private entrance. Special getaway packages are available.

**Southbridge Hotel & Conference Center, Southbridge**  
([www.southbridgehotel.com](http://www.southbridgehotel.com)). Features spacious rooms and suites, state-of-the-art meeting rooms, and a stylish lounge, located in the heart of Southbridge.

**The Publick House Historic Inn, Sturbridge**  
([www.publickhouse.com](http://www.publickhouse.com)). Built in 1771 and located on the Sturbridge Common. The area's premier location for historic dining and lodging. 17 guest rooms and suites 18th century ambiance with 21st century comforts.

**The Sturbridge Host Hotel, Sturbridge**  
([www.sturbridgehosthotel.com](http://www.sturbridgehosthotel.com)) Spend a comfortable vacation in the luxurious accommodations of 233-room Sturbridge Host Hotel & Conference Center, a charming hotel offering a prime location in Sturbridge set within minutes from local attractions.



Photo courtesy of The Sturbridge Host Hotel

## OTHER ACCOMMODATIONS INCLUDE:

Sturbridge/Southbridge: Holiday Inn Express, Sturbridge Country Inn  
Hampton Inn, Motel 6, Quality Inn, Scottish Inns, Super 8 Motel





## Best Bib & Tucker

### BIKER CLOTHING & ACCESSORIES

**We sell the finest quality, selection and have the best prices on all of our jackets, chaps, vests, DOT helmets, gloves and rain suits.**

**WE STOCK A HUGE SELECTION OF...**  
saddlebags, tool pouches and travel bags for all motorcycles. Milwaukee, Dan Post and Western boots are also available.

**We are 37 years in the leather business at the same location. We must be doing something right!**

Visit us at Best Bib & Tucker Leather Shop,  
538 Main St. (Rt 20) Sturbridge, MA • 1-800-225-9406. Closed Tuesdays.



- Family owned and operated since 1896
- Over 100 acres with over 8000 fruit trees.
- New & old apple varieties are harvested over a 2 1/2 month season.
- Our many varieties of apples, peaches & pears are favorites of our customers.

*Come to our farm stand...*

and purchase fresh picked apples, peaches, pies



and donuts. We also carry jellies, maple syrup, honey and cheese. Take home some apple cider made fresh from our apples.



1791 Southbridge Rd. • Warren, MA 01083  
413-436-7122 • Open 10am-6pm  
[www.breezelandso orchards.com](http://www.breezelandso orchards.com)



A new destination spot for  
Sturbridge visitors!

## The Thrifty Gypsy

### A quality eclectic market for the frugal family...

We have a huge assortment of  
TOP rated CBD products in store.

*Mention this ad and receive  
\$2 off your purchase of \$20 or more!*

774-490-9070

The Sturbridge Marketplace • 55 Main Street, 2nd Floor



**OPEN YEAR ROUND**

**Friday: 11am-6pm**

**Saturday & Sunday: 11am-5pm**

*Check out summer hours and select  
holiday openings on our website.*



**TAYLOR BROOKE BREWERY  
OPEN SPRING 2019!**

*Located next door to the winery*

848 Rte. 171 • Woodstock, CT  
[www.taylorbrookewinery.com](http://www.taylorbrookewinery.com)



## Breweries & Wineries

Take a tour of the area's local and regional breweries & wineries! Many offer live music and other special events including disc golf, yoga, art & craft workshops and more. Some offer food on-site, check websites for details and hours.

### BREWERIES

**Altruist Brewing Company**  
559 Main Street, Sturbridge  
altruistbrewing.com  
774-241-8022

Owners Bob & Nancy Bixby and lifelong friend Chris Mancini opened their brewery in January 2018, with the goals of "creating amazing craft beer that will continue to bring people together, form bonds, and lifelong friendships." Altruist brews small hand-crafted batches, including IPAs and a variety of ales. The tap room is located in a 150-year-old historic riverside mill building and they offer live music on Saturdays. True to its name, Altruist Brewing Co. is also dedicated to giving back to the local community.



**Homefield Kitchen & Brewery**  
3 Arnold Road, Sturbridge  
homefieldbrewing.biz  
774-242-6365

Homefield Kitchen & Brewery opened in August of 2016 in collaboration with Rapsallion Brewery in Sturbridge. Today, they are known as a "workshop brewery where we never brew the same beer twice."



Homefield sources ingredients from local farms or, as they say, “field to glass... in order to develop a distinct style linked deeply with the landscape and community, revealing the flavors unique to our Homefield terrain.” An onsite kitchen serves locally sourced, freshly prepared food with distinctive flavors.

**Rapscallion Brewery**  
**195 Arnold Road, Sturbridge**  
**drinkrapscallion.com**  
**508-347-7500**



Located on a 150-acre orchard in a historic 1940s apple barn, Rapscallion Brewery offers fresh and small batch beers by flight, pint or pitcher in their tap room, brew house or cellar lounge. Free weekend

tours (Sat/Sun at 2pm), weekly live music, seasonal festivals plus their own disc golf course. Food truck menu available Thurs-Sun, get takeout delivered or bring your own food. Dog-friendly and family-friendly.

**Tree House Brewery**  
**129 Sturbridge Road, Charlton**  
**treehousebrew.com**  
**(413) - 523 - 2367**



A hugely popular artisan brewery, Tree House is “driven by an intense curiosity of ingredients and how they blend together to create something special.” Currently, the taproom is open for draft pours each Saturday, with food truck options and free live entertainment. During the week (Wednesday - Friday), can sales are available and pints will be offered during slower retail times. Follow their Twitter feed for the most up to date information about what’s on tap.

**Kretschmann Brewing Company & Beer Garden**  
**9 Frederick Street, Webster**  
**kcbrewing.com**  
**508-671-7711**

KBC Brewery is a destination brewery that aims to create the highest quality German and American style ales and lagers. They brew many classic styles and seasonal varieties using imported malt and ingredients from local farms. With a style inspired by old

**ALTRUIST**  
**Brewing Company**

**Taproom | Beer Garden Hours:**  
**Thurs & Fri 5 -10pm • Sat Noon - 10pm**  
**Sun Noon-6pm**  
**www.altruistbrewing.com**

**Rapscallion**  
**BREWERY**

**Disc Golf | Food Truck**  
**Tours | Live Music**  
**Tap Room Open Daily!**

**195 Arnold Road, Sturbridge**  
**5 minutes from Rt. 20**



world German beer gardens, KBC's tap-room offers beer by the glass, flight, and growler. They also brew soda syrups to serve fountain style, plus offer locally crafted guest beers, wine, hard

cider, spirits and kombucha. An outdoor beer garden by Webster's French River Park and Riverwalk offers space where patrons can enjoy beer, local musicians, and friendly conversation. Bring your own food or order delivery from a local restaurant.

### Stone Cow Brewery

500 (B) West Street (Rt. 122), Barre Ma

[www.stonecowbrewery.com](http://www.stonecowbrewery.com)

978-257-8600

Stone Cow Brewery is located on the 1,000-acre Carter & Stevens Farm, a fifth-generation dairy farm with a love for craft beer. "The brewery is an effort to sustain the farm for many generations to come. We strive to produce the best milk & beer on Earth!" An on-site Farm Kitchen offers light meals featuring their own produce and bread. They also showcase local musical artists most weekends and offer events and workshops, including yoga, art & craft classes, and kids' programs.



## WINERIES

### Hardwick Winery

3305 Greenwich Road, Hardwick

[hardwickwinery.com](http://hardwickwinery.com)

413-967-7763

Hardwick Winery is located in the 1795 Giles E. Warner Federal-style mansion on 150 acres. The mansion was authentically restored over 5 years by owner/founder John Samek, and today is warmed by fireplace and illuminated by candlelight. The Samek family grows six varieties of French hybrid grapes and produce about 3,500 gallons of wine every year.

The historic property and modern 5,000-square-foot timber frame barn is open for tastings and retail sales year round. They also host weddings and other private events.



### Queen Bee Vineyard

173 Moulton Hill Road, Monson

[queenbeevineyard.com](http://queenbeevineyard.com)

413-267-9329

Founded in 2012, Queen Bee Vineyard is a family owned & operated boutique winery and tasting room offers hand-crafted wine produced on the premises. "We take great pride in producing wines that express the unique qualities of the grape, the growing season, and the hardy New England climate."





Photo courtesy of Sharpe Hill Winery

**Echo Hill Orchards & Winery**  
 101 Wilbraham Road, Monson  
[echohillorchards.com](http://echohillorchards.com)  
 413-267-3303

This family business started as a pick-your-own farm and orchard that diversified into hand-crafted wine made with a variety of fruit grown on-site, including raspberries, pears, peaches, plums and apples. Today, they offer more than a dozen varieties of wines as well as moonshines and ports. They still feature seasonal apple and pumpkin picking, and you can also enjoy scenic tractor rides and browse an eleven-room gift shop.

**Taylor Brooke Winery**  
 848 CT-171, Woodstock, CT  
[taylorbrookewinery.com](http://taylorbrookewinery.com)  
 860-974-1263

Owned and operated by the Auger family, Taylor Brooke Winery features fruit infused wine as well as reds, whites and dessert wines, all of which are available to try and purchase in their tasting room. Guests can also enjoy the winery's communal pavilion, patio and picnic tables overlooking the vineyard. Bring a picnic or purchase local cheeses and snacks in the gift shop.

Guided tours with tasting are offered Thursdays for groups of 8 or more by appointment only. The property is also available to host parties and events.

**Sharpe Hill Vineyard**  
 108 Wade Road, Pomfret, CT  
[sharpehill.com](http://sharpehill.com)  
 860-974-3549

Sharpe Hill is an award-winning winery with over 250 medals in international tastings. The beautifully decorated tasting room and on-site restaurant are open year round. Tasting reservations are required for 8 or more guests. The Fireside Tavern restaurant offers fine dining on Fridays, Saturdays, and Sundays by reservation only. Tables typically fill weeks in advance.



Photo courtesy of Taylor Brooke Winery

# Sturbridge Trails



## There are three parking lots to access trails on the Leadmine Mt. property

- 10 Shattuck Rd.
- 10 OSV Access Rd.
- 197 Leadmine Rd.

## The Leadmine Mt Property

This 880 acre Leadmine Mt. land was purchased in co-operation with the Mass Division of Fisheries and Wildlife which holds the conservation easement and is open for hunting. The trail markings, signs and map are all color coded for ease of use. Trails are in various stages of completion some wetland crossings are not completed. Please use caution, and remember you are in an outdoor environment with various risks. This property is under the care, custody, and control of the Sturbridge Conservation Commission, for questions, comments and trail concerns call the Conservation Agent at 508-347-2506.

## Trail Descriptions

**Leadmine Mt. Trail:** Trail color is orange a 2 mile 8' wide linear trail traveling north / south through the Leadmine Mt. property, linking several trail on this property and the Heins Farm trails, via the Pine lands trail.

**Cow Stile Trail:** Trail color is orange & white, 1.2 mile, single track 3' wide trail off of the Leadmine Mt. Trail traveling by old stone walls used as pasture with unique stone gate structures and hilly route.

**Pinelands Trail:** Trail color is red, a "Y" shaped .7 mile 8' wide trail providing connection from Heins Farm Trails/ 197 Leadmine Rd trail head to the Leadmine Mt. Trail. Named for the White Pine tree stands you travel through.

**The Link Trail:** Trail color is yellow and white, a .3 mile single track trail linking the Leadmine Mt trail and Seven Ridges trails.

**Raven Rookery Trail:** Trail color is green, .6 mile, single track trail traveling in a north/south direction connecting the Mt. Laurel Trail to the Seven Ridges trail. Named after sightings of larger birds of prey nesting in this area.

**Saw Mill Trail:** Trail color yellow w/black dots, is a short 75 yard single track trail off the Seven Ridges Trail to an old saw mill site once owned by the Johnson family in the 1800s.

**Morgan Track Trail:** Trail color grey, a .4 mile, 8' wide trail from 10 OSV Rd. trailhead to the Camp Robinson Crusoe Trail. Named after Mr Philip Morgan an esteemed trustee of OSV, who in 1970 was honored by OSV in this land purchase.

**Arbutus Park:** Trail color blue is a 1.6 mile 8' wide loop trail that starts at the 10 OSV trail head and is Universally Accessible. The east side is relatively level and flat, the west side more hilly but an easy walk, original trail when area known as Arbutus Park in the 1800.





**Old Growth Trail:** Trail color blue w/black dot is a short, 200 yard, 4' wide loop trail off of the Arbutus Park Trail, 200 feet from the 10 OSV trail head. This is an ADA accessible trail, on an island created by Hamant Brook, that has not been logged for over 150 years. The landscape reflects the tornado damage of 2011 and of what an old growth forest was like in 1700.

**Camp Robinson Crusoe Trail:** Trail color purple, is a .2 mile, 8' wide trail starting at the 10 Shattuck Rd. trail head. It is the main road into what was Camp Robinson Crusoe from the 1930 to 1970. It ends at the Arbutus Park Trail

**Gateway Trail:** Trail color purple w/ black dot is a .5 mile single track trail at 10 Shattuck Rd trail head. This trail is designed to provide Mt. bike riders a first ride experience on a more rustic type of trail, thus its "gateway" name

**Seven Ridges Trail:** Trail color yellow is a 1.5 mile, 8' wide trail from the Arbutus Park Trail intersecting with the Raven Rookery, The Link, & Leadmine Mt. Trails, to 365a Leadmine Rd. Named after a similar Camp Robinson Crusoe trail, the most hilly on the property.



## The Hein's Farm

- Trail Head parking at 197 Leadmine Rd.

The Hein's farm was purchased by the Town of Sturbridge in 2006. This 84 acre farm has been preserved and is under the care and Control of the Conservation Commission. This property was acquired for conservation purposes, hunting is prohibited, however it is recommended that from 1 October thru 31 December visitors wear visible orange clothing.

The improvement and conversion of old farm roads on the property began in earnest in the spring of this

year with the relocation of a wetland crossing, marking a trail through the open field area incorporating a section of the Stafford-Worcester turnpike, and trail tread improvements.

**If you observe and want to report a problem, or wish to volunteer and to assist in the care of these trails please contact Conservation Agent Erin Jacque at 508-347-2506 or email: [ejacque@town.sturbridge.ma.us](mailto:ejacque@town.sturbridge.ma.us)**

**Mt. Laurel Trail:** Trail Color is green & white, a .9 mile single track, connecting the Cow Stile Trail to the Raven Rookery Trail. Named for the Mt Laurel in the area.

**There are three trails, all trails loop from the parking lot:**

**The pond view trail** starts in the Northeast corner of the parking lot and travels north crossing Leadmine Rd and returning southerly, to the parking lot. This trail has grades of less than 12% and is designed to meet the Federal ADA guidelines for trail accessibility. The trail features views of the glacial effects on our landscape, glacial erratic boulders, and pond, stream and farm views. The pond view trail is 2/3 mile long

**The old cabin trail and Stafford turnpike/Field trail** start by crossing Leadmine Rd at the driveway and turning slightly south west crossing over the ridge then turning northwest. Follow the trail down across the valley floor and up onto the next ridge, turn right for the cabin trail, left for the field trail both trails return to this point. The Old Cabin trail offers wetland views, an expansive view of the farm and passes by the old family play cabin. This trail is 1/2 long.



**Take: only pictures**

**Leave: only footprints**

**Carry: out all waste, including your pet's**

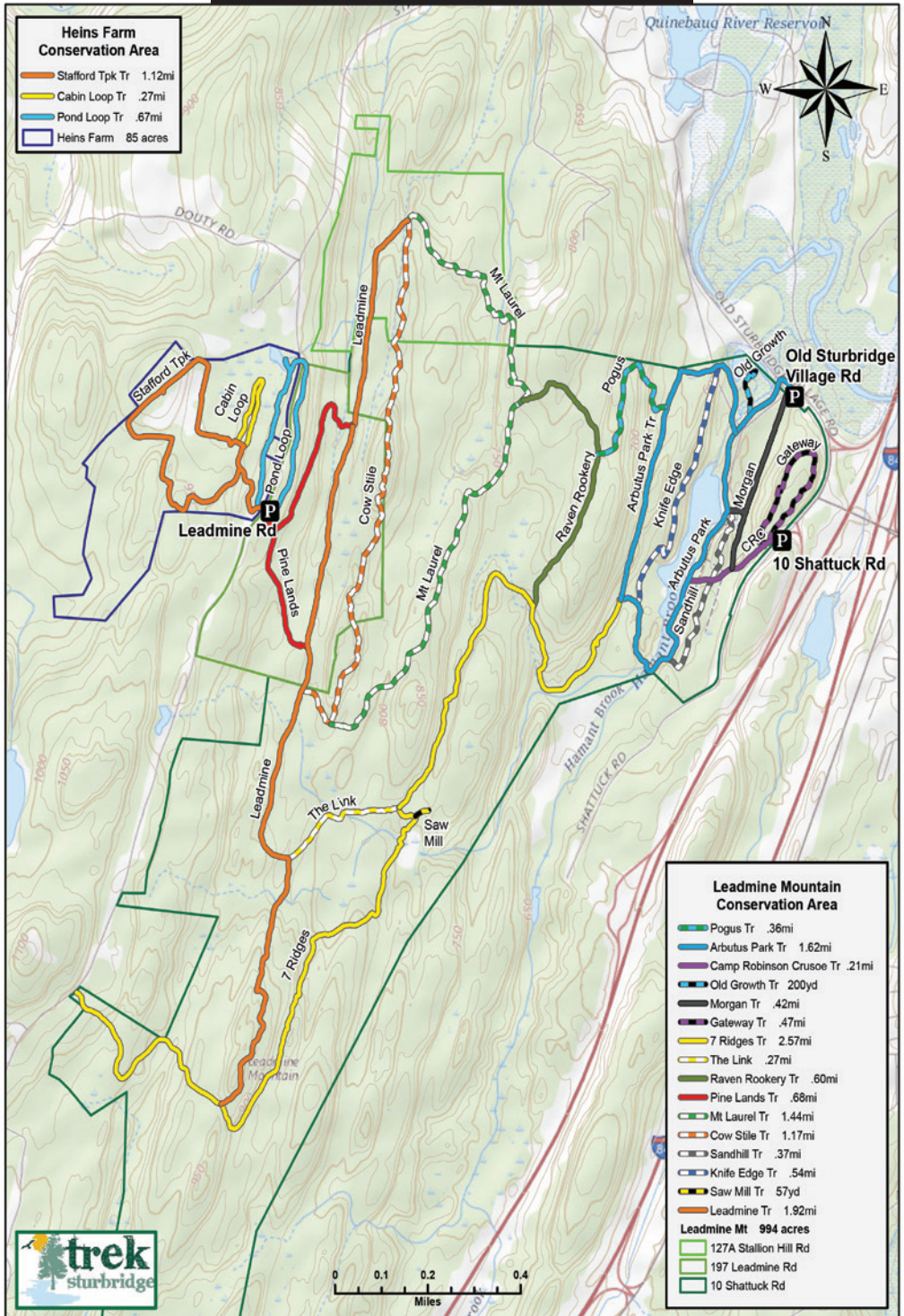
**Watch: the weather**

**Leash: your dogs**

**Enjoy: your visit!**

*Map of trails on following page*

# LEADMINE AND HEIN'S TRAIL MAP





# The Great Outdoors

South Central Massachusetts offers a multitude of activities for nature and outdoors lovers. Camping, hiking, canoeing and kayaking, fishing, bird and nature walks are just a few of the many fun things to do here in the great outdoors.



Access to the area's rich natural resources is so important to Sturbridge that the town has created a **Recreational Trails Master Plan**, to benefit land conservation, the health and well being of residents and to draw visitors to the area. With active support from local officials, the plan will build on and improve currently accessible trails including the Grand Trunk Trail, Heins Farms Trails and Leadmine Mountain Trails. Sturbridge looks to the day when the trail system can be integrated with the commercial hub of town for the benefit of all.

**Buffumville Lake and Park in Charlton** consists of 500 acres of land and 200 acres of water. The park is open daily seasonally and features a 300-foot-long beach with an enclosed swimming, picnic tables and grills, a seven-mile hiking trail, and a popular 27-hole Frisbee golf course. Park Rangers offer special programs on the cultural and natural environment. Other activities include hunting, fishing, boating, picnicking, volleyball and horseshoes. Small groups can rent a 3-acre island by the week for primitive camping.



## **Capen Hill Nature Sanctuary, Charlton**

([www.capenhill.org](http://www.capenhill.org)) is a 72-acre wildlife refuge and non-profit corporation dedicated to nature conservation and education. Open year-round, the Sanctuary features walking trails, visitor's center with

wildlife rehabilitation facilities, live animal exhibits, a nature library, an observation room, gift shop and summer nature camps. Educational programs are tailored to school groups, clubs, scouts and more.



Photo courtesy of Cohasee Country Club

**Cohasee Country Club, Southbridge** ([www.cohasee.com](http://www.cohasee.com)) is a private club located less than 2 miles south from the center of Southbridge. Known for outstanding conditions and greens the course is challenging and rewarding.

**Fay Mountain Farm** is owned by the Town of **Charlton**, preserved as an active farm resource. On-site open space offers passive recreation on a segment of the Midstate Trail that passes through the site. In addition to the 32-acre onsite orchard, the property includes a historical barn, Snow Pond, blueberry and raspberry plantings and over 28 acres of natural wooded and field open space.



Fay Mountain Farm

**The Grand Trunk Trail** is the bed of a railway that was never finished during the early 20th century because one of the owners went down with the Titanic. Today it is also known as the Titanic Rail

has gorgeous surroundings, with mature oak, elm, and hemlock trees lining the fairways. The course was built on hilly terrain, and has water coming into play on two holes. Open to the public.

**Heritage Country Club, Charlton**  
([www.heritagecountryclub.com](http://www.heritagecountryclub.com))

is an 18-hole championship golf course and home of the Central Mass. Professional Open. It “has long been considered one of the finest public golf courses in the

Central Mass area.” With a par 71, 6,468-yard course, Heritage Country Club offers something for players of all abilities plus private club conditions and amenities at affordable rates.



Trail and it runs through both Sturbridge and Southbridge. Various organizations and area communities are working to establish a non-motorized 60-80 mile east-west trail linking the Blackstone River Valley with the Pioneer Valley.

**Heins Conservation Land, Sturbridge** is 84-acre property acquired by the town of Sturbridge in 2006 for its cultural and historic significance. There are three walking trails on the property built and maintained by volunteers.



Photo: Town of Sturbridge

**Hemlock Ridge Golf Course, Fiskdale** ([www.hemlockridgegolfcourse.com](http://www.hemlockridgegolfcourse.com)) This scenic course

**Jellystone Park Camp-Resort, Sturbridge**  
([www.jellystonesturbridge.com](http://www.jellystonesturbridge.com))



Camping and full service resort: rent a cabin, RV or sleep out under the stars. Amenities include

pool, aqua center, hot tub, lake with sandy beach, planned recreation, nightly entertainment in season. Named after the nearby colonial-era graphite mining industry, Leadmine Wildlife Management Area is a 640-acre property in Holland and Sturbridge that abuts the Tantiusques Reservation. Hunting (in season), hiking, and other outdoor recreational pursuits are enjoyed on the property.



Promotional Products • Forms • Stationery  
Labels • Letterhead • Envelopes  
Business Cards • Catalogs • Newsletters  
Brochures • Packaging • Invitations  
Holiday Cards • Presentation Folders  
Postcards • Checks

## The *One Source* for Print and Promotional Business Solutions.

Over 600,000 advertising specialty products available to promote your company, organization or club's name!



**Business Solutions, LLC**



128 Fitzgerald Road, Brooklyn, CT 06234  
Tel: 860.774.6904 • Fax: 860.394.4003  
carmel.osterlund@101bs.com • www.101bs.com

*Proudly serving Northeastern Connecticut and beyond for over 20 years!*

## SAINT ANNE SHRINE & GIFT SHOP

STAFFED BY THE AUGUSTINIANS OF THE ASSUMPTION



*Situated on 35 acres of rolling woodland, the Shrine is a true sanctuary for peace and tranquility.*

Be sure to visit our Gift Shop. We carry an assortment of religious items such as rosaries, jewelry, books, cards, statues, gift items and more.

*Gift Shop is open daily 10am - 5pm*



**SAINT ANNE SHRINE**

16 Church Street • Sturbridge, MA 01518  
508-347-7461 • stannestpatrickparish.org

## Beautiful Antiques...*unusual collectibles.*



ROUTE 20 • STURBRIDGE, MA

Visit the most active group shop in Central New England and browse our extensive selection of quality, affordable antiques.

*Featuring over 80 Dealers  
11,000 Square Feet on two floors*

Porcelain • Silver • Glass • Ephemera  
Furniture • Art • Textiles • Tools • Primitives  
Toys • Metals • Books • Postcards • Sporting  
Clothing • Jewelry & much more!



128 Charlton Rd., (Rt.20) Sturbridge, MA 01566  
508-347-2744 (Next Door to Wal-Mart Plaza)



Open 7 Days 10am-5pm • [www.SturbridgeAntiqueShops.com](http://www.SturbridgeAntiqueShops.com)



**The Midstate Trail** ([www.midstatetrail.org](http://www.midstatetrail.org)) is a 92-mile scenic hiking trail in Worcester County that extends from Rhode Island through central Massachusetts and into New Hampshire. Charlton is home to 8.3 miles of the trail, sections of which pass through Fay Mountain Farm.

**Opacum Land Trust** ([www.opacumlt.org](http://www.opacumlt.org)) owns and manages three properties open to the public for passive recreation. In Southbridge these include the Claire Birtz Wildlife Sanctuary and the Thompson Family Forever Wildlife Preserve. In Sturbridge, it is the Opacum Woods, which includes two geocaching sites. All three preserves have walking trails and are open dawn to dusk.

**Trek Sturbridge: Leadmine Mountain Conservation Lands** Enjoy over 10 miles of well-marked trails on 880 acres of classic New England forests and fields maintained by the Sturbridge Conservation Commission. Three parking lots/trail heads. Color-coded map and signage. **For more information call 508-347-2506.**

**Tantiusques Reservation** in Sturbridge, is a 57-acre property open to the public preserving the site of early New England graphite mining operations. It includes a moderately strenuous 1.5-mile hiking trail. Mountain biking permitted on designated trails. It connects with another 640 acres of Leadmine Wildlife Management Area.

**Wells State Park, Sturbridge**, is a popular 1,400-acre woodland park with 60 campsites. The two principal activities are camping and hiking on more than 10 miles of trails. Walker Pond provides a peaceful setting for fishing, canoeing, and swimming (for campers only). During the summer, Wells provides guided walks, hikes, recreational activities and evening campfire programs.



**Westville Lake Dam Recreation Area, Southbridge & Sturbridge**, is a 578-acre flood control area featuring a 23-acre lake, a three-acre athletic field, picnic shelters, boat launches on both lake and river, and walking trails. Kayaking is very popular here. Other activities include bird and wildlife watching, fishing (the Quinebaug River above the dam is stocked with trout) and in winter ice skating, sledding, and cross-country skiing.





## Orchards and more...

The Sturbridge area boasts farms and agribusiness that produces tasty fruit crops, wine, Christmas trees and is home to herds of cows, sheep, and even the adorable alpaca. Enjoy visiting the farms and orchards below. Others in the area include Brookfield Orchards, Cook's Farm Orchard, and Hollow Brook Farms. Some are open by appointment only.



Hyland Orchard, Sturbridge

Charlton in particular is proud of its productive rural landscapes. Agribusiness is so important to Charlton that in 2002 the town purchased the 65-acre Fay Mountain Farm to preserve an existing apple orchard and historic barn.

**Charlton Orchards Farm & Winery, in Charlton** ([www.charltonorchard.com](http://www.charltonorchard.com)) is a working family farm open June – January (the winery is open year-round with “pick-your-own” farm fresh fruit (apples, pears, peaches, strawberries, blueberries & more), seasonal



Photo courtesy of Charlton Orchards Farm & Winery

produce plus bedding plants grown in their greenhouses, a bakery and a winery.

The Obadiah McIntyre Farm Winery offers tastings and

sales of handcrafted fruit and grape wines. It produces over 20 varieties of wine, (10 international medal winners) plus hard cider. The Farm also offers seasonal events plus rental and group tour availability.

**The Hyland Brewery & Orchard** ([www.hylandorchard.com](http://www.hylandorchard.com)) in Sturbridge is a family-owned and operated 150-acre orchard with pick your

own fruit, wagon/hay rides, petting zoo, live music, kids activities and the Hyland Brewery Tap Room microbrewery.

**Breezeland Orchards, in nearby Warren** ([www.breezelandsorchards.com](http://www.breezelandsorchards.com)), features 100 acres and more than 8,000 fruit trees. Enjoy pick-your-own apples (and tractor rides) during September and October.

The farm stand store is open August until Thanksgiving and offers fruit, baked goods, cider, jam, maple syrup and more.



Raising animals is no less important than fruit. **The Orchid Patch/Andes Alive** in Southbridge has raised llamas, alpacas and Peruvian Hairless dogs since 1975. They also offer educational programs including fiber processing, spinning, fiber craft and bringing the animals of the Andes into the classroom. Other area working farms include Signal Rock Farm (pasture-raised sheep's milk, lamb, hay and wool products) and Hidden Acre Alpaca Farm (raise and breed alpaca) and Westview Farms Creamery (ice cream, petting zoo, garden store, full service restaurant).

## ARTS & ENTERTAINMENT

**Gateway Players Theater Group, Southbridge** ([www.gatewayplayers.org](http://www.gatewayplayers.org)) The Gateway Players provides quality live theatre to the tri-community area of Southbridge, Sturbridge and Charlton Massachusetts and offers a diverse program of community theater and opportunities for participation and training

in the theater arts for all ages. The theater produces about 5 to 8 shows a year, including plays, musicals and more.



Photo courtesy of GPTG

**Stageloft Theater, Sturbridge** ([www.stageloft.com](http://www.stageloft.com)) an intimate community theater producing more than main stage shows a year including musicals, comedies and dramas.



Photo courtesy of The Stageloft Theater

Live music of all kinds can be enjoyed at many locations, including **The Cannery Music Hall, Southbridge** ([www.cannerymusichall.com](http://www.cannerymusichall.com)) a beautiful, acoustically sound room where music and hospitality come first hosting various styles of live music each weekend. Guests can get up close and personal on the large dance floor or take it all in from the mezzanine overlooking the stage and dance floor. Room capacity is 267 standing, 178 with tables and chairs and **The Dark Horse Tavern** featuring pool/darts and big screen TV's.

Live music can also be heard at **The Vanilla Bean Cafe** in Pomfret, CT (an important stop on the New Eng-



land folk music circuit—\$5-\$15 cover) is also worth a visit on weekends for music lovers.



Photo courtesy of The Cannery

**Starlite Bar & Art Gallery, Southbridge** Starlite is a contemporary art gallery, performance space and craft cocktail bar. Established and emerging artists are represented from all disciplines. Find them on Facebook.

**Hyland Orchard & Brewery, Sturbridge** Hyland hosts private and public special events under a large, newly renovated and covered outdoor pavilion area, with full lighting, table and chair rentals, 30-foot long bar, fire pit, and large band stage area. When not renting out the space, Hyland Orchard hosts free outdoor concerts and musical acts on select weekends. Come fall, apple picking among 2,400 trees, tractor rides, animal petting, and outdoor festivals defines farm life. [www.hylandorchard.com](http://www.hylandorchard.com)



Photo courtesy of Roseland Cottage

**The Woodstock Business Association, Woodstock, CT** ([www.explorewoodstock.com](http://www.explorewoodstock.com)) hosts events all year-round including: Artists in the Country Spring collaborative, Free Twilight Concert Series at Roseland Cottage in July and August, The Woodstock Fair (Labor Day weekend) features live music all four days and local arts & craft tents, The Roseland Cottage Arts & Crafts Festival (October weekend after Columbus Day), Artists Open Studio (last weekend in November and first weekend in December) meet the artists in their own studios, and more!





Photo courtesy of OSV

## Historical Attractions

South Central Massachusetts is steeped in American history. While driving through the region, enjoy the sights of beautiful churches, Colonial-era homes, classic town commons and historic mills. The following areas of interest are well worth a visit.



Photo courtesy of CHS

**CHARLTON**  
*The Rider Tavern*  
([www.charlton-historicalsociety.org](http://www.charlton-historicalsociety.org)) Home to the Charlton Historical Society, the Rider Tavern

is open seasonally to the public and available for group tours. Built in 1797 by Eli Wheelock, a local innkeeper and distiller, to serve guests along the road between Worcester and Hartford, the Rider Tavern is “one of the least altered and best documented examples of a wayside tavern of the Federal period in New England.”

### “Grizzly” Adams’ Grave

Formerly the Old Burying Ground, Bay Path Cemetery in Charlton is home to the burial site of John Capen Adams, the legendary 19th-century mountain man and bear-tamer known as Grizzly Adams. After both befriending and killed grizzly bears in the Rockies, he later joined P.T. Barnum, and toured with the circus show.

Photo: Wikipedia



**SOUTHBRIDGE**  
*Notre Dame Church*

A brilliant example of Rococo Architecture, an impressive place of worship or just to enjoy the beauty. Each stone was purchased from the surplus of the Spanish American War for \$1.00

each from the U.S. Government. Secretary of State William Leonard Marcy willed his family’s Estate for the site of new parish.

### STURBRIDGE

*Old Sturbridge Village* ([www.osv.org](http://www.osv.org)) is a ‘must-see’ destination – one of the country’s oldest and largest living history museums, with 40 restored antique buildings, three authentic water-powered mills, two covered bridges, and a working farm with 60 farm animals set among 200 acres of pristine woods and fields. Visitors can participate in a variety of hands-on crafts and activities. Famous for its staff of costumed historic interpreters, OSV recreates life in a working



Old Burial Ground

farm village from 1790 to 1840, and has been a favorite destination for millions of schoolchildren for more than 60 years.

Since 1888, **St. Anne's Shrine** ([www.stannestpat.org](http://www.stannestpat.org)) has welcomed pilgrims praying for physical and spiritual healing. Built in 1883, the church combined with St. Patrick's in 1887. In 1971, an Icon Chapel and Museum opened with a unique collection of Russian icons. The Shrine, Chapel, Museum and gift shop open 10 a.m. - 4 p.m. every day.

Today, careful observers can see the mine cuts, ditches, and tailings piles made by the various mining operations. The mineshaft that tunnels into the face of the low ridge is the most recent of all the excavations, dating to 1902. Most of the mining at Tantiusques was of the open trench variety. The cut along the top of the ridge is the partially filled-in remainder of what was once a several thousand foot-long trench, 20 to 50 feet

in depth and roughly 6 feet in width, which followed the vein of graphite.



**Sturbridge Common**, Sturbridge, which was founded in the 1730's, is a small and picturesque town. At the traffic light at the center of town is the Joshua Hyde Library, the Federated Church and the



Sturbridge Common

### **Tantiusques**

A short loop trail leads through quiet woods; a spur trail passes through the Leadmine Wildlife Management Area and ends at the Robert Crowd Site. Visitors can view the foundations of the house and barn of the African-American and Native American man who worked at the mine in the 1850s.



Tantiusques

town hall. Across from the library is the Old Burial Ground, a resting place for many Revolutionary War veterans.

Diagonally across the street from the cemetery is the Sturbridge common. During the Revolutionary War, it was the scene of great activity, including

The Nipmuc originally mined here for graphite to make ceremonial paints. In 1644, John Winthrop, Jr., son of the first governor of the Massachusetts Bay Colony, purchased the mine with hopes of extracting lead and iron. In the early 19th century, Captain Joseph Dixon and his son worked here before founding the J. D. Crucible Company of New Jersey, famous manufacturers of pencils.

militia drills and the collection of military supplies. At the common, a cavalry company was raised and sent to serve with George Washington's Continental Army. Colonel Ebenezer Crafts, who was the founder and keeper of the Publick House, personally raised and equipped the company. The Publick House, which dates back to 1771, is across Route 131 opposite the common. It was a favorite colonial stopping place along the old Boston Post Road.



An American flag is draped across the top of the page, with the stars and stripes visible. The flag is partially obscured by the title text.

# Calendar of Events

OLD STURBRIDGE VILLAGE offers events throughout the year including: Dog Days, Garden Thyme events, Apple and Ag Days, Historical Craft Classes (for adults), Great Scout Campout, Militia Weekend, Christmas by Candlelight, and so much more!

[www.osv.org](http://www.osv.org)

BRIMFIELD ANTIQUE SHOWS, Brimfield, Massachusetts – Show dates for 2019 are May 14-19, July 9-14 and September 3-8. Largest antique show in New England. [www.brimfieldshow.com](http://www.brimfieldshow.com)

VINTAGE FASHION AND TEXTILES SHOW, Sturbridge Host Hotel, May 13 & September 2, 9:30am – 5pm.  
[www.vintagefashionandtextileshow.com](http://www.vintagefashionandtextileshow.com)

## STURBRIDGE FARMERS MARKET

Sturbridge Town Commons, Sundays 9am - 1pm, June 9 – October 6. [www.town.sturbridge.ma.us](http://www.town.sturbridge.ma.us)

STURBRIDGE CONCERTS ON THE COMMON – June through August, 6-8pm; bring lawn chairs and enjoy!  
[www.cmschamber.ning.com/events](http://www.cmschamber.ning.com/events)

NEW ENGLAND ANTIQUE ARMS, Sturbridge Host Hotel June 14-16. Saturday: 9 -5, Sunday: 9 - 1.  
[www.neaas.org](http://www.neaas.org)

OLD STURBRIDGE VILLAGE – Independence Day Celebration. Come celebrate the best July 4th in history with old-fashioned, patriotic family fun. [www.osv.org](http://www.osv.org)

PINTASTIC NEW ENGLAND (Pinball Convention), June 26 - 30 at the Sturbridge Host Hotel. Fun expo for the whole family. Kids games & activities plus over 200 pinball machines set on free play.  
[www.pintasticnewengland.com](http://www.pintasticnewengland.com)

## OLD STURBRIDGE VILLAGE – Craft Beer & Roots Music Festival, July 20 - 12-8pm

Nearly two dozen craft breweries from across New England will be represented – providing visitors an opportunity to sample and purchase some of the region's top beers, ciders and ales, as well as farm-to-table fare. At five indoor and outdoor stages, more than a dozen musical artists and bands feature roots, bluegrass, country & folk music. [www.osv.org](http://www.osv.org)

THE 30TH ANNUAL HARVEST FESTIVAL, October 19-20 on the Sturbridge Town Common. This family fun tradition includes local crafters, artisans, specialty food vendors and farm fresh harvests plus the Publick House's popular Annual Scarecrow Contest.

THE ORIGINAL WEDDING EXPO, Sturbridge Host Hotel. November 17, 11am-3pm.  
[www.originalweddingexpo.com](http://www.originalweddingexpo.com)

COUNTRY FOLK ART CRAFT SHOW, Sturbridge Host Hotel. November 29-30, Dec. 1, 9am-5pm.  
[www.countryfolkart.com](http://www.countryfolkart.com)



Indoor and Outdoor  
 Wedding Receptions & Ceremonies  
 Family Reunions ~ Holiday Parties  
 Summer Outings  
 Conferences ~ Meetings ~ Trade Shows



232 Lakeside and Poolside Guestrooms  
 Indoor Pool & Beach Swimming  
 Three Restaurants on Property

366 MAIN STREET • STURBRIDGE, MA  
 508-347-7393 • WWW.STURBRIDGEHOSTHOTEL.COM

# THE QUILT AND CABBAGE



- ◆ Quilting Cottons, Batiks, Homespun, Flannels
- ◆ Woolen Fabric & Yarn
- ◆ Quilting Stencils, Books, Patterns, Notions
- ◆ Pennyrug, Punchneedle, Books & Patterns
- ◆ Quilted Items
- ◆ Gift & Specialty Items

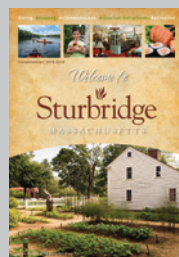
538 Main Street (Rt. 20)  
 P.O. Box 534 • Sturbridge, MA 01566  
 (508) 347-3023

Open Monday, Wednesday thru Saturday 9:30-4:30  
 Sunday 11:00-3:00 • Closed Tuesday

*Call to Confirm Hours*

## Advertise *with us*

in one of these great Eastern Connecticut & area publications!



**FREE AD DESIGN IN ANY PUBLICATION WE PRODUCE**

[www.visitnect.com](http://www.visitnect.com) • [www.putnamtraveler.com](http://www.putnamtraveler.com)  
[www.visitsturbridge.org](http://www.visitsturbridge.org) • [www.connecticuteast.com](http://www.connecticuteast.com)

# GDP

GLOBAL DESIGN & PUBLISHING LLC | *Since 1995*

860.963.0414 | [kelly@gdpublishing.com](mailto:kelly@gdpublishing.com) | [www.gdpublishing.com](http://www.gdpublishing.com)



*In our community for more than 50 years.*



128 Main St. P.O. Box 247  
Sturbridge, MA 01566  
Phone: 508-347-9511  
[www.sturbridgetravel.com](http://www.sturbridgetravel.com)



**Cheryl Wheaton-Reyes, C.T.C., President**  
email: [cwheatonreyes@sturbridgetravel.com](mailto:cwheatonreyes@sturbridgetravel.com)

*Coco's Cottage*  
WOODSTOCK, CT



Unique Clothing & Gifts



253 RT 171, SOUTH WOODSTOCK  
(next to the Woodstock Fairgrounds)  
860-928-1514 • Open W - S, 10-5 and Sun 12-5

## WOODSTOCK BUILDING ASSOCIATES, LLC

The Leader in Design-Build



### RESIDENTIAL DESIGN-BUILD

Franklin, MA - Woodstock, CT

508-570-4853

[wbahomes.com](http://wbahomes.com)



From design to completion, our architects, designers, estimators, project coordinators, superintendents, carpenters, and plumbers work as a team to ensure consistently superior craftsmanship for your project. Design and building costs are tailored to fit your needs without compromising quality. If you are looking for an experienced, organized, professional, and cost conscious design-build company, call Woodstock Building Associates today!

MA Home Improvement Contractor #119085 - MA Construction Supervisor #111269 - CT Home Improvement Contractor #565903 - CT New Home Construction Contractor #160

**REMODELING - NEW CONSTRUCTION - KITCHENS & BATHS - ADDITIONS**

# HD Home Décor

**Handmaiden Décor  
All New!**

*Filled with everything beautiful for your home!*

**Become inspired to transform your home!**

Curtains, Candle Pillars,  
Candles, Table Runners,  
Custom Floral Design,  
House Wares,  
Quality Faux Flowers &  
Farm House Style Decor



*Stop in and see our beautiful collection of curtains  
in our newly remodeled curtain room.*

538 Main Street • Fiskdale (Sturbridge)

508-347-7757

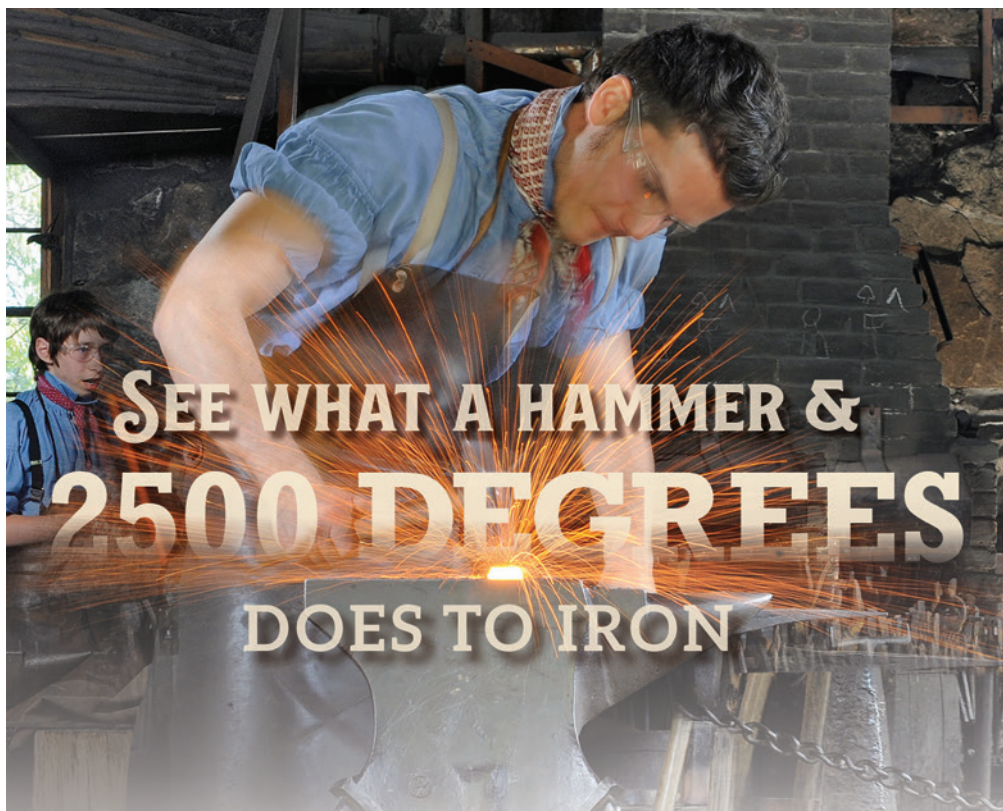


Follow us on Facebook @TheHandmaidenDecor

See Facebook & Website for hours • [www.handmaidendecor.com](http://www.handmaidendecor.com)







# SEE WHAT A HAMMER & 2500 DEGREES DOES TO IRON

Make it an adventure with an overnight stay at our award-winning Old Sturbridge Inn & Reeder Family Lodges, featuring spacious rooms and New England charm. Ask about our special package deals.



**OLD STURBRIDGE VILLAGE**

[WWW.OSV.ORG](http://WWW.OSV.ORG)

## **Old Sturbridge Inn & Reeder Family Lodges**

Call 508-347-5056 or online  
[www.osv.org](http://www.osv.org)

**#1**

**Hotel in  
Sturbridge**  
Trip Advisor

## **Sunday Brunch at Old Sturbridge Village**

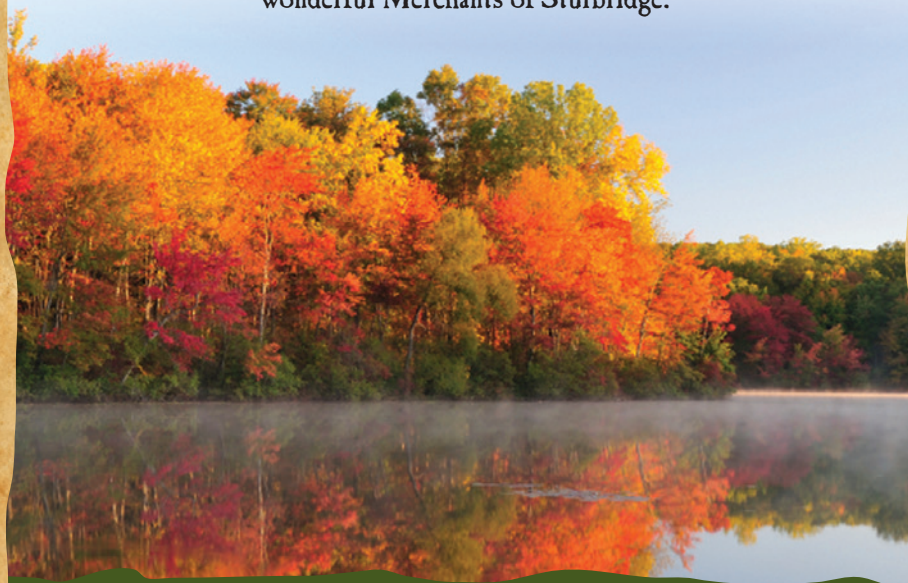
*Extensive buffet in a  
charming setting.  
Reservations recommended  
508-347-0397*



COMMITTEE OF THE TOWN OF STURBRIDGE

## *Shop · Eat · Stay · Play*

Welcome to Sturbridge. Whether you're here for a quick visit, an extended stay, or are one of the lucky folks who happen to live here, we hope you will make the most of our beautiful town and shop, eat, stay and play at the many wonderful Merchants of Sturbridge.



Visit the Sturbridge Tourist Association online to see a calendar of local events in our Town hosted by our local merchants, breweries, restaurants, and hotels such as workshops, walks, talks, book signings, tastings, music and more.

[WWW.VISITSTURBRIDGE.ORG](http://WWW.VISITSTURBRIDGE.ORG)