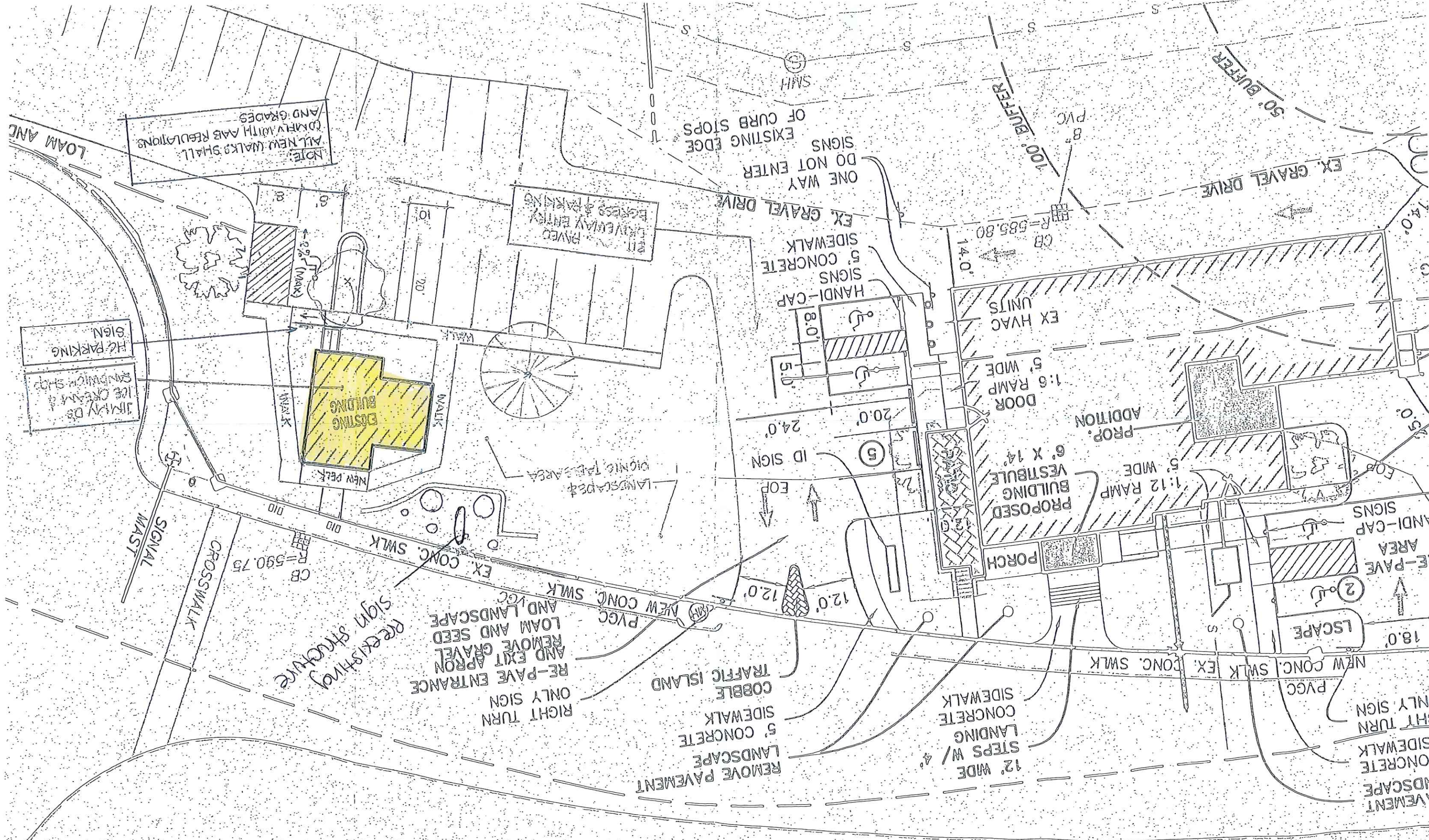


MAIN STREET - ROUTE 20
 1994 HIGHWAY LAYOUT
 L.O. # 7104



NOTE: ALL NEW WALKS SHALL COMPLY WITH ADA REGULATIONS AND GRADES

PAVED DRIVEWAY ENTRY ACCESS & PARKING

ONE WAY DO NOT ENTER SIGNS OF CURB STOPS EX. GRAVEL DRIVE

HANDI-CAP SIGNS 5' CONCRETE SIDEWALK

EX HVAC UNITS 5' WIDE RAMP

PROPOSED BUILDING VESTIBULE 6' X 14' PORCH

PROP. ADDITION 5' WIDE RAMP

HANDI-CAP SIGNS RE-PAVE AREA

SIGNAL MAST

CROSSWALK

EX. CONC. SWLK

NEW CONC. SWLK

REMOVE PAVEMENT LANDSCAPE 5' CONCRETE SIDEWALK COBBLE TRAFFIC ISLAND

12' WIDE STEPS W/ 4" CONCRETE LANDING SIDEWALK

NEW CONC. SWLK EX. CONC. SWLK

REMOVE PAVEMENT LANDSCAPE CONCRETE SIDEWALK RIGHT TURN ONLY SIGN

JIMMY D'S ICE CREAM & SANDWICH SHOP HC PARKING SIGN

EXISTING BUILDING NEW PEAK

LANSCAPED PIONEER PLANT AREA

ESCAPE

ESCAPE