

scope of work

PROPOSED SIGNS	Sq Ft	Elect. Req'd.	Amps / Voltage	Sign Weight	Special Instructions
FRONT ELEVATION					
1	30" Non-Illuminated Channel Letters	44.2	N/A	N/A	66 lbs
4&5	Temp Banners	N/A	N/A	N/A	-
					When Required, INSTALLER to provide any cords necessary to install banners. LL to provide Hilti eyebolts for banner installation.
		Allowed SF 76.5	Total SF 44.2		
FREESTANDING SIGNS					
2	Tenant Face	9.3	N/A	N/A	-

drawing approval

Reviewed By: _____ Date: _____

Approved Approved As Noted Not Approved, Revise As Noted

revisions

REV#	DATE	REVISION NOTES:	BY	SHEET#
1	6.13.22	Update elevation renderings.	KG	2,3,7
2	7.05.22	Update allowed SF. Update S1 to fit allowed SF. Update S1 to non-illuminated letters. Remove UC sign and construction sign.	KG	ALL
3	7.08.22	Update size of blue background.	KG	various
4	7.14.22	Add dimensions back to blue background.	KG	2
5	7.21.22	Update size of blue background to 17'-9" x 6'-9". Update S1 to fit.	KG	various
6	7.21.22	Add second option for front elevation.	KG	various
7	7.22.22	Add third option for front elevation.	KG	various
8	7.26.22	Update S1 to 30" channel letters. Remove white frame	KG	various

symbols key

	120 Volt Junction Box
	Elect Whip: 1/2"Ø x 6'-0" Lg Greenfield
	LED Power Supply
	Blocking Req'd
	Additional Structure Req'd.
	Special Condition Applies
	Access Panel - Field Cut
	Additional Information Req'd.
	Remove
	Remain As-Is
	Relocate

partial elevation

Photo Renderings Are Estimated & May Not Be Accurate. All Proportions, Dimensions And Mounting Details Must Be Verified Via Technical Survey And/Or Architectural Drawings.

SUBTRACT LETTER HEIGHT FROM AVAILABLE AREA



SIGN PLACEMENT

30" Channel Letters (44.2 sq. ft.)

1



Proposed Rendering

FIVE BELOW NOTES

Facade:

- FB to reface parapet to Five Below finishes.
- FB to engineer new storefront glass, 10'-6" high, 4'-0" min panel width, no upper mullions.
- FB to locate 8' tall storefront doors per tenant's final plans.
- FB to install walkway lighting, 6'-0" min O.C., with additional door light.
- FB to refurbish existing gooseneck lights to like-new conditions.
- FB to install HILTI eyebolts in facade for temporary banners, see A40 for loc.
- FB to provide curb cut within 30' of storefront entry.
- FB to provide unobstructed permanent access to sign mountable/electrical connection area.
- FB to provide electrical to center of all applicable sign mountable areas.

Signage:

- Primary Sign: 30" non-illuminated channel letters (letters to be externally illuminated w/ existing, refurbished gooseneck lights.)
- Pylon Panel: Panel below petco

Finishes by FB:

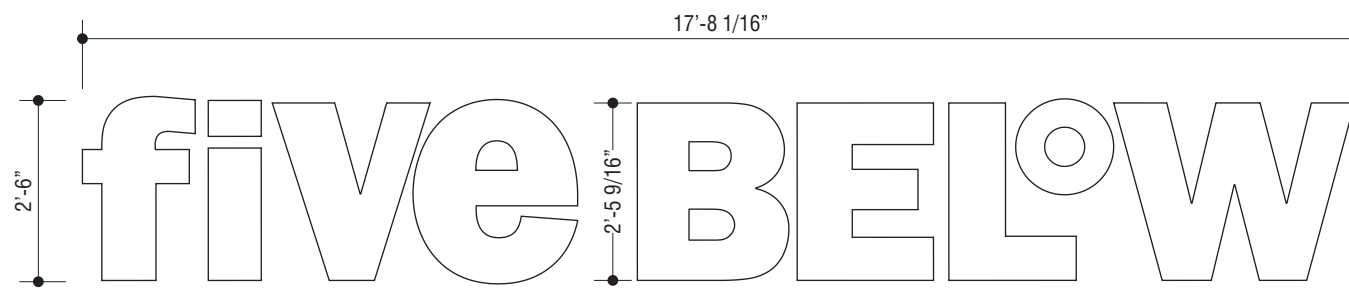
- Facade: 3" Dryvit 456 Oyster Shell
- Signage EIFS: 1" Dryvit FIBE-101021S (to match PMS 285 C)
- Cornice EIFS: 1" 310 China White
- Pilasters: 2" Dryvit 113 Amarillo White

full elevation

Photo Renderings Are Estimated & May Not Be Accurate. All Proportions, Dimensions And Mounting Details Must Be Verified Via Technical Survey And/Or Architectural Drawings.



Proposed Rendering



1 1 30" Channel Letters - Custom Non-Illuminated Channel Letters 44.2 sf
 Scale: 3/8" = 1' 0"
 (1 Required)

2 Side View
 Scale: 3/8" = 1' 0"

specifications

Exterior Fabricated Non-Illuminated Channel Letters Mounted To EFIS Wall System, Externally Illuminated By Existing, Refurbished Gooseneck Lights.

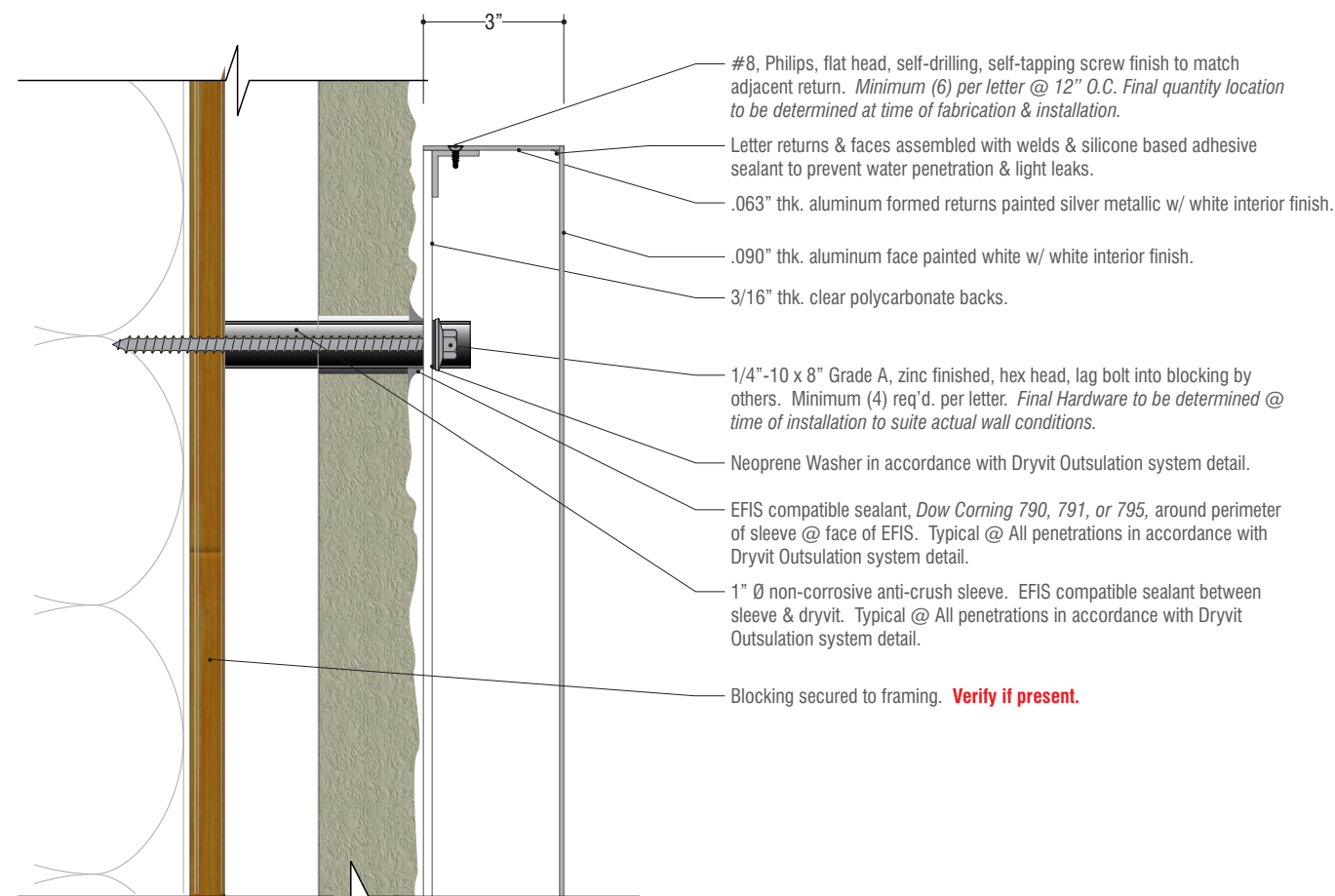
EST WEIGHT: 66 lbs

ULTIMATE WIND SPEED: 131 MPH
 NOMINAL WIND SPEED: 117 MPH
 RISK CATEGORY: II (3 Sec Peak Gust MPH)
 WIND IMPORTANCE FACTOR: I= 1
 WIND EXPOSURE: C

WIND-BORNE DEBRIS REGION

BUILDING & FASCIA CONDITIONS

1. WALL SURFACE: Eifs Over Plywood On Metal Studs.



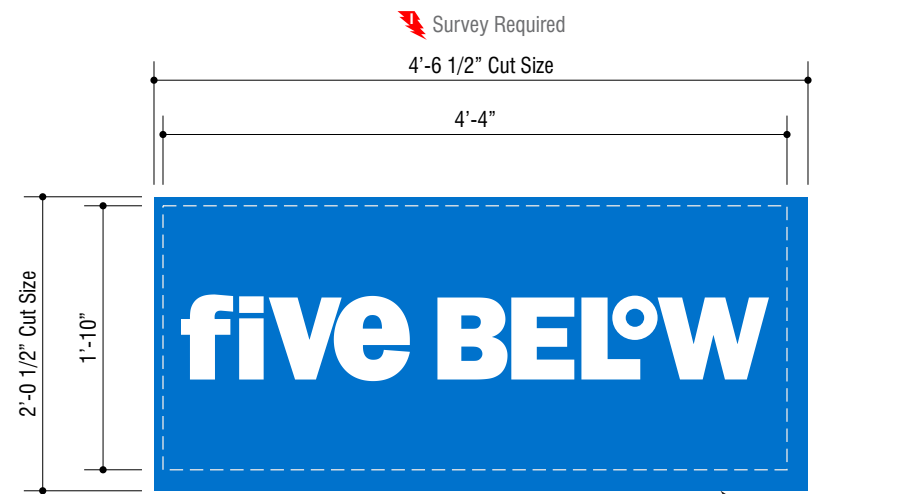
3 EIFS Attachment Detail
 SCALE: 3" = 1'

sign 2

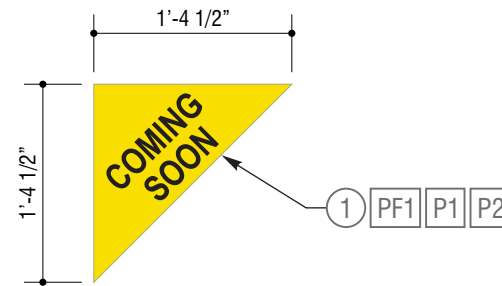
2 Reface (9.3 sq. ft.)



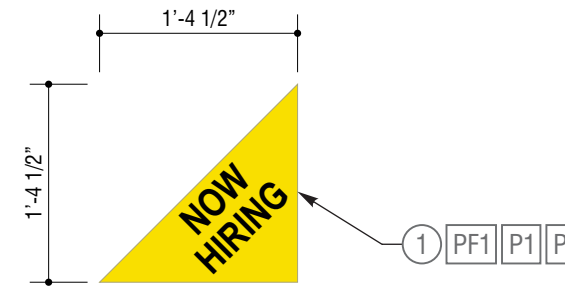
Proposed Rendering



2 | 1 Tenant Reface
5 Scale: 3/4" = 1'-0" (2 Required) 9.3 sf



2.a | 2 C.S. Temp Graphic - FB-CLING-CMSN
5 Scale: 3/4" = 1'-0" (2 Required)



2.b | 3 N.H. Temp Graphic - FB-CLING-HIRE
5 Scale: 3/4" = 1'-0" (2 Required)



reface specifications

Replacement Faces For Tenant Cabinet

COLORS & FINISHES

PF1. FACE: White
V1. VINYL: 1st Surface 3M 3630-167 Bright Blue

REFACE CONSTRUCTION

1. FACE: 177" Thk White Polycarbonate w/1st Surface Vinyl

temp graphic specifications

COLORS & FINISHES

PF1. FILM: Matte White
P1. PRINT: Black
P2. PRINT: Pantone Yellow C

TEMP GRAPHIC CONSTRUCTION

1. CHANGEABLE FILM: Briteline IM3202 Matte White Low Tack Temporary Removable Vinyl

INSTALLATION INSTRUCTIONS

1. Apply To Upper Left Corner Of Face - 2" From Edge Of Face In Each Direction
2. Apply To Face Before Shipping



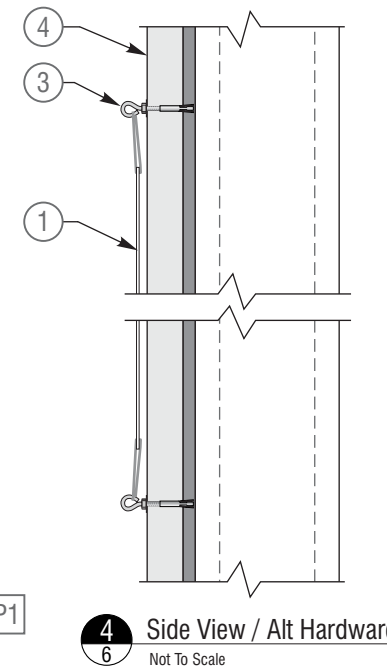
3 **1** Coming Soon Banner - FB-BNR315-CS
 Scale: 3/8" = 1'-0"
 (1 Required)



4.a **2** Grand Opening Banner - Side A - FB-BNR420-DF-GONO
 Scale: 3/8" = 1'-0"
 (1 Required)



4.b **3** Now Open - Side B of Grand Opening Banner - FB-BNR420-DF-GONO
 Scale: 3/8" = 1'-0"
 (1 Required)



COLORS & FINISHES

- PF1. BANNER: Matte White
- P1. PRINT: To Match PMS 285 C

BANNER CONSTRUCTION

- BANNER: 15oz Briteline Hemmed & Grommeted
- FONT: "Season Year" & "Month, Day, Year" Franklin Gothic Heavy

INSTALLATION HARDWARE PROVIDED BY INSTALLER

- TYPICAL HARDWARE: HILTI Eyebolts, Provided By Installer
- ALTERNATIVE HARDWARE: Cord, Provided By Installer, From Grommets To Fasteners, Provided By Installer

BUILDING & FASCIA CONDITIONS

- WALL SURFACE: Varies / TBD

BANNER INSTALLATION NOTES:

- Attach Banner to HILTI Eyebolts, Provided By Installer, Maximum 2'-0" On Center
- When Required, Cord, Provided By Installer, From Grommets To Fasteners, Provided By Installer, On Fascia Or Rig With Sandbags Of Roof, Etc, Provided By Installer
- LL To Provide Special Duration, Size Or Restrictions At Time Of Sign Package Review - Per LL Notes.
- "Coming Soon" Banner To Be Installed Approximately One Month Prior To Installation Of Wall Signs. Banner Will Be Flipped Over Day Before The Opening To Read "Now Open" And Will Remain Up An Additional 30 Days.
- Patch And Repair Fascia Upon Removal Of Banners
- Seal All Penetrations. (For Eifs, Use Eifs compatible sealant, Dow Corning 790, 791, or 795 At All Penetrations)



5 Storefront Elevation - Grand Opening Banner
 Not To Scale