

STARBUCKS COFFEE #77837
212-226 CHARLTON RD.
STURBRIDGE, MA 01566



23-65864

HILTONDISPLAYS

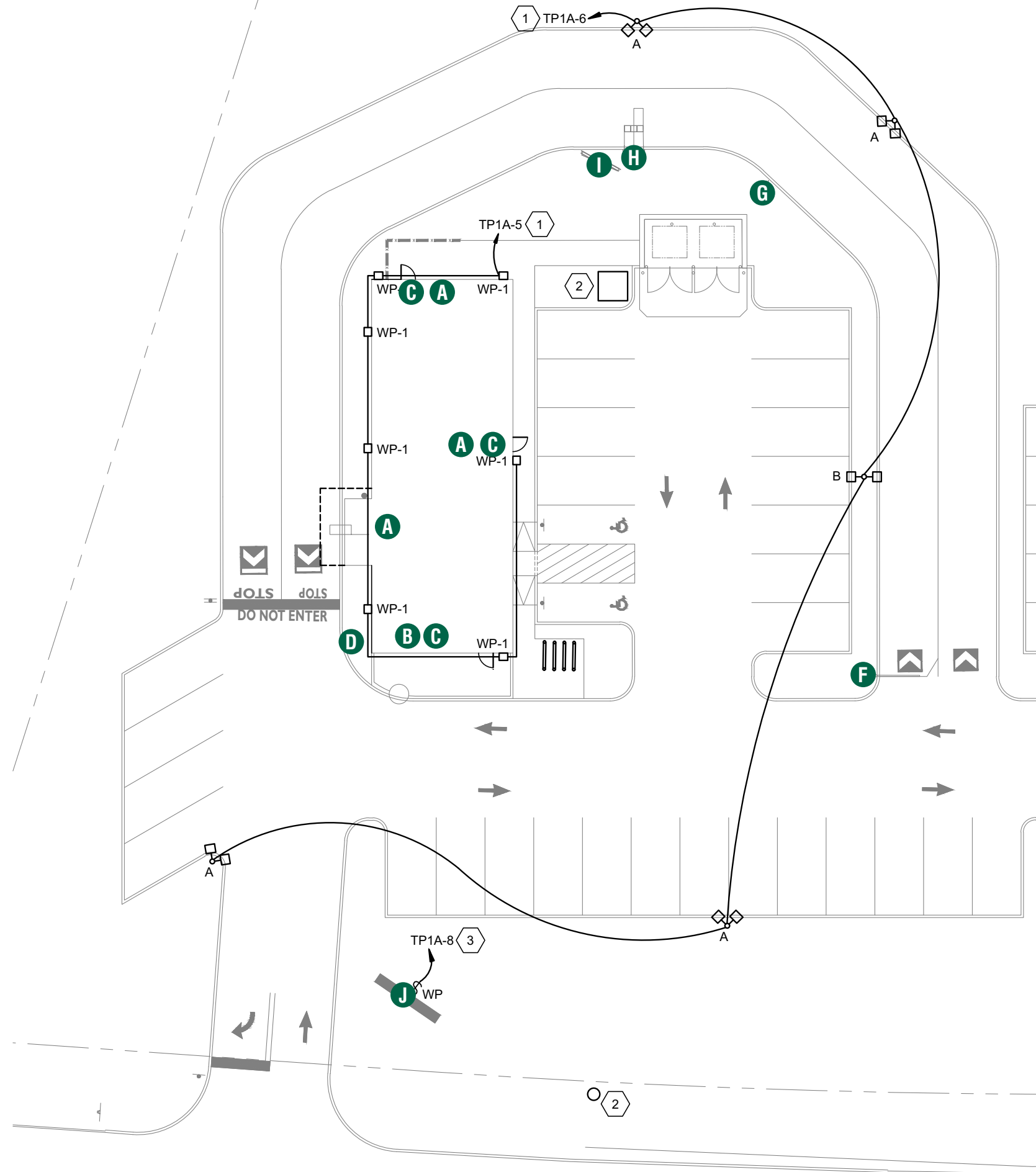
125 HILLSIDE DRIVE • GREENVILLE SC 29607

P 800 353 9132 • F 864 242 2204

www.hiltondisplays.com

SITE PLAN

- A** 60" SIREN
- B** 20" CHANNEL LETTERS
- C** DT CABINET
- D** DIRECTIONAL TY/EO
- E** DIRECTIONAL DT
- F** CLEARANCE BAR
- G** PRE-MENU BOARD
- H** DOS/CANOPY
- I** MENU BOARD
- J** PYLON PANEL



QID 23-65864

JOB NAME

Starbucks 77837

LOCATION

212-226 Charlton Rd.
 Sturbridge, MA 01566

CUSTOMER CONTACT

SALESMAN / PM

Joe Nolasco

DESIGNER

Brady Taylor

DWG. DATE

xx-xx-23

REV. DATE / REVISION

SCALE

As Noted

FILE

2023/Starbucks/Locations/
 Sturbridge MA/23-65864/
 SB Sturbridge MA 23-65864

DESIGN SPECIFICATIONS ACCEPTED BY:

EST: CLIENT:

SLS/PM: LANDLORD:

THE INTENT OF THIS DRAWING IS TO SHOW A CONCEPTUAL REPRESENTATION OF THE PROPOSED SIGNAGE. DUE TO VARIATIONS IN PRINTING DEVICES AND SUBSTRATES, THE FINISHED PRODUCT MAY DIFFER SLIGHTLY FROM DRAWING.



ELEVATION

- A** 60" SIREN
- B** 20" CHANNEL LETTERS
- C** DT CABINET
- D** DIRECTIONAL TY/EO
- E** DIRECTIONAL DT
- F** CLEARANCE BAR
- G** PRE-MENU BOARD
- H** DOS/CANOPY
- I** MENU BOARD
- J** PYLON PANEL

QID 23-65864

JOB NAME

Starbucks 77837

LOCATION

212-226 Charlton Rd.
 Sturbridge, MA 01566

CUSTOMER CONTACT

SALESMAN / PM

Joe Nolasco

DESIGNER

Brady Taylor

DWG. DATE

xx-xx-23

REV. DATE / REVISION

SCALE

As Noted

FILE

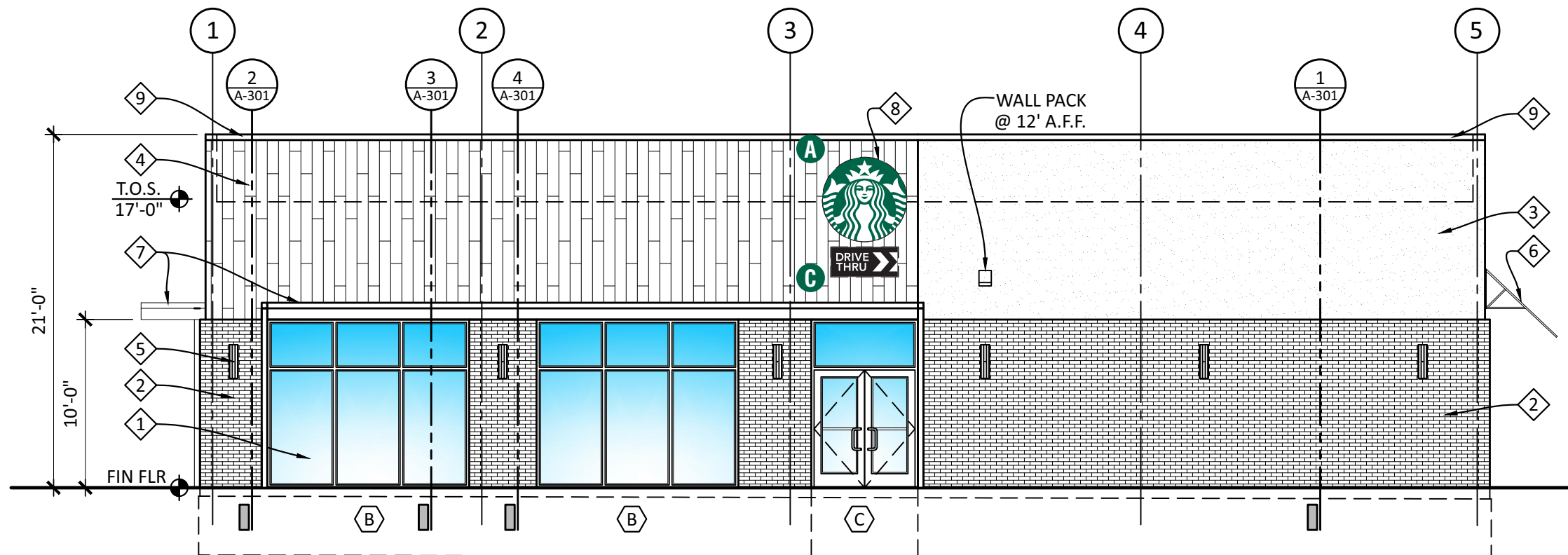
2023/Starbucks/Locations/
 Sturbridge MA/23-65864/
 SB Sturbridge MA 23-65864

DESIGN SPECIFICATIONS ACCEPTED BY:

EST: CLIENT:

SLS/PM: LANDLORD:

THE INTENT OF THIS DRAWING IS TO SHOW A CONCEPTUAL REPRESENTATION OF THE PROPOSED SIGNAGE. DUE TO VARIATIONS IN PRINTING DEVICES AND SUBSTRATES, THE FINISHED PRODUCT MAY DIFFER SLIGHTLY FROM DRAWING.



EAST ELEVATION

SCALE: 1/8" = 1'-0"

ELEVATION

- A** 60" SIREN
- B** 20" CHANNEL LETTERS
- C** DT CABINET
- D** DIRECTIONAL TY/EO
- E** DIRECTIONAL DT
- F** CLEARANCE BAR
- G** PRE-MENU BOARD
- H** DOS/CANOPY
- I** MENU BOARD
- J** PYLON PANEL

QID 23-65864

JOB NAME

Starbucks 77837

LOCATION

212-226 Charlton Rd.
 Sturbridge, MA 01566

CUSTOMER CONTACT

SALESMAN / PM

Joe Nolasco

DESIGNER

Brady Taylor

DWG. DATE

xx-xx-23

REV. DATE / REVISION

SCALE

As Noted

FILE

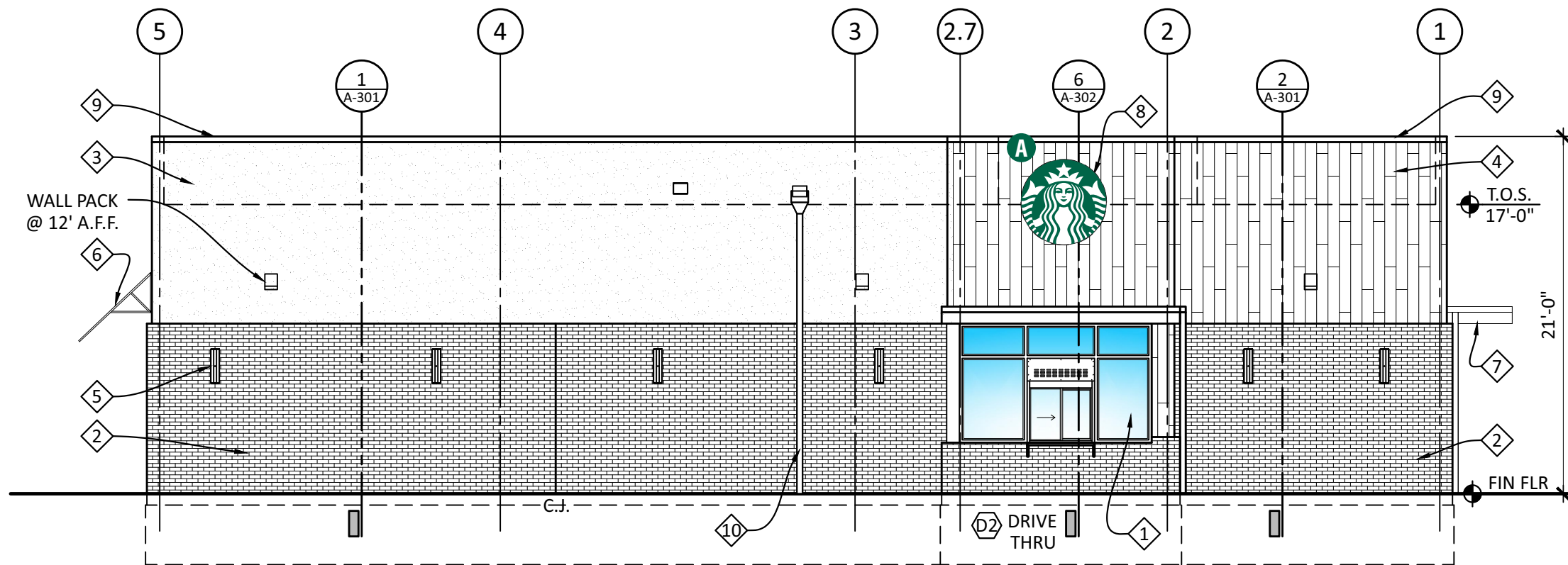
2023/Starbucks/Locations/
 Sturbridge MA/23-65864/
 SB Sturbridge MA 23-65864

DESIGN SPECIFICATIONS ACCEPTED BY:

EST: CLIENT:

SLS/PM: LANDLORD:

THE INTENT OF THIS DRAWING IS TO SHOW A CONCEPTUAL REPRESENTATION OF THE PROPOSED SIGNAGE. DUE TO VARIATIONS IN PRINTING DEVICES AND SUBSTRATES, THE FINISHED PRODUCT MAY DIFFER SLIGHTLY FROM DRAWING.



WEST ELEVATION

SCALE: 1/8" = 1'-0"

ELEVATION

- A** 60" SIREN
- B** 20" CHANNEL LETTERS
- C** DT CABINET
- D** DIRECTIONAL TY/EO
- E** DIRECTIONAL DT
- F** CLEARANCE BAR
- G** PRE-MENU BOARD
- H** DOS/CANOPY
- I** MENU BOARD
- J** PYLON PANEL

QID 23-65864

JOB NAME

Starbucks 77837

LOCATION

212-226 Charlton Rd.
 Sturbridge, MA 01566

CUSTOMER CONTACT

SALESMAN / PM

Joe Nolasco

DESIGNER

Brady Taylor

DWG. DATE

xx-xx-23

REV. DATE / REVISION

SCALE

As Noted

FILE

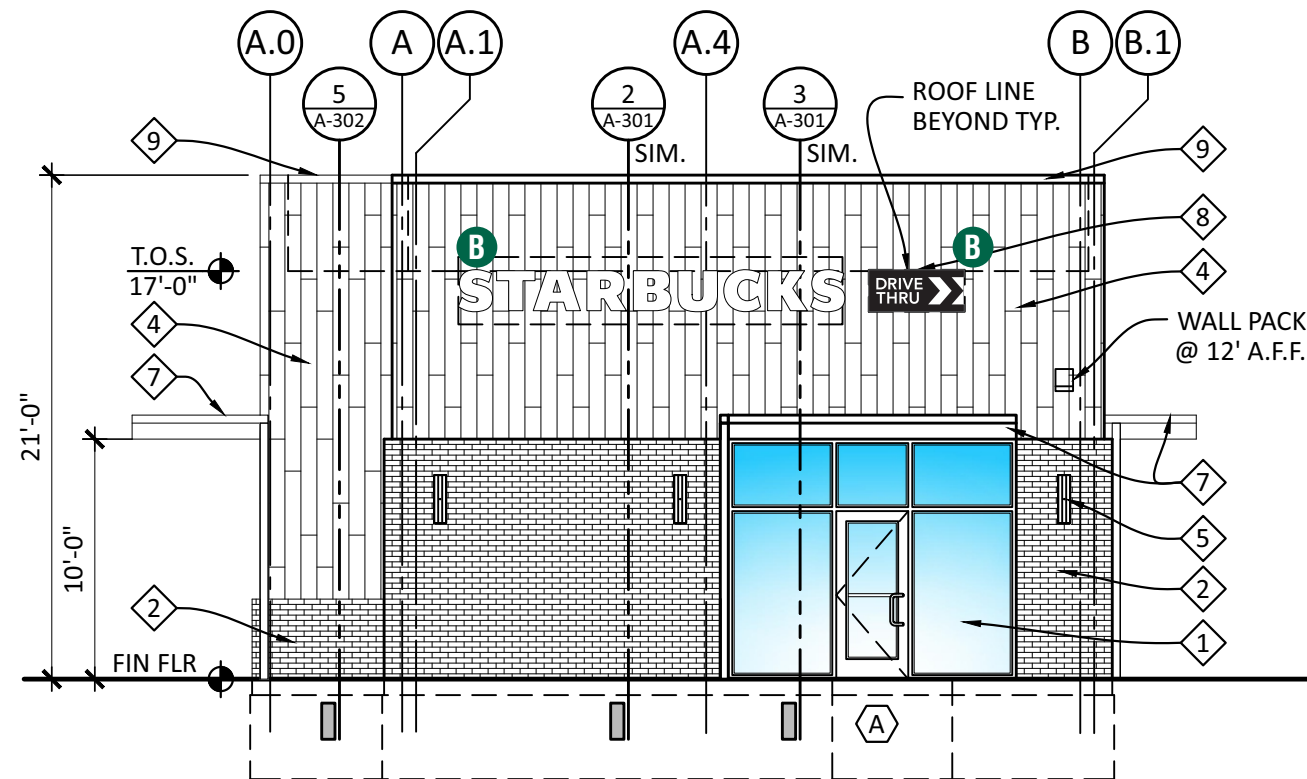
2023/Starbucks/Locations/
 Sturbridge MA/23-65864/
 SB Sturbridge MA 23-65864

DESIGN SPECIFICATIONS ACCEPTED BY:

EST: CLIENT:

SLS/PM: LANDLORD:

THE INTENT OF THIS DRAWING IS TO SHOW A CONCEPTUAL REPRESENTATION OF THE PROPOSED SIGNAGE. DUE TO VARIATIONS IN PRINTING DEVICES AND SUBSTRATES, THE FINISHED PRODUCT MAY DIFFER SLIGHTLY FROM DRAWING.



SOUTH ELEVATION

SCALE: 1/8" = 1'-0"

ELEVATION

- A** 60" SIREN
- B** 20" CHANNEL LETTERS
- C** DT CABINET
- D** DIRECTIONAL TY/EO
- E** DIRECTIONAL DT
- F** CLEARANCE BAR
- G** PRE-MENU BOARD
- H** DOS/CANOPY
- I** MENU BOARD
- J** PYLON PANEL

QID 23-65864

JOB NAME

Starbucks 77837

LOCATION

212-226 Charlton Rd.
 Sturbridge, MA 01566

CUSTOMER CONTACT

SALESMAN / PM

Joe Nolasco

DESIGNER

Brady Taylor

DWG. DATE

xx-xx-23

REV. DATE / REVISION

SCALE

As Noted

FILE

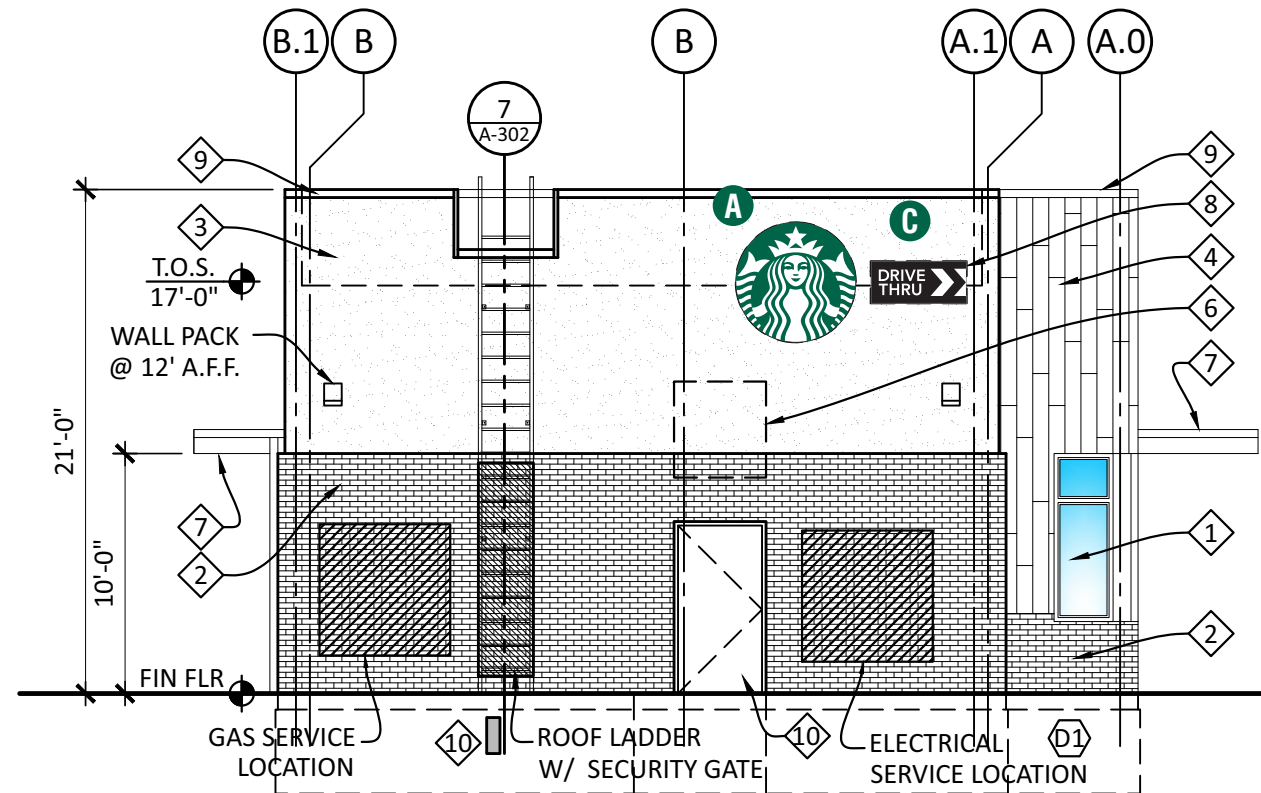
2023/Starbucks/Locations/
 Sturbridge MA/23-65864/
 SB Sturbridge MA 23-65864

DESIGN SPECIFICATIONS ACCEPTED BY:

EST: CLIENT:

SLS/PM: LANDLORD:

THE INTENT OF THIS DRAWING IS TO SHOW A CONCEPTUAL REPRESENTATION OF THE PROPOSED SIGNAGE. DUE TO VARIATIONS IN PRINTING DEVICES AND SUBSTRATES, THE FINISHED PRODUCT MAY DIFFER SLIGHTLY FROM DRAWING.



NORTH ELEVATION

SCALE: 1/8" = 1'-0"

S/F EXTERIOR TRIMLESS FLEX FACE SIREN WALL SIGN

Qty. 3

SBC-S13164-60-FF

A

HILTONDISPLAYS

125 HILLSIDE DRIVE • GREENVILLE SC 29607
P 800 353 9132 • F 864 242 2204
www.hiltondisplays.com

QID 23-65864

JOB NAME

Starbucks 77837

LOCATION

212-226 Charlton Rd.
Sturbridge, MA 01566

CUSTOMER CONTACT

SALESMAN / PM

Joe Nolasco

DESIGNER

Brady Taylor

DWG. DATE

xx-xx-23

REV. DATE / REVISION

SCALE

As Noted

FILE

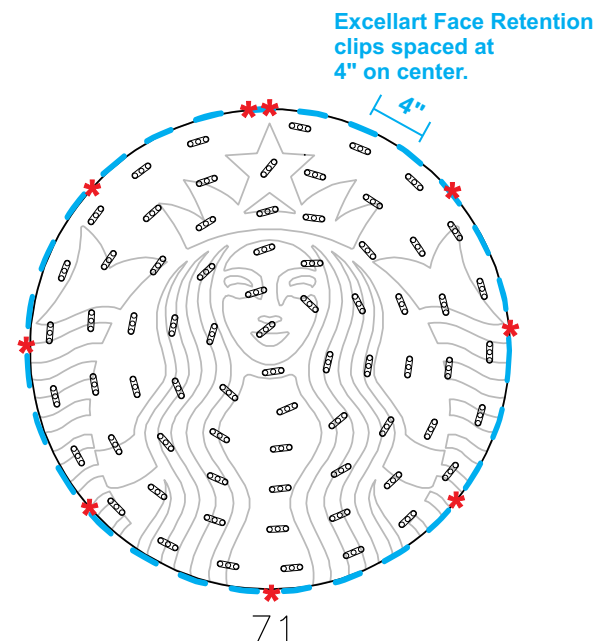
2023/Starbucks/Locations/
Sturbridge MA/23-65864/
SB Sturbridge MA 23-65864

DESIGN SPECIFICATIONS ACCEPTED BY:

EST: CLIENT:

SLS/PM: LANDLORD:

THE INTENT OF THIS DRAWING IS TO SHOW A CONCEPTUAL REPRESENTATION OF THE PROPOSED SIGNAGE. DUE TO VARIATIONS IN PRINTING DEVICES AND SUBSTRATES, THE FINISHED PRODUCT MAY DIFFER SLIGHTLY FROM DRAWING.



* #6 PAN HEAD SCREWS

- 1) ACTUAL CHANNEL LETTER POPULATION AND PRODUCT PLACEMENT MAY VARY FROM THIS LAYOUT
- 2) PRISM ENLIGHTEN WHITE 6500K LAID OUT AT 1.5 MODULES PER FOOT, 5.0" ON CENTER
- 3) EACH 60W3 POWER SUPPLY CAN RUN UP TO 72 PRISM ENLIGHTEN WHITE 6500K MODULES
- 4) LAYOUT BASED ON A 2.5" CAN DEPTH
- 5) DIMENSIONS ARE IN INCHES UNLESS STATED OTHERWISE
- 6) 701269-6WEJ1-MB WATTS PER MODULE: .75
- 7) PRIMARY SYSTEM POWER: 66.56 WATTS
- 8) LED MODULE POWER USAGE (secondary): 53.25 WATTS

ESTIMATED PRODUCT B.O.M. PER SIGN:

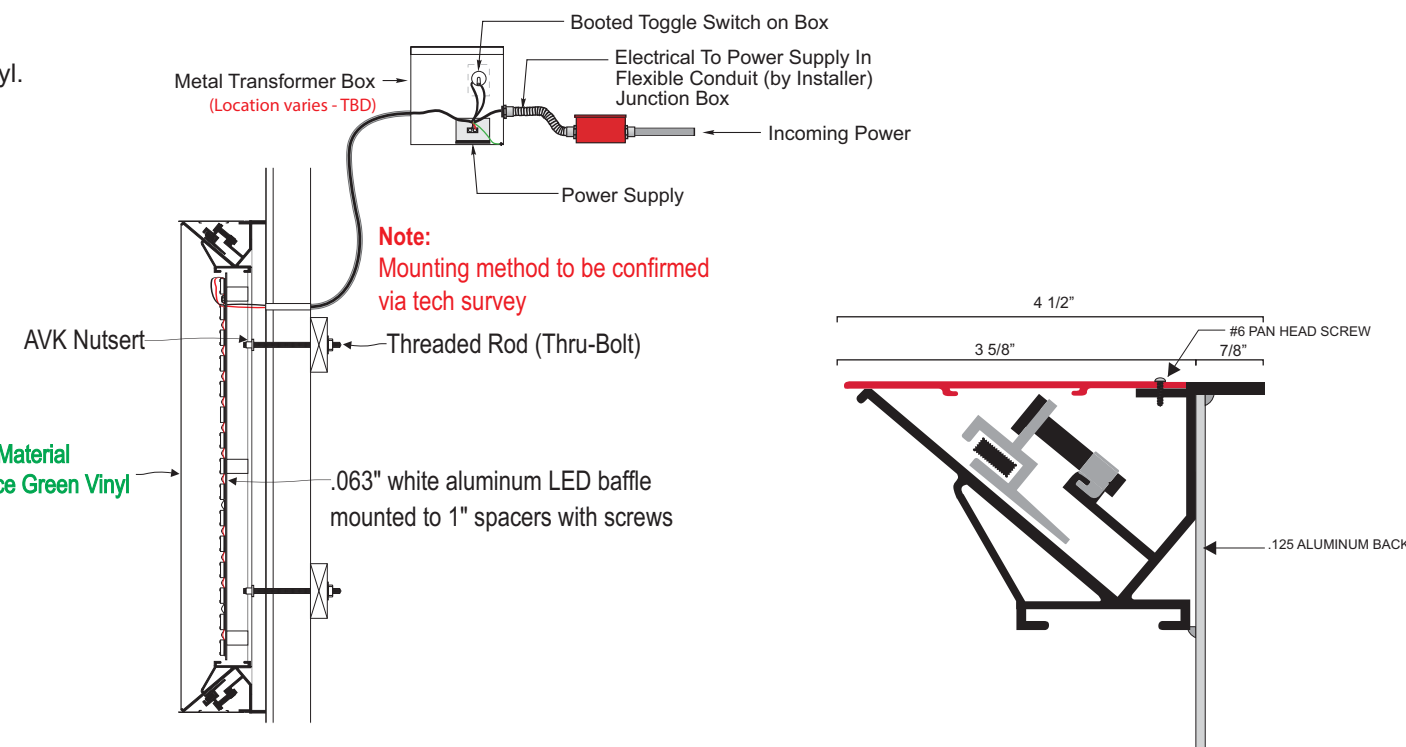
- 71 Each Prism Enlighten White 6500K Modules - 48'
- PN: 701269-6WEJ1-MB
- 1 Each 60C2 (Damp/Dry locations) or 60W3 (Wet location) 60W Power Supply 12VDC
- 1 Each 100' Roll of Jacketed Cable

1 FRONT VIEW

Scale: 1/2" = 1' (11x17 Paper)

Specifications:

- A Single face internally illuminated Excellart EC-Flex Standard flex face cabinet with bleed trim cover.
- B White 3M 19 oz Panagraphics III Flex Faces with 3M 3630-126 Dark Emerald Green vinyl. Face retention clips spaced every 4".
- C Interior of cabinet painted reflective white and exterior painted satin black.
- D Internally illuminated with 6500K Sloan Prism Enlighten LEDs with remote power supply.
- E 1/4" drain holes located at the bottom of cabinet as required by UL 48 for Electric Signs.
- F Drain holes to be covered with drain hole covers to reduce light leaks.



Siren Detail

Excellart EC-Flex Standard with Bleed Trim Cover

COLOR LEGEND

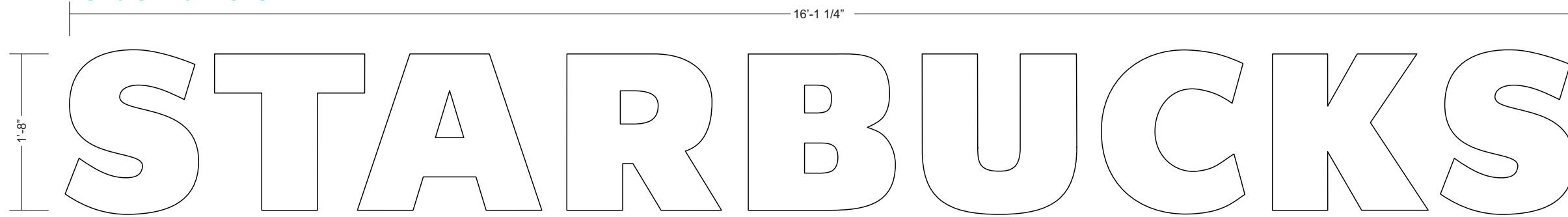
| | PMS/PAINT | VINYL |
|--|-------------|-------------|
| | PMS 3425 C | 3M 3630-126 |
| | SATIN BLACK | NA |
| | PMS WHITE | NA |

TRIMLESS CHANNEL LETTERS - REMOTE

Qty. 1

B

SBC-SB-20-W-SDS

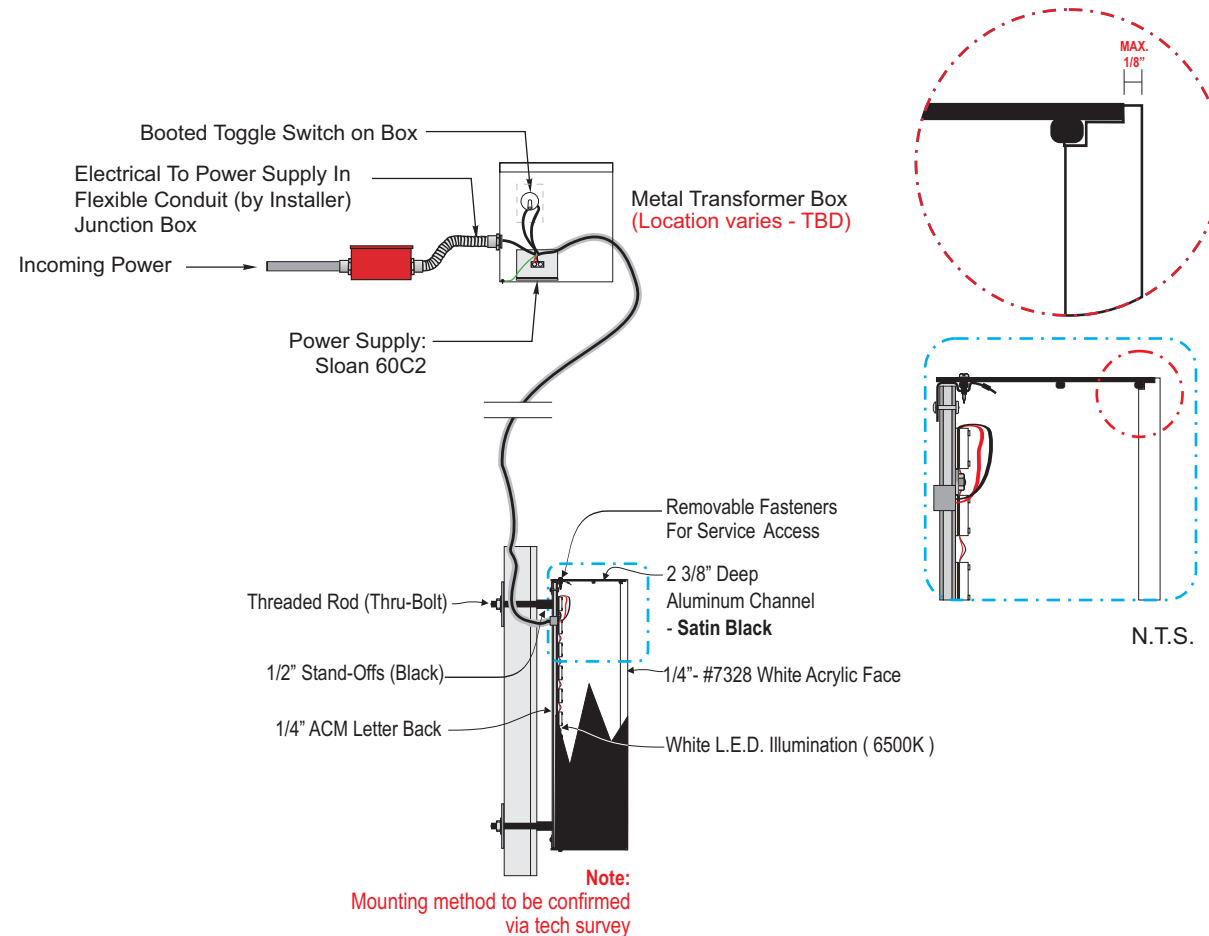


Front View

Scale: 3/4" = 1'-0" (11x17 Paper)

Specifications:

- A** Internally illuminated SDS LetterForm trimless channel letter with returns painted **satn black**.
- B** White faces to be 1/4" 7328 matte white acrylic
- C** Internally illuminated letters with 6500K Sloan white LED mounted to 1/4" ACM backs
- D** 1/4" drain holes located at the bottom of each letter as required by UL 48 for Electric Signs.
- E** Drain holes to be covered with drain hole covers to reduce light leaks.



| COLOR LEGEND | | |
|--------------|-------------|-------------|
| | PMS/PAINT | VINYL |
| | PMS 3425 C | 3M 3630-126 |
| | SATIN BLACK | NA |
| | PMS WHITE | NA |



HILTONDISPLAYS
 125 HILLSIDE DRIVE • GREENVILLE SC 29607
 P 800 353 9132 • F 864 242 2204
 www.hiltondisplays.com

QID 23-65864

JOB NAME

Starbucks 77837

LOCATION

212-226 Charlton Rd.
 Sturbridge, MA 01566

CUSTOMER CONTACT

SALESMAN / PM

Joe Nolasco

DESIGNER

Brady Taylor

DWG. DATE

xx-xx-23

REV. DATE / REVISION

SCALE

As Noted

FILE

2023/Starbucks/Locations/
 Sturbridge MA/23-65864/
 SB Sturbridge MA 23-65864

DESIGN SPECIFICATIONS ACCEPTED BY:

| | |
|---------|-----------|
| EST: | CLIENT: |
| SLS/PM: | LANDLORD: |

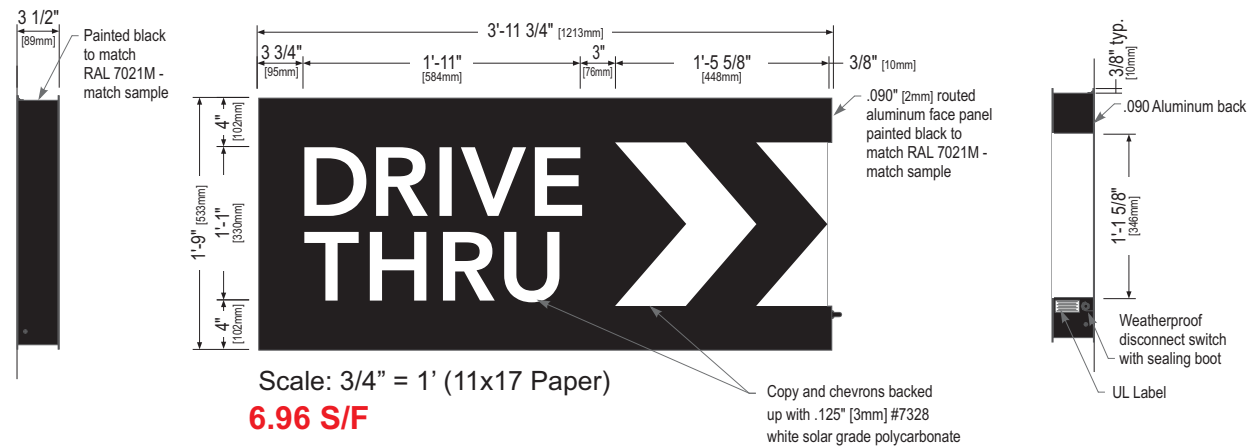
THE INTENT OF THIS DRAWING IS TO SHOW A CONCEPTUAL REPRESENTATION OF THE PROPOSED SIGNAGE. DUE TO VARIATIONS IN PRINTING DEVICES AND SUBSTRATES, THE FINISHED PRODUCT MAY DIFFER SLIGHTLY FROM DRAWING.



48" DT WALL SIGN-RH

Qty. 3

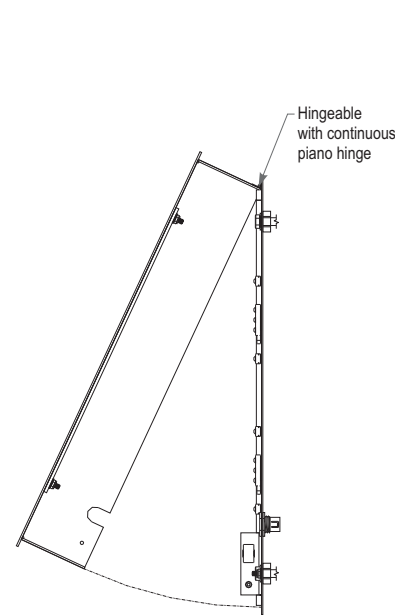
SBC-S14099-SL



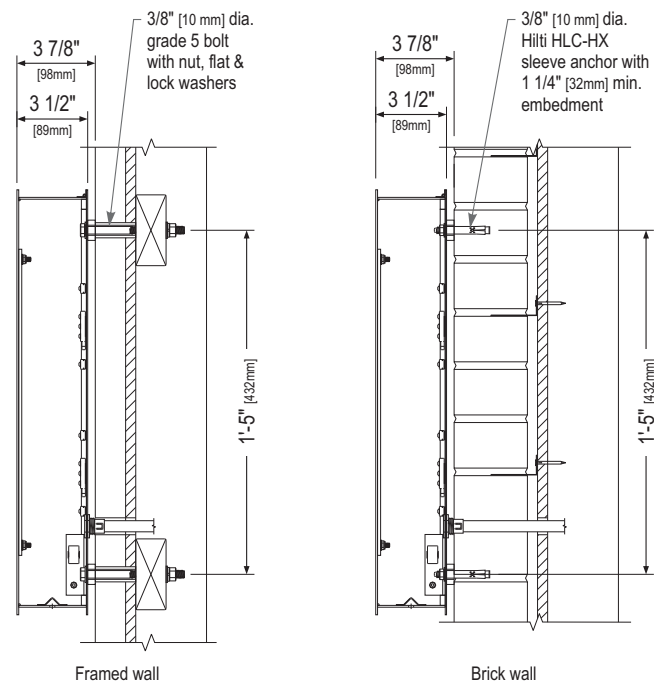
Left Side View

Front Elevation View

Right Side View



Service Position View
NOT TO SCALE



Section View at Installation Detail
NOT TO SCALE

| COLOR LEGEND | | |
|--------------|-------------|---|
| | PMS/Paint | VINYL |
| | PMS 3425 C | 3M 3630-76 |
| | RAL 7021M | 3M 3630-22 |
| | PMS WHITE | 3M 3630-20/ 7725-10 TRANSLUCENT OPAQUE |
| | PMS 369 C | NA |
| | REFL. WHITE | 3M 680-10 |

Sign Specifications:

Cabinet:

- Fabricated .090" [2mm] aluminum housing painted black to match RAL 7021M with 3M #180-10 white vinyl end cap as shown.
- Directional copy and chevrons backed up with .125" white polycarb. All polycarb face elements to be attached to aluminum face panel with weld studs.
- Welded aluminum construction with no visible fasteners. Fasteners retaining the hinged face will be located on the bottom such that they are not visible. All fasteners used in the assembly of internal components shall be coated to prevent corrosion.
- Internal structure of cabinet shall be per approved shop drawings.
- Graphic elements are internally illuminated using Sloan Prism Enlighten LEDs. LED's to be mounted on back panel with self-contained power supply. All electrical components are removable for service.

Regulatory:

- Sign must meet all regulations in the National Electric Code as well as any local or state electrical codes.
- As per NEC 600.6, sign is equipped with a service disconnect switch.
- Sign must be listed as an Electric Sign per Underwriters Laboratories UL48 and/or CSA and bear the appropriate UL, CUL or CSA relevant certification marks. Primary power by electrical contractor per NEC.

| Size | Sq. Ft. ¹ | Sq. Ft. ² | Volts | Amps |
|------|----------------------|----------------------|---------|------|
| 21" | 4.52 | 6.96 | 120/277 | 0.85 |

1: Figured as illuminated center part
 2: Figured as complete signage

HILTONDISPLAYS
 125 HILLSIDE DRIVE • GREENVILLE SC 29607
 P 800 353 9132 • F 864 242 2204
 www.hiltondisplays.com

QID 23-65864

JOB NAME

Starbucks 77837

LOCATION

212-226 Charlton Rd.
 Sturbridge, MA 01566

CUSTOMER CONTACT

SALESMAN / PM

Joe Nolasco

DESIGNER

Brady Taylor

DWG. DATE

xx-xx-23

REV. DATE / REVISION

SCALE

As Noted

FILE

2023/Starbucks/Locations/
 Sturbridge MA/23-65864/
 SB Sturbridge MA 23-65864

DESIGN SPECIFICATIONS ACCEPTED BY:

| | |
|---------|-----------|
| EST: | CLIENT: |
| SLS/PM: | LANDLORD: |

THE INTENT OF THIS DRAWING IS TO SHOW A CONCEPTUAL REPRESENTATION OF THE PROPOSED SIGNAGE. DUE TO VARIATIONS IN PRINTING DEVICES AND SUBSTRATES, THE FINISHED PRODUCT MAY DIFFER SLIGHTLY FROM DRAWING.



DIRECTIONAL - EXISTING FOUNDATION

SBC-S23071-DIR-IL-EF-ETY-44

Qty. 1

D

HILTONDISPLAYS

125 HILLSIDE DRIVE • GREENVILLE SC 29607
P 800 353 9132 • F 864 242 2204
www.hiltondisplays.com

QID 23-65864

JOB NAME

Starbucks 77837

LOCATION

212-226 Charlton Rd.
Sturbridge, MA 01566

CUSTOMER CONTACT

SALESMAN / PM

Joe Nolasco

DESIGNER

Brady Taylor

DWG. DATE

xx-xx-23

REV. DATE / REVISION

SCALE

As Noted

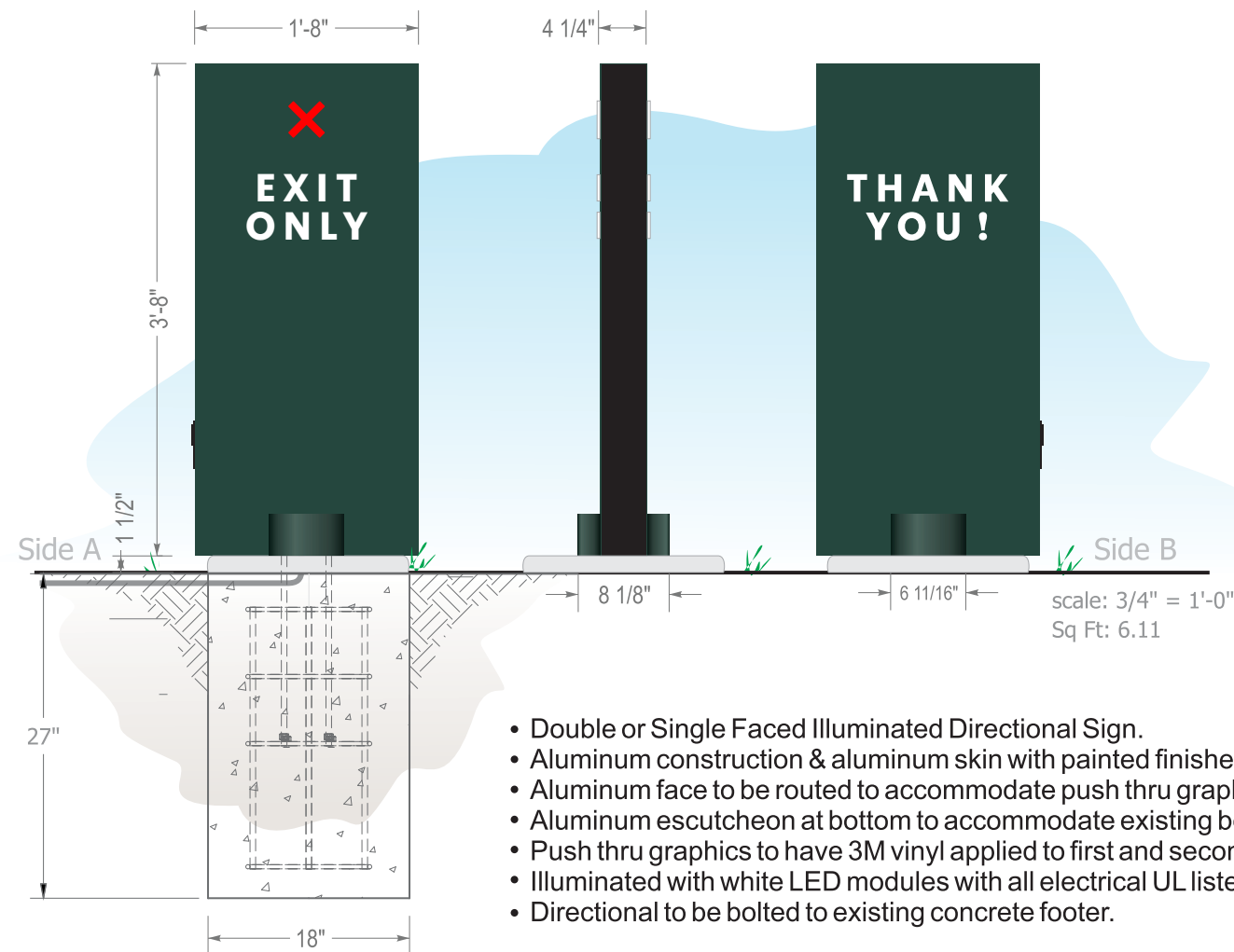
FILE

2023/Starbucks/Locations/
Sturbridge MA/23-65864/
SB Sturbridge MA 23-65864

DESIGN SPECIFICATIONS ACCEPTED BY:

| | |
|---------|-----------|
| EST: | CLIENT: |
| SLS/PM: | LANDLORD: |

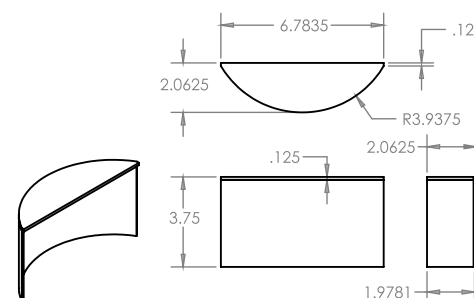
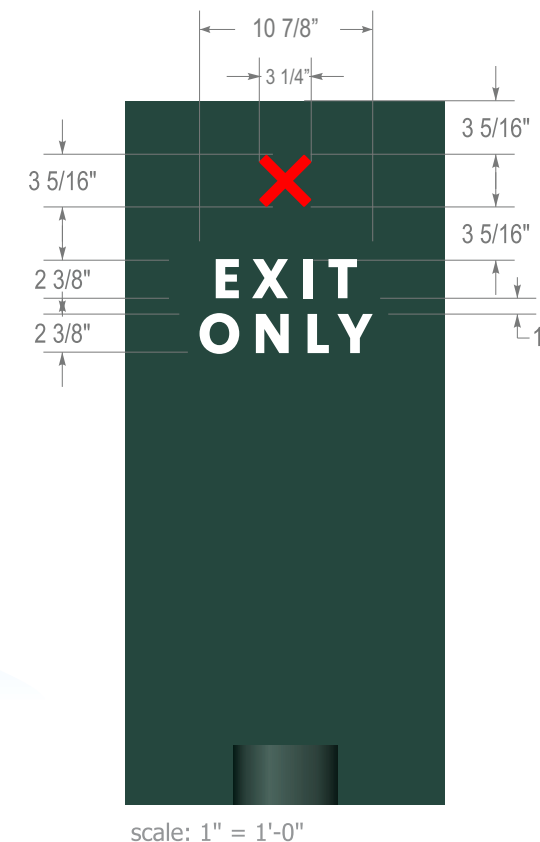
THE INTENT OF THIS DRAWING IS TO SHOW A CONCEPTUAL REPRESENTATION OF THE PROPOSED SIGNAGE. DUE TO VARIATIONS IN PRINTING DEVICES AND SUBSTRATES, THE FINISHED PRODUCT MAY DIFFER SLIGHTLY FROM DRAWING.



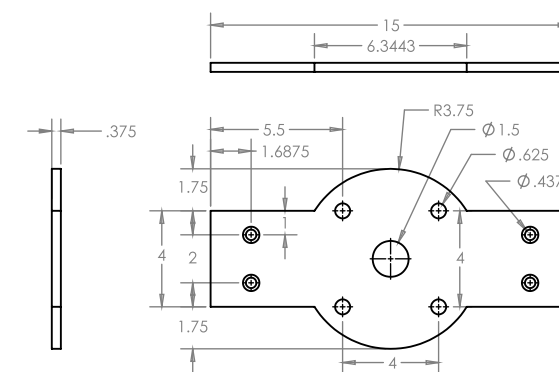
- Double or Single Faced Illuminated Directional Sign.
- Aluminum construction & aluminum skin with painted finishes.
- Aluminum face to be routed to accommodate push thru graphics.
- Aluminum escutcheon at bottom to accommodate existing bolt pattern.
- Push thru graphics to have 3M vinyl applied to first and second surface.
- Illuminated with white LED modules with all electrical UL listed and labeled.
- Directional to be bolted to existing concrete footer.

Colors:

- Painted Pantone #560 (satin finish)
- Painted Pantone 419 Black (RAL 7021M) (satin finish)
- Clear Acrylic (push thru)
- 3M White Translucent Vinyl (first surface)
- 3M Diffuser Film (second surface)



escutcheon made of
rolled .080 aluminum
and .125 aluminum
top skin welded to
face



aluminum box tube with
top removed to create u channel

DIRECTIONAL - EXISTING FOUNDATION

SBC-S23077-DIR-IL-EF-DTA-44

Qty. 1

E

HILTONDISPLAYS

125 HILLSIDE DRIVE • GREENVILLE SC 29607
P 800 353 9132 • F 864 242 2204
www.hiltondisplays.com

QID 23-65864

JOB NAME

Starbucks 77837

LOCATION

212-226 Charlton Rd.
Sturbridge, MA 01566

CUSTOMER CONTACT

SALESMAN / PM

Joe Nolasco

DESIGNER

Brady Taylor

DWG. DATE

xx-xx-23

REV. DATE / REVISION

SCALE

As Noted

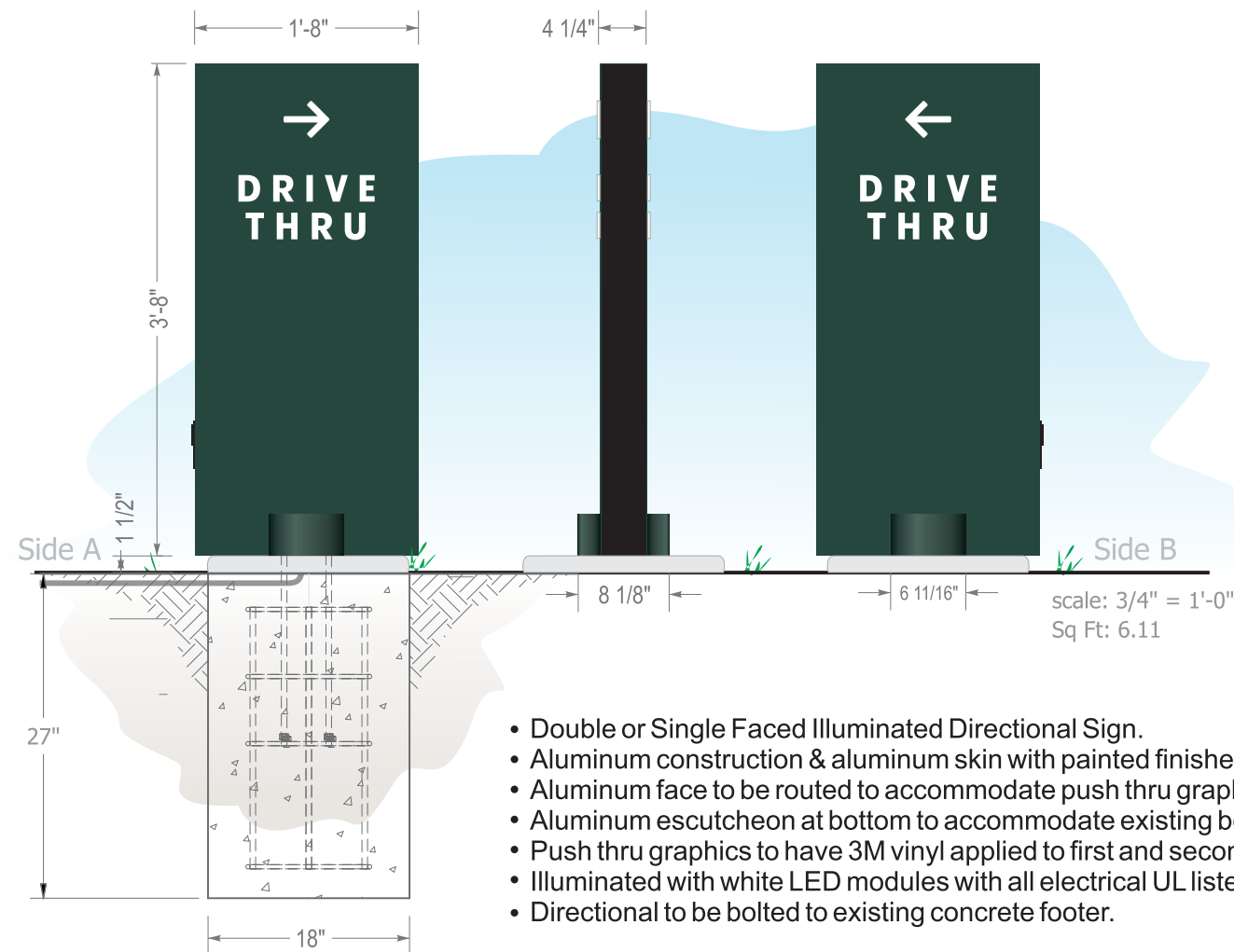
FILE

2023/Starbucks/Locations/
Sturbridge MA/23-65864/
SB Sturbridge MA 23-65864

DESIGN SPECIFICATIONS ACCEPTED BY:

| | |
|---------|-----------|
| EST: | CLIENT: |
| SLS/PM: | LANDLORD: |

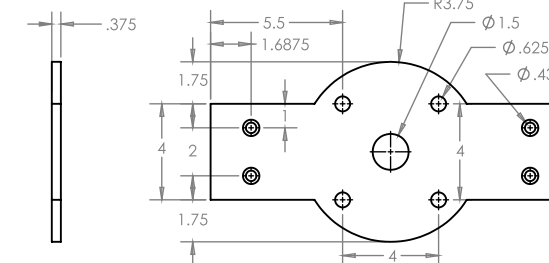
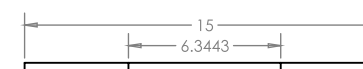
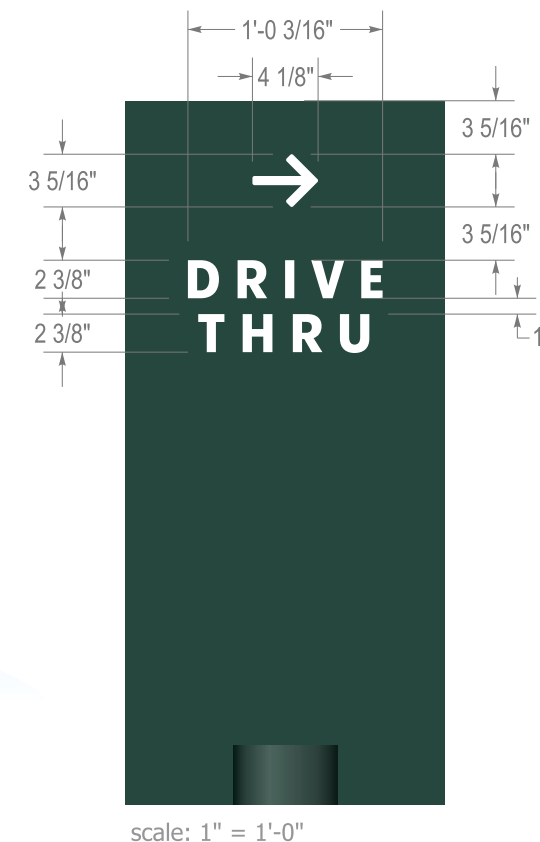
THE INTENT OF THIS DRAWING IS TO SHOW A CONCEPTUAL REPRESENTATION OF THE PROPOSED SIGNAGE. DUE TO VARIATIONS IN PRINTING DEVICES AND SUBSTRATES, THE FINISHED PRODUCT MAY DIFFER SLIGHTLY FROM DRAWING.



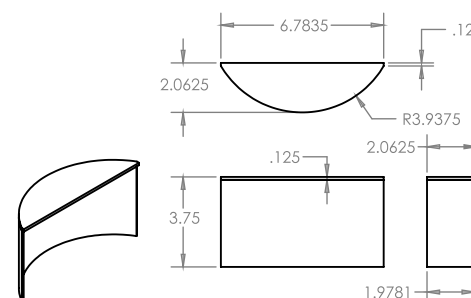
- Double or Single Faced Illuminated Directional Sign.
- Aluminum construction & aluminum skin with painted finishes.
- Aluminum face to be routed to accommodate push thru graphics.
- Aluminum escutcheon at bottom to accommodate existing bolt pattern.
- Push thru graphics to have 3M vinyl applied to first and second surface.
- Illuminated with white LED modules with all electrical UL listed and labeled.
- Directional to be bolted to existing concrete footer.

Colors:

- Painted Pantone #560 (satin finish)
- Painted Pantone 419 Black (RAL 7021M) (satin finish)
- Clear Acrylic (push thru)
- 3M White Translucent Vinyl (first surface)
- 3M Diffuser Film (second surface)



aluminum box tube with top removed to create u channel



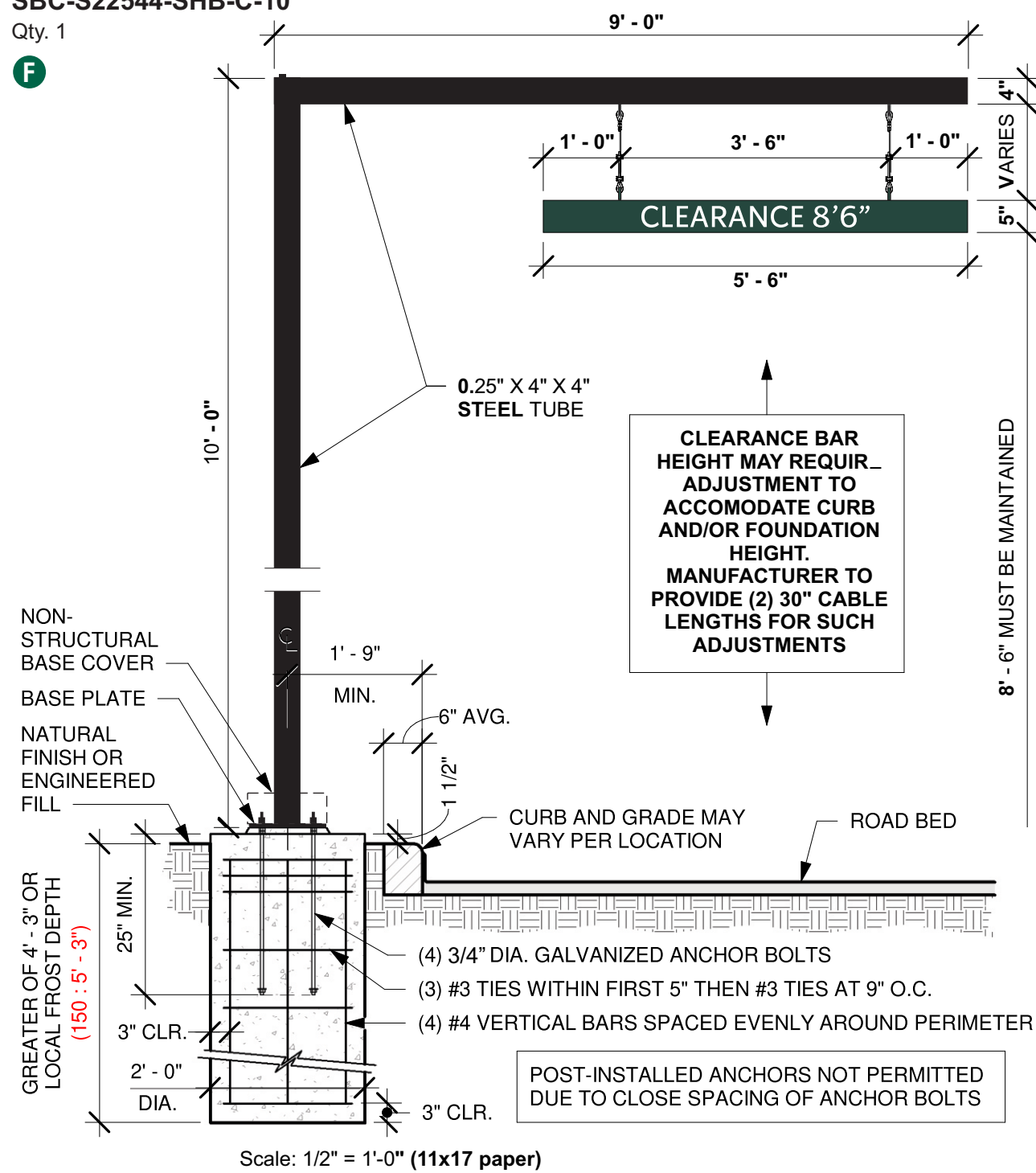
escutcheon made of rolled .080 aluminum and .125 aluminum top skin welded to face

REVOLUTION CLEARANCE BAR

SBC-S22544-SHB-C-10

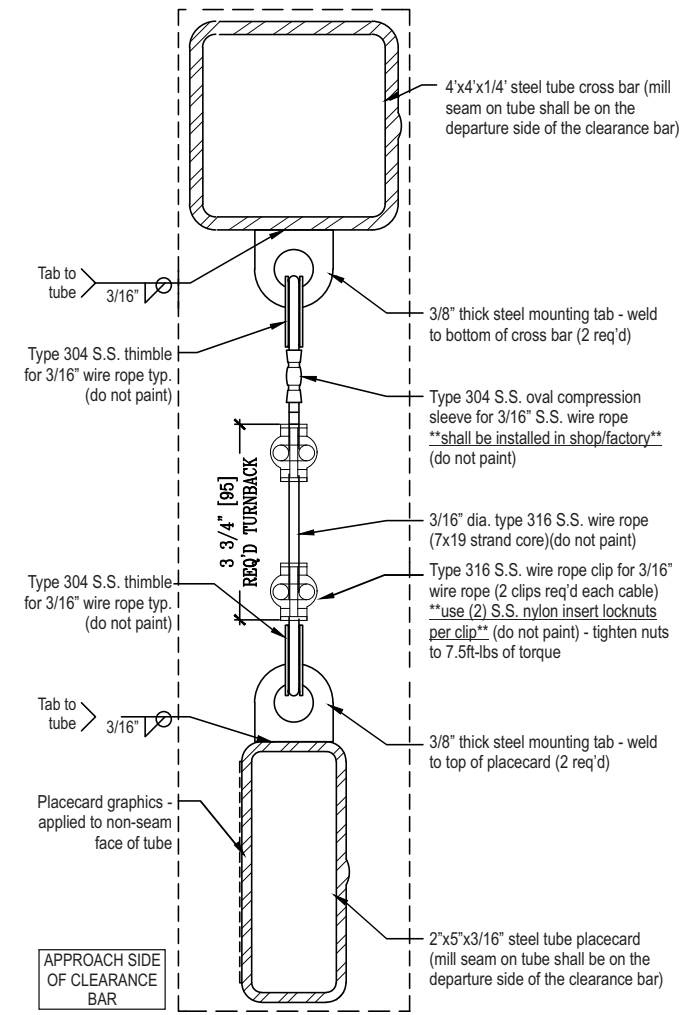
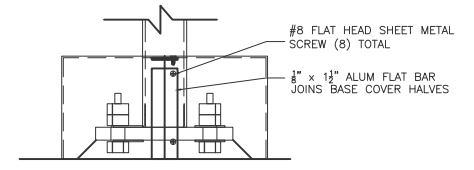
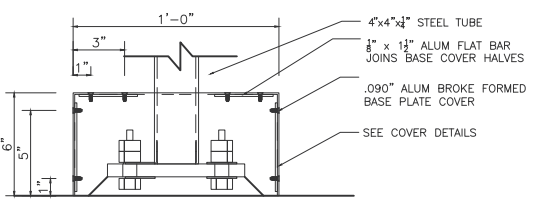
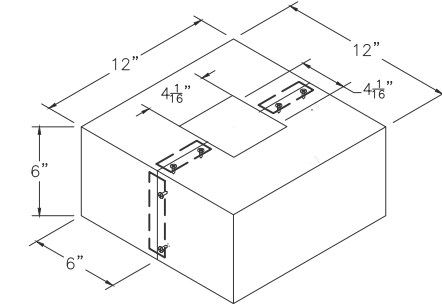
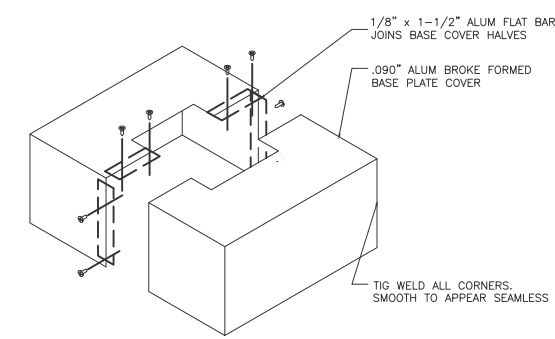
Qty. 1

F



CLEARANCE BAR HEIGHT MAY REQUIRE ADJUSTMENT TO ACCOMODATE CURB AND/OR FOUNDATION HEIGHT. MANUFACTURER TO PROVIDE (2) 30" CABLE LENGTHS FOR SUCH ADJUSTMENTS

8' - 6" MUST BE MAINTAINED



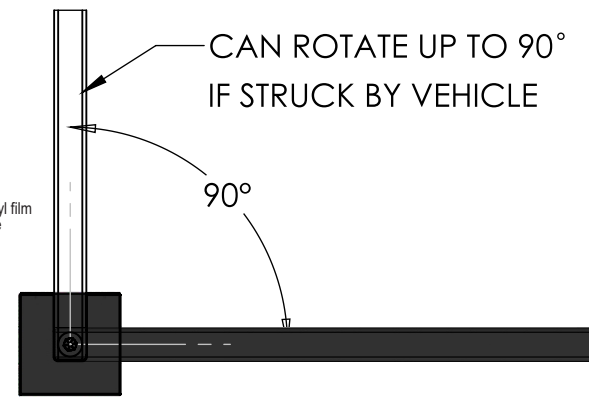
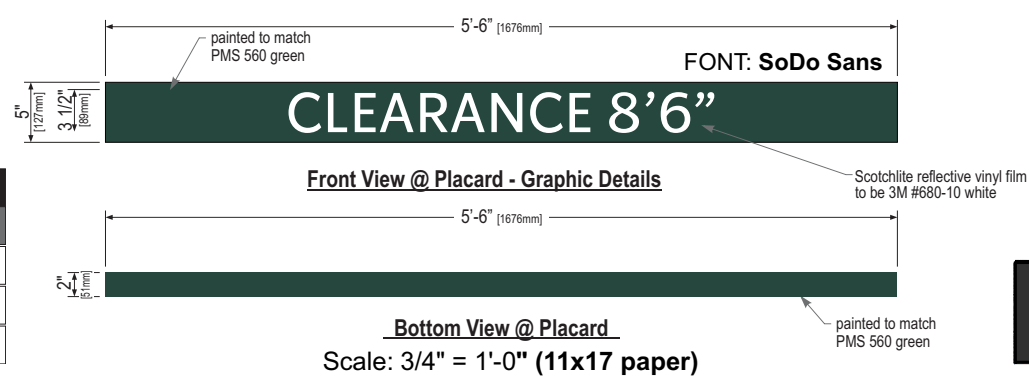
End Section View

ASSUMED CONDITIONS DESIGN LOADS

- 115 MPH wind load (150 MPH Wind Load)
 - Category II, Exposure C
 - Est. Combined Weight of Canopy & DOS: 993 Lbs.
 - Concrete Strength: MN 3000 PSI @ 28 Days
 - 2012 International Building Code, ASCE 7-10
 - Vertical Soil Bearing Pressure: 2000 PSF
- Rotate Footing Bolt pattern Relative To Drive Lane Per Site Plan & Signage Configuration Details.
- Route Conduit Per Electrical Site Plan Provide 3" Stub-Up
- GC Responsible For Foundations & Footings On All Menu Boards & Drive-Thru Elements. Signage Vendor To Supply Templates & Install Menu Boards Only.

Dimensions in Red Are For 150 MPH Wind Load

| COLOR LEGEND | | |
|--------------|-----------------------|------------|
| | PMS/PAINT | VINYL |
| | PMS 560 C | NA |
| | PSB 6865/ SATIN BLACK | 3M 3630-22 |
| | REFL. WHITE | 3M 680-10 |



HILTON DISPLAYS
 125 HILLSIDE DRIVE • GREENVILLE SC 29607
 P 800 353 9132 • F 864 242 2204
 www.hiltondisplays.com

QID 23-65864

JOB NAME

Starbucks 77837

LOCATION

212-226 Charlton Rd.
Sturbridge, MA 01566

CUSTOMER CONTACT

SALESMAN / PM

Joe Nolasco

DESIGNER

Brady Taylor

DWG. DATE

xx-xx-23

REV. DATE / REVISION

SCALE

As Noted

FILE

2023/Starbucks/Locations/
Sturbridge MA/23-65864/
SB Sturbridge MA 23-65864

DESIGN SPECIFICATIONS ACCEPTED BY:

EST: CLIENT:

SLS/PM: LANDLORD:

THE INTENT OF THIS DRAWING IS TO SHOW A CONCEPTUAL REPRESENTATION OF THE PROPOSED SIGNAGE. DUE TO VARIATIONS IN PRINTING DEVICES AND SUBSTRATES, THE FINISHED PRODUCT MAY DIFFER SLIGHTLY FROM DRAWING.

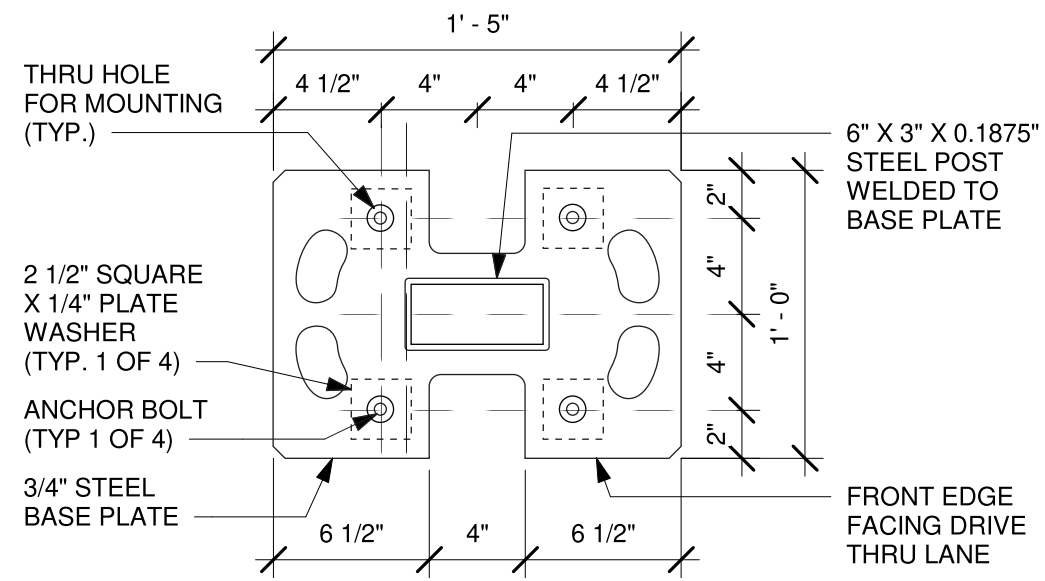
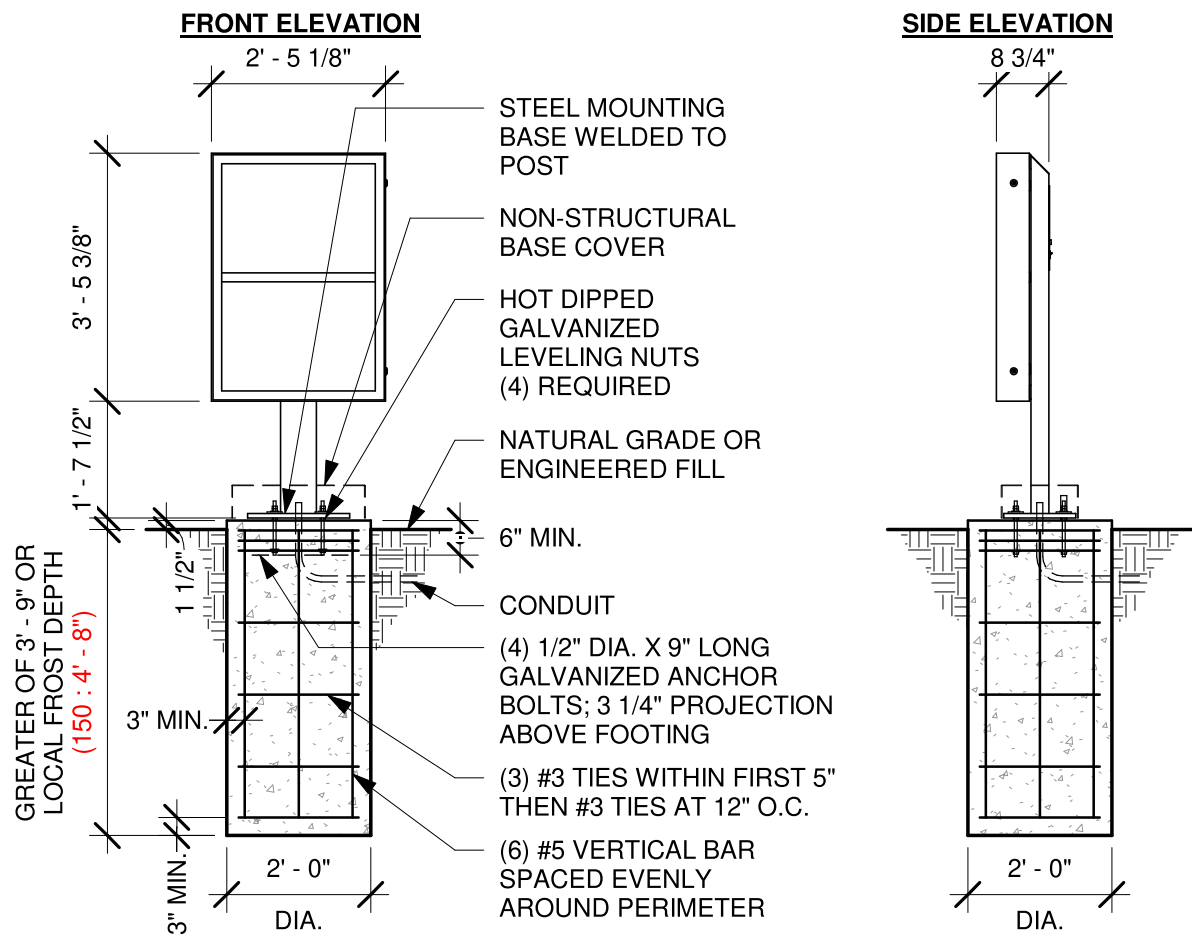
Underwriters Laboratories Inc.

DRY
DAMP
WET

PRE-MENU BOARD - INSTALL ONLY

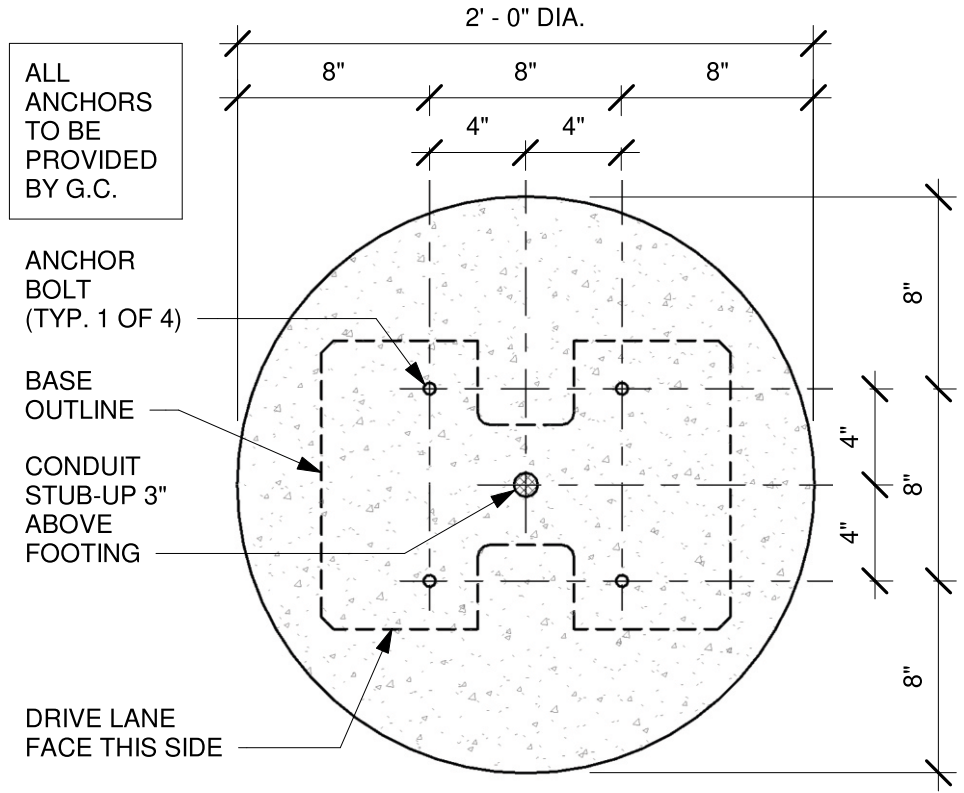
Qty. 1

G



BASE PLATE

scale: 1 1/2" = 1'



BOLT PATTERN (TOP VIEW)

Scale: 1 1/2" = 1'-0"

DT PRE-MENU GROUND FOOTING

Scale: 3/8" = 1'-0"



HILTONDISPLAYS
 125 HILLSIDE DRIVE • GREENVILLE SC 29607
 P 800 353 9132 • F 864 242 2204
 www.hiltondisplays.com

| | |
|---|--|
| QID 23-65864 | |
| JOB NAME | |
| Starbucks 77837 | |
| LOCATION | |
| 212-226 Charlton Rd. Sturbridge, MA 01566 | |
| CUSTOMER CONTACT | |
| SALESMAN / PM | |
| Joe Nolasco | |
| DESIGNER | |
| Brady Taylor | |
| DWG. DATE | |
| xx-xx-23 | |
| REV. DATE / REVISION | |
| | |
| | |
| | |
| | |
| SCALE | |
| As Noted | |
| FILE | |
| 2023/Starbucks/Locations/ Sturbridge MA/23-65864/ SB Sturbridge MA 23-65864 | |

DESIGN SPECIFICATIONS ACCEPTED BY:

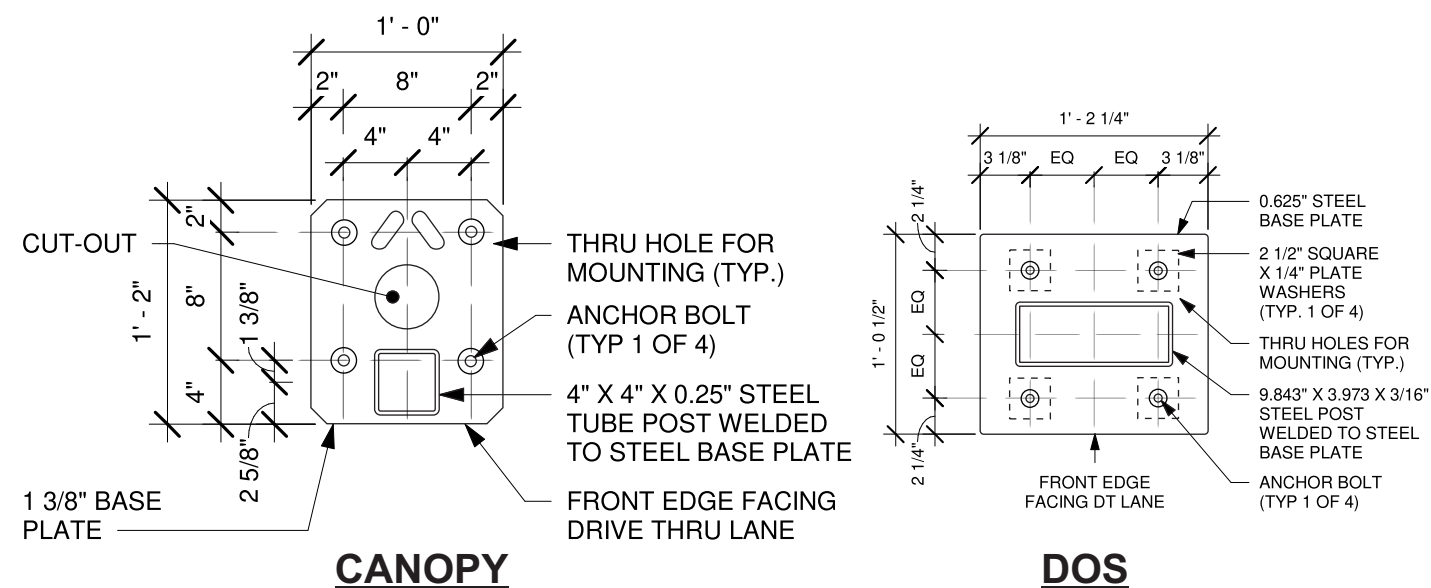
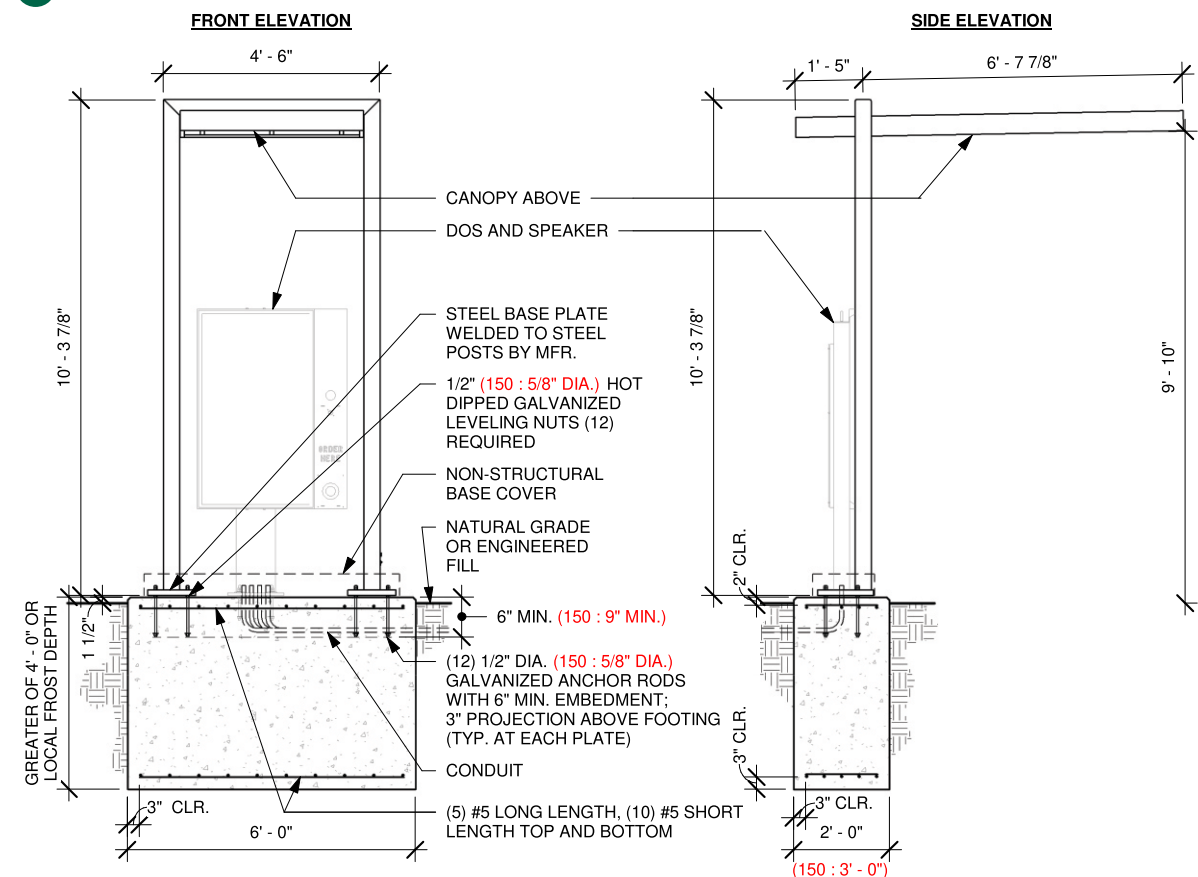
| | |
|---------|-----------|
| EST: | CLIENT: |
| SLS/PM: | LANDLORD: |

THE INTENT OF THIS DRAWING IS TO SHOW A CONCEPTUAL REPRESENTATION OF THE PROPOSED SIGNAGE. DUE TO VARIATIONS IN PRINTING DEVICES AND SUBSTRATES, THE FINISHED PRODUCT MAY DIFFER SLIGHTLY FROM DRAWING.



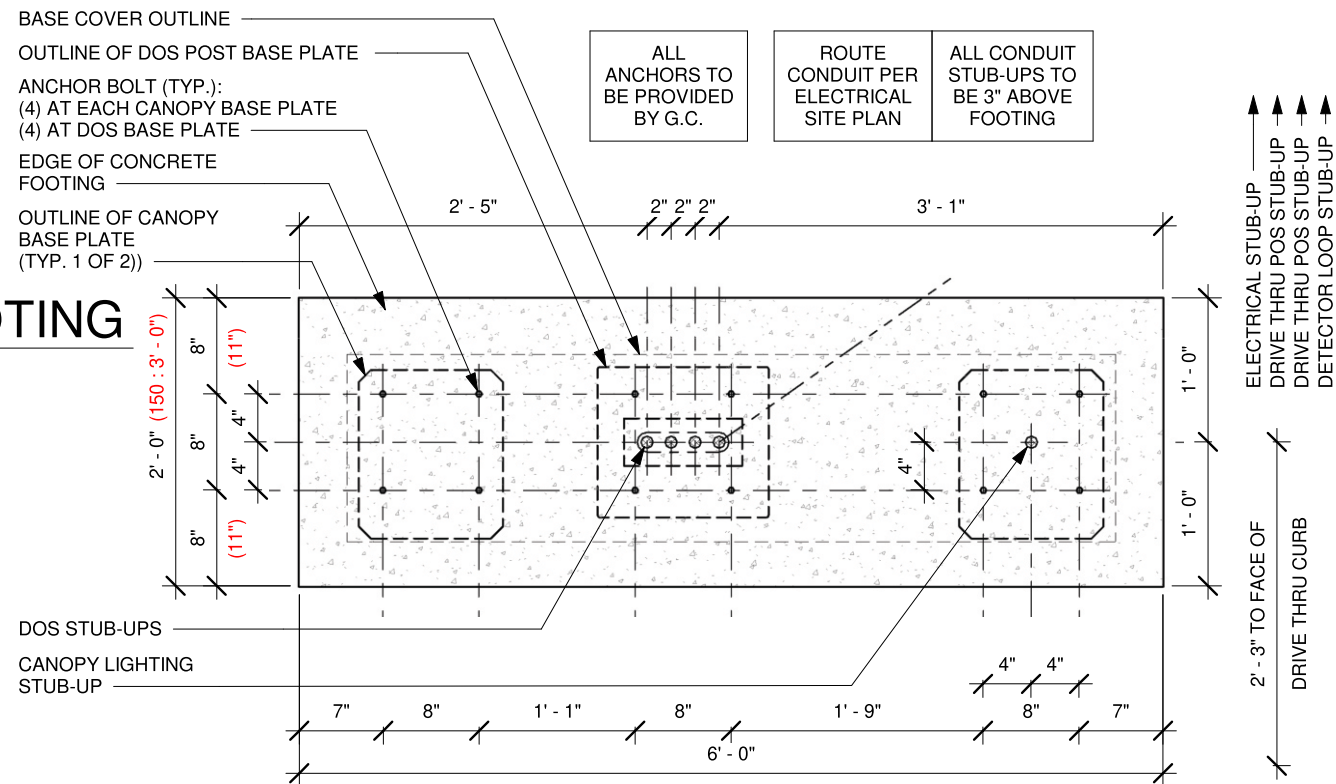
CANOPY - INSTALL ONLY

Qty. 1



BASE PLATE

Scale: 1" = 1'-0"



BOLT PATTERN (TOP VIEW)

scale: 3/4" = 1'

DT DIGITAL ORDER SCREEN CANOPY GROUND FOOTING

scale: 1/4" = 1'



HILTONDISPLAYS

125 HILLSIDE DRIVE • GREENVILLE SC 29607
P 800 353 9132 • F 864 242 2204
www.hiltiondisplays.com

QID 23-65864

JOB NAME

Starbucks 77837

LOCATION

212-226 Charlton Rd.
Sturbridge, MA 01566

CUSTOMER CONTACT

SALESMAN / PM

Joe Nolasco

DESIGNER

Brady Taylor

DWG. DATE

xx-xx-23

REV. DATE / REVISION

SCALE

As Noted

FILE

2023/Starbucks/Locations/
Sturbridge MA/23-65864/
SB Sturbridge MA 23-65864

DESIGN SPECIFICATIONS ACCEPTED BY:

EST: CLIENT:

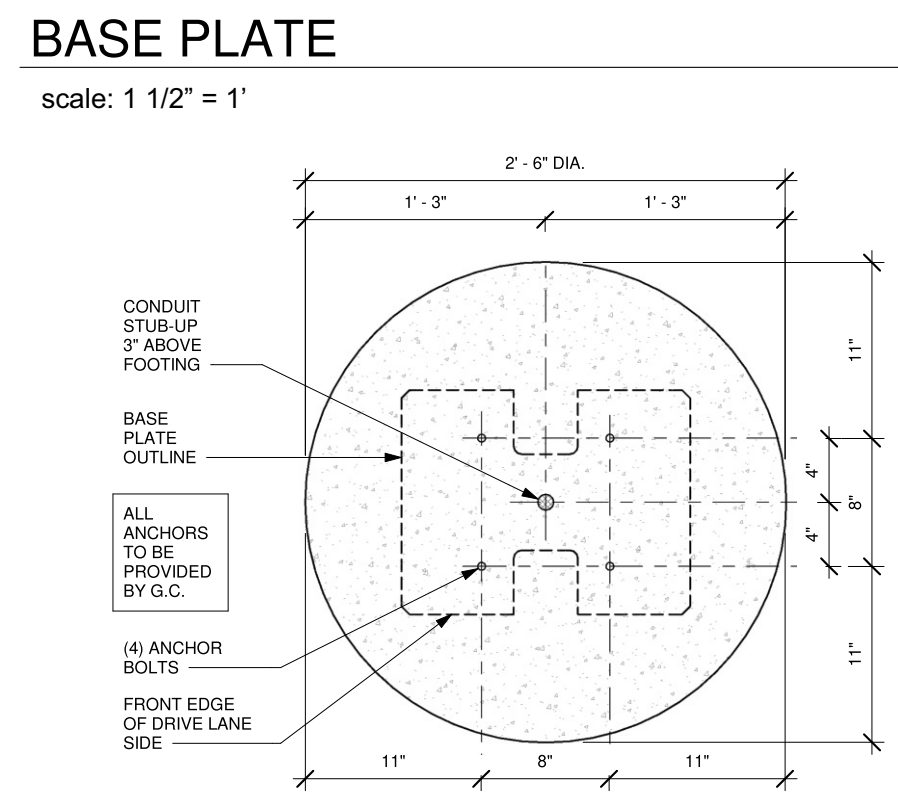
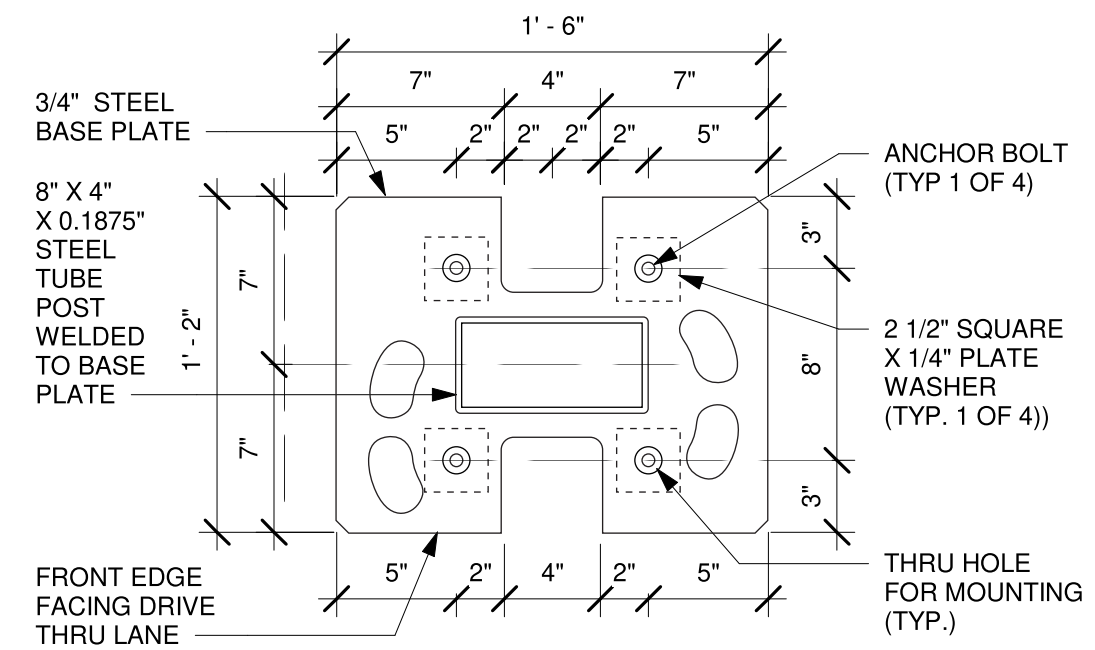
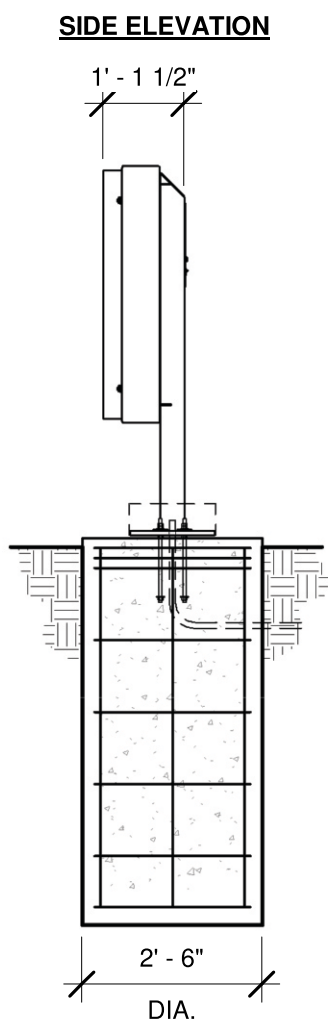
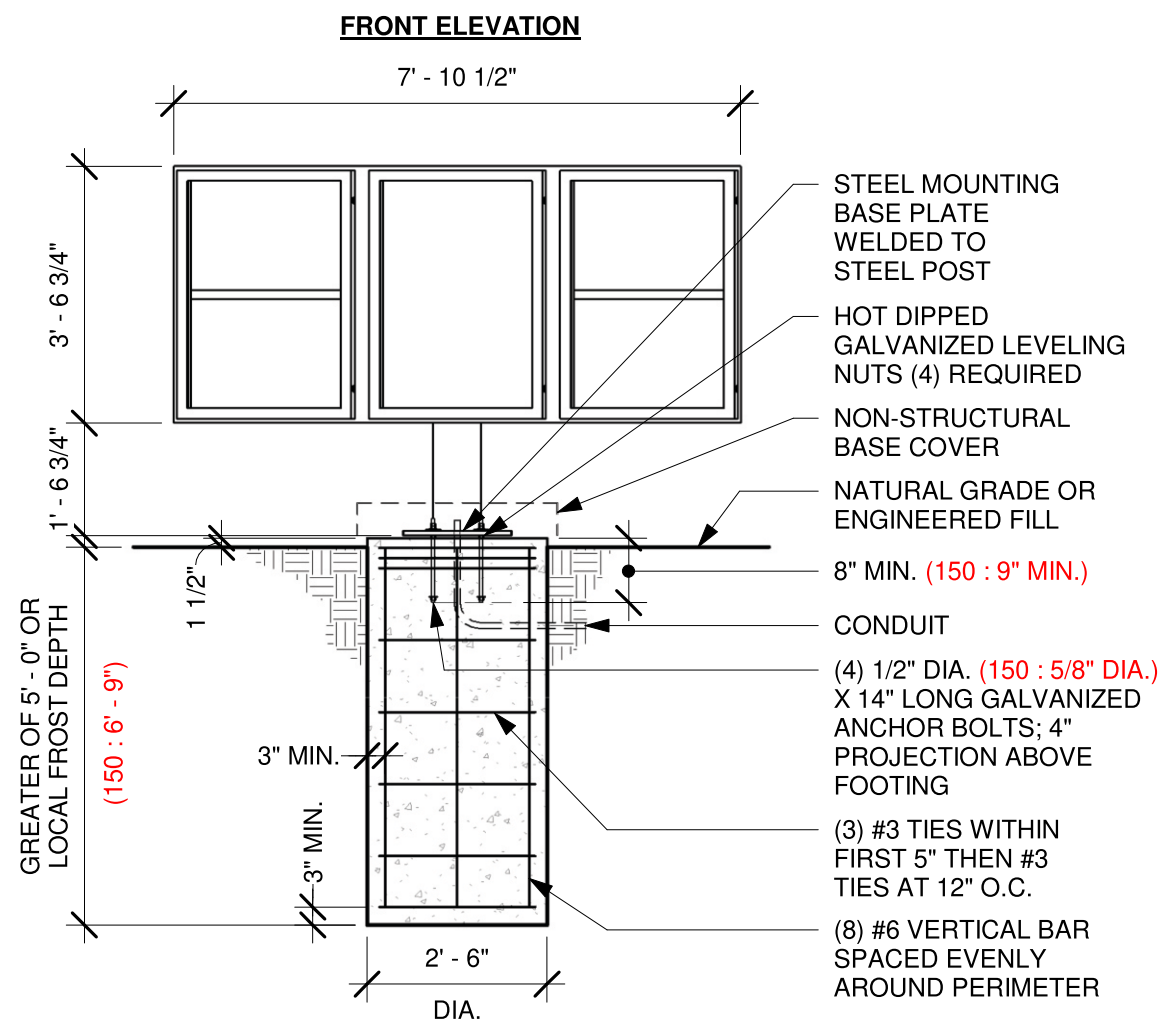
SLS/PM: LANDLORD:

THE INTENT OF THIS DRAWING IS TO SHOW A CONCEPTUAL REPRESENTATION OF THE PROPOSED SIGNAGE. DUE TO VARIATIONS IN PRINTING DEVICES AND SUBSTRATES, THE FINISHED PRODUCT MAY DIFFER SLIGHTLY FROM DRAWING.



MENU BOARD - INSTALL ONLY Note: - All steel shall be A36 Galvanized or A304 Stainless Steel

Qty. 1



HILTONDISPLAYS
125 HILLSIDE DRIVE • GREENVILLE SC 29607
P 800 353 9132 • F 864 242 2204
www.hiltondisplays.com

QID 23-65864

JOB NAME

Starbucks 77837

LOCATION

212-226 Charlton Rd.
Sturbridge, MA 01566

CUSTOMER CONTACT

SALESMAN / PM

Joe Nolasco

DESIGNER

Brady Taylor

DWG. DATE

xx-xx-23

REV. DATE / REVISION

SCALE

As Noted

FILE

2023/Starbucks/Locations/
Sturbridge MA/23-65864/
SB Sturbridge MA 23-65864

DESIGN SPECIFICATIONS ACCEPTED BY:

EST: CLIENT:

SLS/PM: LANDLORD:

THE INTENT OF THIS DRAWING IS TO SHOW A CONCEPTUAL REPRESENTATION OF THE PROPOSED SIGNAGE. DUE TO VARIATIONS IN PRINTING DEVICES AND SUBSTRATES, THE FINISHED PRODUCT MAY DIFFER SLIGHTLY FROM DRAWING.

Underwriters Laboratories Inc.

DRY
DAMP
WET

UL logo

PYLON PANEL

SBC-

Qty. 1



TBD

HILTONDISPLAYS

125 HILLSIDE DRIVE • GREENVILLE SC 29607
P 800 353 9132 • F 864 242 2204
www.hiltondisplays.com

QID 23-65864

JOB NAME

Starbucks 77837

LOCATION

212-226 Charlton Rd.
Sturbridge, MA 01566

CUSTOMER CONTACT

SALESMAN / PM

Joe Nolasco

DESIGNER

Brady Taylor

DWG. DATE

xx-xx-23

REV. DATE / REVISION

SCALE

As Noted

FILE

2023/Starbucks/Locations/
Sturbridge MA/23-65864/
SB Sturbridge MA 23-65864

DESIGN SPECIFICATIONS ACCEPTED BY:

| | |
|---------|-----------|
| EST: | CLIENT: |
| SLS/PM: | LANDLORD: |

THE INTENT OF THIS DRAWING IS TO SHOW A CONCEPTUAL REPRESENTATION OF THE PROPOSED SIGNAGE. DUE TO VARIATIONS IN PRINTING DEVICES AND SUBSTRATES, THE FINISHED PRODUCT MAY DIFFER SLIGHTLY FROM DRAWING.

