

Dunkin' | 120 Main Street, Sturbridge, MA 01566 | NextGen Branding Package | August 11, 2021



Exclusive Brand Identity Warranty Program

Poyant is the only Approved DBI Brands Vendor to provide an Exclusive 3 Year Comprehensive Labor and Material Warranty on all aspects of the Dunkin' Donuts and Baskin Robbins Brand Package.

Our Warranty to you is supported by the largest installation and service fleet in New England as well as a reliable, qualified national network.

Poyant's Exclusive 3 Year Warranty Program for DBI includes:

Comprehensive Warranty including all labor and material and covers the following:

- Construction and framework of your displays
- Paint finish against peeling and noticeable fading of acrylic polyurethane finishes
- Polycarbonate G.E. Lexan faces are guaranteed against breakage
- All internal lighting components, electrical system, LED's and power supplies
- Steel support structures

Factory Trained Service Technicians anywhere in New England

For shipped sign product warranty covers sign product only

Customer _____

Location _____

Install Date _____

_____ Poyant _____ Date

Excludes "Acts of God", Hurricanes, Unusual Flooding, and Fire.

Poyant
Building Your Brand



Digital Menu Board by Others
Angled 30° Towards Street

Proposed Drive Thru Canopy
See Page 5A.1

Proposed Height Detector
See Page 4A.1

Proposed Pylon Refurbish & Reface
See Page 2A.1 - 3A.1

Proposed Dimensional Graphics
See Page 1A.1

Poyant
Building Your Brand

125 Samuel Bernet Boulevard
New Bedford, MA 02745
800.544.0961 | poyantsigns.com

DUNKIN'

120 Main Street
Sturbridge, MA 01566

Project: 20040
Dunkin'

Sales: Bill Gavigan Jr.
Date: 8.11.21
Designer: RMA

Note:
This is an original unpublished drawing created by Poyant Signs, Inc. It is submitted for your personal use in connection with a project being planned for you by Poyant Signs, Inc. It is not to be shown to anyone outside your organization, nor is it to be reproduced, copied or exhibited in any fashion until transferred.

Revisions:



This sign is intended to be installed in accordance with the requirements of Article 600 of the National Electrical Code and / or other applicable local codes. This includes proper grounding and bonding of the sign.



All Signage Shown is Covered by Poyant's Exclusive DD Franchisee 3 Year Brand Identity Warranty Program

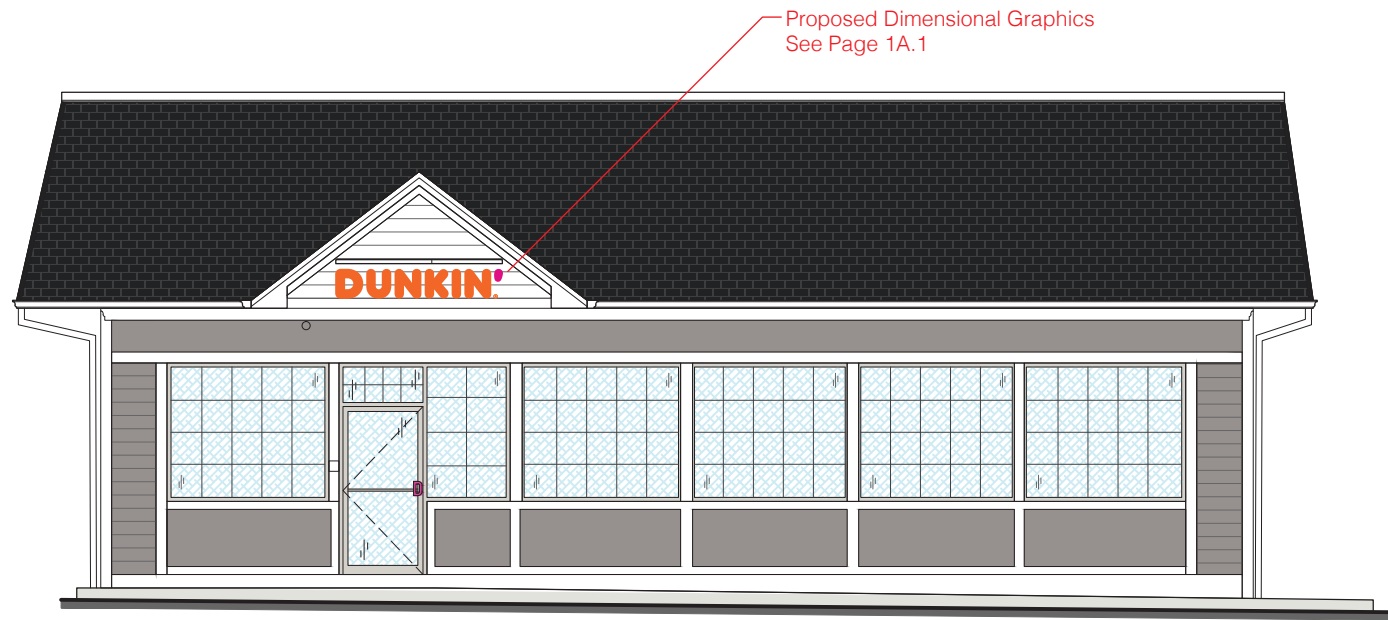
Approved By:

Bill Gavigan

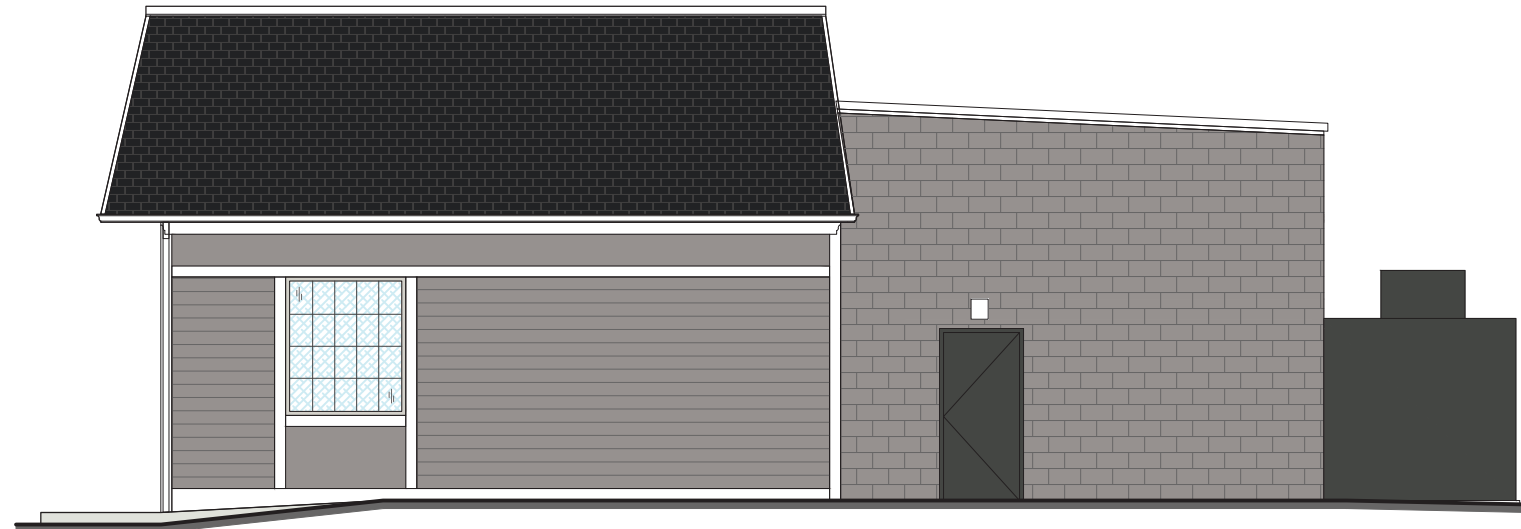
Date:

Sign Location Plan

-  SW Gaunlet Gray
-  SW Iron Ore
-  SW Nebulous White



(A) Proposed West Elevation
Scale: 1/8"=1'-0"



(B) Proposed South Elevation
Scale: 1/8"=1'-0"

Note:
This is an original unpublished drawing created by Poyant Signs, Inc. It is submitted for your personal use in connection with a project being planned for you by Poyant Signs, Inc. It is not to be shown to anyone outside your organization, nor is it to be reproduced, copied or exhibited in any fashion until transferred.

Revisions:



This sign is intended to be installed in accordance with the requirements of Article 600 of the National Electrical Code and / or other applicable local codes. This includes proper grounding and bonding of the sign.



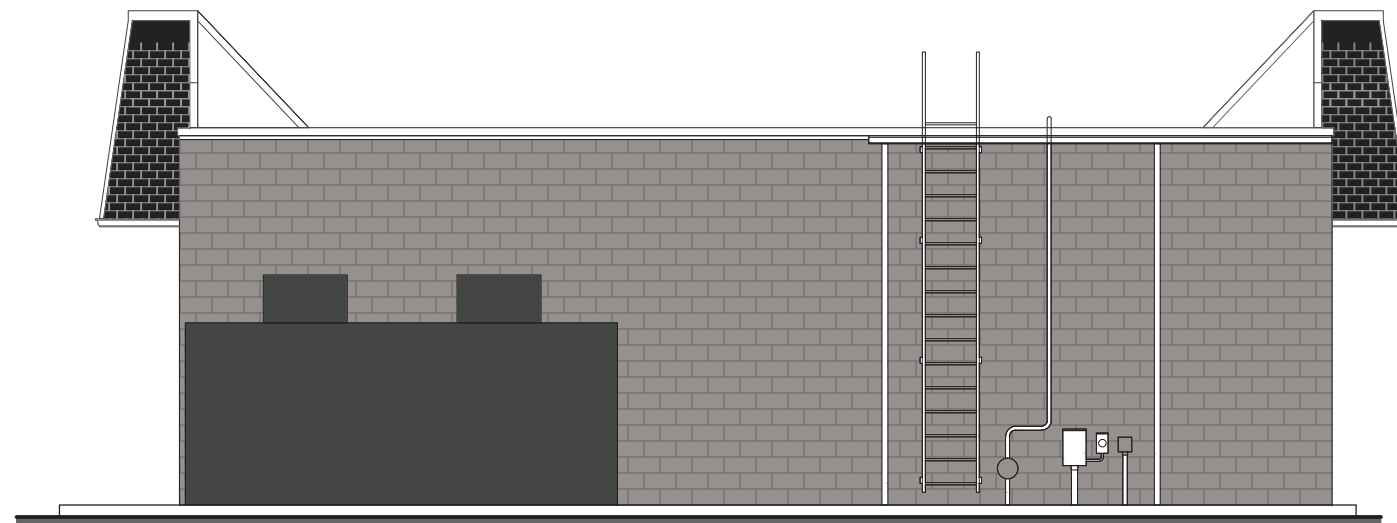
All Signage Shown is Covered by Poyant's Exclusive DD Franchisee 3 Year Brand Identity Warranty Program

Approved By:

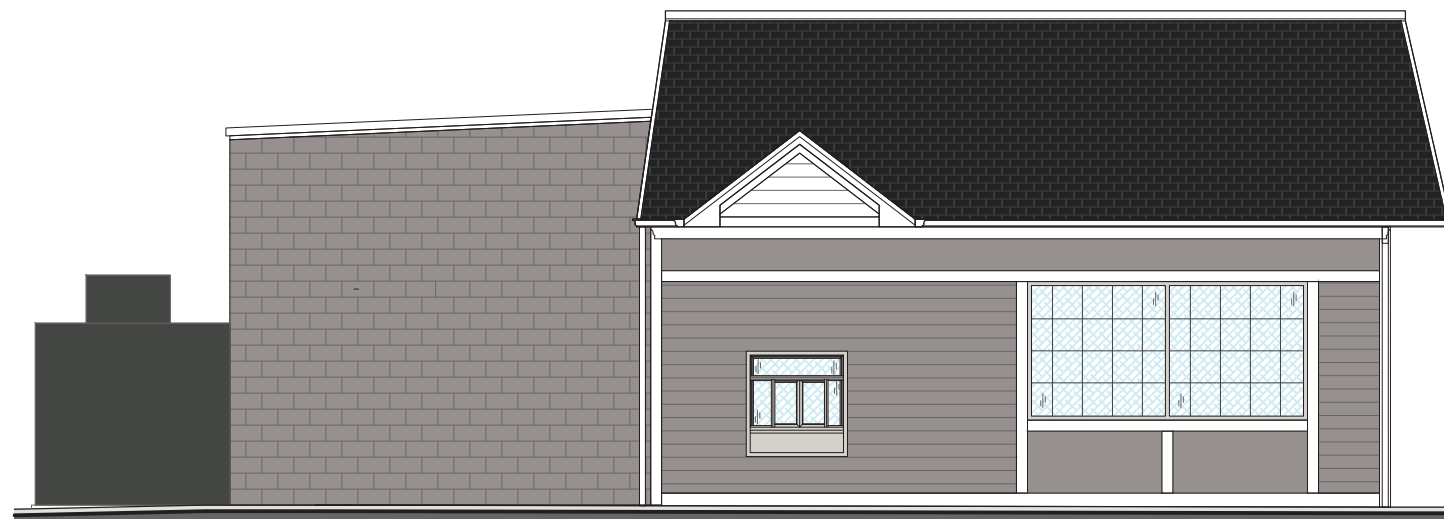
Bill Gavigan

Date:

Proposed Elevations



C Proposed East Elevation
Scale: 1/8"=1'-0"



D Proposed North Elevation
Scale: 1/8"=1'-0"

Note:
This is an original unpublished drawing created by Poyant Signs, Inc. It is submitted for your personal use in connection with a project being planned for you by Poyant Signs, Inc. It is not to be shown to anyone outside your organization, nor is it to be reproduced, copied or exhibited in any fashion until transferred.

Revisions:



This sign is intended to be installed in accordance with the requirements of Article 600 of the National Electrical Code and / or other applicable local codes. This includes proper grounding and bonding of the sign.



All Signage Shown is Covered by Poyant's Exclusive DD Franchisee 3 Year Brand Identity Warranty Program

Approved By:

Bill Gavigan
Date:

Proposed Elevations



A Sign Elevation - Front View
Scale: 1"=1'-0"



B Sign Elevation - Side View
Scale: 1"=1'-0"

Specifications

Qty: 1 8.73 Sq Ft

Single Face Non Illuminated Dimensional Building Sign

- 3/4" deep routed white PVC
- "Dunkin" to have face and returns painted PMS 165C
- All other graphics to have faces and returns painted PMS 219C
- ® to be 1/2" white PVC with vinyl applied to face; blind stud mounted flush to wall (with 1 stud on back)

Colors & Materials

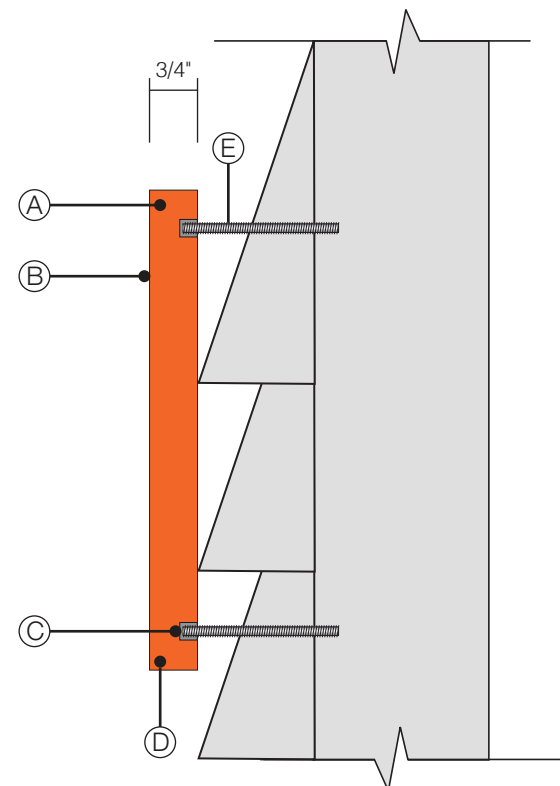
Paint

- Paint to Match PMS 219C; Gloss Finish
- Paint to Match PMS 165C; Gloss Finish

- A** 3/4" Thick White PVC
- B** Face Painted
- C** Threaded Nutsert to Receive Threaded Rod
- D** Returns Painted
- E** Long 1/4-20 Stainless Steel Threaded Rod for Installation; Drill Hole in Wall & Fill with Silicone

*Dimensional Graphics Must Hit Two Corregations so Mounting is Flush

C Construction Detail - Side Section View
Not to Scale



125 Samuel Barnet Boulevard
New Bedford, MA 02745
800.544.0961 | poyantsigns.com



120 Main Street
Sturbridge, MA 01566

Project: 20040
Dunkin'

Sales: Bill Gavigan Jr.
Date: 8.11.21
Designer: RMA

Note:
This is an original unpublished drawing created by Poyant Signs, Inc. It is submitted for your personal use in connection with a project being planned for you by Poyant Signs, Inc. It is not to be shown to anyone outside your organization, nor is it to be reproduced, copied or exhibited in any fashion until transferred.

Revisions:



This sign is intended to be installed in accordance with the requirements of Article 600 of the National Electrical Code and / or other applicable local codes. This includes proper grounding and bonding of the sign.



All Signage Shown is Covered by Poyant's Exclusive DD Franchisee 3 Year Brand Identity Warranty Program

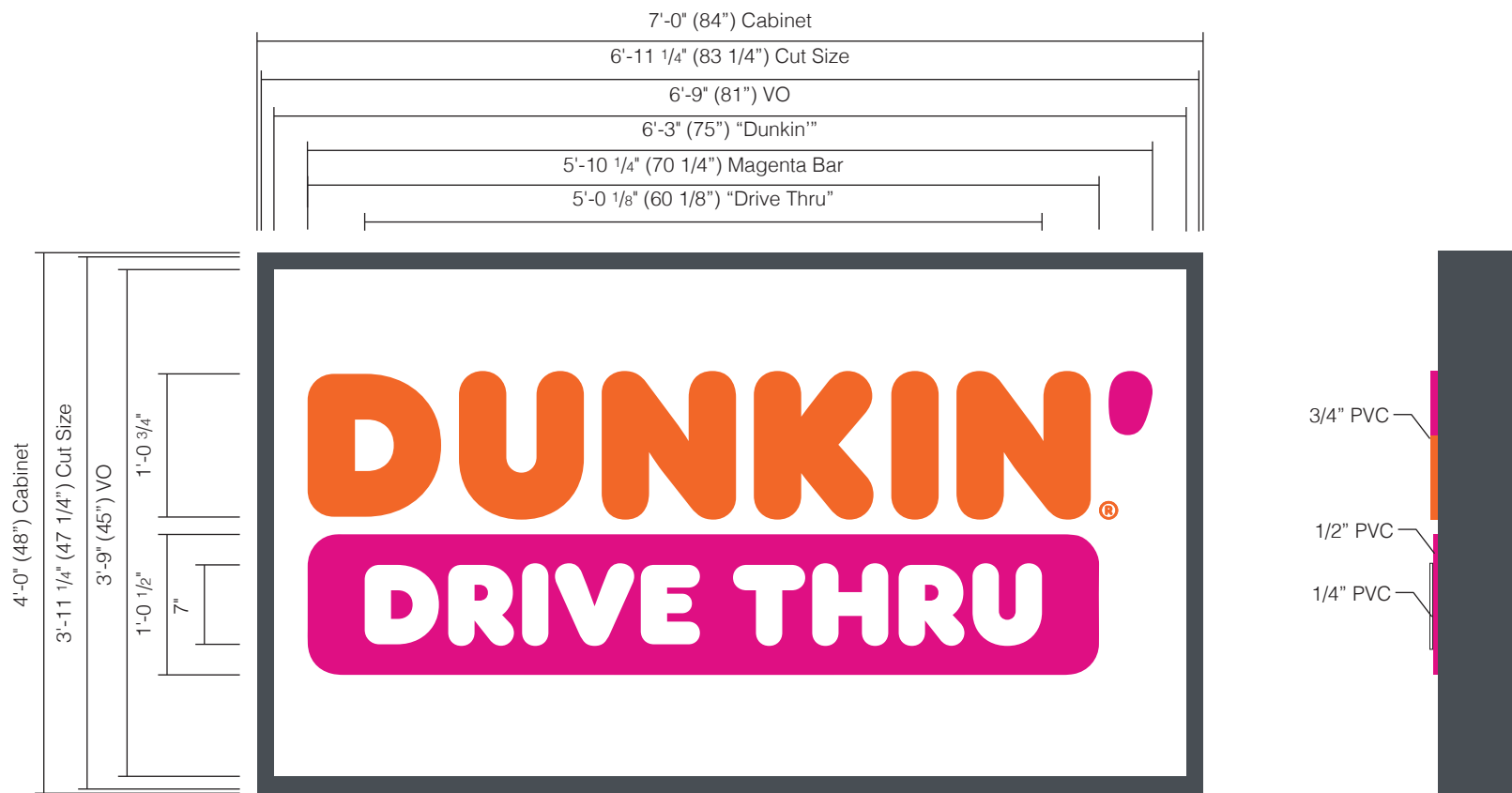
Approved By:

Bill Gavigan

Date:

Dimensional Graphics

Option A



A Sign Elevation - Front View
Scale: 3/4"=1'-0"

Specifications

Qty = 1 28 Sq Ft

Refurbish Existing Pylon

*Remove and dispose of existing Pylon faces
*Cabinets, retainers and poles to be sanded and painted Westcott Navy by others

- (Qty: 2) Faces to 3mm ACM with dimensional graphics applied first surface
- "Dunkin'" to be 3/4" PVC with faces and returns painted to Match PMS 165C and PMS 219C
- Magenta band to be 1/2" PVC with faces and returns painted PMS 219C
- "Drive Thru" to be 1/4" PVC with faces and returns painted white; fastened to magenta band flush using blind studs
- All other graphics to be blind stud mounted flush to flush

Colors & Materials

Paint

- Paint to Match PMS 219C; Gloss Finish
- Paint to Match PMS 165C; Gloss Finish
- White; Gloss Finish

Paint in Field

- Westcott Navy; Satin Finish Benjamin Moore 1624



125 Samuel Barnet Boulevard
New Bedford, MA 02745
800.544.0961 | poyantsigns.com



120 Main Street
Sturbridge, MA 01566

Project: 20040
Dunkin'

Sales: Bill Gavigan Jr.
Date: 8.11.21
Designer: RMA

Note:
This is an original unpublished drawing created by Poyant Signs, Inc. It is submitted for your personal use in connection with a project being planned for you by Poyant Signs, Inc. It is not to be shown to anyone outside your organization, nor is it to be reproduced, copied or exhibited in any fashion until transferred.

Revisions:



This sign is intended to be installed in accordance with the requirements of Article 600 of the National Electrical Code and / or other applicable local codes. This includes proper grounding and bonding of the sign.



All Signage Shown is Covered by Poyant's Exclusive DD Franchisee 3 Year Brand Identity Warranty Program

Approved By:

Bill Gavigan

Date:

Refurbish Existing Pylon

Option A



C Photo Comp - Existing
Not to Scale



D Photo Comp - Proposed
Not to Scale

See Page 3A.1



A Sign Elevation - Front View
Scale: 3"=1'-0"

Specifications

Qty = 2 1.5 Sq Ft

Replacement Faces

*Remove and Dispose of Existing Address Panel

- (Qty: 2) Faces to .063 aluminum painted white
- Graphics to be opaque vinyl applied first surface
- Panels to be mounted to either side of pole thru face with fasteners as required

Colors & Materials

Vinyl

■ Dark Gray Arlon 2100-52

Paint

□ White; Gloss Finish



125 Samuel Bernet Boulevard
New Bedford, MA 02745
800.544.0961 | poyant signs.com



120 Main Street
Sturbridge, MA 01566

Project: 20040
Dunkin'

Sales: Bill Gavigan Jr.
Date: 8.11.21
Designer: RMA

Note:
This is an original unpublished drawing created by Poyant Signs, Inc. It is submitted for your personal use in connection with a project being planned for you by Poyant Signs, Inc. It is not to be shown to anyone outside your organization, nor is it to be reproduced, copied or exhibited in any fashion until transferred.

Revisions:



This sign is intended to be installed in accordance with the requirements of Article 600 of the National Electrical Code and / or other applicable local codes. This includes proper grounding and bonding of the sign.



All Signage Shown is Covered by Poyant's Exclusive DD Franchisee 3 Year Brand Identity Warranty Program

Approved By:

Bill Gavigan

Date:

Replacement Faces

Option A

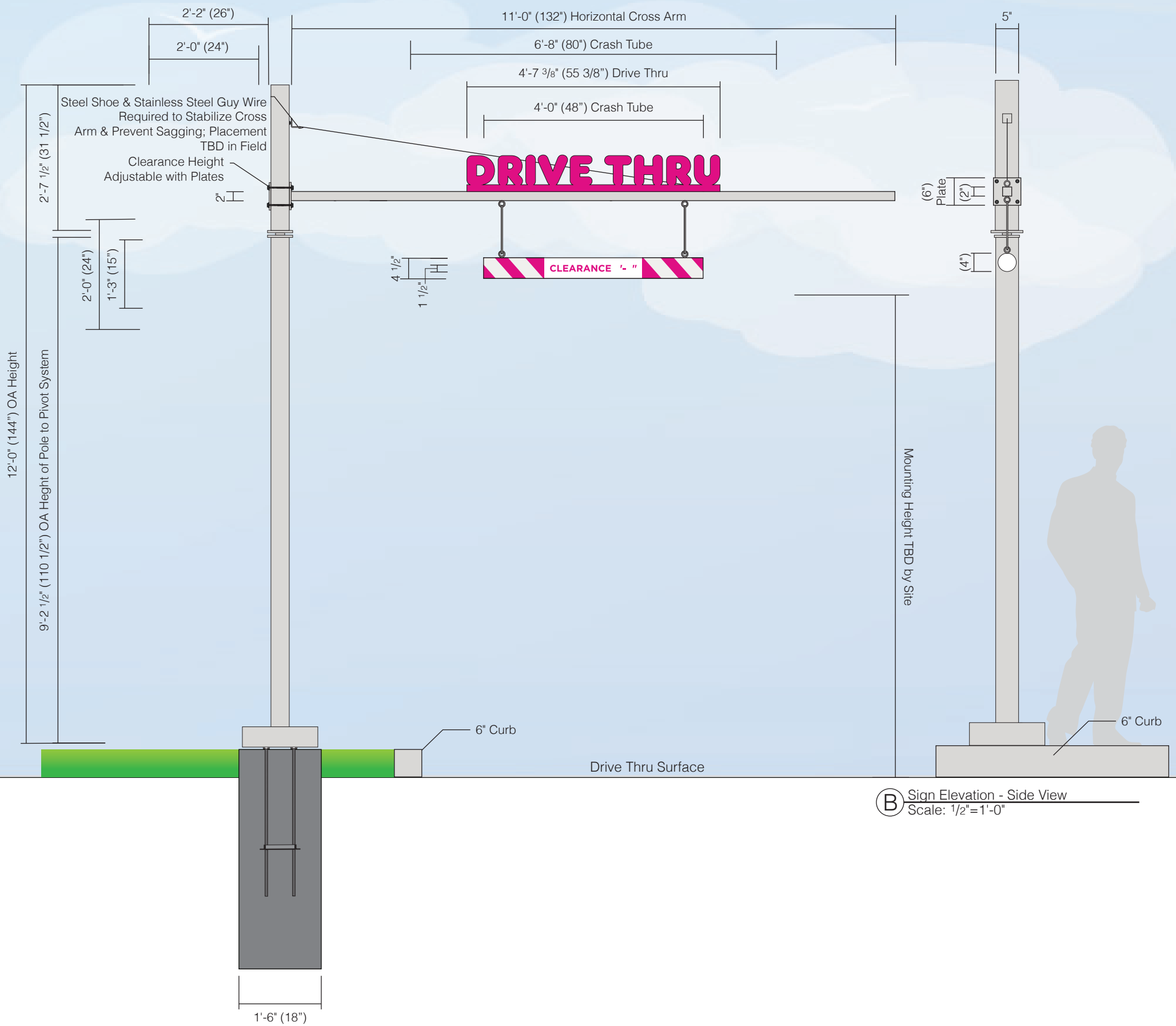


C Photo Comp - Existing
Not to Scale



D Photo Comp - Proposed
Not to Scale

See Page 2A.1



A Sign Elevation - Front View
Scale: 1/2"=1'-0"

B Sign Elevation - Side View
Scale: 1/2"=1'-0"

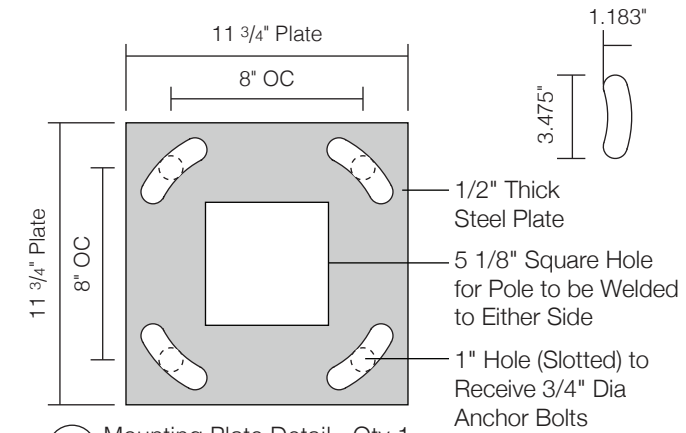
Specifications

- Qty = 1
- Single Lane Swing Tube Height Detector
- Horizontal bar (arm) to be square steel tube; capped at one end; welded to steel plate at other end; painted Nebulous White
 - "Drive Thru" to be flat cut out and mechanically fastened to horizontal bar; painted orange
 - Crash tubes to be 4" dia tube wrapped with white reflective vinyl digital print; cap ends with shipping tube ends
 - Crash tubes to attach to horizontal bar (arm) with 1" eyebolts and aircraft cable (cable length will vary per location)
 - DD Circle to be routed with 3" return on right side to mechanically fasten to vertical pole; painted Nebulous White with reflective digital print applied
 - Vertical support to be 4" x 4" x 1/4" square steel tube; painted Nebulous White
 - Height Detector manufactured with Swing Away feature if struck by vehicle; gravity will return canopy to aligned position
 - Horizontal arm to be adjustable
 - Stainless steel guy wire required to stabilize cross arm and prevent sagging
 - Plate Cover to be brake formed and painted to match Nebulous White
 - Vertical support welded to 11 3/4" x 11 3/4" x 1/2" thick steel mounting plate; painted Nebulous White
 - Mounting plate to attach to (Qty:4) 3/4" dia. anchor bolts (36" long with 32" embedment)
 - Foundation to be 4'-0" deep x 1'-6" wide x 1'-6" windload

*Clearance to be confirmed per site

Colors & Materials

- Paint
- █ to Match PMS 219C; Gloss Finish
 - █ to Match Nebulous White, SW 7063
- Graphics
- █ To Match PMS 165C, Reflective
 - █ To Match PMS 219C, Reflective
 - White, Reflective



C Mounting Plate Detail - Qty 1
Scale: 1 1/2"=1'-0"



125 Samuel Barnet Boulevard
New Bedford, MA 02745
800.544.0961 | poyantsigns.com



120 Main Street
Sturbridge, MA 01566

Project: 20040
Dunkin'

Sales: Bill Gavigan Jr.
Date: 8.11.21
Designer: RMA

Note:
This is an original unpublished drawing created by Poyant Signs, Inc. It is submitted for your personal use in connection with a project being planned for you by Poyant Signs, Inc. It is not to be shown to anyone outside your organization, nor is it to be reproduced, copied or exhibited in any fashion until transferred.

Revisions:



This sign is intended to be installed in accordance with the requirements of Article 600 of the National Electrical Code and / or other applicable local codes. This includes proper grounding and bonding of the sign.



All Signage Shown is Covered by Poyant's Exclusive DD Franchisee 3 Year Brand Identity Warranty Program

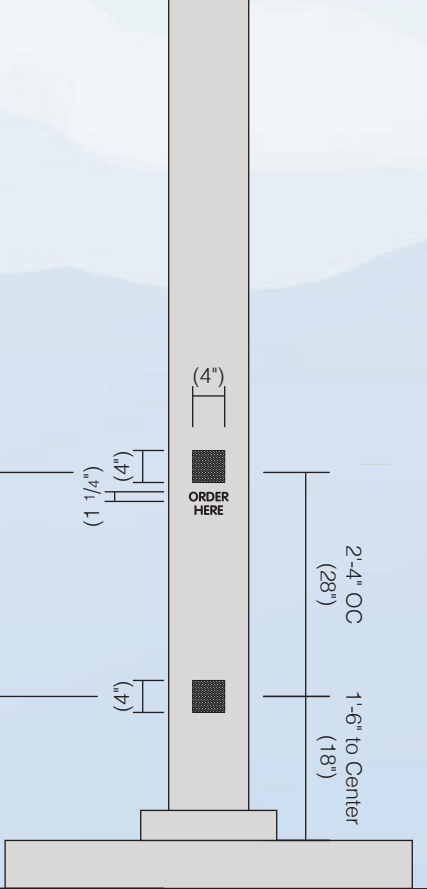
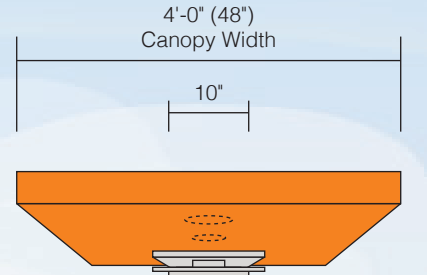
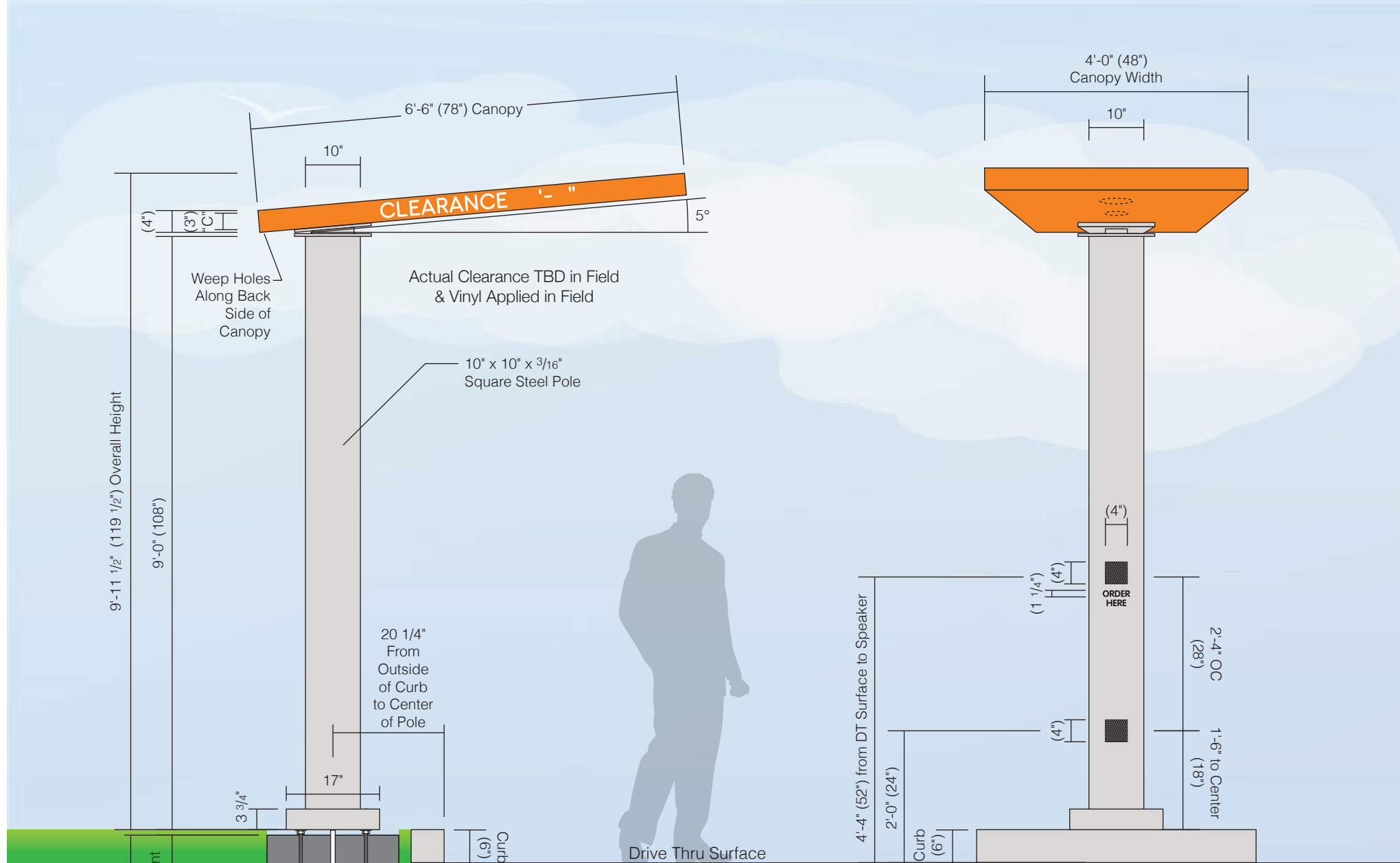
Approved By:

Bill Gavigan

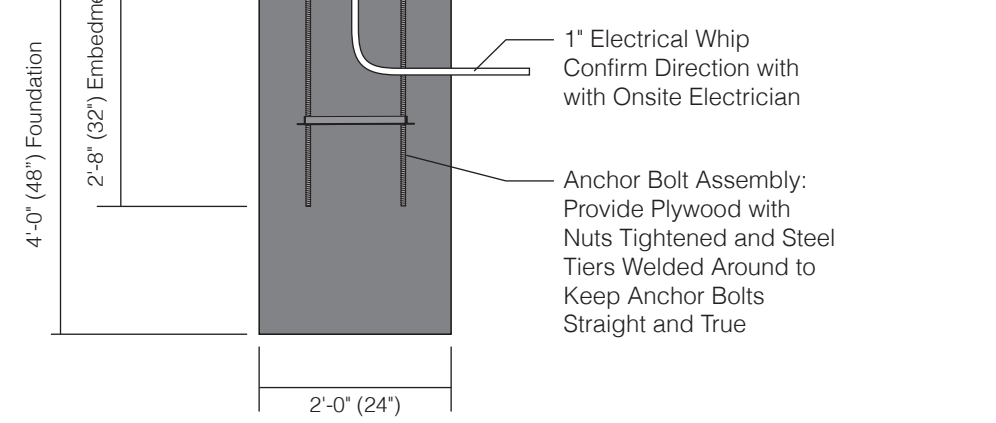
Date:

Single Lane Swing Tube HD

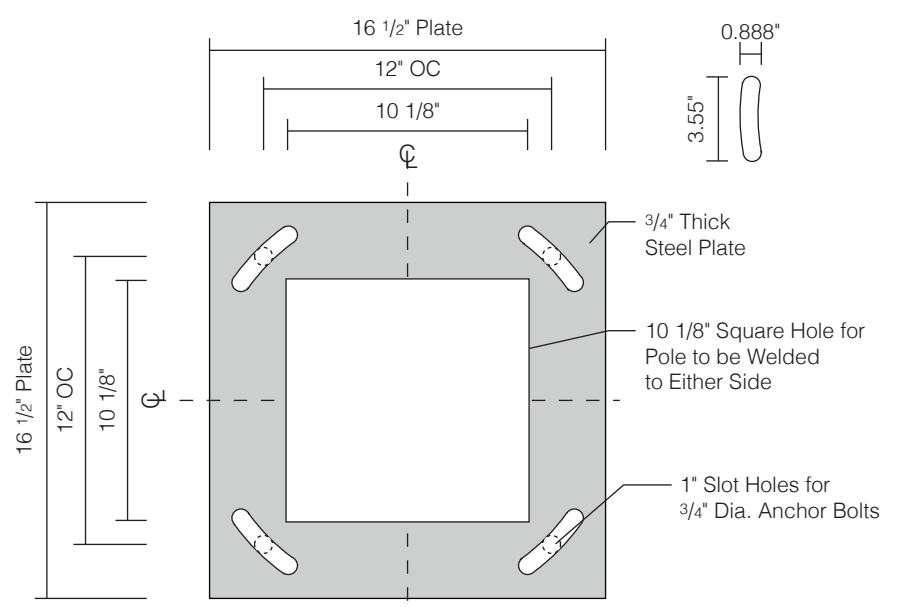
Option A



B Sign Elevation - Front View
Scale: 1/2"=1'-0"



A Sign Elevation - Side View (Approach)
Scale: 1/2"=1'-0"



C Mounting Plate Detail
Scale: 1 1/2"=1'-0"

Specifications

Qty = 1

Drive Thru Canopy

- 10" x 10" x 3/16" Square steel pole painted PMS Cool Gray 1C
- Custom fabricated aluminum canopy clad with .063 aluminum with (Qty:2) recessed down light fixtures; painted PMS 165C
- Canopy manufactured with swing away feature if struck by vehicle; gravity return will return canopy to aligned position
- "Clearance" to be white reflective vinyl applied first surface
- (Qty:2) 4" x 4" Square grilles installed in pole and painted to match pole for microphone/speaker assemblies
- (Qty:2) Custom fabricated shelves installed inside pole to house microphone/speaker assemblies
- Foam insulation installed on sides a back of pole around speaker & microphone
- Graphics on pole ("Order Here") to be black opaque vinyl
- Vertical pole to be welded to 16 1/2" x 16 1/2" x 3/4" thick steel mounting plate; painted PMS Cool Gray 1 *see detail C
- Plate cover to be brake formed .063 aluminum painted PMS Cool Gray 1C
- Mounting plate to attach to (Qty:4) 3/4" dia. anchor bolts (36" long with 32" embedment)
- Foundation to be 4'-0" deep x 2'-0" wide x 2'-0" windload

*120V TBD in field

*Clearance to be determined in field and appropriate numbers to be applied in field

Additional Notes:

- *Strongly recommended to secure permit before ordering canopy to confirm local codes are met
- *Some local ordinances may require signed & sealed engineering documentation to be provided

Colors & Materials

Paint

- to Match PMS 165C; Gloss Finish
- to Match PMS Cool Gray 1C; Gloss Finish

Graphics

- Black; Opaque
- White Reflective



125 Samuel Bernet Boulevard
New Bedford, MA 02745
800.544.0961 | poyantsigns.com



120 Main Street
Sturbridge, MA 01566

Project: 20040
Dunkin'

Sales: Bill Gavigan Jr.
Date: 8.11.21
Designer: RMA

Note:
This is an original unpublished drawing created by Poyant Signs, Inc. It is submitted for your personal use in connection with a project being planned for you by Poyant Signs, Inc. It is not to be shown to anyone outside your organization, nor is it to be reproduced, copied or exhibited in any fashion until transferred.

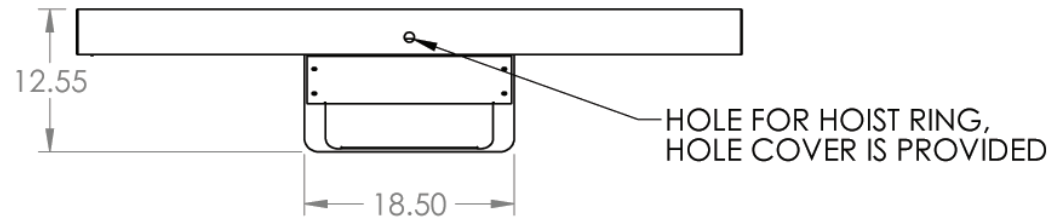
Revisions:

UL
This sign is intended to be installed in accordance with the requirements of Article 600 of the National Electrical Code and / or other applicable local codes. This includes proper grounding and bonding of the sign.

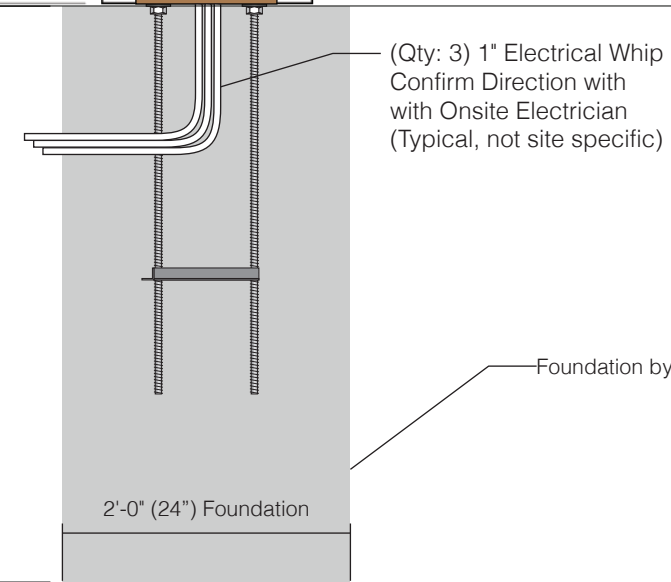
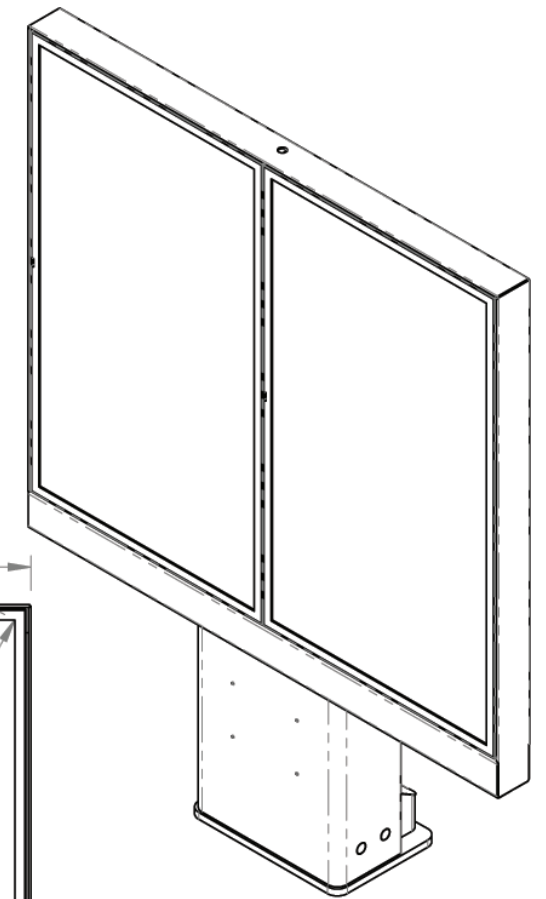
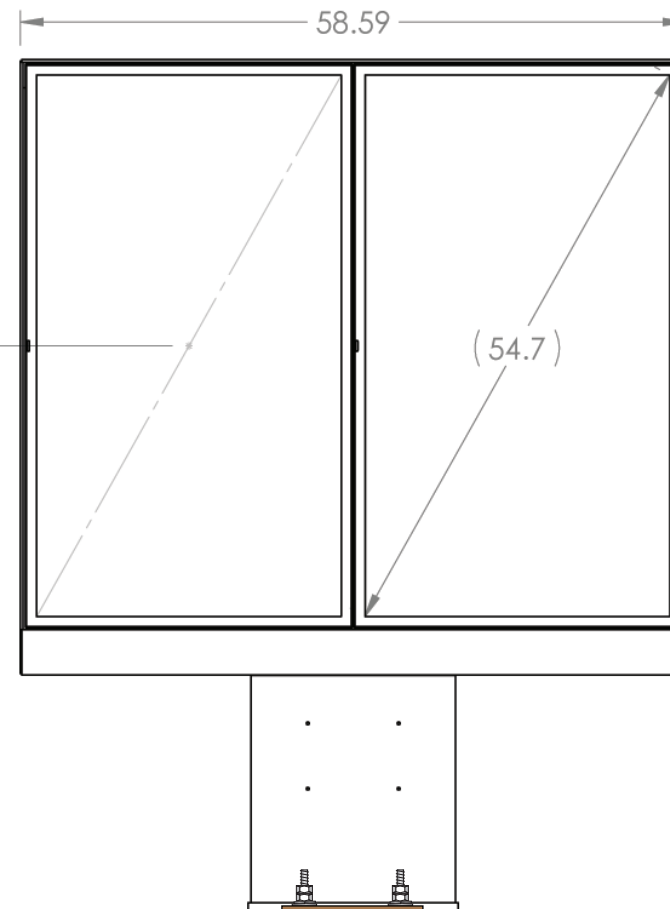
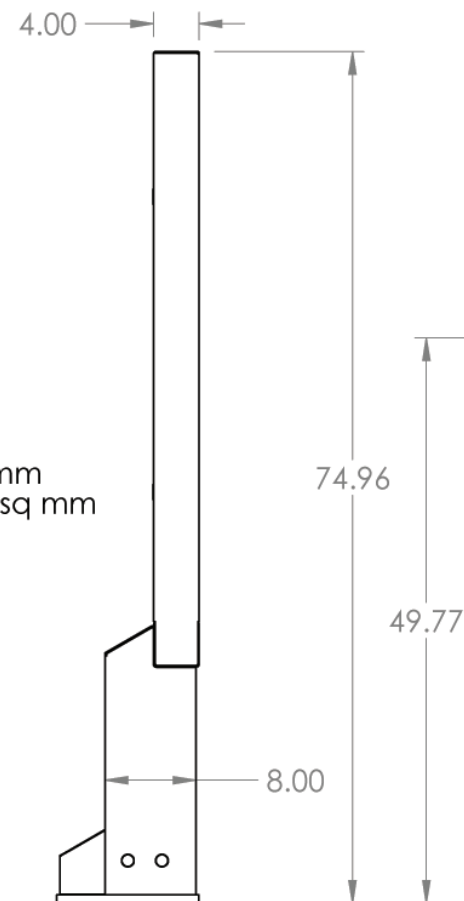
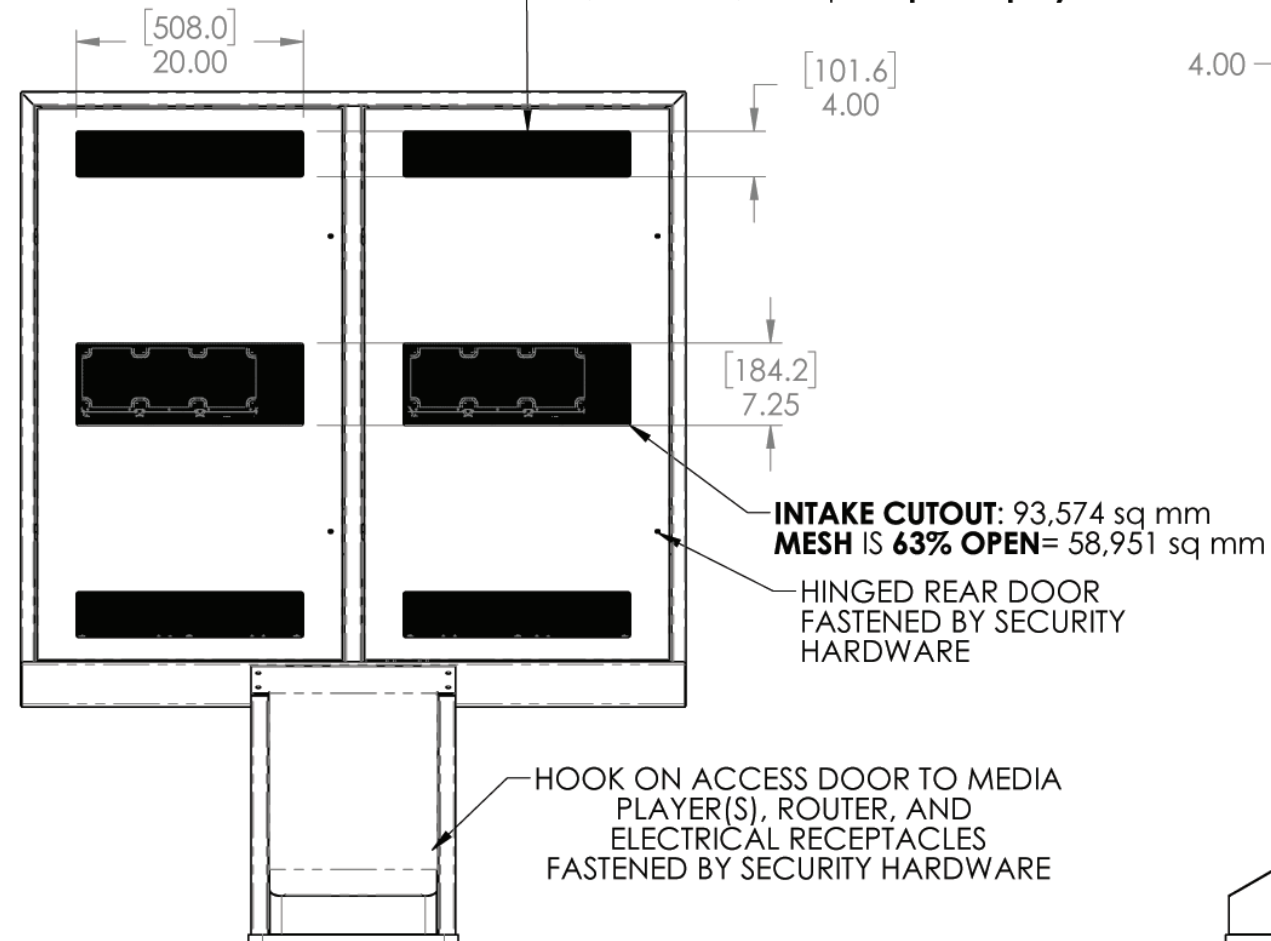
3 YEAR WARRANTY
All Signage Shown is Covered by Poyant's Exclusive DD Franchisee 3 Year Brand Identity Warranty Program

Approved By:
Bill Gavigan

Date:
Drive Thru Canopy
Option A



EXHAUST CUTOUT: 51,613 sq mm
MESH IS 63% OPEN= 32,516 sq mm
 32,516*2= 65,032 sq mm **per display**



OH55F 2X1 Menu Board by Others

4'-0" (48") Foundation

2'-0" (24") Foundation

4'-0" (48") Foundation

2'-0" (24") Foundation

Foundation by Others *Bill Javigan*