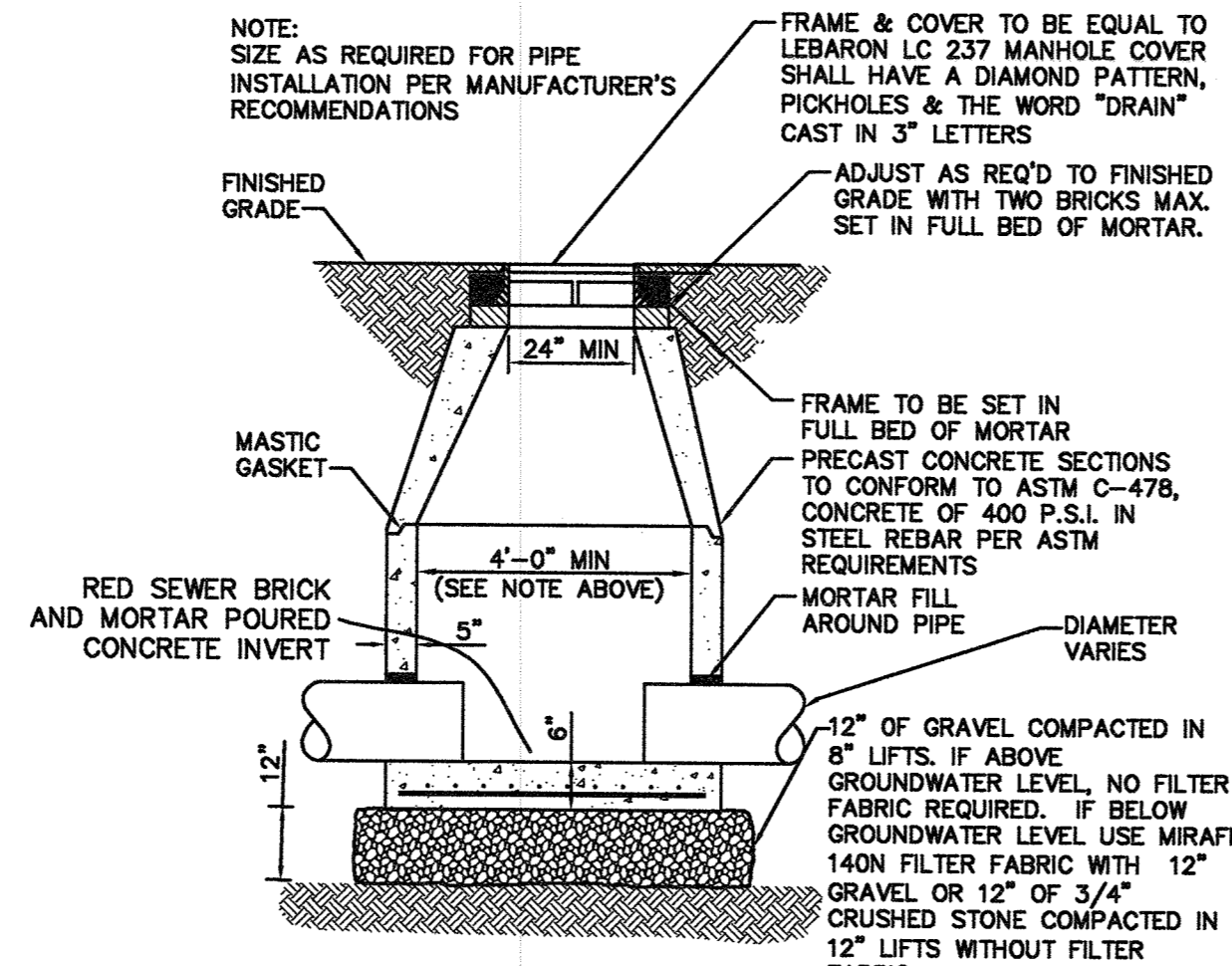


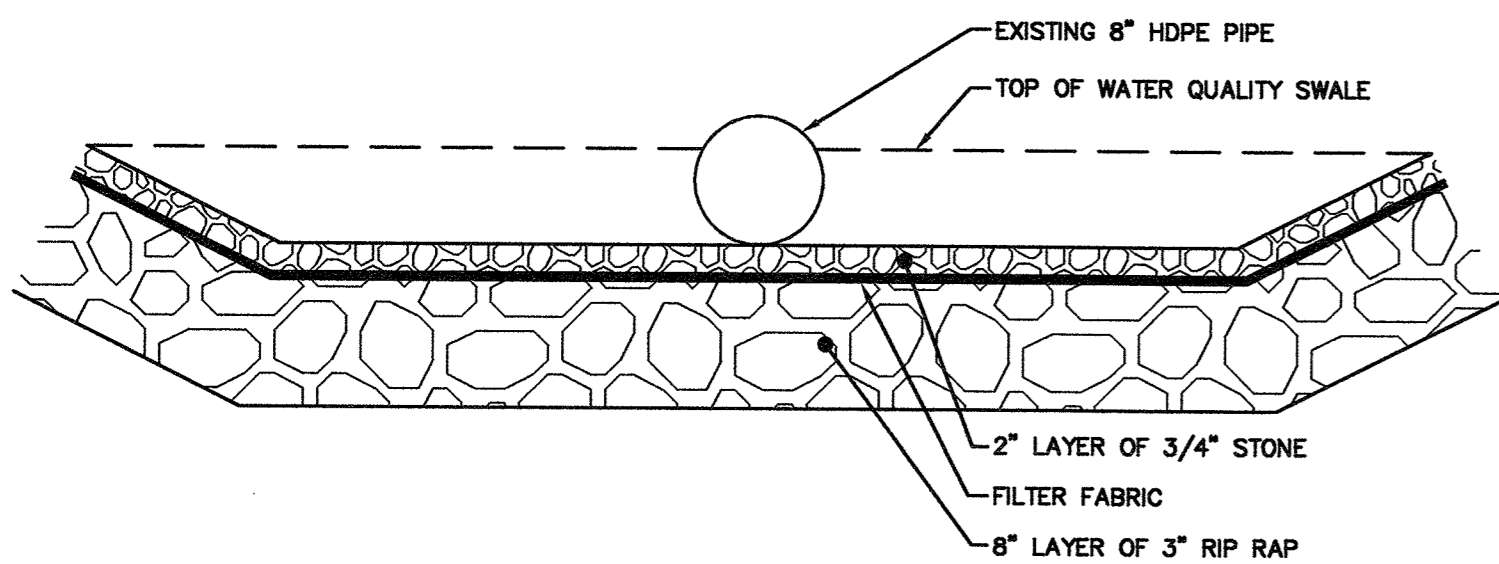
DEEP SUMP CATCH BASIN DETAIL

NOT TO SCALE



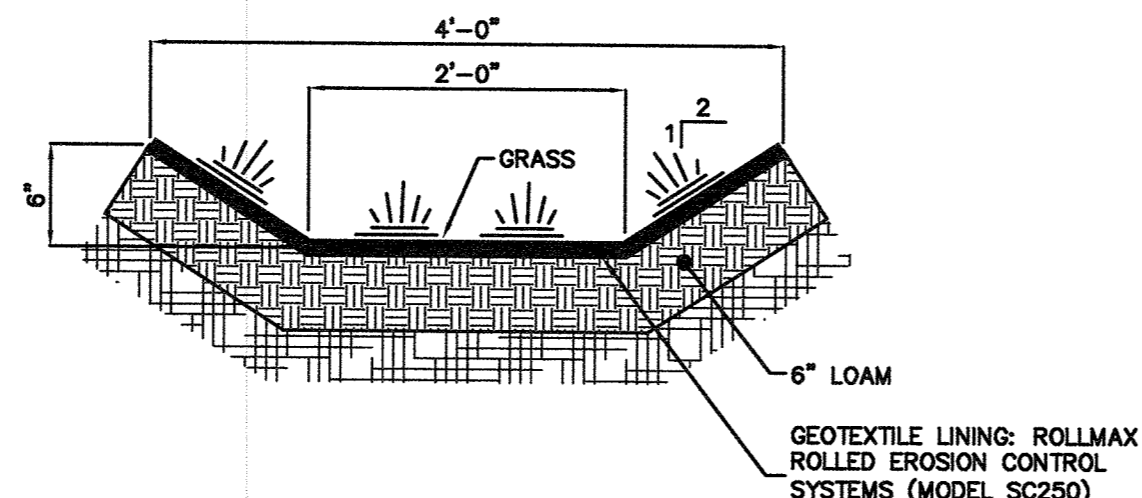
STANDARD DRAIN MANHOLE DETAIL

NOT TO SCALE



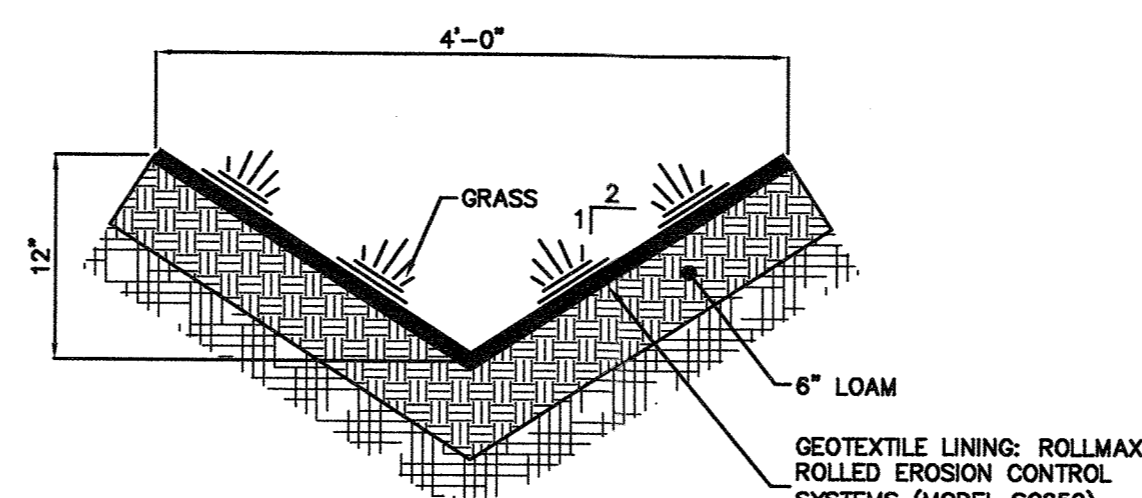
WATER QUALITY SWALE

NOT TO SCALE



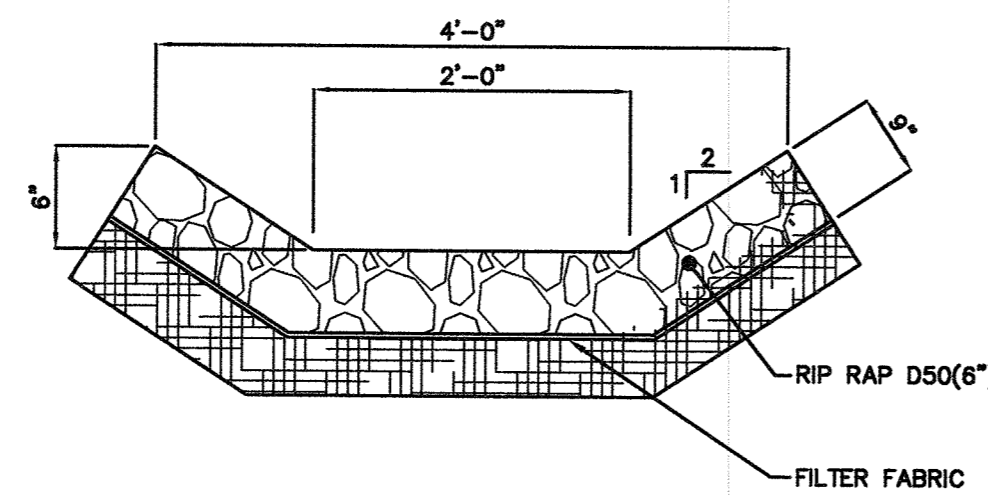
GRASS SWALE "GS1" (ALONG ROADWAY)

NOT TO SCALE



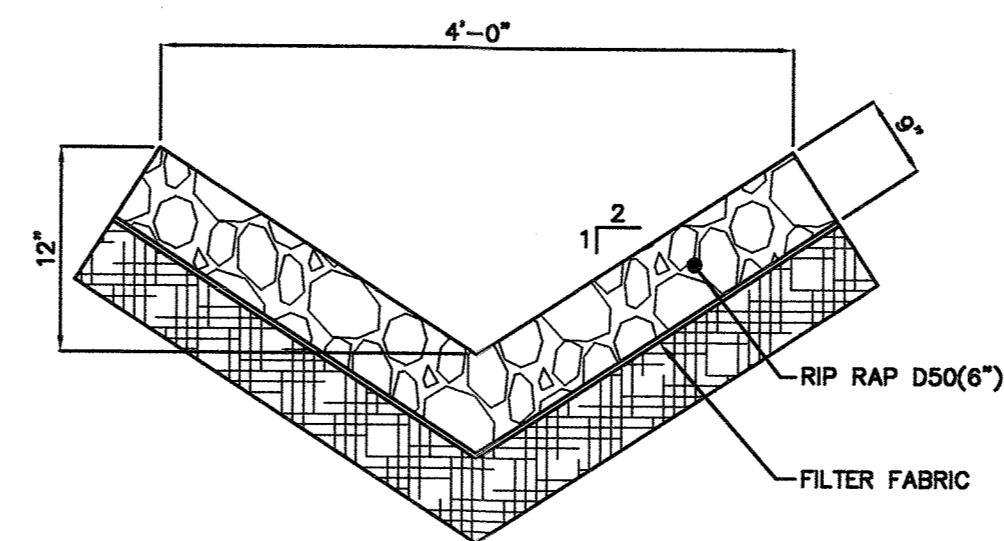
GRASS SWALE "GS2"

NOT TO SCALE



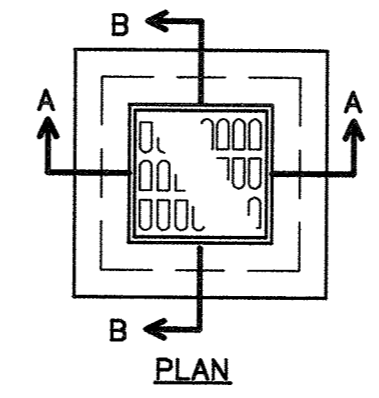
OPTIONAL GRANITE RIP RAP SWALE "O-GS1" (ALONG ROADWAY)

NOT TO SCALE



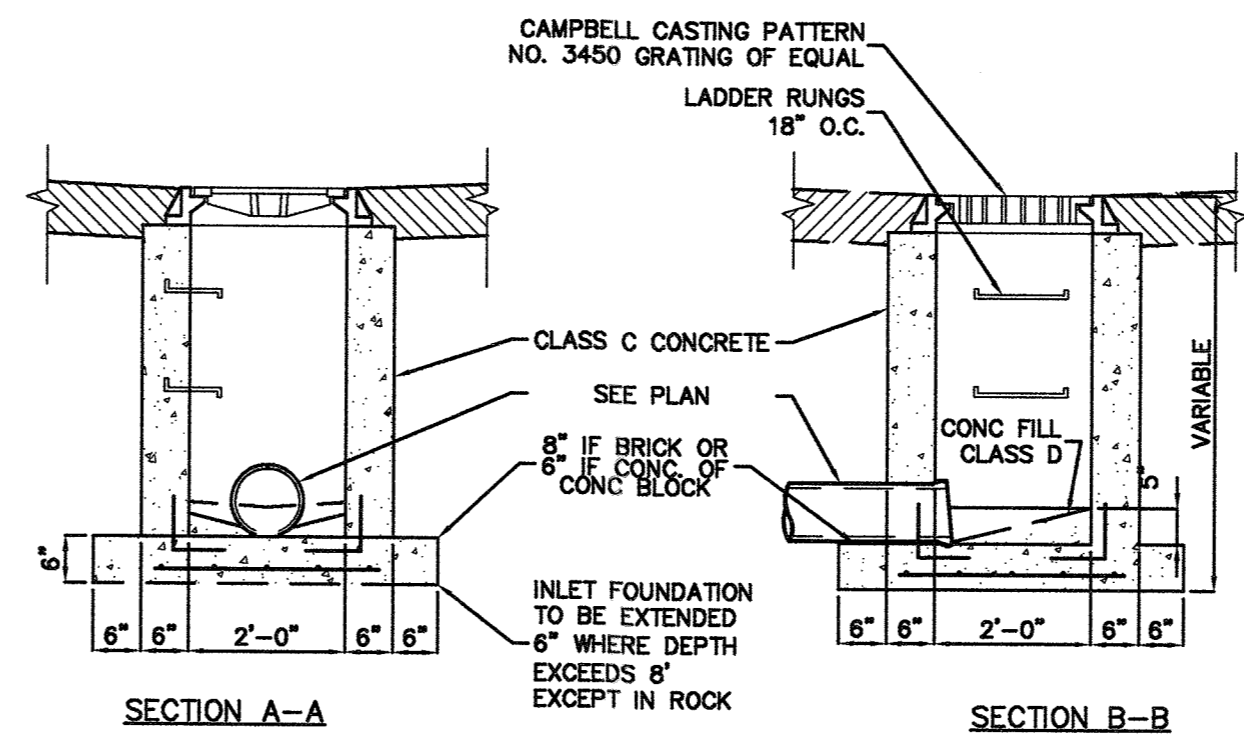
OPTIONAL GRANITE RIP RAP SWALE "O-GS2"

NOT TO SCALE



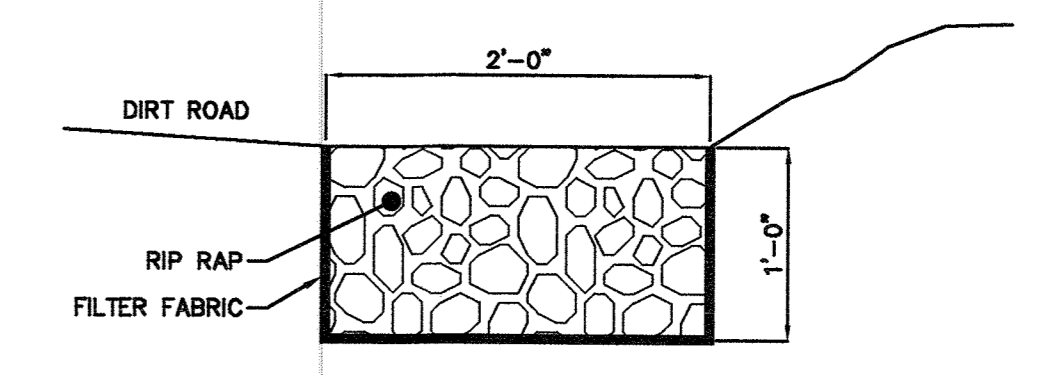
NOTES

1. CONSTRUCT INLET WITH CONCRETE BLOCK. BOTTOM SHALL BE AS SHOWN FOR CONCRETE AND THE OUTSIDE WALL SHALL BE PLASTERED WITH A 1/2" THICK COAT OF F2 CEMENT, SAND MORTAR.
2. ALTERNATE CONSTRUCTION OF INLET TO BE PRECAST REINFORCED 4,000 PSI CONCRETE.
3. THE INTERIOR WALL AND FLOOR OF ALL INLETS SHALL BE COATED WITH LIQUID ASPHALT.
4. SEE GRADING OR UTILITY PLAN FOR DEPTH OF INLETS, PIPE LOCATION AND PIPE SIZE.



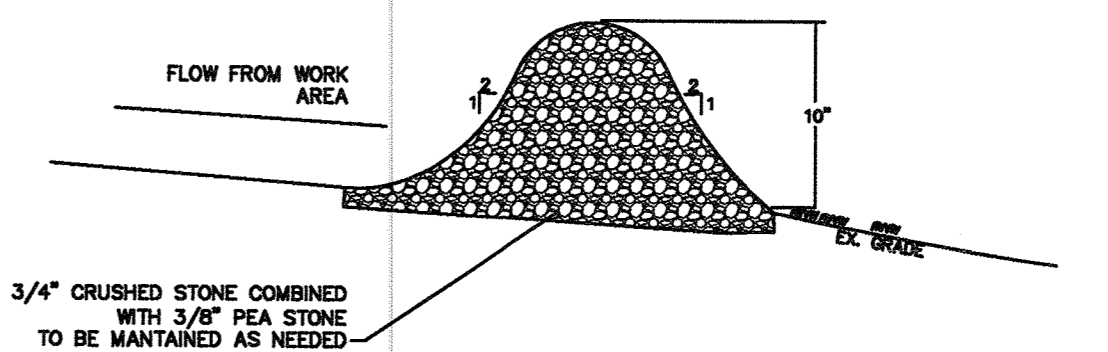
INLET (2'x2')

NOT TO SCALE



RIP RAP ALONG ROADWAY

NOT TO SCALE



STONE CHECK DAM DETAIL

NOT TO SCALE

20 ELM STREET
SOUTHBRIDGE, MA 01505
P 508.765.0195
F 508.765.0193
www.bertinengineering.com



CIVIL • SURVEYING • TRAFFIC • STRUCTURAL • ENVIRONMENTAL • MECHANICAL • LANDSCAPE

CALISTO J. BERTIN, P.E.
PROFESSIONAL ENGINEER
CT LIC. NO. 12985 • NJ LIC. NO. 28845
MA LIC. NO. 67695 • NY LIC. NO. 60022
NH LIC. NO. 8368 • RI LIC. NO. 6694

BRUCE A. FITZBACK, P.L.S.
PROFESSIONAL LAND SURVEYOR
MA LIC. NO. 57731
CT LIC. NO. 16970

NOT VALID UNLESS SEALED

NO.	DATE	REVISION

DRAWING TITLE
ROADWAY DRAINAGE & EROSION CONTROL DETAILS

PROJECT
ALUM LAKE SEDIMENT CONTROL
BIG ALUM LAKE ASSOC.
148 LAKE ROAD
STURBRIDGE, MA

CLIENT
THOMAS CLARK
148 LAKE ROAD
STURBRIDGE, MA 01518

CERTIFICATE OF AUTHORIZATION
24GA28068900 / 21MH00002800
DRAWN BY: J.A.S. CHECKED BY: C.J.B.
SCALE: 1" = 20' PROJECT NO.: 19M-186
DATE: 03-24-20 REVISION NO.: 0

DRAWING NO. **EC-2**