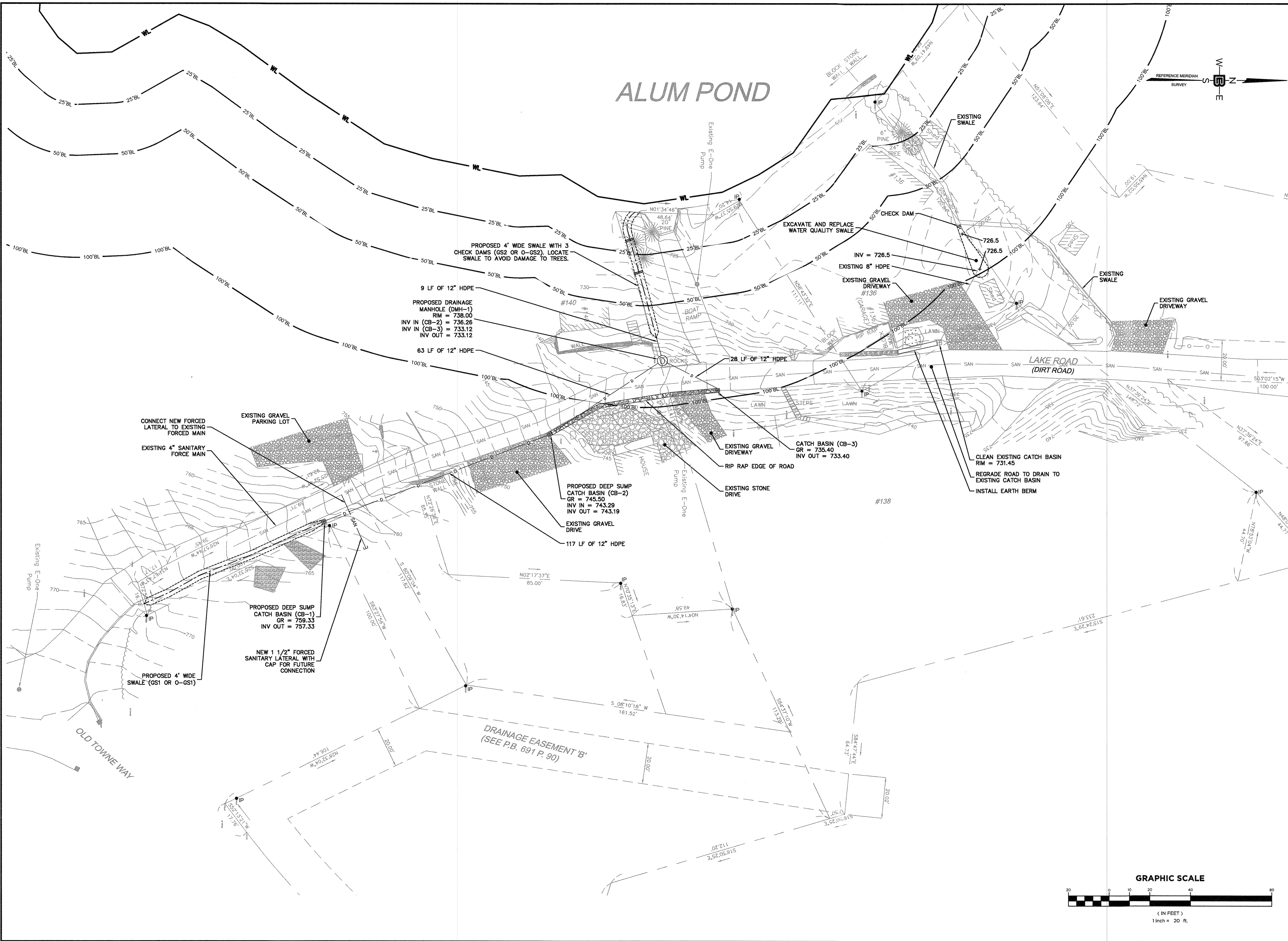


© Bertin Engineering Associates, Inc. 11/22/18 16:23:06 Job Files\2019\18M-186 Sturbridge, MA\Drawings\Civil\CADD\DWG 18M-186-PL.dwg Jul 28, 2020 - 1:45pm eakg



39 ELM STREET
SOUTHRIDGE, MA 01550
P 508.765.0195
F 508.765.0193
www.bertinengineering.com



CIVIL • SURVEYING • TRAFFIC • STRUCTURAL • ENVIRONMENTAL • MECHANICAL • LANDSCAPE

CALISTO J. BERTIN, P.E.
PROFESSIONAL ENGINEER
CT LIC. NO. 19850 NH LIC. NO. 28845
MA LIC. NO. 40895 ALIC. NO. 60022
NH LIC. NO. 5968 BE LIC. NO. 6694

BRUCE A. FITZBACK, P.L.S.
PROFESSIONAL LAND SURVEYOR
MA LIC. NO. 37731
CT LIC. NO. 16970

NO.	DATE	REVISION
1	7-21-20	REDUCE NUMBER OF DRAINAGE STRUCTURES

ROADWAY DRAINAGE & EROSION CONTROL PLAN

ALUM LAKE SEDIMENT CONTROL

BIG ALUM LAKE ASSOC.
148 LAKE ROAD
STURBRIDGE, MA

THOMAS CLARK
148 LAKE ROAD
STURBRIDGE, MA 01518

CERTIFICATE OF AUTHORIZATION
246A28068900 / 21MH00002800
DRAWN BY: J.A.S. CHECKED BY: C.J.B.
SCALE: 1" = 20' PROJECT NO: 18M-186
DATE: 03-24-20 REVISION NO: 1

EC-1

