

Noble

Noble Gas

Sturbridge, MA • Revision 9 • Job# 40395 • January 10, 2023



60 Westfield Drive
Plantsville, CT 06479
860.229.1812

Project Address:
 Noble Gas
 Charleton, RD - Route 20
 Sturbridge, MA

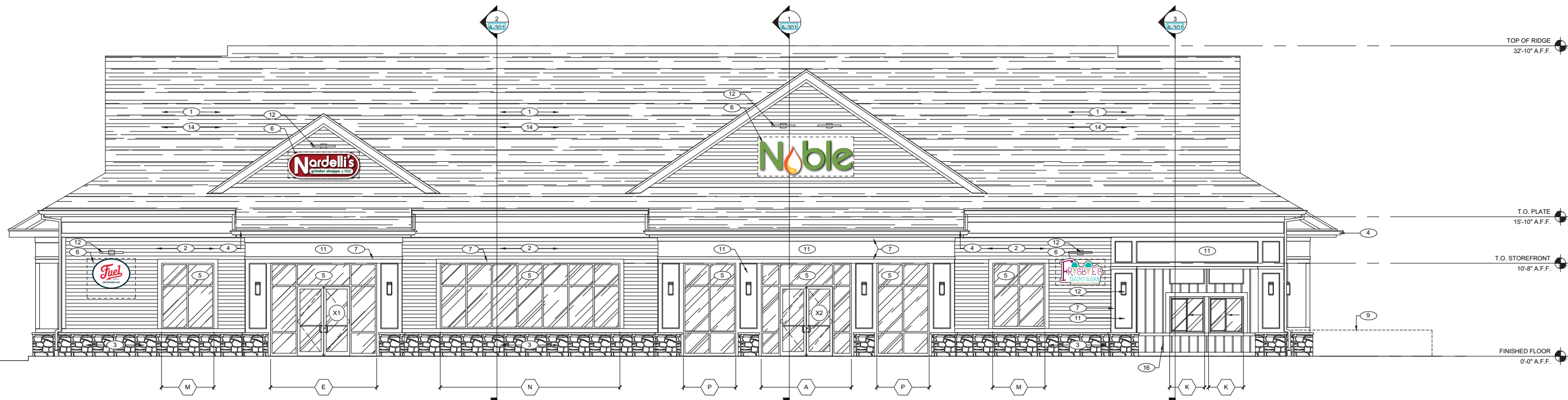
SPI WO #: e40395
 Issue Date: 11/4/222

Salesperson: Pete Rappoccio
 Designer: G.D

DRAWINGS ARE NOT TO SCALE
 UNLESS OTHERWISE NOTED

Revisions:

- B.A. - 11/11/22 - REV 1
- B.A. - 11/14/22 - REV 2
- B.A. - 11/17/22 - REV 3
- B.A. - 12/7/22 - REV 4
- B.A. - 12/16/22 - REV 5
- B.A. - 12/19/22 - REV 6
- B.A. - 12/22/22 - REV 7
- B.A. - 12/28/22 - REV 8
- B.A. - 1/10/23 - REV 9



Customer Approval: APPROVED APPROVED AS NOTED REVISE & RESUBMIT

SIGN PRO
 signpro-usa.com

60 Westfield Drive
 Plantsville, CT 06479
 860.229.1812

SIGN TYPE
Elevation
 PAGE
 2 of 9

PRINT SIGN DATE
 © COPYRIGHT 2014, BY SIGN PRO INC. ALL DESIGNS PRESENTED ARE THE SOLE PROPERTY OF SIGN PRO INC. AND MAY NOT BE REPRODUCED IN PART OR WHOLE WITHOUT WRITTEN PERMISSION FROM SIGN PRO INC.



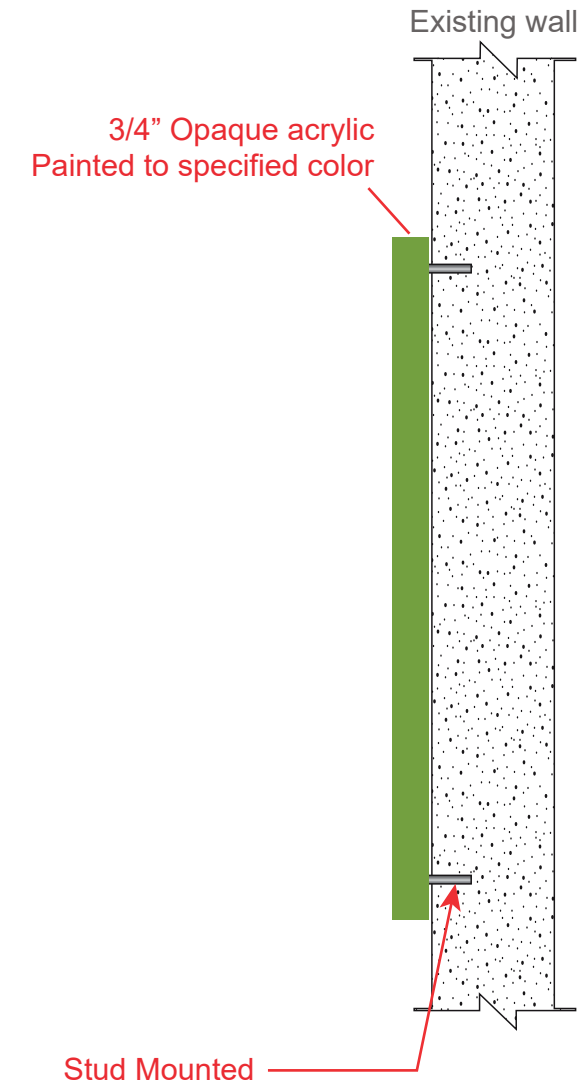
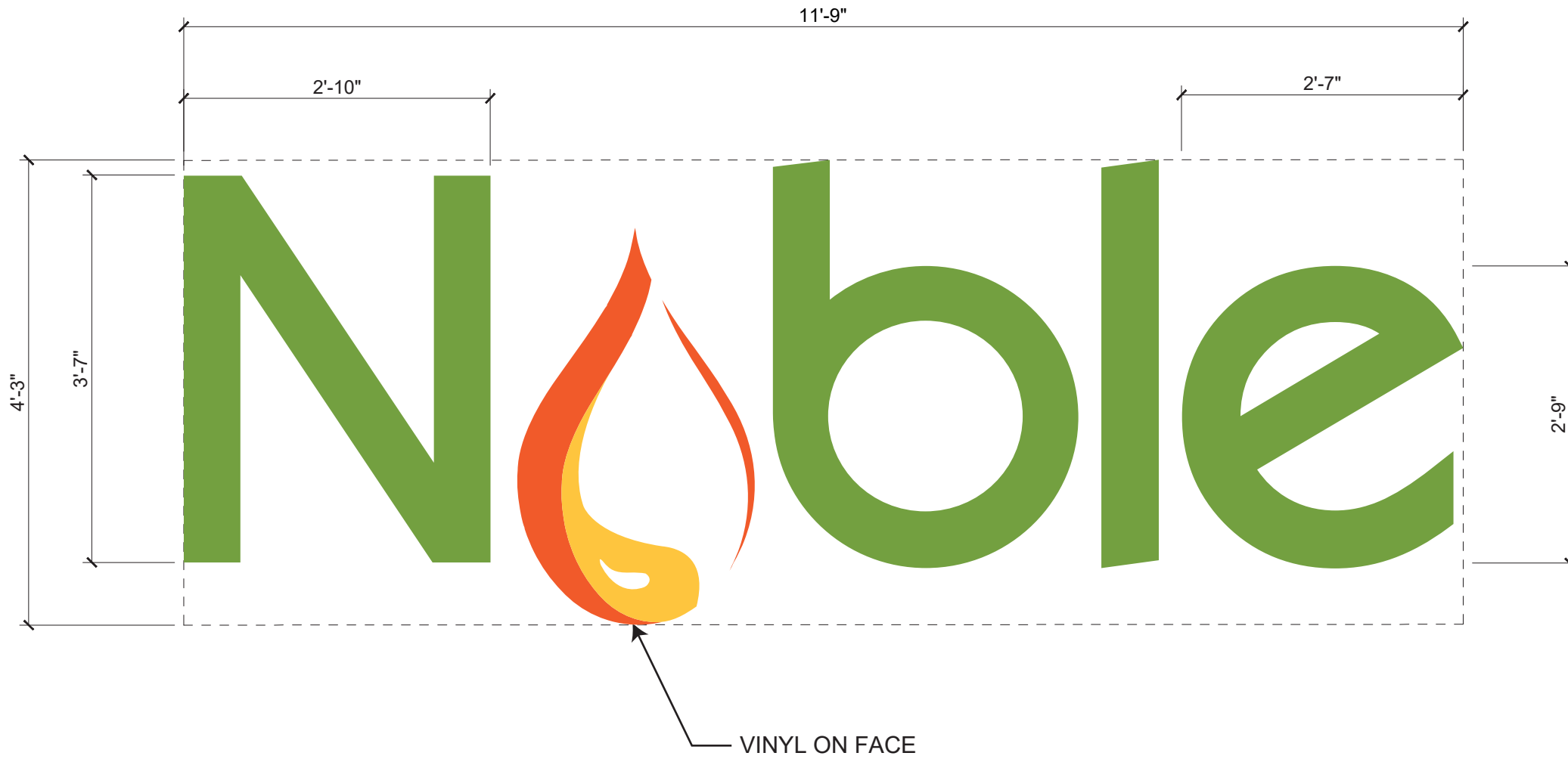
Project Address:
 Noble Gas
 Charleton, RD - Route 20
 Sturbridge, MA

SPI WO #: e40395
 Issue Date: 11/4/222

Salesperson: Pete Rappoccio
 Designer: G.D

DRAWINGS ARE NOT TO SCALE
 UNLESS OTHERWISE NOTED

- Revisions:
- B.A. - 11/11/22 - REV 1
 - B.A. - 11/14/22 - REV 2
 - B.A. - 11/17/22 - REV 3
 - B.A. - 12/7/22 - REV 4
 - B.A. - 12/16/22 - REV 5
 - B.A. - 12/19/22 - REV 6
 - B.A. - 12/22/22 - REV 7
 - B.A. - 12/28/22 - REV 8
 - B.A. - 1/10/23 - REV 9



- Dark Green 7728
- Green 369
- Orange 1655
- Yellow 123
- White

Customer Approval: APPROVED APPROVED AS NOTED REVISE & RESUBMIT

PRINT

SIGN

DATE

© COPYRIGHT 2014, BY SIGN PRO INC. ALL DESIGNS PRESENTED ARE THE SOLE PROPERTY OF SIGN PRO INC. AND MAY NOT BE REPRODUCED IN PART OR WHOLE WITHOUT WRITTEN PERMISSION FROM SIGN PRO INC.

 **SIGN PRO**
 signpro-usa.com

60 Westfield Drive
 Plantsville, CT 06479
 860.229.1812



SIGN TYPE

Elevation

PAGE

3 of 9

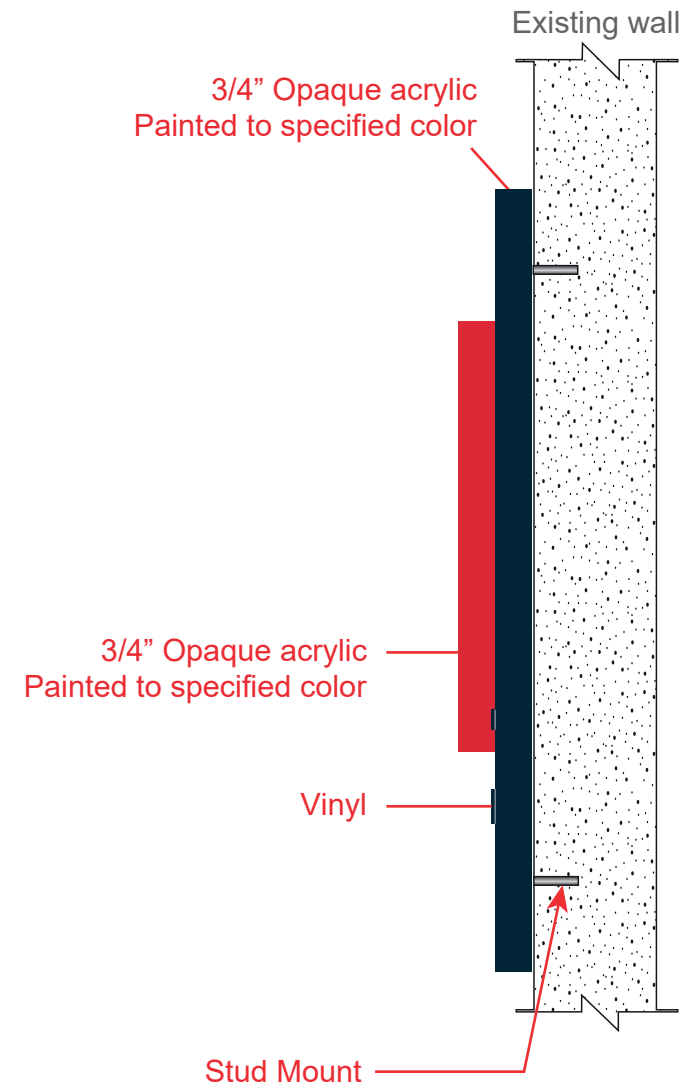
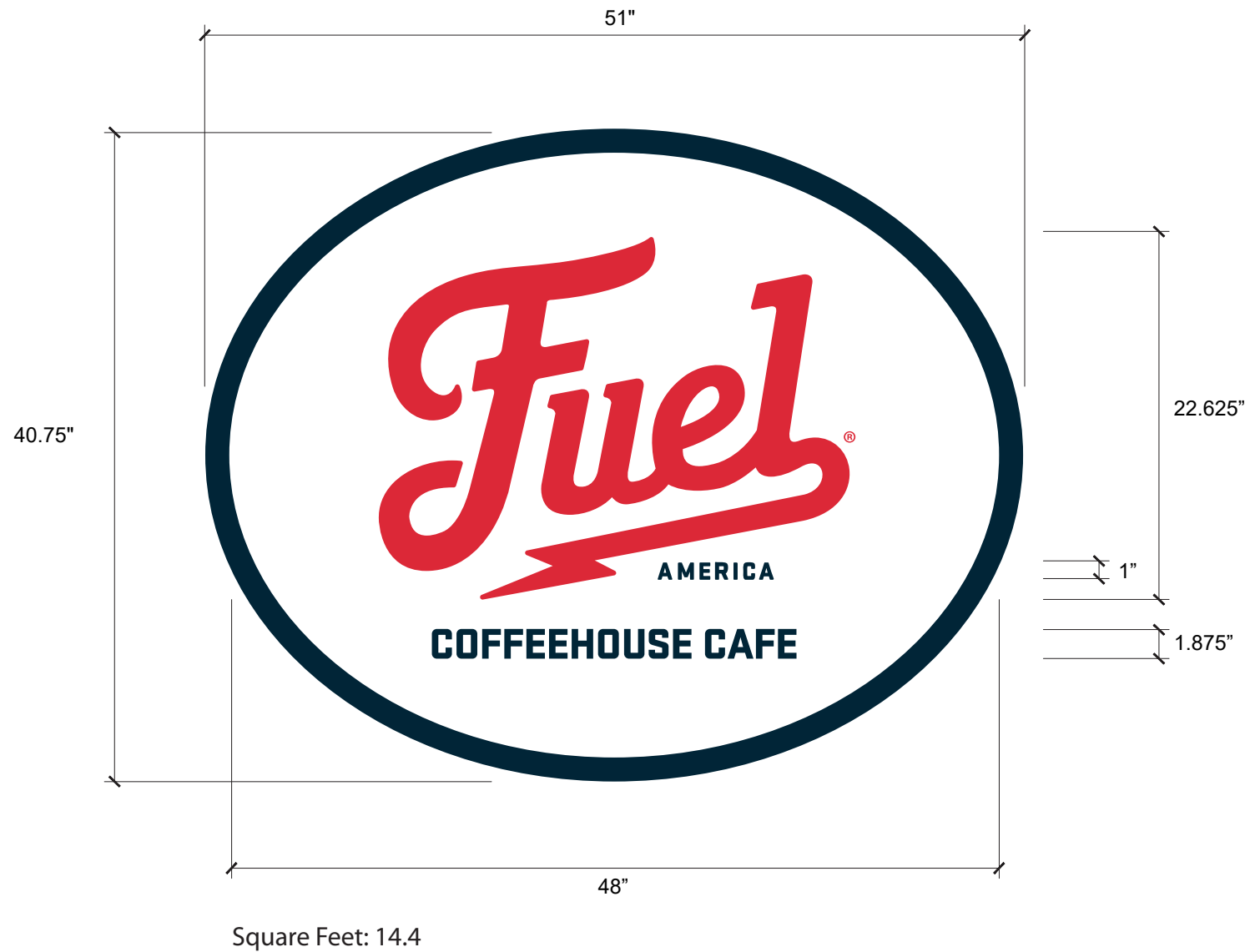
Project Address:
 Noble Gas
 Charleton, RD - Route 20
 Sturbridge, MA

SPI WO #: e40395
 Issue Date: 11/4/222

Salesperson: Pete Rappoccio
 Designer: G.D

DRAWINGS ARE NOT TO SCALE
 UNLESS OTHERWISE NOTED

- Revisions:
- B.A. - 11/11/22 - REV 1
 - B.A. - 11/14/22 - REV 2
 - B.A. - 11/17/22 - REV 3
 - B.A. - 12/7/22 - REV 4
 - B.A. - 12/16/22 - REV 5
 - B.A. - 12/19/22 - REV 6
 - B.A. - 12/22/22 - REV 7
 - B.A. - 12/28/22 - REV 8
 - B.A. - 1/10/23 - REV 9



- PMS 303
- PMS 1797
- White

Customer Approval: APPROVED APPROVED AS NOTED REVISE & RESUBMIT

SIGN PRO
 signpro-usa.com

60 Westfield Drive
 Plantsville, CT 06479
 860.229.1812

SIGN TYPE
Elevation
 PAGE
 4 of 9



Project Address:
 Noble Gas
 Charleton, RD - Route 20
 Sturbridge, MA

SPI WO #: e40395
 Issue Date: 11/4/222

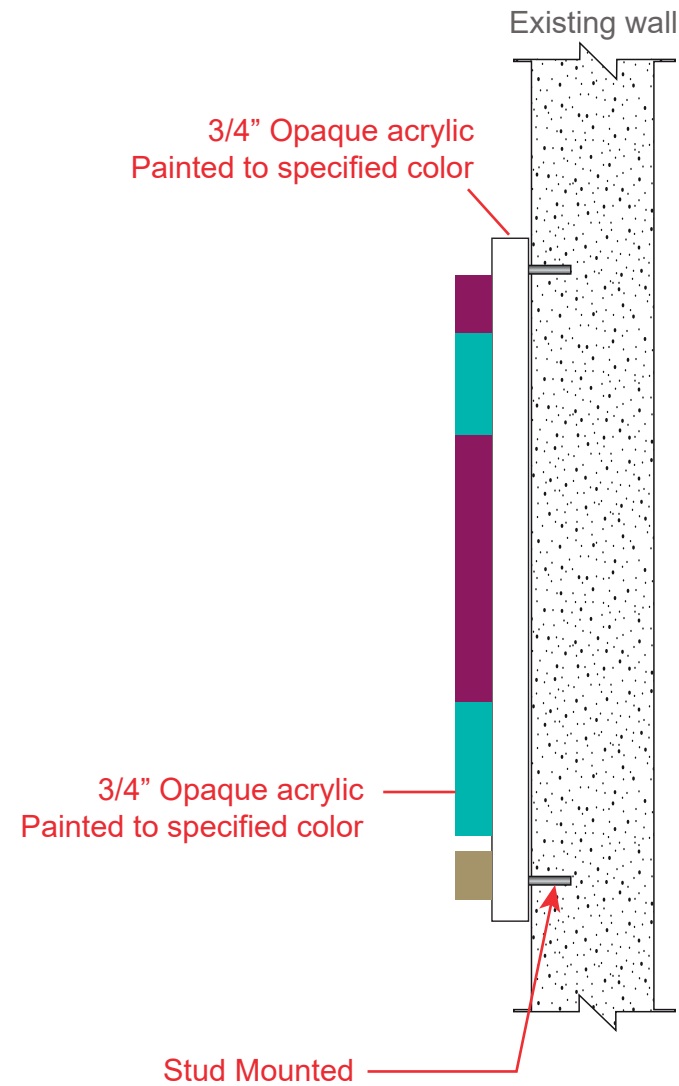
Salesperson: Pete Rappoccio
 Designer: G.D

DRAWINGS ARE NOT TO SCALE
 UNLESS OTHERWISE NOTED

- Revisions:
- B.A. - 11/11/22 - REV 1
 - B.A. - 11/14/22 - REV 2
 - B.A. - 11/17/22 - REV 3
 - B.A. - 12/7/22 - REV 4
 - B.A. - 12/16/22 - REV 5
 - B.A. - 12/19/22 - REV 6
 - B.A. - 12/22/22 - REV 7
 - B.A. - 12/28/22 - REV 8
 - B.A. - 1/10/23 - REV 9



Square Feet: 14.4



- PMS 228
- PMS 3265
- PMS 7503
- White

Customer Approval: APPROVED APPROVED AS NOTED REVISE & RESUBMIT

SIGN PRO
 signpro-usa.com

60 Westfield Drive
 Plantsville, CT 06479
 860.229.1812

SIGN TYPE
Elevation
 PAGE
 5 of 9



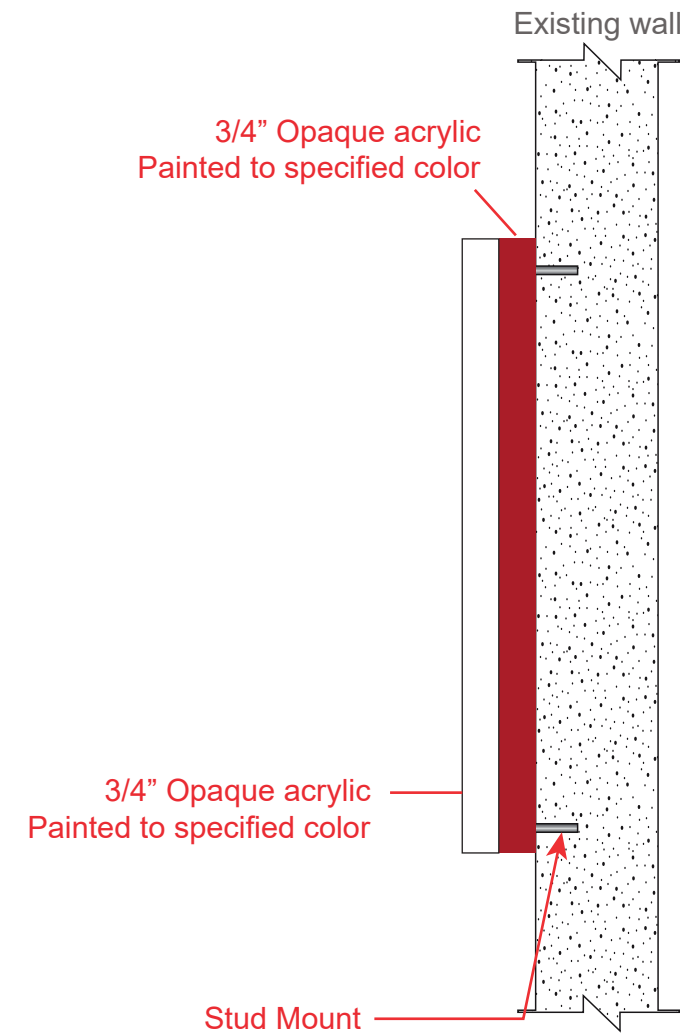
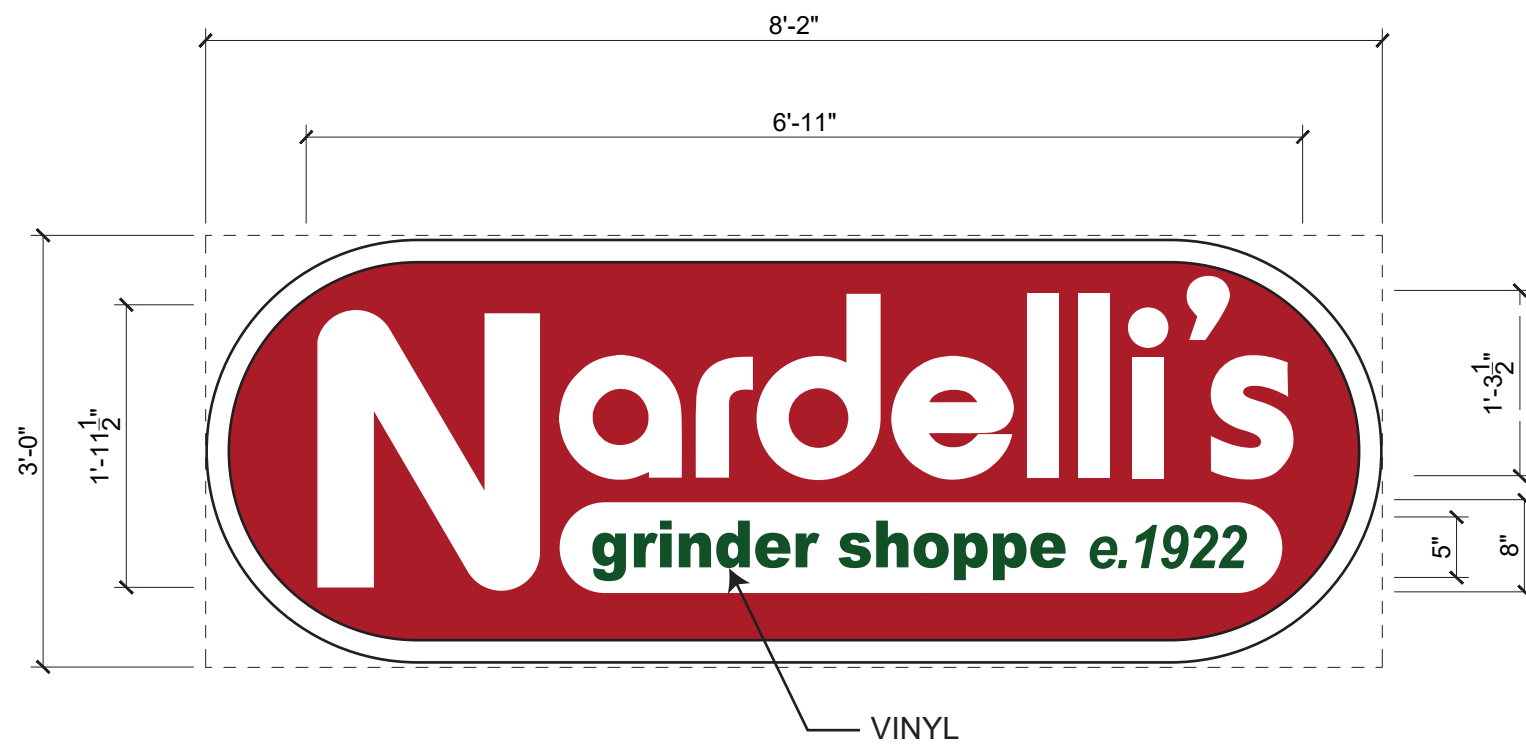
Project Address:
 Noble Gas
 Charleton, RD - Route 20
 Sturbridge, MA

SPI WO #: e40395
 Issue Date: 11/4/222

Salesperson: Pete Rappoccio
 Designer: G.D

DRAWINGS ARE NOT TO SCALE
 UNLESS OTHERWISE NOTED

- Revisions:
- B.A. - 11/11/22 - REV 1
 - B.A. - 11/14/22 - REV 2
 - B.A. - 11/17/22 - REV 3
 - B.A. - 12/7/22 - REV 4
 - B.A. - 12/16/22 - REV 5
 - B.A. - 12/19/22 - REV 6
 - B.A. - 12/22/22 - REV 7
 - B.A. - 12/28/22 - REV 8
 - B.A. - 1/10/23 - REV 9



- PMS -----
- PMS -----
- White

Customer Approval: APPROVED APPROVED AS NOTED REVISE & RESUBMIT

PRINT

SIGN

DATE

© COPYRIGHT 2014, BY SIGN PRO INC. ALL DESIGNS PRESENTED ARE THE SOLE PROPERTY OF SIGN PRO INC. AND MAY NOT BE REPRODUCED IN PART OR WHOLE WITHOUT WRITTEN PERMISSION FROM SIGN PRO INC.

 **SIGN PRO**
 signpro-usa.com

60 Westfield Drive
 Plantsville, CT 06479
 860.229.1812



SIGN TYPE

Elevation

PAGE

6 of 9

Project Address:
 Noble Gas
 Charleton, RD - Route 20
 Sturbridge, MA

SPI WO #: e40395
 Issue Date: 11/4/222

Salesperson: Pete Rappoccio
 Designer: G.D

DRAWINGS ARE NOT TO SCALE
 UNLESS OTHERWISE NOTED

Revisions:

- B.A. - 11/11/22 - REV 1
- B.A. - 11/14/22 - REV 2
- B.A. - 11/17/22 - REV 3
- B.A. - 12/7/22 - REV 4
- B.A. - 12/16/22 - REV 5
- B.A. - 12/19/22 - REV 6
- B.A. - 12/22/22 - REV 7
- B.A. - 12/28/22 - REV 8
- B.A. - 1/10/23 - REV 9



Customer Approval: APPROVED APPROVED AS NOTED REVISE & RESUBMIT

PRINT	SIGN	DATE

© COPYRIGHT 2014, BY SIGN PRO INC. ALL DESIGNS PRESENTED ARE THE SOLE PROPERTY OF SIGN PRO INC. AND MAY NOT BE REPRODUCED IN PART OR WHOLE WITHOUT WRITTEN PERMISSION FROM SIGN PRO INC.

60 Westfield Drive
 Plantsville, CT 06479
 signpro-usa.com 860.229.1812



SIGN TYPE
Pylon
 PAGE
 7 of 9

Project Address:
Noble Gas
Charlton, RD - Route 20
Sturbridge, MA

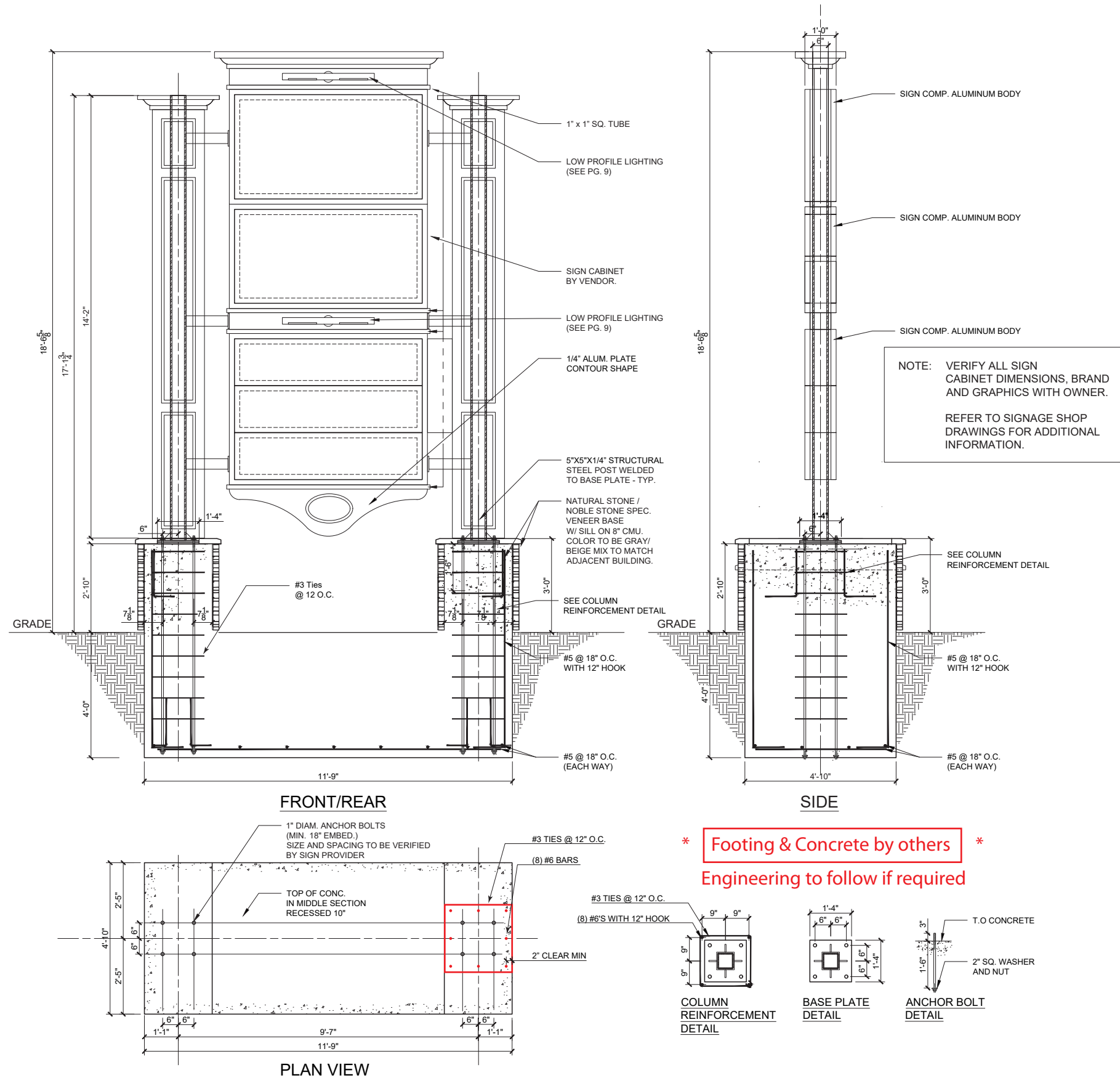
SPI WO #: e40395
Issue Date: 11/4/222

Salesperson: Pete Rappoccio
Designer: G.D

**DRAWINGS ARE NOT TO SCALE
UNLESS OTHERWISE NOTED**

Revisions:

- B.A. - 11/11/22 - REV 1
- B.A. - 11/14/22 - REV 2
- B.A. - 11/17/22 - REV 3
- B.A. - 12/7/22 - REV 4
- B.A. - 12/16/22 - REV 5
- B.A. - 12/19/22 - REV 6
- B.A. - 12/22/22 - REV 7
- B.A. - 12/28/22 - REV 8
- B.A. - 1/10/23 - REV 9



Customer Approval: APPROVED APPROVED AS NOTED REVISE & RESUBMIT

Project Address:
 Noble Gas
 Charleton, RD - Route 20
 Sturbridge, MA

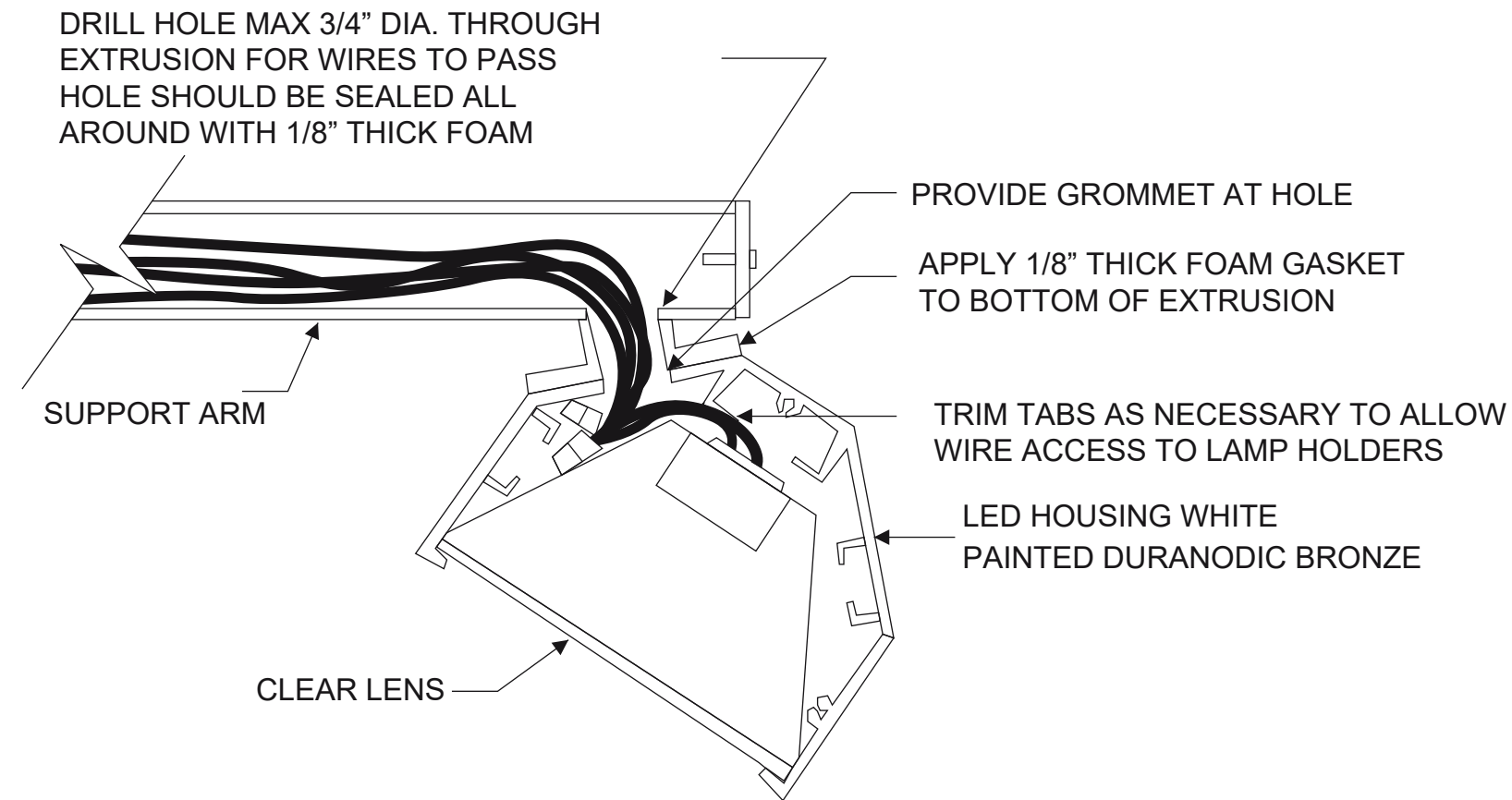
SPI WO #: e40395
 Issue Date: 11/4/222

Salesperson: Pete Rappoccio
 Designer: G.D

DRAWINGS ARE NOT TO SCALE
 UNLESS OTHERWISE NOTED

Revisions:
 B.A. - 11/11/22 - REV 1
 B.A. - 11/14/22 - REV 2
 B.A. - 11/17/22 - REV 3
 B.A. - 12/7/22 - REV 4
 B.A. - 12/16/22 - REV 5
 B.A. - 12/19/22 - REV 6
 B.A. - 12/22/22 - REV 7
 B.A. - 12/28/22 - REV 8
 B.A. - 1/10/23 - REV 9

LO-PRO LIGHTING



Customer Approval: APPROVED APPROVED AS NOTED REVISE & RESUBMIT

PRINT

SIGN

DATE

© COPYRIGHT 2014, BY SIGN PRO INC. ALL DESIGNS PRESENTED ARE THE SOLE PROPERTY OF SIGN PRO INC. AND MAY NOT BE REPRODUCED IN PART OR WHOLE WITHOUT WRITTEN PERMISSION FROM SIGN PRO INC.



signpro-usa.com

60 Westfield Drive
 Plantsville, CT 06479
 860.229.1812



SIGN TYPE

Pylon

PAGE

9 of 9