


PROJECT NO : NBL-1446

SEAL :

 DATE :

CONSULTANT :

CLIENT :


KEY PLAN :

PROJECT LOCATION :
 CHARLTON ROAD
 (ROUTE 20)
 STURBRIDGE, MA
 01566

ORIGINAL ISSUE	DATE
ZONING SUBMISSION	03.26.21
REVISIONS & SUBMISSIONS	DATE
1	
2	
3	
4	
5	
6	
7	
8	

DRAWING NAME :
 EXTERIOR
 ELEVATIONS -
 COLORED

DRAWING NO :
 CP1.3



FRONT ELEVATION NTS **A**



LEFT ELEVATION NTS **B**



RIGHT ELEVATION NTS **C**



REAR ELEVATION NTS **D**

PROJECT NO: NBL-1446

SEAL:

DATE:

CONSULTANT:

CLIENT:

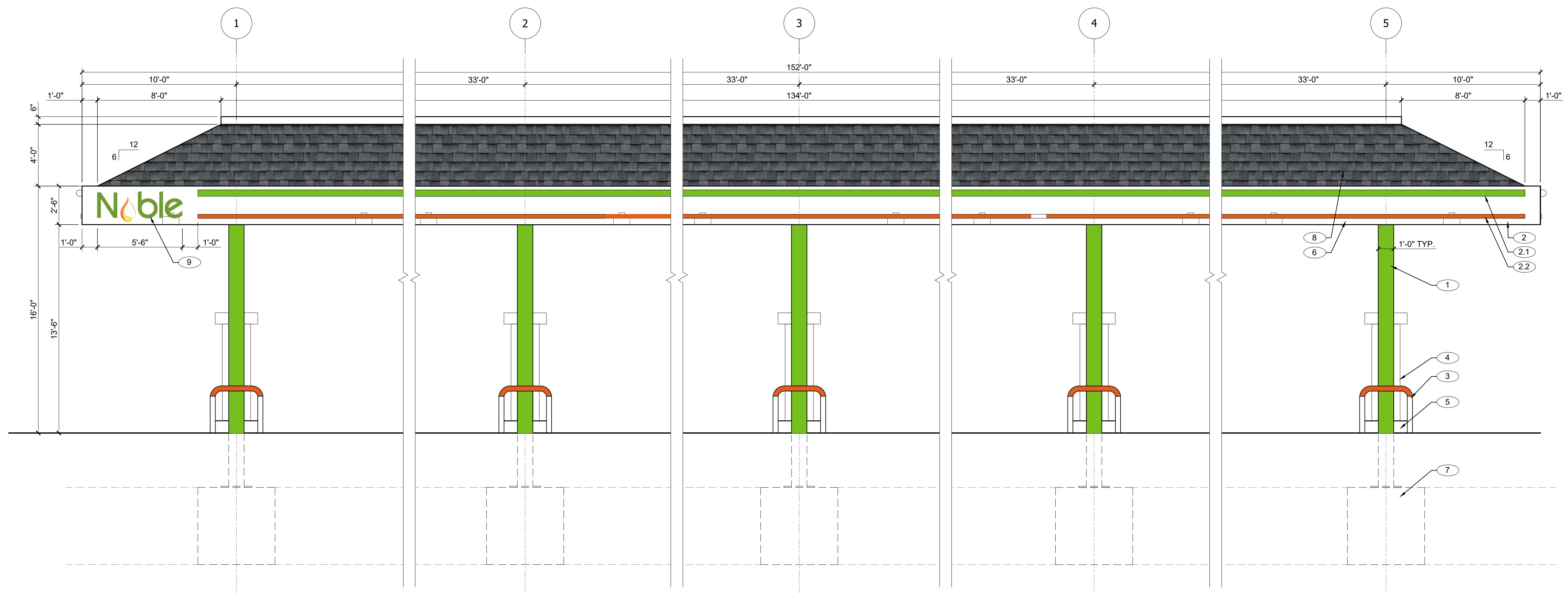
KEY PLAN:

PROJECT LOCATION:
**CHARLTON ROAD
 (ROUTE 20)
 STURBRIDGE, MA
 01566**

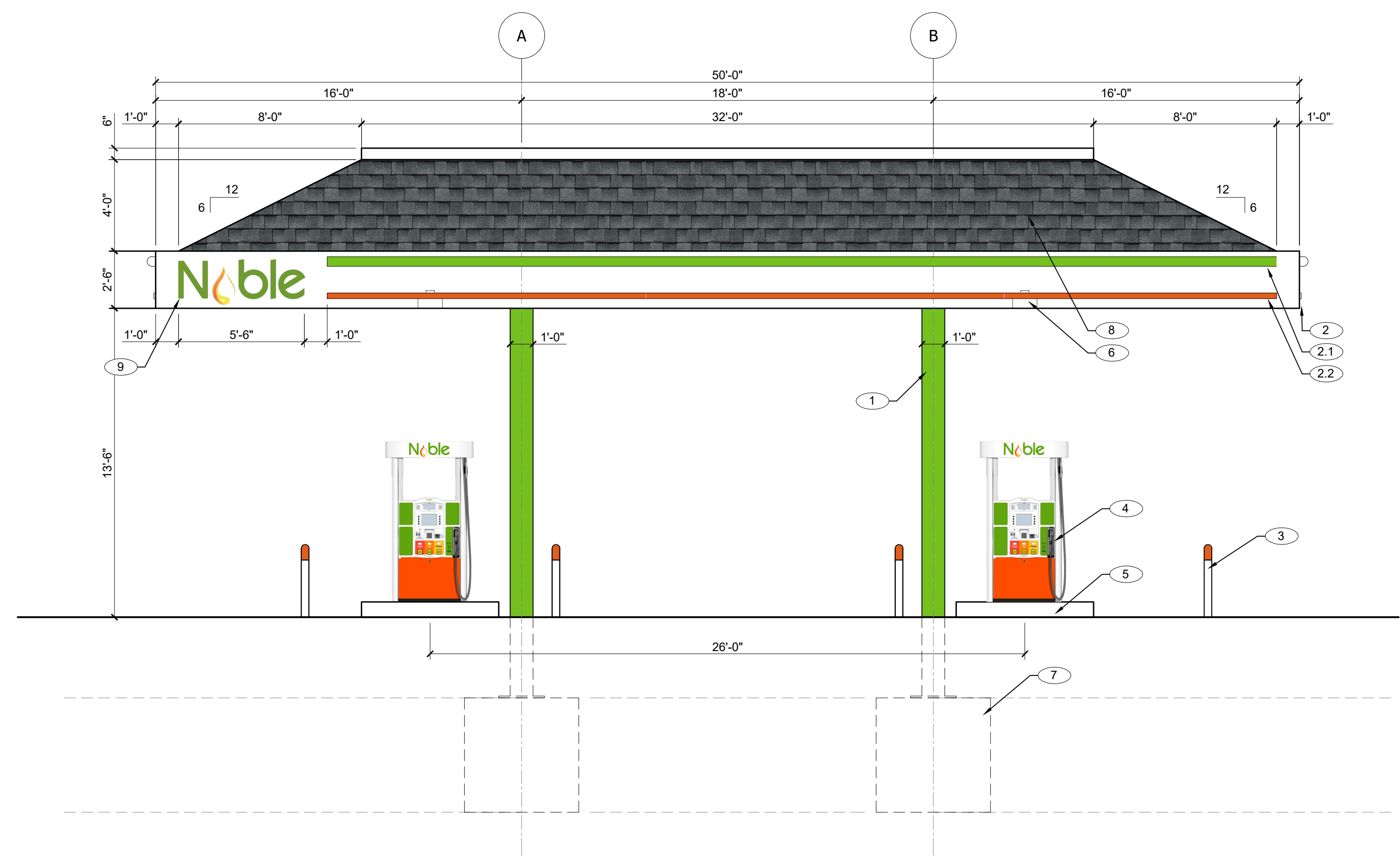
ORIGINAL ISSUE	DATE
ZONING SUBMISSION	03.26.21
REVISIONS & SUBMISSIONS	DATE
1	
2	
3	
4	
5	
6	
7	
8	

DRAWING NAME:
**CANOPY
 ELEVATIONS**

DRAWING NO:
CP1.5



NORTH WEST ELEVATION 1/4" = 1'-0" **1**



SOUTH WEST ELEVATION 1/4" = 1'-0" **2**

ELEVATION KEY NOTES

- GREEN BAND PMS #368C
- ORANGE BAND PMS #1655C
- FOX HOLLOW GRAY ARCHITECTURAL SHINGLES

- KEY NOTE NUMBERS ON CANOPY ELEVATIONS DENOTED WITH THIS SYMBOL (#) → CORRESPOND TO THE FOLLOWING ITEMS:
1. SQUARE STEEL CANOPY COLUMN, PAINTED OUTRAGEOUS GREEN, SEMI-GLOSS FINISH #SW6922.
 2. 30" HIGH ALUMINUM CLAD PRE-ENGINEERED STEEL FRAMED CANOPY - PAINTED WHITE IN SATIN FINISH.
 - 2.1. 5" HIGH GREEN BAND PMS# 368C
 - 2.2. 2" HIGH ORANGE BAND PMS# 1655C.
 3. 36" HIGH X 4" DIA. PIPE BOLLARDS PAINTED WHITE ON BASE AND ORANGE ON ROUNDED TOP
 4. FUEL DISPENSERS - TYPE, SIZE AND GRAPHICS - TBD.
 5. 6" HIGH CONCRETE DISPENSER ISLAND.
 6. LED RECESSED CANOPY LIGHT FIXTURE. REFER TO SITE PACKAGE FOR ADDITIONAL INFORMATION.
 7. REINFORCED CONCRETE FOOTING.
 8. MANSARD STYLE CANOPY ROOF WITH ARCHITECTURAL SHINGLES. COLOR TO BE 'FOX HOLLOW GRAY'.
 9. 5'-6" WIDE 'NOBLE' CHANNEL LETTER SIGN CENTERED VERTICALLY ON CANOPY 12" FROM SIDE EDGE. SIGN SF TOTAL = 11 SF.

ELEVATION KEY NOTES

PROJECT NO: NBL-1446

SEAL:



DATE:

CONSULTANT:

CLIENT:



KEY PLAN:

PROJECT LOCATION:
 CHARLTON ROAD
 (ROUTE 20)
 STURBRIDGE, MA
 01566

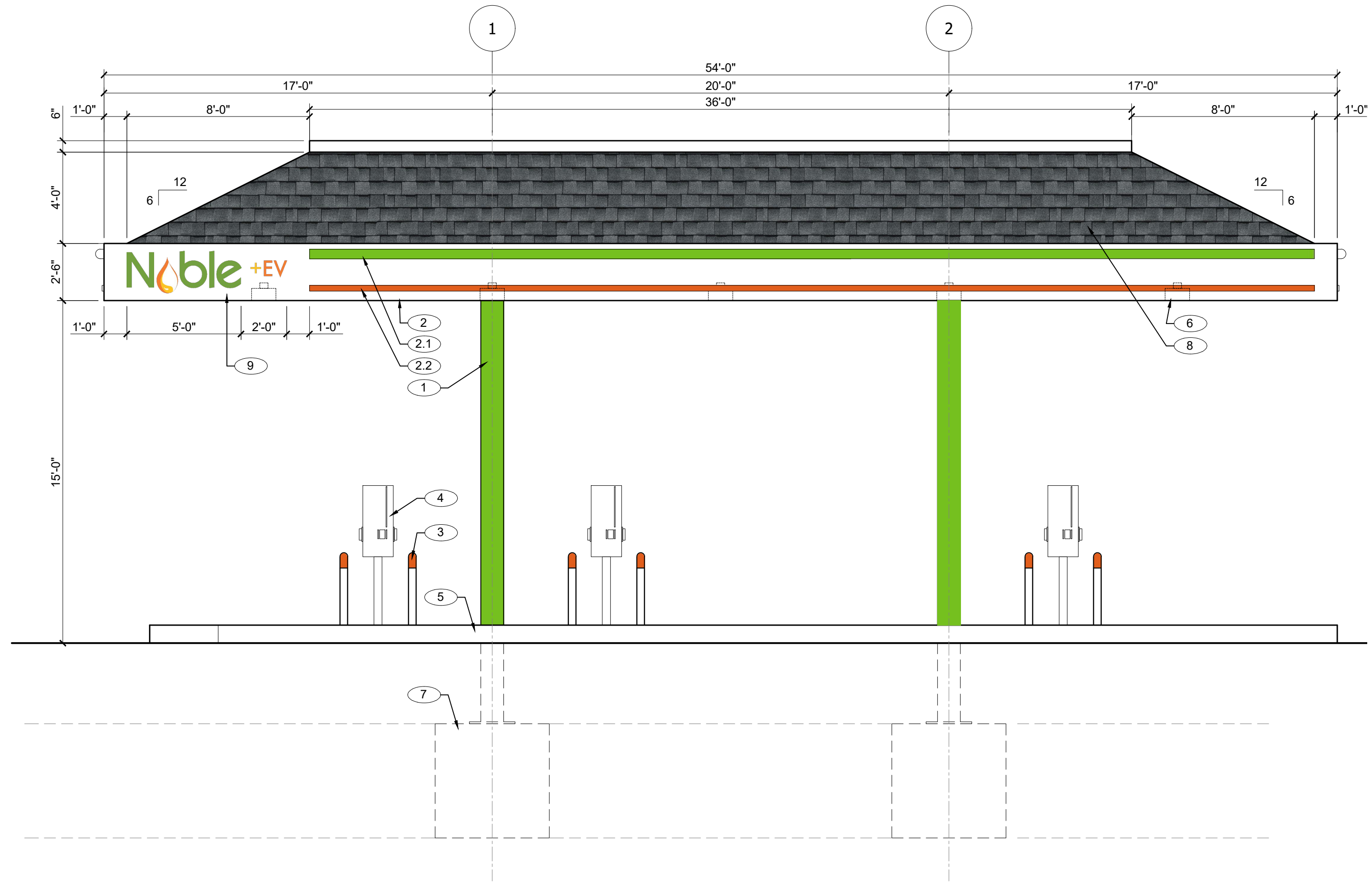
ORIGINAL ISSUE	DATE
ZONING SUBMISSION	03.26.21

REVISIONS & SUBMISSIONS	DATE
1	
2	
3	
4	
5	
6	
7	
8	

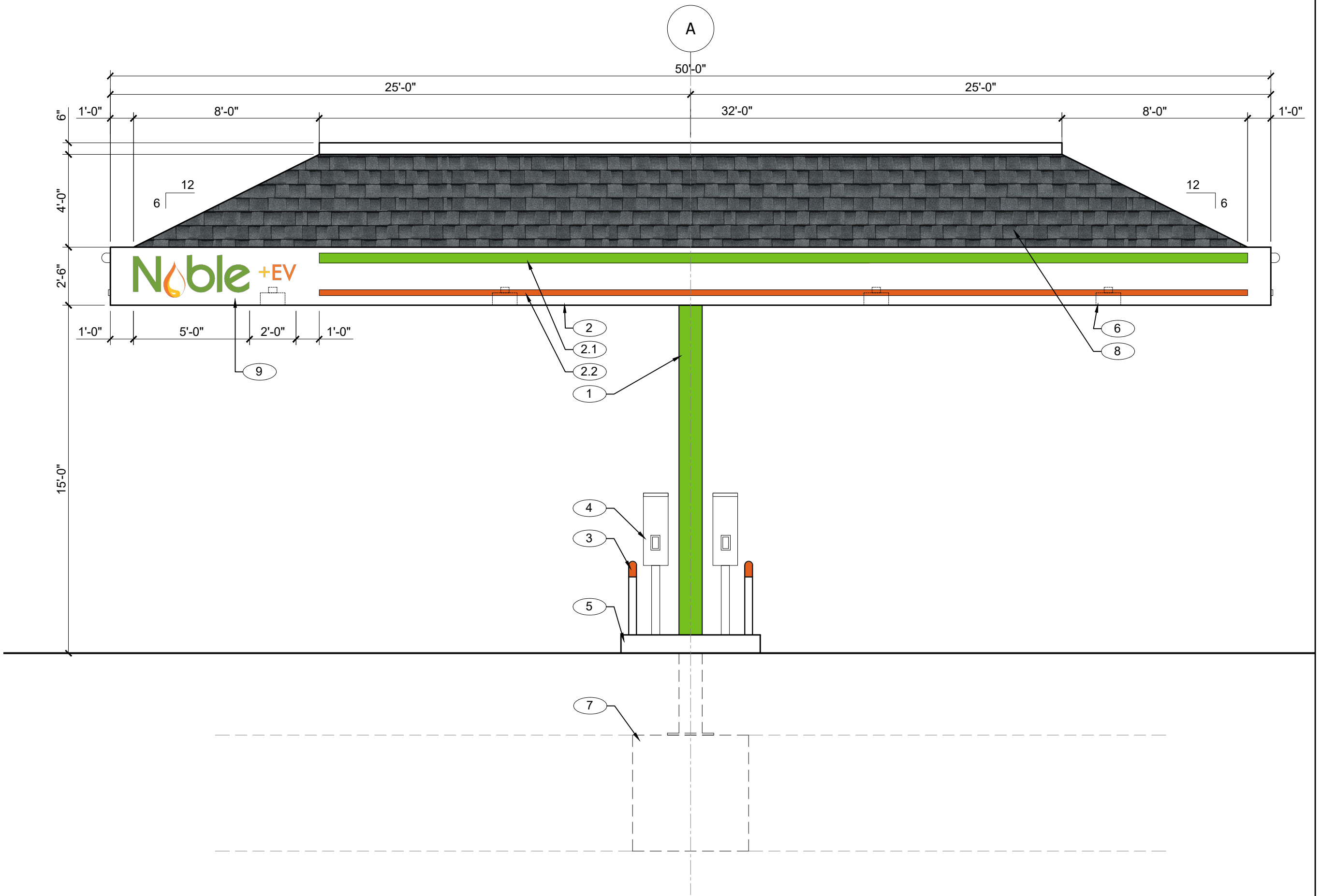
DRAWING NAME:
ELECTRIC VEHICLE CANOPY ELEVATIONS

DRAWING NO:
CP1.8



DRAWING NO:
CP1.8



NORTH WEST ELEVATION 1/4" = 1'-0" **1**



SOUTH WEST ELEVATION 1/4" = 1'-0" **2**

-  - GREEN BAND / LOGO
PMS #368C
-  - ORANGE BAND / LOGO
PMS #1655C
-  - ARCHITECTURAL SHINGLES
FOX HOLLOW GRAY

- KEY NOTE NUMBERS ON CANOPY & SIGN ELEVATIONS DENOTED WITH THIS SYMBOL (#) → CORRESPOND TO THE FOLLOWING ITEMS:
1. SQUARE STEEL CANOPY COLUMN, PAINTED OUTRAGEOUS GREEN, SEMI-GLOSS FINISH #SW6922.
 2. 30" HIGH ALUMINUM CLAD PRE-ENGINEERED STEEL FRAMED CANOPY - PAINTED WHITE IN SATIN FINISH.
 - 2.1. 5" HIGH GREEN BAND PMS# 368C
 - 2.2. 2" HIGH ORANGE BAND PMS# 1655C.
 3. 36" HIGH X 4" DIA. PIPE BOLLARDS PAINTED WHITE ON BASE AND ORANGE ON ROUNDED TOP.
 4. JUICEBAR GEN 3 400 SERIES - 40A LEVEL 2 CHARGING STATION.
 5. 6" HIGH CONCRETE ISLAND.
 6. LED RECESSED CANOPY LIGHT FIXTURE. REFER TO SITE PACKAGE FOR ADDITIONAL INFORMATION.
 7. REINFORCED CONCRETE FOOTING.
 8. MANSARD STYLE CANOPY ROOF WITH ARCHITECTURAL SHINGLES. COLOR TO BE 'FOX HOLLOW GRAY'.
 9. 7'-0" WIDE 'NOBLE EV' CHANNEL LETTER SIGN CENTERED VERTICALLY ON CANOPY 12" FROM SIDE EDGE.

ELEVATION KEY NOTES

