


PROJECT NO : NBL-1446

SEAL :

 DATE :

CONSULTANT :

CLIENT :


KEY PLAN :

PROJECT LOCATION :
 CHARLTON ROAD
 (ROUTE 20)
 STURBRIDGE, MA
 01566

ORIGINAL ISSUE	DATE
ZONING SUBMISSION	03.26.21
REVISIONS & SUBMISSIONS	DATE
1	
2	
3	
4	
5	
6	
7	
8	

DRAWING NAME :
**EXTERIOR
 ELEVATIONS -
 COLORED**

DRAWING NO :
CP1.3



FRONT ELEVATION NTS **A**



LEFT ELEVATION NTS **B**



RIGHT ELEVATION NTS **C**



REAR ELEVATION NTS **D**

PROJECT NO: NBL-1446


SEAL:



DATE:

CONSULTANT:

CLIENT:



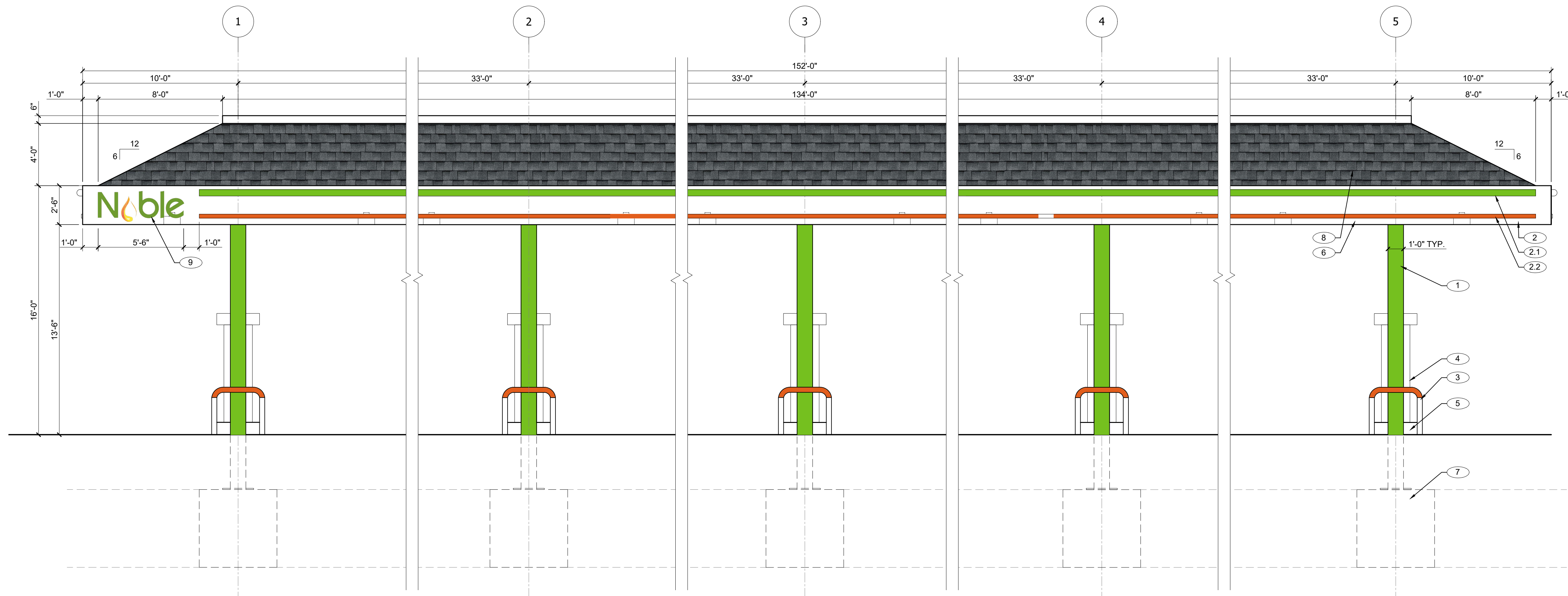
KEY PLAN:

PROJECT LOCATION:
**CHARLTON ROAD
 (ROUTE 20)
 STURBRIDGE, MA
 01566**

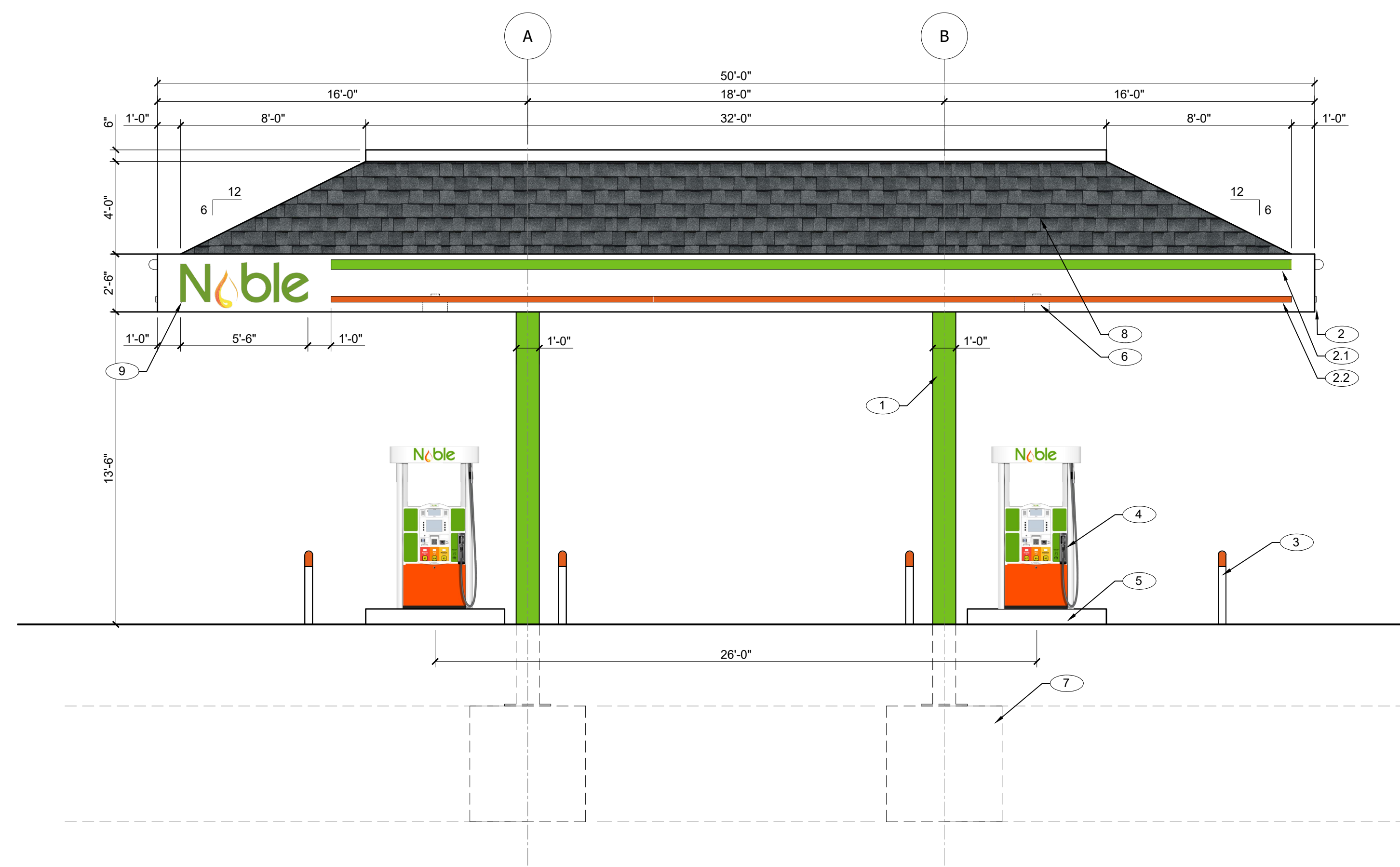
ORIGINAL ISSUE	DATE
ZONING SUBMISSION	03.26.21
REVISIONS & SUBMISSIONS	DATE
1	
2	
3	
4	
5	
6	
7	
8	

DRAWING NAME:
**CANOPY
 ELEVATIONS**

DRAWING NO:
CP1.5



NORTH WEST ELEVATION 1/4" = 1'-0" **1**



SOUTH WEST ELEVATION 1/4" = 1'-0" **2**

ELEVATION KEY NOTES

-  - GREEN BAND PMS #368C
-  - ORANGE BAND PMS #1655C
-  - FOX HOLLOW GRAY ARCHITECTURAL SHINGLES

- KEY NOTE NUMBERS ON CANOPY ELEVATIONS DENOTED WITH THIS SYMBOL (#) → CORRESPOND TO THE FOLLOWING ITEMS:
1. SQUARE STEEL CANOPY COLUMN, PAINTED OUTRAGEOUS GREEN, SEMI-GLOSS FINISH #SW6922.
 2. 30" HIGH ALUMINUM CLAD PRE-ENGINEERED STEEL FRAMED CANOPY - PAINTED WHITE IN SATIN FINISH.
 - 2.1. 5" HIGH GREEN BAND PMS# 368C
 - 2.2. 2" HIGH ORANGE BAND PMS# 1655C.
 3. 36" HIGH X 4" DIA. PIPE BOLLARDS PAINTED WHITE ON BASE AND ORANGE ON ROUNDED TOP
 4. FUEL DISPENSERS - TYPE, SIZE AND GRAPHICS - TBD.
 5. 6" HIGH CONCRETE DISPENSER ISLAND.
 6. LED RECESSED CANOPY LIGHT FIXTURE. REFER TO SITE PACKAGE FOR ADDITIONAL INFORMATION.
 7. REINFORCED CONCRETE FOOTING.
 8. MANSARD STYLE CANOPY ROOF WITH ARCHITECTURAL SHINGLES. COLOR TO BE 'FOX HOLLOW GRAY'.
 9. 5'-6" WIDE 'NOBLE' CHANNEL LETTER SIGN CENTERED VERTICALLY ON CANOPY 12" FROM SIDE EDGE. SIGN SF TOTAL = 11 SF.

ELEVATION KEY NOTES

PROJECT NO: NBL-1446

SEAL:



DATE:

CONSULTANT:

CLIENT:



KEY PLAN:

PROJECT LOCATION:
 CHARLTON ROAD
 (ROUTE 20)
 STURBRIDGE, MA
 01566

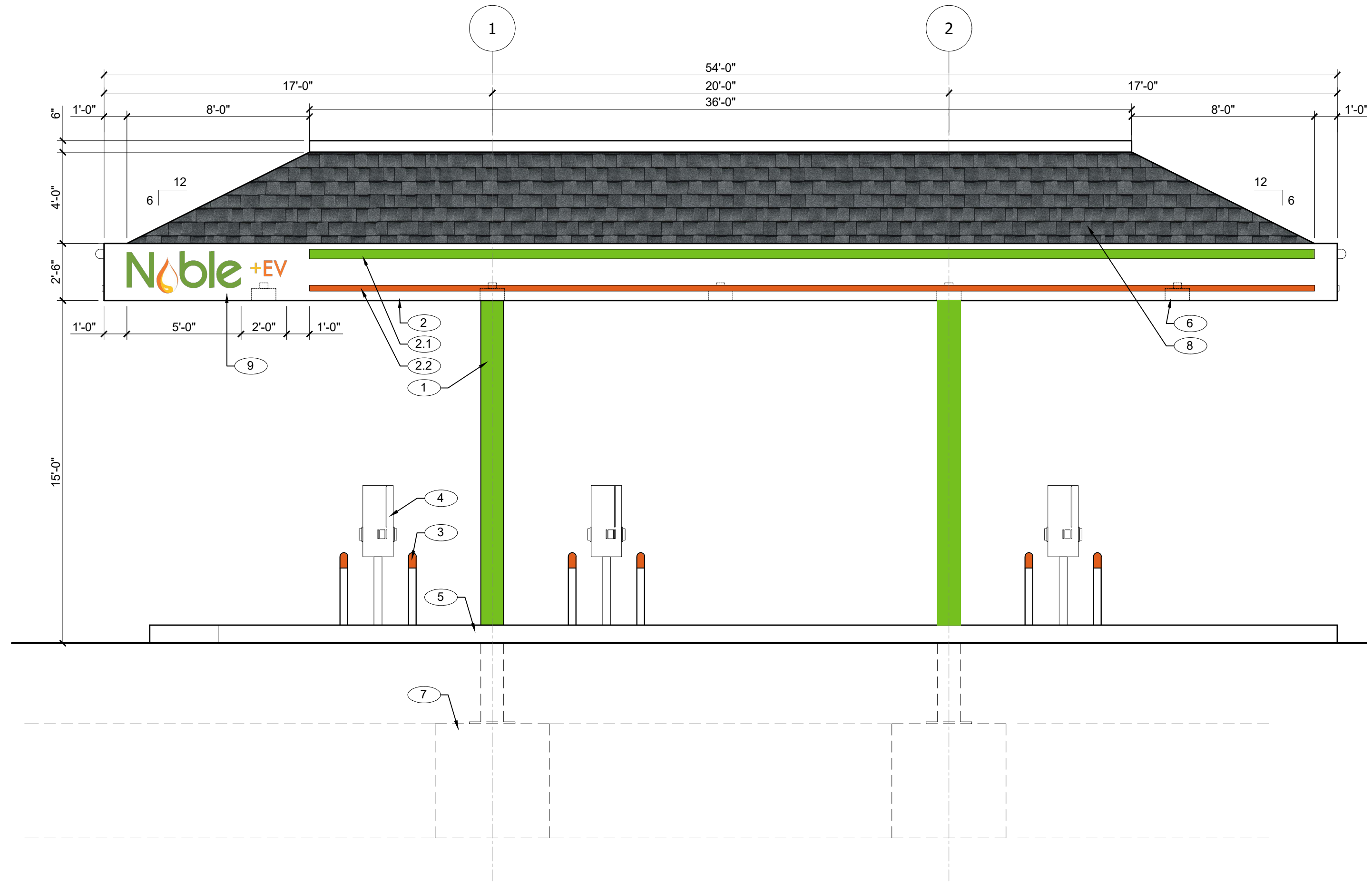
ORIGINAL ISSUE	DATE
ZONING SUBMISSION	03.26.21

REVISIONS & SUBMISSIONS	DATE
1	
2	
3	
4	
5	
6	
7	
8	

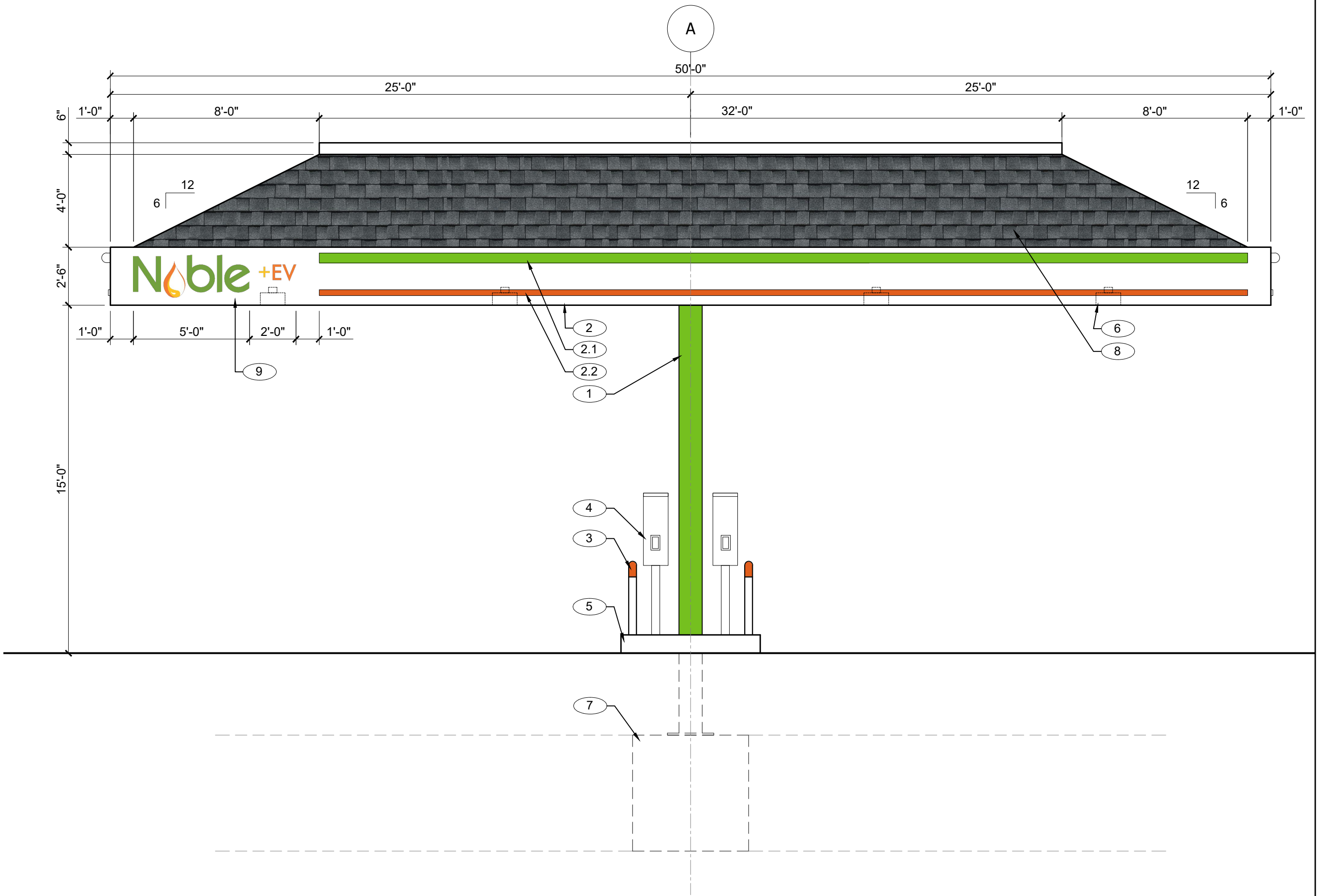
DRAWING NAME:
ELECTRIC VEHICLE CANOPY ELEVATIONS

DRAWING NO:
CP1.8




DRAWING NO:
CP1.8



NORTH WEST ELEVATION 1/4" = 1'-0" **1**



SOUTH WEST ELEVATION 1/4" = 1'-0" **2**

-  - GREEN BAND / LOGO
PMS #368C
-  - ORANGE BAND / LOGO
PMS #1655C
-  - ARCHITECTURAL SHINGLES
FOX HOLLOW GRAY

- KEY NOTE NUMBERS ON CANOPY & SIGN ELEVATIONS DENOTED WITH THIS SYMBOL # → CORRESPOND TO THE FOLLOWING ITEMS:
1. SQUARE STEEL CANOPY COLUMN, PAINTED OUTRAGEOUS GREEN, SEMI-GLOSS FINISH #SW6922.
 2. 30" HIGH ALUMINUM CLAD PRE-ENGINEERED STEEL FRAMED CANOPY - PAINTED WHITE IN SATIN FINISH.
 - 2.1. 5" HIGH GREEN BAND PMS# 368C
 - 2.2. 2" HIGH ORANGE BAND PMS# 1655C.
 3. 36" HIGH X 4" DIA. PIPE BOLLARDS PAINTED WHITE ON BASE AND ORANGE ON ROUNDED TOP.
 4. JUICEBAR GEN 3 400 SERIES - 40A LEVEL 2 CHARGING STATION.
 5. 6" HIGH CONCRETE ISLAND.
 6. LED RECESSED CANOPY LIGHT FIXTURE. REFER TO SITE PACKAGE FOR ADDITIONAL INFORMATION.
 7. REINFORCED CONCRETE FOOTING.
 8. MANSARD STYLE CANOPY ROOF WITH ARCHITECTURAL SHINGLES. COLOR TO BE 'FOX HOLLOW GRAY'.
 9. 7'-0" WIDE 'NOBLE EV' CHANNEL LETTER SIGN CENTERED VERTICALLY ON CANOPY 12" FROM SIDE EDGE.

ELEVATION KEY NOTES

PROJECT NO : NBL-1446



DATE :

CONSULTANT :

CLIENT :



KEY PLAN :

PROJECT LOCATION :
**CHARLTON ROAD
(ROUTE 20)
STURBRIDGE, MA
01566**

ORIGINAL ISSUE DATE

ZONING SUBMISSION 03.26.21

REVISIONS & SUBMISSIONS DATE

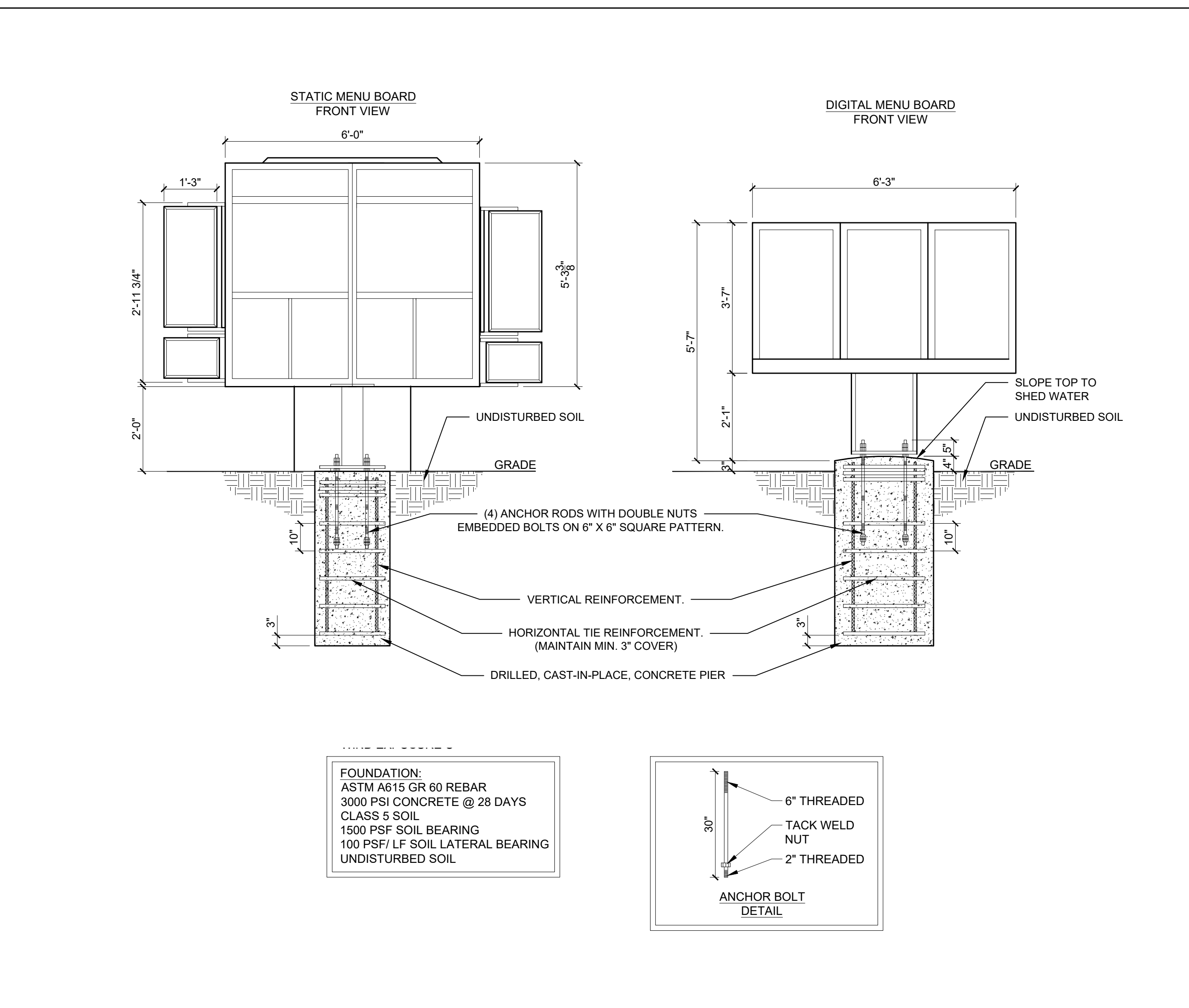
1		
2		
3		
4		
5		
6		
7		
8		

DRAWING NAME :

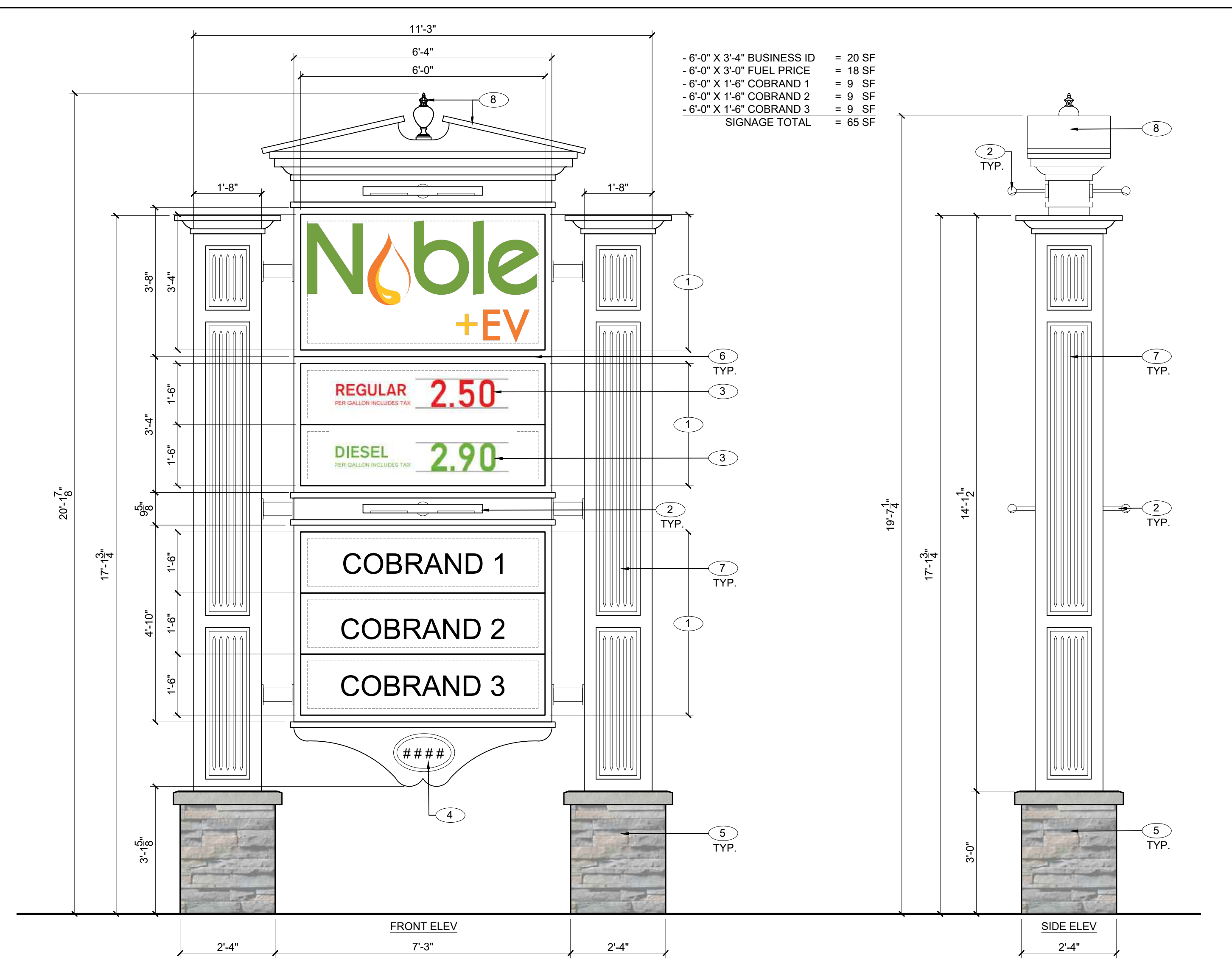
**PYLON SIGN,
LIGHTING SPECS &
DRIVE-THRU MENU BOARD**

DRAWING NO :

CP1.9



DRIVE-THRU MENU BOARD 1/2" = 1'-0" **2**



PYLON SIGN 1/2" = 1'-0" **1**

304 Series™
LED Parking Structure Luminaire

Product Description
Slim, low profile design. Luminaire is constructed from rugged die cast and extruded aluminum components. LED driver is mounted in a sealed weatherproof center chamber that allows for access from below the luminaire. High performance aluminum heat sinks specifically designed for LED parking structure applications.

Performance Summary
- Premium Luminaire™ Product Technology
- Assembled in the U.S.A. of U.S. and Imported parts
- CRI: Minimum 75 CRI
- CCT: 4000K (-/+ 300K), 5700K (+/- 500K) Standard
- Limited Warranty: 10 years on luminaire/10 years on Colorfast DetailGuard™ finish

Accessories

Mount	For Hook & Cord Mount Luminaire
DM Mount	DM Mount

Ordering Information

Product	Optic	Mounting	LED Config	Series	Voltage	Color	Options
304-300	DM	DM	300	300	120V	3000K	DM 300 3000K

CREE LIGHTING

NEXUS LG. T SIGN LIGHT
NEXUS SIGN LIGHT LARGE T-STYLE
154528Z

The Nexus LED collection offers a contemporary silhouette that is fully adjustable, with built-in flexibility and a linear head that rotates 360° for precise adjustments.

FINISH: Bronze
WIDTH: 31.3"
HEIGHT: 4.8"
LIGHT SOURCE: Integrated LED
WATTAGE: 14.5W LED (Incandescent)

HINKLEY
33000 Pitts Col Parkway
Avon Lake, OH 44012
PHONE: (440) 653-5000
Toll Free: 1 (800) 445-5039
hinkley.com

MODERN FORMS
ModernForms.com | Phone: (866) 810-6615 | Fax: (800) 526-2386
Central Distribution Center: 1600 Distribution Ct, Leno Springs, GA 30122
Western Distribution Center: 1750 Archibald Avenue, Ontario, CA 91760

Two If By Sea
WS-W41925

PRODUCT DESCRIPTION
Take shelter from the storm. Like a hard raincoat on the window panes, timeless inspiration is met with modern technology to create a stunning LED luminaire. Beautiful light diffusers through clear, hammered mouth-blown glass for a soft glow on all sides of this geometric wall sconce. Crafted from anodized aluminum and wet-rubbed for outdoor use. This piece is guaranteed to make a grand first impression.

FEATURES
- ACLED driverless technology
- Clear, hammered, mouth-blown glass
- Down light illumination

Specifications
Rated Life: 50,000 Hours
Standards: IP65, Wet Location Listed, Title 24 (AB) 2019 Compliant
Input: 120 VAC
Dimming: ELY
Color Temp: 3000K
CRI: 90
Construction: Aluminum hardware, Clear, hammered, mouth-blown glass

REPLACEMENT PARTS
BPL-GLA-41925 - Outer Glass

Product Certification
UL LISTED, ENEC, CE, IP65, DALI

Product Features
- Adjustable direct or indirect luminaire - 180° Adjustable at knuckle
- 2700K, 3000K or 3500K or 4000K Color Temperature and Amber (585-595nm)
- Forward/Lateral Throw or Flood Optics with diffuse glass sealed lens
- Patented AccuLED Optic™ System
- Universal Input LED Driver Included (120 - 277V, 50/60 Hz)
- ELY or 0-10 Dimming

Dimensions
4.8" (118mm) x 31.3" (793mm) x 7.8" (198mm)

COOPER
Lighting Solutions

Lumière
EON 303-W1-LEDB2
Ceiling / Wall Mount
Direct / Indirect

Typical Applications
- Hospitality - Commercial Landscape - Outdoor Area/ Site - Residential - Architectural

Product Certification
UL LISTED, ENEC, CE, IP65, DALI

Product Features
- GREEN FUEL PUMP GRAPHIC / LOGO PMS #368C
- ORANGE FUEL PUMP GRAPHIC / LOGO PMS #1655C
- YELLOW FUEL PUMP GRAPHIC / LOGO PMS #485C
- FUEL PRICE LETTERING PMS #485C
- PRO FIT CULTURED STONE VENEER ALPINE LEDGE 'PHEASANT'

KEY NOTE NUMBERS ON ABOVE ELEVATIONS DENOTED WITH THIS SYMBOL (#) → CORRESPOND TO THE FOLLOWING ITEMS:

- EXTERNALLY ILLUMINATED SIGNAGE WITH 1-1/2" THICK SOLID ACRYLIC CHANNEL LETTERS ON WHITE PVC BACKGROUND. COLOR OF LETTERING SHALL BE THE SAME ON THE FACE AND SIDES.
- SIGN TO BE EXTERNALLY ILLUMINATED WITH HINKLEY LINEAR LED BAR LIGHTS.
- ACRYLIC FUEL PRICE LETTERING - REGULAR COLOR RED PMS 485C, DIESEL COLOR GREEN PMS #368C.
- CHANNEL LETTER ADDRESS ID PLACARD MOUNTED ON DECORATIVE PVC BASE.
- SIGN BASE - PRO FIT CULTURED STONE - 'ALPINE LEDGE' - 'PHEASANT' W/ 3"x5" STONE CAP.
- 2" H PVC DIVIDERS BETWEEN SIGN CABINETS - COLOR SHALL BE WHITE.
- ARCHITECTURAL GRADE PVC FLUTED PANELS - COLOR SHALL BE WHITE.
- ARCHITECTURAL GRADE PVC ACORN PEDIMENT - COLOR SHALL BE WHITE.

TECHNICAL DATA
PVC Mounting Temperature Rating
Cooling Supply With 9°C Minimum

GENERAL ILLUMINATION FIXTURE