



THERMOSPAN[®] 200

PREMIUM THERMAL
EFFICIENCY AND LOW
MAINTENANCE



WAYNE DALTON COMMERCIAL DOORS

Thermospan[®] 200

INSULATED SECTIONAL STEEL DOORS CUT YOUR TOTAL COST

Wayne Dalton Thermospan[®] 200 provides premium thermal efficiency and low maintenance costs, resulting in a door that costs less to own. Continuous foamed-in-place polyurethane insulation and a non-conductive thermal break between the inner and outer skins combine to provide a U-value of .057 and an R-value of 17.50.

The Wayne Dalton Thermospan[®] Series doors are the only doors in the industry with patented, roll-formed integral struts on each section, making them the most rigid doors available.

- PREMIUM THERMAL QUALITIES
R-VALUE: 17.50, U-VALUE: 0.057
- THERMAL BREAK
- 2 INTEGRAL STEEL STRUTS PER SECTION FOR SUPERIOR STRENGTH AND RIGIDITY
- STANDARD SIZES UP TO
40' 2" WIDE AND 32' 1" HIGH
- STEEL/POLYURETHANE/STEEL
- CFC AND HCFC FREE/FULLY ENCAPSULATED INSULATION



Sectional Door Systems

Standard Features Overview

Thermal Efficiency

R-value	17.50 (3.09 W/Msq)
U-value	0.057 (.324 W/Msq)
Thermal Break	Thermoplastic adhesive with rubber seal
Air Filtration	.07 cfm/ft2

Construction

Section Thickness	1-13/16" (46mm)
Integral Struts	Two 1-3/4" struts per section for strength and rigidity
Max Standard Height	32'1" (9779 mm)
Max Standard Width	40'2" (12243 mm)
Steel Gauge	27
Interior per section	Roll formed with two 1-3/4" integral struts sealed with polypropylene rib caps
Standard Springs	15,000 cycle

Warranty	TEN (10) YEARS against cracking, splitting, rust deterioration and delamination. ONE (1) YEAR against defects in material and workmanship
----------	----------------------------------------------------------------------------------------------------------------------------------------------

Color and Window Options

Interior Color	White
----------------	-------

Codes and ASTM Standard Class

STC (ASTM E 413)	Class 22
OITC (ASTM E 1332)	Class 19
ASTM E 84	Class A
UBC 17-5	Meets
ASTM D 1929	Flash ignition = 734° F, Self ignition = 950° F

Options

- Pass Door
- Vision Lites
- Aluminum Full View Sections
- Chain Hoist Operation
- Motor Operation
- Sensing Edges
- Photo Eyes
- High Cycle Spring (25K, 50K, 100K)
- 3" Track Option
- Solid Shafts
- Perimeter Weatherseal
- Special Track Designs
- Mullions

For those who make energy conservation combined with durability and strength a high priority, the Thermospan® 200 is the ideal choice in sectional doors.

Why choose the Thermospan® 200?

- Strength and Rigidity – Features two patented 1¾" integral roll-formed struts per section providing the highest strength-to-weight ratio.
- Virtually maintenance free due to the surface of hot-dipped galvanized, structural quality steel that is factory finished with pre-painted primer and baked on finish.
- Thermal Efficiency – innovative thermal break that keeps the interior skin at room temperature, preventing condensation and frost and thereby resisting corrosion. Flexible vinyl bulb seal and non-corrosive polymer retainer prevent water and air infiltration at the bottom of the door. Long Lasting – Reinforcement plates are located at all hardware attachment locations, and industry standard commercial-grade, heavy-duty, hot-dipped galvanized hardware also contribute to the Thermospan® 200's long service life.

Finish Options

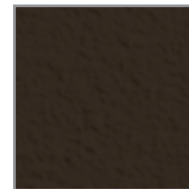
White Embossed Stucco Finish



Tan Embossed Stucco Finish



Brown Embossed Stucco Finish



Contact Wayne Dalton for additional sizes and colors.

Wind load options available



THERMOSPAN® 200



Lite Options



Vision Lites allow for visibility while maintaining security



Aluminum full view sections allow for maximum natural light and visibility

Joint seal

prevents air infiltration and saves energy.

Thermal break

separates inner and outer skins so virtually no heat or cold is conducted through section.

Prepainted inner and outer skins for added corrosion-resistance.

NOTE: Both skins are also hot-dipped galvanized steel for further protection against corrosion.

Solid polyurethane core

provides maximum thermal efficiency and adds to quiet operation and strength.

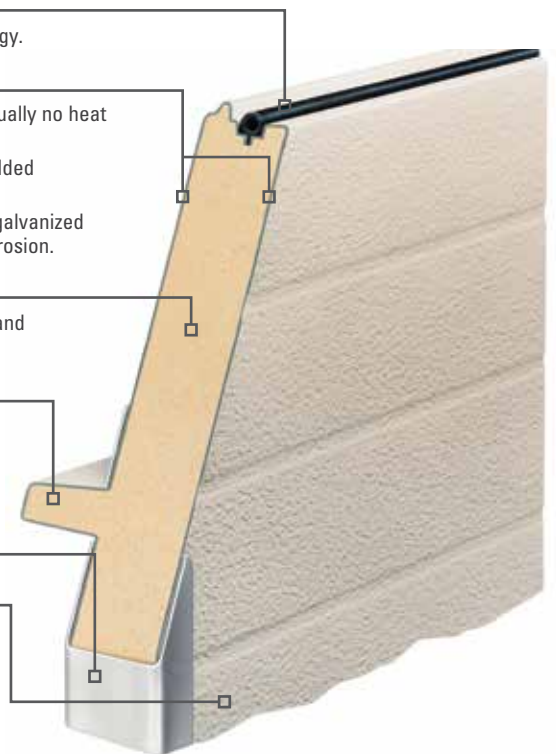
Integral struts

Two 1 $\frac{3}{4}$ " patented, integral roll-formed struts per section increases rigidity and strength.

Two-inch nominal thickness.

Embossed pinstriping

(grooves) on Thermospan® 200's embossed stucco outer skin adds strength and enhances appearance.



General Operating Clearances

Type	Headroom***		Sideroom**		Depth into Room	Center Line of Springs	
	2" Track	3" Track	2" Track	3" Track	2" & 3" Track	2" Track	3" Track
Standard Lift Manual 12" R	13"-17"	NA	4.5"	5.5"	Opening Height +18"	Opening Height +12"	N/A
Standard Lift Manual 15" R	15"-20"	16"-21"				Opening Height +13"	Opening Height +14"
Standard Lift Motor Oper. 12" R	15"-20"	NA			Opening Height +66"	Opening Height +12"	N/A
Standard Lift Motor Oper. 15" R	15"-20"	18"-24"				Opening Height +13"	Opening Height +14"
High Lift Manual	High Lift +12"		24" One Side		Opening Height -Lift +30"	Opening Height +Lift +6.5"	Opening Height +Lift +7.5"
High Lift Motor Oper.							
Vertical Lift Manual	Door Height +20"		4.5"	5.5"	18"	Double Door Height +13"	
Vertical Lift Motor Oper.			24" One Side				
Low Headroom Manual*	6"-15"	6"-15"	6"	9"	Opening Height +20" to -26"	N/A	
Low Headroom Motor Oper.*	9"-17"	9"-17"			Opening Height +66"		

Panel/Section Selection Guide

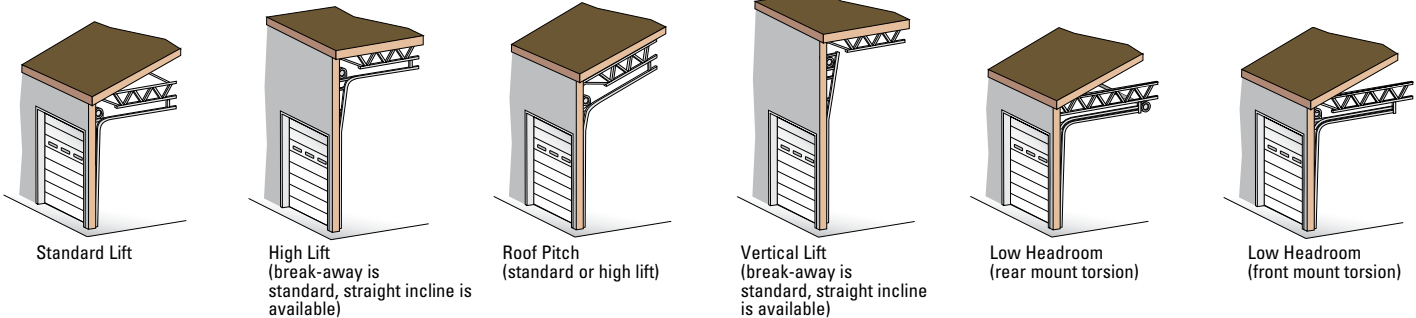
Door Section and Lite Selection			Door Height and Section Selection	
Door Width	Number of Panels	Maximum Number of Windows	Door Height	Number of Sections
Up to 9'2"	2	2 or 3	Up to 8'1"	4
9'3" to 12'2"	3	3 or 4	8'-8" to 10'1"	5
12'3" to 16'2"	4	4 or 5	10'5" to 12'1"	6
16'3" to 19'2"	5	6	12'2" to 14'1"	7
19'3" to 24'2"	6	7	14'2" to 16'1"	8
24'3" to 28'2"	7	7	22'-2" & Up	Call Factory
28'3" to 32'2"	8	8	For assistance from the factory, please call 800 827-3667	
32'3" to 33'11"	9	9		
34'0" to 36'11"	10	10		
37'0" to 38'11"	11	11		
39'0" to 40'2"	12	12		

*Springs must be rear mount to achieve minimum headroom listed. Front mount torsion headroom depends on drum size, and varies over the range listed.

**8" side-room required, one side, for doors with chain hoist.

***Headroom for standard lift depends on drum size, and varies over the range listed.

Track Selection Guide



FOR TECHNICAL INFORMATION, VISIT WWW.WAYNE-DALTON.COM/COMMERCIAL

Architect Resource Center

www.wayne-dalton.com/commercial

Go to www.wayne-dalton.com/commercial and click on the Architect Resource Center. Here you will quickly find all of the specifications, drawings and documents you need to complete your project.

DISTRIBUTED BY:

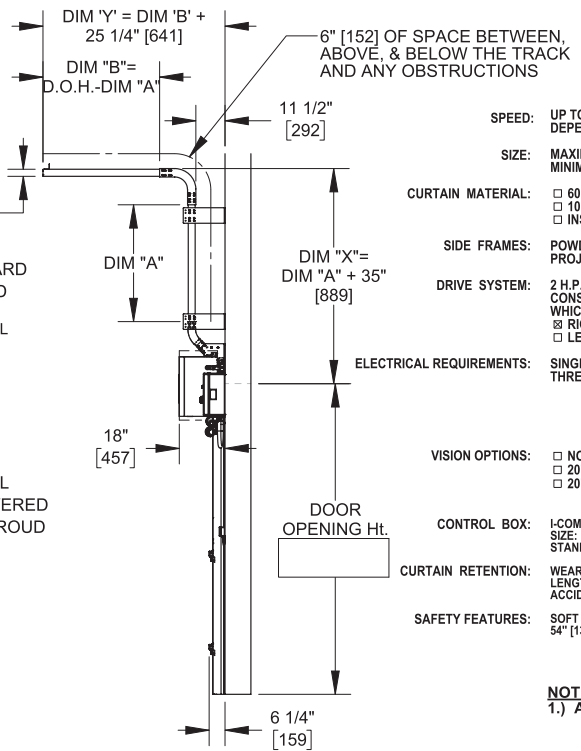
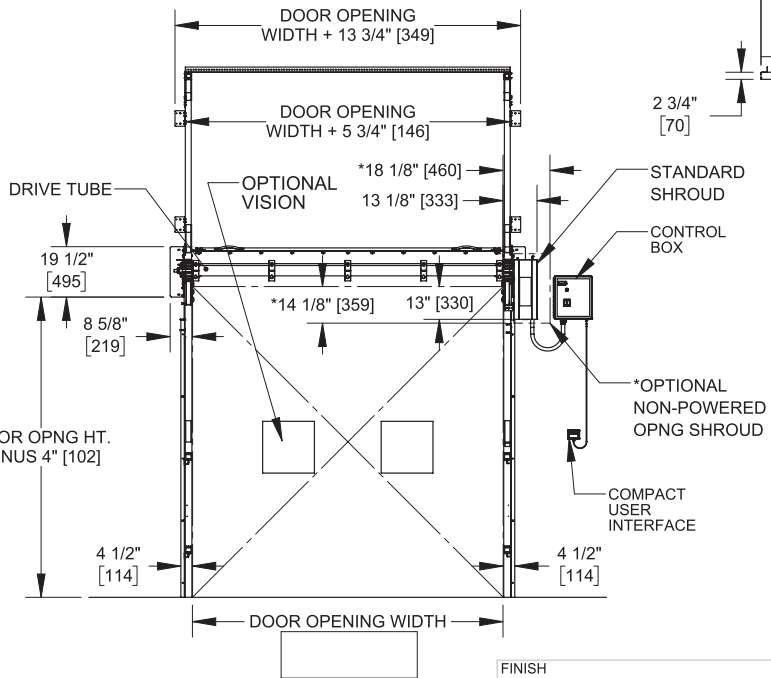
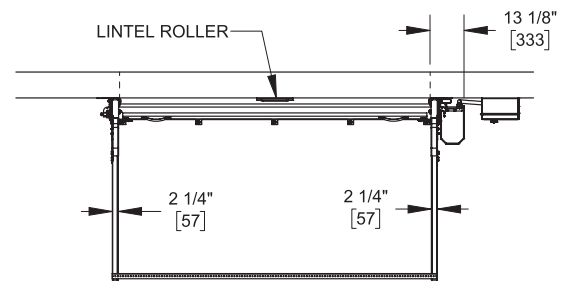


4

3

2

1



REVISION HISTORY				
REV.	DATE	NOTE	ECN	BY
B	7/7/2015	ADD COMPACT USER INTERFACE	7000	TDL
C	12/8/2015	UPDATE MAXIMUM SIZES	7066	TDL
D	12/1/2016	CHANGED TO RIGHT HAND DRIVE ONLY	7092	CDH

SPECIFICATIONS

- SPEED:** UP TO 100' [2540MM]/SEC WITH STANDARD VARIABLE FREQUENCY DRIVE. TOP SPEED IS DEPENDENT ON DOOR SIZE.
- SIZE:** MAXIMUM: 16' [4876MM] wide x 16' [4876MM] high (LARGER THAN 16' TALL, SEE 7830A025) MINIMUM: 3' [914MM] wide x 3' [914MM] high
- CURTAIN MATERIAL:**
 - 60 MIL POLYPROPYLENE (BLUE)
 - 100 MIL POLYPROPYLENE BLU ORG GRY GRN WHT RED
 - INSULATED CURTAIN (Max Size: 10' [3048MM] wide x 16' [4876MM] high)
- SIDE FRAMES:** POWDER COATED ALUMINUM EXTRUSION, 4 1/2" [115MM] WIDE x 4-3/4" [121MM] PROJECTION.
- DRIVE SYSTEM:** 2 H.P. [1.5 kW] or 1.5 H.P. [1.1 kW] MOTOR, VARIABLE FREQ. DRIVE, TRAXION DRV SYSTEM - CONSISTING OF A DRIVE GEAR, DRIVE SPHERES AND A COMPOSITE EDGE MATERIAL WHICH IS ATTACHED TO THE CURTAIN.
 - RIGHT HAND DRIVE (SHOWN)
 - LEFT HAND DRIVE (7830A035)
- ELECTRICAL REQUIREMENTS:**
 - SINGLE PHASE: 220V - 240V, 60 HZ
 - THREE PHASE: 208V, 60 HZ 240V, 60 HZ 400V, 50/60 HZ 480V, 60 HZ 575V, 60 HZ
- VISION OPTIONS:**
 - NONE
 - 20" x 20" [508 mm x 508 mm] REPLACEBLE VISION PANELS
 - 20" x 20" [508 mm x 508 mm] GRAY SCREEN WITH REMOVABLE CLEAR COVER
- CONTROL BOX:** I-COMM DIGITAL CONTROLLER, VARIABLE FREQUENCY DRIVE. SIZE: 14" x 16" x 8" [356MM x 407MM x 204MM] STANDARD COMPACT USER INTERFACE.
- CURTAIN RETENTION:** WEAR RESISTANT LEXAN WIND GUIDES KEEP TENSION ON THE CURTAIN THE ENTIRE LENGTH OF THE SIDE FRAME. INCLUDES TRUE AUTO RE-FEED SYSTEM IN CASE OF ACCIDENTAL IMPACTS TO CURTAIN.
- SAFETY FEATURES:** SOFT EDGE TECHNOLOGY, TWO THRU-BEAM PHOTO EYES MOUNTED AT 18" [457MM] AND 54" [1372MM] OFF THE FLOOR.

NOTE:
1.) ALTERNATE DIMENSIONS IN [], ARE IN MILLIMETERS.

FINISH		MATERIAL	
CONFIDENTIAL		DRAWN BY CDH	
UNLESS OTHERWISE SPECIFIED DIMENSIONS ARE IN INCHES.		DRAWN DATE 1/27/2015	
TOLERANCES:		INITIAL ECN 6964	
.X = ±.050		DATE ISSUED 12/1/2016	
.XX = ±.010		REFERENCE	
.XXX = ±.005		ALL SHEETS ARE THE SAME REVISION STATUS	
ANGLE = ±1.0°		DO NOT SCALE DRAWING	
THIRD ANGLE PROJECTION		SIZE MODEL B FASTRAXLD	
		DWG NO 7830A022	
© 2015 RITE-HITE® DOORS INC.		TITLE ARCHITECTURAL APPROVAL FASTRAXLD, HIGH LIFT RIGHT HAND DRIVE	
		REV D	
		SCALE 1:48 PART# SHEET 1 OF 1	

4

3

2

1



 **Chase Doors**
World's Leading Manufacturer of Specialty Doors

Chase ColdGuard® Doors
Cold Storage Doors



Chase ColdGuard® Cold Storage Doors



Chase Doors began operating in 1932 as an insulated walk-in cooler and specialty refrigeration equipment manufacturer. Today, with over 400 employees and four vertically integrated manufacturing facilities, Chase has earned its reputation for high quality products that are reliable, durable, and competitively priced.

Attention to Detail

Chase Doors offers superior design and engineering processes which enhance the functionality, durability, and life of its products. Chase ColdGuard cold storage doors are custom manufactured. Chase's team of in-house engineers and customer service professionals work with you every step of the way throughout the order process to ensure accuracy before sending the door to production. A seasoned production team, including experienced craftspeople are cross trained to perform a variety of duties ensuring that Chase can meet customer demand with minimal disruption. The ColdGuard production facility is supported by a vertically integrated manufacturing operation including CNC stamping, metal bending and shearing stations, a welding station, track and operator sub-assembly stations, a temperature controlled foaming press and final assembly operations with final quality assurance procedures.

Quick and Easy to Install

Quality doesn't stop after the door is manufactured and passes the final inspection. Chase ensure that each door will arrive safe at the installation site with custom packaging for each door. All doors ship complete with a casing system, reducing installation time. Most components are pre-assembled, reducing field labor and eliminating potential installation errors. Motor operated doors are assembled and bench tested to ensure maximum performance right out of the box. All ColdGuard doors are quick and easy to install and backed by a five year warranty.



Chase ColdGuard Proven Performance

From walk-in coolers to industrial warehouse applications, ColdGuard cold storage doors combine the latest technology, premium materials and design features to meet the demanding requirements of the cold storage industry. Available as a sliding, swing and vertical lift door, all ColdGuard doors incorporate a tough and thermally neutral fiberglass reinforced pultrusion (FRP) framework, extruded plastic polymer casings and Non-CFC foamed-in place polyurethane core. We understand the conditions that cold storage doors must endure. Superior design methods and non-corrosive materials ensure that ColdGuard will perform and look good for years to come!



Durability, Quality and High Performance

All ColdGuard doors are constructed using fiberglass reinforced pultrusions, creating a highly durable perimeter framework. Corners have internal steel reinforcements. Panels are foamed-in-place with Non-CFC polyurethane insulation. All hardware mounting points have internal UHMW blocking, eliminating organic materials in the door panel. This design results in an incredibly strong panels with high impact resistance and light weight, insuring years of worry free service.

Quality Hardware

ColdGuard doors comes standard with high quality hardware and stainless steel fasteners to ensure a longer door life and minimal maintenance. This truly remarkable door is backed with a five year warranty!

Advantages of Fiberglass:

- Non-conductive material provides exceptional insulation qualities
- As strong as steel, but 30% lighter
- Impervious to water and moisture
- Maintains its shape and properties even in extremely cold conditions



FRP Framework

ColdGuard Swing Doors

ColdGuard single and double panel swing doors are used in applications where environmental control is necessary. ColdGuard cooler and freezer swing doors provide proven performance and time-tested sealing for any new or existing application. ColdGuard cooler and freezer doors are suitable for interior and exterior applications, and can be custom manufactured to your exact requirements.

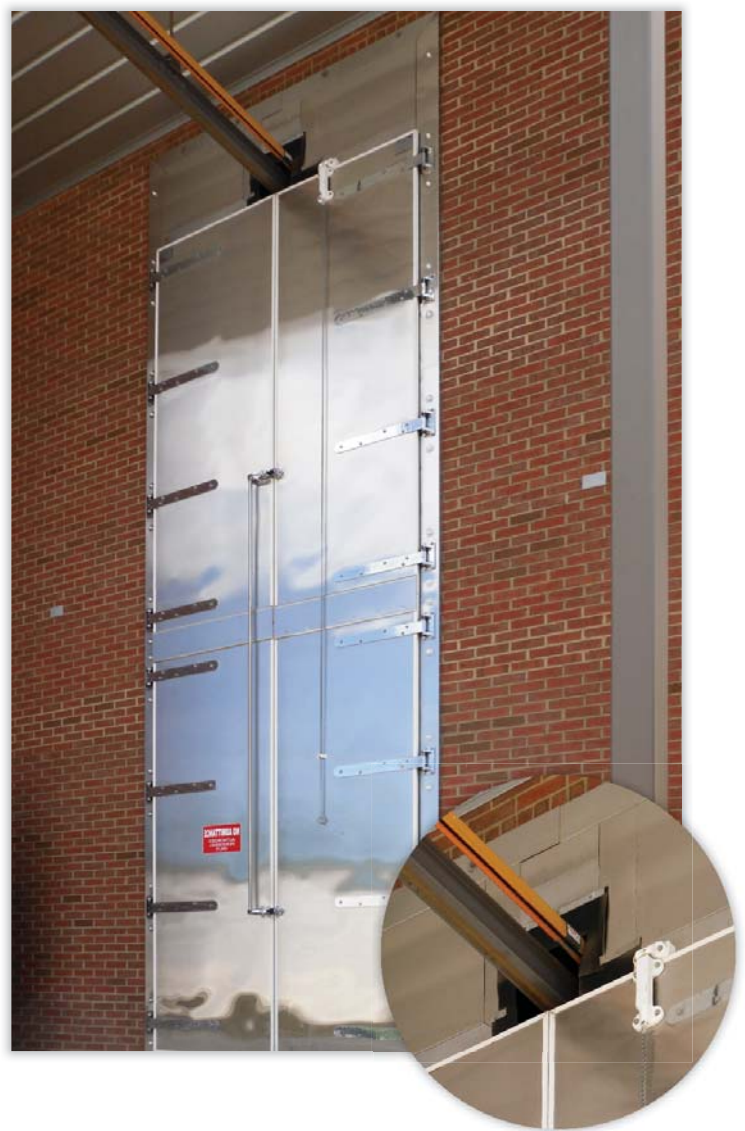
Innovation and Time-Tested Manufacturing Design

ColdGuard cooler and freezer swing doors have set the bar when environmental control is required. ColdGuard combines the latest technology, premium materials and design features to provide maximum thermal separation. The doors feature a durable and thermally neutral fiberglass reinforced (FRP) framework, extruded polymer casings and Non-CFC foamed-in-place polyurethane core. This innovative design produces a strong and durable door system that will perform flawlessly for years to come and is backed by a 5 year warranty.

ColdGuard uses magnetic vinyl gaskets on all swing doors. The type of gasket that is used is extremely important to minimize energy loss in a cold storage door. Magnetic gaskets accommodate more “out of square” conditions than traditional compression gaskets and ensure a positive seal.



Magnetic Gasket Seal



Meat Rail

ColdGuard Swing Door Options



Swing Design Features and Benefits

- Unique design allows Non-CFC foamed-in-place polyurethane insulation to lock in place with the fiberglass reinforced polymer (FRP) producing an extremely durable, insulated panel.
- Magnetic vinyl push-in gasket is standard on all ColdGuard swing doors.
- A variety of finishes are available, the standard finish is 26 gauge USDA stucco embossed galvanized in gray, white or black.
- Heavy duty chrome plated hinges and latch. Zinc plated strap hinges are standard on larger doors.
- Frame is flush with the floor line, making installation easy as there is no need to embed a sill in concrete.
- Self-lubricating cam lift hinges raise the door when opened, providing reduced friction on floor seal and eliminating the need for sloped floors.
- Sweep sill gasket prevents thermal infiltration.
- Door panels are available in 4" and 6" panel thickness with an R Value of 32 and 48, respectively.
- Emergency release latch allows the door to be opened from the inside even when padlocked (shown below). A recessed version is available.
- All doors are custom manufactured to your exact requirements.
- Freezer doors come standard 115V full perimeter heat to prevent moisture or ice buildup.
- Factory tested and shipped ready for installation.



Glow in the Dark Emergency Release



Chrome Plated Latch

Swing Door Options

- Cladding: Stainless steel, embossed white aluminum, embossed mill aluminum, smooth white aluminum, smooth white galvanized and smooth galvalume
- Backup mirror image casing
- Jamb wall caps
- Thru-wall jamb casings
- Keyed latch
- Door closer with standard soft touch latch
- Casing mounted thermometer
- Casing mounted light switch
- Panic bar latching hardware
- Heat in door and casing (recommended on freezers below -20°F)
- Polished aluminum diamond tread kick plates
- Satin finish stainless steel kick plates
- Heated or non-heated vision windows
- Heated or non-heated threshold
- 6" door thickness for extreme cold environments
- Custom sizes available



Optional Panic Bar



Optional Door Closer

ColdGuard Sliding Doors



The ColdGuard horizontal sliding door is designed for high cycle, abusive applications and is the workhorse of our cold storage door product offering. Chase knows that durability is the key to long life in a horizontal door. We incorporate materials and design features including a maintenance free, heavy duty track system with permanently lubricated rollers, molded polymer face casings, and impact resistant FRP perimeter panel framing. These “best in class” features are standard in all manual and motorized door systems. ColdGuard horizontal doors are available single and bi-parting for cooler or freezer applications.

PerfectSeal™ Gasket System

Most competitive cold storage door manufacturers use a balloon type perimeter gasket system. As the door system closes, the door panel slides “down and in” against the perimeter seals. Balloon seals are subject to wear, distortion and tearing as the door opens and closes. The PerfectSeal gasket system utilizes a heavy duty, reinforced blade seal around the perimeter of the door. This solves a number of issues including premature replacement of seals due to wear and tear. PerfectSeal gaskets also accommodate irregularity in the opening, providing a positive seal even when less than perfect conditions exist.

Sliding Door Track and Hold Close Bracket

Sliding cold storage door systems have to stand up to extreme conditions and heavy usage every day. Our SD (standard duty) and EHD (extreme heavy duty) track systems have been designed to perform reliable for years with virtually no required maintenance. Our SD model is designed for smaller to midsize doors (6’ wide or less) while the EHD model is ideal for any size door in the most abusive environment. An optional hood system is available with the EHD track. Manual doors come standard with an adjustable track mounted hold close bracket. The hold close device prevents “bounce back” on manually operated doors.

Roller Assembly

ColdGuard Heavy Duty Rollers incorporate a built in anti-derail design that insures that the door system remains on the track and operational. Slotted mounting holes and a jack bolt make installation and adjustment of the door system quick and easy. Permanently lubricated rollers provide smooth, quiet performance for many years.

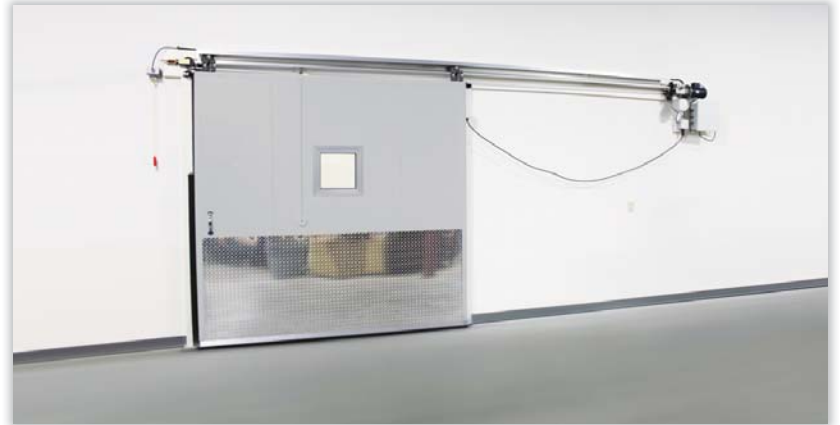


Extra Heavy Duty (EHD) Track System



Standard Duty (SD) Track System and Roller Assembly

ColdGuard Sliding Doors



The Perfect Combination

The ColdGuard track design and PerfectSeal gasket system combination results in a door system that is easy to operate and maintain. Traditional cold storage doors have a track system that causes premature wear of the gaskets by pulling the panel down and in towards the gasket when closed. This ensures a positive seal, but makes the door difficult to open. The PerfectSeal gasket system eliminates the need for this, making the door easier to operate. Simple is better.

Under Panel Guide System

All ColdGuard cold storage doors incorporate an adjustable floor guide system that installs under the door panel. This concealed design eliminates the floor rollers that many cold storage doors require. The under panel guide is easy to install, can be adjusted for a perfect seal, and has a much cleaner look than bulky rollers that are prone to being hit by loads passing through the opening. For more details on this option view the installation video on www.chaseddoors.com.

ColdGuard Sliding Door Features and Benefits:

- Specially designed gusseted steel corner brackets are machined to perfectly fit inside the profile of the FRP pultrusions, providing exceptional frame strength and eliminating the need for aluminum, wood and PVC bracing.
- Unique design allows Non-CFC foamed-in-place polyurethane insulation to lock components in place with the fiberglass reinforced polymer (FRP), producing an extremely durable, insulated panel.
- Door panels are available in 4" and 6" panel thickness with an R Value of 32 and 48, respectively.
- Maintenance free heavy duty extruded aluminum track rail with two, 700 pound capacity 1 ¼" x 4" diameter double ball bearing polyurethane rollers. Rollers are backed by a lifetime warranty.
- Heavy duty UHMW under-panel track guides with stainless channel guide the sliding panel as it opens and closes.
- Freezer doors have perimeter heat to prevent moisture or ice buildup.
- Electric models feature a manual emergency release on both sides of the door to allow access during power failure. All freezer doors are ETL listed.
- All door components including track, panel gasket system and optional operator are designed to provide years of trouble free service.
- Factory tested and shipped ready for installation.
- All doors are custom manufactured to your exact requirements.



PerfectSeal™ Gasket System



Adjustable Concealed Floor Guide System

ColdGuard Sliding Door Options

Sliding Door Options

- Standard finish is 26 gauge USDA embossed white galvanized steel. Optional finishes include stainless steel, embossed white aluminum, embossed mill aluminum, smooth white galvanized, embossed black galvanized, embossed white galvanized, smooth white aluminum, and embossed gray galvanized
- Vision panels available in non-heated (cooler) or heated (freezer) versions
- Polished aluminum diamond kickplates and satin finish stainless steel kickplates.
- Powder coated, galvanized or stainless steel track hoods for washdown or exterior applications
- 6" door thickness with an R Value of 48, for extreme cold environments
- Backup mirror image casings
- Jamb wall caps
- Thru-wall jambs (constructed with molded polymer plastic)
- Padlock locking device (available with electric interlock)
- Metal clad vertical casings and header
- Standard or Heavy Duty PLC controlled operators - Standard Duty (NEMA 12) or Washdown (NEMA 4)
- An array of activators includes radio control, motion detectors, photo cells and induction floor loop
- All operated doors ship with two pull cord activators (freezer modles - 1 heated, 1 non-heated)
- Time delay close
- Electric interlock
- 3-button partial opening control (close-open-stop)



Image above showing optional track hood

Extreme Washdown Package

For applications requiring heavy washdowns, we offer the ability to create an extreme washdown sliding door. This door includes the following stainless steel:

- Hangers
- Rollers
- Top roller brackets
- Bottom roller brackets
- Stop brackets
- Fasteners
- Hood

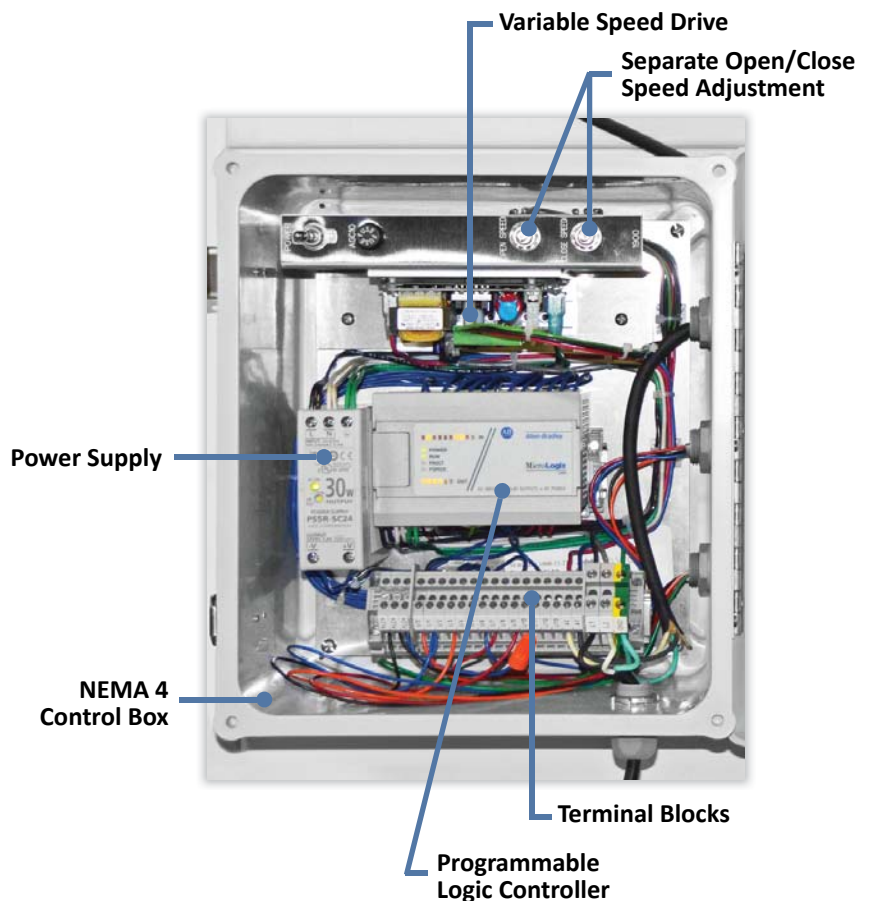
ColdGuard Sliding Door 1900-RLS Operator



Developed and designed by Chase engineers, the 1900-RLS provides exceptional performance in cold storage environments. The 1900-RLS provides field proven safe, dependable operation. Even large, heavy doors operate smoothly and effortlessly. The 1900-RLS incorporates standard features including pre-wired components, variable speed operation with soft start/stop, a rotary limit switch, and a NEMA 4X control box. The soft start feature ensures smooth panel travel on startup, stop and reversing. The rotary limit switch is preset to 90% of travel at the factory reducing installation time and potential field mistakes that can occur in the field. Plus, permanently lubricated components and self-diagnostics reduce troubleshooting and maintenance that is typical on many door systems.

Benefits of the ColdGuard Operator:

- A NEMA 4 enclosure, suitable for washdown applications
- Variable speed motor opens at speeds up to 40 inches per second for a single slide door and up to 80" per second for a bi-parting door (subject to door size)
- Soft start/stop feature allows the operator to slow down at the end of the door's travel adding life to the door system and provides an added measure of safety and reduced preventative maintenance
- Pre-wired and pre-mounted control panel from the factory simplifies installation and allows the factory to fully test the operator prior to shipping, virtually, "plug and play"
- 120, 208, 240, or 480 volt incoming single and 3-phase power options available
- UL listed and labeled control panel



ColdGuard Vertical Lift Doors

ColdGuard vertical lift doors are available manually operated, or with electric motor operation. Vertical lift doors are ideal for loading docks, warehouses and areas with limited side room. Chase ColdGuard vertical lift doors incorporate the same FRP perimeter framework that our horizontal doors utilize, insuring a durable panel with excellent insulation qualities. Chase vertical lift doors are available for both cooler or freezer applications, and are available in 4" and 6" thick panels.

Design Features

- The Door track is designed for both smooth travel and a tight seal
- The heavy duty hardware and track are coated for corrosion resistance, including 3" tracks, torsion spring and two pull cord switches each with 20' polypropylene pull cords for electric models
- EPDM synthetic "T" rubber seal is located on the face of the casings. The track mounted neoprene rubber low temperature cloth reinforced gasket is located on bottom edge of the door
- Freezer doors are equipped with 115 volt perimeter heat cables
- Optional counterbalance weight system is available
- Manual or electric operation
- Door panels are available in 4" and 6" panel thickness, with an R Value of 32 and 48, respectively.
- All doors are custom manufactured to your exact requirements
- Every door is completely tested before shipping

Power Operator

- Totally enclosed, fan cooled, 3/4 HP, jackshaft electric operator
- Photo-eye beams mounted near floor level on door casing, stops and reverses door to fully open position if any obstruction is sensed while closing
- Includes two pull cords (1 heated in freezer applications)



ColdGuard Vertical Lift Options



Vertical Lift Options

- Stainless steel, embossed white aluminum, embossed mill aluminum, smooth white aluminum, smooth white galvanized and smooth galvalume
- Heated or non-heated vision window panel
- Backup mirror image casings
- Modified vertical lift design
- Chain hoist
- Jamb wall caps
- Aluminum diamond tread kick plate
- Satin finish stainless kick plate
- Custom sizes available
- Vertical lift power operators

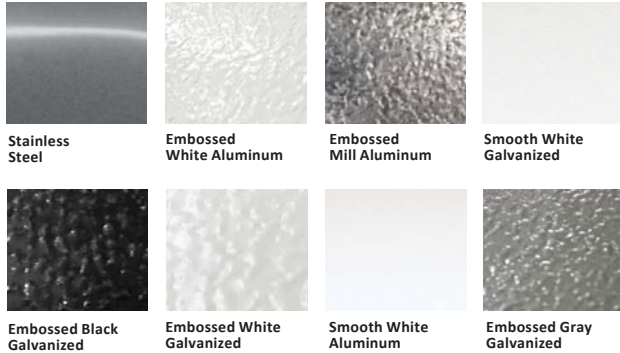


Heavy Duty Vertical Lift Track



ColdGuard Finish and Color Options

In addition to stainless steel, ColdGuard doors are now available in white, gray and black. Standard finish is 26 gauge USDA embossed white galvanized steel. Optional finishes include stainless steel, embossed white aluminum, embossed mill aluminum, embossed black galvanized, embossed white galvanized, embossed gray galvanized, smooth white aluminum, smooth white galvanized, and smooth galvalume.



Colors may vary, contact Chase Doors for exact color match.



More Cold Storage Solutions from Chase Doors



EconoClear™ Flexible Doors



Durulite® Industrial Traffic Doors



DuraSpan™ Insulated Industrial Curtains



Econo Max® Strip Doors



World's Leading Manufacturer of Specialty Doors

Chase Industries, Inc.

Cincinnati • Redmond • North Little Rock 

Toll-Free: 800.543.4455 • 513.860.5565 • Fax: 800.245.7045

Web site: www.chasedoors.com • www.coldstoragedoorsonline.com

E-mail: info@chasedoors.com



Brochure #CGB0813
Printed in the U.S.A.

In our continuing effort to improve our products, some specifications or descriptions may change. We reserve the right to make such changes without notice or recourse.

Series D200 Narrow Stile • Series D300 Medium Stile • D500 Wide Stile
 1 3/4" Standard Aluminum Swing Entrance Doors



CONFIGURATIONS

Narrow Stile (2 1/8") • Medium Stile (3 1/2") • Wide Stile (5")

EFCO's standard entrances are designed for educational facilities, shopping centers, offices and other facilities requiring security and egress capabilities. EFCO standard entrances are joint plug welded at every corner to provide superior strength in all applications. Offered in narrow, medium and wide stiles, EFCO standard entrances can accommodate a wide range of applications. Multiple glazing options provide flexibility to meet specific design requirements, and the product's ability to accommodate most hardware applications increases its versatility. EFCO's standard entrances provide the complete solution for your fenestration needs.

Features

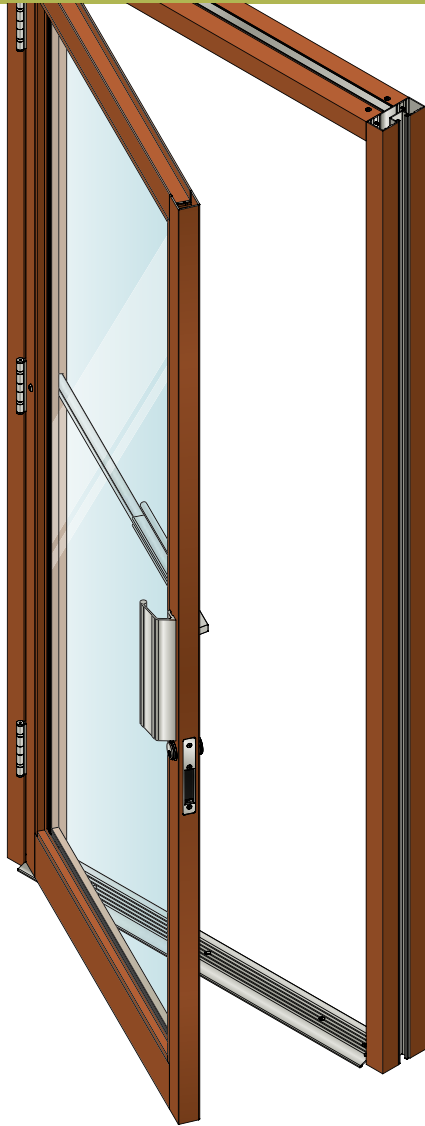
- Bracket reinforced and deep penetration welded corners
- Accepts most major brands of locking hardware and panic devices
- Accommodates up to 1" glazing
- Accommodates all surface mounted, concealed overhead and floor closers
- Tall bottom rails available
- Variety of cross rails, door sweeps, and crash bars available
- Anodized and painted finishes available

Benefits

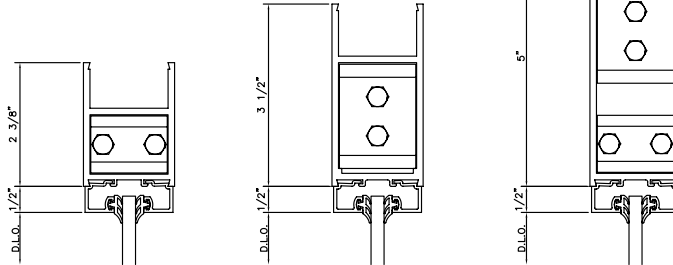
- Meets or exceeds most specifications for commercial entrances
- Able to comply with special hardware specifications
- Flexibility in design requirements for glazing
- Unrestricted closer choices
- Meets ADA requirements
- Increases configuration options
- Multiple options to answer economic and aesthetic concerns



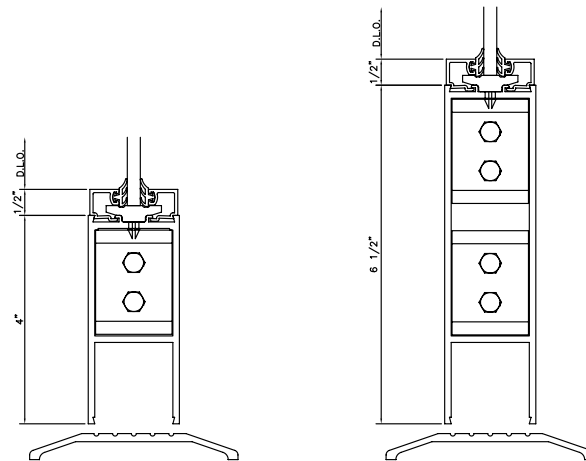
Series D200 Narrow Stile • Series D300 Medium Stile • D500 Wide Stile 1 3/4" Standard Aluminum Swing Entrance Doors



TOP RAILS



BOTTOM RAILS



PERFORMANCE DATA

D200 NARROW STILE (SINGLE DOOR LEAF)

AIR INFILTRATION..... < .50 CFM/SF @ 1.56 PSF

D300 MEDIUM STILE (SINGLE DOOR LEAF)

AIR INFILTRATION..... < .50 CFM/SF @ 1.56 PSF

D500 WIDE STILE (SINGLE DOOR LEAF)

AIR INFILTRATION..... < .50 CFM/SF @ 1.56 PSF

A = Estimated values and/or designations
 B = Non-standard size or configuration
 C = Dual glazed
 D = 1" Insulated - 1/4" clear, 1/2" air, 1/4" clear
 E = 1" Insulated - 1/4" clear (Low Emissivity), 1/2" air, 1/4" clear
 F = 1" Insulated - 1/4" clear (Low Emissivity), 1/2" argon, 1/4" clear
 G = 1" Insulated - 1/4" clear, 1/2" air, 1/4" clear (Low Emissivity)

D200, D300, & D500 GLAZING CHART	POLYCARBONATE			GLASS OR PANEL											
	3/16"	1/4"	5/16"	1/4"	1/4"	5/16"	7/16"	1/2"	9/16"	5/8"	3/4"	7/8"	15/16"	1"	1-1/16"
MONOLITHIC GLASS	A	A	C	A	A	A	C	C	C	C					
INSULATED GLASS													A	A	C

** - Laminated Glass Thickness
 A - Available Glazing Option
 C - Adaptor and/or gasket required
 blank - N/A



Series D200 Narrow Stile • Series D300 Medium Stile • D500 Wide Stile 1 3/4" Standard Aluminum Swing Entrance Doors

Door Construction

Door rails and stiles have a depth of 1 3/4", and are constructed of 6063-T6 aluminum alloy. Nominal material wall thickness is .125". Corner construction utilizes a heavy, concealed, reinforcement bracket that is deep penetration and fillet welded. See Illustration 1.

Weather-Stripping

Single doors are weather-stripped at the frame with ASTM E2203 compliant bulb gasket and extruded door stops, which are available in integral, snap-in, and surface mounted varieties. See frame section. All pairs of doors are dual weather-stripped at the astragal with Poly-Pile.

Hardware

EFCO standard doors accommodate most hardware types. Doors accept offset pivots, center pivots, butt hinges, or continuous gear hinges. Maximum security deadbolts, short throw deadbolts, hook bolts, latch locks, and flush bolts are a few of the compatible types of locks. Panic devices include concealed rod devices, rim devices and removable mullions. Concealed overhead, surface mounted and floor closers are accommodated. EFCO Ultraline™ push-pulls are standard.

Glazing

Doors are glazed with extruded aluminum, pressure fitting glass stops. Glazing of 3/16" to 1 1/16" insulated units are available. See Glazing chart for exact size.

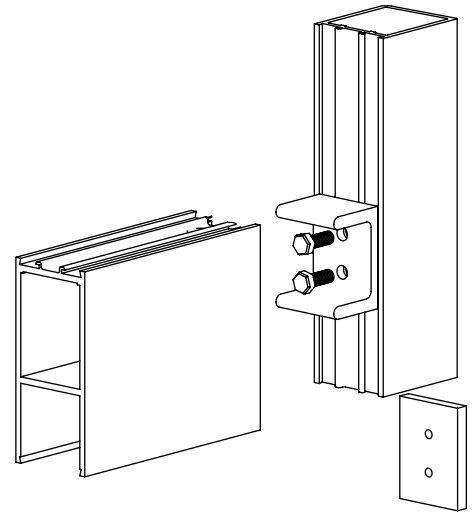


Illustration 1

