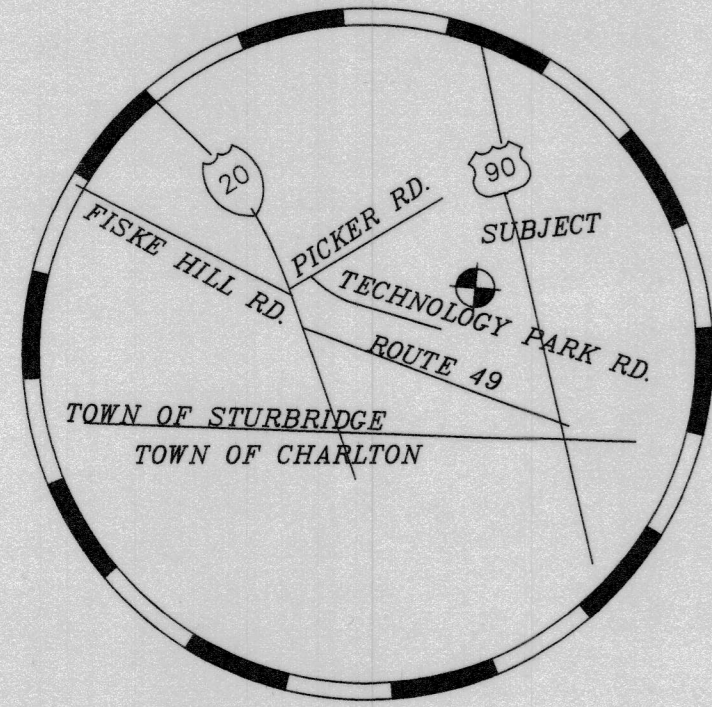
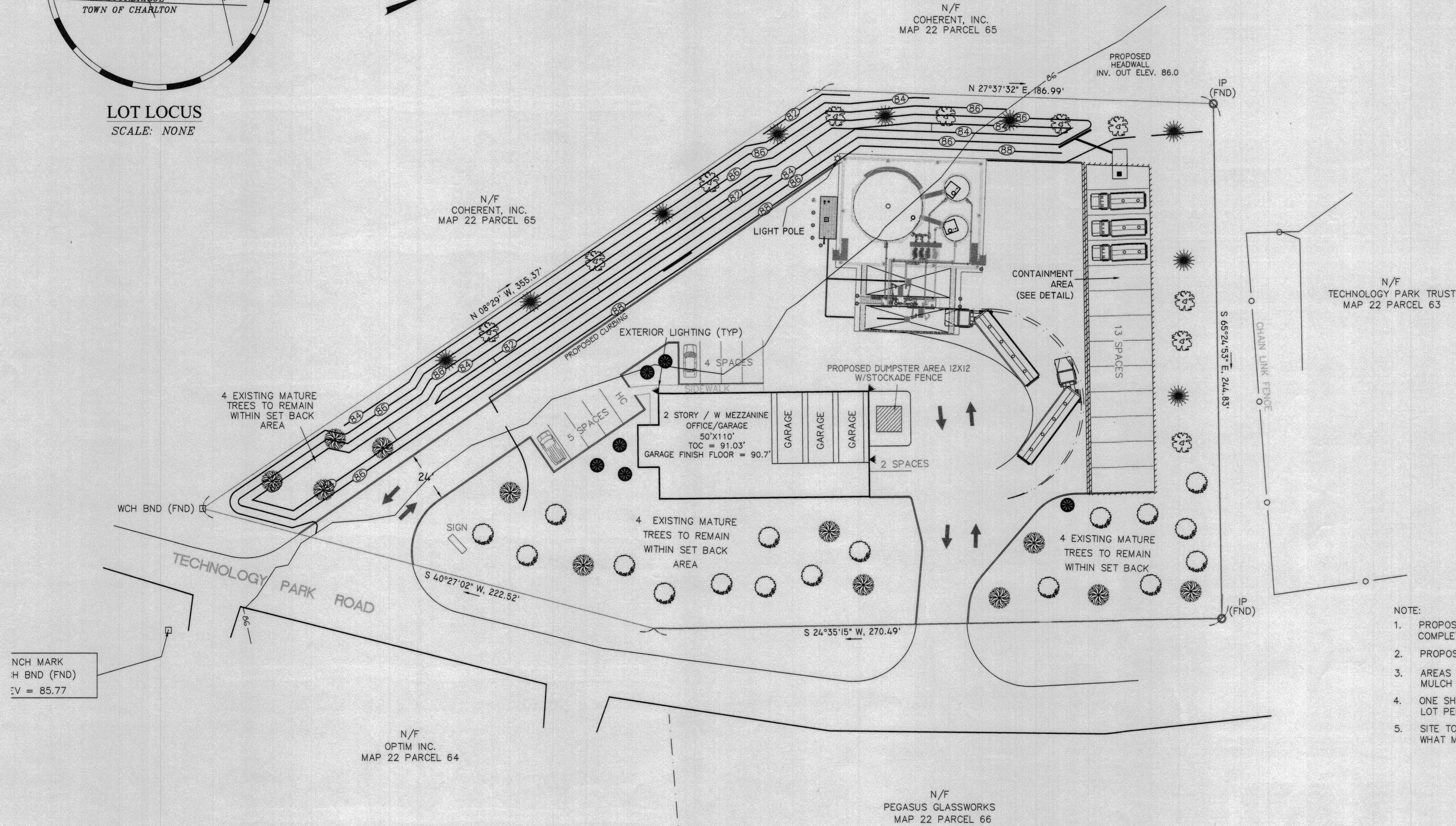
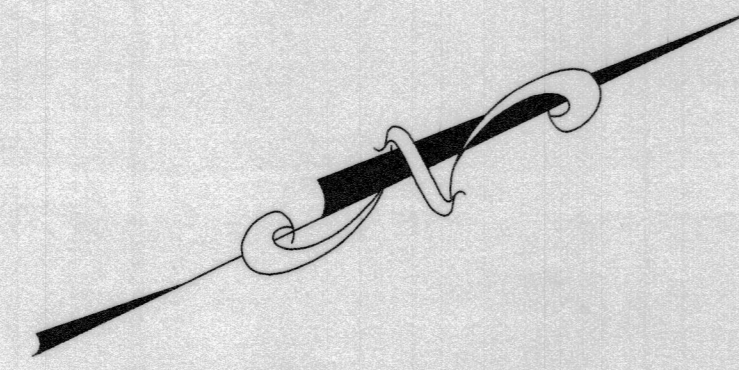


STURBRIDGE ZONING	
ZONE:	INDUSTRIAL PARK
AREA:	2 ACRES
FRONTAGE:	300'
FRONT YARD:	60'
SIDE YARD:	30'
REAR YARD:	30'
BLDG HEIGHT:	35'
MAX. LOT COVERAGE:	33%
MAX IMPERVIOUS SURFACE:	70%



LOT LOCUS
SCALE: NONE



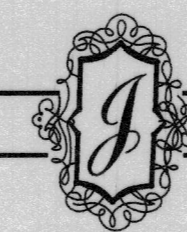
TREE LIST		
SYMBOL	DESCRIPTION	QUANTITY
	VARIOUS EXISTING MATURE TREES	12
	JUNIPERUS VIRGINIANA (EASTERN RED CEDAR)	9
	QUERCUS PALUSTRIS (PIN OAK)	11

SHRUB LIST		
SYMBOL	DESCRIPTION	QUANTITY
	HOLLY SHRUBS	6
	CREeping JUNIPER	16

- NOTE:
1. PROPOSED TREES AND SHRUBS TO BE PLANTED UPON COMPLETION OF SITE WORK.
 2. PROPOSED TREES ARE NOT TO BE LESS THAN 2" CALIPER.
 3. AREAS AROUND REMAINING TREES SHALL BE CLEANED MULCH BASE TO BE INSTALLED AROUND REMAINING TREES.
 4. ONE SHADE TREE PER 40' OF LOT PERIMETER
LOT PERIMETER = 1281/40 = 32 TREES (32 TREES PROVIDED)
 5. SITE TO BE REVIEWED BY TREE WARDEN TO DETERMINE WHAT MATURE TREES CAN BE SAVED PRIOR TO CONSTRUCTION.

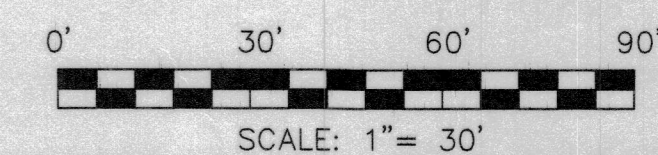
PROJ: TECHRD DWG: PIONEER-R-1

ORIGINAL	REVISIONS						
DATE	BY	REV.	DATE	DESCRIPTION	MADE	CHK'D	APV'D
11/17/03	JAT	1	12/2/03	ADDITIONAL PLANTINGS	JAT	LSJ	
	LSJ			NORTH ARROW, LOCUS			
	LSJ	3	5/5/04	TITLE BLOCK	ARB	LSJ	
		4	5/22/04	FOR CONSTRUCTION	ARB	LSJ	



JALBERT ENGINEERING, INC.
CIVIL ENGINEERS & SURVEYORS
54 Main Street
Sturbridge, Massachusetts 01566-1244
Telephone: (508) 347-5136 • Toll Free: 1-800-339-5136
Fax: (508) 347-7962

PROPOSED LANDSCAPE LIGHTING PLAN
PIONEER OIL CO., INC
63 TECHNOLOGY PARK ROAD
STURBRIDGE, MASSACHUSETTS



PLAN DATE: 11/17/03
DWG NUMBER
03543
(4)
SHEET 4 OF 5