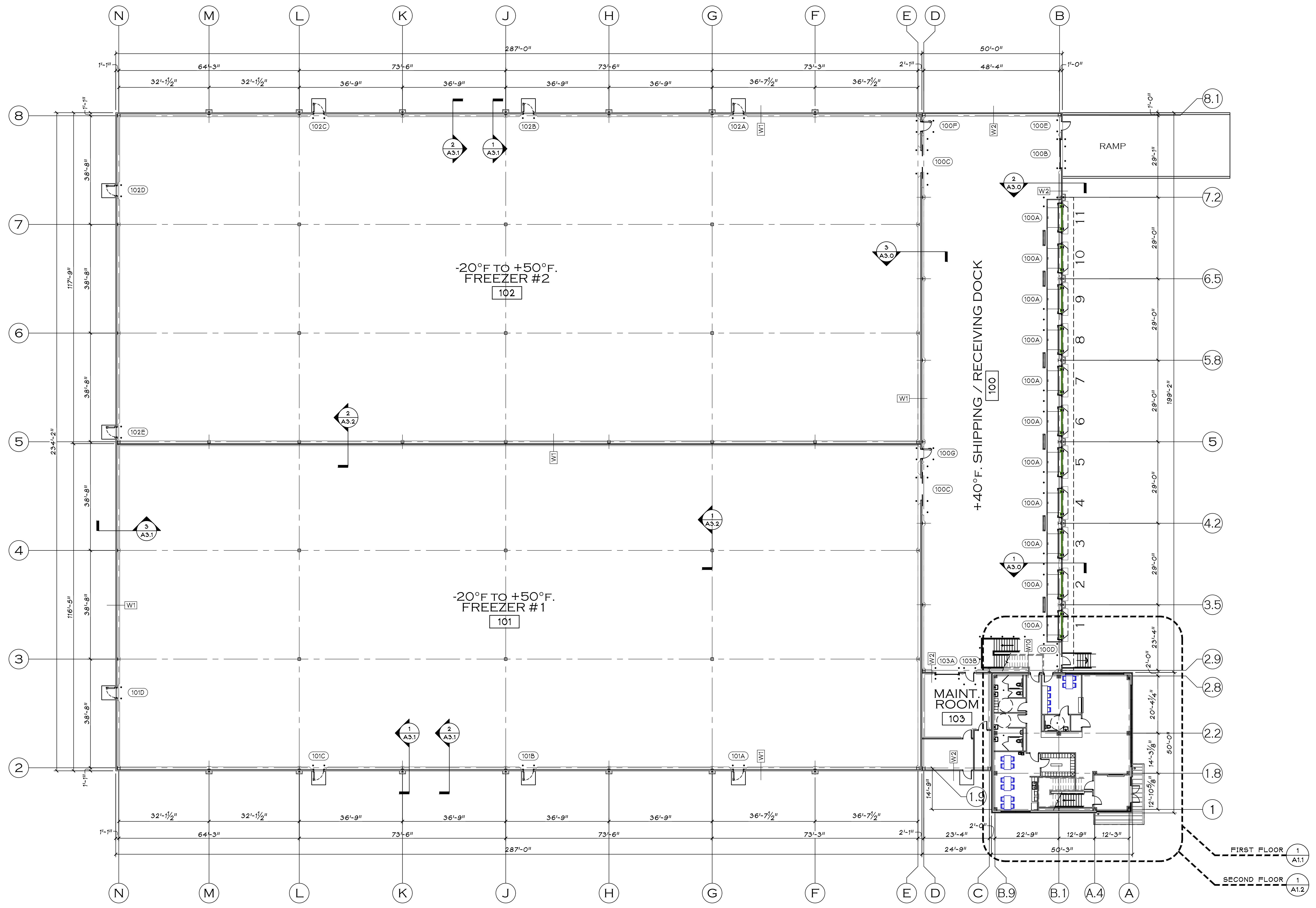


WALL TYPES LEGEND

- W1 5" 26 GA. STEEL-FACED URETHANE WALL PANEL
- W2 4" 26 GA. STEEL-FACED URETHANE WALL PANEL
- W3 3" 26 GA. STEEL-FACED URETHANE WALL PANEL
- W4 6" x 20 GA. METAL STUDS @ 16" O.C. TO DECK w/ 3 1/2" FG BATT INSULATION AND 5/8" GYPSUM BOARD EACH SIDE
- W5 3 5/8" x 25 GA. METAL STUDS @ 16" O.C. TO DECK w/ 3 1/2" FG BATT INSULATION AND 5/8" GYPSUM BOARD EACH SIDE
- W6 3 5/8" x 25 GA. METAL STUDS @ 16" O.C. TO DECK w/ 3 1/2" FG BATT INSULATION AND 5/8" TYPE "X" GYPSUM BOARD 1 LAYER EACH SIDE FOR ONE HOUR WALL
- W7 3 5/8" x 25 GA. METAL STUDS @ 16" O.C. TO DECK w/ 5/8" GYPSUM BOARD EACH SIDE
- W8 PLUMBING CHASE: 3 5/8" x 25 GA. METAL STUDS @ 16" O.C. TO DECK w/ 3 1/2" FG BATT INSULATION AND 5/8" GYPSUM BOARD EACH ROOM SIDE
- W9 3" METAL PANEL OVER TYVEC WRAP & 1/2" DENSGLASS SHEATHING ON 6" METAL STUDS @ 16" OC. AND 1 LAYER GYP BD.
- W10 4" INSULATED METAL PANEL OVER 6" METAL STUDS @ 16" OC. & 3 1/2" FG. BATT INSULATION AND 1 LAYER GYP BD. OVER 4 MIL VAPOR BARRIER
- W11 3" INSULATED METAL PANEL OVER 3 5/8" x 25 GA. METAL STUDS @ 16" OC. AND 1 LAYER GYP BD. OVER 4 MIL VAPOR BARRIER
- W12 3 5/8" x 25 GA. METAL STUDS @ 16" O.C. TO DECK w/ 5/8" GYPSUM BOARD ONE SIDE ONLY
- W13 7 5/8" CMU - 3" PANEL - 3 5/8" x 25 GA. METAL STUDS @ 16" O.C.
- W14 7 5/8" CMU
- W15 7 5/8" CMU - 3" PANEL - (2 HR. RATED)
- W16 7 5/8" CMU - 4" PANEL - (2 HR. RATED)
- W17 3 5/8" x 25 GA. METAL STUDS @ 16" O.C. TO DECK w/ 5/8" TYPE "X" GYPSUM BOARD 1 LAYER EACH SIDE FOR ONE HOUR WALL
- W18 7" THERMAL SAFE 2-HOUR FIRE RESISTANT INSULATED METAL PANEL
- W19 4" INSULATED METAL PANEL OVER 6" METAL STUDS @ 16" OC. & 3 1/2" FG. BATT INSULATION AND 1 LAYER GYP BD. OVER 4 MIL VAPOR BARRIER



OVERALL FLOOR PLAN
SCALE: 1/16" = 1'-0"

CERTIFICATION:

T1 DESIGN BUILD
4218 Hobson Court, Suite B
Fort Wayne, IN 46815
Phone: 260-424-2222
www.t1cd.com

34 AIRPORT NORTH OFFICE PARK
FORT WAYNE, IN 46825
PHONE: 317-747-1111 FAX: 317-747-8888

PRANGER GROUP INC.
ARCHITECTURE • ENGINEERING

PROJECT: NEW FACILITY FOR:

RLS Complete
90 CHARLTON ROAD
STURBRIDGE, MA 01566

DRAWING TITLE:
OVERALL FLOOR PLAN

REVISIONS:

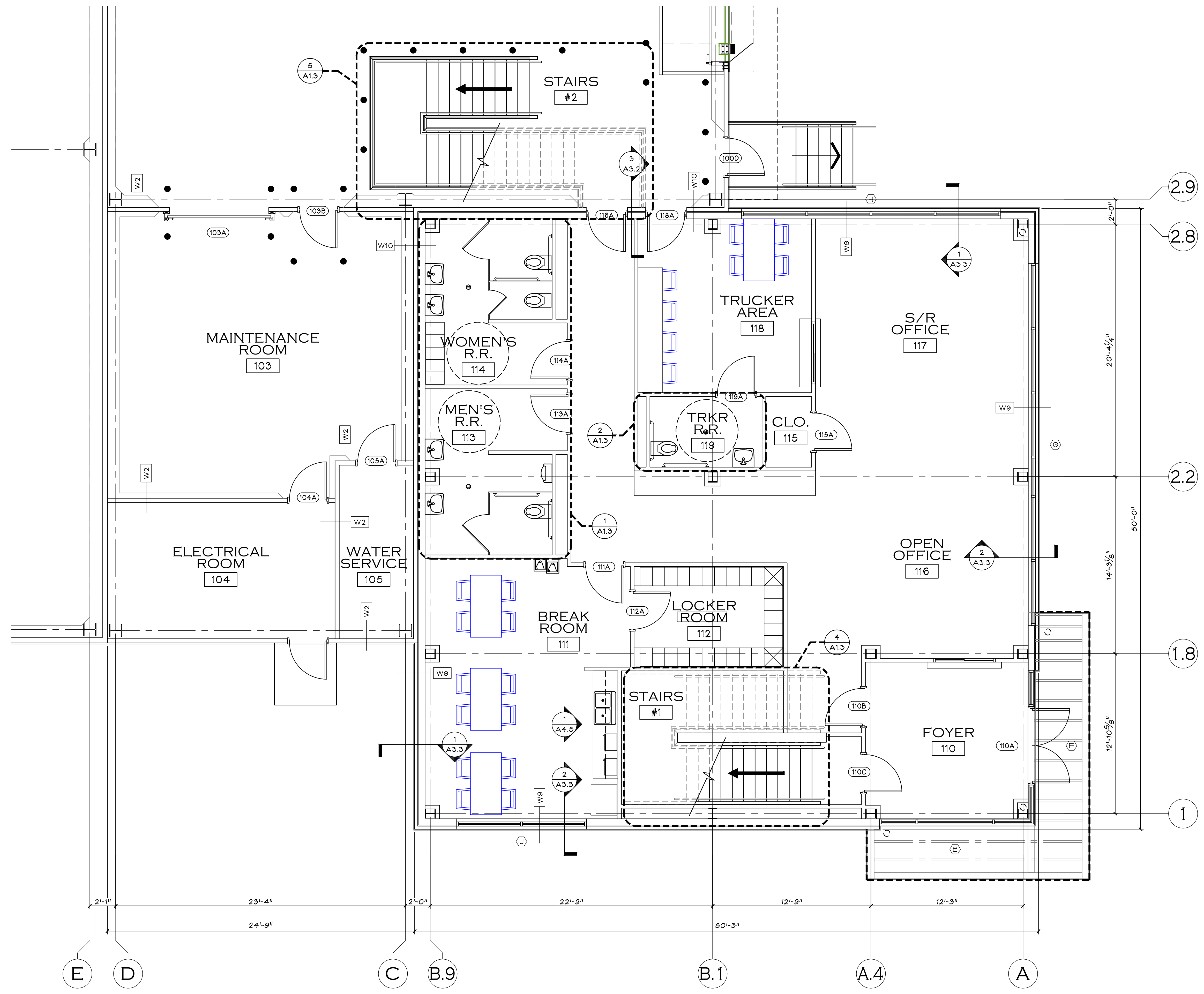
NO.	DATE	DESCRIPTION

DRAWN BY: TIDB
DATE: 12/16/2020
JOB NO: 180155
CAD FILE: 180155-A1.0.DWG
SHEET:

A1.0

WALL TYPES LEGEND

- W1 5" 26 GA. STEEL-FACED URETHANE WALL PANEL
- W2 4" 26 GA. STEEL-FACED URETHANE WALL PANEL
- W3 3" 26 GA. STEEL-FACED URETHANE WALL PANEL
- W4 6" x 20 GA. METAL STUDS @ 16" O.C. TO DECK W/ 3 1/2" FG BATT INSULATION AND 5/8" GYPSUM BOARD EACH SIDE
- W5 3 5/8" x 25 GA. METAL STUDS @ 16" O.C. TO DECK W/ 3 1/2" FG BATT INSULATION AND 5/8" GYPSUM BOARD EACH SIDE
- W6 3 5/8" x 25 GA. METAL STUDS @ 16" O.C. TO DECK W/ 3 1/2" FG BATT INSULATION AND 5/8" TYPE "X" GYPSUM BOARD 1 LAYER EACH SIDE FOR ONE HOUR WALL
- W7 3 5/8" x 25 GA. METAL STUDS @ 16" O.C. TO DECK W/ 5/8" GYPSUM BOARD EACH SIDE
- W8 PLUMBING CHASE: 3 5/8" x 25 GA. METAL STUDS @ 16" O.C. TO DECK W/ 3 1/2" FG BATT INSULATION AND 5/8" GYPSUM BOARD EACH ROOM SIDE
- W9 3" METAL PANEL OVER TYVEC WRAP & 1/2" DENSGLASS SHEATHING ON 6" METAL STUDS @ 16" OC. AND 1 LAYER GYP BD.
- W10 4" INSULATED METAL PANEL OVER 6" METAL STUDS @ 16" OC. & 3 1/2" FG. BATT INSULATION AND 1 LAYER GYP BD. OVER 4 MIL VAPOR BARRIER
- W11 3" INSULATED METAL PANEL OVER 3 5/8" x 25 GA. METAL STUDS @ 16" OC. AND 1 LAYER GYP BD. OVER 4 MIL VAPOR BARRIER
- W12 3 5/8" x 25 GA. METAL STUDS @ 16" O.C. TO DECK W/ 5/8" GYPSUM BOARD ONE SIDE ONLY
- W13 7 5/8" CMU - 3" PANEL - 3 5/8" x 25 GA. METAL STUDS @ 16" O.C.
- W14 7 5/8" CMU
- W15 7 5/8" CMU - 3" PANEL - (2 HR. RATED)
- W16 7 5/8" CMU - 4" PANEL - (2 HR. RATED)
- W17 3 5/8" x 25 GA. METAL STUDS @ 16" O.C. TO DECK W/ 5/8" TYPE "X" GYPSUM BOARD 1 LAYER EACH SIDE FOR ONE HOUR WALL
- W18 7" THERMAL SAFE 2-HOUR FIRE RESISTANT INSULATED METAL PANEL
- W19 4" INSULATED METAL PANEL OVER 6" METAL STUDS @ 16" OC. & 3 1/2" FG. BATT INSULATION AND 1 LAYER GYP BD. OVER 4 MIL VAPOR BARRIER



1 ENLARGED FIRST FLOOR OFFICE PLAN
SCALE: 1/4" = 1'-0"

CERTIFICATION:

T1 DESIGN BUILD
4218 Hobson Court, Suite B
Fort Wayne, IN 46815
Phone: 260-424-2222
www.t1cold.com

34 AIRPORT NORTH OFFICE PARK
FORT WAYNE, IN 46825
PHONE: 260-747-0401 FAX: 260-844-8808

PRANGER GROUP INC.
ARCHITECTURE • ENGINEERING

PROJECT: NEW FACILITY FOR:

RLS Complete
90 CHARLTON ROAD
STURBRIDGE, MA 01566

DRAWING TITLE:
ENLARGED FIRST FLOOR OFFICE PLAN

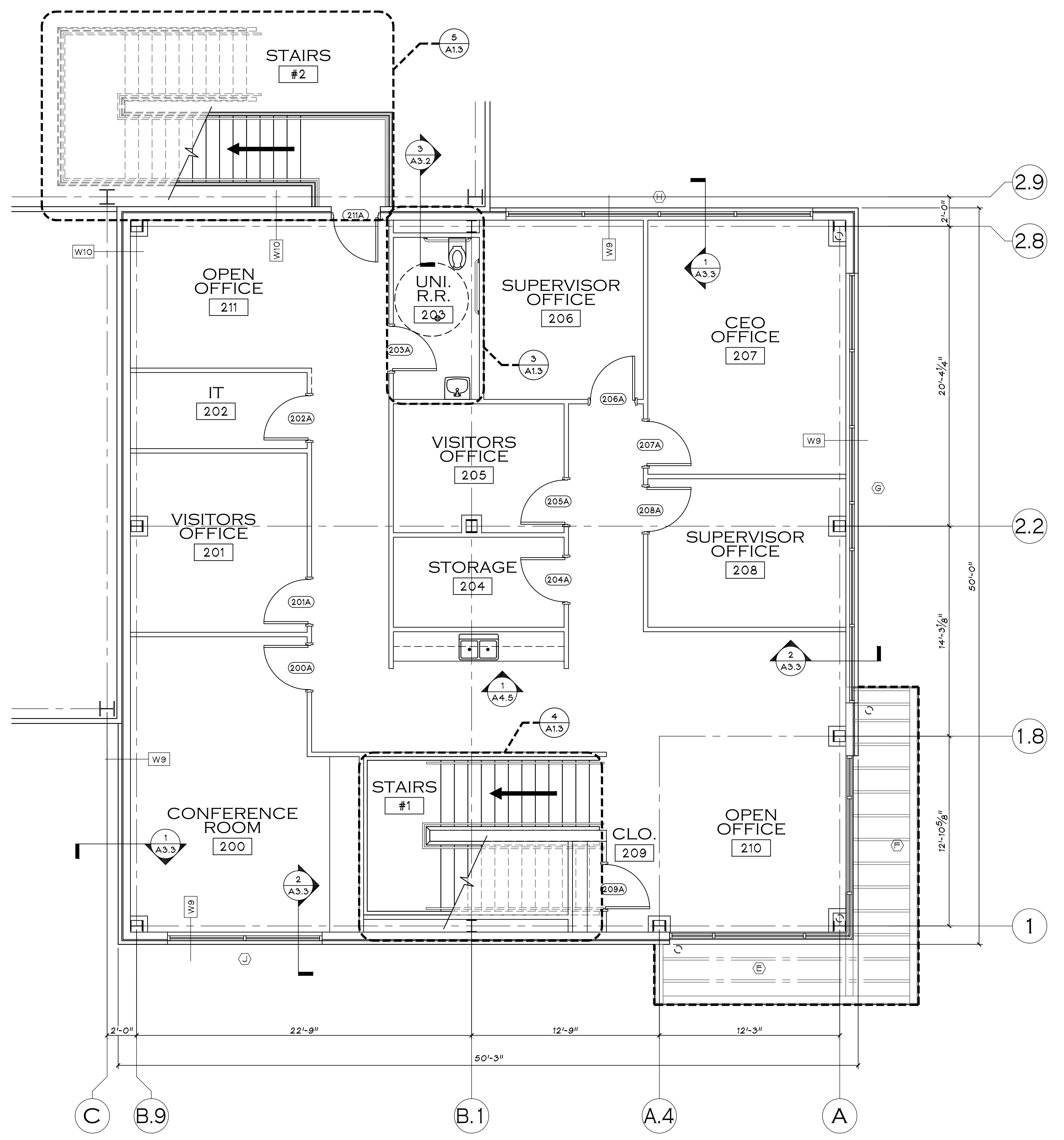
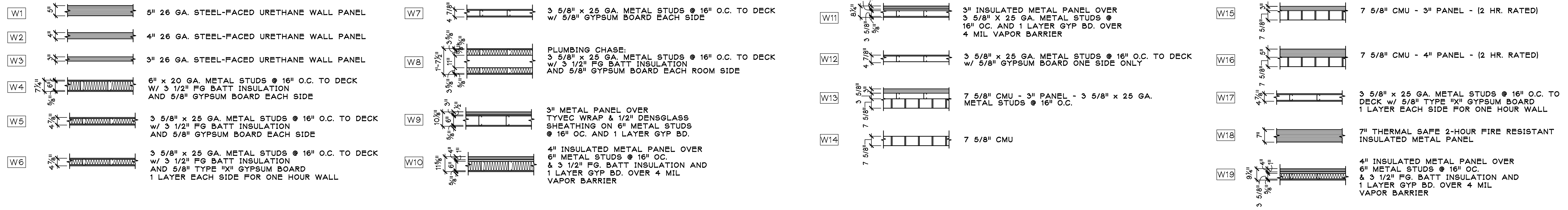
REVISIONS:

NO.	DESCRIPTION

DRAWN BY: TIDB
DATE: 12/16/2020
JOB NO: 180155
CAD FILE: 180155-A1.0.DWG
SHEET:

A1.1

WALL TYPES LEGEND



1 ENLARGED SECOND FLOOR OFFICE PLAN
 SCALE: 1/4" = 1'-0"

CERTIFICATION:

4218 Hobson Court, Suite B
 Fort Wayne, IN 46815
 Phone: 260-424-2222
 www.t1cold.com

34 AIRPORT NORTH OFFICE PARK
 FORT WAYNE, IN 46825
 PHONE: 260-424-2222

 PRANGER GROUP INC.
 ARCHITECTURE • ENGINEERING

PROJECT: NEW FACILITY FOR:

 90 CHARLTON ROAD
 STURBRIDGE, MA 01566

DRAWING TITLE:
ENLARGED SECOND FLOOR OFFICE PLAN

REVISIONS:

NO.	DESCRIPTION

DRAWN BY: TIDB
 DATE: 12/16/2020
 JOB NO: 180155
 CAD FILE: 180155-A1.0.DWG
 SHEET:

A1.2