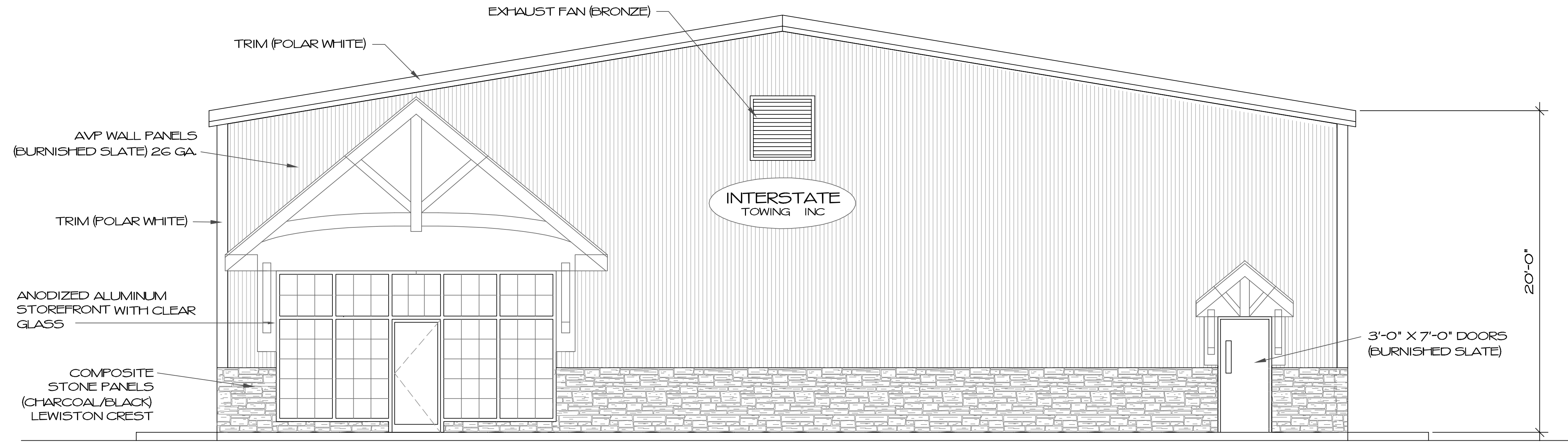


EXTERIOR FINISHES

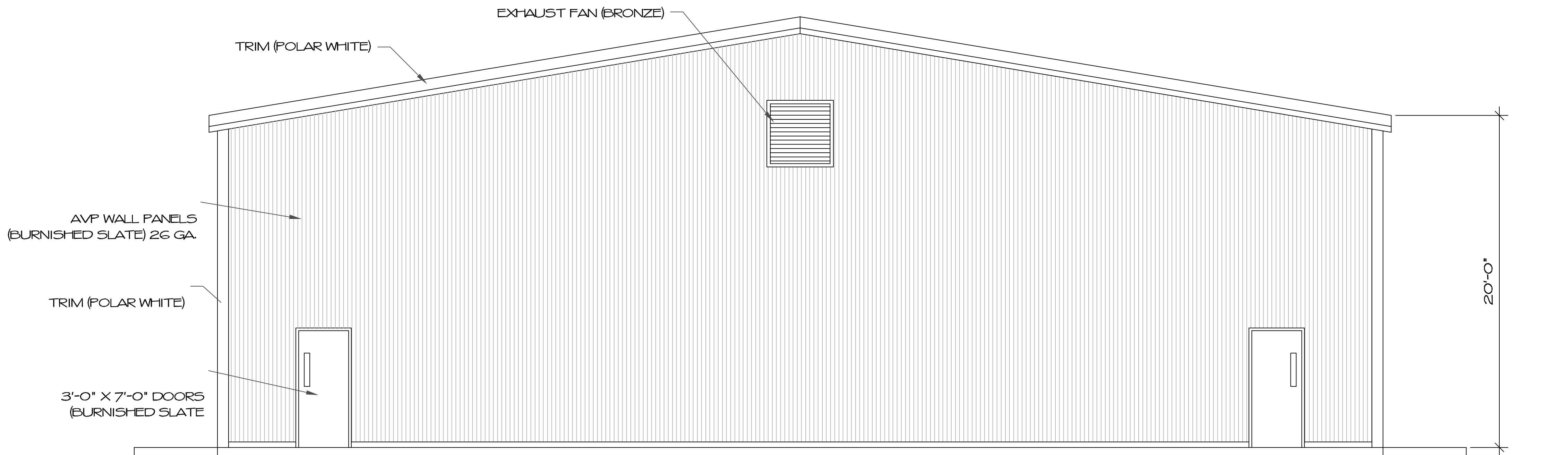
PRE-ENGINEERED BUILDING BY METALLIC BUILDING SYSTEMS

1. ROOF: 24 GAUGE DOUBLE-LOCK GALVALUME PLUS
2. WALL PANELS: AVP 26 GA. SIGNATURE 200 IN BURNISHED SLATE
3. TRIM AND GUTTERS TO BE SIGNATURE 200 IN POLAR WHITE. DOWNSPOUTS TO BE SIGNATURE 200 IN BURNISHED SLATE.
4. ALUMINUM STOREFRONT SYSTEM AND WINDOWS TO BE CLEAR ANODIZED FINISH WITH CLEAR GLASS.
5. COMPOSITE STONE PANELS: TANDO SHADOW RIDGE LEWISTON CREST
6. HOLLOW METAL PASS DOORS TO BE BURNISHED SLATE
7. OVERHEAD DOORS TO BE WHITE
8. LOUVERS TO BE BRONZE ALUMINUM.



SOUTH ELEVATION

1/4"=1'-0"



NORTH ELEVATION

1/4"=1'-0"

ROY S. BROWN ARCHITECTS

85 CHILSON ROAD
WILBRHAM, MA 01095
P 413.576.2360
F 413.576.2360
email: RSB@GMAIL.COM

CHECK	REVISIONS	DATE
DESIGN MFG		
PROJ. MANAGER		
ARCHITECT		
DATE: 9/10/2022		
PROJECT No. 21-08-03		

INTERSTATE TOWING
STRURBRIDGE FACILITY
698 MAIN STREET
STRURBRIDGE, MA 01518