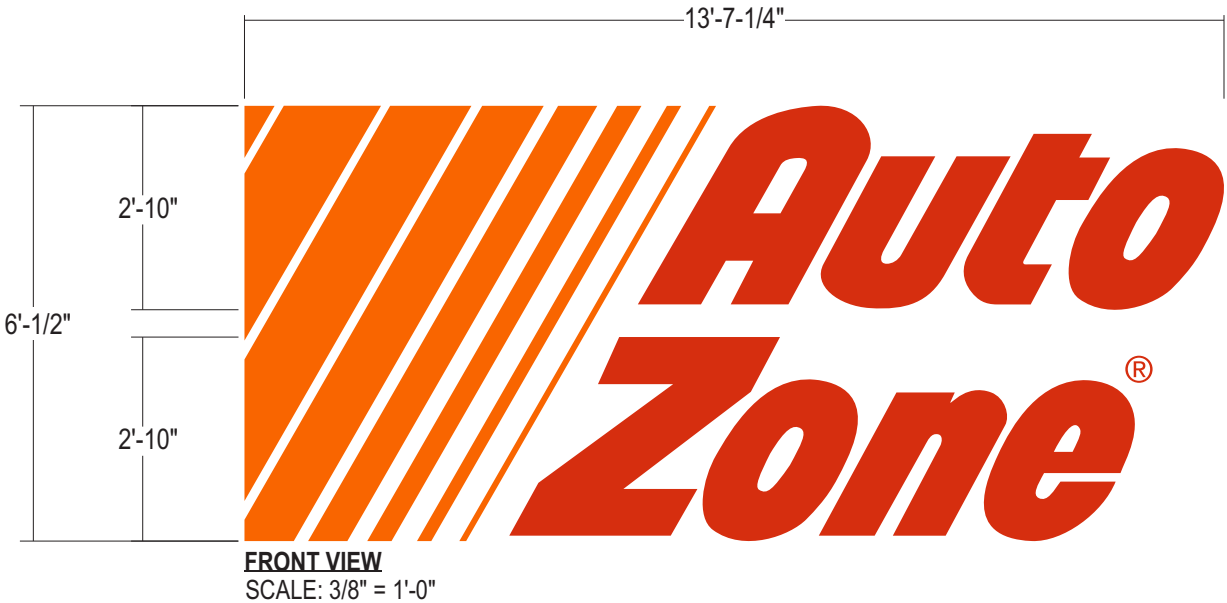


34LS EXTERNALLY ILLUMINATED CHANNEL LETTERS w/ STRIPES (QTY 1)

SQUARE FOOTAGE: 82.15

APPROVED

By Laura Beth Myers at 12:19 pm, May 18, 2022



EXTERNALLY ILLUMINATION



SPECIFICATIONS

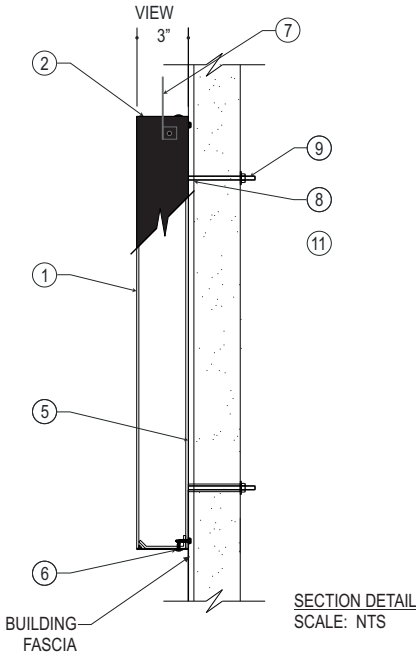
- .125 ALUMINUM FACES (WHITE INSIDE) / PAINTED P-9, P-10
- .063 ALUMINUM RETURNS / PAINTED P-8 / WELDED TO ALUMINUM FACE
- AUTOZONE LETTERS EXTERNALLY ILLUMINATED w/ IP66 WHITE LED LIGHT ENGINE
- AUTOZONE STRIPES EXTERNALLY ILLUMINATED w/ IP66 WHITE LED LIGHT ENGINE
- .150 WHITE POLYCARBONATE BACK TEK SCREWED TO ALUMINUM TABS
- .125 ALUMINUM TABS FASTENED TO RETURNS PAINTED P-11 w/ COUNTER SUNK SCREWS PAINTED P-8
- WHITE ALUMINUM TAB w/ ® VINYL APPLIED FIRST SURFACE V-3
- SILICONE AROUND HOLES
- REFER TO ENGINEERING FOR MOUNTING REQUIREMENTS / INSTALLER TO PROVIDE HARDWARE

NOTES

- ALL VISIBLE SCREW HEADS & POP RIVETS PAINTED P-8

COLORS/FINISHES

- |  |      |  |
|--|------|--|
|  | P-7  | SW 6091 RELIABLE WHITE                         |
|  | P-8  | GLOSS BLACK                                    |
|  | P-9  | TO MATCH PMS 165 ORANGE                        |
|  | P-10 | TO MATCH PMS 485 RED                           |
|  | P-11 | MP HR WHITE                                    |
|  | V-3  | ARLON 143 POPPY RED HI PERF. TRANSLUCENT VINYL |



NIGHT VIEW  
SCALE: NTS



WALL SYSTEMS	APPROVED FASTENER	
WOOD, CONCRETE BLOCK OR EIFS	3/8" THREADED ROD THRU-BOLT w/ NUT & WASHER	
METAL OR EIFS	3/8" THREADED ROD THRU-BOLT w/ TOGGLE ANCHOR	
CONCRETE, MASONRY AND BRICK - EMBED A MINIMUM OF 3"	3/8" DIA. LAG w/ 3/8" SHIELD & WASHER	
TILT-UP CMU - EMBED A MINIMUM OF 3"	3/8" DIA RED HEAD LARGE DIAMETER TAPCON FASTENER	

\*FOR ALL OTHER WALL CONDITIONS NOT LISTED ON THIS APPROVED FASTENER SCHEDULE, INSTALLER IS TO DETERMINE A SUITABLE METHOD OF ATTACHMENT FOR SIGNAGE AND OBTAIN APPROVAL FROM JONES SIGN.

\*IF INSTALLER IS UNSURE OF A METHOD, JONES SIGN MUST BE CONSULTED. FOR ALL ATTACHMENT METHODS, INSTALLER MUST ADHERE TO GUIDELINES ON USE AND SITE PREPARATION RECOMMENDED BY FASTENER MANUFACTURER.

**JONES SIGN**  
Your Vision. Accomplished.  
WWW.JONESSIGN.COM

JOB #: 268925-R2

DATE: 04.20.2022

DESIGNER: ZT

SALES REP: XXXX

PROJ MGR: XXXX

REV.	DATE	BY	DESCRIPTION
1	04.25.22	ZT	INCREASED LETTERS SIZE TO 38" W/ LEFT STRIPES
2	05.18.22	ZT	REVISED CHANNEL LETTERS SIZE TO 34" W/ LEFT STRIPES
3	00.00.00	XX	XXXX
4	00.00.00	XX	XXXX
5	00.00.00	XX	XXXX
6	00.00.00	XX	XXXX
7	00.00.00	XX	XXXX
8	00.00.00	XX	XXXX
9	00.00.00	XX	XXXX
10	00.00.00	XX	XXXX

CLIENT APPROVAL

DATE

LANDLORD APPROVAL

DATE

QC



Site # XXXX  
STURBRIDGE,MA

DESIGN PHASE:CONCEPTUAL

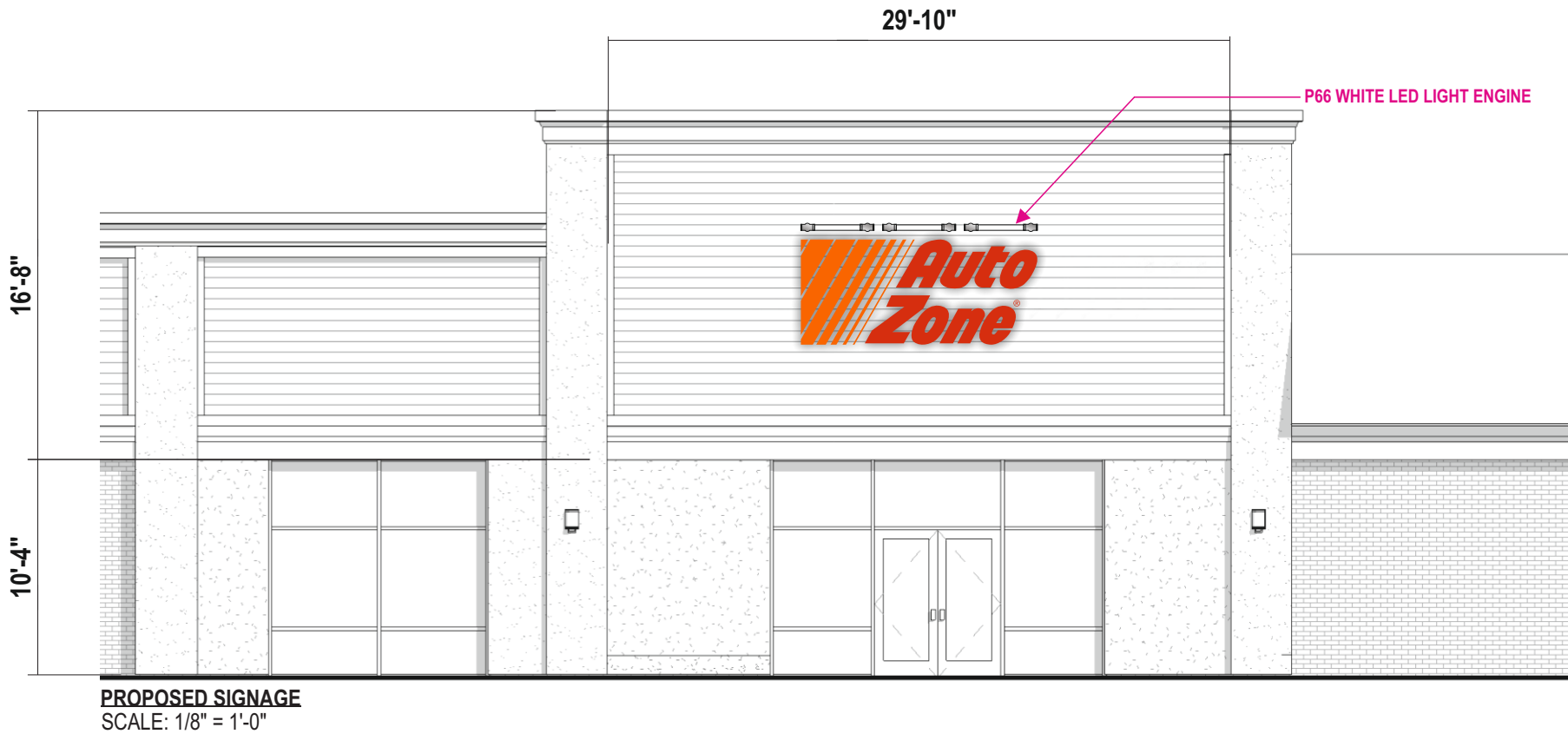
SHEET NUMBER

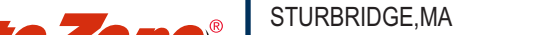
1.0

34LS EXTERNALLY ILLUMINATED CHANNEL LETTERS w/ STRIPES (QTY 1)

SQUARE FOOTAGE: 82.15

APPROVED  
By Laura Beth Myers at 12:19 pm, May 18, 2022



<div>JONES SIGN</div> <div>Your Vision. Accomplished.</div> <div>WWW.JONESSIGN.COM</div>	<div>JOB #: 268925-R2</div> <div>DATE: 04.20.2022</div> <div>DESIGNER: ZT</div> <div>SALES REP: XXXX</div> <div>PROJ MGR: XXXX</div>	REV.	DATE	BY	DESCRIPTION	CLIENT APPROVAL	DATE		Site # XXXX	SHEET NUMBER
		1	04.25.22	ZT	INCREASED LETTERS SIZE TO 38" W/ LEFT STRIPES	LANDLORD APPROVAL	DATE		STURBRIDGE,MA	
		2	05.18.22	ZT	REVISED CHANNEL LETTERS SIZE TO 34" W/ LEFT STRIPES					
		3	00.00.00	XX	XXXX					QC
4	00.00.00	XX	XXXX							
5	00.00.00	XX	XXXX							
6	00.00.00	XX	XXXX							
7	00.00.00	XX	XXXX							
8	00.00.00	XX	XXXX							
9	00.00.00	XX	XXXX							
10	00.00.00	XX	XXXX		DESIGN PHASE:CONCEPTUAL	1.0				

This is an original, unpublished drawing by Jones Sign Co., Inc. It is for your personal use in conjunction with a project being planned for you by JONES SIGN. It is not to be shown to anyone outside of your organization, nor is it to be used, reproduced, copied or exhibited in any fashion. Use of this design or the salient elements of this design in any sign done by any other company, without the express written permission of JONES SIGN, is forbidden by law and carries a civil forfeiture of up to 25% of the purchase price of the sign. JONES SIGN will endeavor to closely match colors, including PMS, where specified. We cannot guarantee exact matches due to varying compatibility of surface materials and paints used. All sizes and dimensions are illustrated for client's conception of project and are not to be understood as being exact size or exact scale.