





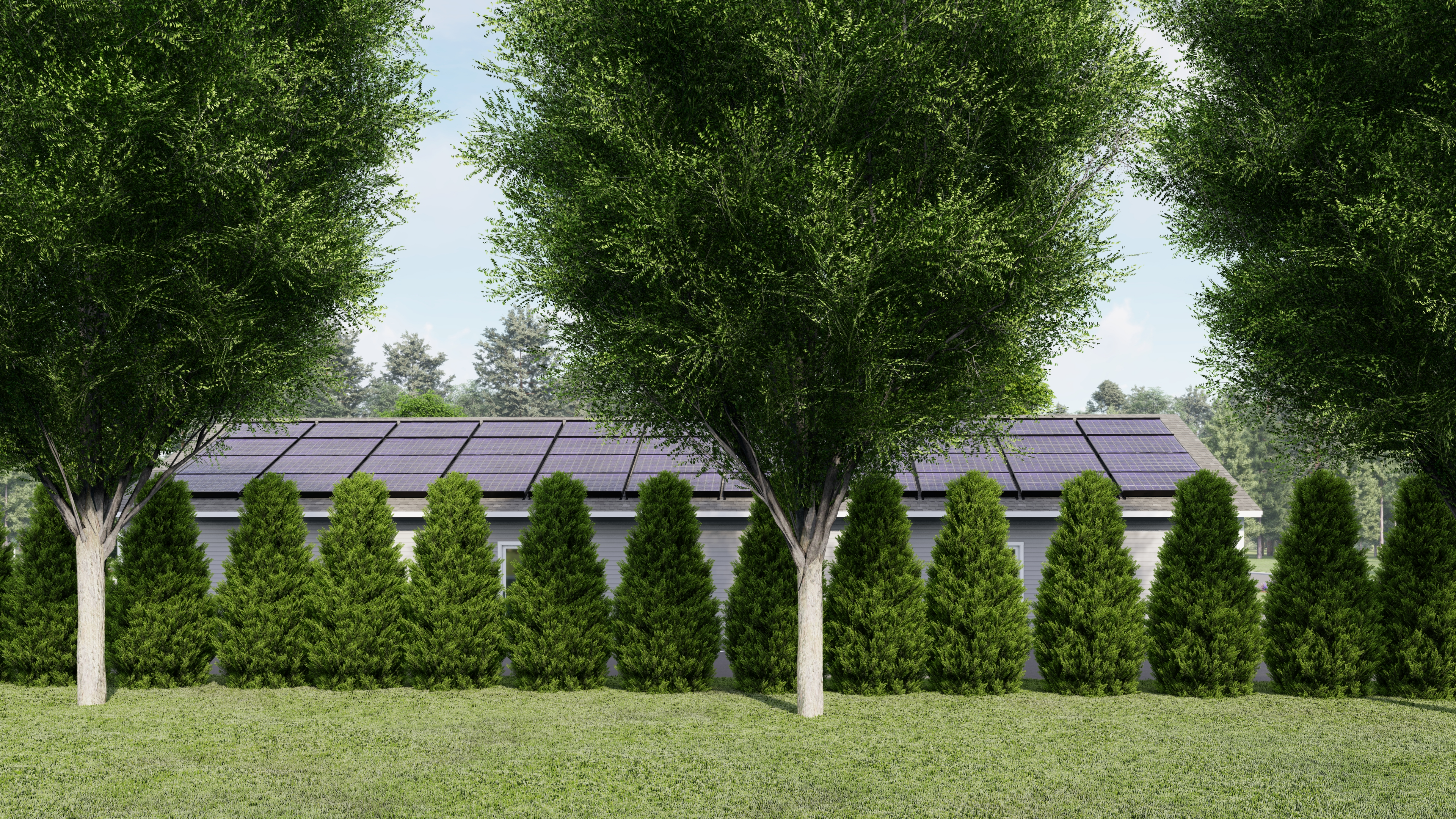
LOCAL ROOTS
CANNABIS CRAFTED

DREVEN
ATHLETIC PERFORMANCE



LOCAL ROOTS
CANNABIS CRAFTED

DREVEN
ATHLETIC PERFORMANCE





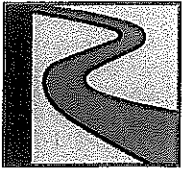
365

 **LOCAL ROOTS**
LocalRoots.cc

DREVEN
ATHLETIC PERFORMANCE

 **LOCAL ROOTS**
CANNABIS CRAFTED

DREVEN
ATHLETIC PERFORMANCE



Local Roots – Landscape Narrative

The landscape approach to the development of the Local Roots site is to go beyond simply complying with the Zoning By-law.

As the site is currently mostly paved and undeveloped, there is little existing significant vegetation to preserve. The exception is on the west side of the site (adjacent to Friendly's), where there are two Eastern White Pines of significant size which will be retained to buffer the proposed development to the Friendly's parking lot. Additional plantings along this edge are not advised, as the roots of the Pine trees are surficial and probably extensive, and would interfere with the success of any new plantings.

The Route 20/Main Street edge, which currently has no landscape plantings, will consist of a 30 foot wide planted strip, including shade trees, shrubs, and a grass strip. A new monument identification sign will be supplemented with decorative plantings around its base.

The east side of the site will have a 10 foot wide planted strip of Green Giant Arborvitae and Japanese Zelkova trees, to provide both a year round evergreen screen and tall canopy trees.

The south side of the site will be planted with a variety of evergreen trees which will supplement a 6' tall PVC solid vinyl fence to screen existing neighbors.

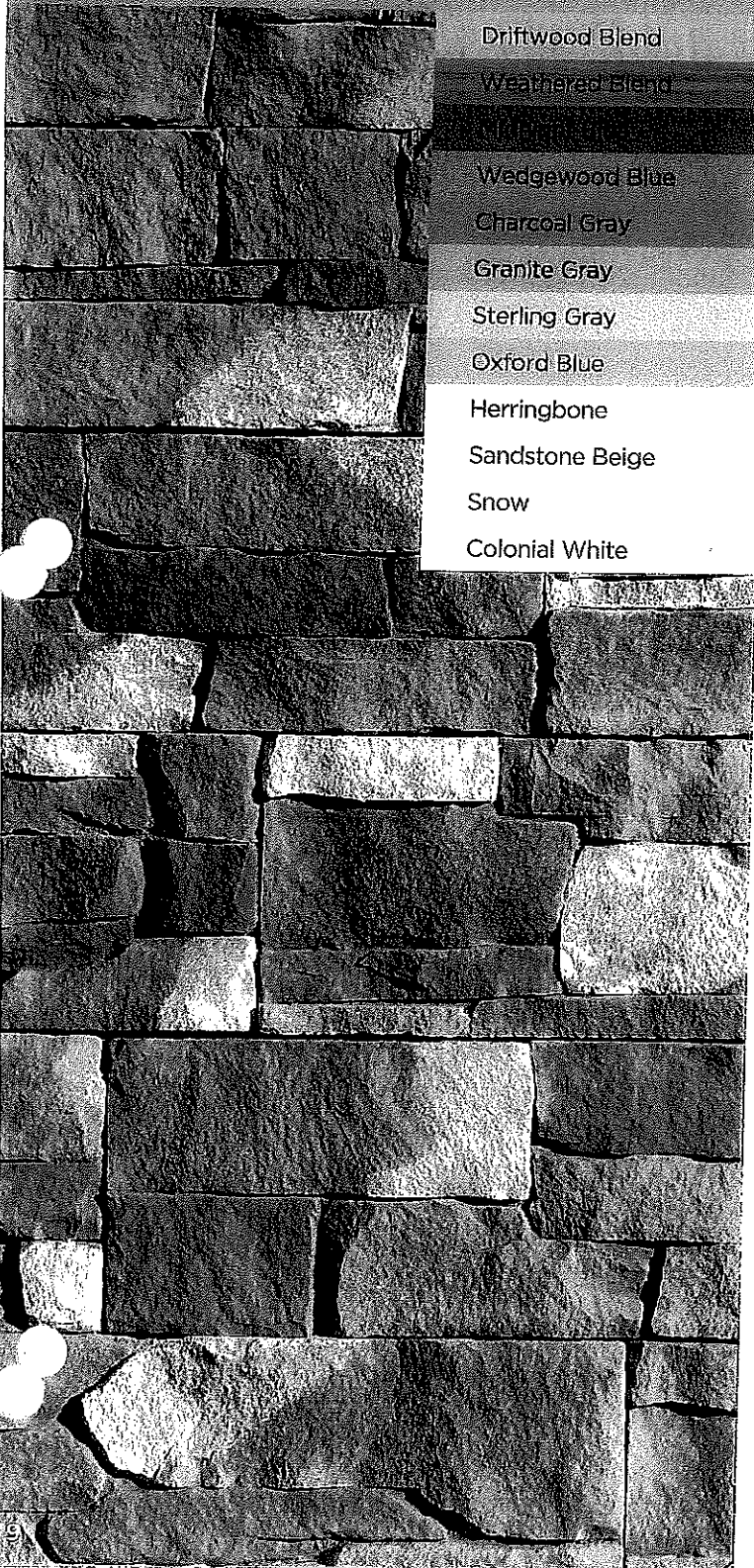
Intermediate parking islands at the perimeter of the parking lot will be planted with London Planetrees, a large shade tree, and low plantings. These in addition to two additional Oak trees along the west side of the parking lot will provide shade to parked cars and will reduce the urban heat island effect, especially due to the late afternoon summer sun.

Around the new building, 30" wide planting beds will contain a variety of flowering and evergreen shrubs and perennials for year-round interest, and color in the growing season. End islands at the south corners of the building will be planted with shrubs and ornamental grasses which will tolerate snow and salt in the winter.

Complement your siding color.

Adirondack Snowfall

With hues of gray, adirondack snowfall matches best with siding in whites, blues and greys.



Driftwood Blend

Weathered Blend

Wedgewood Blue

Charcoal Gray

Granite Gray

Sterling Gray

Oxford Blue

Herringbone

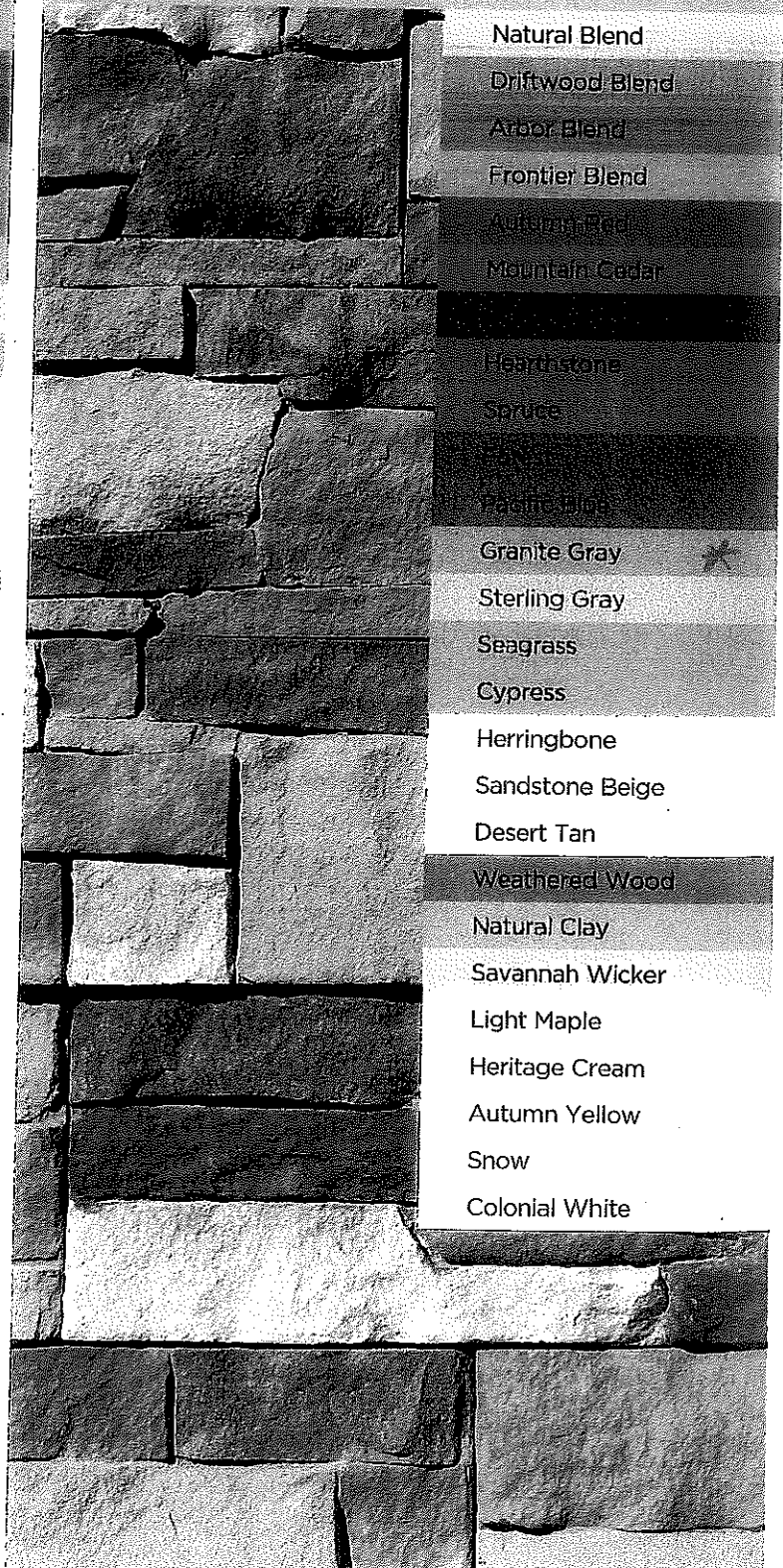
Sandstone Beige

Snow

Colonial White

Appalachian Twilight

With various grays and browns, appalachian twilight works well with an extensive palette of siding colors.



Natural Blend

Driftwood Blend

Arbor Blend

Frontier Blend

Autumn Red

Mountain Cedar

Hearthstone

Spruce

Black

Pacific Blue

Granite Gray

Sterling Gray

Seagrass

Cypress

Herringbone

Sandstone Beige

Desert Tan

Weathered Wood

Natural Clay

Savannah Wicker

Light Maple

Heritage Cream

Autumn Yellow

Snow

Colonial White

Panelized system.

Install our innovative design

Moisture management to protect your home



CertainTeed STONEfaçade™ LedgeStone features the industry's only fully-integrated rainscreen, providing additional structural support and ample drainage from top to bottom for outstanding moisture management and protection of your most important investment. Our rainscreen prevents potential structural damage and mold, a common occurrence when masonry products are installed without a well-defined drainage space.

3/8" Rainscreen

Stone veneer panels for easy installation

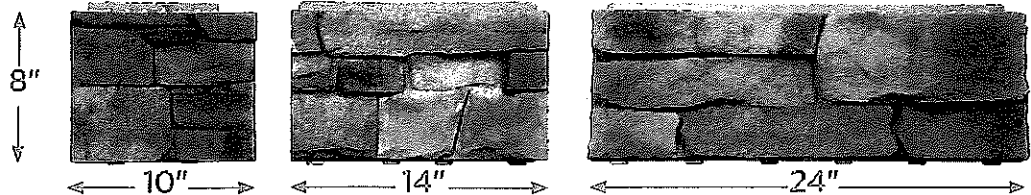


Your siding contractor will install it quickly and cleanly, saving time and money on your installation. The STONEfaçade system includes components that are designed to work together seamlessly, integrating with new or existing exterior cladding for a beautiful finished appearance:



Panelized

3 panel widths are randomly pre-mixed in a carton to optimize panel's appearance.



Note: STONEfaçade is suitable for use in two-story exterior applications up to 30' high.

Designed for years of worry-free performance, STONEfaçade requires no sealing, coating or mortar. And unlike actual individual stone and other manufactured stone cladding products, STONEfaçade LedgeStone is an easy-to-install panelized system.



No Mortar

In addition, the unique design of the fully-integrated rainscreen provides moisture management protection for your walls and provides a simplified means of installation.



Easy to Install



Fastening Flange

3/8" Rainscreen

Continuous Support

COLOR HPX™

HIGH PERFORMANCE SIDING & TRIM

**EXTRAORDINARY SELECTION.
EXTREME DURABILITY.
EXPRESS DELIVERY.**

BUILT ON

LP SMARTSIDE™
TRIM & SIDING

COATED WITH



DISTRIBUTED BY



© Photo courtesy of LP Corp.

BUILT ON LP® SMARTSIDE®

With 20 years of successful performance, it's easy to see why LP SmartSide brand is one of the fastest-growing brands of siding materials in the US. All LP SmartSide products are treated to the core through their proprietary SmartGuard process. With four components of protection, this process adds strength and helps LP products withstand impacts, freeze-thaw cycles, high humidity, fungal decay, termites and more.

- Primed cedar grain lap siding
- 16' lengths may mean fewer seams and less waste to haul off the site
- Cuts and works with standard woodworking tools
- Weighs less and resists breakage better in storage and handling
- Handles moisture better than fiber cement alternative
- SmartGuard four component protection (resins, overlay, waxes and zinc borate)
- A 50 year prorated limited warranty with a 5 year 100% labor and material replacement warranty on substrate



PRECISION COATED WITH PPG MACHINE APPLIED COATINGS

Quality Wood Priming applies DuraColor 11M 100% acrylic latex coatings to exacting standards in a factory controlled environment with the ideal level of temperature and humidity.

- 30 year limited finish warranty against excessive fade, peel and flaking and chalk washdown*
- 15 year labor warranty includes first 7 years at 100% labor costs*
- Desirable lower gloss level eggshell sheen
- Excellent paint adhesion, mar resistance and color retention
- Powerful UV protection
- Outstanding flexibility of coating that does not crack under extreme pressure



© Photo courtesy of LP Corp.

EXPRESS DELIVERY FROM COASTAL. STOCKING PREFINISHED CEDAR LAP SIDING & WHITE TRIM.

Coastal Forest Products keeps a high level of inventory of stock colors on the ground and ready for prompt shipment. Don't see the right color? No problem, we have you covered with custom color matching capabilities from Quality Wood Priming in Bow, NH.

- 18 Solid Colors - 3/8" x 6" (4 7/8" exposure) In Stock for prompt delivery
- 3 Stained Colors - 3/8" x 6" (4 7/8" exposure) In Stock for prompt delivery
- 6 Solid Colors - 3/8" x 8" (6 7/8" exposure) In Stock for prompt delivery
- White trim products available for prompt delivery
- Custom colors and other sizes are available

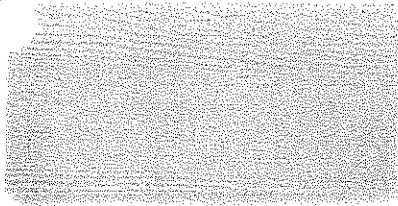


STOCK SOLID COLORS

- 18 stock colors of 6" Cedar Lap Siding
- 6 stock colors of 8" Cedar Lap Siding
- All 16' lengths

COVERAGE CALCULATOR CHART

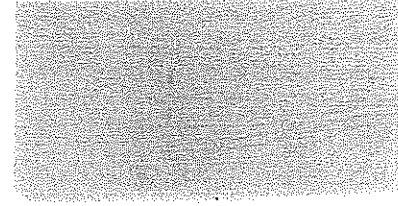
PRODUCT	MAX. EXPOSURE	PIECES PER 100 SQ. FT.
3/8" x 6" x 16' Cedar Lap Siding	4 7/8"	15.4
3/8" x 8" x 16' Cedar Lap Siding	6 7/8"	10.9



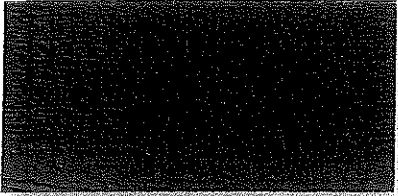
ANTIQUÉ WHITE*
6" LAP



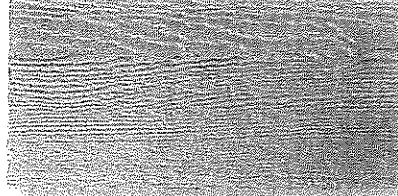
WHITE
6" LAP • 8" LAP



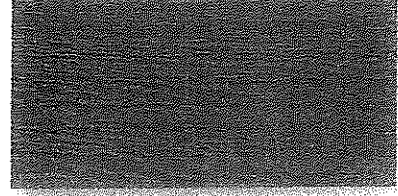
ROCK CLIFFS*
6" LAP



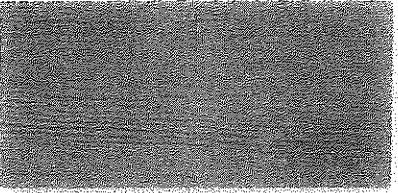
DEEP CHARCOAL*
6" LAP



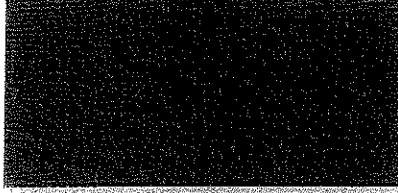
GREAT GRAY*
6" LAP



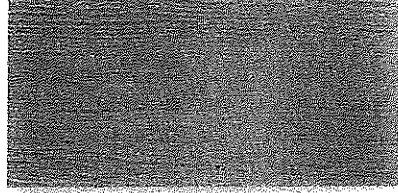
HARBOR GRAY
6" LAP • 8" LAP



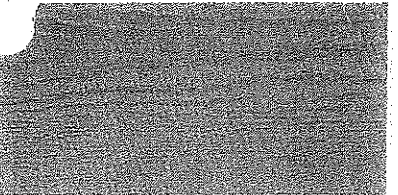
KHAKI
6" LAP • 8" LAP



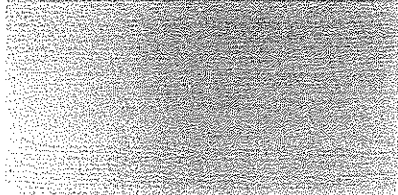
LAVA GRAY*
6" LAP



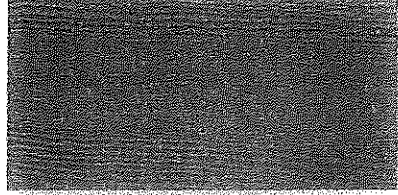
MIST GREY
6" LAP • 8" LAP



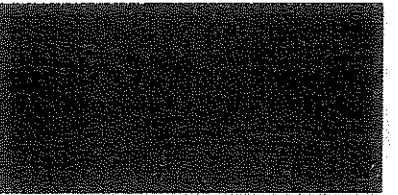
PHOENIX FOSSIL*
6" LAP • 8" LAP



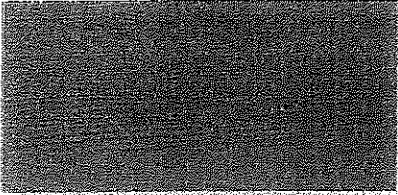
SANDSTONE*
6" LAP



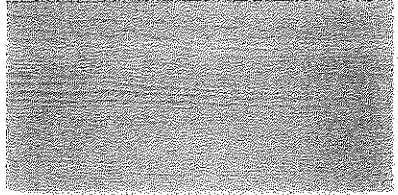
SILVER DOLLAR*
6" LAP



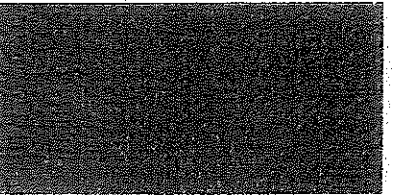
COUNTRY RED
6" LAP



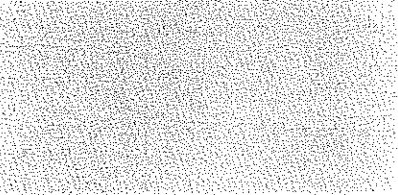
CHALKY BLUE*
6" LAP



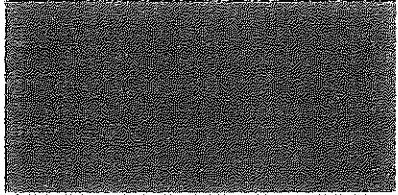
HEARTH*
6" LAP



PLUNGE POOL*
6" LAP



SAGE
6" LAP



WALNUT
6" LAP • 8" LAP

*NEW COLORS!

APPLIED ON



COATED WITH



DISTRIBUTED BY



2020 Highlights: New Product and Color Releases



NEW
PRODUCT
SOLID
COLORS
SPRING
2020

Cedar Impressions® Single 7" Perfection Shingles

New release for Spring 2020 – 12 new long-lasting solid colors that have the look of freshly painted cedar.

Page 26

sable brown

hearthstone

pacific blue

flagstone

arcoal gray

granite gray

oceanic blue

seagrass

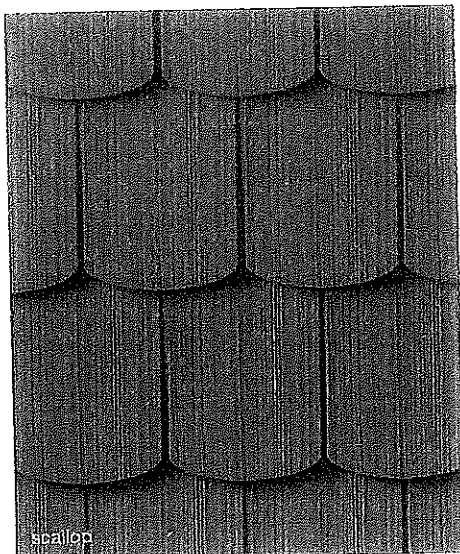
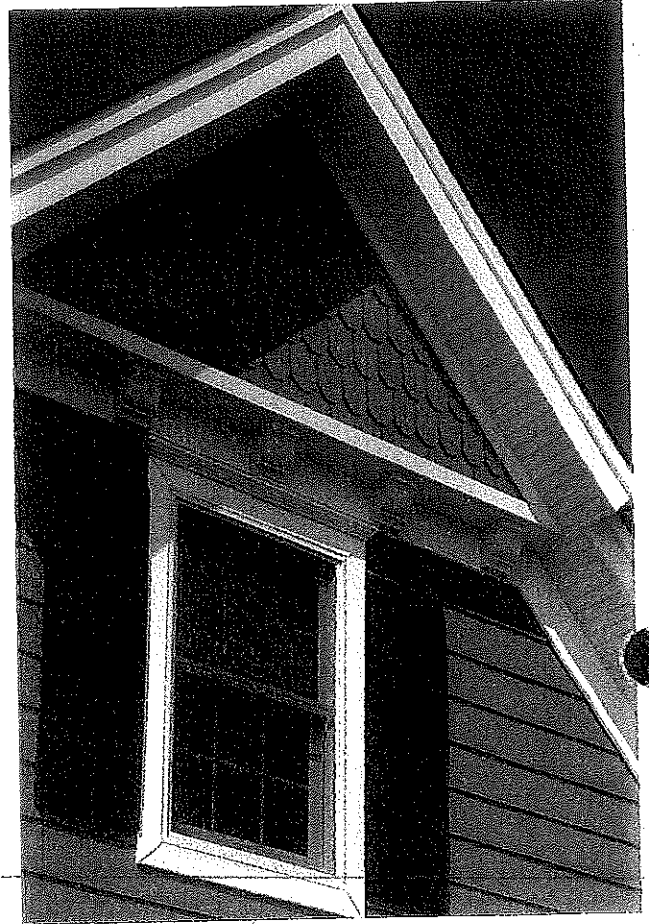
2020 Highlights: New Product and Color Releases

Cedar Impressions[®] Perfection Shapes

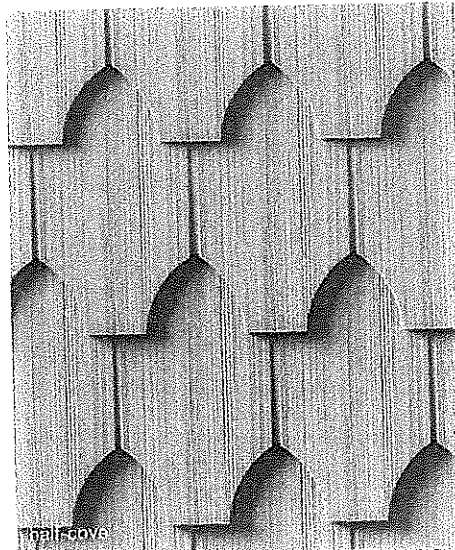
NEW
PROFILES

New Cedar Impressions Perfection Shapes replicate the most popular decorative cedar shingle designs: Scallop, Octagon and Half-Cove. Turn a plain gable, entryway or bump-out into a focal point with the application of these timeless shapes. Architecturally accurate to genuine cedar shingle shapes in dimension and texture, they are engineered for long-lasting performance without the high cost of maintenance. Add subtle accents or mix and match different shapes in each course to create your own unique experience. Cedar Impressions Perfection Shapes complements the growing trend of mixing and matching siding styles, materials and colors. Available in popular classic colors, they are easily integrated with other CertainTeed vinyl siding products.

Page 26



scallop



half-cove



octagon

Cedar Impressions®

Perfection Shingles 3G



Introducing our next generation of Cedar Impressions: Double 7" Straight-Edge Perfection Shingles 3G, engineered with new enhancements for a more beautiful and longer-lasting installation. With crisp, clean edges, 3G has more natural-looking features of real wood shingles and a new high-definition texture, accentuated shadow lines, tapered shingle gaps and realistic woodgrain butt edges. To improve the ease and quality of installation, 3G has a CertaLock™ continuous nail hem with EasyMeasure™ tape measure for accurate fitting, HammerTapper™ for easier positioning and SureStop™ for proper nailing. 3G's Double 7" profile provides a faster installation, too. Cedar Impressions Double 7" Straight-Edge Perfection Shingles 3G is also compatible with Cedar Impressions 7" Perfection Offset Mitered Cornerposts, which allow for naturally blended corner posts and subtle adjustments up the walls for a better fit to a home. 3G has a wide palette of 22 colors, from deep hues to classic shades.

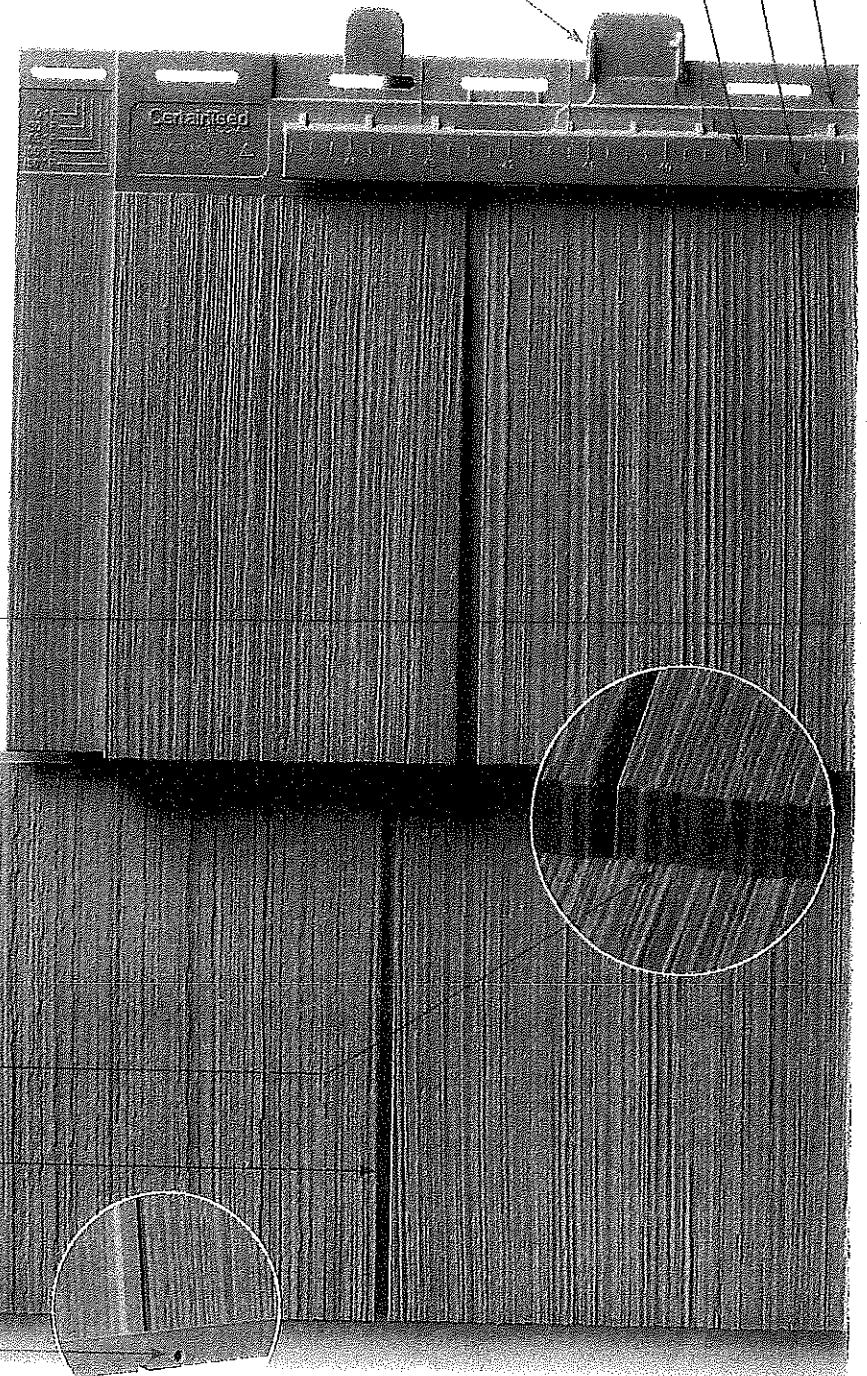
Page 26

SureStop™
Recessed nailing area

Continuous Hanger

EasyMeasure™
Tape Measure

HammerTapper™
Assist pads

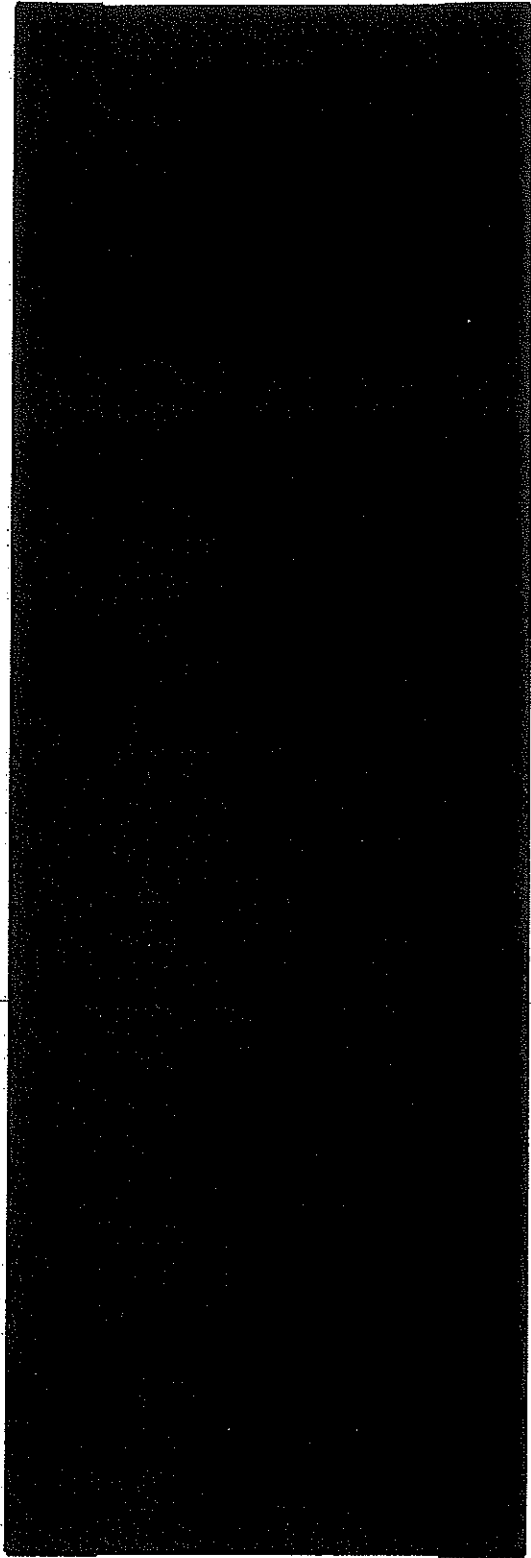


Realistic woodgrain
butt edges

Deep tapered gaps

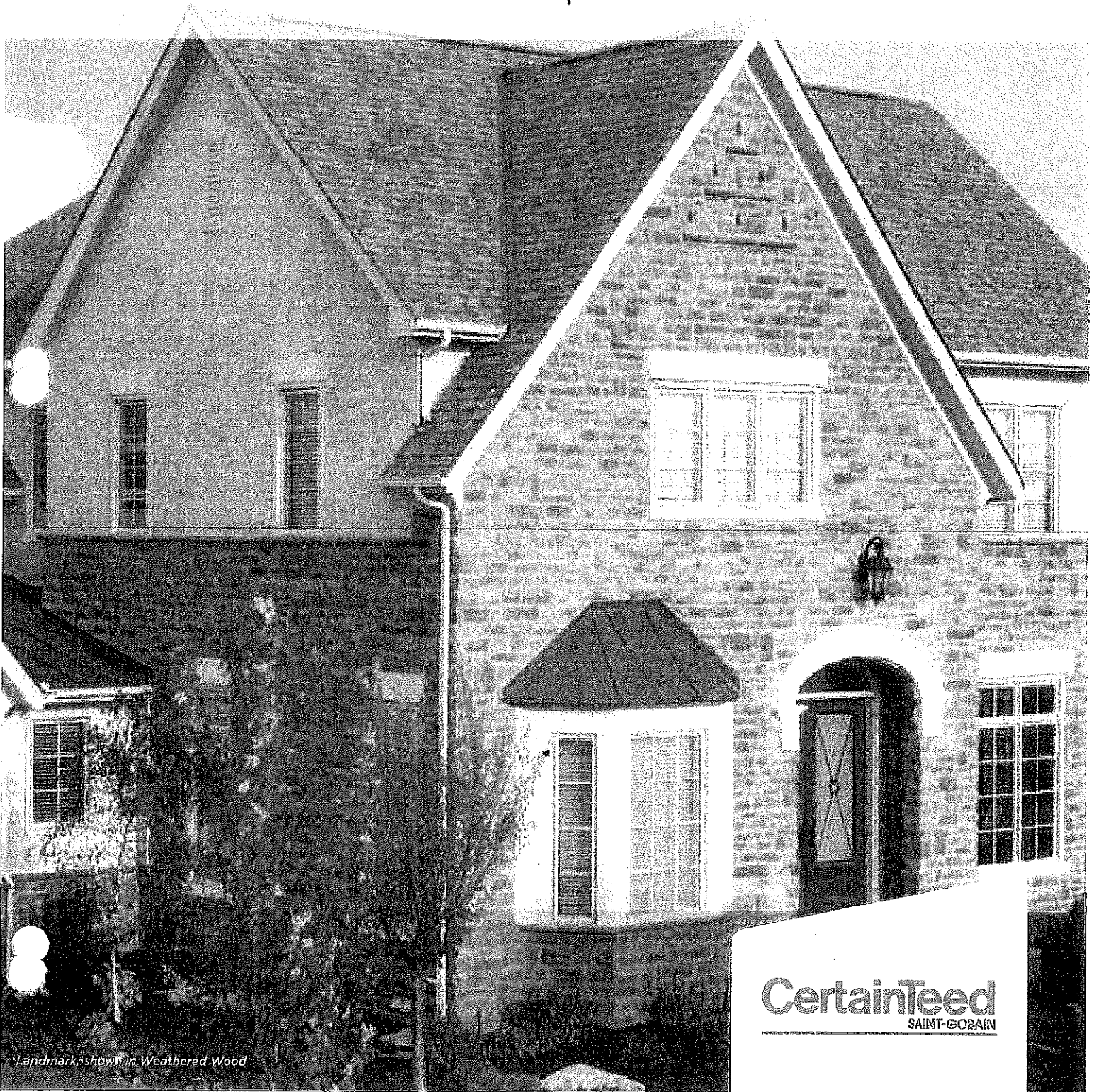
Weep holes
(back of panel)

Midnight Green



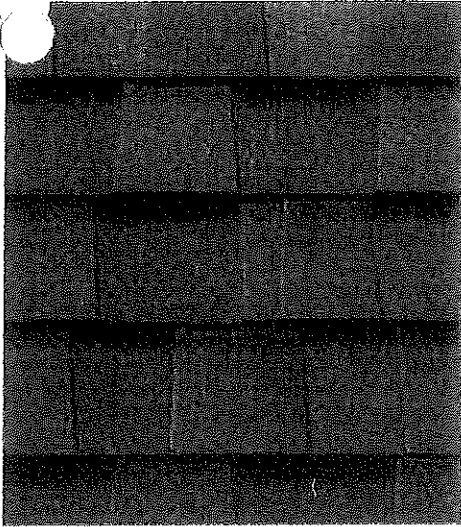
LANDMARK® SERIES SHINGLES

Featuring
StreakFighter® &
NailTrak® Technology

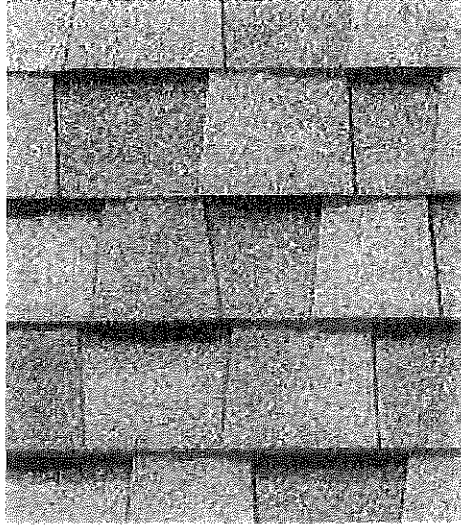


Landmark, shown in Weathered Wood

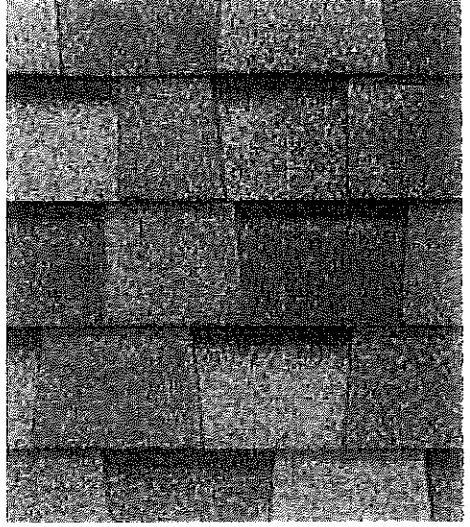
CertainTeed
SAINT-GOBAIN



Charcoal Black



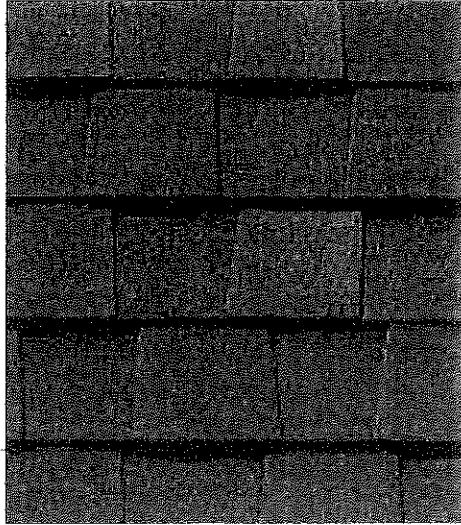
Cobblestone Gray



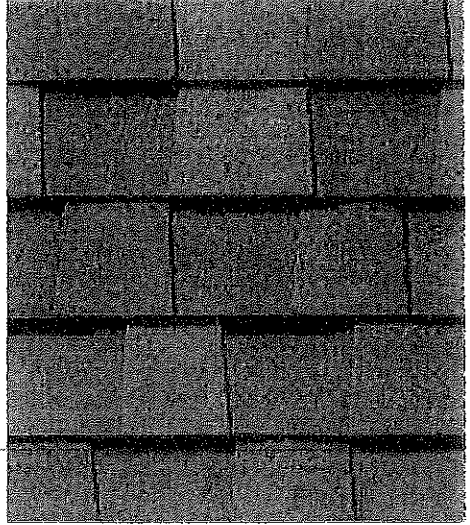
Colonial Slate



Granite Gray



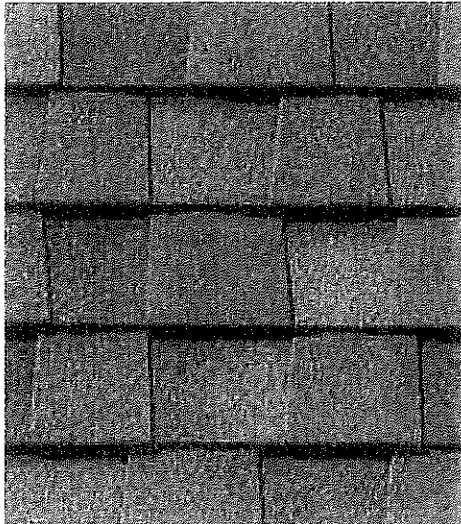
Heather Blend



Hunter Green



Silver Birch



Weathered Wood



Strength with Style

LANDMARK®

- Dual-layer durability
- 228 lbs. per square
- Industry-best lifetime limited warranty
- 10-year StreakFighter® algae-resistance warranty



LANDMARK® PRO

- Dual-layer, high performance
- 250 lbs. per square
- Max Def color palette
- Industry-best lifetime limited warranty
- 15-year StreakFighter® algae-resistance warranty



LANDMARK® PREMIUM

- Dual-layer, high performance
- 300 lbs. per square
- Max Def color palette
- Industry-best lifetime limited warranty
- 15-year StreakFighter® algae-resistance warranty



LANDMARK SERIES

SPECIFICATIONS

- Two-piece laminated fiberglass-based construction
- Classic shades and dimensional appearance of natural wood or slate

For U.S. building code compliance, see product specification sheets.

CertainTeed products are tested to ensure the highest quality and comply with the following industry standards:

Fire Resistance:

- UL Class A
- UL certified to meet ASTM D3018 Type 1

Wind Resistance:

- UL certified to meet ASTM D3018 Type 1
- ASTM D3161 Class F

Tear Resistance:

- UL certified to meet ASTM D3462
- CSA standard A123.5

Wind Driven Rain Resistance:

- Miami-Dade Product Control Acceptance: Please reference www.certainteed.com to determine approved products by manufacturing location.

Quality Standards:

- ICC-ES-ESR-1389 & ESR-3537

WARRANTY

- Lifetime limited transferable warranty against manufacturing defects on residential applications
- 50-year limited transferable warranty against manufacturing defects on group-owned or commercial applications
- StreakFighter® algae-resistance warranty (10-year - Landmark, 15-year - Landmark PRO and Premium)
- 10-year SureStart™ protection
- 15-year 110 mph wind-resistance warranty
- Wind warranty upgrade to 130 mph available. CertainTeed starter and CertainTeed hip and ridge required

See actual warranty for specific details and limitations.

;(function(dataLayer){ dataLayer.user = dataLayer.user || {}; dataLayer.user.dbid = "7c15f8c0-0313-466f-a81d-557613161211"; })(window.dataLayer = window.dataLayer || {});



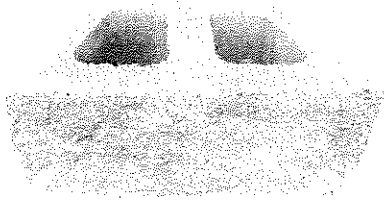
Item # 1045003 Model # LWGB

Gray/Charcoal Retaining Wall Block (Common: 6-in x 16-in; Actual: 6-in x 16-in)

1 Rating
★★★★★
5.0 Average

100%
Recommend
this
product


Community
Q&A
[View Now](#)



EXCLUSIVE

\$4.78

- A rough-cut stone finish combines with natural earth tones to enhance any ...
- Rear lip connection means no special tools or mortar required during ...
- Perfect for planters, borders, tree rings, and straight, or curved, retaining walls...



FREE Store Pickup

47 available today at Framingham Lowe's!



Delivery

Delivery available

Aisle GC04 , Bay 2



Get 5% OFF* Every Day or 6 Months Special Financing**

*,**Offer subject to credit approval and can't be combined with other credit offers. Minimum purchase required. Exclusions apply.

[GET DETAILS](#)

Product Information

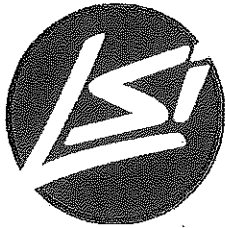
Description

Basic wall hard split straight face finish with blended colors.

- A rough-cut stone finish combines with natural earth tones to enhance any landscape project
- Rear lip connection means no special tools or mortar required during installation
- Perfect for planters, borders, tree rings, and straight, or curved, retaining walls up to 3 feet high
- DIY-friendly open core reduces the unit's weight and provides a handle for easy carrying
- Color, dimensions, weight and textures may vary slightly due to natural materials used during manufacturing; check your local store for precise information

Specifications

Series Name	N/A	Actual Length (Short Side) (Inches)	11
Type	Retaining wall block	Actual Depth (Inches)	10
Material	Concrete	Actual Height (Inches)	6
Shape	Trapezoid	Face Feet per Stone (Sq. Feet)	0.67
Color/Finish Family	Gray	Maximum Wall Height (Feet)	3
Manufacturer Color/Finish	Gray/Charcoal	Assembly Type	Interlocking back lip
Face Type	Straight	Weight (lbs.)	42
Dual-Sided	X	Contractor Grade	✓
Common Length (Long Side) (Inches)	16		
	11		



Search

Lighting Solutions

- LED
- Outdoor
- Indoor
- Landscape
- Sports

- DLC Qualified Products
- Phased Out/Discontinued
- Standard Colors Chart
- Terms, Conditions & Warranty
- ISO 9001:2015 Certified

- Local Sales Rep
- Local Certified Contractor
- Quick Ship Programs
- Buyer's Guide



LSI Newsroom
The most recent press releases, news articles, and upcoming events from LSI Industries.

[Learn More](#)

[← Previous Page](#)

Traditional LED Flood Lights (TSFL, TMFL, TLFL)

LSI flood lights are the most powerful LED flood lights available in the market today. They use optical grade individual acrylic lenses which deliver more lumens to the desired target, guaranteeing more footcandles, less glare and less wasted light.

Applications Resources & Photometrics

Name	Files
------	-------

Photometric IES files

Description: Updated 1/8/2019

LM-79 PDF Reports

Description: Updated 1/8/2019

Reference our [Product Specification Sheets and Installation Instructions](#) concerning any limitations that would restrict the use of the [IES Design files](#) and [LSI Industries Lighting Calculation Tools](#) for specific applications.

LSI Industries (All IES Files)

Description: Updated 2/20/2020 (12mb)

LSI Outdoor LED Fixt. BUG Summary

Description: Updated 2/18/2020

LSI Industries Revit Files (All Revit Files)

Description: Updated 2/18/2020 (86mb)

LSI Revit Family User Guide

Description: Updated 1/15/2020

(Guide for using LSI REVIT Families & IES Files)

ROI Calculators

(Standard & 5 Fixture) (Excel format)

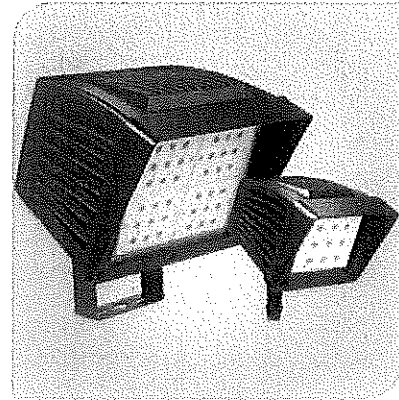
Description: Updated 11/12/2018

LED Fixture Images

Description: Updated 1/29/2020 (71mb)

Application Request Form

Description: Updated 4/18/2018



This product, or selected versions of this product, meet the standards listed below



Specification Sheets

- TSFL Small 2L Specs sheet
- TMFL Medium 4L Specs sheet
- TLFL Large 8L Specs sheet
- TLFL Large 13L Specs sheet
- TLFL Large 17L Specs sheet
- TLFL Large 20L Specs sheet
- TLFL Large 26L Specs sheet
- TLFL Large 33L Specs sheet
- TLFL Large 40L Specs sheet

DLC Rebate Lookup Tool

[Find Local Rebates Here](#)

Installation Instructions

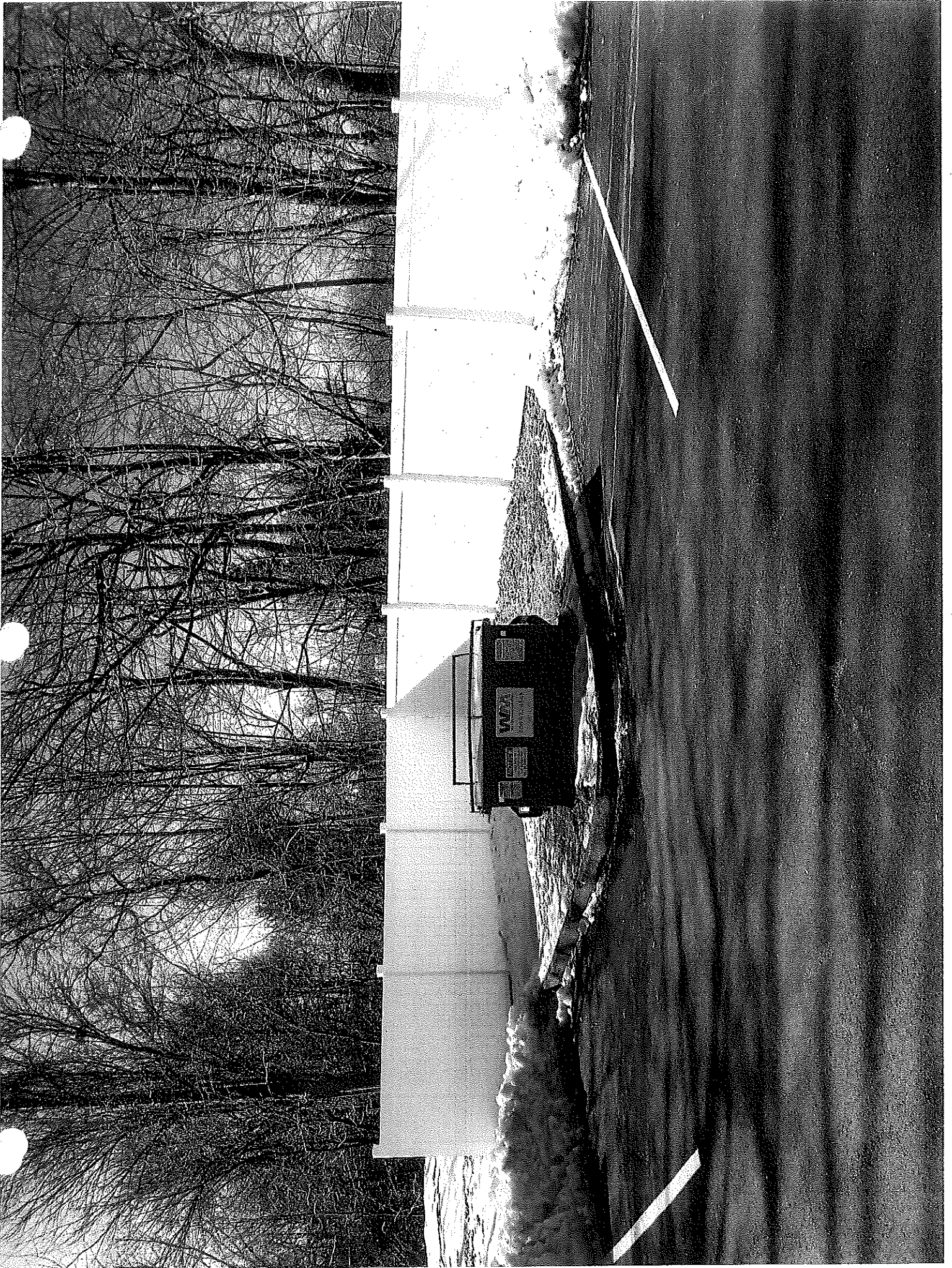
[Installation](#)

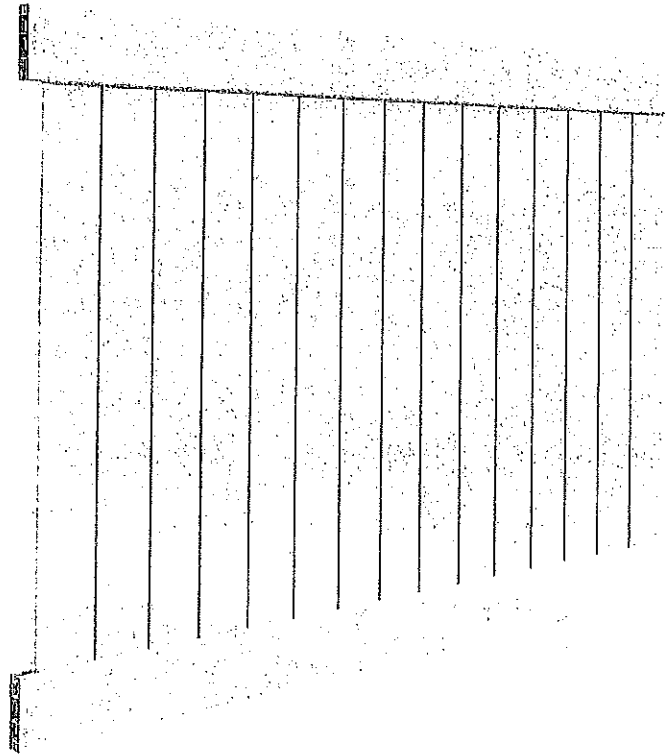
Literature

[Performance Comparison Guide](#)

Lighting Calculator Tools

[LED Traditional Flood](#)





[Share](#) [Save to Favorites](#) [Print](#)

Veranda

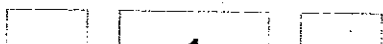
Acadia 6 ft. x 8 ft. White Vinyl Privacy Panel Fence Kit (QQ)

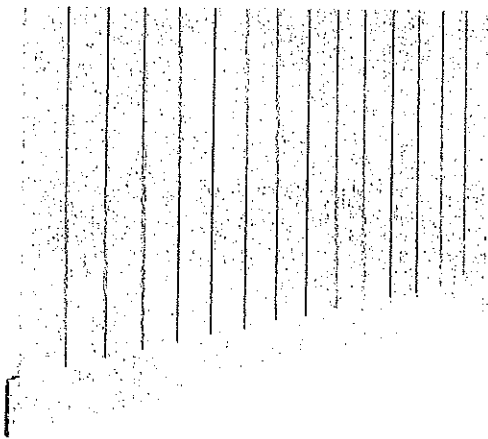
★★★★★ (20) [Write a Review](#) [Questions & Answers \(19\)](#)

- Fence features lightweight design for easy and fast installation
- Vinyl withstands the impact of rain and moisture better than wood
- Seamless look built for various terrains

\$84⁸⁷ Buy 18 or more \$76.38

Save up to \$100 on your qualifying purchase.
Apply for a Home Depot Consumer Card



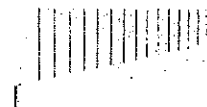


**Veranda Linden 6
ft. H x 8 ft. W
White Vinyl Pro**

(388)

\$99¹⁰

Add To Cart

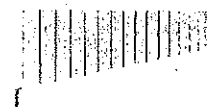


**Veranda Acadia 6
ft. x 8 ft. White
Vinyl Privacy**

(2)

\$110¹⁵

Add To Cart



**Veranda
Roosevelt 6 ft. H x
8 ft. W Two-Toned**

(13)

\$120⁶⁸ /piece

Add To Cart

Current Item

Product Overview

The Acadia 6 ft. H x 8 ft. W White Vinyl Privacy Fence Panel Kit has do-it-yourself friendly styles to professional grade fencing. This vinyl fence offers the perfect combination of high quality and low maintenance you have been looking for. The lightweight design makes installation fast and easy.

- Made of durable, low maintenance vinyl
- White finish adds elegance to your home
- Unlike wood fences, it does not require sanding nor painting
- Lightweight design for easy and fast installation
- Solid vinyl panels eliminate gaps and knot holes common in wooden privacy fences
- Withstands the impact of rain and moisture better than wood fences
- 6 ft. H x 8 ft. W with a privacy panel pattern
- Materials needed - panel kit, posts, post tops, post clips, concrete and pea gravel
- Seamless look built for various terrains
- Easy to install for the do-it-yourselfer
- Posts and post tops are sold separately
- Coordinating gate sold separately, use: model # 73025692

365 Main St Current View

Legend



Google Earth

© 2019 Google
© 2019 Google

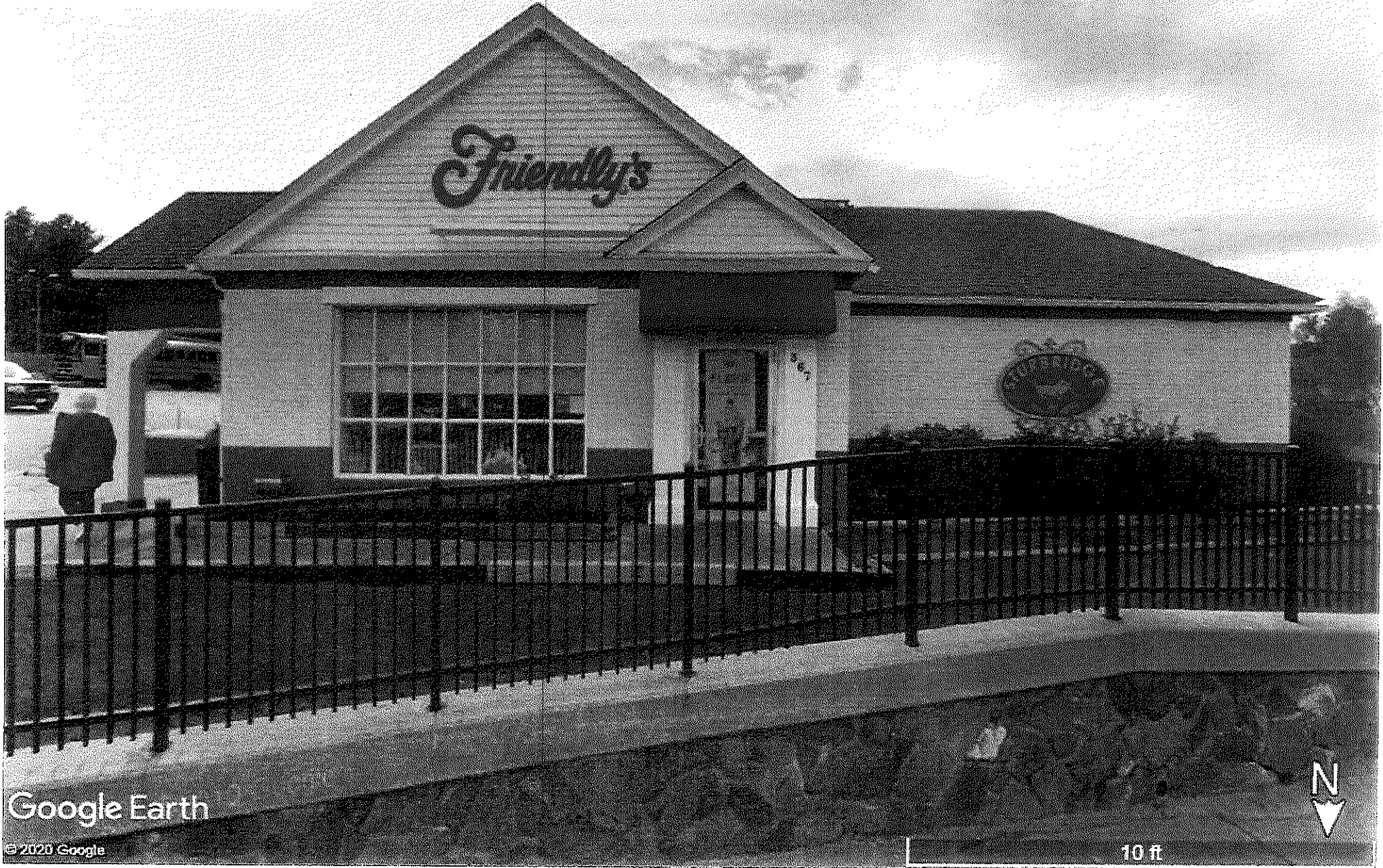
9.32 ft



Friendly's Exterior

Sturbridge, MA

Legend



Google Earth

© 2020 Google

10 ft







Untitled Map

Write a description for your map.

Legend



Google Earth

© 2020 Google

8.24 ft



Village Green Zelikova



Bloodgood Planetree



Pin Oak



Skyline Honeylocust

White Fir



White Spruce



Green Giant Arborvitae



Redtwig Dogwood



Emerald Gaiety Wintercreeper



Border Forsythia



Seagreen Juniper



Bar Harbor Juniper



Gro-low sumac



Cap Yew



Oak Sedge



Stella D'Oro Daylilly



Variegated Hosta



Bearded Iris



Variegated Lilyturn



Walkers Low Catmint



Shenandoah Switch Grass



Fountain Grass



Goldsturm Black Eyed Susan



Local Roots

365 Main Street
Sturbridge, MA

Applicant:

Caregiver Patient Connection LLC

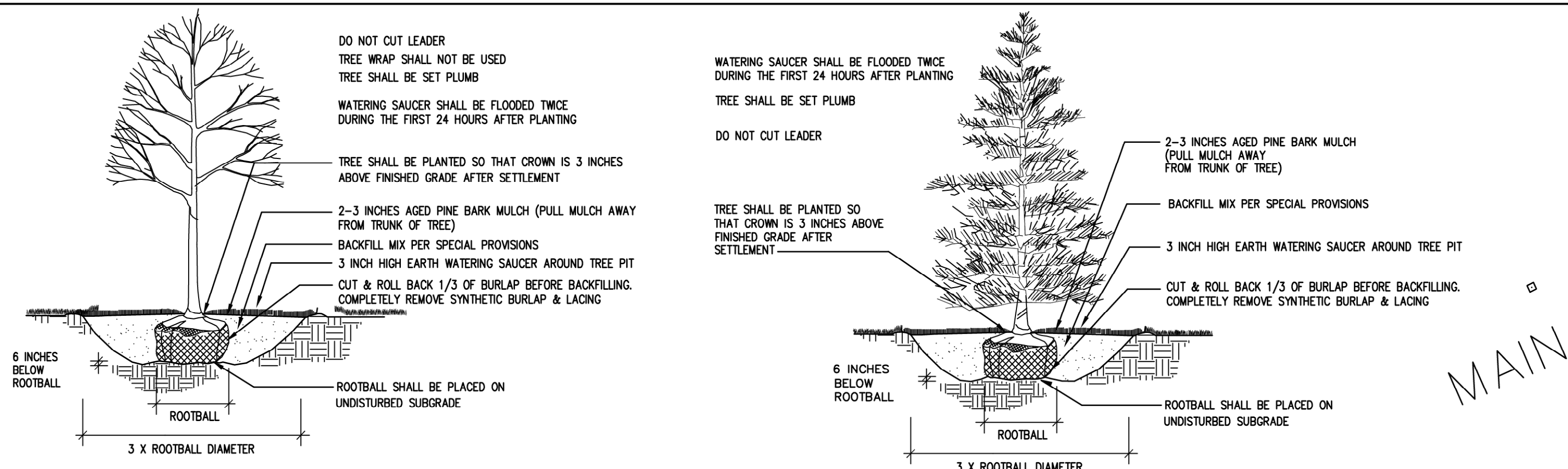
DBA Local Roots NE
910 Boston Post Road
Marlborough, MA 01752

Landscape Architect

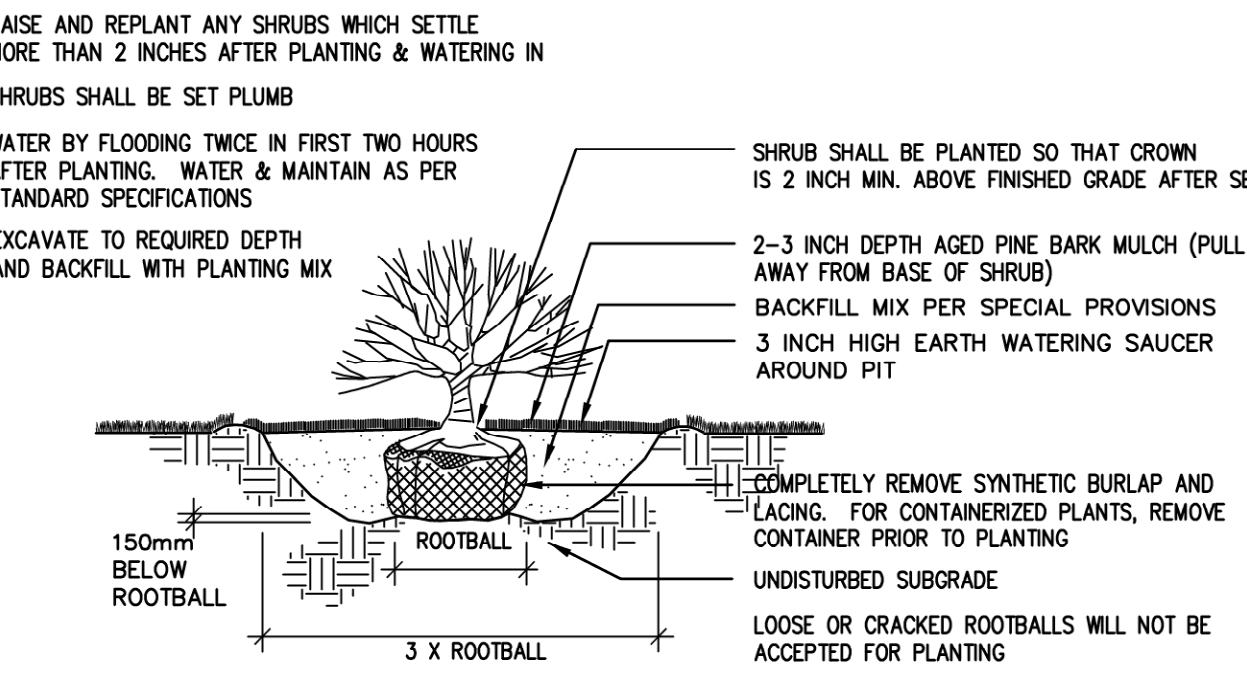


Radner Design Associates, Inc.

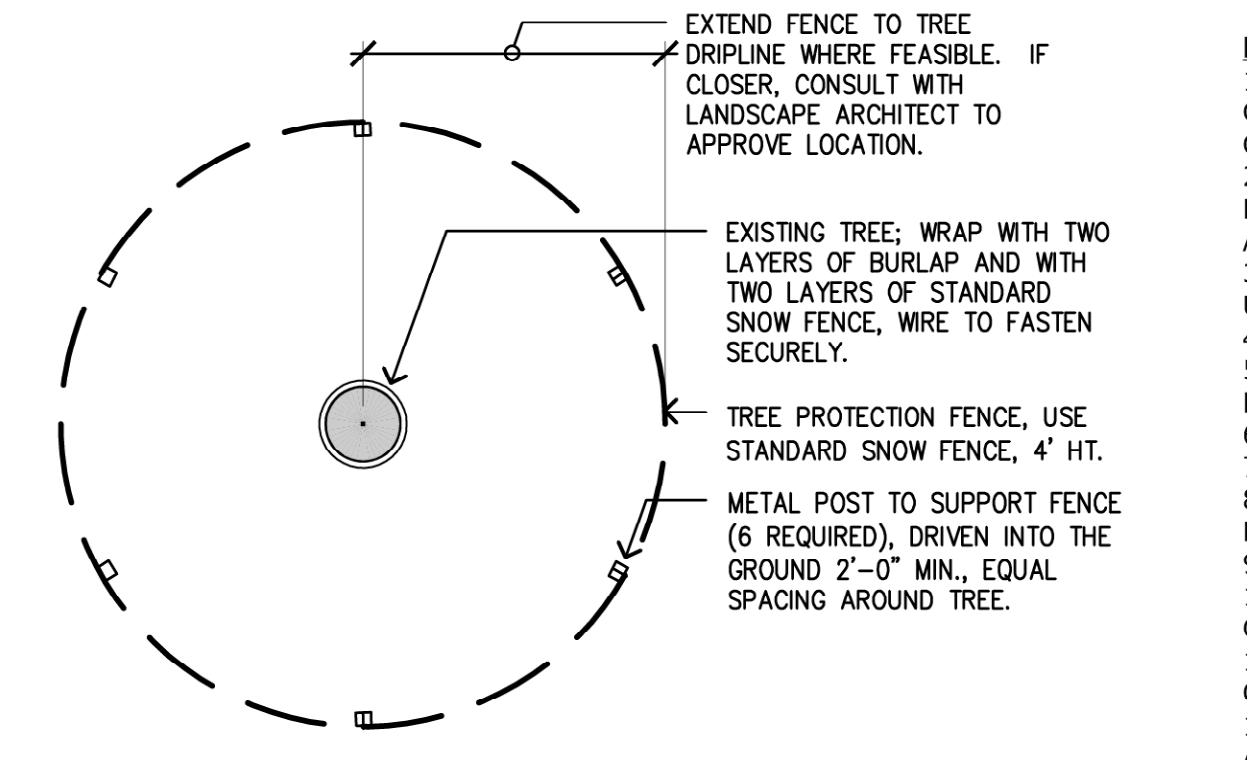
945 Concord Street, Suite 100
Framingham, MA 01701
508.736.6144
www.RadnerDesign.com



DECIDUOUS TREE PLANTING
NOT TO SCALE

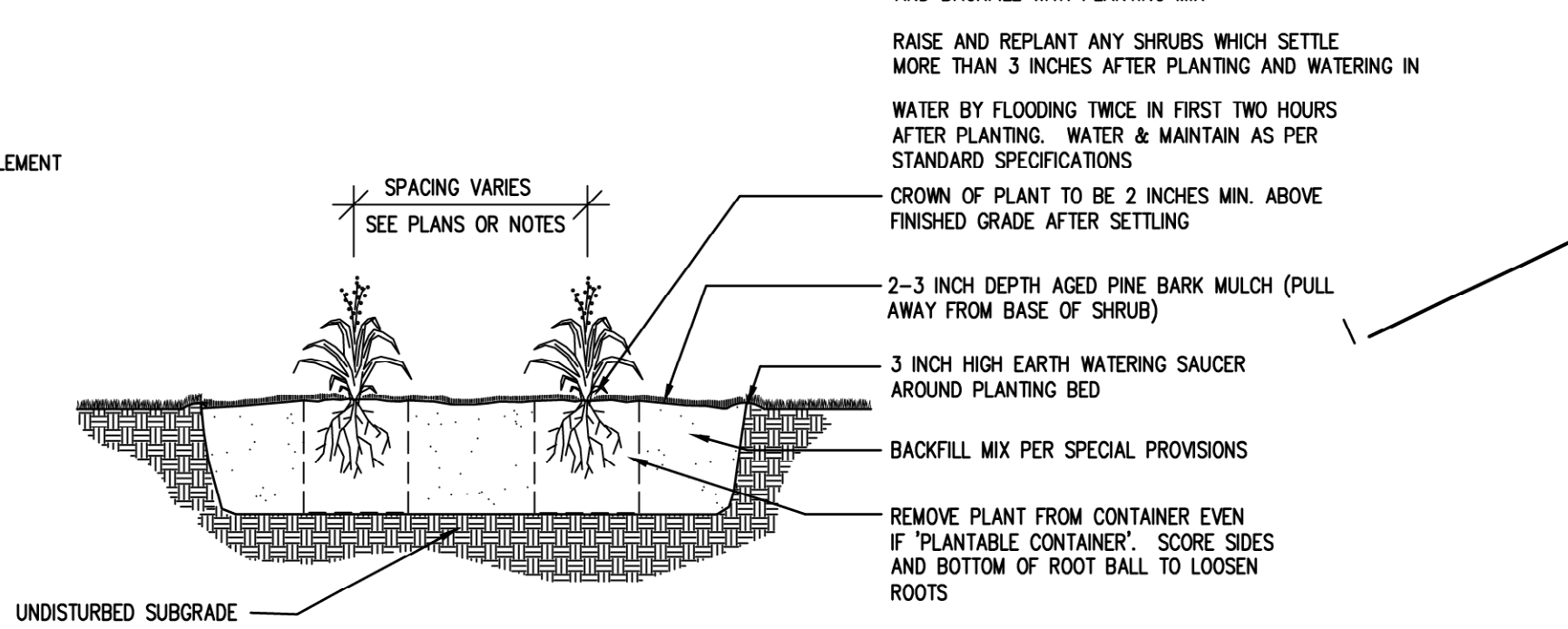


SHRUB PLANTING
NOT TO SCALE



TREE PROTECTION DETAIL
NOT TO SCALE

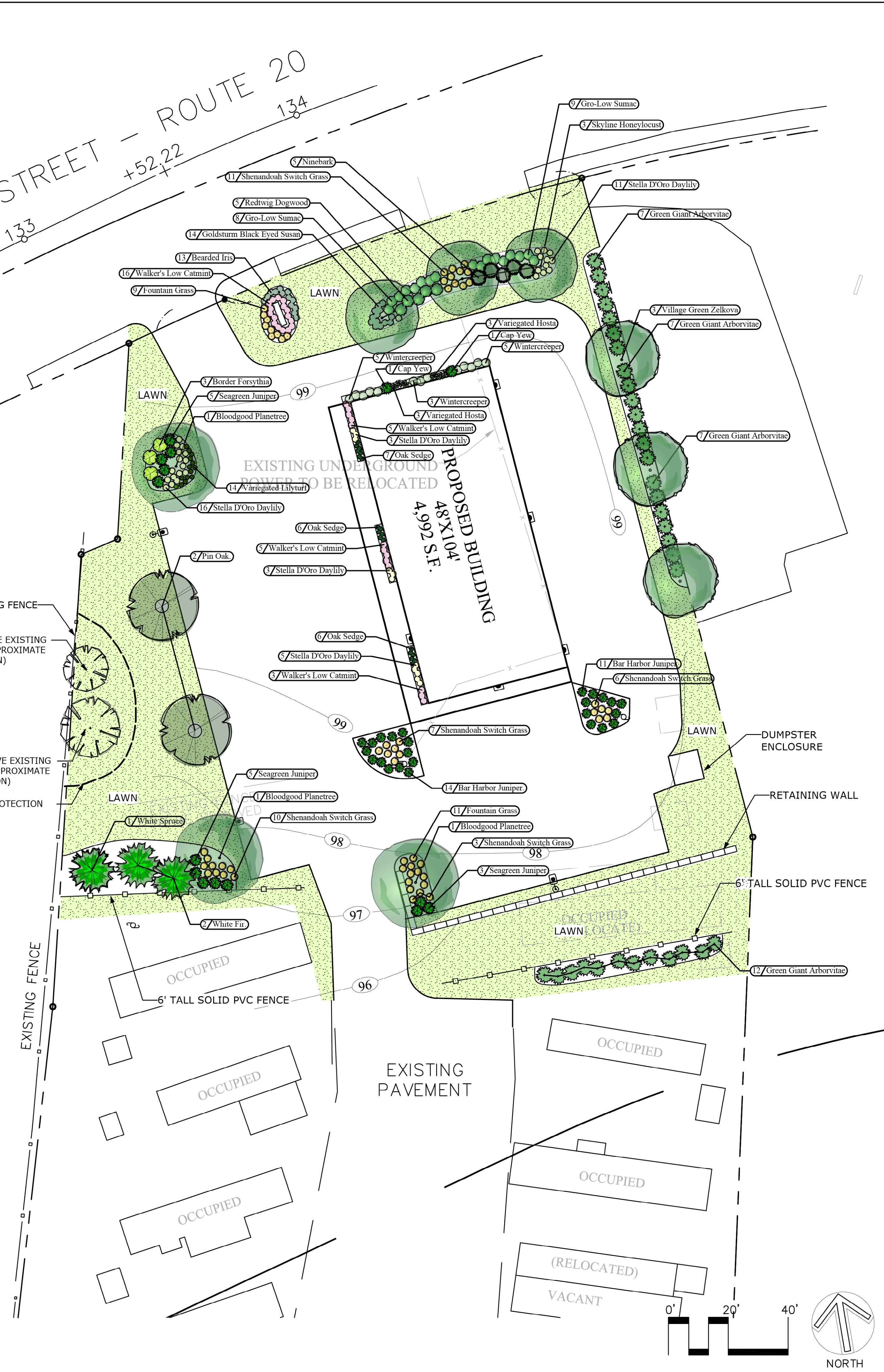
EVERGREEN TREE PLANTING
NOT TO SCALE



PERENNIAL PLANTING
NOT TO SCALE

- NOTES**
- FURNISH AND INSTALL PLANTS AS SHOWN. CONTRACTOR SHALL BE RESPONSIBLE FOR QUANTITY OF SHRUBS GRAPHICALLY SHOWN ON PLANS. IF THERE IS A DISCREPANCY BETWEEN PLANT LIST QUANTITIES AND GRAPHICS, THE GRAPHIC SHALL TAKE PRECEDENCE.
 - PRIOR TO THE START OF EXCAVATION FOR THE PROJECT BOTH ON AND OF THE SITE, THE CONTRACTOR SHALL NOTIFY DIGSAFE AND BE PROVIDED A DIGSAFE NUMBER INDICATING THAT EXISTING UTILITIES HAVE BEEN LOCATED AND MARKED.
 - CONTRACTOR SHALL BEGIN 90 DAY MAINTENANCE PERIOD IMMEDIATELY UPON PLANTING AND WILL CONTINUE UNTIL FINAL ACCEPTANCE.
 - CONTRACTOR SHALL VERIFY TREE REMOVALS WITH LANDSCAPE ARCHITECT PRIOR TO CONSTRUCTION START.
 - CONTRACTOR SHALL MAINTAIN POSITIVE DRAINAGE AWAY FROM BUILDING FOUNDATIONS, STRUCTURES, AND PLANTING BEDS.
 - MAXIMUM SLOPE WITHIN DISTURBED AREAS SHALL NOT EXCEED 3:1, UNLESS OTHERWISE NOTED.
 - PLANTS SHALL BEAR THE SAME RELATIONSHIP TO FINISH GRADE AS TO ORIGINAL GRADES BEFORE DIGGING.
 - PLANT MATERIALS SHALL CONFORM TO THE GUIDELINES ESTABLISHED BY "THE AMERICAN STANDARD FOR NURSERY STOCK", PUBLISHED BY THE AMERICAN ASSOCIATION OF NURSERYMEN.
 - PLANTS TO BE BALLED IN BURLAP OR CONTAINERIZED.
 - MULCH FOR PLANTED AREAS TO BE AGED PINE BARK: PARTIALLY DECOMPOSED, DARK BROWN IN COLOR AND FREE OF WOOD CHIPS THICKER THAN 1/4 INCH.
 - PLANTING SOIL MIX: LOAM THOROUGHLY INCORPORATED WITH ROTTED MANURE PROPORTIONED 5 C.Y. TO 1 C.Y. OR EQUIVALENT. USE OF PEAT MOSS IS PROHIBITED.
 - THE LANDSCAPE CONTRACTOR SHALL GUARANTEE PLANT MATERIALS FOR ONE (1) FULL YEAR FROM DATE OF ACCEPTANCE. REQUEST THE LANDSCAPE ARCHITECT PROVIDE A WRITTEN LETTER OF ACCEPTANCE UPON COMPLETION OF EACH PHASE.
 - PLANT MATERIALS ARE SUBJECT TO THE APPROVAL OF THE LANDSCAPE ARCHITECT, AT THE NURSERY, AND AT THE SITE.
 - LANDSCAPE ARCHITECT TO FLAG TREES TO BE TRANSPLANTED PRIOR TO CONSTRUCTION START.
 - AREAS OF THE SITE WHICH HAVE BEEN DISTURBED AND NOT OTHERWISE DEVELOPED SHALL BE LOAMED WITH TOPSOIL TO A MINIMUM DEPTH OF 6", AND SEEDED WITH A MIX CONSISTING OF 40% PERENNIAL RYE GRASS; 30% CHEWINGS FESCUE; 30% KENTUCKY BLUEGRASS.
 - SCREENED IMAGES SHOW EXISTING CONDITIONS. WHERE EXISTING CONDITIONS LIE UNDER OR ARE IMPINGED UPON BY PROPOSED BUILDINGS AND/OR SITE ELEMENTS, THE EXISTING CONDITION WILL BE REMOVED, ABANDONED AND/OR CAPPED OR DEMOLISHED AS REQUIRED.
 - THERE SHALL BE NO SUBSTITUTION OF PLANT SPECIES WITHOUT AUTHORIZATION BY THE LANDSCAPE ARCHITECT.
 - NO PLANTING SHALL BE INSTALLED BEFORE ACCEPTANCE OF ROUGH GRADING.
 - PLANTS TO BE THOROUGHLY WATERED AFTER INSTALLATION, AT LEAST TWICE WITHIN THE FIRST 24 HOURS.

#	Botanical Name	Common Name	Size/Form	Remarks
Shade Trees				
3	Gleditsia triacanthos 'inermis' 'Skyline'	Skyline Honeylocust	2.5-3" Cal.	B&B, Full, Symmetrical, High Branched
3	Platanus acerifolia 'Bloodgood'	Bloodgood Planetree	2.5-3" Cal.	B&B, Full, Symmetrical, High Branched
2	Quercus palustris	Pin Oak	2.5-3" Cal.	B&B, Full, Symmetrical, High Branched
3	Zelkova serrata 'Village Green'	Village Green Zelkova	2-2.5" Cal.	B&B, Full, Symmetrical, High Branched
Evergreen Trees				
2	Abies concolor	White Fir	6'-7' Ht.	B&B, Full, Symmetrical, Strong Central Leader
1	Picea glauca	White Spruce	6'-7' Ht.	B&B, Full, Symmetrical, Strong Central Leader
33	Thuja 'Green Giant'	Green Giant Arborvitae	4-5' Ht.	B&B, Full, Symmetrical, Strong Central Leader
Shrubs				
5	Cornus alba 'Sibirica'	Redtwig Dogwood	24-30" Ht.	Container
13	Euonymus fortunei 'Emerald Gaiety'	Emerald Gaiety Wintercreeper	12-18" Ht.	Container
3	Forsythia intermedia	Border Forsythia	3-4' Ht.	Container
13	Juniperus chinensis 'Seagreen'	Seagreen Juniper	18-24" Ht.	Container
25	Juniperus horizontalis 'Bar Harbor'	Bar Harbor Juniper	12-18" Spr.	Container
5	Physocarpus opulifolium 'Diabolo'	Ninebark	24-30" Ht.	Container
17	Rhus aromatica 'Gro-Low'	Gro-Low Sumac	12-18" Ht.	Container
2	Taxus cuspidata 'Capitata'	Cap Yew	3-4' Ht.	Container
Perennials, Groundcovers, and Grasses				
19	Carex pennsylvanica	Oak Sedge	1 Gal.	Container
38	Hemerocallis x 'Stella de Oro'	Stella D'Oro Daylily	1 Gal.	Container
6	Hosta 'Francee'	Variegated Hosta	1 Gal.	Container
13	Iris germanica	Bearded Iris	1 Gal.	Container
14	Liriope muscari 'Variegata'	Variegated Lilyturf	1 Gal.	Container
29	Nepeta x faassenii 'Walker's Low'	Walker's Low Catmint	1 Gal.	Container
37	Panicum virgatum 'Shenandoah'	Shenandoah Switch Grass	1 Gal.	Container
20	Pennisetum alopecuroides	Fountain Grass	1 Gal.	Container
14	Rudbeckia fulgida 'Goldsturm'	Goldsturm Black Eyed Susan	1 Gal.	Container



Revision:

Drawn: mr

Scale: 1"=20'-0"



Sheet Name:
Planting Plan

Project No.:
20-08

Issue Date:
02.26.2020

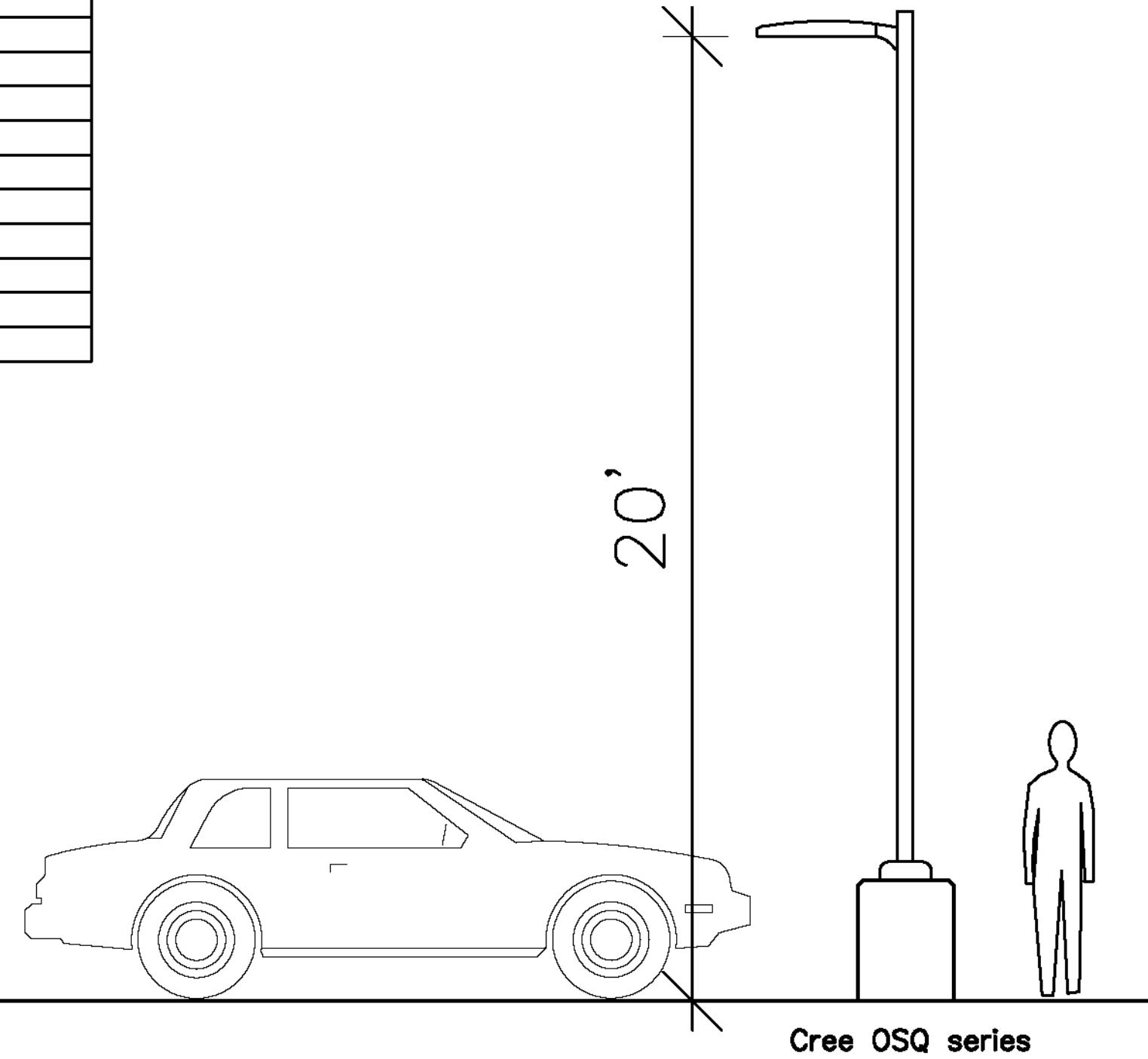
Sheet No.:

L1

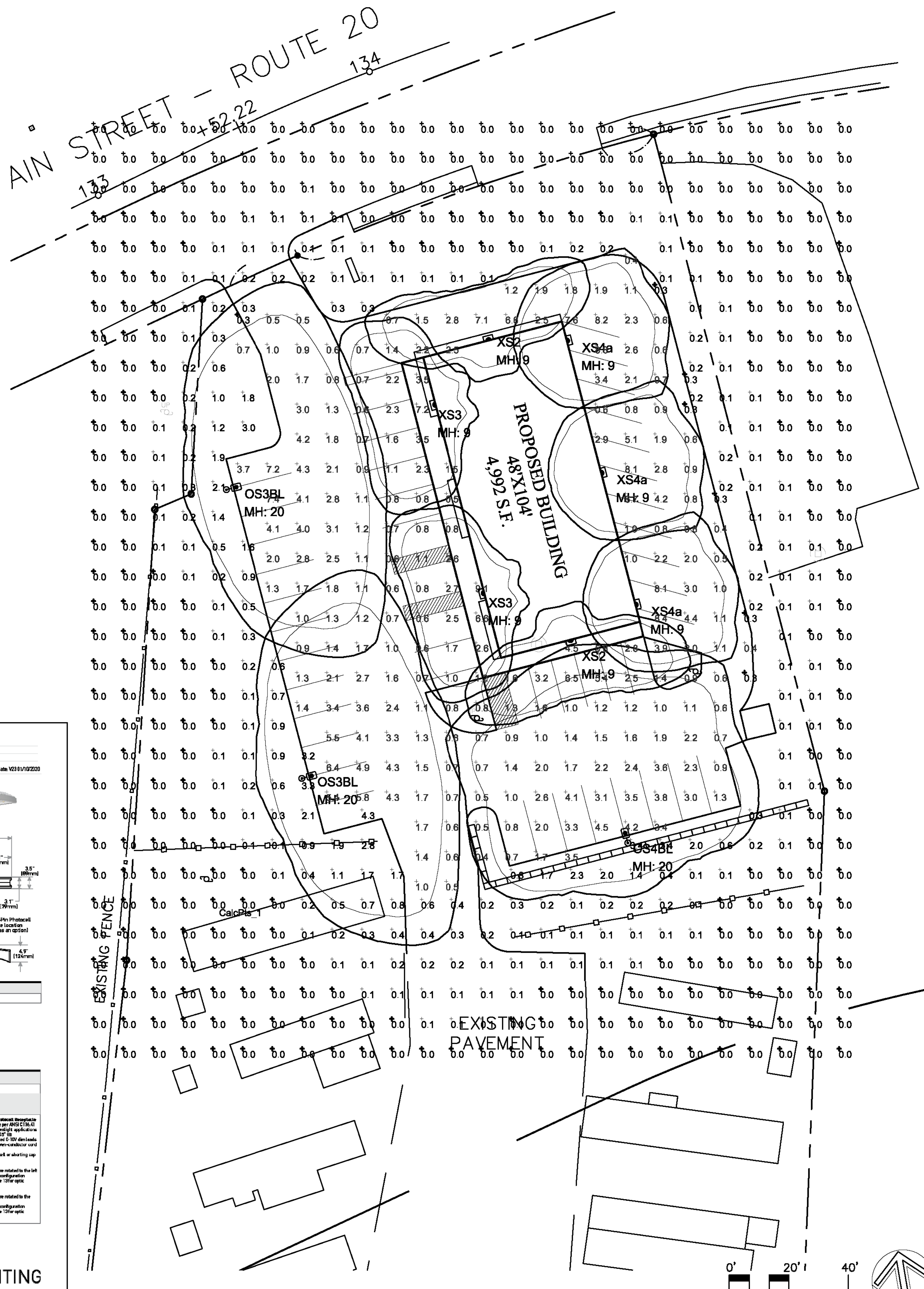
Symbol	Qty	Label	Description	Arm	Lum. Lumens	LLF	Filename
OS3BL	2	OS3BL	OSQ-A-xx-3ME-K-40K-UL-BLSMF CONF	1.5	13389	0.900	OSQ-A-XX-3ME-K-40K-ULXXXXX W_OSQ-BLSMF_CONFIGURE
OS4BL	1	OS4BL	OSQ-A-xx-4ME-K-40K-UL-BLSMF CONF	1.5	13032	0.900	OSQ-A-XX-4ME-K-40K-ULXXXXX W_OSQ-BLSMF_CONFIGURE
XS2	2	XS2	XSPW-B-xx-2ME-4L-40K-UL CONF	0	4270	0.900	XSPW-B-XX-2ME-4L-40K-UL_CONFIGURED.ies
XS3	2	XS3	XSPW-B-xx-3ME-4L-40K-UL	0	4282	0.900	XSPW-B-XX-3ME-4L-40K-UL_PL13103-001A.ies
XS4a	3	XS4a	XSPW-B-xx-4ME-8L-40K-UL CONF	0	6100	0.900	XSPW-B-XX-4ME-8L-40K-UL_CONFIGURED.ies

Label	CalcType	Units	Avg	Max	Min	Avg/Min	Max/Min
CalcPts_1	Illuminance	Fc	2.22	9.1	0.3	7.40	30.33
CalcPts_2	Illuminance	Fc	0.16	4.3	0.0	N.A.	N.A.

LumNo	Label	X	Y	Z	Orient	Tilt
1	XS2	116.625	307.875	9	104.621	0
2	XS4a	145.125	306	9	14.454	0
3	XS3	96.875	283.5	9	194.568	0
4	XS4a	168.75	261.75	9	14.454	0
5	OS3BL	32.125	267	20	11.729	0
6	XS3	113.875	220.5	9	194.568	0
7	XS4a	168.375	217.625	9	14.454	0
8	XS2	145.125	202.625	9	283.972	0
9	OS3BL	56.625	160.5	20	11.729	0
10	OS4BL	162.25	138.125	20	104.844	0



LIGHT POLE ELEVATION
NOT TO SCALE



XSP Series

XSPW LED Wall Mount Luminaire featuring Cree TrueWhite® Technology

Product Description
The XSPW LED wall mount luminaire has a slim, low profile design. Intended for outdoor wall mounted applications. The rugged aluminum housing and mounting are designed for installation over standard single gang J-Boxes and mid-rise single gang J-Boxes. The luminaire allows for through-wire or conduit entry from the top, bottom, side or front. The housing design is intended specifically for LED technology including a weatherlight LED driver compartment and thermal management. Optic design features a industry-leading NanoPrint® Precision Delivery™ system in multiple distributions.

Applications: General area and security lighting

Performance Summary

- Analogical Precision Delivery™ optic
- Assembled in the U.S.A. of U.S. and imported parts
- CRI: Minimum 90 CRI (303K, 4000K & 5000K), 90 CRI (5000K)
- CCT: 3000K, 4000K, 5000K, 5700K
- Limited Warranty: 10 years or luminaires 10 years on Coarsted Die to Seal™ finish

Accessories

- Field installed
- Mounting Plate: 12" (305mm) Square
- Mounting Plate: 12" (305mm) Square
- Mounting Plate: 12" (305mm) Square

Ordering Information

Example: XSPW-B-WM-2ME-2L-30K-UL-3K

Product	Version	Mounting	Optic	Lumens	CCT	Voltage	Color Options	Options
XSPW	B	Wall	2ME Type II Medium	2L 2200 Lumens	30K	UL	Black, Bronze, Silver, White	None
XSPW	B	Wall	2ME Type II Medium	4L 4200 Lumens	30K	UL	Black, Bronze, Silver, White	None
XSPW	B	Wall	2ME Type II Medium	4L 4200 Lumens	30K	UL	Black, Bronze, Silver, White	None
XSPW	B	Wall	2ME Type II Medium	4L 4200 Lumens	30K	UL	Black, Bronze, Silver, White	None

OSQ Series

OSQW LED Area/Flood Luminaire - Medium

Product Description
The OSQW Area/Flood luminaire blends extreme optical control, advanced thermal management and modern, clean aesthetics. Built to last, the housing is rugged and durable with an integral, weatherlight LED driver compartment. Versatile mounting configurations offer simple installation. The slim, low-profile design is ideal for use in a variety of applications including site specific, quality illumination. The "I" input power designator is a suitable upgrade for HID applications up to 200 Watt, and the "K" input power designator is a suitable upgrade for HID applications up to 400 Watt.

Applications: Parking lots, walkways, campuses, car dealerships, office complexes, tunnels, underpasses, and internal walkways

Performance Summary

- Analogical Precision Delivery™ optic
- Assembled in the U.S.A. of U.S. and imported parts
- Initial Delivered Lumens: Up to 17,291
- Efficacy: Up to 136 LMW
- CRI: Minimum 90 CRI (3000K, 4000K & 5000K), 90 CRI (5000K)
- CCT: 3000K, 4000K, 5000K, 5700K
- Limited Warranty: 10 years on luminaire/10 years on Coarsted Die to Seal™ finish/5 years on Optique wireless control accessory/5 years on luminaire accessories

Ordering Information

Example: OSQW-A-4ME-8L-40K-UL-3K

Product	Version	Mounting	Optic	Lumens	CCT	Voltage	Color Options	Options
OSQW	A	Wall	4ME Type II Medium	4L 4200 Lumens	40K	UL	Black, Bronze, Silver, White	None
OSQW	A	Wall	4ME Type II Medium	4L 4200 Lumens	40K	UL	Black, Bronze, Silver, White	None
OSQW	A	Wall	4ME Type II Medium	4L 4200 Lumens	40K	UL	Black, Bronze, Silver, White	None
OSQW	A	Wall	4ME Type II Medium	4L 4200 Lumens	40K	UL	Black, Bronze, Silver, White	None

Local Roots
365 Main Street
Sturbridge, MA

Applicant:
Caregiver Patient Connection LLC
DBA Local Roots NE
910 Boston Post Road
Marlborough, MA 01752

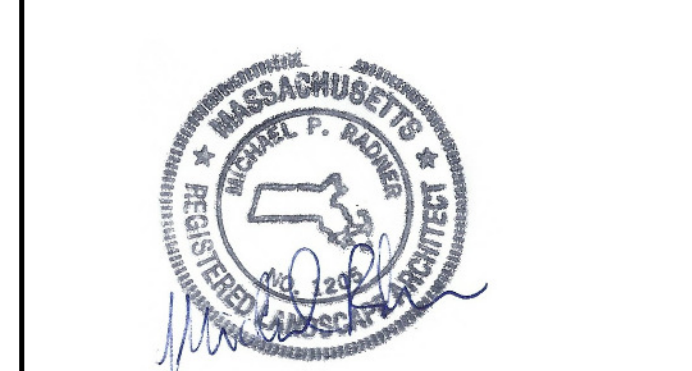
Landscape Architect

Radner Design Associates, Inc.
945 Concord Street, Suite 100
Framingham, MA 01701
508.736.6144
www.RadnerDesign.com

Revision:

Drawn: mr

Scale: 1"=20'-0"



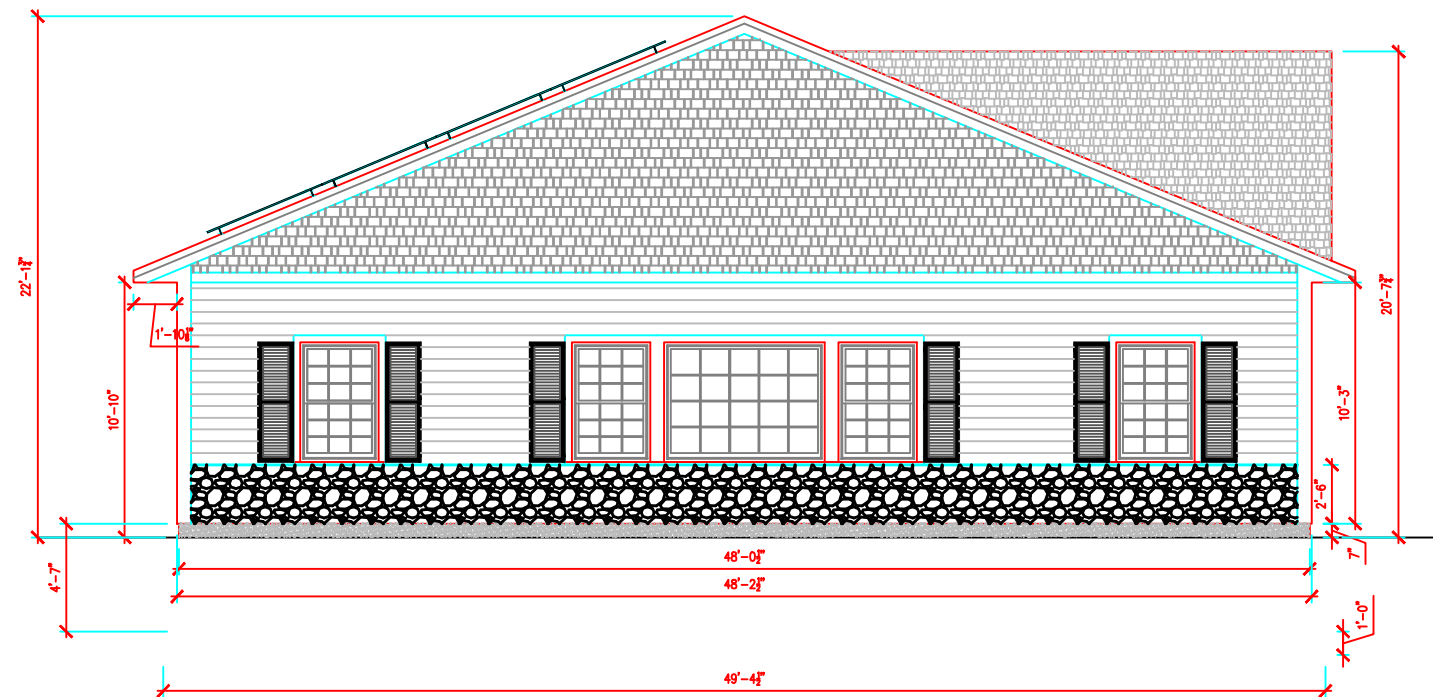
Sheet Name:
Photometric Lighting Plan

Project No.:
20-08

Issue Date:
02.26.2020

Sheet No.:
L2

LOCAL ROOTS
365 MAIN STREET, STURBRIDGE
FRONT ELEVATION



MAIN STREET SIDE

SCALE: 1/4" = 1'

SHEET:

A1.0

OF: 9

FRONT ELEVATION

DATE: 2/20/20

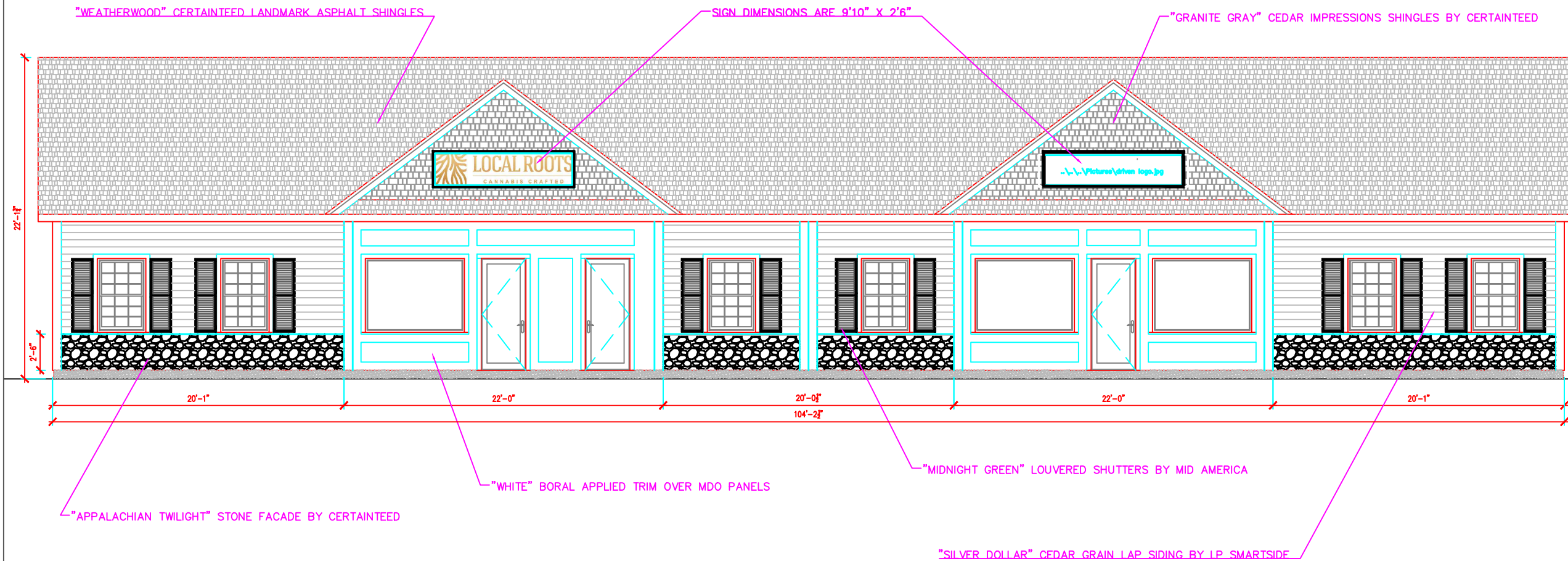
PROPOSED DISPENSARY PLAN
365 MAIN ST. STURBRIDGE, MA

CLIENT:
CAREGIVER PATIENT CONNECTION
287 Chapman Road, Barre, Mass.

DESIGN / BUILD BY:
KEYSTONE DEVELOPMENT
910 BOSTON POST RD. EAST MARLBORO MA. 508-229-7827

REVISIONS	DATE	BY
ELECTRIC PLANS	9/17/19	DV

LOCAL ROOTS
365 MAIN STREET, STURBRIDGE
RIGHT ELEVATION



ENTRANCE/PARKING LOT SIDE

SCALE: 1/4" = 1'

SHEET:

A1.1

OF: 9

RIGHT SIDE ELEVATION

DATE: 2/20/20

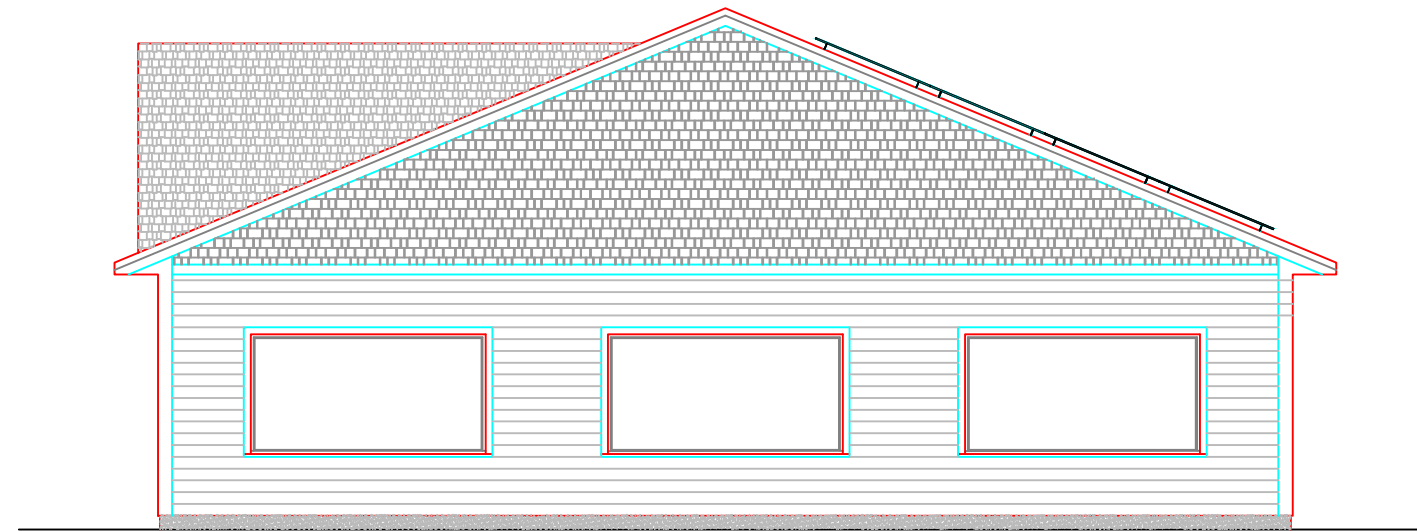
PROPOSED DISPENSARY PLAN
365 MAIN ST. STURBRIDGE, MA

CLIENT:
CAREGIVER PATIENT CONNECTION
287 Chapman Road, Barre, Mass.

DESIGN / BUILD BY:
KEYSTONE DEVELOPMENT
910 BOSTON POST RD. EAST MARLBORO MA. 508-229-7827

REVISIONS	DATE	BY
ELECTRIC PLANS	9/17/19	DV

LOCAL ROOTS
 365 MAIN STREET, STURBRIDGE
 REAR ELEVATION



PARKING LOT SIDE

SCALE: 1/4" = 1'

SHEET:

A1.2

OF: 9

REAR ELEVATION

DATE: 2/20/20

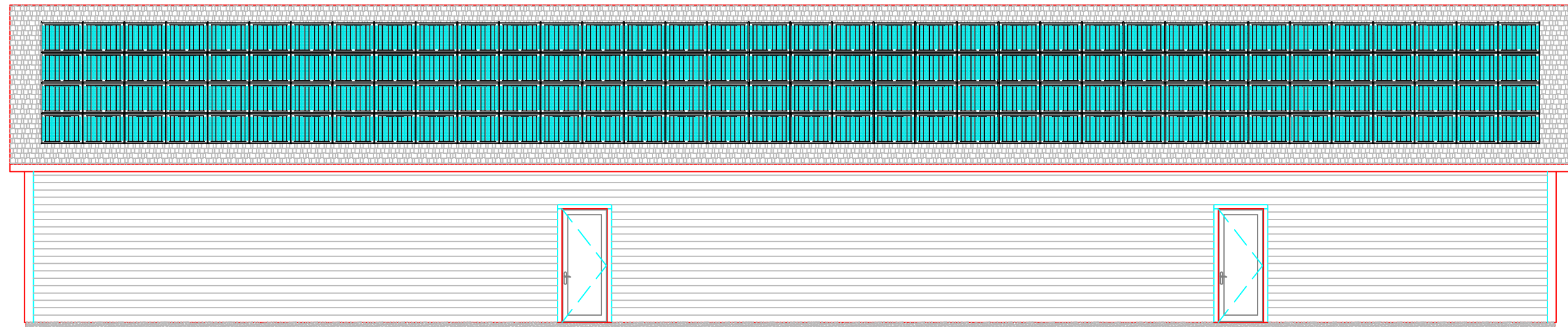
PROPOSED DISPENSARY PLAN
 365 MAIN ST. STURBRIDGE, MA

CLIENT:
 CAREGIVER PATIENT CONNECTION
 287 Chapman Road, Barre, Mass.

DESIGN / BUILD BY:
 KEYSTONE DEVELOPMENT
 910 BOSTON POST RD. EAST MARLBORO MA. 508-229-7827

REVISIONS	DATE	BY
ELECTRIC PLANS	9/17/19	DV

LOCAL ROOTS
 365 MAIN STREET, STURBRIDGE
 LEFT ELEVATION



REAR PARKING LOT SIDE

SCALE: 1/4" = 1'

SHEET:

A1.3

OF: 9

LEFT ELEVATION

DATE: 2/20/20

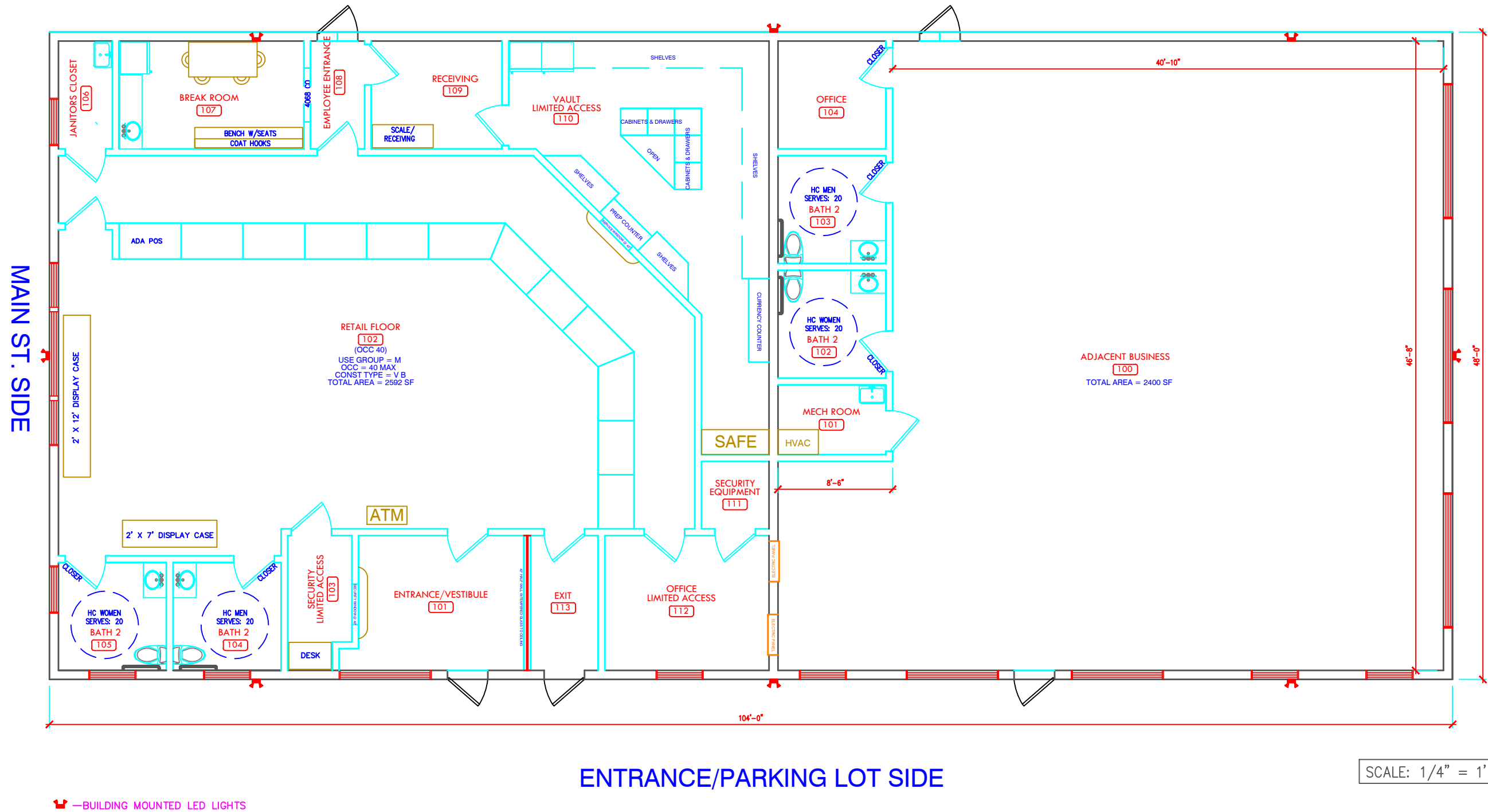
PROPOSED DISPENSARY PLAN
 365 MAIN ST. STURBRIDGE, MA

CLIENT:
 CAREGIVER PATIENT CONNECTION
 287 Chapman Road, Barre, Mass.

DESIGN / BUILD BY:
 KEYSTONE DEVELOPMENT
 910 BOSTON POST RD. EAST MARLBORO MA. 508-229-7827

REVISIONS	DATE	BY
ELECTRIC PLANS	9/17/19	DV

LOCAL ROOTS 365 MAIN STREET, STURBRIDGE FLOOR PLAN



—BUILDING MOUNTED LED LIGHTS

SHEET:
A1.4
OF: 9

1ST FLOOR PLAN
DATE: 9/17/19

**PROPOSED DISPENSARY PLAN
365 MAIN ST. STURBRIDGE, MA**

CLIENT:
CAREGIVER PATIENT CONNECTION
287 Chapman Road, Barre, Mass.

DESIGN / BUILD BY:
KEYSTONE DEVELOPMENT
910 BOSTON POST RD. EAST MARLBORO MA. 508-229-7827

REVISIONS	DATE	BY
ELECTRIC PLANS	9/17/19	DV