

Existing Conditions - Looking Towards Shaws



Shaws & Walgreens Facade - Renovated in 2020



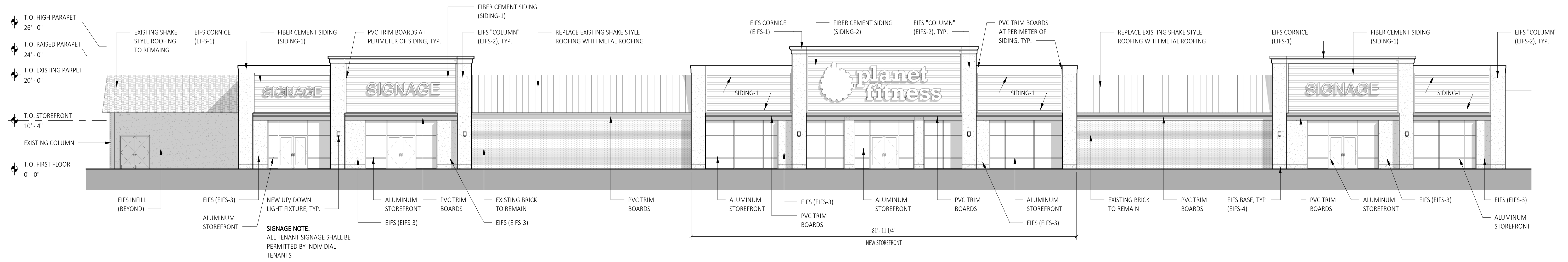
Shaws Facade - Looking Towards Former JC Penney



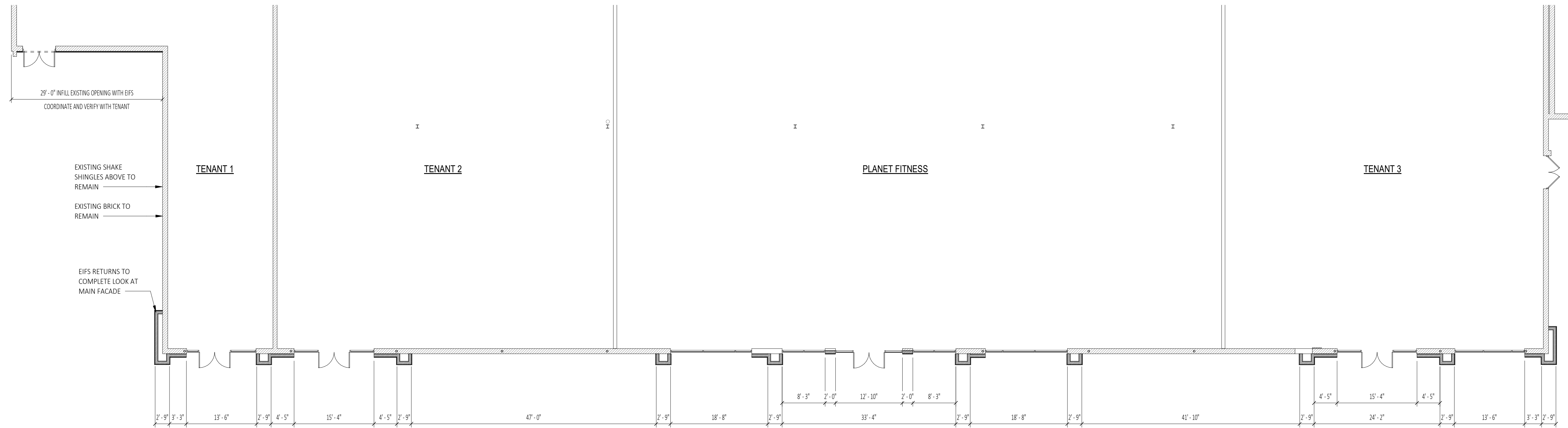
Tractor Supply / Ocean State Job Lots Building (Separate Ownership) - Looking Towards Shaws



Key Name	Description	Manufacturer	Specification Color	Notes
EIFS-1	EIFS FINISH	STO OR EQUAL	PAINTED SW7008 ALABASTER	
EIFS-2	EIFS FINISH	STO OR EQUAL	PAINTED SW7668 MARCH WIND	
EIFS-3	EIFS FINISH	STO OR EQUAL	PAINTED -MEDIUM TONE GREY-	
EIFS-4	EIFS FINISH	STO OR EQUAL	PAINTED - DARK TONE GREY-	
METAL	METAL ROOFING	TBD	COLOR TO BE BLACK	
SIDING-1	FIBER CEMENT SIDING	HARDIE OR EQUAL	COBBLESTONE	
SIDING-2	FIBER CEMENT SIDING	HARDIE OR EQUAL	PAINTED SW7668 MARCH WIND	EXPOSURE TO MATCH SHAWS
STOREFRONT	4-1/2" ALUMINUM SYSTEM	KAWNEER OR EQUAL	COLOR TO BE CLEAR ALUMINUM	1" INSULATED, CLEAR, GLAZING



2 Proposed Elevation
 SCALE: 3/32" = 1'-0"



1 Proposed Storefront Plan
 SCALE: 3/32" = 1'-0"

C2 ARCHITECTURE, PC
 WWW.C2-DESIGNGROUP.COM
 24 AIRPORT ROAD | SCHENECTADY, NY 12302 | 518.320.8250

Schematic Design
 SUBMITTAL / REVISION
 No. _____ DATE: _____

Proposed Elevation
 Tenant Fit-Up for:
Planet Fitness - Sturbridge, MA
 Sturbridge, MA 01566
 178 Main Street

DRAWN BY: C2 Architecture
 DATE: 08/19/2021
 SCALE: AS NOTED
 JOB NO: 2100-02
 SHEET: **SD200**

Copyright © 2021, C2 ARCHITECTURE, PC. The material and ideas contained in this document are confidential and are the proprietary property of C2 ARCHITECTURE, PC. These materials and ideas shall not be released or otherwise made available to any third party, or reproduced in whole or in part, without the express written consent of C2 ARCHITECTURE, PC.

PLOT DATE: 8/19/2021 5:21:22 PM



