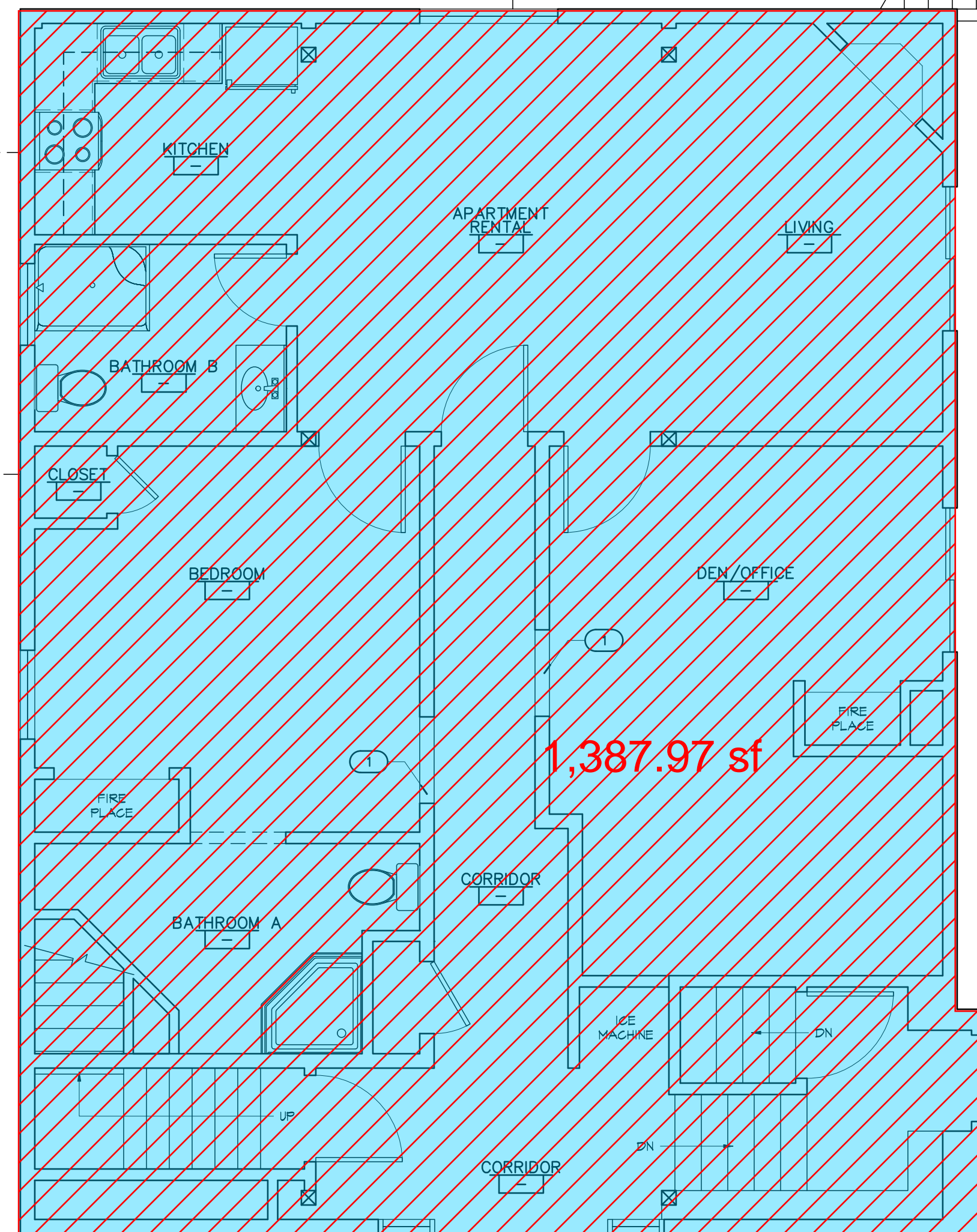


10/3 AT Thomas, September 01, 2022. FIVE RESIDENTIAL/2022-14 COUNTRY INN/CONSTRUCTION/DRAWING SET/CI-A1X PLANS.DWG
 COPYRIGHT 9/1/2022. THESE DRAWINGS MAY NOT BE REPRODUCED WITHOUT THE WRITTEN CONSENT OF ARCHITECTURE ENVIRONMENT LIFE, INC. UNAUTHORIZED REPRODUCTION IS PUNISHABLE BY CIVIL & CRIMINAL PENALTIES UNDER FEDERAL LAW



First Floor:
 Inn: 2,428 s.f.
 Apts. 1,388
 Total: 3,816 s.f.
Second Floor:
 Inn: 1,552
 Apt.: 1,381
 Total: 2,933
Third Floor:
 Inn/Common: 83 + 80 = 143
 Apt.: 671 + 520 = 1,231
 Total: 1,374
Total:
 Inn/Common: 4,123 s.f.
 Apt.: 4 Apartments: 4,000 s.f.

GENERAL KEY NOTES

- EXIST. DOOR(S) SECURED CLOSED
- PROVIDE NEW 9'-0" DOOR AT STAIR TO 3RD FLOOR APARTMENT
- PROVIDE NEW APARTMENT RENTAL COMPLEX - SEE DEMO PLAN FOR DETAILS

UNIT CONVERSION

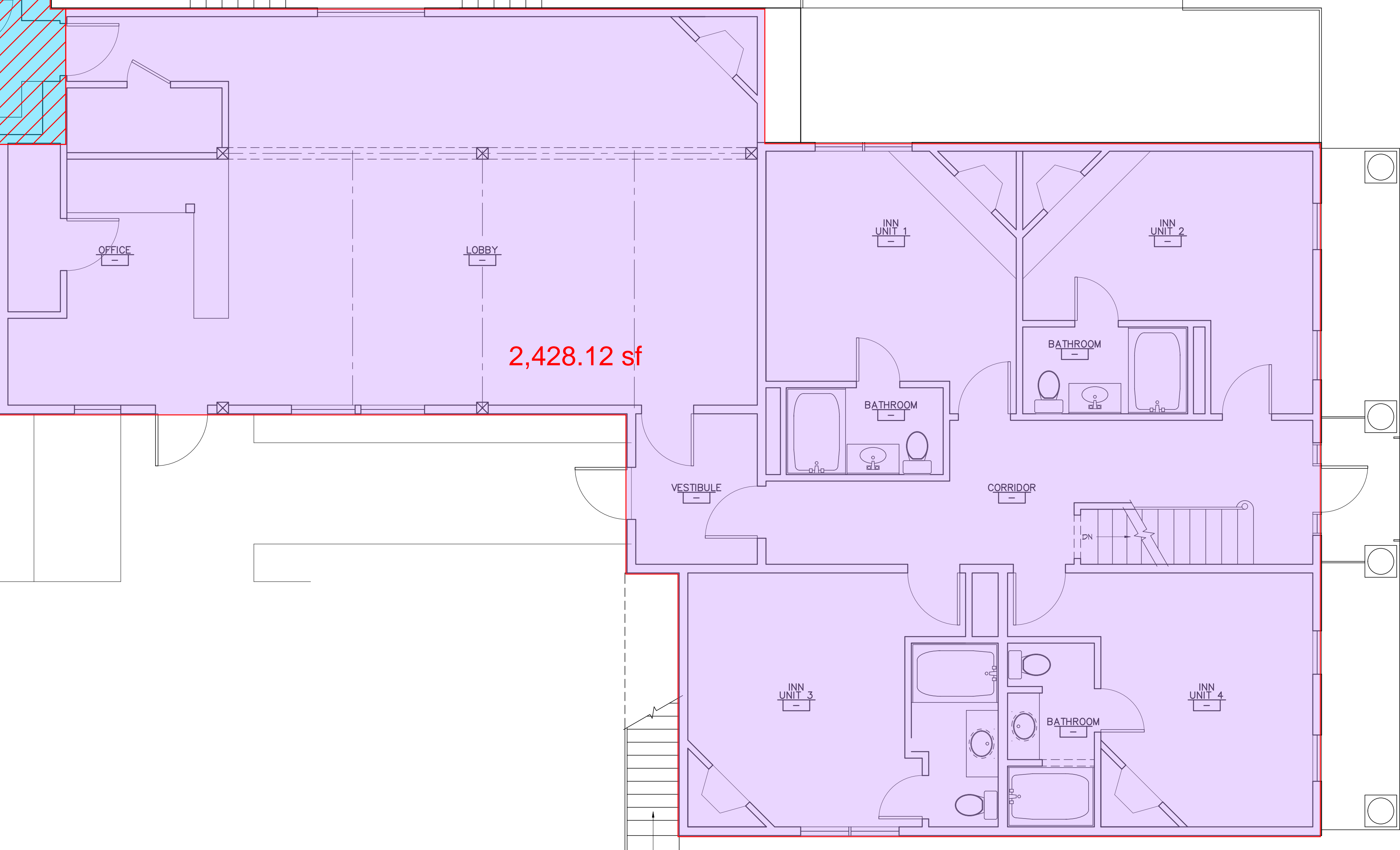
EXISTING		PROPOSED	
FIRST FLOOR	INN UNITS 1	FIRST FLOOR	INN UNITS 4
	APARTMENTS 1		APARTMENTS 1
SECOND FLOOR	INN UNITS 6	SECOND FLOOR	INN UNITS 2
	APARTMENTS 0		APARTMENTS 2
THIRD FLOOR	INN UNITS 2	FIRST FLOOR	INN UNITS 0
	APARTMENTS 2		APARTMENTS 2
TOTAL PROPOSED: 6 INN UNITS + 5 APARTMENT MONTHLY RENTALS			

PLAN LEGEND

GRAPHIC DRAWING CONVENTIONS:

- EXISTING TO REMAIN
- NEW WALL CONSTRUCTION
- EXISTING CONSTRUCTION TO BE REMOVED
- EXISTING/NEW OVERHEAD SOFFIT OR CASED OPENING

*COORDINATE ALL DEMOLITION WITH OTHER DASHED LINES ON THE DRAWINGS REPRESENTING ITEMS OVERHEAD, BEYOND AND OTHERWISE NOTED. IF SCOPE IS UNCLEAR, CONTACT ARCHITECT FOR CLARIFICATION.



1 1ST FLOOR PLAN
 A1.1 SCALE: 1/4"=1'-0"

ArchitectureEL
 Environment Life Inc.
 East Longmeadow, MA
 ph. 413-525-9700
 Harwich Port, MA
 ph. 508-251-9076

KEY PLAN

COUNTRY INN
 530 MAIN STREET
 STURBRIDGE, MA
 PROJECT NAME:

DRAWING REVISION LOG

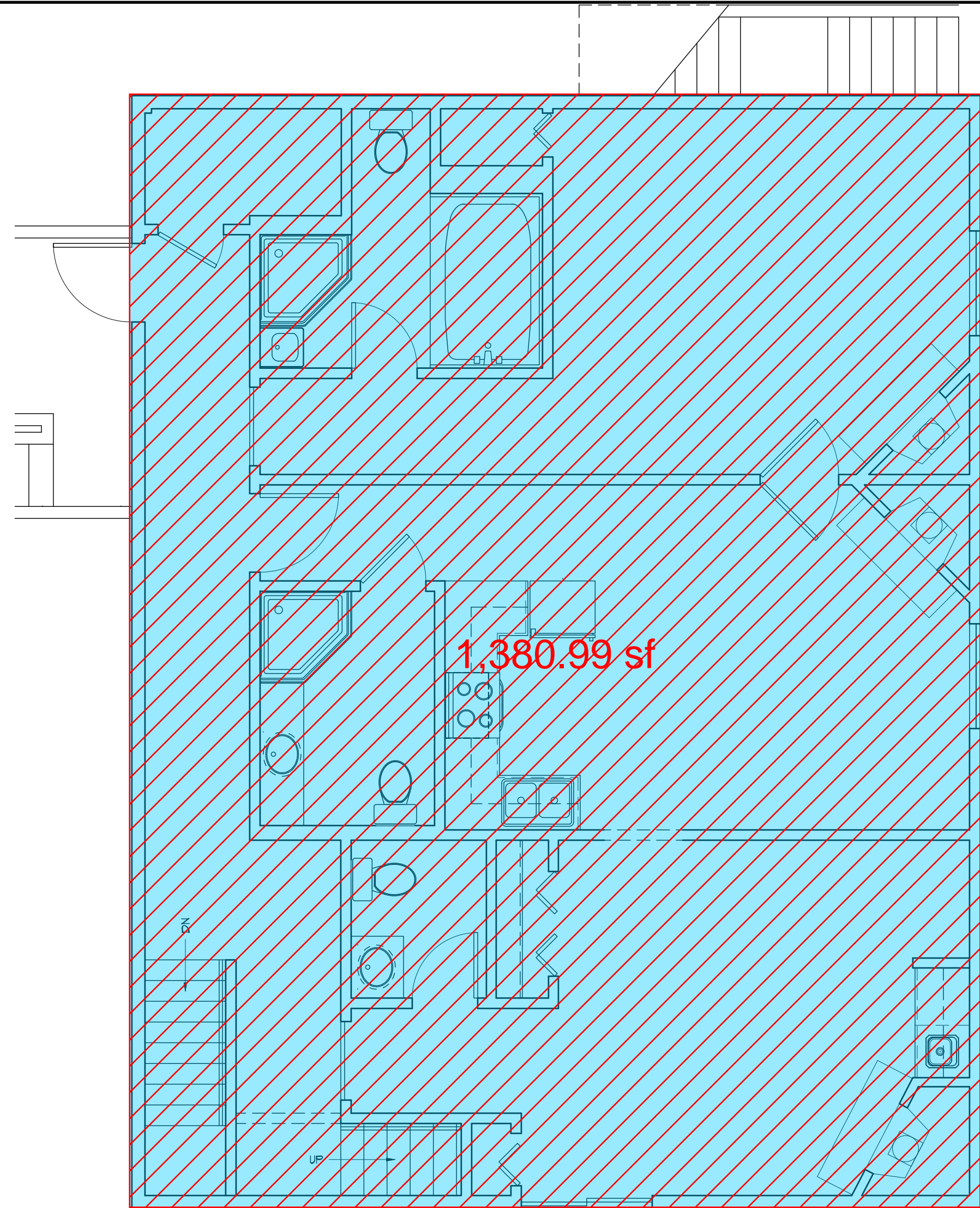
CAD FILE: CI-A1.X PLANS.DWG
 CONTRACT DATE: 9/1/2022
 PLOT DATE: 9/1/2022
 PROJECT NQ022-14
 DRAWN BY: NThomas

PROFESSIONAL SEAL

DRAWING NAME
**PROPOSED
 1ST FLOOR PLANS**

DRAWING NUMBER
A1.1

11/05 AM Thursday, September 01, 2022, F:\RESIDENTIAL\2022-14 COUNTRY INN\CONSTRUCTION\DRAWING SET\CI-A1.X PLANS.DWG
 COPYRIGHT © 2022, THESE DRAWINGS MAY NOT BE REPRODUCED WITHOUT THE WRITTEN CONSENT OF ARCHITECTURE ENVIRONMENT LIFE, INC. UNAUTHORIZED REPRODUCTION IS PUNISHABLE BY CIVIL & CRIMINAL PENALTIES UNDER FEDERAL LAW



GENERAL KEY NOTES

- 1 EXIS. DOOR(S) SECURED CLOSED
- 2 PROVIDE NEW 3'-0" DOOR AT STAIR TO 3RD FLOOR APARTMENT
- 3 PROVIDE NEW APARTMENT RENTAL COMPLEX - SEE DEMO PLAN FOR DETAILS

UNIT CONVERSION

EXISTING		PROPOSED	
FIRST FLOOR	INN UNITS 7	FIRST FLOOR	INN UNITS 4
	APARTMENTS 1		APARTMENTS 1
SECOND FLOOR	INN UNITS 6	SECOND FLOOR	INN UNITS 2
	APARTMENTS 0		APARTMENTS 2
THIRD FLOOR	INN UNITS 2	FIRST FLOOR	INN UNITS 0
	APARTMENTS 0		APARTMENTS 2
TOTAL PROPOSED: 6 INN UNITS + 5 APARTMENT MONTHLY RENTALS			

PLAN LEGEND

GRAPHIC DRAWING CONVENTIONS:

- [Solid line] = EXISTING TO REMAIN
- [Dashed line] = NEW WALL CONSTRUCTION
- [Dotted line] = EXISTING CONSTRUCTION TO BE REMOVED*
- [Dash-dot line] = EXISTING NEW OVERHEAD SOFFIT OR CASSED OPENING

*COORDINATE ALL DEMOLITION WITH OTHER DASHED LINES ON THE DRAWINGS REPRESENTING ITEMS OVERHEAD, BEYOND AND OTHERWISE NOTED. IF SCOPE IS UNCLEAR, CONTACT ARCHITECT FOR CLARIFICATION.

ArchitectureEL
 Environment Life Inc.

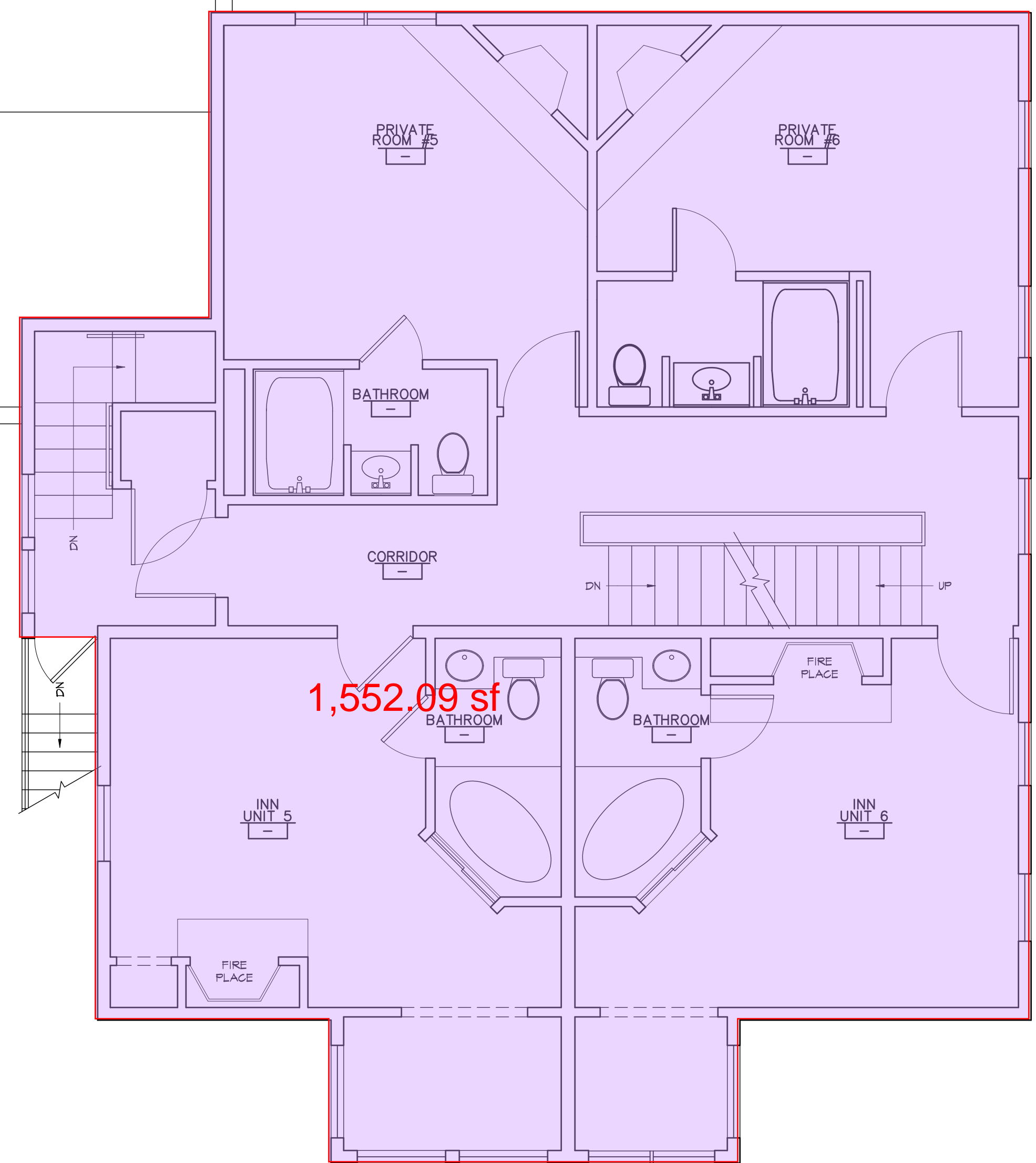
East Longmeadow, MA
 ph. 413-525-9700

Harwich Port, MA
 ph. 508-251-9076

KEY PLAN

COUNTRY INN
 530 MAIN STREET
 STURBRIDGE, MA

PROJECT NAME:



1 2ND FLOOR PLAN
 A1.2 SCALE: 1/4"=1'-0"

DRAWING REVISION LOG

CAD FILE: CI-A1.X PLANS.DWG

CONTRACT DATE: 9/1/2022

PLOT DATE: 9/1/2022

PROJECT NQ022-14

DRAWN BY: NThomas

PROFESSIONAL SEAL

No. 9819
 E. LONGMEADOW
 MASS.
 ARCHITECTURE ENVIRONMENT LIFE, INC.

Kevin J. Firth

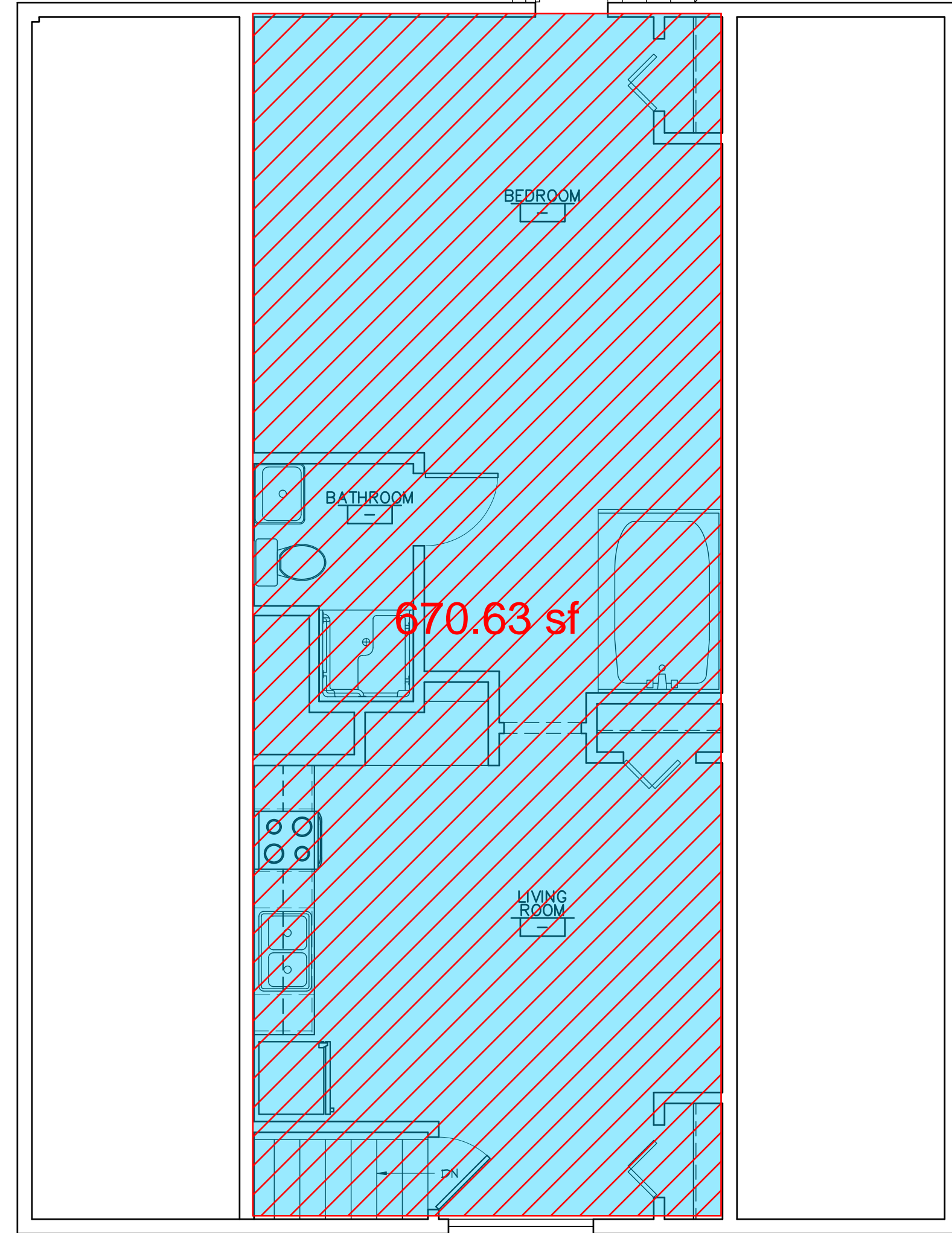
DRAWING NAME

2ND FLOOR PLANS

DRAWING NUMBER

A1.2

11/05 AM Thursday, September 01, 2022, F:\RESIDENTIAL\2022-14 COUNTRY INN\CONSTRUCTION\DRAWING SET\CI-A1.X PLANS.DWG
 COPYRIGHT © 2022, THESE DRAWINGS MAY NOT BE REPRODUCED WITHOUT THE WRITTEN CONSENT OF ARCHITECTURE ENVIRONMENT LIFE, INC. UNAUTHORIZED REPRODUCTION IS PUNISHABLE BY CIVIL & CRIMINAL PENALTIES UNDER FEDERAL LAW



GENERAL KEY NOTES

- 1 EXIS. DOOR(S) SECURED CLOSED
- 2 PROVIDE NEW 3'-0" DOOR AT STAIR TO 3RD FLOOR APARTMENT
- 3 PROVIDE NEW APARTMENT RENTAL COMPLEX - SEE DEMO PLAN FOR DETAILS

UNIT CONVERSION

EXISTING		PROPOSED	
FIRST FLOOR	INN UNITS 7 APARTMENTS 1	FIRST FLOOR	INN UNITS 4 APARTMENTS 1
SECOND FLOOR	INN UNITS 6 APARTMENTS 0	SECOND FLOOR	INN UNITS 2 APARTMENTS 2
THIRD FLOOR	INN UNITS 2 APARTMENTS 0	FIRST FLOOR	INN UNITS 0 APARTMENTS 2
TOTAL PROPOSED: 6 INN UNITS + 5 APARTMENT MONTHLY RENTALS			

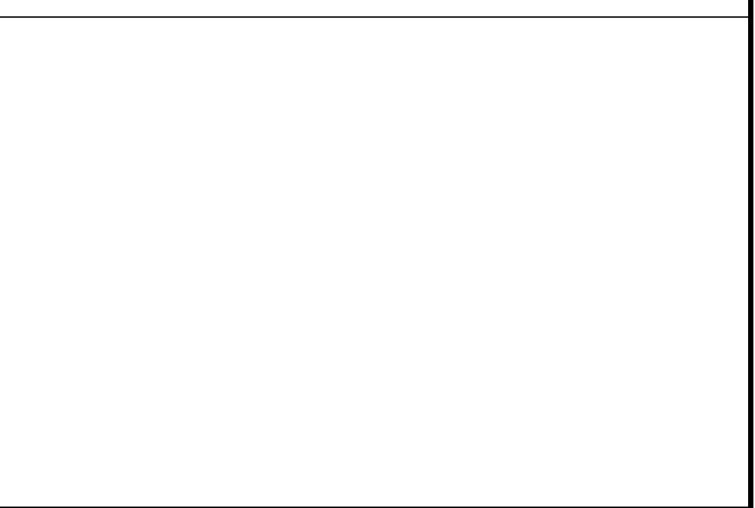
PLAN LEGEND

- GRAPHIC DRAWING CONVENTIONS:
- [Solid Line] = EXISTING TO REMAIN
 - [Dotted Line] = NEW WALL CONSTRUCTION
 - [Dashed Line] = EXISTING CONSTRUCTION TO BE REMOVED*
 - [Dashed Line] = EXISTING NEW OVERHEAD SOFFIT OR CASSED OPENING

*COORDINATE ALL DEMOLITION WITH OTHER DASHED LINES ON THE DRAWINGS REPRESENTING ITEMS OVERHEAD, BEYOND AND OTHERWISE NOTED. IF SCOPE IS UNCLEAR, CONTACT ARCHITECT FOR CLARIFICATION.

East Longmeadow, MA
ph. 413-525-9700
Harwich Port, MA
ph. 508-251-9076

KEY PLAN



COUNTRY INN
530 MAIN STREET
STURBRIDGE, MA

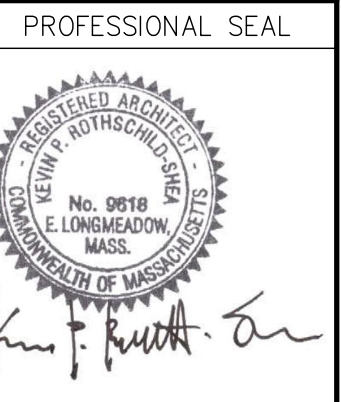
PROJECT NAME:

DRAWING REVISION LOG

NO.	DESCRIPTION

CAD FILE: CI-A1.X PLANS.DWG

CONTRACT DATE: 9/1/2022
 PLOT DATE: 9/1/2022
 PROJECT NQ022-14
 DRAWN BY: NThomas



DRAWING NAME

**PROPOSED
3RD FLOOR PLANS**

DRAWING NUMBER

A1.3

1 3RD FLOOR PLAN
A1.3 SCALE: 1/4"=1'-0"

