

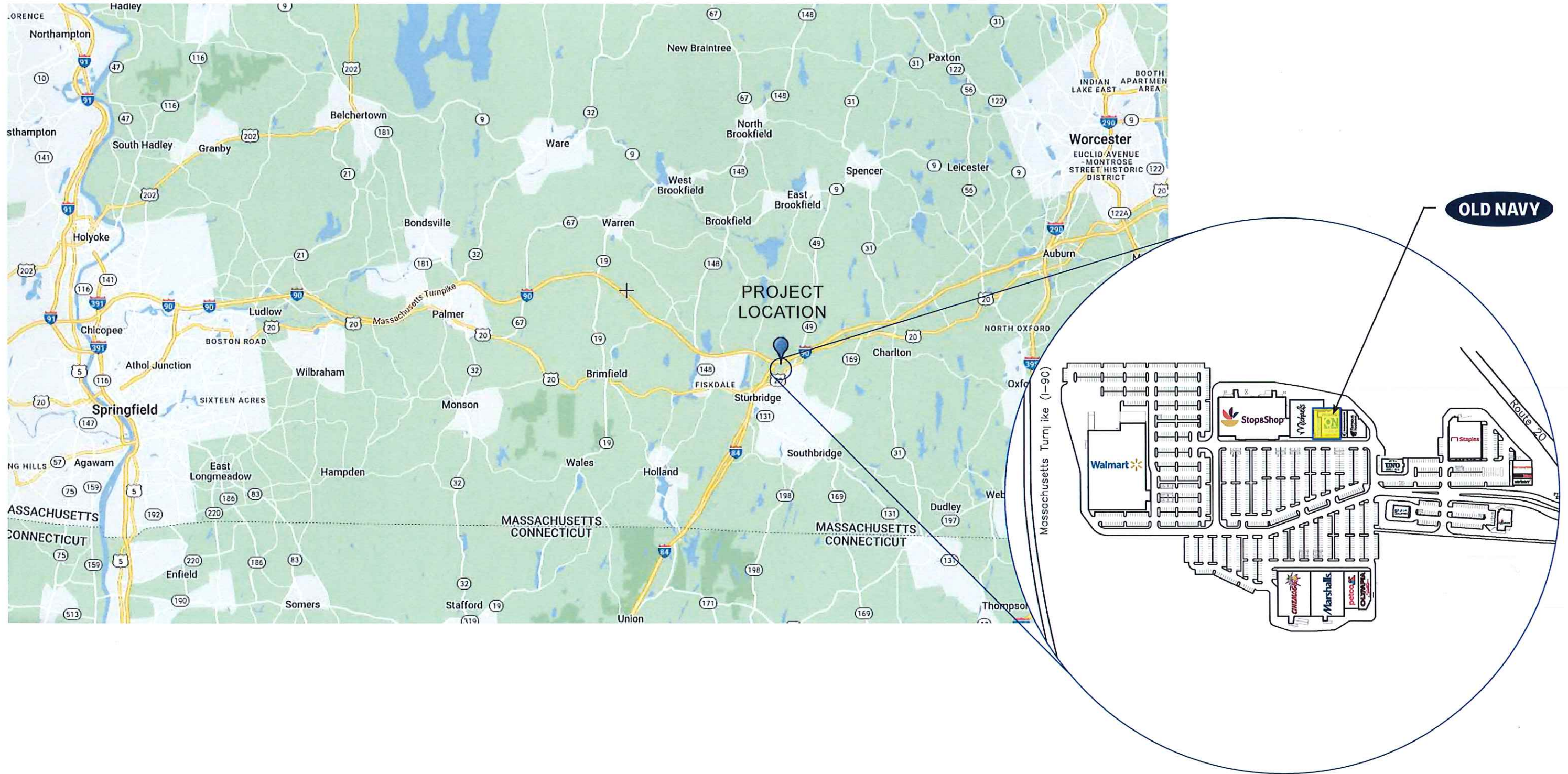


EXTERIOR STOREFRONT DESIGN REVIEW
STURBRIDGE, MASSACHUSETTS

SHREMSHOCK ARCHITECTS
AUGUST 2022

PROJECT LOCATION

STURBRIDGE, THE CENTER AT HOBBS BROOK



STORE EXTERIOR

EXISTING CONDITIONS : SOUTHERN AVENUE



STORE EXTERIOR

SURROUNDING AREA : SOUTHERN AVENUE

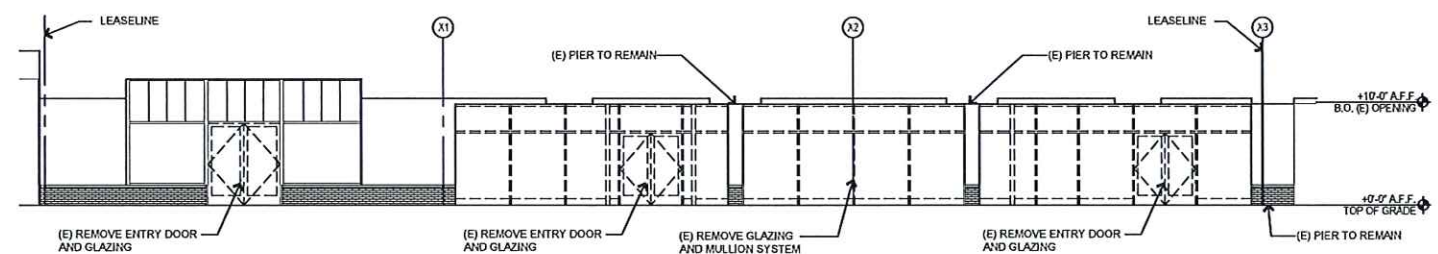


NEW STORE
OLD NAVY
 GAP INC.
 STORE DEVELOPMENT
 2 FOLSOM STREET
 SAN FRANCISCO, CA 94105

REPS. ID.: 0000143484
 STORE NUMBER: 0925
 STORE LOCATION: THE CENTER AT HOBBS BROOK
 100 CHARLTON ROAD
 STURBRIDGE, MA 01566

DESIGN TYPE: P3
 GENERATION: 22012
 PROTOTYPE DATE: 08/13/2021
 OPENING: 2022

CONSULTANT INFO:
SHREMSHOCK
 Shremshock Architects, Inc.
 7775 Plaza Parkway Suite 200 New Albany, OH 43054
 t: 614.848.4200 | f: 614.848.4600 | shremshock.com
 Donald S. Shremshock, Architect
 Timothy J. Shremshock, Architect



DEMOLITION ELEVATION

SCALE 2
 1/8" = 1'-0"

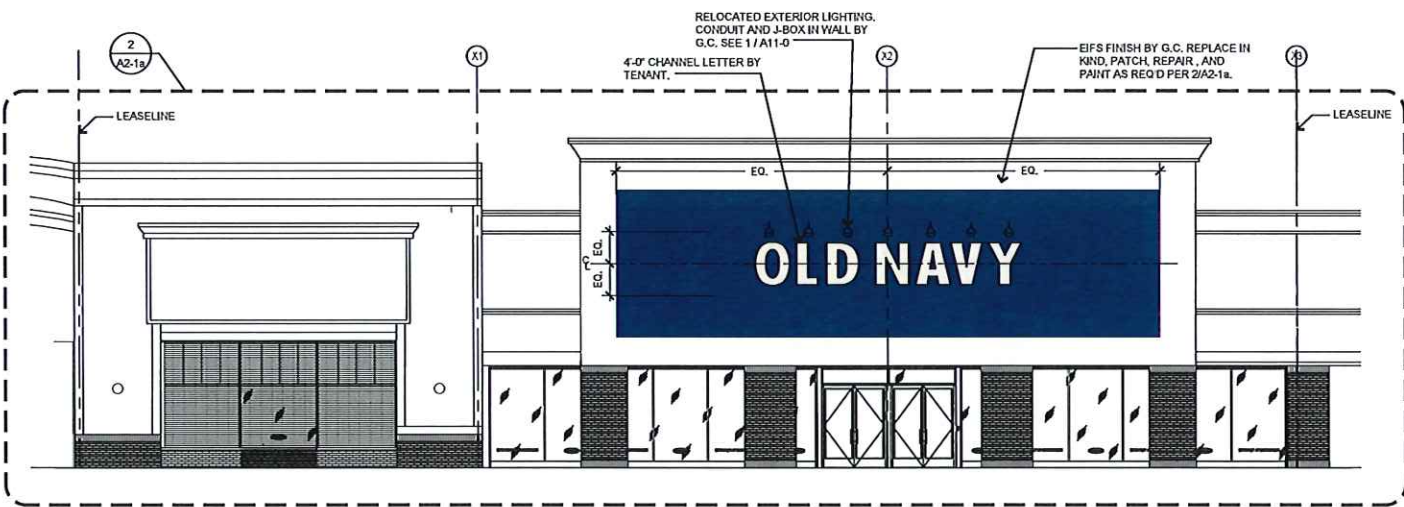
LOCATION: (STREET)

PYLON SIGN BY LL

OLD NAVY LETTERS TO BE AS BIG AS POSSIBLE TO FIT IN PANEL
 LOGO PANEL: ONE PANEL EACH SIDE OF PYLON SIGN. COORDINATE AND VERIFY WITH TENANT COORDINATE BEFORE INSTALLATION



PAINT NOTE "A":
 COATING SYSTEM FOR PAINTING (E) STEEL BEAMS - EPOXY-MODIFIED LATEX SYSTEM.
 a. PAINT TINTED TO MATCH PMS 2955C (OLD NAVY BLUE).
 b. PRIME COAT: PRIMER, EPOXY, ANTI-CORROSIVE, FOR METAL.
 1. SHERWIN WILLIAMS MACROPOXY 645-100, 658-600 SERIES, AT 5.0 TO 10 MILS (0.127 TO 0.254 MM) DRY, PER COAT.
 c. TWO (2) FINISH COAT: HIGH PERFORMANCE ACRYLIC.
 1. SHERWIN WILLIAMS PRO INDUSTRIAL ACRYLIC, 955-604 SERIES, AT 2.1 TO 4.2 MILS (0.051 TO 0.102 MM) DRY, PER COAT.



PYLON SIGN

SCALE 10
 1/8" = 1'-0"

FRONT ELEVATION

SCALE 1
 1/8" = 1'-0"

PROFESSIONAL STAMP:

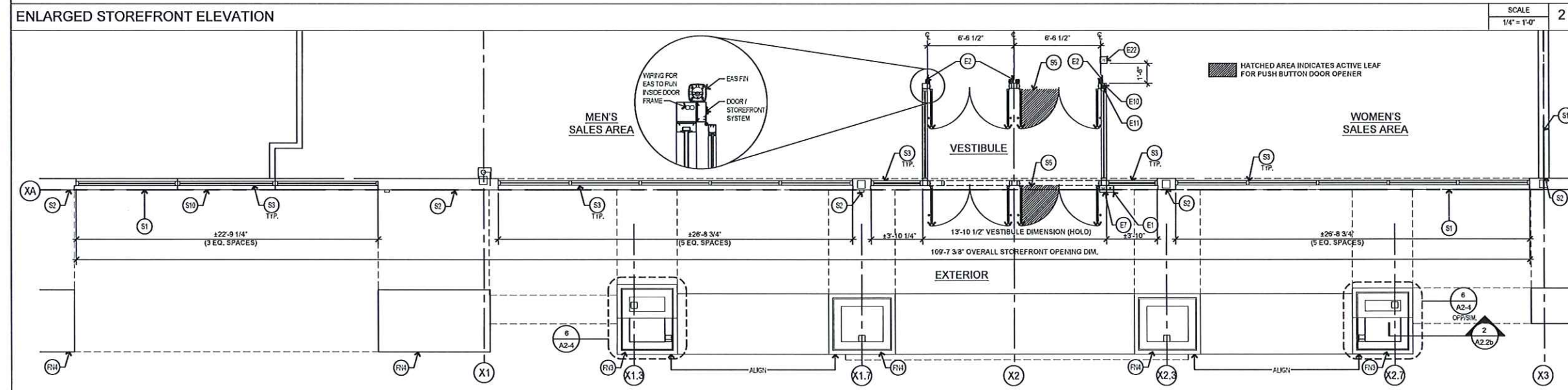
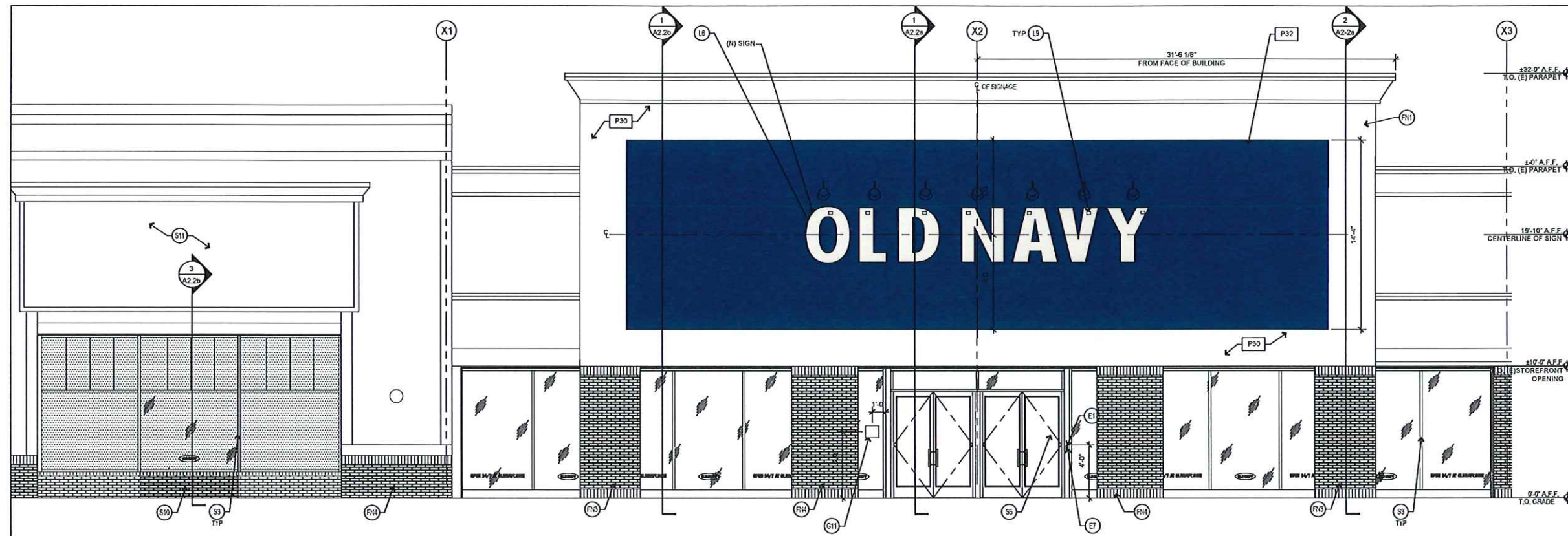
ISSUE TYPE:
 DD/FEASIBILITY: 04/08/2022
 LANDLORD: 05/05/2022
 BID: 05/25/2022
 PERMIT: 06/01/2022

REVISIONS:
 FD: 08/05/2022

DRAWN BY: BAS/JAA
 A/E JOB NUMBER: 220126

TITLE SHEET:
 EXTERIOR ELEVATIONS

SHEET NUMBER:
A2-0



ENLARGED STOREFRONT PLAN SCALE 1/4" = 1'-0" 1

KEY	DESCRIPTION	DET./SHT.	KEY	DESCRIPTION	DET./SHT.	KEY	DESCRIPTION	DET./SHT.	KEY	DESCRIPTION	DET./SHT.	KEY	DESCRIPTION	DET./SHT.
KEYNOTES														
SHELL														
(S1)	(E) LEASE LINE.	-	(S3)	ENTRY DOORS BY G.C.	-	(F1)	FINISHES	-	(E1)	ELECTRICAL	-	(E11)	1" CONDUIT FOR ADA BUTTONS.	-
(S2)	(E) NEUTRAL PIER TO REMAIN	-	(S4)	REMOVE (E) SIGN AND LIGHTING, PATCH AND REPAIR AS REQ'D TO MATCH (E) FINISH	-	(F2)	EXTERIOR FINISH SYSTEM BY G.C., TO MATCH EXISTING	-	(E2)	DOOR BUZZER - MOUNTED @ 48" A.F.F. BY G.C.	SEE ELEC.	(E2)	ADA PUSH BUTTON DOOR OPERATOR BY G.C. MOUNTED TO BOLLARD WITH T.O. BUTTON AT 48" MAX.	-
(S3)	ALUMINUM STOREFRONT SYSTEM BY G.C.	-	(S5)	NEW BRICK INFILL TO MATCH EXISTING	-	(F3)	(N) CONCRETE SYSTEM WALL BY G.C.	-	(E3)	CHECKPOINT EVOLVE ANTENNA MODEL 310 (TYP. DF 3) BY TENANT, BOLTED TO STOREFRONT MULLION BY G.C.	SEE ELEC.	(E3)	LIGHTING	GRAPHICS
(S4)	CONCRETE CURB BY G.C. AS REQUIRED	-	(S6)	REMOVE (E) SIGN AND LIGHTING, PATCH AND REPAIR AS REQ'D TO MATCH (E) FINISH	-	(F4)	(N) PLASTER TO MATCH EXISTING BY G.C.	-	(E4)	ADA PUSH BUTTON DOOR OPERATOR BY G.C. MOUNTED TO STOREFRONT WITH T.O. BUTTON AT 48" MAX.	SEE ELEC.	(E4)	NON-LIT WHITE 'OLD NAVY' CHANNEL LETTERS.	1/A11-0
			(S7)	REMOVE (E) SIGN AND LIGHTING, PATCH AND REPAIR AS REQ'D TO MATCH (E) FINISH	-	(F5)	(E) PLASTER TO REMAIN	-	(E5)	1" CONDUIT FOR EAS BY G.C.	SEE ELEC.	(E5)	NO SMOKING GRAPHIC (EXTERIOR) @ 5'-0" A.F.F.	2 / A12-0

NEW STORE

OLD NAVY

GAP INC.
STORE DEVELOPMENT
2 FOLSOM STREET
SAN FRANCISCO, CA 94105

REPS. ID: 0000143484

STORE NUMBER: 0925

STORE LOCATION: THE CENTER AT HOBBS BROOK
100 CHARLTON ROAD
STURBRIDGE, MA 01566

DESIGN TYPE: P3
GENERATION: 22Q12
PROTOTYPE DATE: 08/13/2021
OPENING: 2022

CONSULTANT INFO:

SHREMSHOCK
Shremshock Architects, Inc.
1775 Faber Place, Suite 202 New Albany, OH 43054
1.514.644.4550 | 1.514.943.6033 | shremshock.com
Dorell S. Shremshock, AIA, LEED
Trinity A. Shremshock, Architect

SCALE 1/4" = 1'-0" 2

SCALE 1/4" = 1'-0" 1

ISSUE TYPE:

DD FEASIBILITY: 04/08/2022
LANDLORD: 05/06/2022
BID: 05/25/2022
PERMIT: 06/01/2022

REVISIONS:

FD: 08/05/2022

DRAWN BY: BAS/JAA
A/E JOB NUMBER: 220128

TITLE SHEET:
ENLARGED STOREFRONT
PLAN & ELEVATION

SHEET NUMBER:
A2-1a

NEW STORE



GAP INC.
STORE DEVELOPMENT
2 FOLSON STREET
SAN FRANCISCO, CA 94105

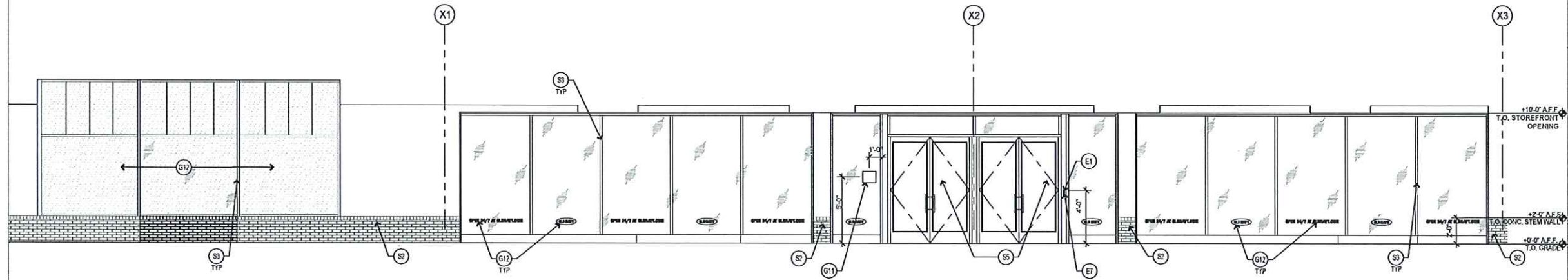
REPS. I.D.: 0000143484
STORE NUMBER: 0925
STORE LOCATION: THE CENTER AT HOBBS BROOK
100 CHARLTON ROAD
STURBRIDGE, MA 01586

DESIGN TYPE: P3
GENERATION: 22012
PROTOTYPE DATE: 08/13/2021
OPENING: 2022

CONSULTANT INFO:



PROFESSIONAL STAMP:



ENLARGED STOREFRONT ELEVATION SCALE 1/4" = 1'-0" 1

KEY	DESCRIPTION	DET./SHT.	KEY	DESCRIPTION	DET./SHT.	KEY	DESCRIPTION	DET./SHT.	KEY	DESCRIPTION	DET./SHT.	KEY	DESCRIPTION	DET./SHT.
(S)	LEASE LINE.	-	(S)	ENTRY DOORS BY G.C.	-	(E)	DOOR BUZZER - MOUNTED @ 48" A.F.F. BY G.C.	SEE ELEC.	(G)	CONCRETE STAIR WALL BY G.C.	-	(L)	CONCRETE STAIR WALL BY G.C.	-
(S)	NEUTRAL PIER TO REMAIN	-	(F)	EXTERIOR FINISH SYSTEM BY G.C.	-	(L)	CONCRETE STAIR WALL BY G.C.	-	(L)	CONCRETE STAIR WALL BY G.C.	-	(L)	CONCRETE STAIR WALL BY G.C.	-
(S)	ALUMINUM STOREFRONT SYSTEM BY G.C.	-	(F)	EXTERIOR FINISH SYSTEM BY G.C.	-	(L)	CONCRETE STAIR WALL BY G.C.	-	(L)	CONCRETE STAIR WALL BY G.C.	-	(L)	CONCRETE STAIR WALL BY G.C.	-
(S)	CONCRETE CURB BY G.C. AS SHOWN	-	(F)	EXTERIOR FINISH SYSTEM BY G.C.	-	(L)	CONCRETE STAIR WALL BY G.C.	-	(L)	CONCRETE STAIR WALL BY G.C.	-	(L)	CONCRETE STAIR WALL BY G.C.	-

KEYNOTES

ISSUE TYPE:
DD FEASIBILITY: 04/08/2022
LANDLORD: 05/09/2022
BID: 05/25/2022
PERMIT: 06/24/2022

REVISIONS:

DRAWN BY: BAS/JAA
A/E JOB NUMBER: 220126

TITLE SHEET:
ENLARGED STOREFRONT ELEVATION

SHEET NUMBER: 6 & 10 / A11-4

A2-1b

STORE EXTERIOR

PERSPECTIVE 1



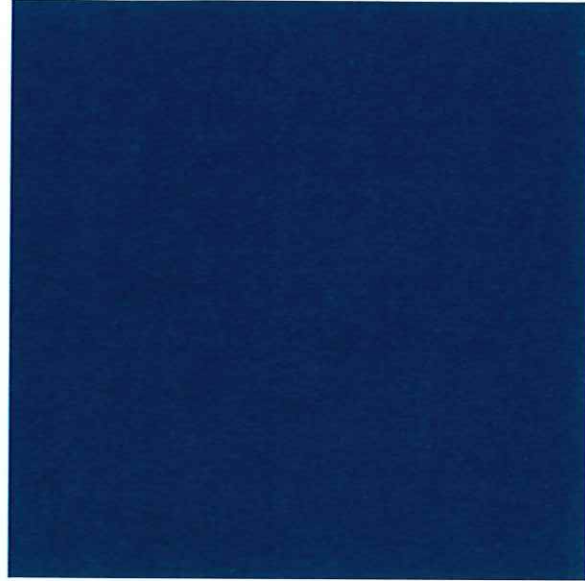
STORE EXTERIOR

PERSPECTIVE 2



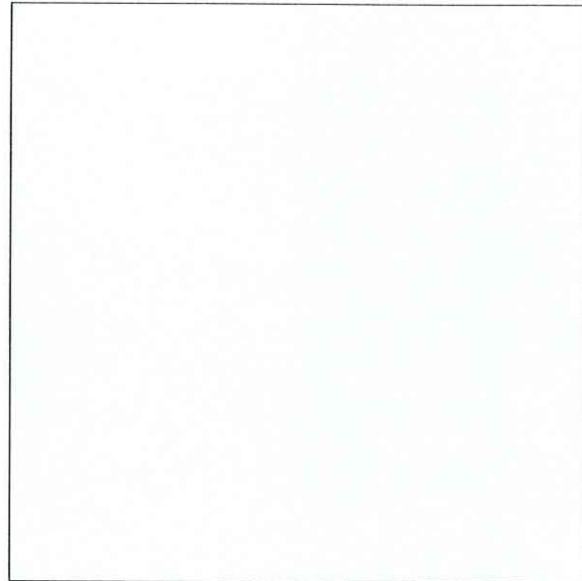
STORE EXTERIOR

MATERIALS



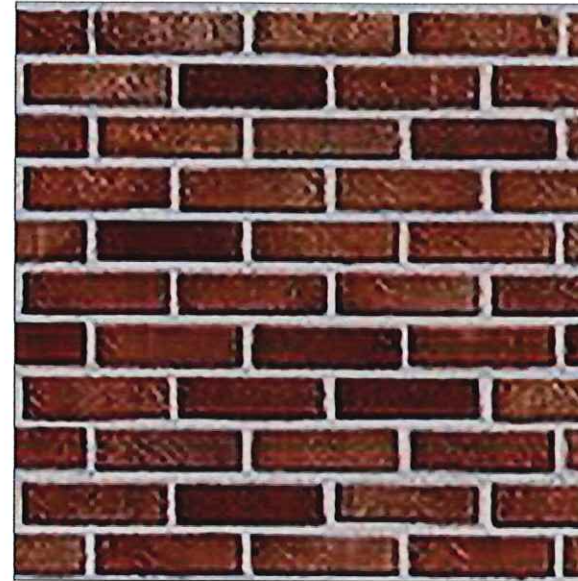
NEW EXTERIOR LATEX PAINT

APPLIED TO EIFS
"OLD NAVY BLUE"
PANTONE 2955C

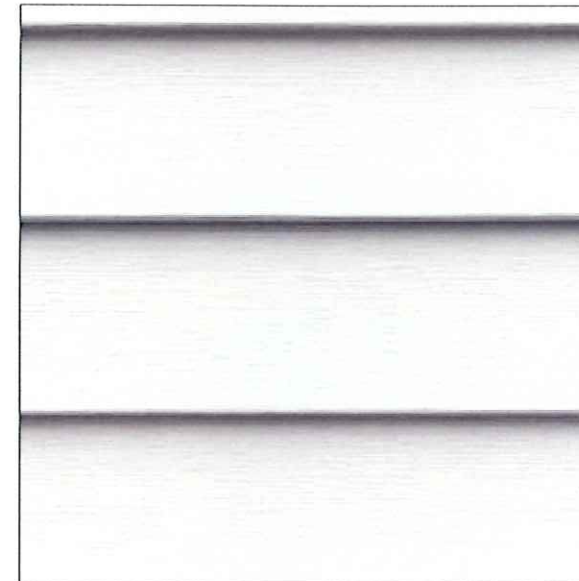


NEW EXTERIOR LATEX PAINT

APPLIED TO EIFS
COLOR MATCH SHERWIN
WILLIAMS TO BENJAMIN MOORE
DISTANT GRAY OC-68



EXISTING BRICK TO REMAIN



EXISTING SIDING TO REMAIN



STOREFRONT MULLION TO
MATCH EXISTING



REPRESENTATION OF EIFS
MATERIAL TEXTURE
TO BE DETERMINED PER G.C.

STORE EXTERIOR

PAINT CUT SHEETS

102.07

Resilience® Exterior Latex Flat

K42-Series



CHARACTERISTICS

Resilience Exterior is a high quality exterior finish with MoistureGuard™ Technology for excellent early moisture resistance. This product, which has improved resistance to early dirt pick up, is recommended for use on aluminum and vinyl siding, wood siding, clapboard, shakes, shingles, plywood, masonry, and metal down to a surface and air temperature of 35°F.

VinylSafe™ paint colors allow you the freedom to choose from 100 color options, including a limited selection of darker colors formulated to resist warping or buckling when applied to a sound, stable vinyl substrate.

Color: Most Colors
Coverage: 350-400 sq. ft. per gallon @ 4 mils wet; 1.6 mils dry

Drying Time, @ 50% RH:
@ 35-45°F @ 45°F +
Touch: 2 hours 2 hours
Recoat: 24-48 hours 4 hours

Drying and recoat times are temperature, humidity, and film thickness dependent

Finish: 0-5 units @ 85°

Tinting with CCE only:

Base:	oz per gallon	Strength:
Extra White	0-7	SherColor
Deep Base	4-12	SherColor
Ultradeep Base	10-12	SherColor
Light Yellow	0-12	SherColor
Primary Red	0-12	SherColor
Vivid Yellow	0-12	SherColor

Extra White K42W00051
(may vary by color)

VOC (less exempt solvents):
less than 50 grams per litre; 0.42 lbs. per gallon

As per 40 CFR 59.406
Volume Solids: 39 ± 2%
Weight Solids: 57 ± 2%
Weight per Gallon: 11.84 lbs
Flash Point: N/A
Vehicle Type: 100% Acrylic
Shelf Life: 36 months unopened
WVP Perms (US) 30.41 grains/(hr ft² in Hg)

Mildew Resistant
This coating contains agents which inhibit the growth of mildew on the surface of this coating film.

COMPLIANCE

As of 08/27/2020, Complies with:

OTC	Yes
OTC Phase II	Yes
SCAQMD	Yes
CARB	Yes
CARB SCM 2007	Yes
Canada	Yes
LEED® v4 & v4.1 Emissions	N.A.
LEED® v4 & v4.1 VOC	Yes
EPD-NSF® Certified	N.A.
MIR-Manufacturer Inventory	N.A.
MPI®	Yes

APPLICATION

When the air temperature is at 35°F, substrates may be colder; prior to painting, check to be sure the air, surface, and material temperature are above 35°F and at least 5°F above the dew point. Avoid using if rain or snow is expected within 1-1½ hours.

Do not apply at air or surface temperatures below 35°F or when air or surface temperatures may drop below 35°F within 48 hours.

No reduction necessary.

Brush: Use a nylon-polyester brush.

Roller: Use a high quality 3/8-3/4 inch nap synthetic roller cover.

For specific brushes and rollers, please refer to our Brush and Roller Guide on Sherwin-Williams.com

Spray—Airless Pressure Tip 2000 p.s.i. .015-.019 inch

APPLICATION TIPS

Make sure product is completely agitated (mechanically or manually) before use.

SPECIFICATIONS

Aluminum & Aluminum Siding¹, Galvanized Steel¹

2 coats Resilience Exterior Latex

Concrete Block, CMU, Split face Block

1 coat Loxon Acrylic Block Surfacer

2 coats Resilience Exterior Latex

Brick, Stucco, Cement, Concrete

1 coat Loxon Concrete and Masonry Primer² or

Loxon Conditioner²

2 coats Resilience Exterior Latex

Cement Composition Siding/Panels

1 coat Loxon Concrete and Masonry Primer³ or

Loxon Conditioner²

2 coats Resilience Exterior Latex

Plywood

1 coat Exterior Latex Primer

2 coats Resilience Exterior Latex

***Vinyl Siding**

2 coats Resilience Exterior Latex

Wood, Composition Board (Cedar, Redwood)⁴

1 coat Exterior Oil-Based Wood Primer²

2 coats Resilience Exterior Latex

¹ On large expanses of metal siding, the air, surface, and material temperatures must be 50°F or higher.

² Not for use at temperatures under 50°F. See specific primer label for that product's application conditions.

³ Not for use at temperatures under 40°F. See specific primer label for that product's application conditions.

⁴ Knots and some woods, such as redwood and cedar, contain a high amount of tannin, a colored wood extract. For best results on these woods, use a coat of Exterior Oil-Based Wood Primer.

Other primers may be appropriate.

When repainting involves a drastic color change, a coat of primer will improve the hiding performance of the topcoat color.

Resilience® Exterior Latex Flat

SURFACE PREPARATION

WARNING! Removal of old paint by sanding, scraping or other means may generate dust or fumes that contain lead. Exposure to lead dust or fumes may cause brain damage or other adverse health effects, especially in children or pregnant women. Controlling exposure to lead or other hazardous substances requires the use of proper protective equipment, such as a properly fitted respirator (NIOSH approved) and proper containment and cleanup. For more information, call the National Lead Information Center at 1-800-424-LEAD (in US) or contact your local health authority.

Remove all surface contamination by washing with an appropriate cleaner, rinse thoroughly and allow to dry. Existing peeled or checked paint should be scraped and sanded to a sound surface. Glossy surfaces should be sanded dull. Stains from water, smoke, ink, pencil, grease, etc. should be sealed with the appropriate primer-sealer. Recognize that any surface preparation short of total removal of the old coating may compromise the service length of the system.

Aluminum and Galvanized Steel:
Wash to remove any oil, grease, or other surface contamination. All corrosion must be removed with sandpaper, wire brush, or other abrading method.

Cement Composition Siding/Panels:
Remove all dirt, dust, grease, oil, loose particles, laitance, foreign material, and peeling or defective coatings. Allow the surface to dry thoroughly. If the surface is new, test it for pH, if the pH is higher than 9, prime with Loxon Concrete & Masonry Primer.

Caulking:
Gaps between windows, doors, trim, and other through-wall openings can be filled with the appropriate caulk after priming the surface.

Concrete, Masonry, Cement, Block:
All new surfaces must be cured according to the supplier's recommendations—usually about 30 days. Remove all form release and curing agents. Rough surfaces should be filled to provide a smooth surface. If painting cannot wait 30 days, allow the surface to cure 7 days and prime the surface with Loxon Concrete & Masonry Primer. Cracks, voids, and other holes should be repaired with an elastomeric patch or sealant. Concrete masonry units (CMU) - Surface should be thoroughly clean and dry. Air, material and surface temperatures must be at least 50°F (10°C) before filling. Use Loxon Acrylic Block Surfacer. The filler must be thoroughly dry before topcoating.

Stucco:
Remove any loose stucco, efflorescence, or laitance. Allow new stucco to cure at least 30 days before painting. If painting cannot wait 30 days, allow the surface to dry 7 days and prime with Loxon Concrete & Masonry Primer. Repair cracks, voids, and other holes with an elastomeric patch or sealant.

SURFACE PREPARATION

Mildew:
Prior to attempting to remove mildew, it is always recommended to test any cleaner on a small, inconspicuous area prior to use. Bleach and bleaching type cleaners may damage or discolor existing paint films. Bleach alternative cleaning solutions may be advised.

Mildew may be removed before painting by washing with a solution of 1 part liquid bleach and 3 parts water. Apply the solution and scrub the mildewed area. Allow the solution to remain on the surface for 10 minutes. Rinse thoroughly with water and allow the surface to dry before painting. Wear protective eyewear, waterproof gloves, and protective clothing. Quickly wash off any of the mixture that comes in contact with your skin. Do not add detergents or ammonia to the bleach-water solution.

Previously Painted Surfaces:
If in sound condition, clean the surface of all foreign material. Smooth, hard or glossy coatings and surfaces should be dulled by abrading the surface. Apply a test area, allowing paint to dry one week before testing adhesion. If adhesion is poor, additional abrasion of the surface and/or removal of the previous coating may be necessary. Retest surface for adhesion. If paint is peeling or badly weathered, clean surface to sound substrate and treat as a new surface as above. Recognize that any surface preparation short of total removal of the old coating may compromise the service length of the system.

Steel:
Rust and mill scale must be removed using sandpaper, wire brush, or other abrading method. Bare steel must be primed the same day as cleaned.

***Vinyl or other PVC Building Products:**
Clean the surface thoroughly by scrubbing with warm, soapy water. Rinse thoroughly, if needed prime with appropriate white primer. Do not paint vinyl with any color darker than the original color or having a Light Reflective Value (LRV) of less than 56 unless VinylSafe® Colors are used. If VinylSafe colors are not used the vinyl may warp. Follow all painting guidelines of the vinyl manufacturer when painting. Only paint properly installed vinyl siding. Deviating from the manufacturer's painting guidelines may cause the warranty to be voided.

Wood, Plywood, Composition Board:
Clean the surface thoroughly then sand any exposed wood to a fresh surface. Patch all holes and imperfections with a wood filler or putty and sand smooth. All new and patched areas must be primed. Knots and some woods, such as redwood and cedar, contain a high amount of tannin, a colored wood extract. If applied to these bare woods, it may show some staining. If staining persists, spot prime severe areas with 1 coat of Exterior Oil-Based Wood Primer prior to using.

CAUTIONS

For Exterior use only
Protect from freezing
Non-photochemically reactive
Not for use on floors.
Before using, carefully read CAUTIONS on label

CRYSTALLINE SILICA, ZINC: Use only with adequate ventilation. To avoid overexposure, open windows and doors or use other means to ensure fresh air entry during application and drying. If you experience eye watering, headaches, or dizziness, increase fresh air, or wear respiratory protection (NIOSH approved) or leave the area. Adequate ventilation required when sanding or abrading the dried film. If adequate ventilation cannot be provided wear an approved particulate respirator (NIOSH approved). Follow respirator manufacturer's directions for respirator use. Avoid contact with eyes and skin. Wash hands after using. Keep container closed when not in use. Do not transfer contents to other containers for storage. **FIRST AID:** In case of eye contact, flush thoroughly with large amounts of water. Get medical attention if irritation persists. If swallowed, call Poison Control Center, hospital emergency room, or physician immediately. **DELAYED EFFECTS FROM LONG TERM OVEREXPOSURE.** Abrading or sanding of the dry film may release crystalline silica which has been shown to cause lung damage and cancer under long term exposure. **WARNING:** This product contains chemicals known to the State of California to cause cancer and birth defects or other reproductive harm. **DO NOT TAKE INTERNALLY. KEEP OUT OF THE REACH OF CHILDREN.**

HOTW 08/27/2020 K42W00051 40 34
FRC, SP

CLEANUP INFORMATION

Clean spills, splatters, hands and tools immediately after use with soap and warm water. After cleaning, flush spray equipment with compliant cleanup solvent to prevent rusting of the equipment. Follow manufacturer's safety recommendations when using solvents.

The information and recommendations set forth in this Product Data Sheet are based upon tests conducted by or on behalf of The Sherwin-Williams Company. Such information and recommendations set forth herein are subject to change and pertain to the product offered at the time of publication. Consult your Sherwin-Williams representative or visit www.paintdocs.com to obtain the most current version of the PDS and/or an SDS.

08/2020

www.sherwin-williams.com

continued on back

STORE EXTERIOR

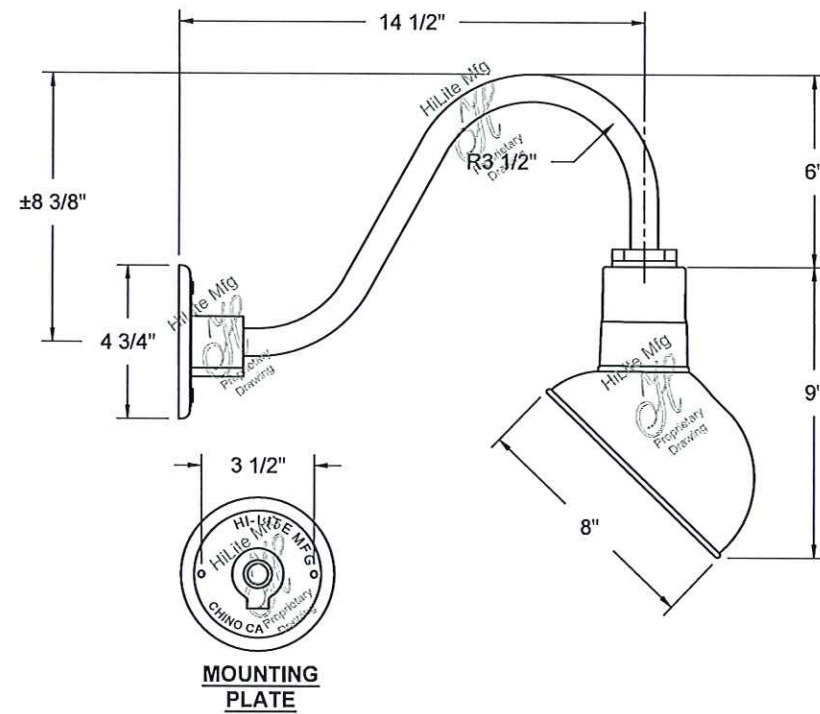
LIGHTING



HI-LITE MFG. CO., INC.

13450 Monte Vista Avenue
 Chino, California 91710
 Telephone: (909) 465-1999
 Toll Free: (800) 465-0211
 Fax: (909) 465-0907
 www.hilitemfg.com

JOB NAME:		
SCALE:	DATE:	TYPE:
N.T.S.	06/05/2017	
DRAWN BY:	QTY:	
S.M.-D	1	
SHEET:		REV:



Item Number	Wattage	Voltage
H-EM08-BK01/B-1-BK01/15W MAX LBL	15W	120V

Finish	Mounting	Lamp/Socket
BK01-Black Texture (Fixture & Arm)	Wall Mount	1-Medium Base INC

***Confidential and Proprietary. The information contained on this page is the sole property of Hi-Lite Mfg. Co., Inc. Any reproduction, redistribution, or use to profit from in part or as a whole without prior written authorization of Hi-Lite Mfg. Co., Inc. is unlawful, against trade laws and will be prosecuted to the fullest extent.

THANK YOU!

SHREMSHOCK ARCHITECTS
AUGUST 2022