

711 N. FIELDER RD.  
 ARLINGTON, TX 76012  
 PH: (817) 635-5696  
 FAX: (817) 635-5699



1644 Ford Avenue Wyandotte, MI 48192  
 734.566.3259 O. 734.566.3234 F.

RESTAURANT  
 SHELL BUILDING  
 212-226 CHARLTON RD.  
 STURBRIDGE, MA 01566

THE PROFESSIONAL SERVICES OF THE ARCHITECT ARE UNDERTAKEN FOR AND ARE PERFORMED IN THE INTEREST ALIQUID USA. NO CONTRACTUAL OBLIGATION IS ASSUMED BY THE ARCHITECT FOR THE BENEFIT OF ANY OTHER PERSON INVOLVED WITH THIS PROJECT.

REVISIONS  
 05-16-23 ISSUED FOR REVIEW

PROJECT NUMBER  
 21-120A

PRELIMINARY  
 FLOOR PLAN  
 AND ELEVATIONS

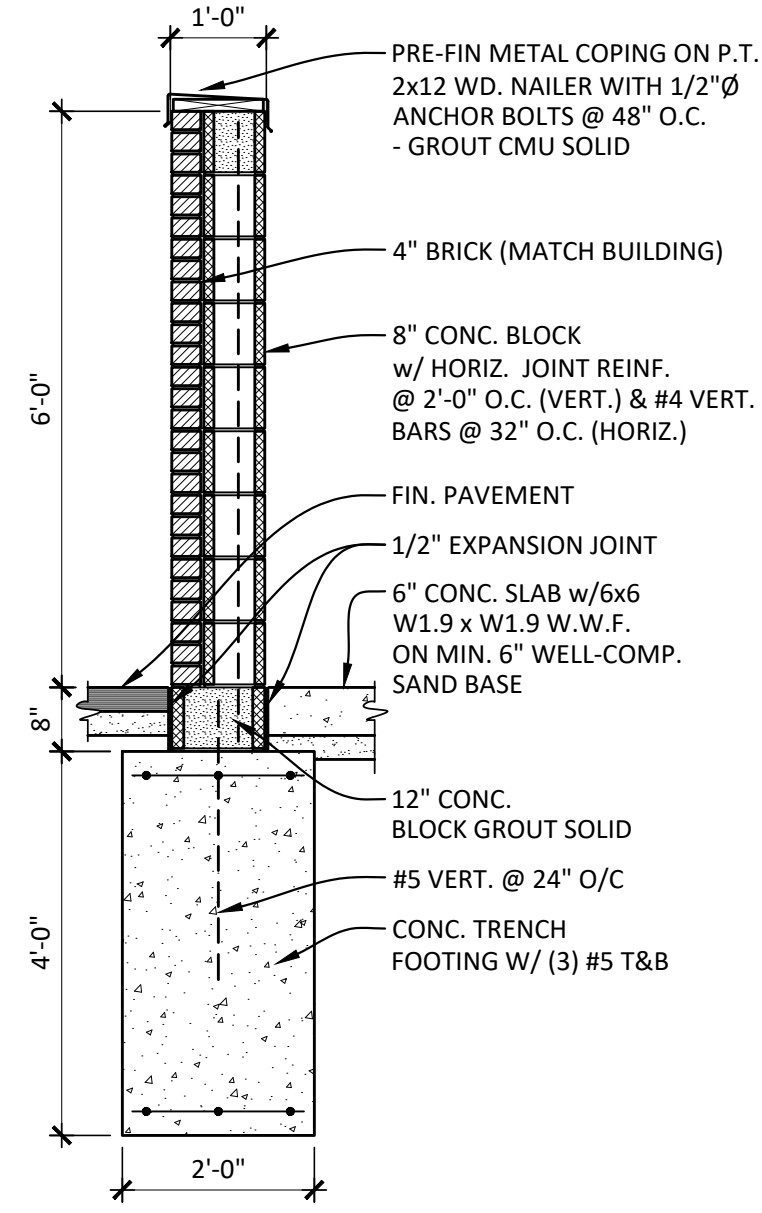
SHEET NUMBER

PP-8A

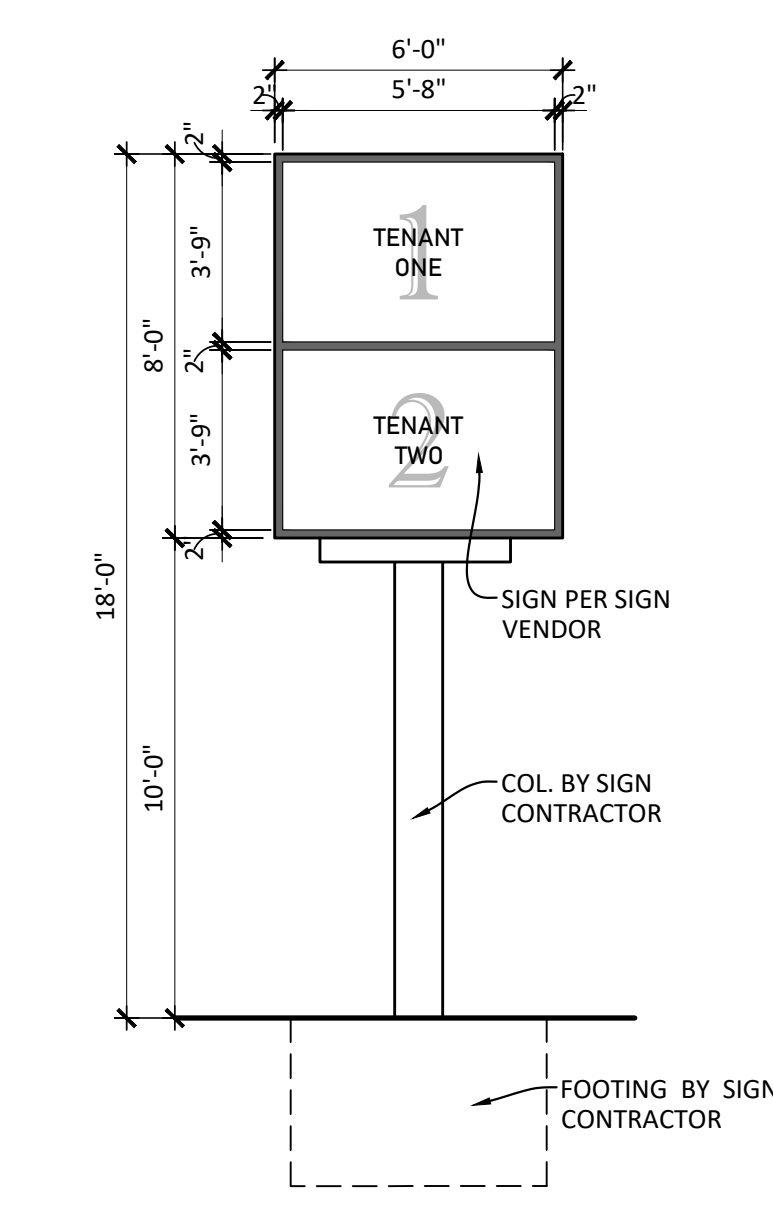
**EXTERIOR FINISH KEY**

BASED ON STARBUCKS "PALETTE - C"

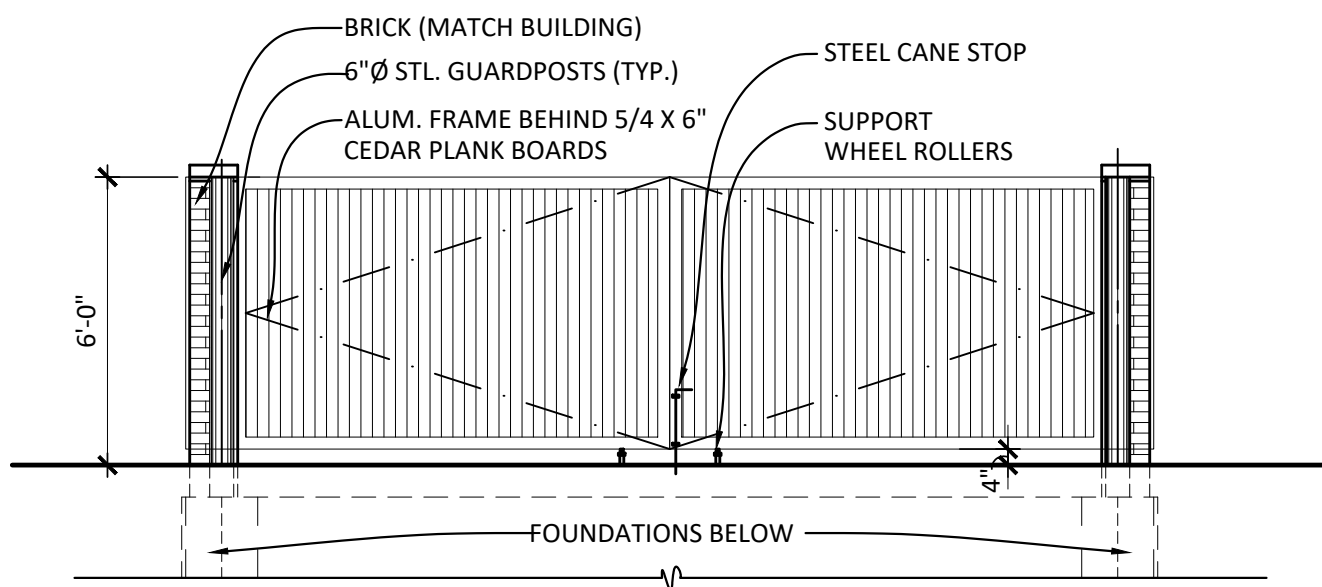
|  |  |  |
|--|--|--|
|  | <p><b>1 STOREFRONT</b><br/>                 THERMALLY BROKEN ALUM. FRAME<br/>                 W/INSULATED GLAZING<br/>                 MFR: TBD COLOR: DARK BRONZE</p> <p><b>2 MODULAR BRICK VENEER</b><br/>                 MFR: MORA CERAMICA<br/>                 COLOR: NERO - SMOOTH<br/>                 [MORTAR TO MATCH BRICK]</p> <p><b>3 EIFS</b><br/>                 MFR: DRYVIT<br/>                 COLOR: STAR - 06 1022 ST<br/>                 SANDPEBBLE FINE TEXTURE<br/>                 W/ STRATOTONE COLORANT</p> <p><b>4 FIBER CEMENT SIDING</b><br/>                 MFR: NICHHA (VERTICAL)<br/>                 STYLE: VINTAGEWOOD - WOOD SERIES<br/>                 COLOR: CEDAR</p> <p><b>5 LIGHTING</b><br/>                 SCONCE FIXTURE<br/>                 TECH LIGHTING - WINDFALL</p> | <p><b>6 ALUMINUM FRAME AWNING</b><br/>                 FABRIC ON ALUMINUM FRAME AWNING<br/>                 BY LANDLORD<br/>                 COLOR: BLACK</p> <p><b>7 METAL CANOPY</b><br/>                 COLOR: MATTE BLACK (RAL#7021)<br/>                 (LIGHTING PER TENANT PLANS &amp; SPECS)</p> <p><b>8 SIGNAGE</b><br/>                 SIGNAGE ALLOWED: VERIFY MAX. SQ. FT.<br/>                 SIGNAGE SHALL BE SUBMITTED PER TENANT.<br/>                 SIGN PACKAGE TO BE COORDINATED AND<br/>                 FINALIZED WITH TENANT AND SIGN VENDOR</p> <p><b>9 PREFINISHED METAL COPING</b><br/>                 MFR: FIRESTONE<br/>                 COLOR: MATTE BLACK</p> <p><b>10 PAINT</b><br/>                 MFR: SHERWIN WILLIAMS<br/>                 COLOR: SW7069 - IRON ORE</p> |
|--|--|--|



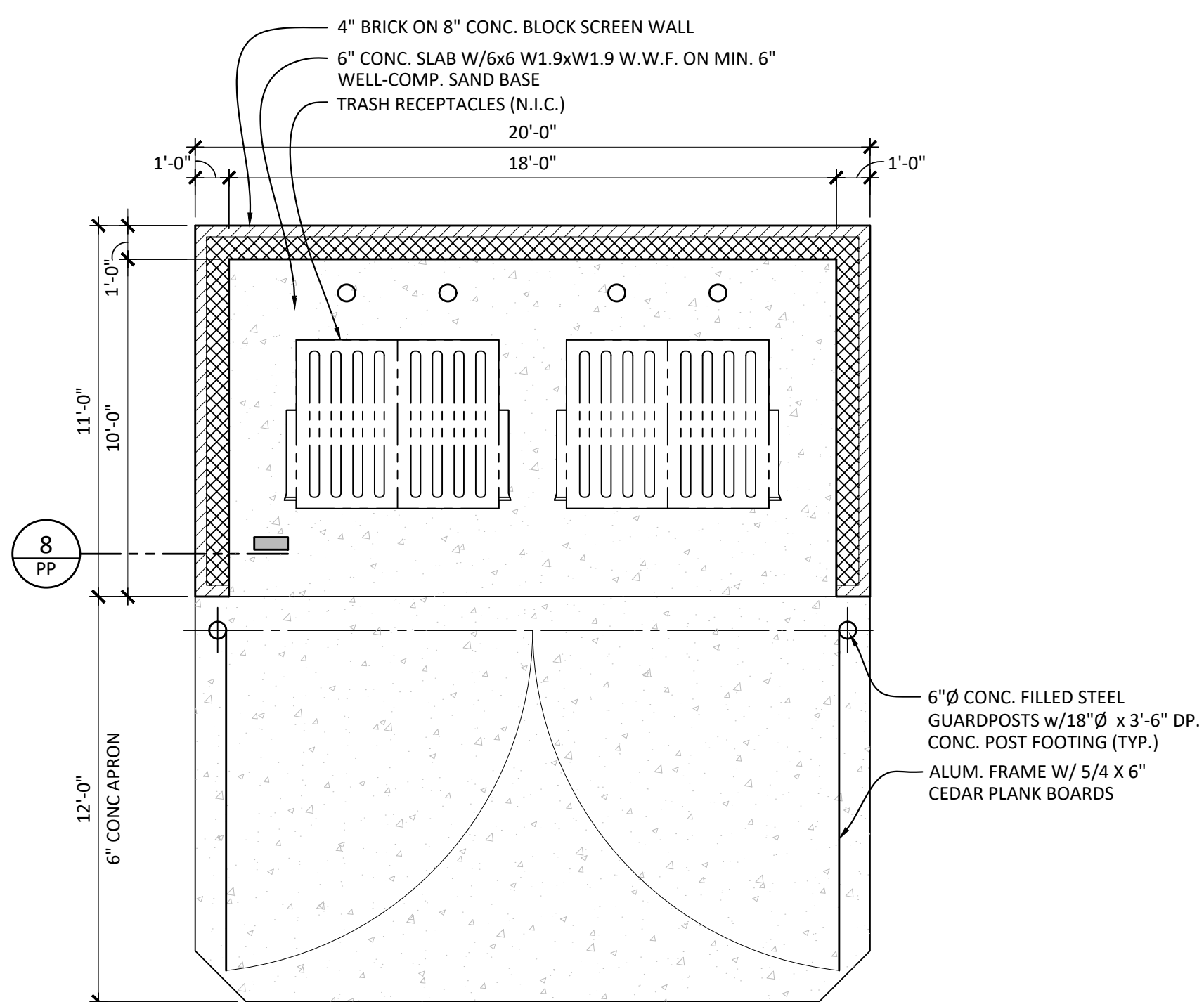
**TRASH ENCLOSURE DETAIL**  
 SCALE: 1/2" = 1'-0"



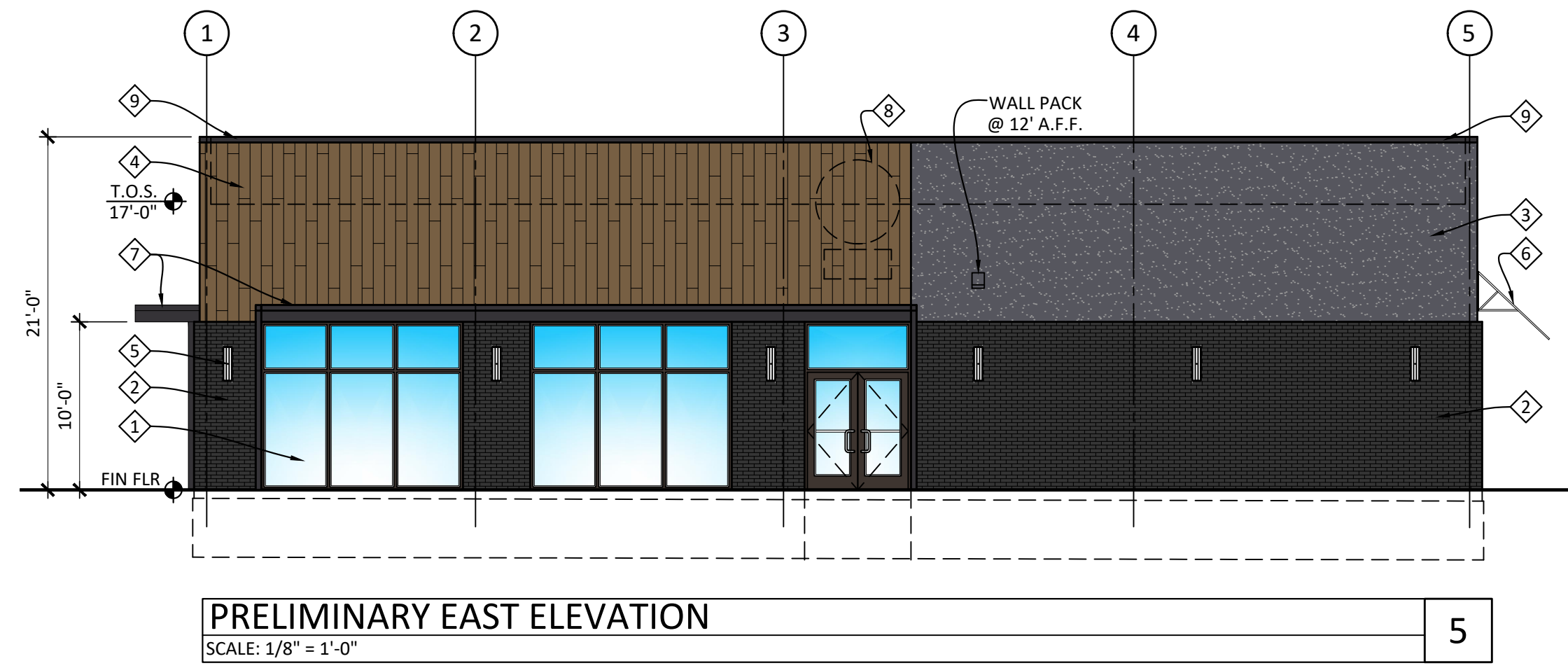
**PYLON SIGN**  
 SCALE: 1/4" = 1'-0"



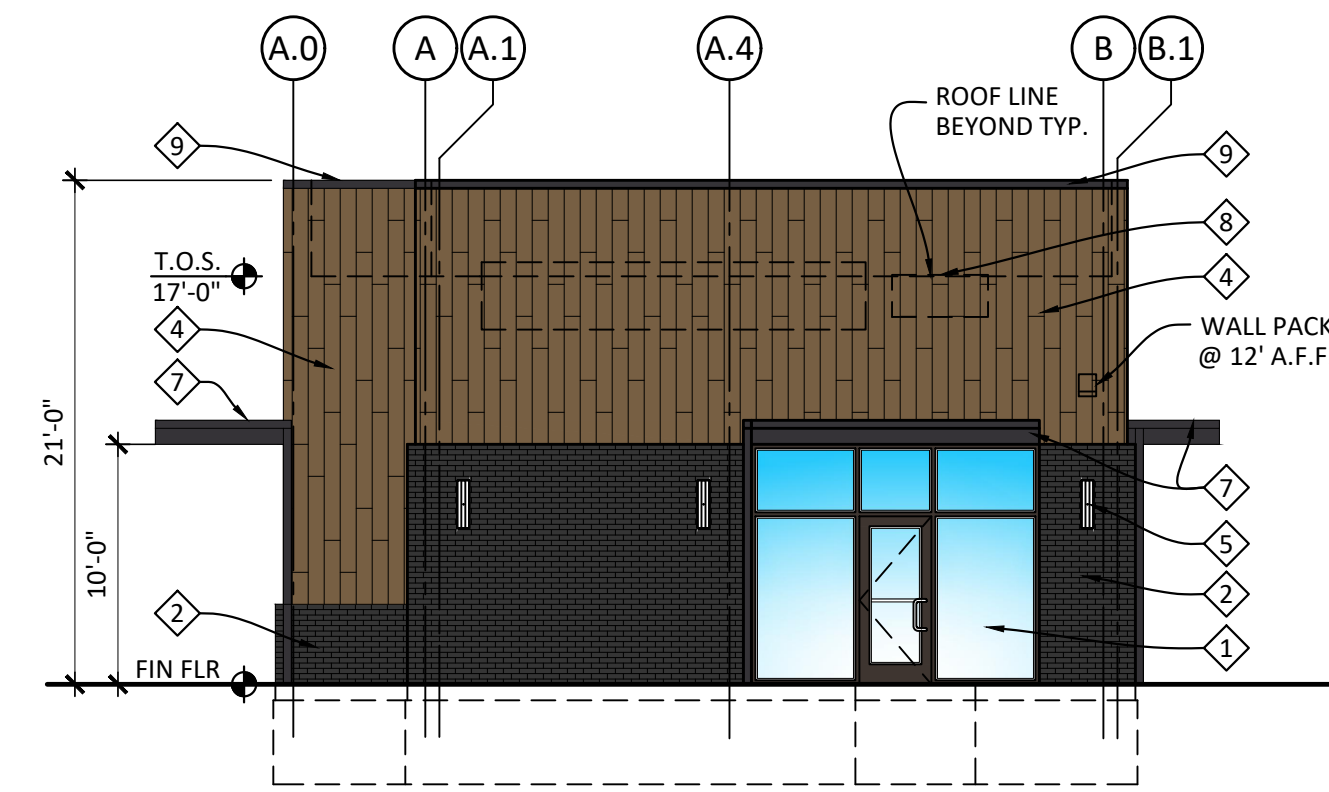
**TRASH ENCLOSURE ELEVATION**  
 SCALE: 1/4" = 1'-0"



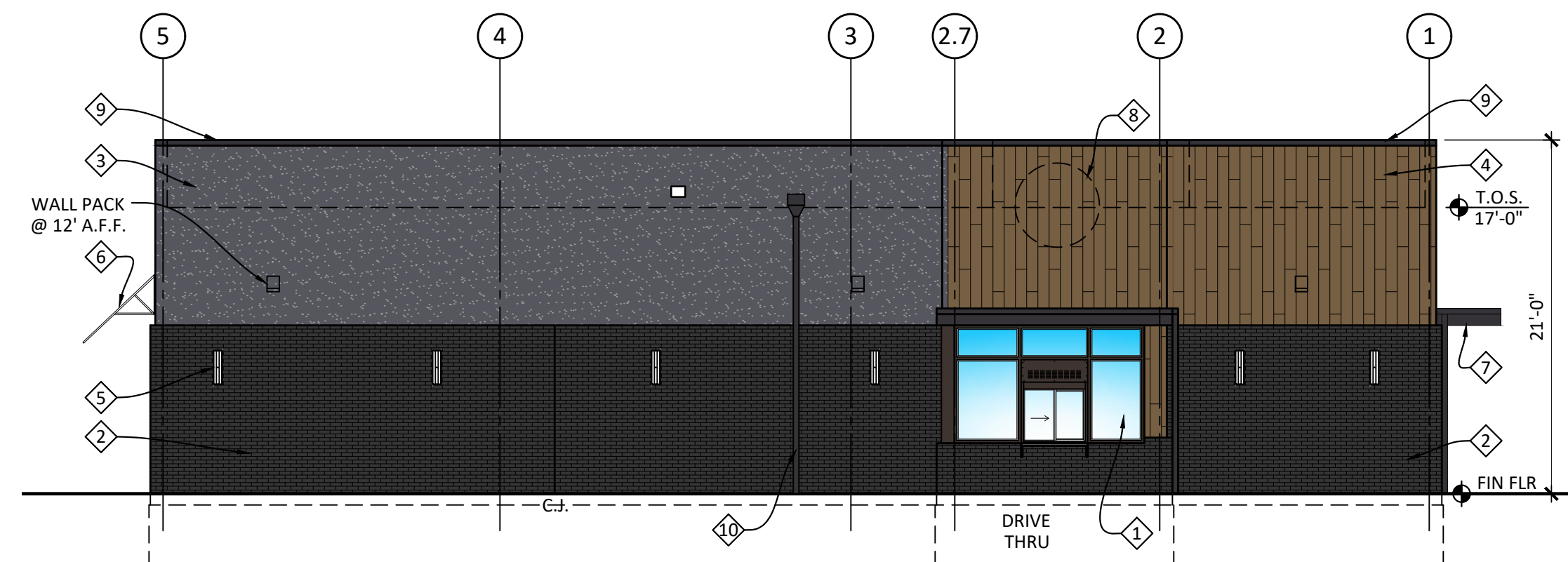
**TRASH ENCLOSURE PLAN**  
 SCALE: 1/4" = 1'-0"



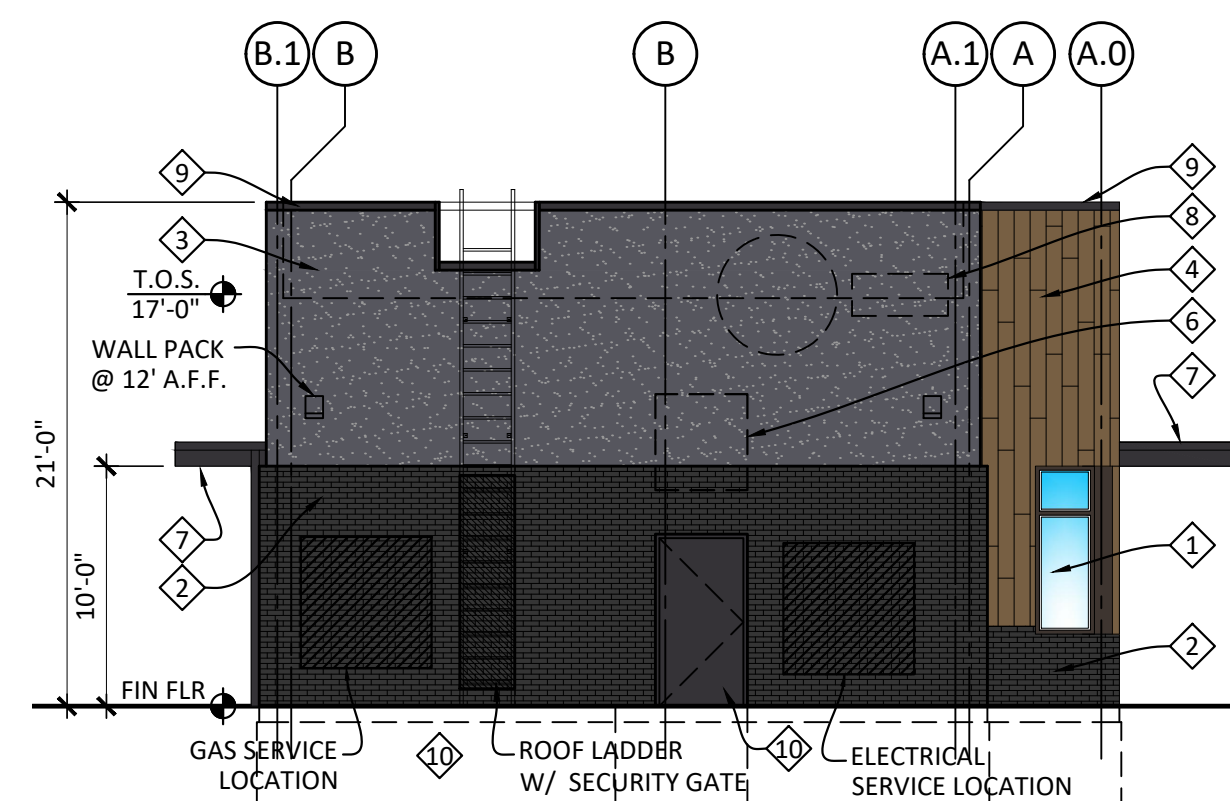
**PRELIMINARY EAST ELEVATION**  
 SCALE: 1/8" = 1'-0"



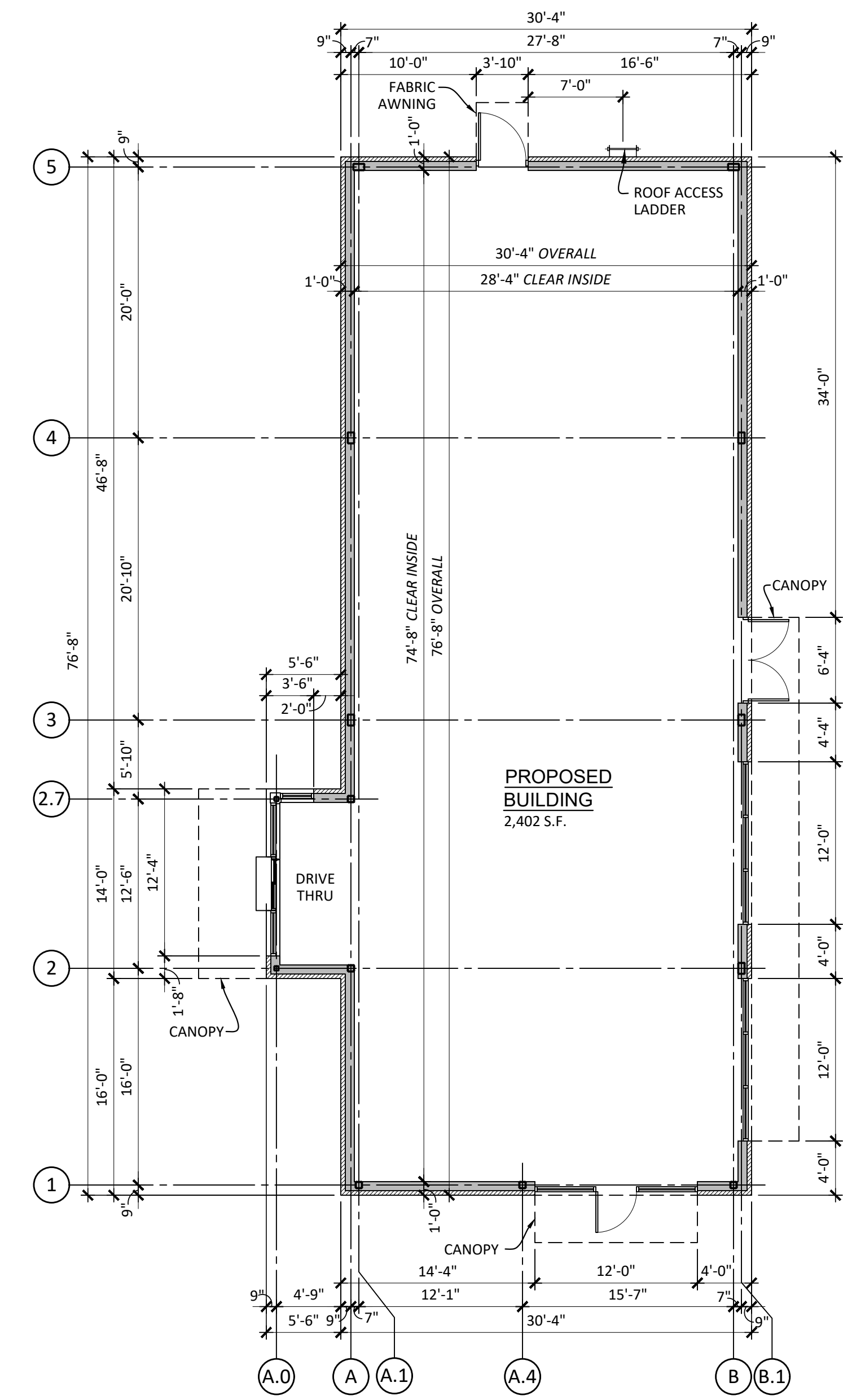
**PRELIMINARY SOUTH ELEVATION**  
 SCALE: 1/8" = 1'-0"



**PRELIMINARY WEST ELEVATION**  
 SCALE: 1/8" = 1'-0"



**PRELIMINARY NORTH ELEVATION**  
 SCALE: 1/8" = 1'-0"

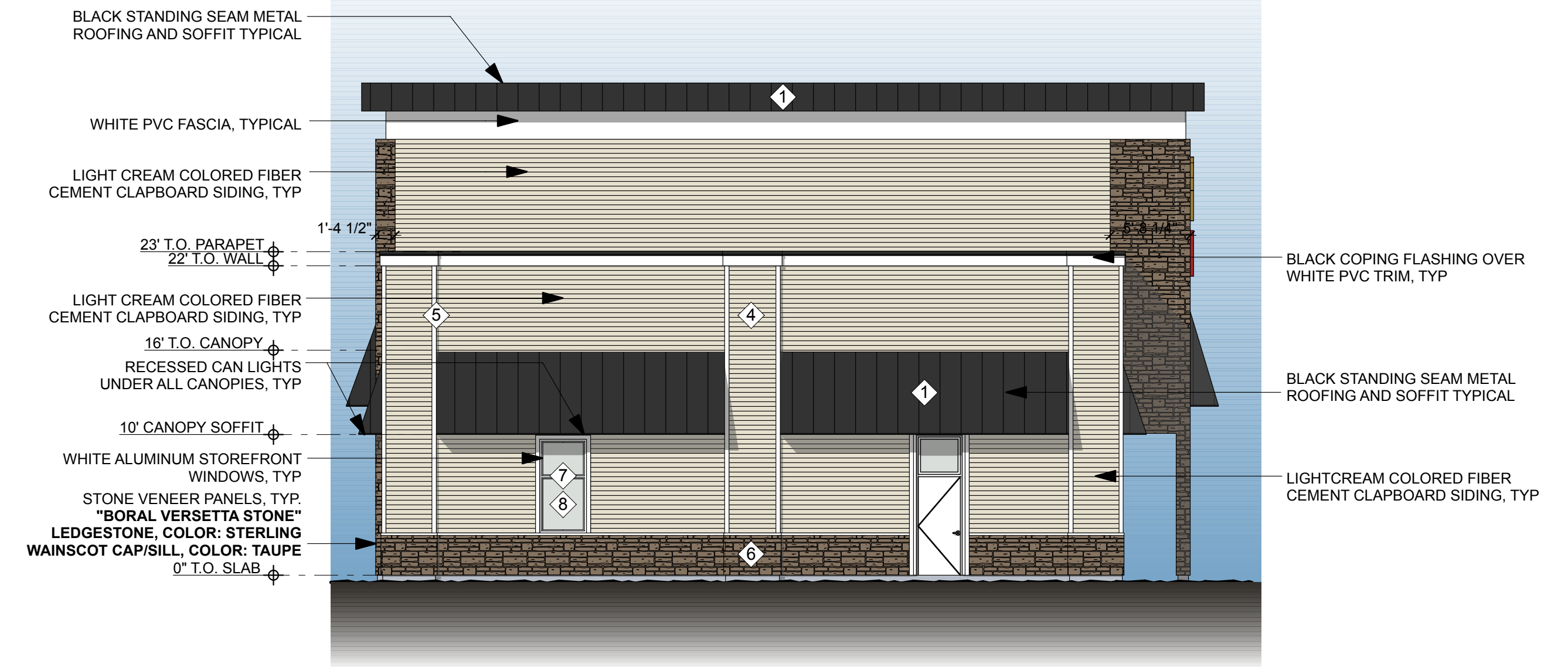


**PRELIMINARY FLOOR PLAN**  
 SCALE: 1/8" = 1'-0"





1 South Elevation (Charlton Road)  
SCALE: 1/8" = 1'-0"



2 North Elevation (Woods)  
SCALE: 1/8" = 1'-0"



3 West Elevation (Parking)  
SCALE: 1/8" = 1'-0"



4 East Elevation (Adjacent Property)  
SCALE: 1/8" = 1'-0"

**EXTERIOR FINISH KEY**

- 1 Pitched Roofs & Canopies: Standing Seam Metal Roofing, Pac-Clad "Snap Clad" or approved equal, Color: **Black**
- 2 Membrane Roof: Fully Adhered White .060 TPO Membrane on coverboard over R30 min polyiso rigid insulation,
- 3a Eave & Canopy Soffits: Pac Clad Aluminum Flush Soffit Panels or approved equal. Upper tower soffit color to match roof color. Lower canopy soffits to be white pvc beadboard, AZEK or approved equal.
- 4 Exterior Clapboard Siding: Pre-Finished James Hardie clapboard siding, 4" exposure. Color: Navajo Beige
- 5 Exterior Trim: 5/4 PVC, Azek or architect approved equal. Color white
- 6 Stone Veneer: Stone Veneer Panels "Boral Versetta Stone" Ledgestone, Color: Sterling w/ Wainscot cap/sill, Color: Taupe.
- 7 Aluminum Storefront: All Aluminum Storefront doors/windows shall be Kawneer 451T Thermally Broken aluminum storefront system or approved equal.
- 8 Two sets of glass exterior double doors with thermally broken aluminum frames with two ADA automatic door openers. Color to be white
- 9a Signage: Externally illuminated channel letter set, flush mounted to exterior painted wall. Colors and design meet CMD standards. Refer to detailed sign package for more information.
- 9b
- 9c
- 9d

Rear Exit Door: Insulated Hollow Metal rear door with ADA push exit hardware, electric strike & FOB access control system.

**Envelope Insulation:**  
 -Low slope roof to be R30 min continuous between exterior insulated walls, ensuring continuity of all envelope insulation.  
 -Exterior Walls to be R26 (4") min Closed cell spray in place polyurethane insulation in stud cavity  
 -2" min rigid insulation from top of foundation footing to top of slab elevation on outside face of foundation wall, Reinforced Stucco finish over exposed foundation insulation.

**Exterior Lighting:**  
 Provide & Install recessed LED lighting fixtures in all canopies.  
 Provide additional Linear LED wall wash down lights to graze down corner columns of tower.  
 Provide LED Wall pack lighting at rear doors (when no awning)

ARCHITECT:  
  
 KEVIN CORREIA ARCHITECTURE  
 KEVIN CORREIA ARCHITECTURE LLC  
 52 WASHBURN STREET, SUITE 30  
 MILFORD, NH 03055  
 kcorreia@kcorch.com | 603-255-3075

The material contained in these drawings and the design they are intended to convey are the exclusive property of Kevin Correia Architecture LLC. Possession and use hereof is granted only confidentially in connection with construction and/or sale of the structure depicted herein as authorized by him, and the recipient agrees to abide by these restrictions. Any use, reproduction or disclosure of any information, in whole or in part, contained herein, without written permission of Kevin Correia Architecture LLC, is expressly prohibited.

ENGINEER:

CLIENT:  
  
 convenientMD  
 Corporate Office  
 111 New Hampshire Avenue,  
 Portsmouth, NH 03801  
 603-319-4490

PROJECT:  
**convenientMD**  
 BUILDING SHELL  
 212 Charlton Road  
 Sturbridge, MA 01566

SEAL:

Elevations

ISSUE FOR: Progress  
 ISSUE DATE: 5/19/23  
 REVISIONS:

**A201**

PROJECT #: 2023-002



© 2018 STARBUCKS COFFEE COMPANY

**STARBUCKS®**  
2401 UTAH AVENUE SOUTH  
SEATTLE, WASHINGTON 98134  
(206) 318-1575

THESE DRAWINGS AND THE PROJECT MANUAL ARE CONFIDENTIAL AND SHALL REMAIN THE SOLE PROPERTY OF STARBUCKS CORPORATION, WHICH IS THE OWNER OF THE COPYRIGHT IN THIS WORK. THEY SHALL NOT BE REPRODUCED (IN WHOLE OR IN PART), SHARED WITH THIRD PARTIES OR USED IN ANY MANNER ON OTHER PROJECTS OR EXTENSIONS TO THIS PROJECT WITHOUT THE PRIOR WRITTEN CONSENT OF STARBUCKS CORPORATION. THESE DRAWINGS AND SPECIFICATIONS ARE INTENDED TO EXPRESS DESIGN INTENT FOR A PROTOTYPICAL STARBUCKS STORE (WHICH IS SUBJECT TO CHANGE AT ANYTIME) AND DO NOT REFLECT ACTUAL SITE CONDITIONS. NEITHER PARTY SHALL HAVE ANY OBLIGATION NOR LIABILITY TO THE OTHER (EXCEPT STATED ABOVE) UNTIL A WRITTEN AGREEMENT IS FULLY EXECUTED BY BOTH PARTIES.

STARBUCKS TEMPLATE VERSION: 12022.04.22



Bergmann Architectural Associates, Inc.

1500 John F Kennedy Blvd  
2 Penn Center  
Suite 624  
Philadelphia, PA 19102

office: 215.753.1524  
www.bergmannpc.com

SITE SURVEY ONLY - NOT INTENDED FOR CONSTRUCTION USE

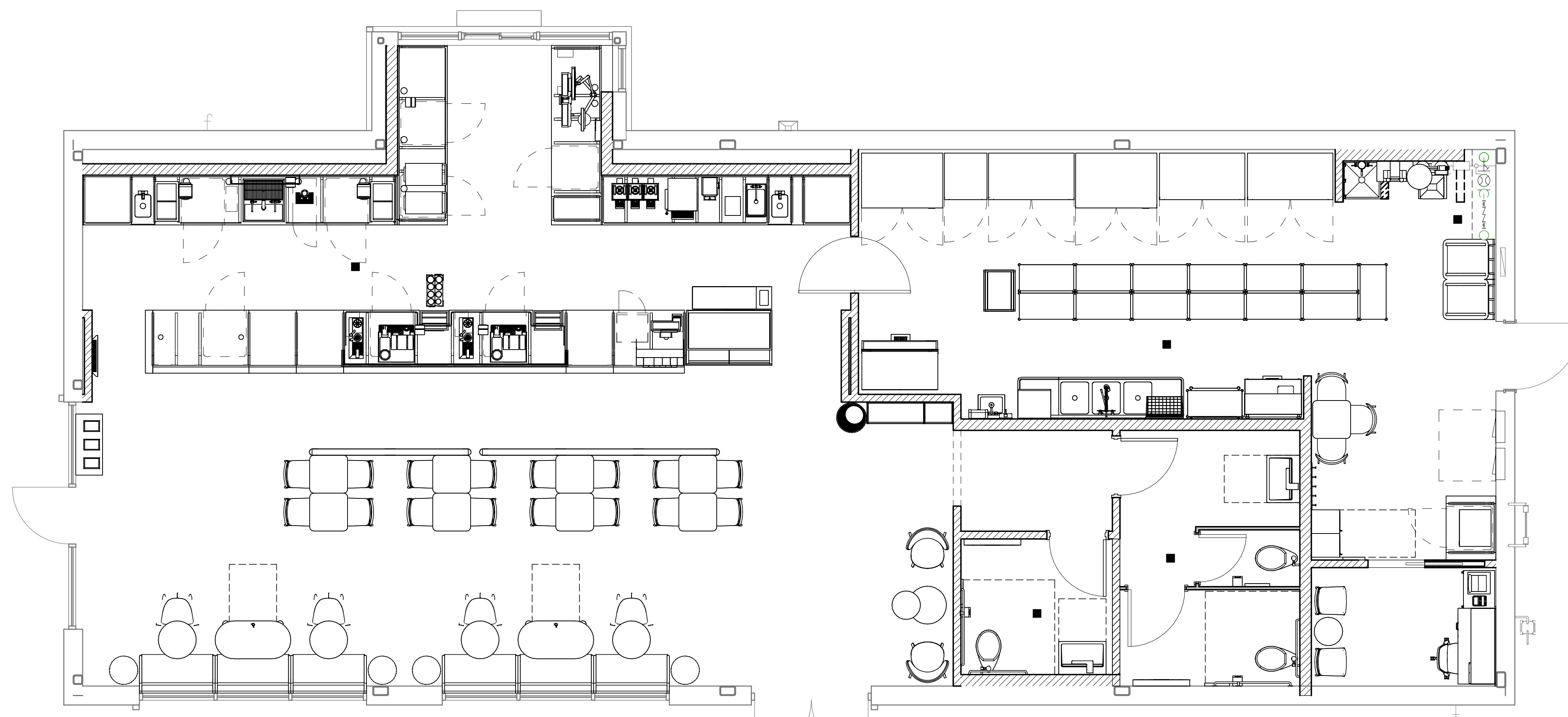
### GENERAL NOTES

- A. GENERAL CONTRACTOR TO SCHEDULE WITH LOCAL REFRIGERATION CONTRACTOR TO CONDUCT INITIAL FOOD CASE START-UP AND TESTING. FOR LIST OF APPROVED START UP CONTRACTORS, CONTACT PROJECT CONSTRUCTION REPRESENTATIVE.
- B. THE SITE IS SERVED BY THE MUNICIPAL WATER AND SEWER SYSTEM UNLESS OTHERWISE NOTED.
- C. ALL FLOOR AND WALL JUNCTIONS IN STORAGE AND PREP. AREAS SHALL HAVE A 6" COVERED BASE.
- D. ALL FOOD STORAGE SHALL BE 6" (150mm) A.F.F.
- E. ALL WOOD SURFACES (DOORS, TRIM, SHELVES, CABINETS) SHALL BE SEALED.
- F. FLOORS, WALLS AND CEILING FINISHES IN FOOD PREP. AREAS SHALL BE SMOOTH, NON-TOXIC, NON-ABSORBENT, DURABLE AND EASILY CLEANABLE. PAINT SHALL BE WASHABLE AND SEMI-GLOSS OR HIGH-GLOSS FINISH.
- G. ALL EQUIPMENT AND INSTALLATION WILL MEET NATIONAL SANITATION FOUNDATION STANDARDS OR EQUIVALENT.
- H. ALL EQUIPMENT AND CABINETS WILL BE FLUSH MOUNTED TO COUNTERS, WALLS OR FLOORS, OR BE RAISED TO ALLOW FOR CLEANING.
- I. CONFIRM ALL NECESSARY CLEARANCES PER PRODUCT CUT SHEET REQUIREMENTS FOR ALL EQUIPMENT (E.G. ICE MACHINE).
- J. FOR LOCATION OF COUNTERTOP EQUIPMENT, REFER TO CASEWORK ELECTRICAL DETAILS.
- K. EQUIPMENT UNITS SHALL CONTAIN NO EXPOSED THREADS, EMBELLISHMENTS OR OVERHANGING EDGES THAT SERVE AS PLACES FOR ACCUMULATION OF DUST, DIRT AND DEBRIS.
- L. WARMING OVEN(S) SHOWN FOR PERMITTING PURPOSES. INSTALLATION AT STORE OPENING TO BE VERIFIED BY STARBUCKS CONSTRUCTION REPRESENTATIVE.
- M. EACH HAND WASHING SINK WILL HAVE A SINGLE SERVICE TOWEL AND SOAP DISPENSER, AND ALL HAND SINKS TO HAVE A COMBINATION FAUCET OR PREMIXING FAUCET.
- N. FOR PLUMBING FIXTURES, REFER TO THE PLUMBING DESIGN PLAN. FOR DATA DEVICE SCHEDULE, REFER TO THE ELECTRICAL DESIGN PLAN.
- O. SEE ELEVATIONS FOR DISTRIBUTION OF CUP DISPENSERS.
- P. GENERAL CONTRACTOR TO COORDINATE NEWSPAPER FIXTURE ORDERING. CONTACT TRIAD MANUFACTURING BY EMAIL (starbucks@triadmf.com) OR BY PHONE (314-381-5280 X1111) TO ARRANGE SHIPMENT OF THE FIXTURE. ALLOW (5) DAY LEAD-TIME.

### KEYED NOTES

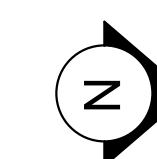
- 1. INSTALL EXTERIOR FURNITURE THROUGHOUT AS SHOWN.
- 2. INSTALL CAFE FURNITURE THROUGHOUT AS SHOWN.
- 3. COMMUNITY TABLE. SEE FURNITURE SCHEDULE.
- 4. COMMUNITY BOARD. SEE INTERIOR FINISH ELEVATIONS AND GRAPHIC SCHEDULES.
- 5. CONDIMENT CART. SEE CASEWORK PLAN AND SCHEDULES.
- 6. PLACE MERCHANDISE FIXTURES AND RETAIL FLOOR BASKETS PER PLAN. STORE OPERATORS TO ORDER RETAIL FLOOR BASKETS.
- 7. MERCHANDISE DISPLAY. SEE DETAILS X150X FOR MORE INFORMATION. ALIGN FRONT OF MERCH. BAYS WITH STOREFRONT DOOR FRAME. CENTER MERCH. BAYS WITH CENTERLINE OF WALL BEHIND.
- 8. DO NOT BLOCK FOOD CASE INTAKE/EXHAUST.
- 9. SAFE LOCATED AT POS CABINET. SEE ELECTRICAL FOR ADDITIONAL INFORMATION.
- 10. HAND SINK W/ INTEGRAL SPLASH GUARD.
- 11. INSTALL CORNER GUARD AS INDICATED. SEE INTERIOR FINISH ELEVATIONS.
- 12. REFER TO ENLARGED RESTROOM PLANS AND ELEVATIONS (SHEET 1401) FOR FIXTURE LOCATIONS AND MOUNTING HEIGHTS.
- 13. LOCATION OF SWITCH GEAR AND THERMOSTAT CONTROLS.
- 14. SECURE LOCKERS TO WALL.
- 15. VENDOR TO INSTALL WATER FILTRATION SYSTEM PER MANUFACTURER'S REQUIREMENTS. G.C. TO PROVIDE PLUMBING AND ELECTRICAL REQUIREMENTS.
- 16. WATER HEATER LOCATED ABOVE. SEE PLUMBING DRAWINGS.
- 17. MANAGERS DESK. SEE MANAGER'S DESK/EQUIPMENT RACK ELECTRICAL DETAIL FOR ADDITIONAL INFORMATION.
- 18. ELECTRICAL PANELS. SEE ELECTRICAL PLANS. MAINTAIN 3' CLEARANCE AT FRONT.
- 19. TRASH BIN.
- 20. COAT RACK MOUNTED AT 48" AFF.
- 21. PLACE FIRE EXTINGUISHER IN WORKROOM PER FIRE INSPECTOR.
- 22. G.C. TO REVERSE HINGE ON U.C. REFRIGERATOR TO LEFT HAND SWING AS SHOWN.

FOR REFERENCE ONLY



### 1 FURNITURE, FIXTURES, AND EQUIPMENT PLAN

Scale: 1/4" = 1'-0"



TBD

PROJECT NAME:  
STARBUCKS  
STURBRIDGE, MA

PROJECT ADDRESS:  
212-226 CHARLTON RD.  
STURBRIDGE, MA 01566

STORE #: 77837  
PROJECT #: 95565-001  
ISSUE DATE: 04/27/23  
DESIGN MANAGER: ANA WEINSTEIN  
PRODUCTION DESIGNER: BHS  
CHECKED BY: BHS

#### Revision Schedule

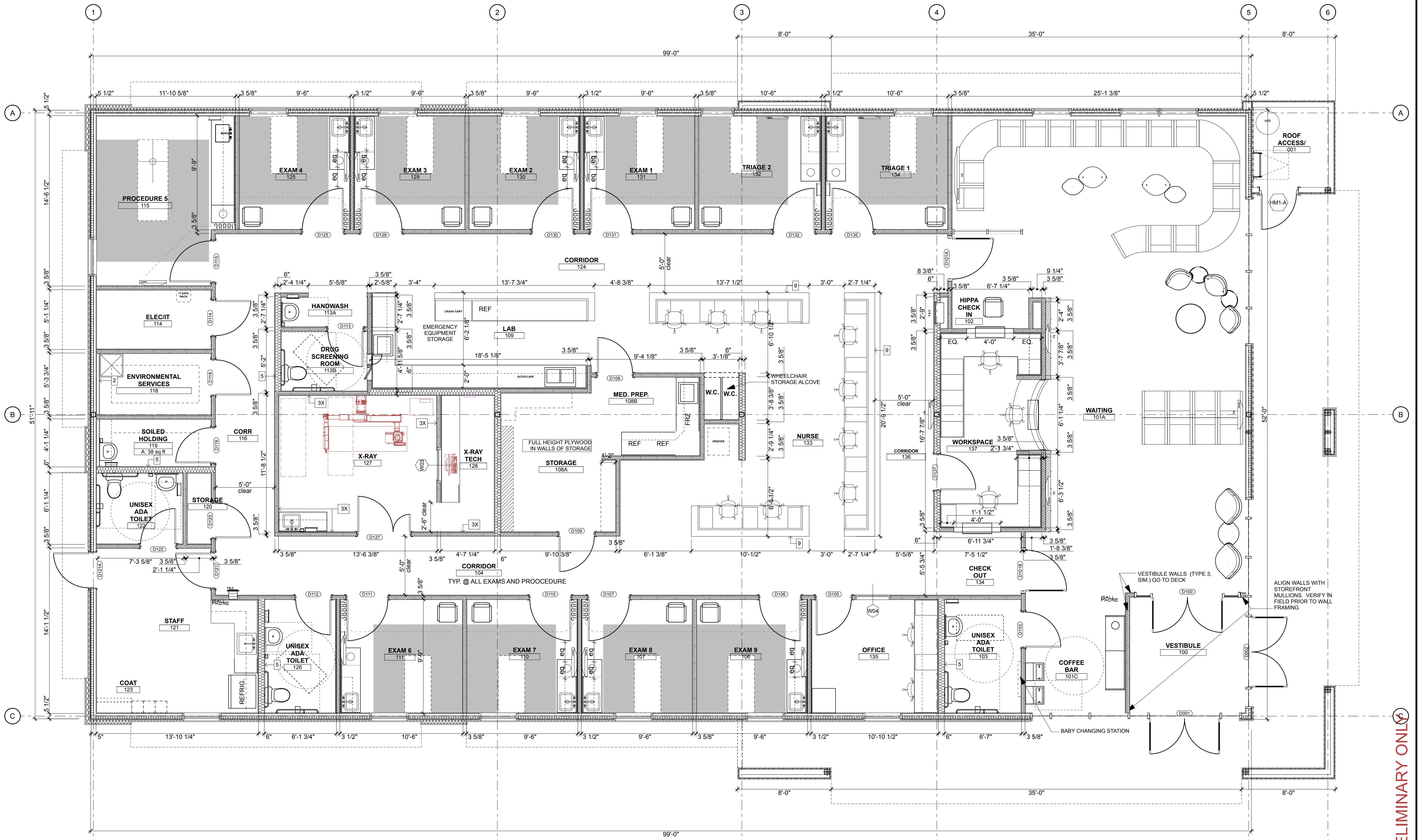
| Rev | Date | By | Description |
|-----|------|----|-------------|
|     |      |    |             |
|     |      |    |             |
|     |      |    |             |

SHEET TITLE:  
FF & E PLAN

SCALE: AS SHOWN

SHEET NUMBER:

1101



**Proposed Floor Plan**  
 SCALE: 1/8" = 1'-0"

**WALL TYPE NOTE:**  
 SEE DRAWING G002 FOR WALL TYPE NOTES

**GWB NOTE:**  
 -EXTERIOR WALLS WILL BE INSULATED AS PART OF SHELL SCOPE. FITUP SCOPE IS RESPONSIBLE TO PROVIDE & INSTALL 5/8" TYPE X GWB TO INSIDE FACE OF ALL EXTERIOR WALLS, TO BE TAPED, PRIMED AND PAINTED 2 COATS.  
 -ALL WINDOWS ARE TO HAVE GWB RETURNS AT JAMBS & HEADS CONDITIONS. WINDOW SILLS SHALL HAVE A 3/4" PAINTED POPLAR SILL TRIM WITH 3/8" PAINTED SHADOW TRIM UNDERNEATH. FRONT EDGE OF SILL TRIM SHALL ALIGN WITH THE FINISH FACE OF GWB AND SHALL DIE INTO JAMBS AT BOTH ENDS OF SILL. GWB RETURNS & WOOD SILLS TO BE INSTALLED AS PART OF FITUP SCOPE.

**PRELIMINARY ONLY**

\\dms01\correia\Seagate Backup\KCA\Active Projects\ConvenientMD Urgent Care\CHD Sturbridge\MA - 2022\Arch\2023\Convenient MD - Sturbridge\MA - Interior\_V24.rvt Wednesday, May 4, 2023