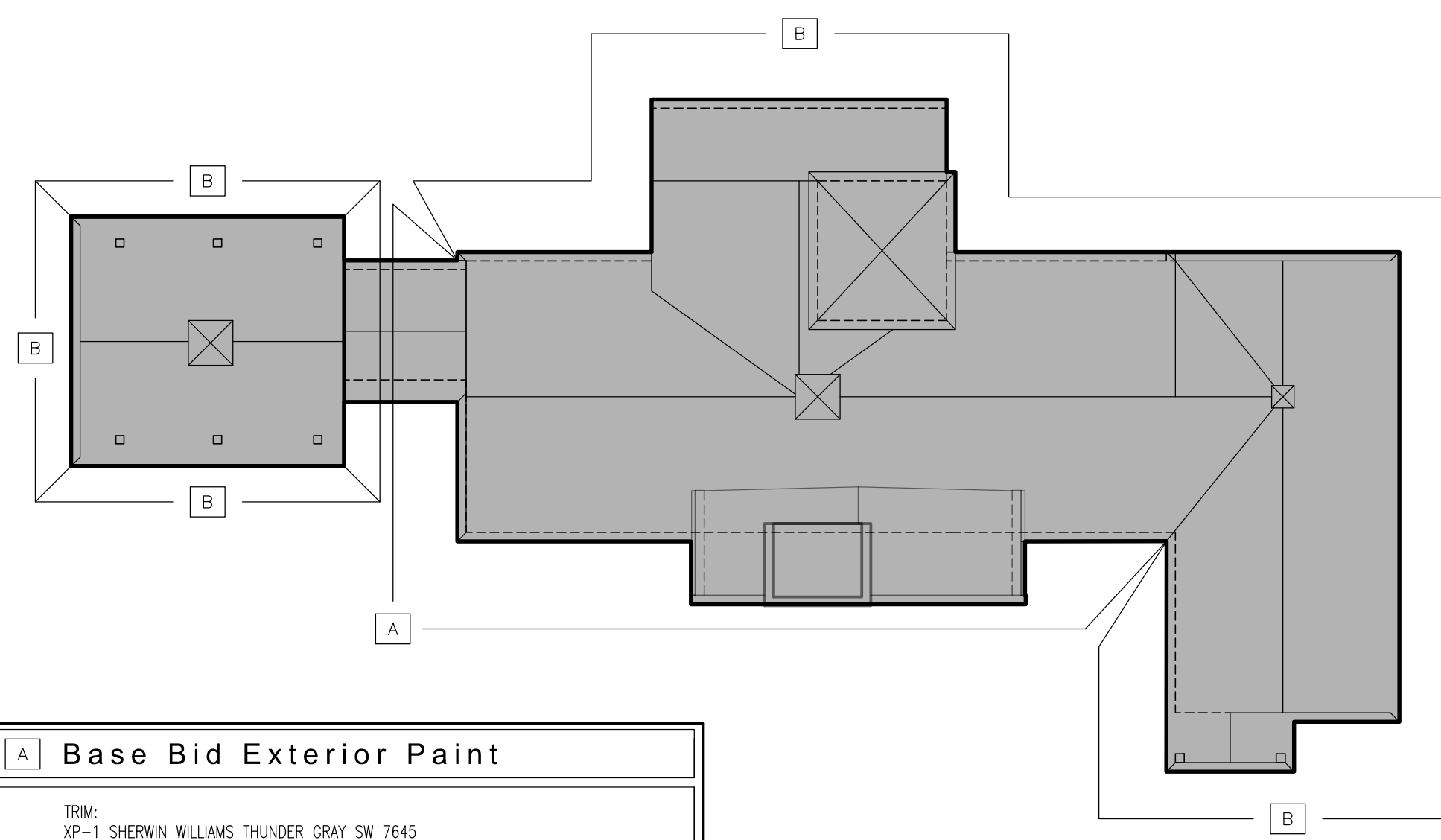
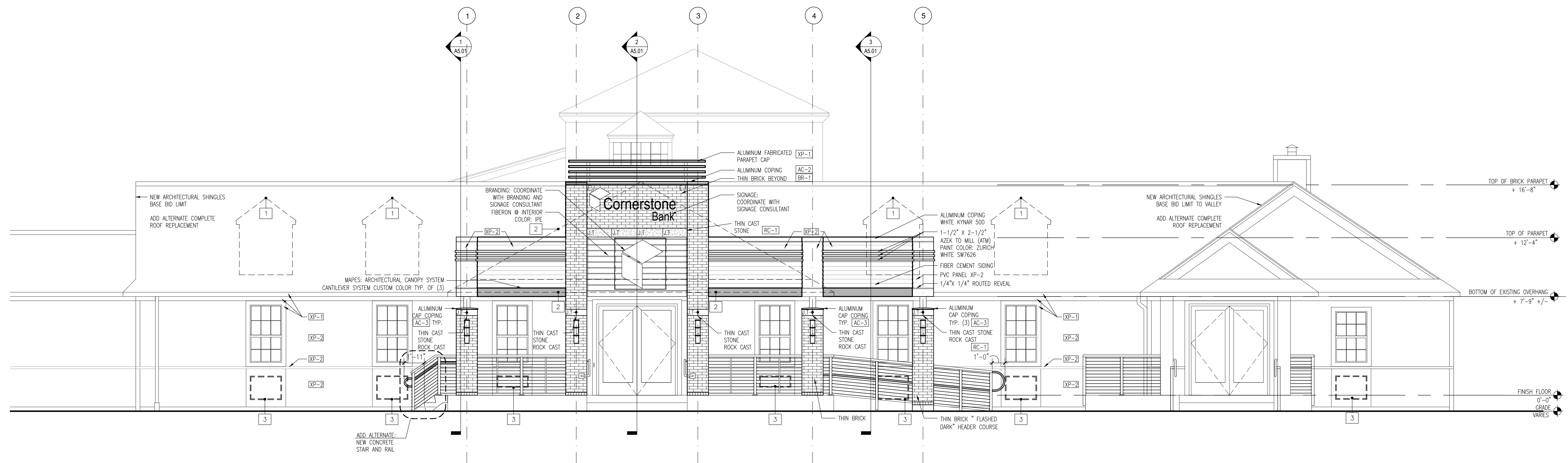


2 NORTH ELEVATION
SCALE: 1/4"=1'-0"



3 EXTERIOR PAINT SCOPE DIAGRAM
SCALE: 1/16"=1'-0"

Exterior Products	
THIN BRICK : GLEN GERY THIN BRICK -THIN TECH SYSTEM COLOR : RUSTIC BURGUNDY	BR-1
THIN CAST STONE : ROCKCAST 1 1/2" X 8" X 24" GLEN-GERY STANDARD CLIP TYPE #2 MOUNT COLOR : BUFFSTONE	RC-1
STORE FRONT : KAWNEER TRIFAB 601UT FRAMING SYSTEM 2" STOREFRONT THERMALLY IMPROVED SYSTEM COLOR : ANODIZED BRONZE	
EXTERIOR CANOPY CAN-1 : MAPES ARCHITECTURAL CANOPIES CANTILEVER COLOR: SIERRA TAN	
PVC SHEATHING, TRIM AND MOULDING: AZEK BUILDING PRODUCTS. VARIOUS SHAPES AND SIZES. PAINT COLOR : SHERWIN WILLIAMS SW7627 ZURICH WHITE	XP-2
PVC 2, TRIM AND MOULDING:(UNDER THIN CAST AT BRICK TOWER) AZEK BUILDING PRODUCTS. PAINT COLOR : SHERWIN WILLIAMS SW7051 ANALYTICAL GRAY	XP-3
ALUMINUM COPING: PAC-CLAD ALUMINUM; CONTINUOUS CLEAT COPING W/ SIDING COLOR : WHITE WITH KYNAR 500 FINISH W/ BRICK COLOR : GRAPHITE WITH KYNAR 500 FINISH @ COLUMN: COLOR: GRANITE STEEL KYNAR 500 FINISH	AC-1 AC-2 AC-3
FIBER CEMENT SIDING: JAMES HARDIE LAP SIDING COLOR: ARCTIC WHITE SIZE: 6" SIDING BOARD WITH MITERED CORNER COLOR: SHERWIN WILLIAMS ZURICH WHITE SW 7626	XP-2
FABRICATED ALUMINUM METAL WORK : COLOR MATCH SHERWIN WILLIAMS THUNDER GRAY SW: 7645	XP-1
ROOFING PRODUCTS : BASE BID: VALLEY TO VALLEY: CERTANTEED: LAND MARK PRO COLOR: RESHAWN SHAKE ADD ALTERNATE: ENTIRE ROOF CERTANTEED: LAND MARK PRO COLOR:MAX DEF PEWTERWOOD	
CLADDING PANELS :FIBRON COMPOSITE PANELS/ PLANKS/ CLADDING COLOR: IPE	
General Elevation Notes:	
1 REMOVE (4) EXISTING DORMER STRUCTURES. REPAIR EXISTING RAFTERS, PATCH AND MATCH EXISTING SHEATHING, AND PREPARE FOR NEW FINISHES	
2 REMOVE EXISTING CABLE STRUCTURE "OVER BUILD" AND ASSOCIATED COLUMN SUPPORTS. REPAIR FRAMING TO REMAIN AND REPAIR, PATCH AND MATCH NEW SHEATHING TO EXISTING AND PREPARE FOR NEW ROOFING.	
3 REMOVE EXISTING RAISED PANEL AND REPAIR EXISTING WITH PVC PANEL. REFER TO DEMO DRAWINGS FOR QUANTITIES. PAINT TO MATCH	



1 WEST ELEVATION
SCALE: 1/4"=1'-0"