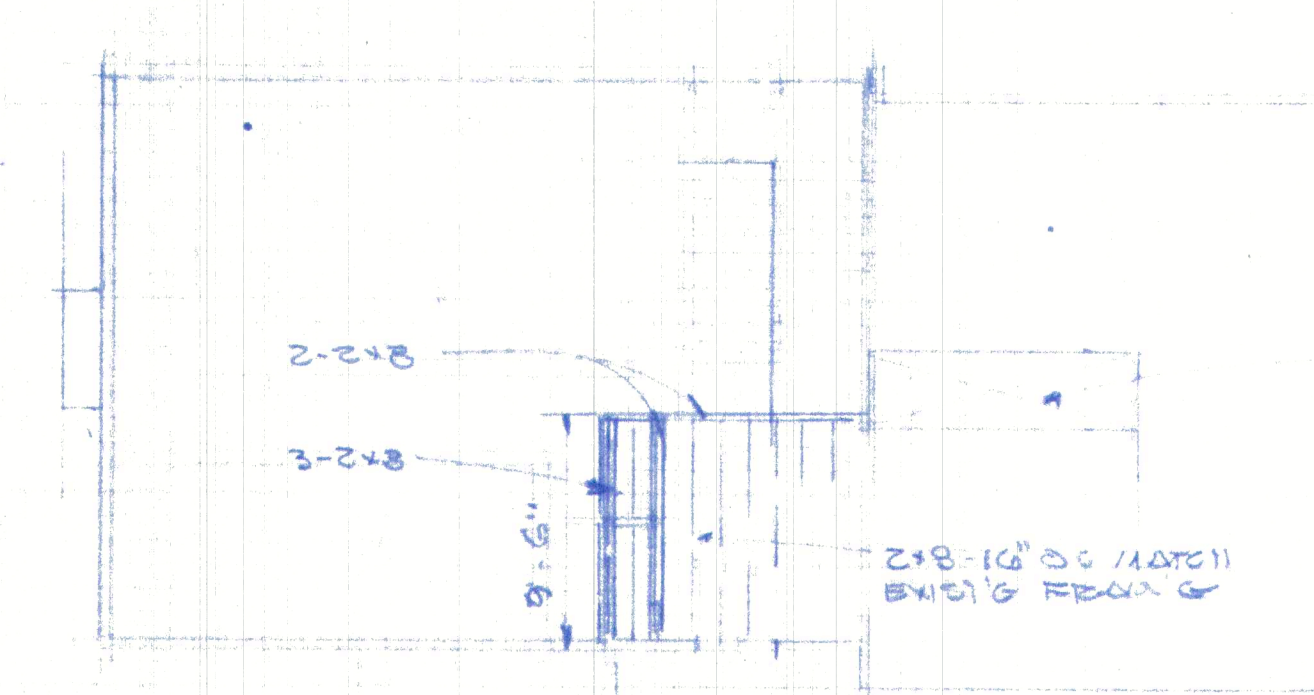
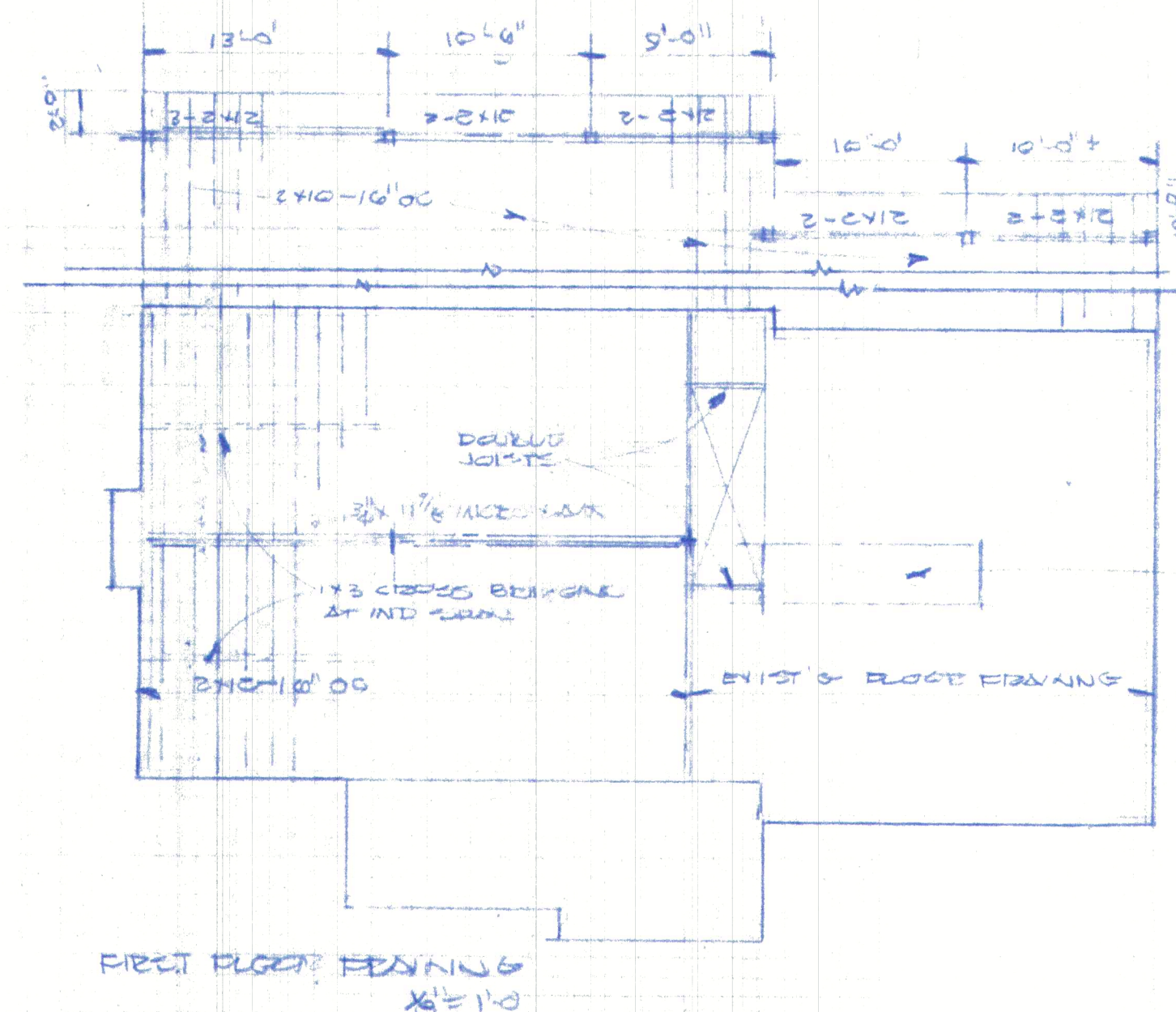
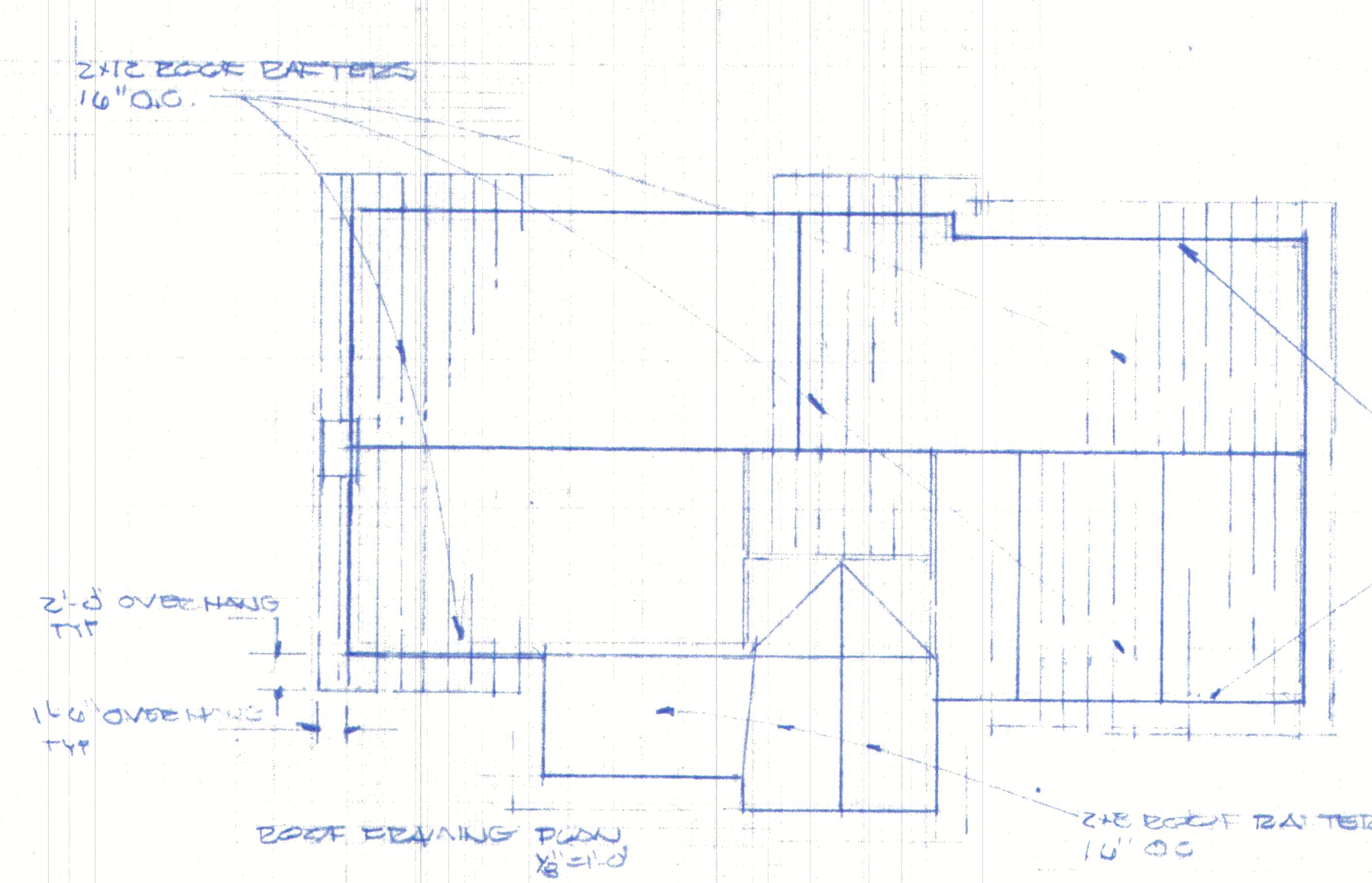
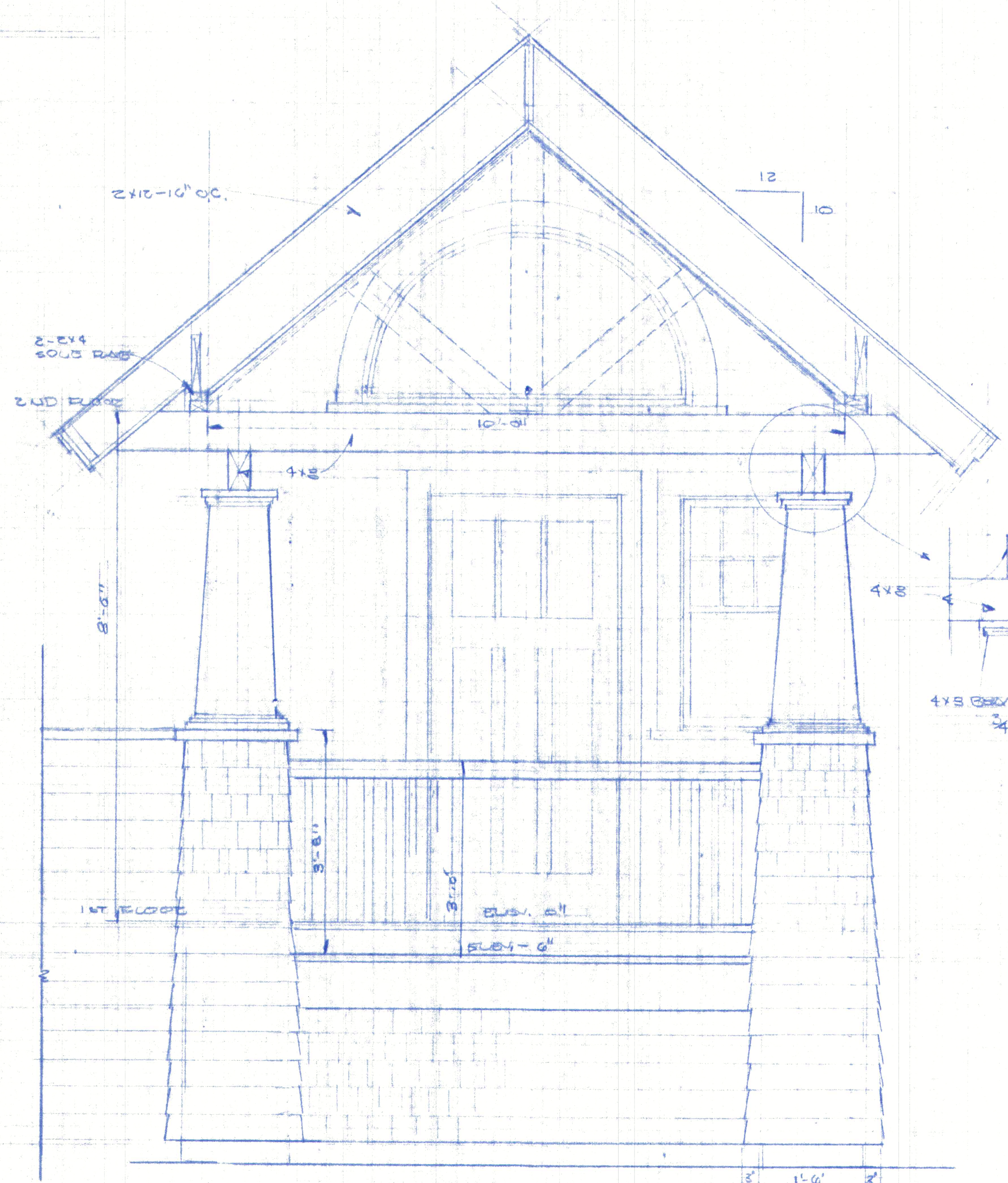
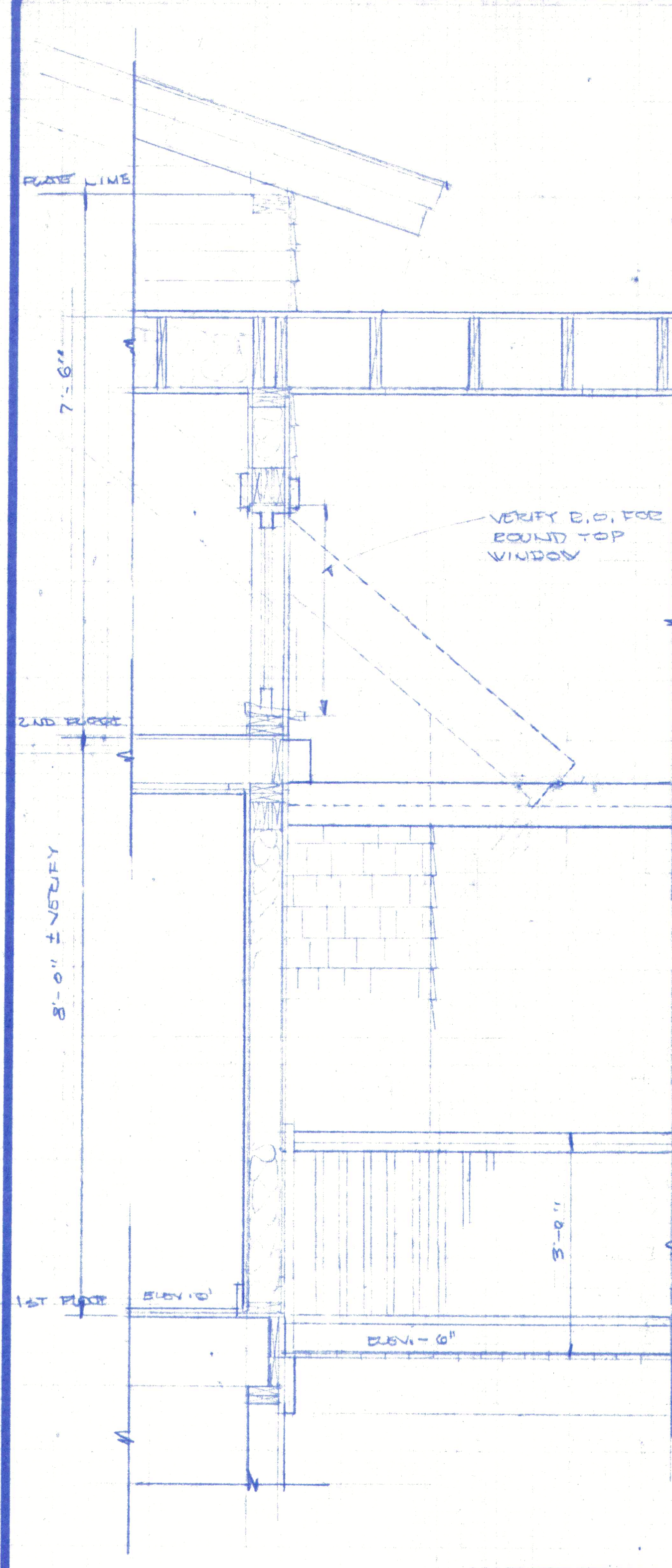


REVISIONS	BY

**Wadsworth & Associates,
Architects**
 1 Pleasant Street, Suite 400
 Worcester, Massachusetts 01609
 Telephone: 508-853-4800
 E-mail: jpw@wadsworth.com



SYM	E.O. # NUMBER	TYPE	REMARKS
1	3'-0 1/2" x 5'-0 7/8" - VDH 34410	ANDERSON D.H.-400 SERIES	CLAD, LOW E INSULATED GLASS, SCREENS
2	3'-0 1/2" x 5'-0 7/8" - VDH 210410	ANDERSON D.H.-400 SERIES	CLAD, LOW E INSULATED GLASS, SCREENS
3	2'-6 1/2" x 3'-4 7/8" - VDH 3422	" " " "	" " " " " "
4	2'-6 1/2" x 2'-9 7/8" - VTR 3427	" TRANOM 400 SERIES	CLAD, LOW E, INSULATED GLASS, SCREENS
5	1'-10 1/2" x 3'-4 7/8" WPH 1322	ANDERSON D.H.-400 SERIES	CLAD, LOW E, INSULATED GLASS, SCREENS
6	VERIFY E.O. 5128 & 5125		

RESIDENTIAL RESIDENCE
 44 CAMP ROAD
 PEKOWICK, MASSACHUSETTS
 FRAMING, SCHEDULES, CROSS SECTIONS

DRAWN
CHECKED
DATE 07-12-21
SCALE AS SHOWN
JOB NO. 21-0146
SHEET
OF SHEETS