



PILOT TRAVEL CENTER #222-06

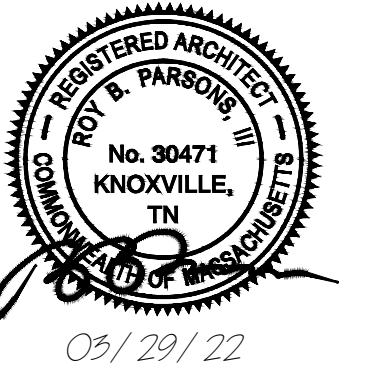
400 ROUTE 15 (HAYNES STREET)
STURBRIDGE, MASSACHUSETTS 01566

DRAWING INDEX			
COVER SHEETS			
SHT.	DRAWING NAME	REV.	DATE
CS-1	DRAWING INDEX, PROJECT INFORMATION	1	3/29/2022
ARCHITECTURAL			
SHT.	DRAWING NAME	REV.	DATE
AS-2	SITE PLAN - ISLAND DEMO	---	3/1/2022
AS-3	SITE PLAN - NEW ISLAND	1	3/29/2022
AS-5	SITE PAVING AND CONCRETE CURB SECTIONS	---	3/1/2022

PROJECT SUMMARY
<p>RECONFIGURE ISLAND AND PARKING TO PROVIDE ADDITIONAL DRIVE LANE</p> <p>PILOT COMPANY IS THE OWNER/ OPERATOR OF THE ENTIRE FACILITY.</p>

DEVELOPED BY:

PILOT FLYING J
DESIGN DEPARTMENT
5508 LONAS DRIVE
KNOXVILLE, TENNESSEE 37909
(865) 588-7487



PROJECT CONTACT

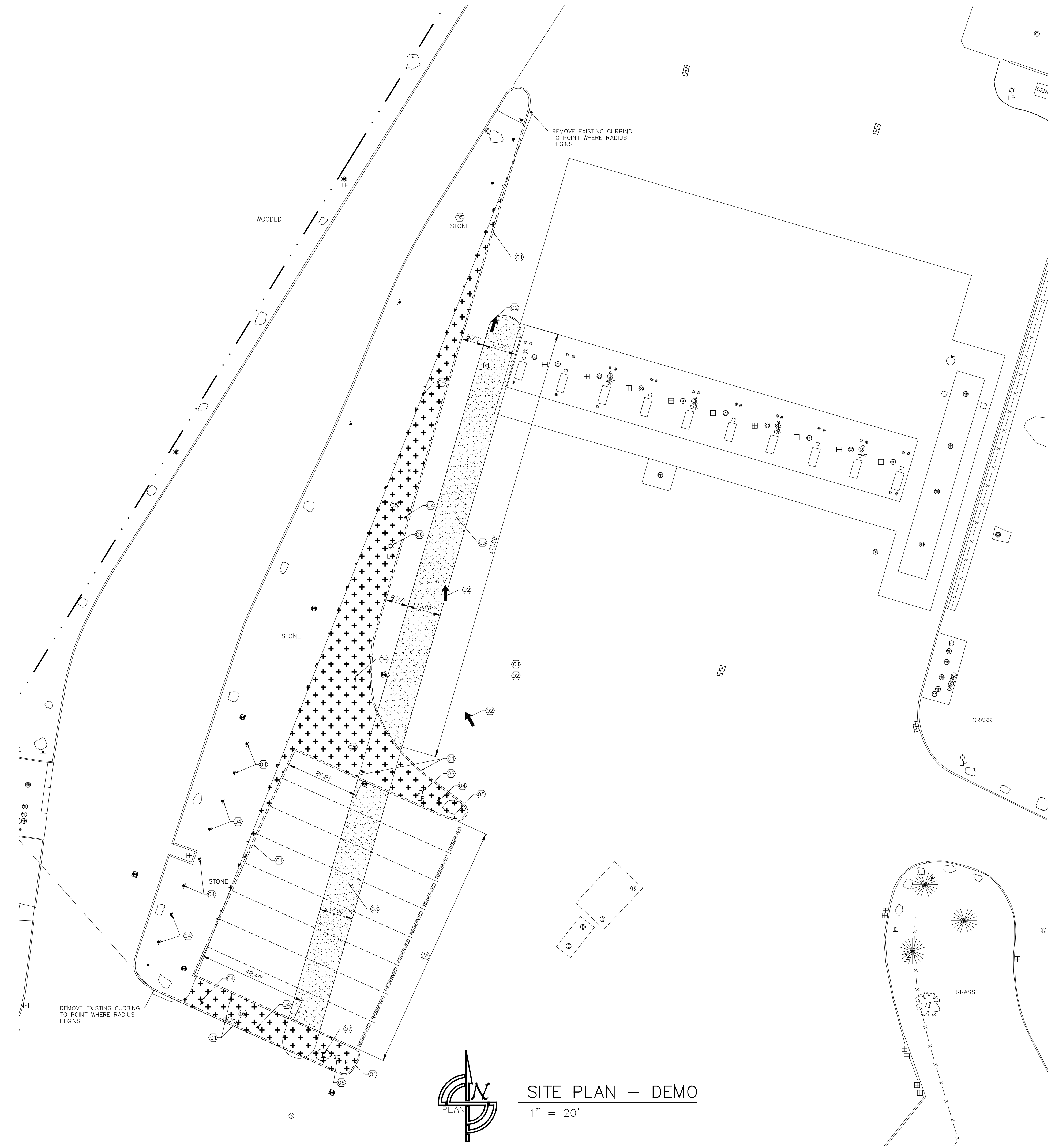
BRAD ALSUP
PROJECT MANAGER ext. 2417
MIKE RICKER
CONSTRUCTION MANAGER

ENGINEERS AND CONSULTANTS
ROY B. PARSONS III, AIA
ARCHITECT

PROJECT No. 222-06 STURBRIDGE, MASSACHUSETTS 01566

3/29/22 REVISION #1 REC

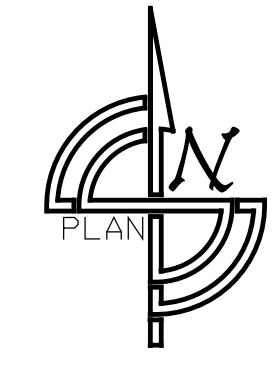
MA:\Projects\222\Sturbridge, MA\222-06 - Sturbridge, MA (2022 Parking Island Reconfiguration)\000_Reviews
 USA (2022 parking island changes)\Drawings\Civil\Plot\Pop222_06_AS2 - Island reconfiguration.dwg, 3/7/2022 2:39:42 PM, ARCH full bleed D (24.00" x 36.00 inches), 1:1



LEGEND

	DEMO CURB AND GUTTER
	DEMO ASPHALT
	PROPERTY LINE
	REMOVE STONE LANDSCAPING

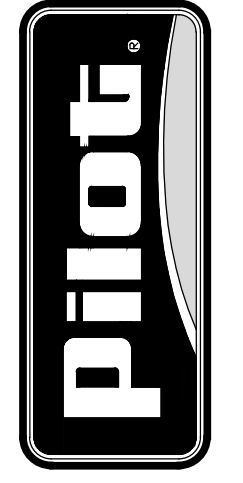
- DEMOLITION NOTES**
- 01 EXISTING CURBING TO BE REMOVED AS SHOWN.
 - 02 EXISTING PARKING SPACE STRIPING/LETTERING TO BE REMOVED.
 - 03 AREA OF EXISTING ASPHALT TO BE REMOVED TO INCORPORATE NEW ISLAND PER DRAWING AS3.0.
 - 04 EXISTING DIRECTIONAL SIGNS TO BE REMOVED.
 - 05 EXISTING LANDSCAPING TO BE REMOVED FROM NEW CONSTRUCTION AREA.
 - 06 EXISTING LIGHT POLE AND ASSOCIATED ELECTRICAL TO BE RELOCATED PER SHEET AS3.0.
 - 07 EXISTING SITE ELECTRICAL TO BE RELOCATED PER SHEET AS3.0.



SITE PLAN - DEMO
 1" = 20'



PILOT FLYING J
 DESIGN DEPARTMENT
 5508 LONAS ROAD
 KNOXVILLE, TENNESSEE 37909
 (865) 588-7488



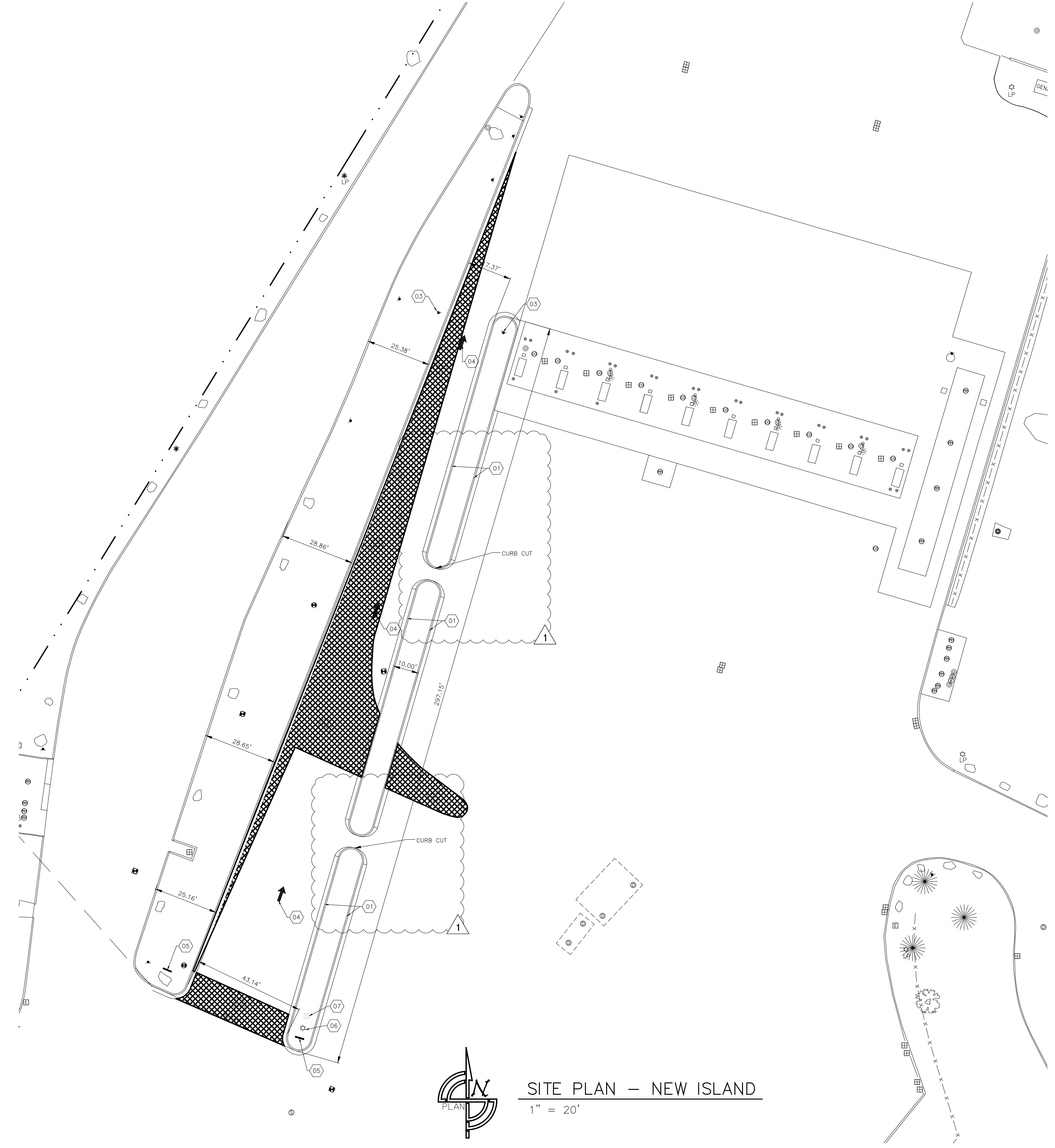
SITE PLAN - ISLAND DEMO
PILOT TRAVEL CENTER
 400 ROUTE 15 (HAYNES STREET)
 STURBRIDGE, MA 01566

DATE	REV.	DESCRIPTION	INT.
03/01/22		DRAWN BY: KEC PROJECT: 222-06	

© COPYRIGHT 2022 UNPUBLISHED
 PILOT FLYING J
 CONFIDENTIAL
 THIS DRAWING IS CONFIDENTIAL
 NO USE OR REPRODUCTION OF THIS DRAWING
 IS PERMITTED EXCEPT AS AUTHORIZED
 BY PILOT FLYING J.

SHEET:
AS-2

M:\Projects\222 Sturbridge, MA\222-06 - Sturbridge, MA (2022 Parking Island Reconfiguration)\000_04\Drawings\AS-3 - Island Reconfiguration.dwg, 3/29/2022 11:00:08 PM, ARCH full bleed D (24.00 x 36.00 inches), 1:1



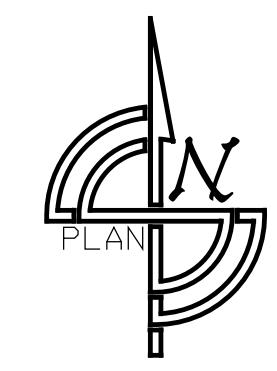
LEGEND	
	STANDARD CURB AND GUTTER
	HEAVY DUTY TRUCK AREA ASPHALT
	PROPERTY LINE

PLAN CONSTRUCTION NOTES

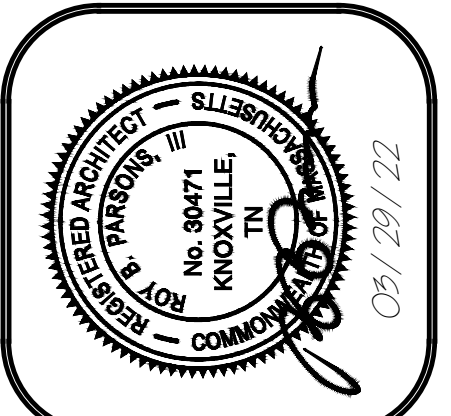
- 01 STANDARD DUTY CURB AND GUTTER. SEE SECTIONS AND DETAILS FOR SPECIFICATIONS. INSTALLED BY CONTRACTOR. SEE DETAIL 05/ASS.1.
- 02 NEW HEAVY DUTY TRUCK PAVEMENT. SEE SECTIONS AND DETAILS FOR SPECIFICATIONS. INSTALLED BY CONTRACTOR. SEE DETAIL 01/ASS.1.
- 03 NEW 'DO NOT ENTER' POLE MOUNTED SIGN. DETAILS FOR SPECIFICATIONS. INSTALLED BY CONTRACTOR. SEE DETAIL 03/ASS.1.
- 04 NEW DIRECTIONAL PAVEMENT ARROW. INSTALLED BY CONTRACTOR.
- 05 NEW DIRECTIONAL SIGNAGE. SEE DETAILS FOR SPECIFICATIONS. INSTALLED BY CONTRACTOR. SEE DETAIL 05/ASS.1.
- 06 RELOCATED SITE LIGHTING POLE. INSTALLED BY CONTRACTOR.
- 07 RELOCATED SITE ELECTRICAL BOX. INSTALLED BY CONTRACTOR.

GENERAL PAVING NOTES

- 1. ALL NEW PAVING SHALL TIE INTO EXISTING PAVEMENT AS REQUIRED TO PROVIDE LEVEL TRANSITION BETWEEN NEW AND OLD.
- 2. ALL MANHOLES MUST BE SET 2" HIGHER THAN PAVING TO PROVIDE A CROWN IN A 24" AREA AROUND EACH MANHOLE.
- 3. SUB-BASE MUST BE COMPACTED TO 95% STANDARD PROCTOR WITH A WATER CONTENT WITHIN 1.5% OF OPTIMUM.
- 4. STONE BASE MUST BE COMPACTED TO 95% STANDARD PROCTOR WITH A WATER CONTENT WITHIN 1.5% OF OPTIMUM.
- 5. PRIOR TO INSTALLING BITUMINOUS PAVING CONTRACTOR IS TO PROOF-ROLL SUB-BASE USING HEAVY PNEUMATIC-TIRED ROLLERS TO LOCATE AREAS THAT ARE UNSTABLE OR THAT REQUIRE FURTHER COMPACTION. NOTIFY CONSTRUCTION MANAGER IN WRITING OF ANY UNSATISFACTORY CONDITIONS. DO NOT BEGIN PAVING INSTALLATION UNTIL THESE CONDITIONS HAVE BEEN SATISFACTORILY CORRECTED.
- 6. ASPHALT PAVING @ EDGE OF CONCRETE PAD FOR THE TRUCK CANOPY SHOULD BE LAID @ 1/4" HIGHER THAN CONCRETE PAD ON EXIT SIDE CANOPY.
- 7. CONCRETE COLLAR IS REQUIRED FOR ALL STRUCTURES IN PAVEMENT - SEE DETAIL SHEET CS.1.



SITE PLAN - NEW ISLAND
1" = 20'

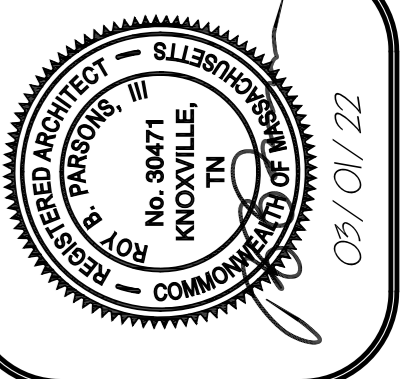


PILOT FLYING J
DESIGN DEPARTMENT
5508 LONAS ROAD
KNOXVILLE, TENNESSEE 37909
(865) 588-7488

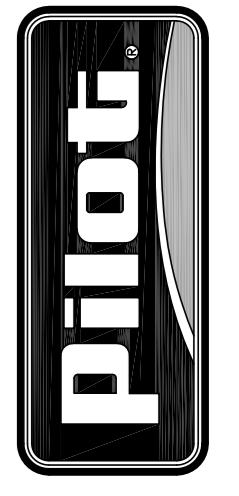
SITE PLAN - NEW ISLAND
PILOT TRAVEL CENTER
400 ROUTE 15 (HAYNES STREET)
STURBRIDGE, MA 01566

DATE	REV.	REVISION DESCRIPTION	INT.	REC.
3/29/22	1			

AS-3



PILOT FLYING J
 DESIGN DEPARTMENT
 5508 LONAS ROAD
 KNOXVILLE, TENNESSEE 37909
 (865) 588-7488



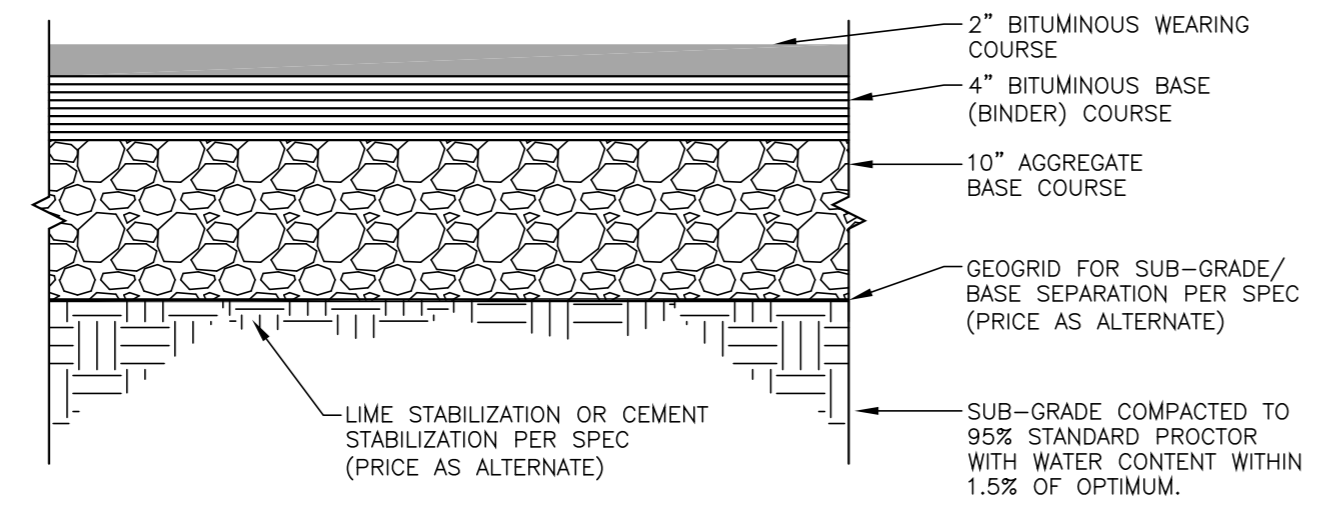
SITE PAVING AND
 CONCRETE CURB SECTIONS
 PILOT TRAVEL CENTER
 400 ROUTE 15 (HAYNES STREET)
 STURBRIDGE, MA 01566

DATE: 03/01/22	DRAWN BY: KEC	PROJECT: 222-06
DATE:	REV:	REVISION DESCRIPTION:

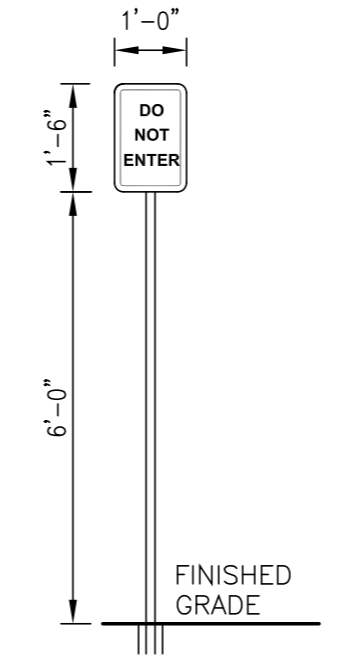
© COPYRIGHT, 2022 (UNPUBLISHED)
 PILOT FLYING J
 CONFIDENTIAL
 THIS DRAWING IS CONFIDENTIAL.
 NO USE OR REPRODUCTION OF THIS DRAWING
 IS PERMITTED WITHOUT THE WRITTEN AUTHORIZATION
 AUTHORIZED BY PILOT FLYING J

SHEET:
AS-5

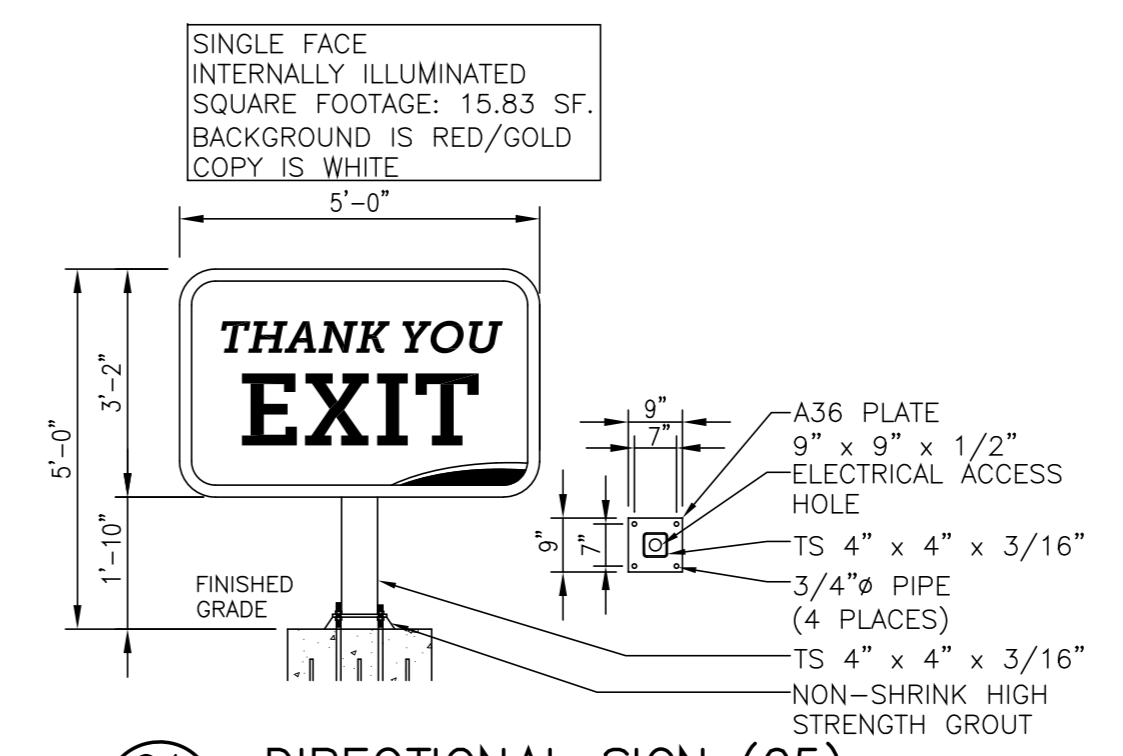
CONTRACTOR NOTE FOR DETAILS 01/C5.1 AND 02 C5.1: CONTRACTOR SHALL PROVIDE A PRICE FOR EACH GEOGRID AND STABILIZATION ALTERNATE AS OUTLINED IN THE SPECIFICATIONS MANUAL, BUT CONTRACTOR SHALL NOT INCLUDE ANY OF THE ALTERNATES IN THE BASE BID. OWNER'S REPRESENTATIVE SHALL CHOOSE AN ALTERNATE.



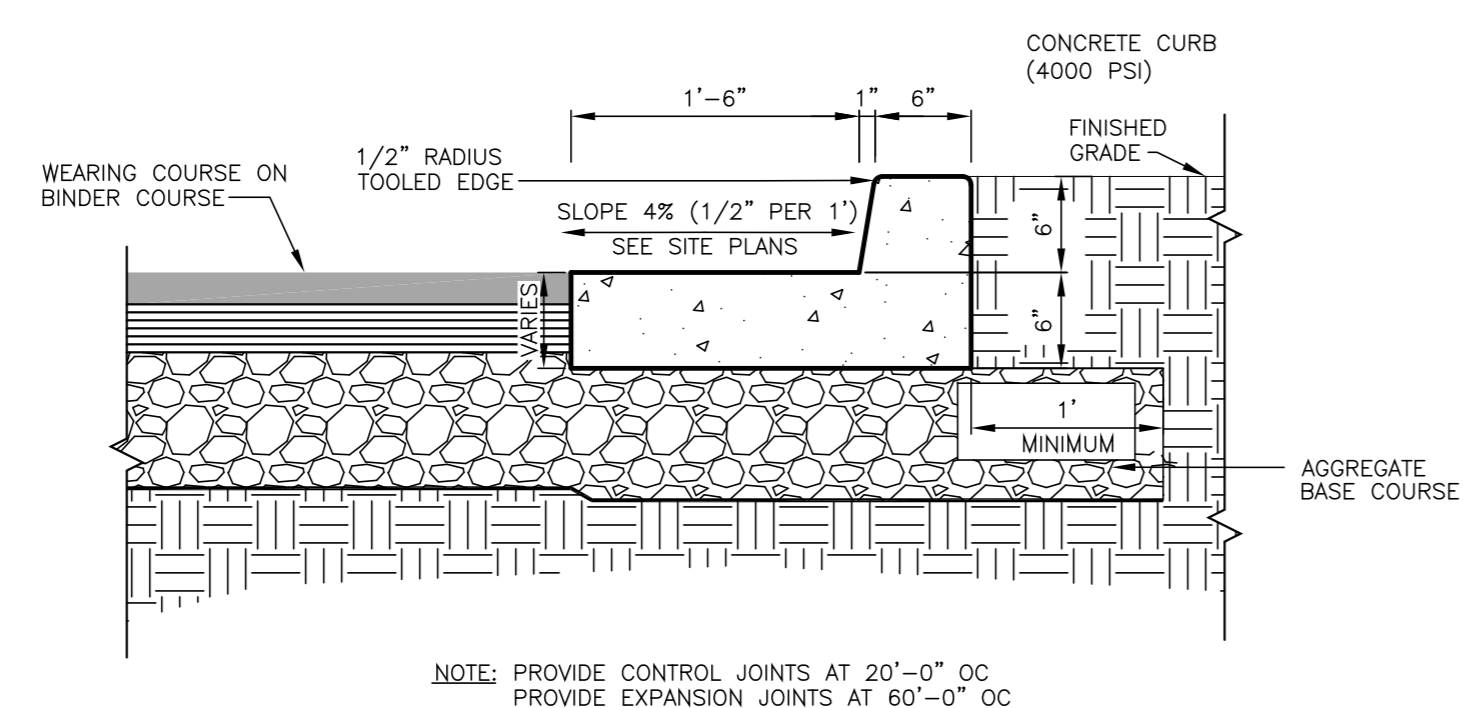
01 HEAVY DUTY TRUCK PAVEMENT SECTION
 C5.1 1"=1'-0"



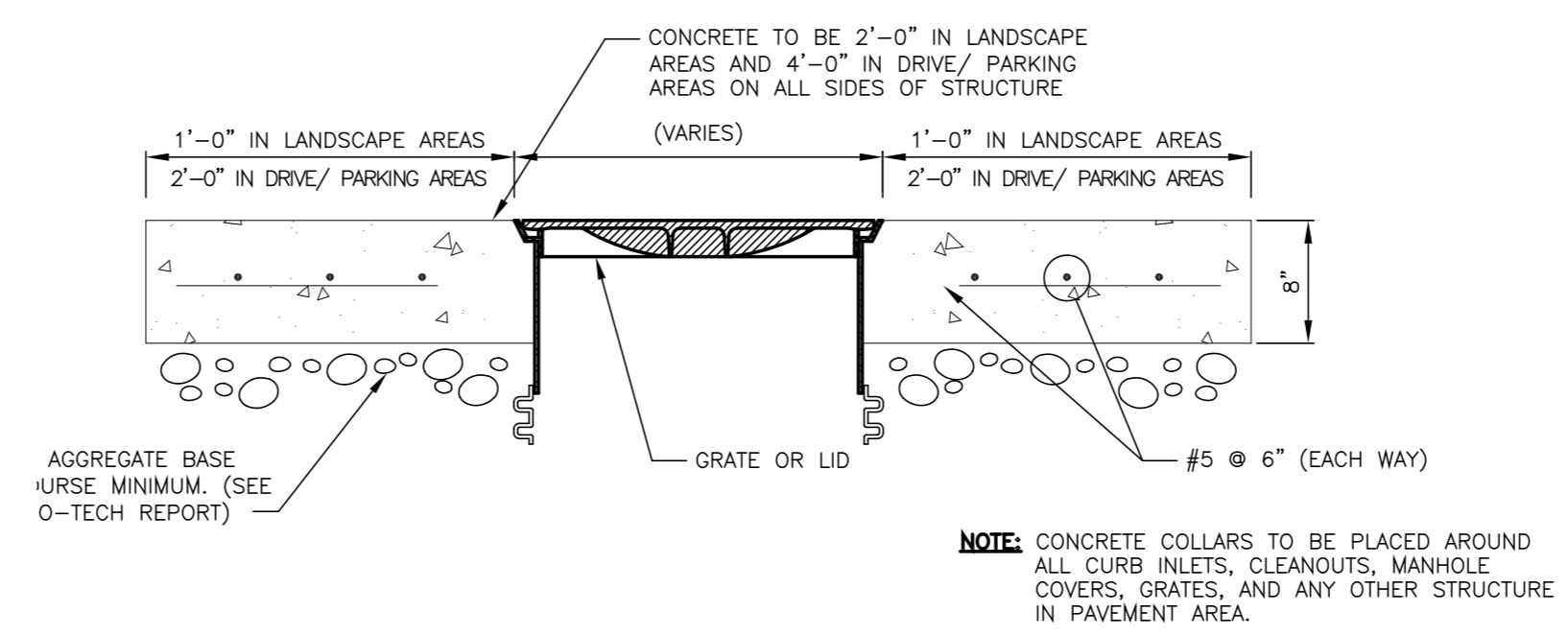
03 FREESTANDING SIGN (03)
 C5.1 3/8"=1'-0"



04 DIRECTIONAL SIGN (05)
 C5.1 3/8"=1'-0"



05 STANDARD CONCRETE CURB AND GUTTER
 C5.1 1"=1'-0"



06 TYPICAL CONCRETE COLLAR DETAIL
 C5.1 1"=1'-0"

M:\Projects\222-Sturbridge, MA\222-06 - Sturbridge, MA (2022 Parking Island Reconfigure)\000-Anytown, USA (2022 parking island changes)\Drawings\Civil\Prop\222-06_AS5 - island reconfigure.dwg, 3/1/2022 2:42:18 PM, Oversize A1, 1:1