



PRELIMINARY PARKING LOT SIDE ELEVATION
1/8" = 1'-0"

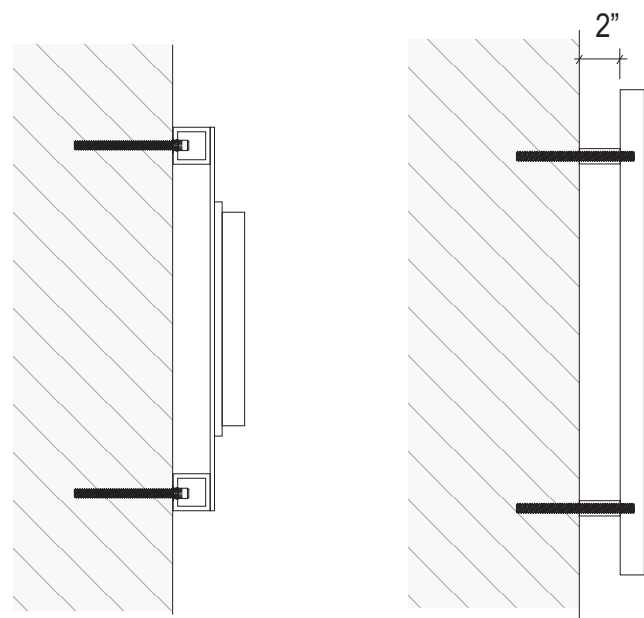
SIGN AREA ALLOWANCE = 30.0 SQ.FT.
SIGN AREA PROPOSED = 25.06 SQ.FT.



SIGN ELEVATION: 3/8" = 1'-0" 18.86 SQ.FT.

SIGN CONSTRUCTION (PANERA BREAD):

- 1/2" THICK ACRYLIC PAINTED SATIN BLACK
- STUD MOUNTED & PROJECTED 2" OFF WALL



TYPICAL SECTION THRU DRIVE THRU
NTS

TYPICAL SECTION THRU PANERA BREAD
NTS



SIGN ELEVATION: 3/8" = 1'-0" 6.2 SQ.FT.

SIGN CONSTRUCTION (DRIVE THRU):

- 1" THICK BACKGROUND PANEL PAINTED SATIN WHITE WITH BLACK PAINTED BORDER
- "DRIVE THRU" 1/2" BLACK ACRYLIC LETTERS
- ALL LETTERS TO HAVE THREADED INSERTS FOR THREADED ROD INSTALLATION.



MANDEVILLE SIGN
making your mark.

676 GEORGE WASHINGTON HIGHWAY
LINCOLN, RI 02865-4255

401-334-9100 401-334-7799
PHONE FAX

WEB www.mandevillesign.com

APPROVALS

Signatures Required Before Release to Production

Engineering	BY	DATE
Sales	BY	DATE
Estimating	BY	DATE
Production	BY	DATE
Quality Control	BY	DATE

PDF NAME

REVISIONS

NO.	BY	DESCRIPTION	DATE
1	XX	xxxxxxxxxxxx	00/00/00
2			
3			
4			
5			
6			
7			
8			
9			
10			

All electrical signs shall comply with the National Electric Code (Article 600) and be manufactured according to Underwriters Laboratories U.L. 48 standards and labeled accordingly.

30330-1



CUSTOMER

2132

STORE NUMBER

STURBRIDGE, MA

LOCATION

PROJECT MANAGER **Carla**

ARTIST DATE **10/25/17**

30330.1

DRAWING NAME



MANDEVILLE SIGN
making your mark.

676 GEORGE WASHINGTON HIGHWAY
LINCOLN, RI 02865-4255

401-334-9100 401-334-7799
PHONE FAX

www.mandevillesign.com
WEB

APPROVALS

Signatures Required Before Release to Production

Engineering	BY	DATE
Sales	BY	DATE
Estimating	BY	DATE
Production	BY	DATE
Quality Control	BY	DATE

PDF NAME

REVISIONS

NO.	BY	DESCRIPTION	DATE
1	WD	move signs, add lamps	11/01/17
2			
3			
4			
5			
6			
7			
8			
9			
10			

All electrical signs shall comply with the National Electric Code (Article 600) and be manufactured according to Underwriters Laboratories U.L. 48 standards and labeled accordingly.

30330-1



CUSTOMER

2132

STORE NUMBER

STURBRIDGE, MA

LOCATION

PROJECT MANAGER **Carla**

ARTIST DATE **10/25/17**

30330.2

DRAWING NAME



PRELIMINARY BOSTON ROAD ELEVATION

1/8" = 1'-0"

±96"

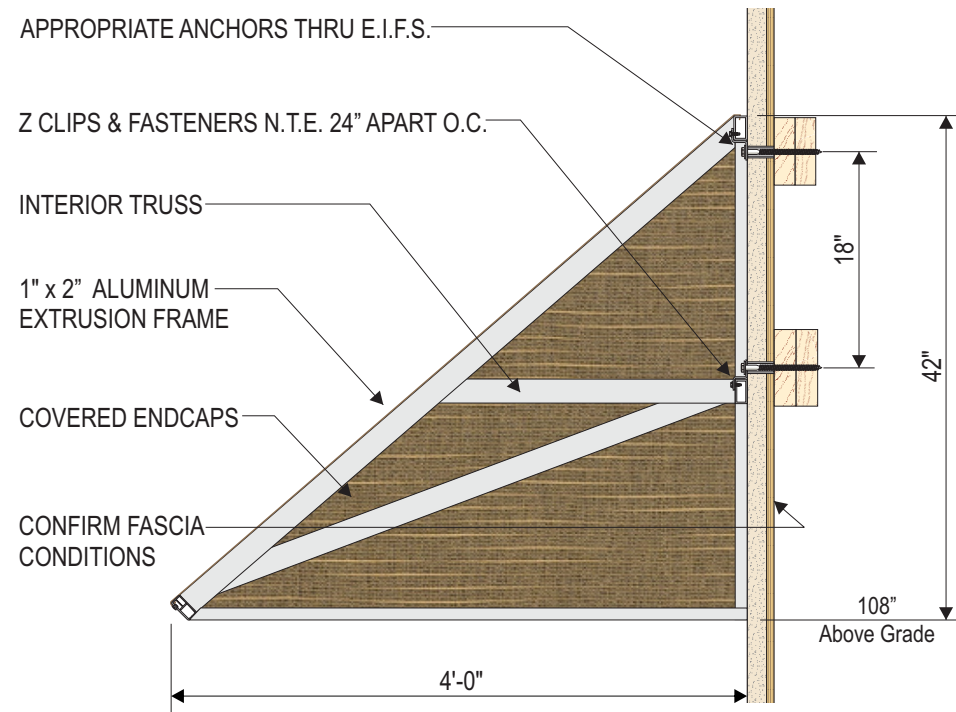
169 1/4"

16" **PANERA BREAD**

SIGN ELEVATION: 3/8" = 1'-0" **18.86 SQ.FT.**

SIGN CONSTRUCTION (PANERA BREAD):

- 1/2" THICK ACRYLIC PAINTED SATIN BLACK
- STUD MOUNTED & PROJECTED 2" OFF WALL



DRIVE THRU AWNING SECTION ONLY: 3/4" = 1'-0"

EXTERNALLY ILLUMINATED DRIVE THRU AWNING:

- 1" x 2" x .125" ALUMINUM EXTRUSION WELDED FRAME
- FRAME POWDER COATED # 21100 SEIBERT SILVER
- TRUSS SPACING N.T.E. 24" APART O.C.
- SUNBRELLA #4860 "SILICA SESAME" FABRIC COVER
- GRAY PVC TRIM STAPLE COVER
- MOUNTED USING Z-CLIPS & APPROPRIATE ANCHORS
- G.C. TO PROVIDE 2" x 6" BLOCKING IF NECESSARY



SIGN ELEVATION: 3/8" = 1'-0" **6.2 SQ.FT.**

SIGN CONSTRUCTION (DRIVE THRU):

- 1" THICK BACKGROUND PANEL PAINTED SATIN WHITE WITH BLACK PAINTED BORDER
- "DRIVE THRU" 1/2" BLACK ACRYLIC LETTERS
- ALL LETTERS TO HAVE THREADED INSERTS FOR THREADED ROD INSTALLATION.



PRELIMINARY ROUTE 20 ELEVATION
1/4" = 1'-0"



SIGN ELEVATION: 3/8" = 1'-0" **18.86 SQ.FT.**

SIGN CONSTRUCTION (PANERA BREAD):

- 1/2" THICK ACRYLIC PAINTED SATIN BLACK
- STUD MOUNTED & PROJECTED 2" OFF WALL

ARTWORK EXCLUSIVE PROPERTY OF
SINCE 1917



MANDEVILLE SIGN
making your mark.

676 GEORGE WASHINGTON HIGHWAY
LINCOLN, RI 02865-4255

401-334-9100 401-334-7799
PHONE FAX

WEB www.mandevillesign.com

APPROVALS

Signatures Required Before Release to Production

Engineering

BY _____ DATE _____

Sales

BY _____ DATE _____

Estimating

BY _____ DATE _____

Production

BY _____ DATE _____

Quality Control

BY _____ DATE _____

PDF NAME

REVISIONS

NO.	BY	DESCRIPTION	DATE
1	XX	xxxxxxxxxxxx	00/00/00
2			
3			
4			
5			
6			
7			
8			
9			
10			

All electrical signs shall comply with the National Electric Code (Article 600) and be manufactured according to Underwriters Laboratories U.L. 48 standards and labeled accordingly.

30330-1

**PANERA
BREAD
DRIVE THRU**

CUSTOMER

2132

STORE NUMBER

STURBRIDGE, MA

LOCATION

PROJECT MANAGER **Carla**

ARTIST _____ DATE **10/25/17**

30330.3

DRAWING NAME



PRELIMINARY SITE ENTRANCE ELEVATION

1/4" = 1'-0"

ARTWORK EXCLUSIVE PROPERTY OF
SINCE 1917



MANDEVILLE SIGN
making your mark.

676 GEORGE WASHINGTON HIGHWAY
LINCOLN, RI 02865-4255

401-334-9100 401-334-7799
PHONE FAX

WEB www.mandevillesign.com

APPROVALS

Signatures Required Before Release to Production

Engineering

BY _____ DATE _____

Sales

BY _____ DATE _____

Estimating

BY _____ DATE _____

Production

BY _____ DATE _____

Quality Control

BY _____ DATE _____

PDF NAME

REVISIONS

NO.	BY	DESCRIPTION	DATE
1	XX	xxxxxxxxxxxx	00/00/00
2			
3			
4			
5			
6			
7			
8			
9			
10			

All electrical signs shall comply with the National Electric Code (Article 600) and be manufactured according to Underwriters Laboratories U.L. 48 standards and labeled accordingly.

30330-1

**PANERA
BREAD
DRIVE THRU**

CUSTOMER

2132

STORE NUMBER

STURBRIDGE, MA

LOCATION

Carla

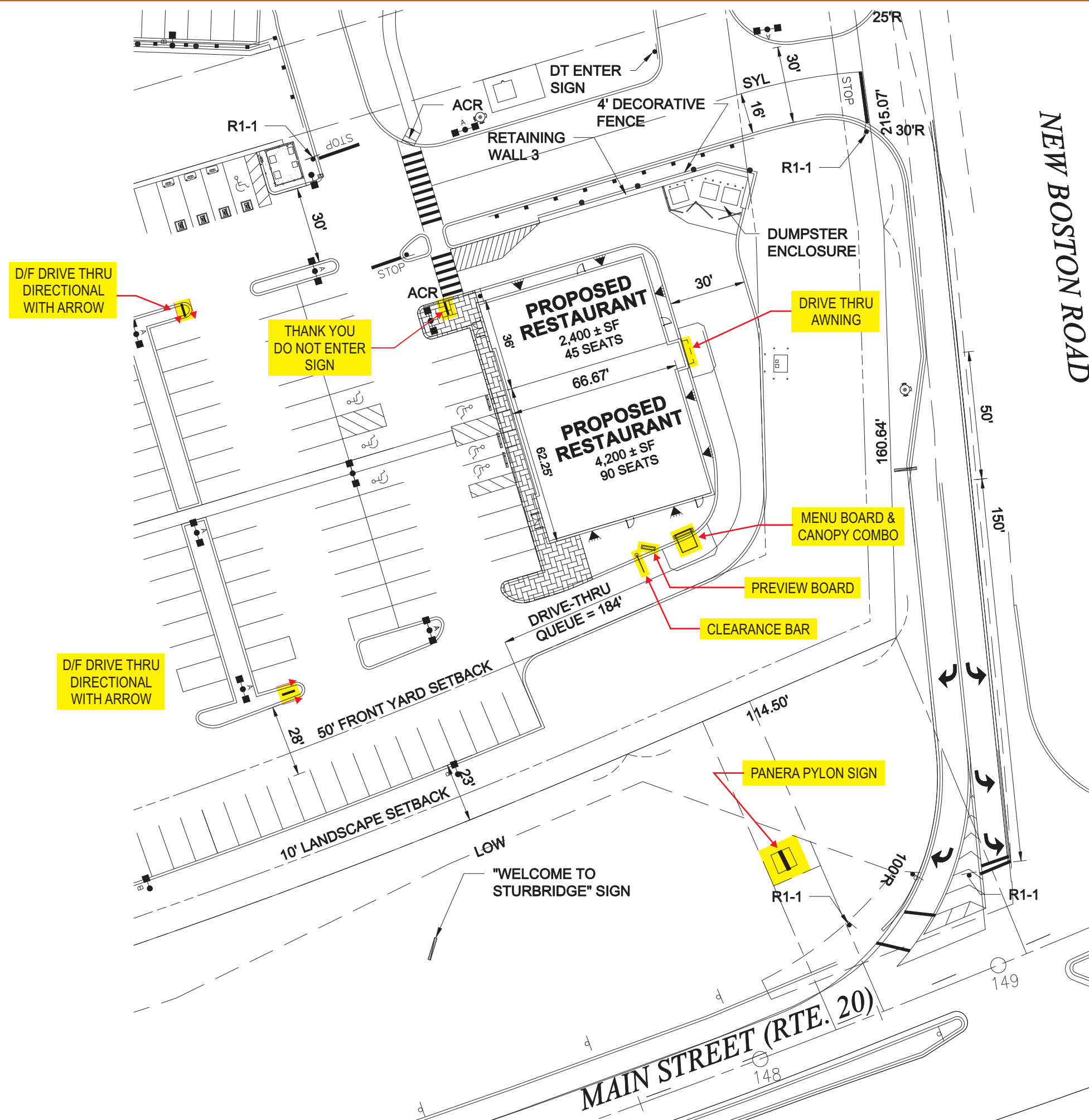
PROJECT MANAGER

10/25/17

ARTIST DATE

30330.4

DRAWING NAME



SITE PLAN: NOT TO SCALE

ARTWORK EXCLUSIVE PROPERTY OF
 SINCE 1917

MANDEVILLE SIGN
making your mark.
 676 GEORGE WASHINGTON HIGHWAY
 LINCOLN, RI 02865-4255
 401-334-9100 401-334-7799
 PHONE FAX
 www.mandevillesign.com
 WEB

APPROVALS
Signatures Required Before Release to Production

Engineering	BY	DATE
Sales	BY	DATE
Estimating	BY	DATE
Production	BY	DATE
Quality Control	BY	DATE

PDF NAME

REVISIONS

NO.	BY	DESCRIPTION	DATE
1	XX	xxxxxxxxxxxx	00/00/00
2			
3			
4			
5			
6			
7			
8			
9			
10			

All electrical signs shall comply with the National Electric Code (Article 600) and be manufactured according to Underwriters Laboratories U.L. 48 standards and labeled accordingly.

30330-1

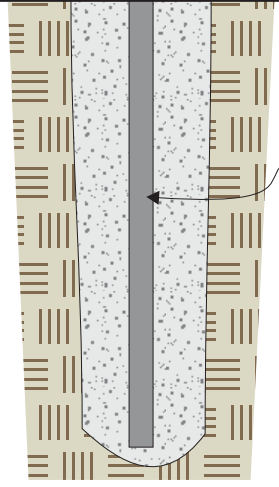
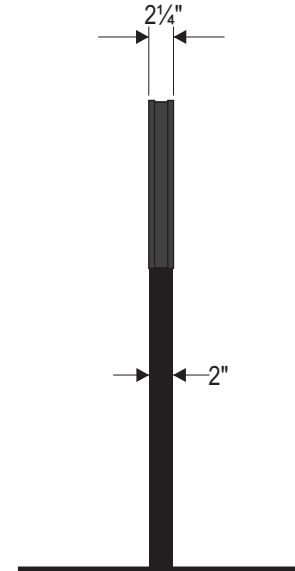
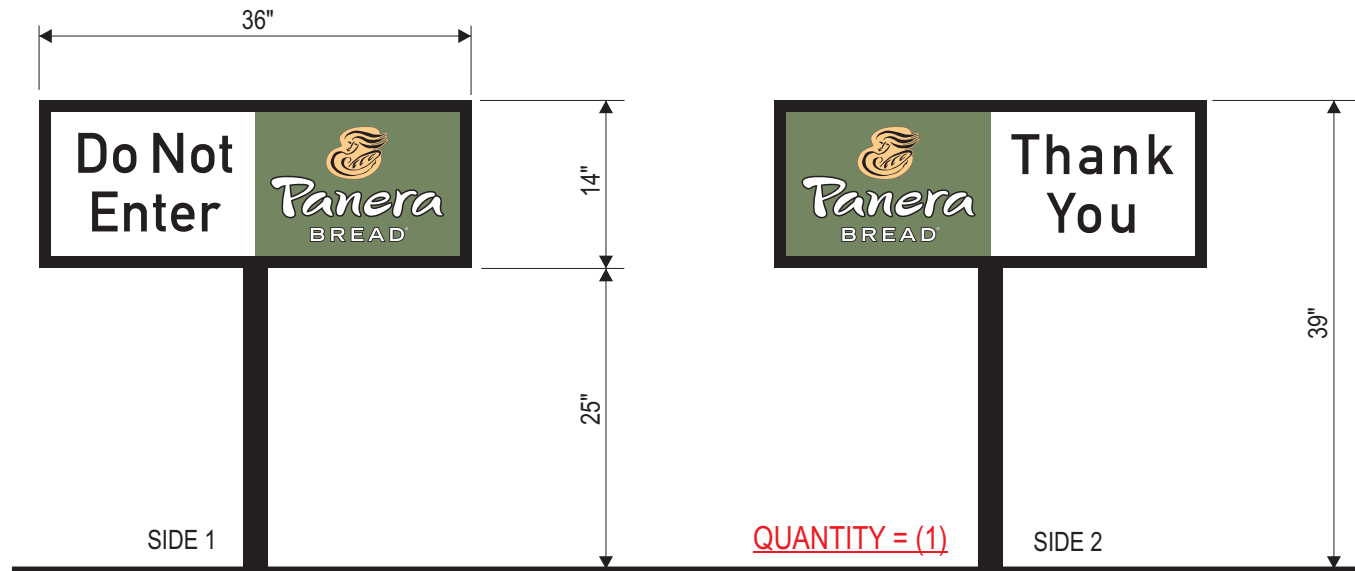


CUSTOMER
 2132
 STORE NUMBER

STURBRIDGE, MA
 LOCATION

Carla
 PROJECT MANAGER
 10/25/17
 ARTIST DATE

30330.5
 DRAWING NAME



D/F SPLIT-FACE DIRECTIONAL SIGN w/ LOGO

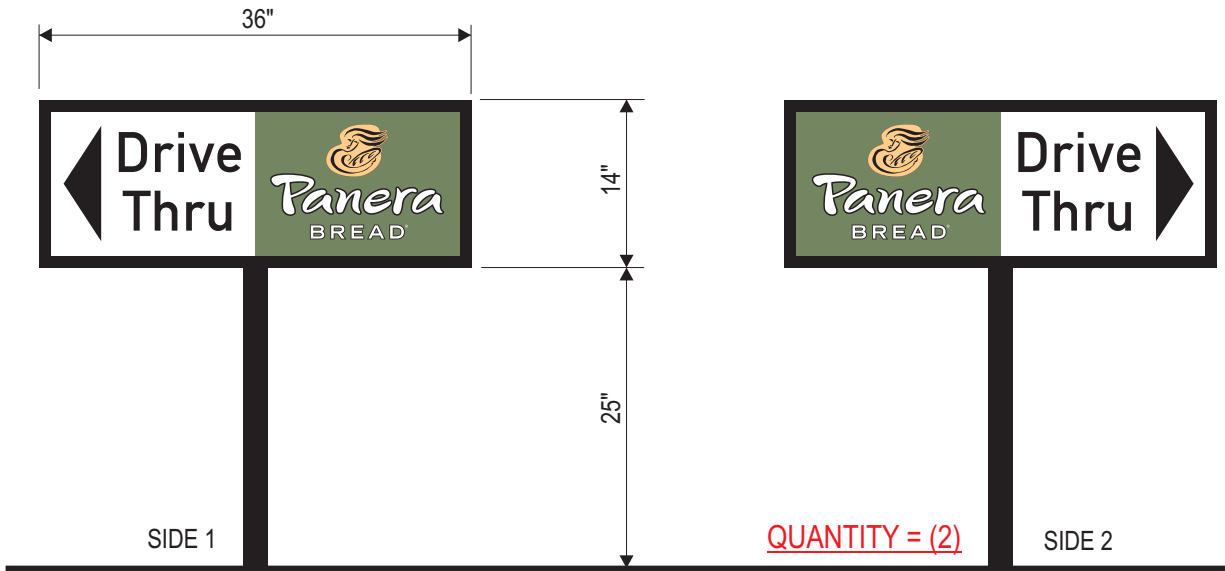
DIRECT BURIAL IN FREE-FORMED CONCRETE FOOTING

Area = 3.5 sq.ft each

DIRECTIONAL SIGNS
3/4" = 1'-0"

NON ILLUMINATED DIRECTIONAL SIGNS:

- 2" DEEP ALUM. PANEL CONSTRUCTION PAINTED BLACK
- .090 ALUMINUM FACES
- PMS 5753C OPAQUE GREEN FIELD/BACKGROUND
- DIGITALLY PRINTED GRAPHICS ON REFLECTIVE PSV (VINYL)
- COLORS AS SHOWN: BLACK, WHITE & PMS 1355U PEACH IF REQUIRED.
- BACKS OF SINGLE FACED SIGNS PAINTED BLACK
- BLACK 2" x 2" x 1/4" WALL ALUM. SQ. TUBE POSTS
- DIRECT BURIAL IN FREE-FORMED CONCRETE FOOTING



D/F SPLIT-FACE DIRECTIONAL SIGN w/ LOGO

ARTWORK EXCLUSIVE PROPERTY OF
SINCE 1917

MANDEVILLE SIGN
making your mark.

676 GEORGE WASHINGTON HIGHWAY
LINCOLN, RI 02865-4255

401-334-9100 401-334-7799
PHONE FAX

WEB www.mandevillesign.com

APPROVALS
Signatures Required Before Release to Production

Engineering	BY	DATE
Sales	BY	DATE
Estimating	BY	DATE
Production	BY	DATE
Quality Control	BY	DATE

PDF NAME

REVISIONS

NO.	BY	DESCRIPTION	DATE
1	XX	xxxxxxxxxxxx	00/00/00
2			
3			
4			
5			
6			
7			
8			
9			
10			

All electrical signs shall comply with the National Electric Code (Article 600) and be manufactured according to Underwriters Laboratories U.L. 48 standards and labeled accordingly.

30330-1

CUSTOMER

STORE NUMBER **2132**

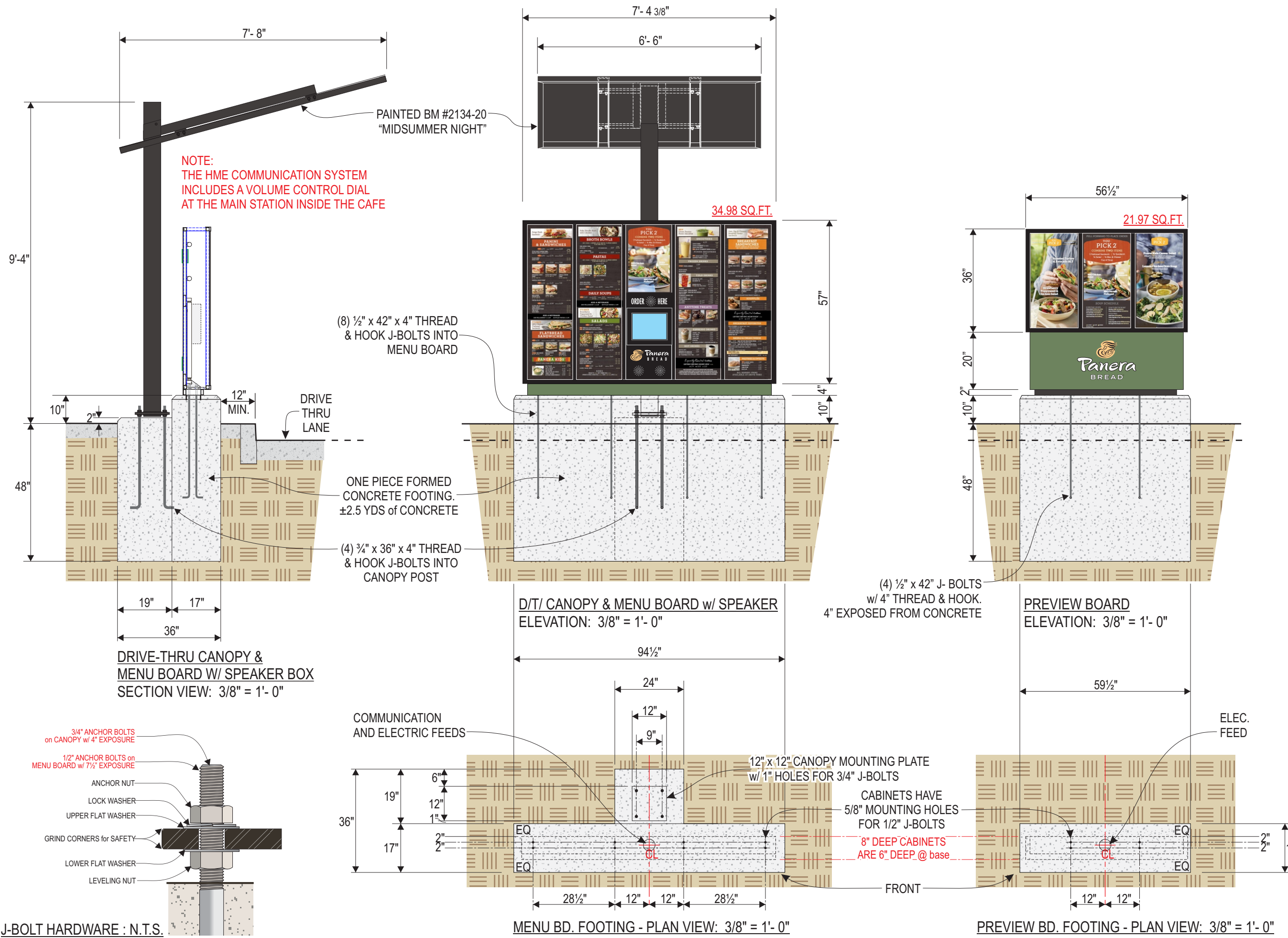
LOCATION **STURBRIDGE, MA**

PROJECT MANAGER **Carla**

ARTIST **10/25/17**
DATE

30330.6

DRAWING NAME



ARTWORK EXCLUSIVE PROPERTY OF
SINCE 1917

MANDEVILLE SIGN
making your mark.

676 GEORGE WASHINGTON HIGHWAY
LINCOLN, RI 02865-4255

401-334-9100 401-334-7799
PHONE FAX

WEB www.mandevillesign.com

APPROVALS
Signatures Required Before Release to Production

Engineering	BY	DATE
Sales	BY	DATE
Estimating	BY	DATE
Production	BY	DATE
Quality Control	BY	DATE

PDF NAME

REVISIONS

NO.	BY	DESCRIPTION	DATE
1	XX	xxxxxxxxxxxx	00/00/00
2			
3			
4			
5			
6			
7			
8			
9			
10			

All electrical signs shall comply with the National Electric Code (Article 600) and be manufactured according to Underwriters Laboratories U.L. 48 standards and labeled accordingly.

30330-1

CUSTOMER

STORE NUMBER 2132

LOCATION STURBRIDGE, MA

PROJECT MANAGER Carla

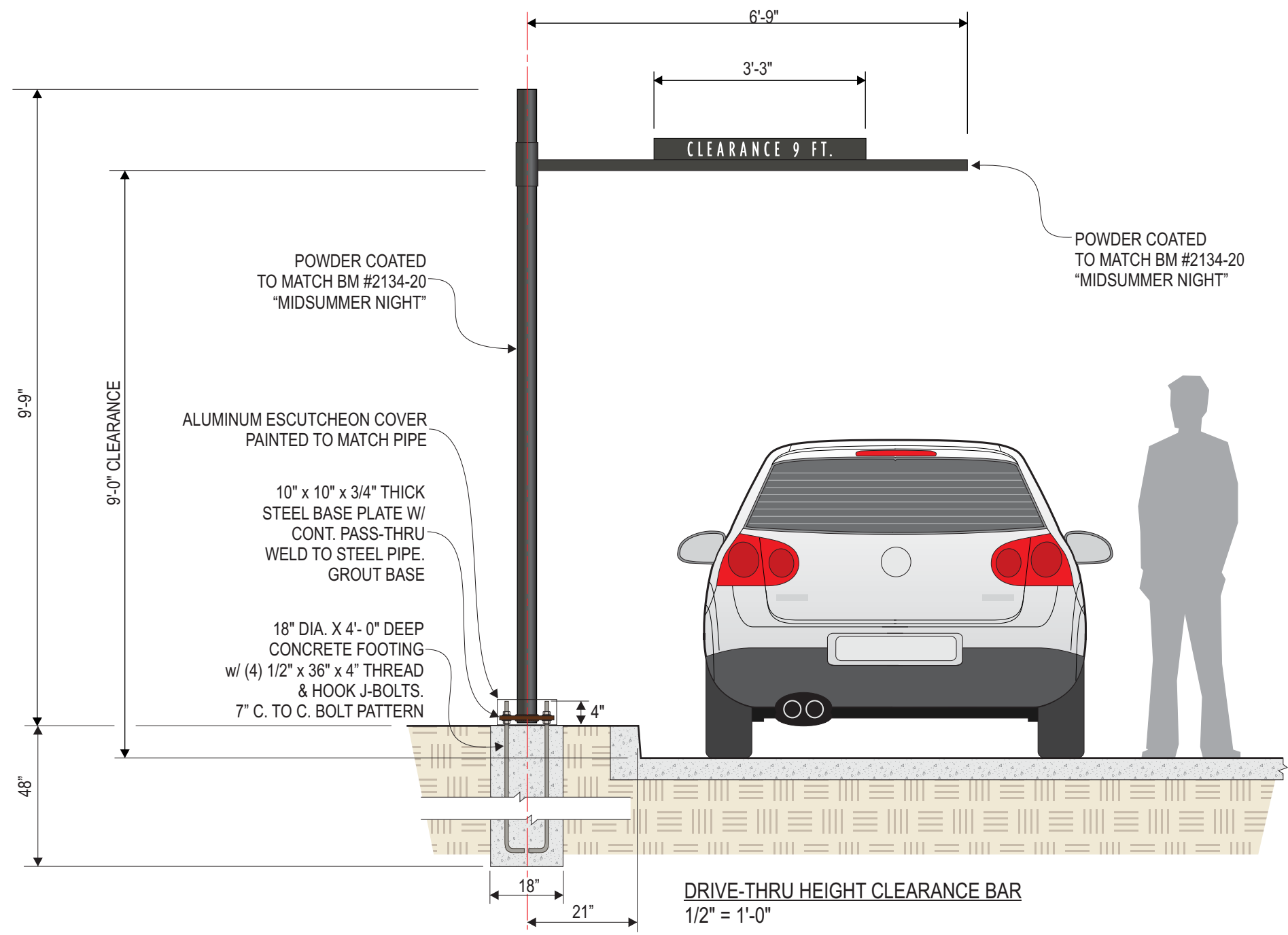
ARTIST DATE 10/25/17

DRAWING NAME 30330.7



TYPE FONT: TRIPLEX CONDENSED REGULAR, 20% LETTER SPACING

CLEARANCE BAR SIGN
1/2" = 1'-0"



DRIVE-THRU HEIGHT CLEARANCE BAR
1/2" = 1'-0"



MANDEVILLE SIGN
making your mark.

676 GEORGE WASHINGTON HIGHWAY
LINCOLN, RI 02865-4255

401-334-9100 401-334-7799
PHONE FAX

www.mandevillesign.com
WEB

APPROVALS
Signatures Required Before Release to Production

Engineering	
BY	DATE
Sales	
BY	DATE
Estimating	
BY	DATE
Production	
BY	DATE
Quality Control	
BY	DATE

PDF NAME

REVISIONS

NO.	BY	DESCRIPTION	DATE
1	XX	xxxxxxxxxxxx	00/00/00
2			
3			
4			
5			
6			
7			
8			
9			
10			

All electrical signs shall comply with the National Electric Code (Article 600) and be manufactured according to Underwriters Laboratories U.L. 48 standards and labeled accordingly.

30330-1



CUSTOMER

STORE NUMBER **2132**

STURBRIDGE, MA

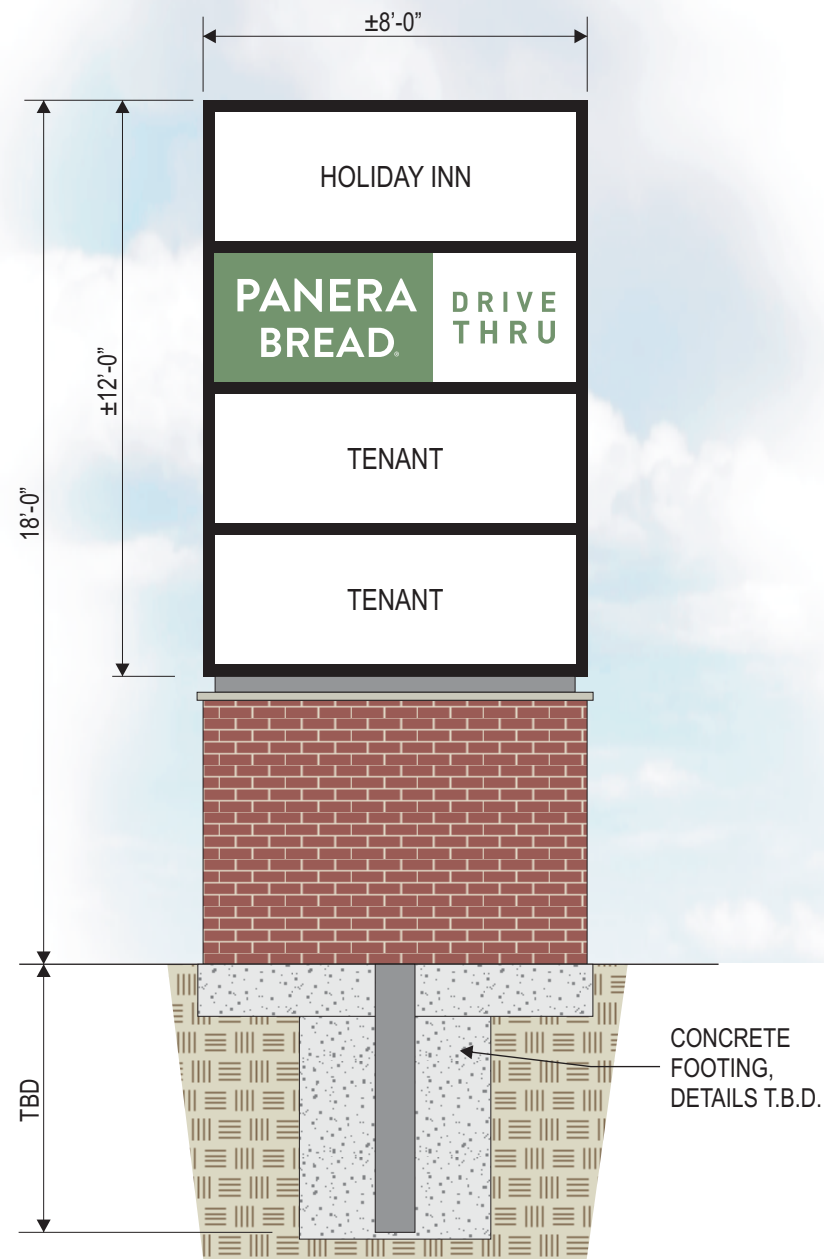
LOCATION

PROJECT MANAGER **Carla**

ARTIST DATE **10/25/17**

30330.8

DRAWING NAME



PYLON SIGN ELEVATION: 1/4" = 1'-0"

±96 SQ.FT.

NEW D/F ILLUMINATED PYLON SIGN:

- ALUMINUM FABRICATED SIGN CABINET
- (BLACK) PAINTED CABINET, RETAINERS
- WHITE POLYCARBONATE FACES
- PMS 5757U GREEN OPAQUE BACKGROUND (PANERA)
 - WHITE ILLUMINATED GRAPHICS
 - (WHITE) VINYL "®" REGISTERED SYMBOL
- WHITE LED ILLUMINATION
- U.L. & MANUFACTURERS LABELS
- CONCRETE FOOTING & STEEL SUPPORT DETAILS T.B.D.



MANDEVILLE SIGN
making your mark.

676 GEORGE WASHINGTON HIGHWAY
LINCOLN, RI 02865-4255

401-334-9100 401-334-7799
PHONE FAX

WEB www.mandevillesign.com

APPROVALS

Signatures Required Before Release to Production

Engineering	
BY	DATE
Sales	
BY	DATE
Estimating	
BY	DATE
Production	
BY	DATE
Quality Control	
BY	DATE

PDF NAME

REVISIONS

NO.	BY	DESCRIPTION	DATE
1	XX	xxxxxxxxxxxx	00/00/00
2			
3			
4			
5			
6			
7			
8			
9			
10			

All electrical signs shall comply with the National Electric Code (Article 600) and be manufactured according to Underwriters Laboratories U.L. 48 standards and labeled accordingly.

30330-1

**PANERA
BREAD
DRIVE THRU**

CUSTOMER

2132

STORE NUMBER

STURBRIDGE, MA

LOCATION

PROJECT MANAGER **Carla**

ARTIST DATE **10/25/17**

30330.9

DRAWING NAME