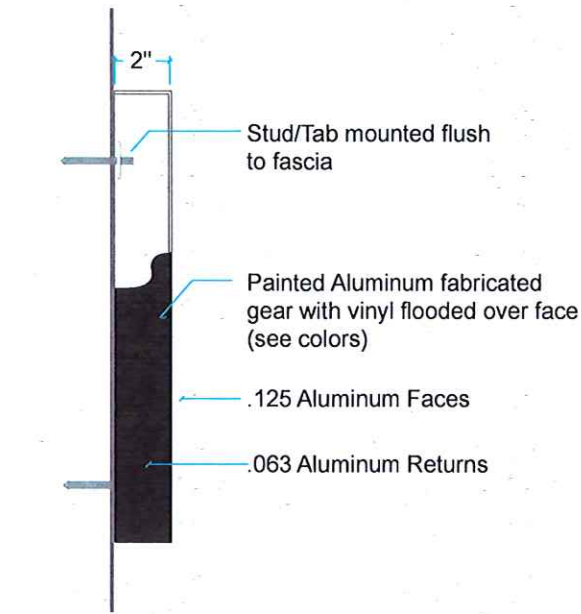


Fabricated Aluminum Logo (non-illuminated)  
Option 3. (87.25 sf)

A

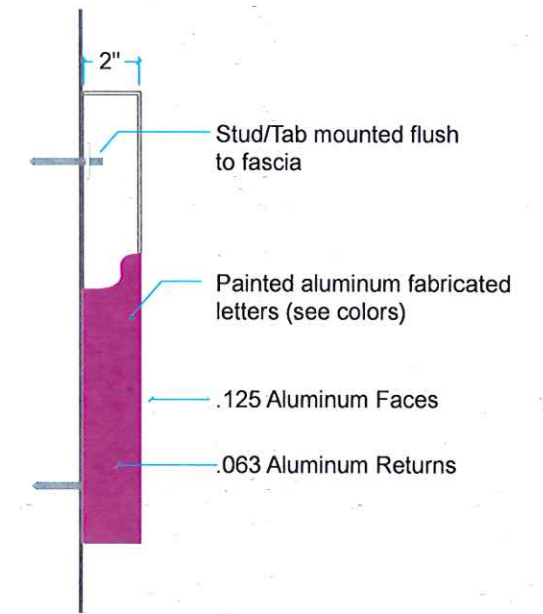


Side View of Gear Icon



S1 Side Elevation: Typical  
Scale: NTS

Side View of "Planet Fitness"



S2 Side Elevation: Typical  
Scale: NTS

RECEIVED

NOV 23 2021

DESIGN REVIEW COMMITTEE

E1 Elevation: (Qty-1) #12358 Fabricated Aluminum Logo  
Scale: 3/8"=1' Square Footage: 64.75" x 194" = 87.25 sf.



L1 Location View: Bldg. Front  
Scale: 1/8"=1'

Finished Fascia Measurements & Color (VIF)

Description:

- (Qty-1) Set of 2" (deep) fabricated aluminum gear and letters.
- .125" Aluminum faces with .063" returns.
- Logo gear to have surface applied digital printed graphics with lamination.
- Letters with tabs to be stud mounted flush to fascia as needed.

Logo/Typeface:

Logo on file - removed white outline around letters.

Colors:

- Gear (face & returns): - Aluminum Painted Black
- Gear (face vinyl): - Digitally Printed on 3M ControlTac cast vinyl
- Laminated with 3M 8518 gloss clear vinyl
- Printed PMS #108C (yellow)
- Printed PMS #2415C (purple)
- Printed Black (100%)

Letters (face & returns): - Aluminum Painted to match PMS #2415C (purple)

Installation:

By ViewPoint.

Job: Planet Fitness  
Location: 178 Main St. Sturbridge, MA  
Account Manager: Jeff Kwass  
File: PF\_178MainSt-SturbridgeMA\_FabLogo\_3a.ai  
Date: 11.17.21 .5 (Op3)  
Designer: Steven Monnetta

Revisions: \_\_\_\_\_  
Revisions: \_\_\_\_\_

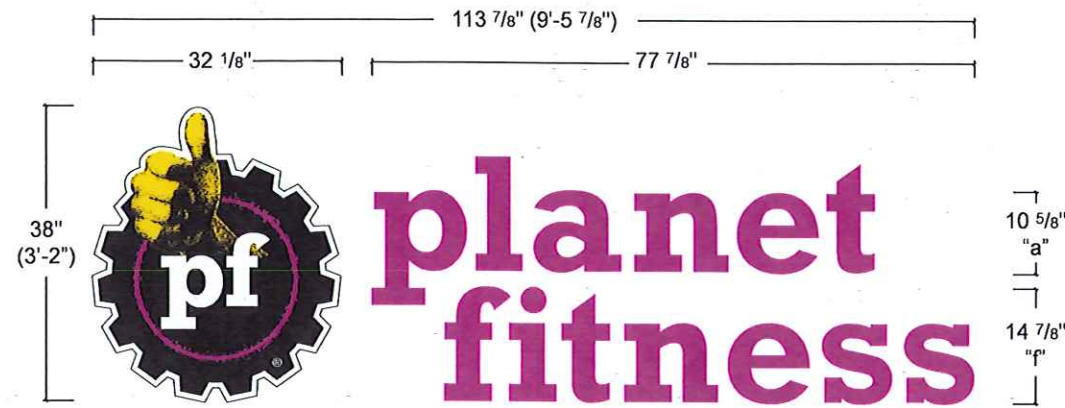
THIS PROPOSAL DRAWING CONTAINS ORIGINAL ELEMENTS  
CREATED BY VIEWPOINT SIGN AND AWNING. ALL RIGHTS RESERVED.  
UNAUTHORIZED DUPLICATION OR REPRODUCTION IS PROHIBITED.

**ViewPoint** SIGN AND AWNING  
1.508.393.8200  
FAX 1.508.393.4244

Customer Approval \_\_\_\_\_  
Acct. Manager Approval \_\_\_\_\_  
Production Approval \_\_\_\_\_

Fabricated Aluminum Logo (non-illuminated)  
Option 4. (30 sf)

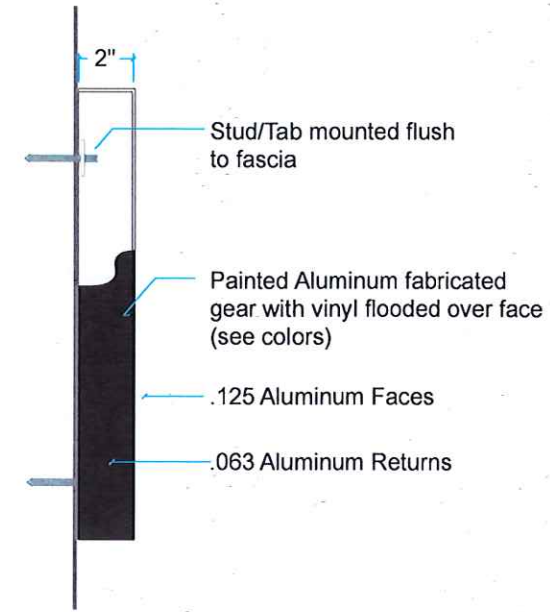
B.



E1 Elevation: (Qty-1) #12358 Fabricated Aluminum Logo  
Scale: 1/2"=1' Square Footage: 38"x113.875" = 30 sf.

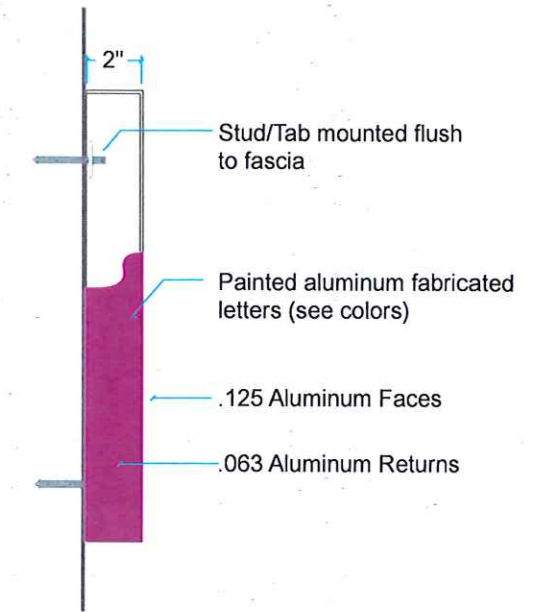
RECEIVED  
NOV 23 2021  
DESIGN REVIEW  
COMMITTEE

Side View of Gear Icon



S1 Side Elevation: Typical  
Scale: NTS

Side View of "Planet Fitness"



S2 Side Elevation: Typical  
Scale: NTS

Description:

- (Qty-1) Set of 2" (deep) fabricated aluminum gear and letters.
- .125" Aluminum faces with .063" returns.
- Logo gear to have surface applied digital printed graphics with lamination.
- Letters with tabs to be stud mounted flush to fascia as needed.

Logo/Typeface:

Logo on file - removed white outline around letters.

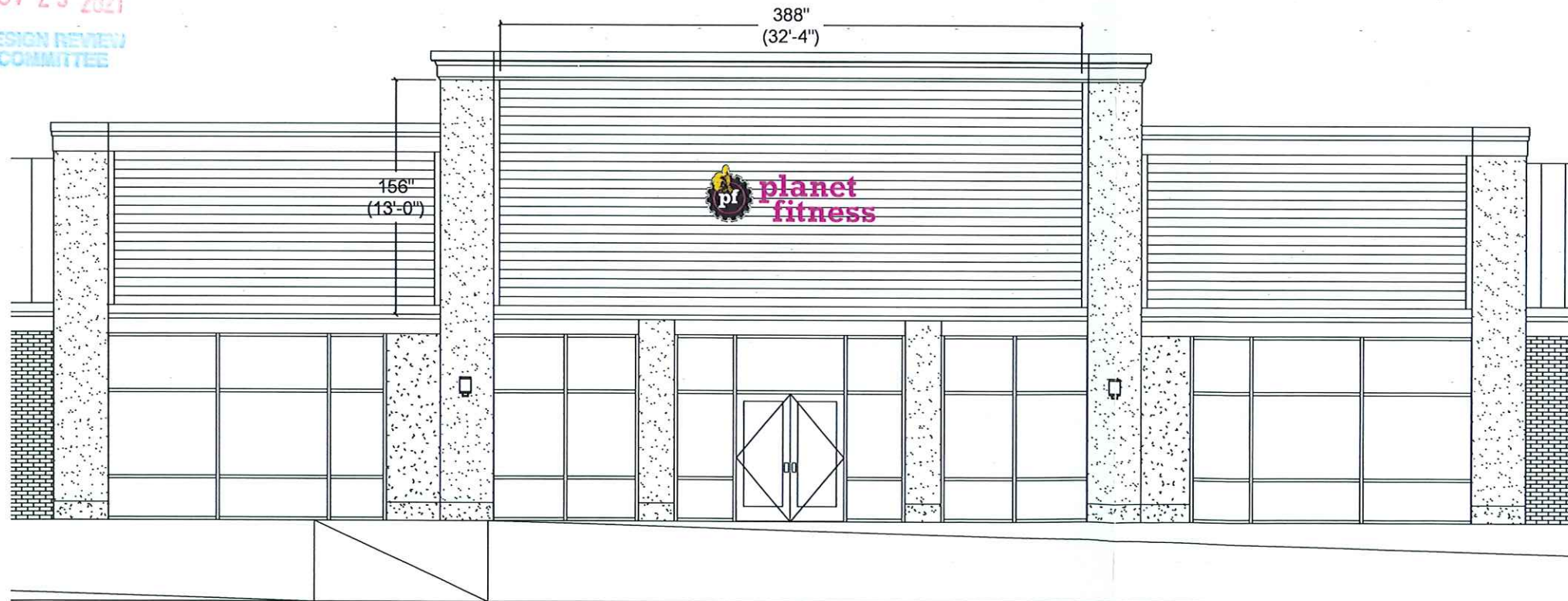
Colors:

- Gear (face & returns): - Aluminum Painted Black
- Gear (face vinyl): - Digitally Printed on 3M ControlTac cast vinyl
- Laminated with 3M 8518 gloss clear vinyl
- Printed PMS #108C (yellow)
- Printed PMS #2415C (purple)
- Printed Black (100%)

Letters (face & returns): - Aluminum Painted to match PMS #2415C (purple)

Installation:

By ViewPoint.



L1 Location View: Bldg. Front  
Scale: 1/8"=1'

Finished Fascia Measurements & Color (VIF)

Job: Planet Fitness  
Location: 178 Main St. Sturbridge, MA  
Account Manager: Jeff Kwass  
File: PF\_178MainSt-SturbridgeMA\_FabLogo\_4a.ai  
Date: 11.17.21 .5 (Op4)  
Designer: Steven Monnetta

Revisions: \_\_\_\_\_  
Revisions: \_\_\_\_\_

THIS PROPOSAL DRAWING CONTAINS ORIGINAL ELEMENTS  
CREATED BY VIEWPOINT SIGN AND AWNING. ALL RIGHTS RESERVED.  
UNAUTHORIZED DUPLICATION OR REPRODUCTION IS PROHIBITED.

**ViewPoint** SIGN AND AWNING  
1.508.393.8200  
FAX 1.508.393.4244

Customer Approval \_\_\_\_\_ Acct. Manager Approval \_\_\_\_\_ Production Approval \_\_\_\_\_