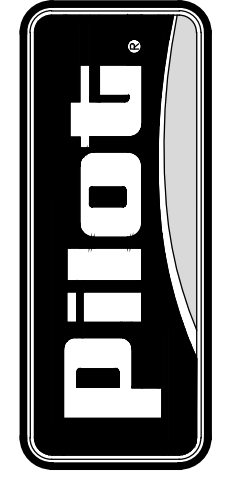


PILOT FLYING J
 DESIGN DEPARTMENT
 5508 LONAS ROAD
 KNOXVILLE, TENNESSEE 37909
 (865) 588-7488



DUMPSTER ENCLOSURE PLAN AND ELEVATIONS
PILOT TRAVEL CENTER
 400 ROUTE 15 (HAYNES STREET)
 STURBRIDGE, MA 01566

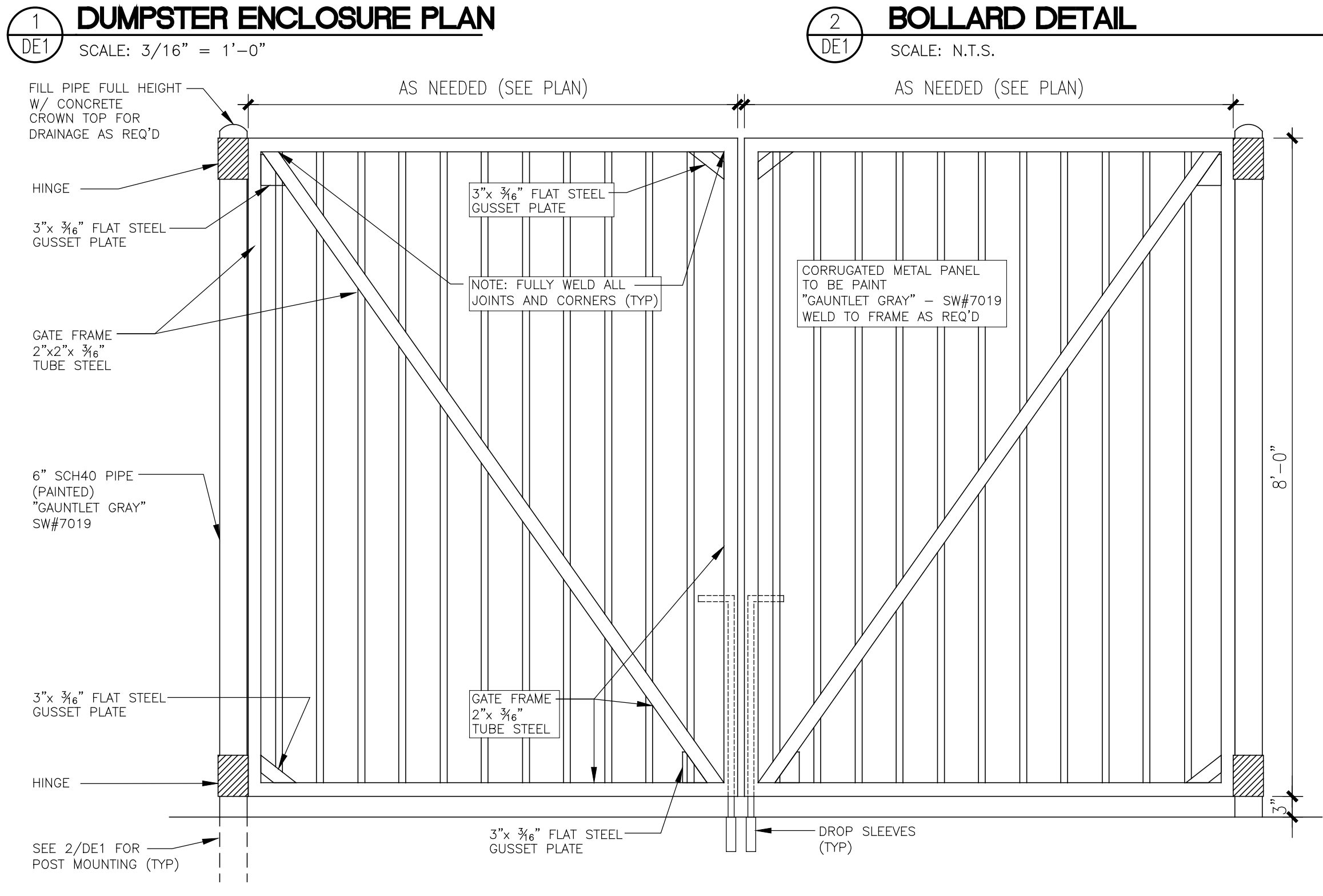
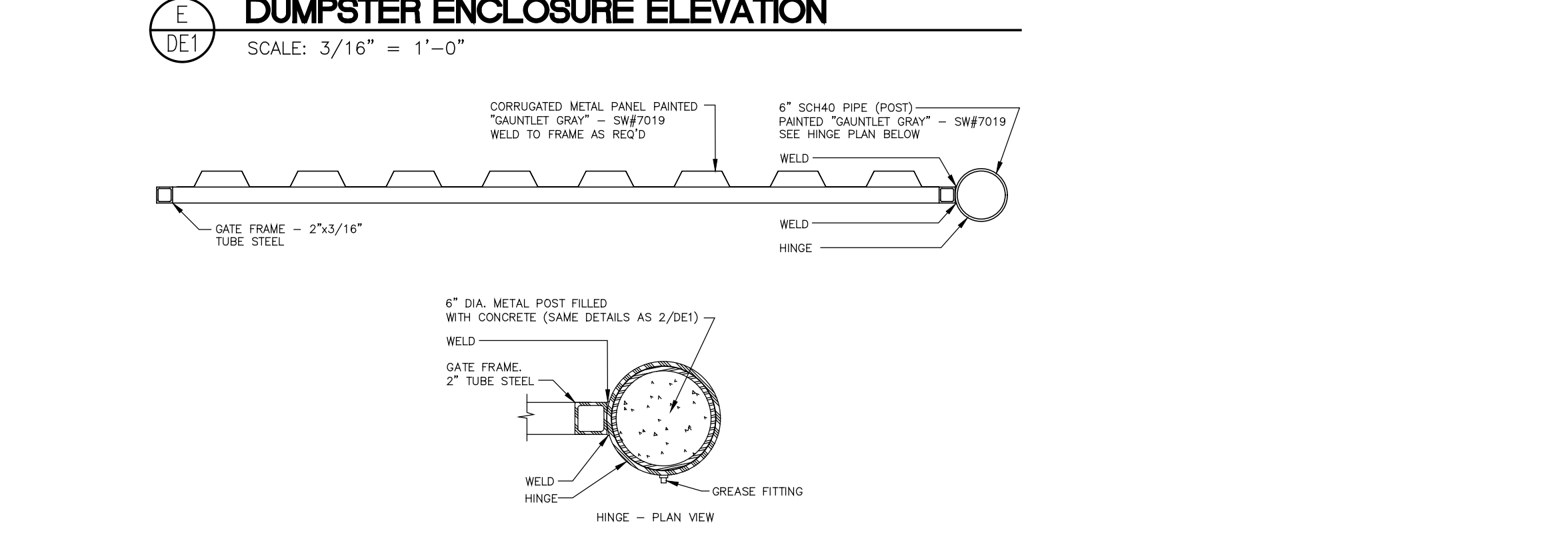
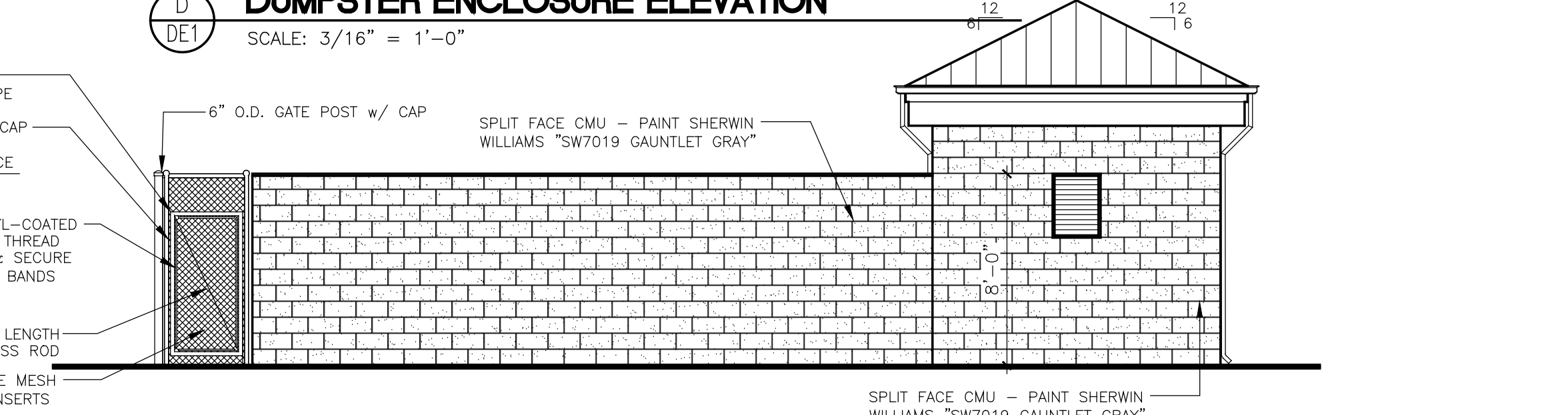
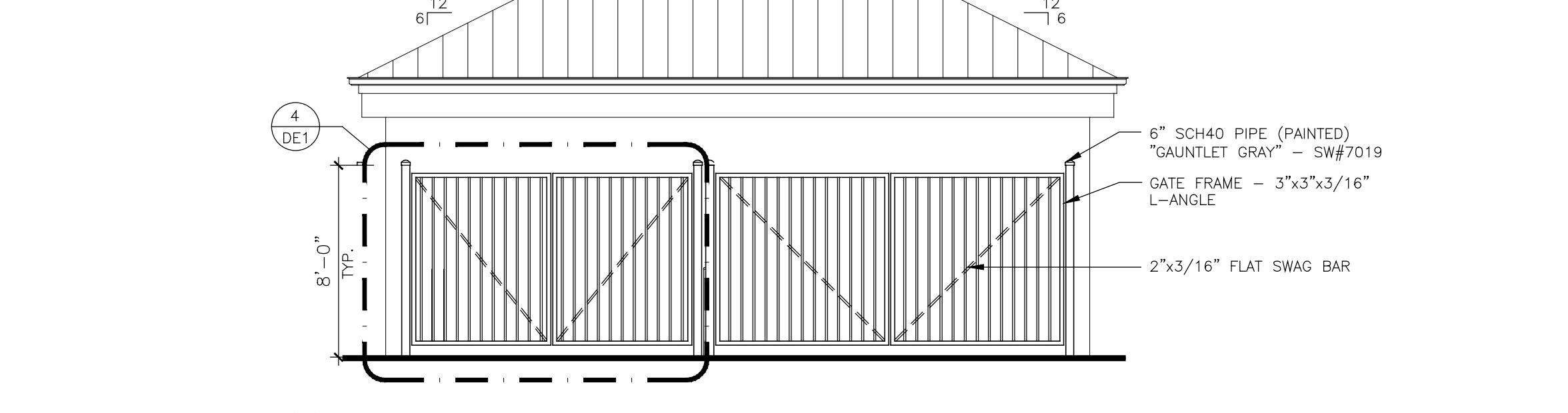
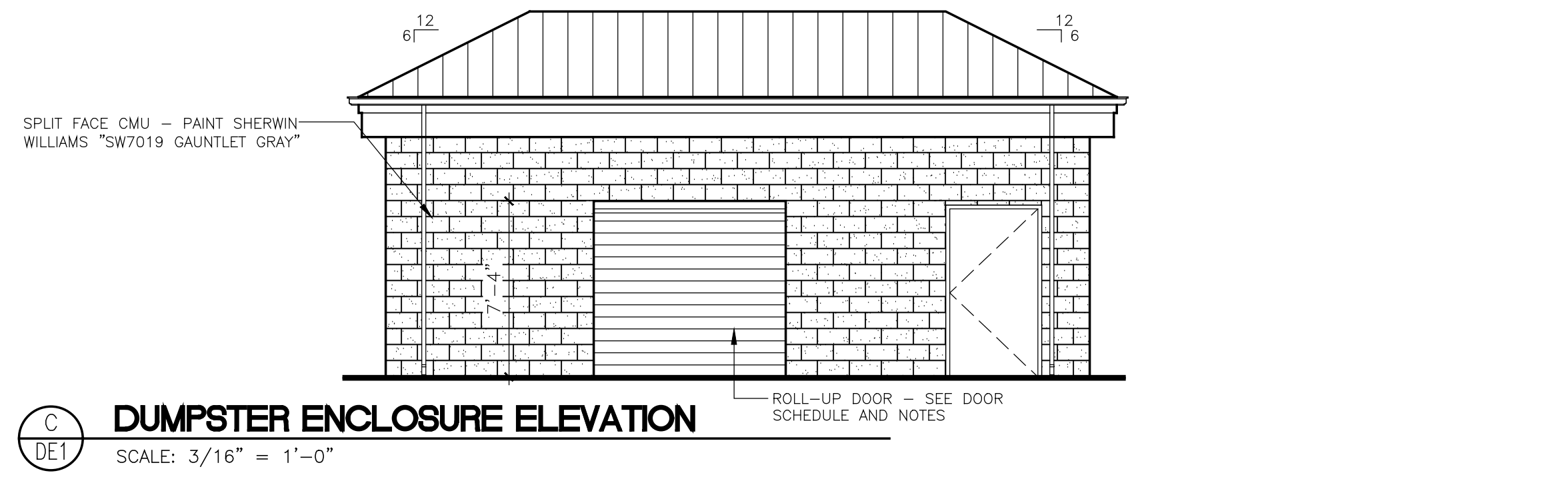
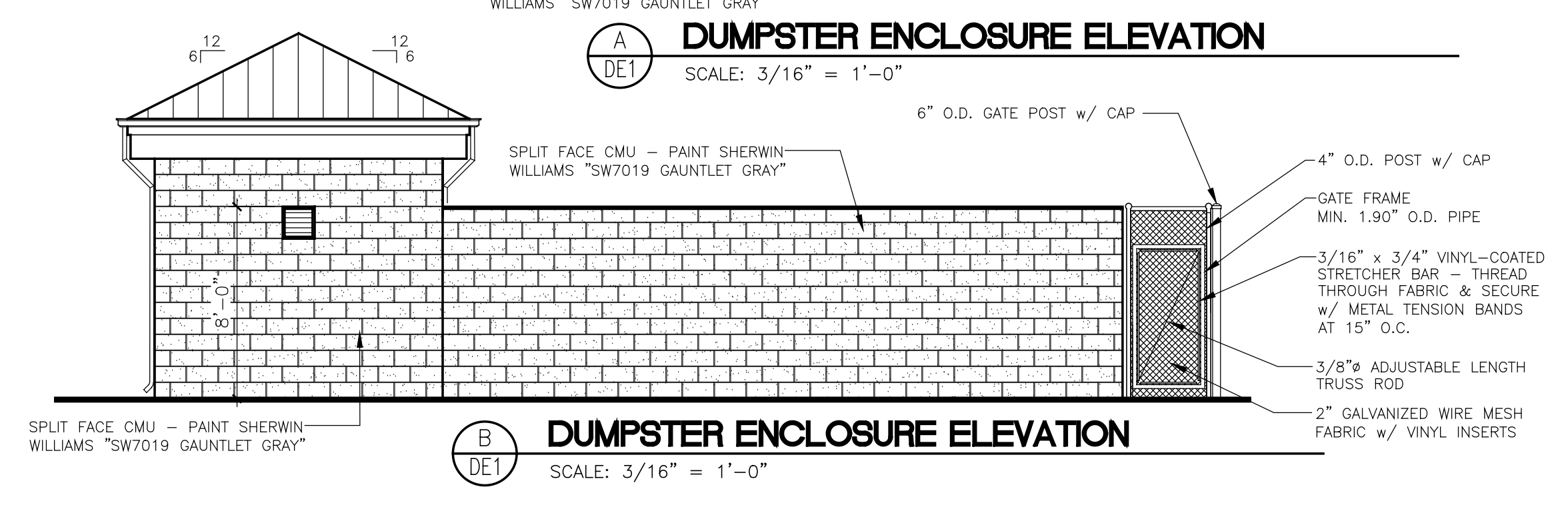
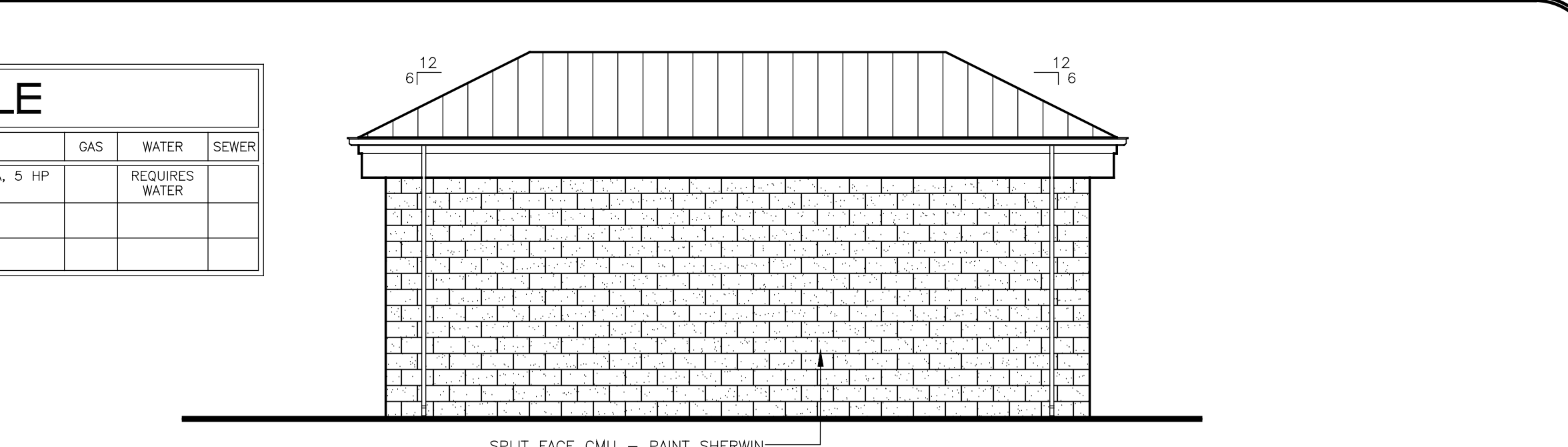
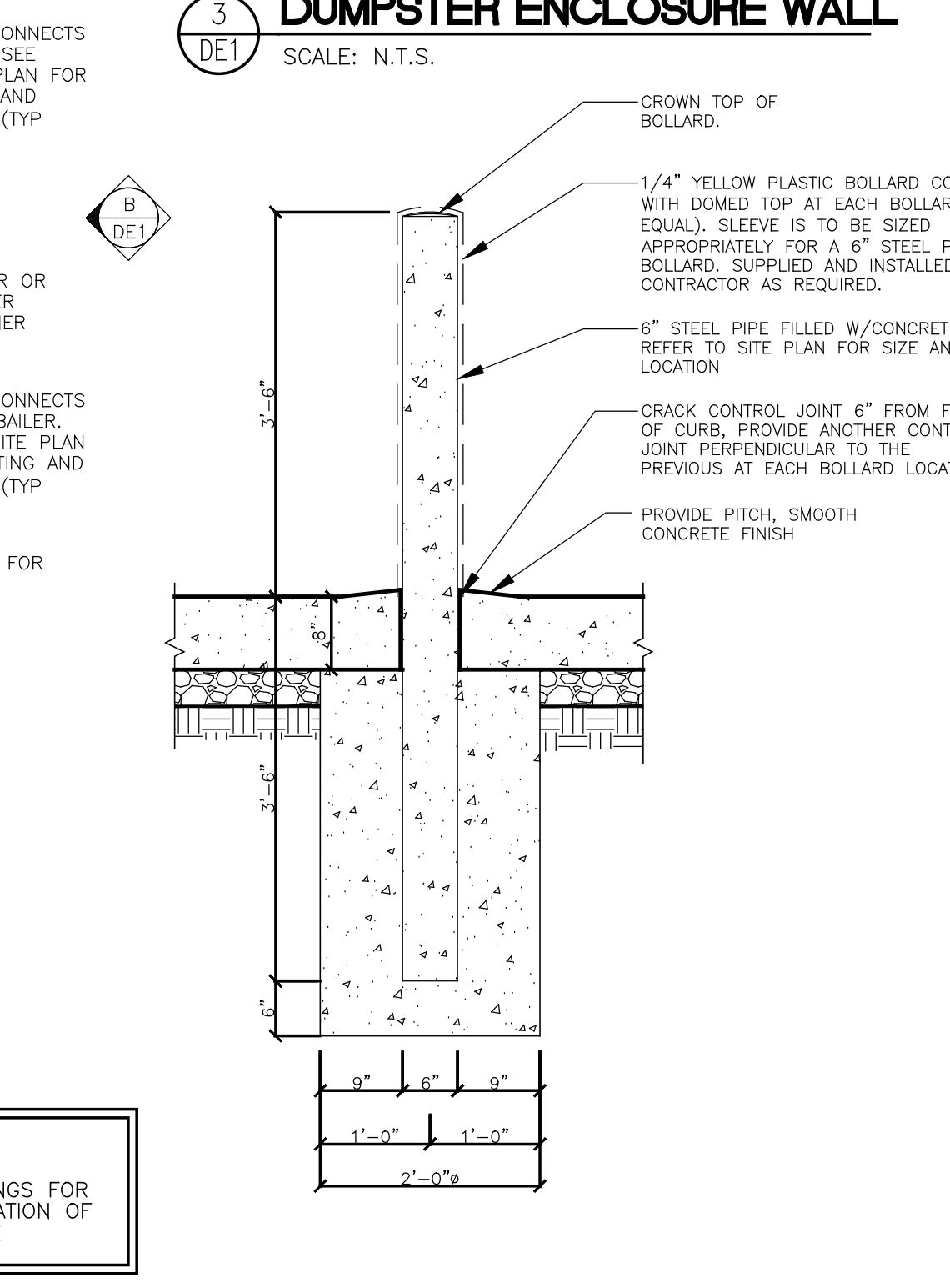
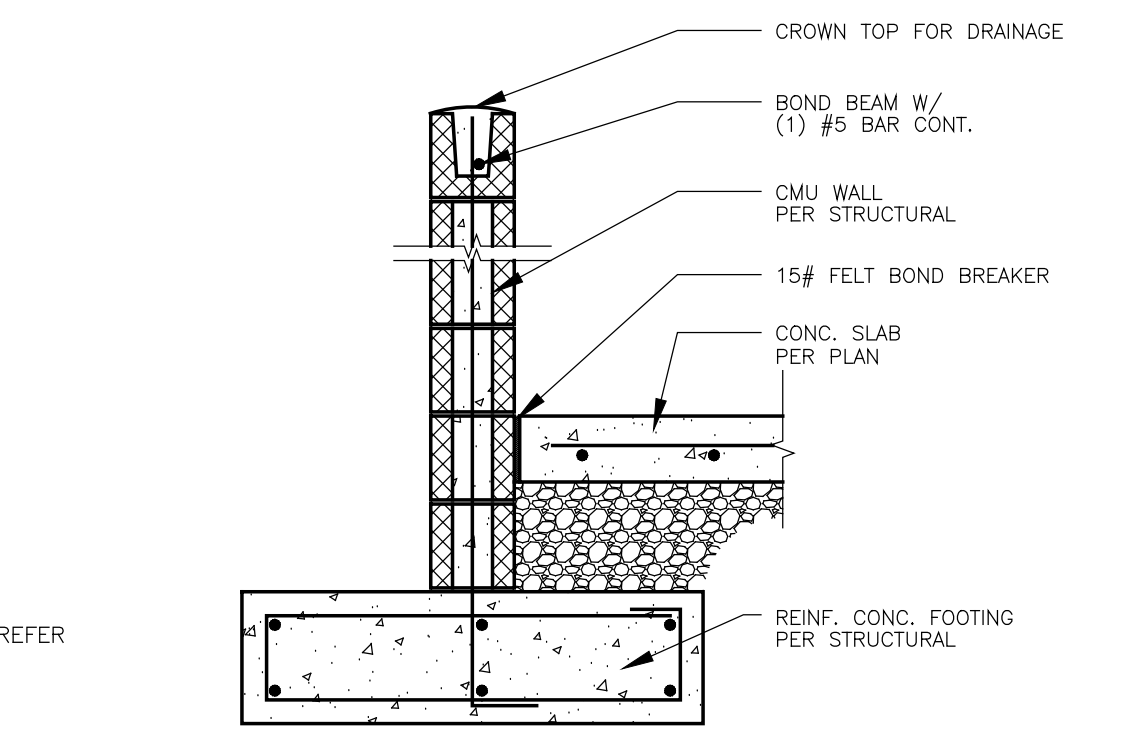
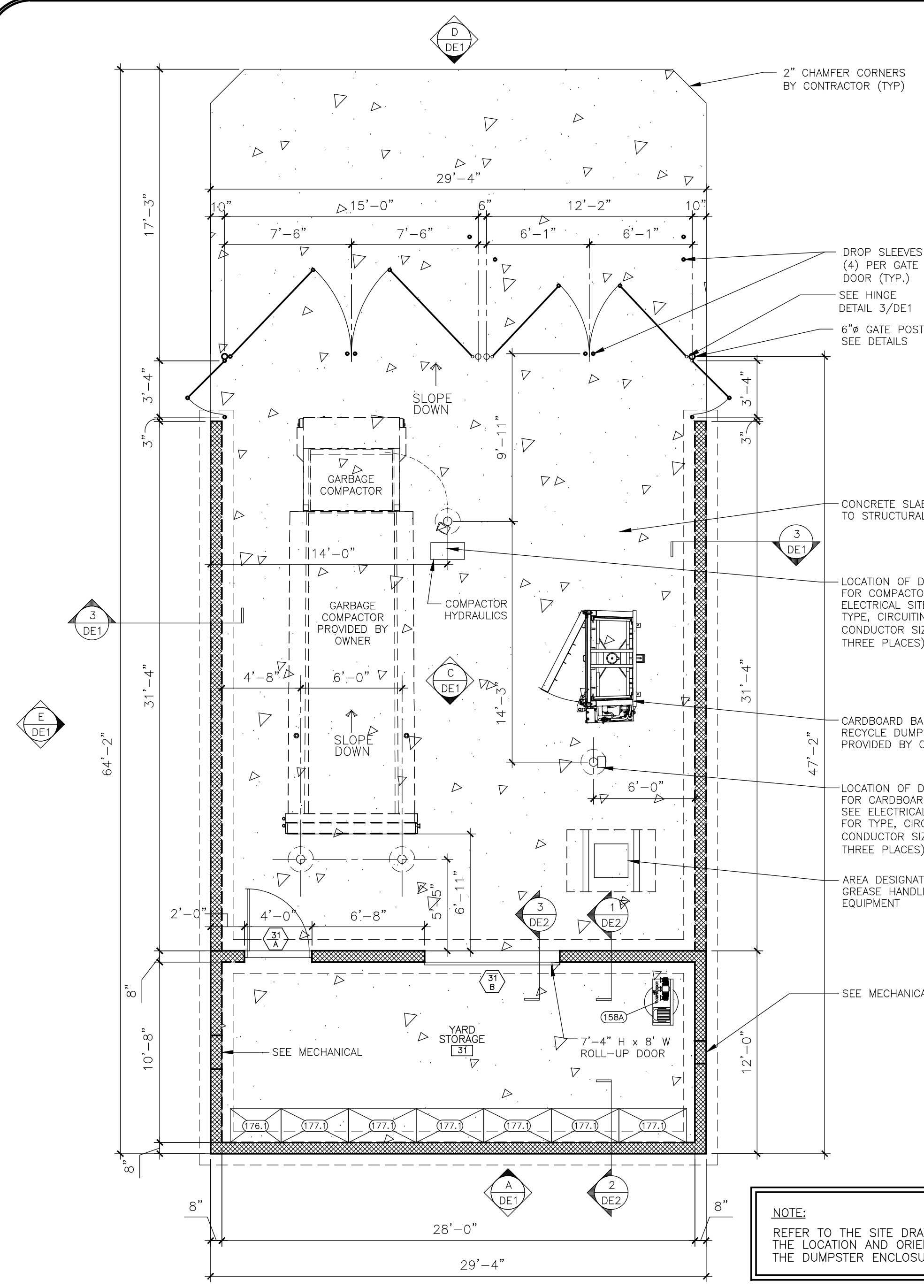
DATE:	REV.	DESCRIPTION:
02/14/20	1	PROJECT: 222-05

DATE: 02/14/20 DRAWN BY: MMB PROJECT: 222-05
 REVISION DESCRIPTION:

THIS DRAWING IS CONFIDENTIAL
 NO USE OR DISCLOSURE OF THIS DRAWING
 IS PERMITTED EXCEPT AS EXPRESSLY
 AUTHORIZED BY PILOT FLYING J

SHEET:
DE1

TRAVEL CENTER EQUIPMENT SCHEDULE						
MARK	Qty	DESCRIPTION	MANUFACTURER	MODEL NUMBER	REMARKS	
158A	1	AIR COMPRESSOR	CHAMPION	VRS-8	PROVIDED BY PILOT, INSTALLED BY G.C. (SEE SHEET DE1)	ELECTRIC
176.1	1	24" X 36" DRY STORAGE SHELVING	ADVANCED TABCO	EG-2438	W/74" TALL POSTS AND 4 SHELVES (TYPICAL)	GAS
177.1	6	24" X 48" DRY STORAGE SHELVING	ADVANCED TABCO	EG-2448	W/74" TALL POSTS AND 4 SHELVES (TYPICAL)	WATER REQUIRES WATER



1 DUMPSTER ENCLOSURE PLAN
 SCALE: 3/16" = 1'-0"

2 BOLLARD DETAIL
 SCALE: N.T.S.

3 HEAVY DUTY GATE / HINGE DETAIL
 SCALE: N.T.S.

4 GATE FRAMING (REAR VIEW)
 SCALE: N.T.S.