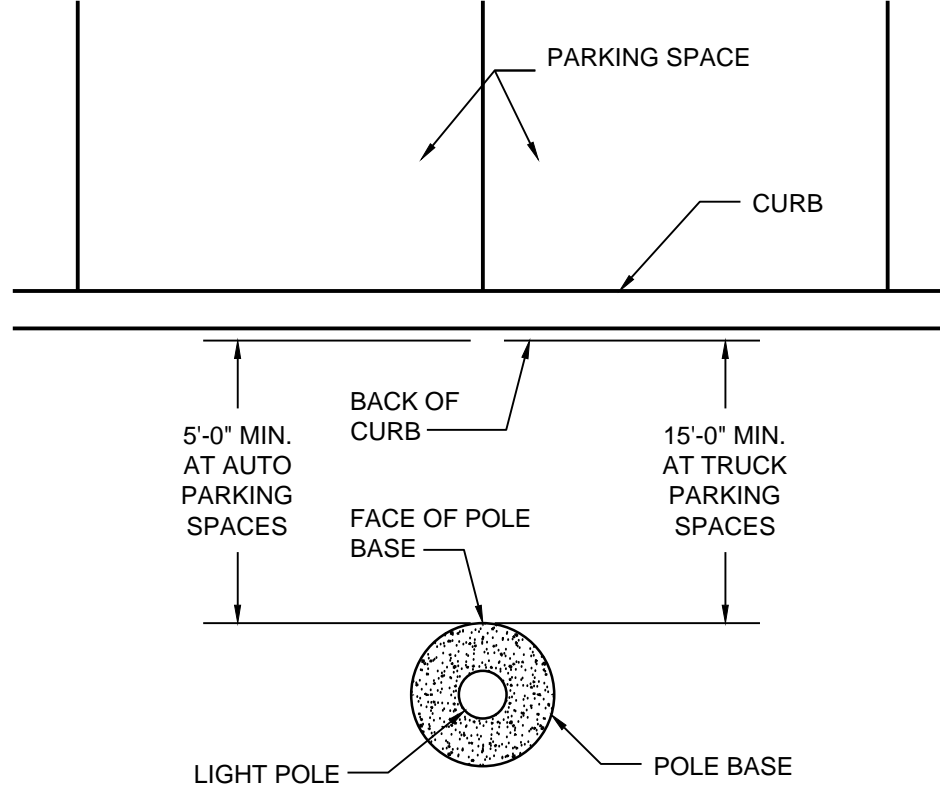


**SITE LIGHTING FIXTURE SCHEDULE**

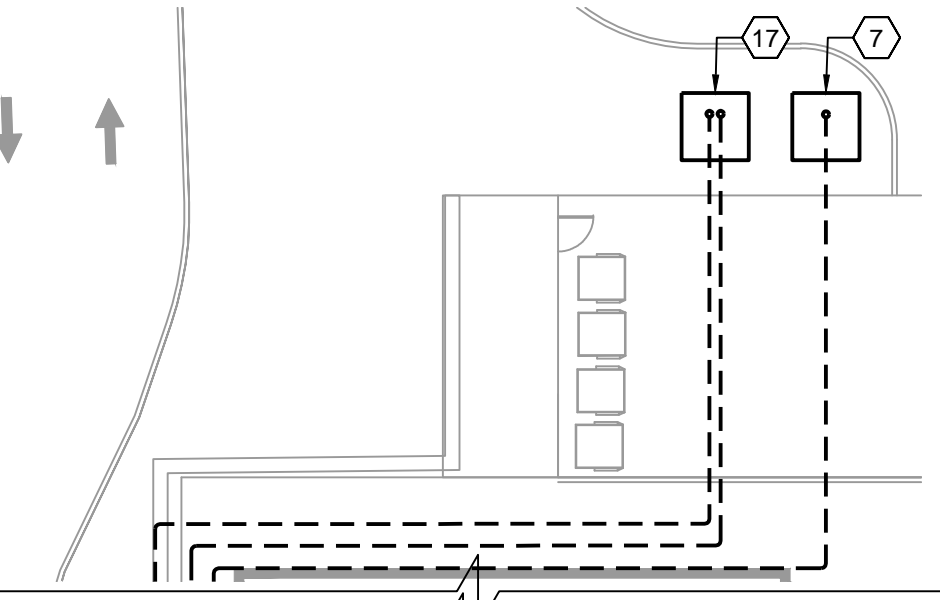
NOT ALL FIXTURES SHOWN ON SCHEDULE MAY BE UTILIZED ON PLAN

SYMBOL	TYPE	QUANTITY	DESCRIPTION	LUMINAIRE MODEL #	MANUF.	LAMP TYPE	LENS TYPE	VOLTAGE	TILT ANGLE	POLE HEIGHT	POLE BASE HEIGHT	FIXTURE MOUNTING HEIGHT
SA	SA	2	(1) 215W LED SHOEBOX LUMINAIRE	OSQ-A-DA-4ME-U-57K-UL-BZ	CREE	LED	N/A	277	0°	20'-0"	3'-6"	23'-6"
SB	SB	12	(1) 215W LED SHOEBOX LUMINAIRE	OSQ-A-DA-4ME-U-57K-UL-BZ	CREE	LED	N/A	277	0°	20'-0"	3'-6"	23'-6"
SB1	SB1	12	(1) 215W LED SHOEBOX LUMINAIRE	OSQ-A-DA-4ME-U-57K-UL-BZ	CREE	LED	N/A	277	0°	30'-0"	3'-6"	33'-6"
SB2	SB2	14	(1) 215W LED SHOEBOX LUMINAIRE	OSQ-A-DA-4ME-U-57K-UL-BZ	CREE	LED	N/A	277	0°	30'-0"	3'-6"	33'-6"
SB4	SB4	2	(1) 215W LED SHOEBOX LUMINAIRE	OSQ-A-DA-4ME-U-57K-UL-BZ	CREE	LED	N/A	277	0°	30'-0"	3'-6"	33'-6"
SBC	SBC	10	(1) 215W LED SHOEBOX LUMINAIRE	OSQ-A-DA-4ME-U-57K-UL-BZ	CREE	LED	N/A	277	0°	-	-	20'-0"
UC	UC	48	(1) 85W LED CANOPY LUMINAIRE	CPY250-B-DM-F-F-UL-WH-57K	CREE	LED	N/A	277	N/A	N/A	N/A	N/A

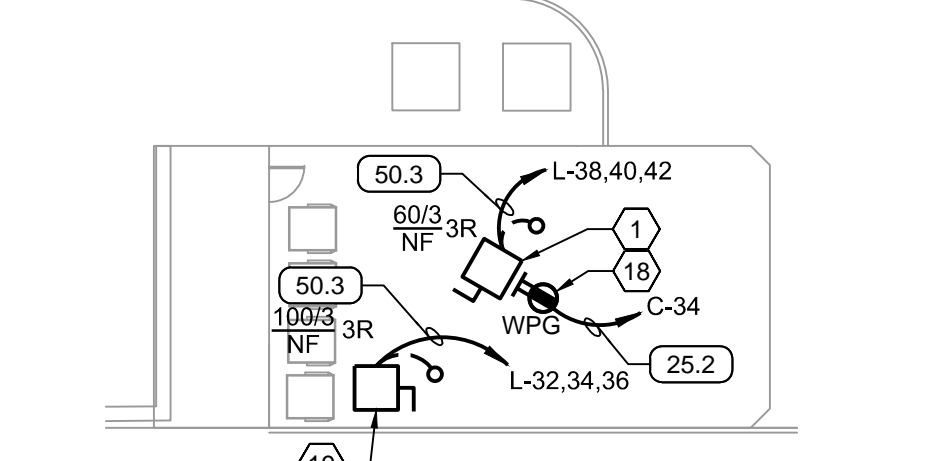
NOTE:  
DISTANCE REQUIREMENTS FOR POLE BASE TO BACK OF CURB ONLY PERTAINS TO POLE LOCATIONS DIRECTLY IN LINE WITH PULL-IN / BACK-IN PARKING SPOTS.



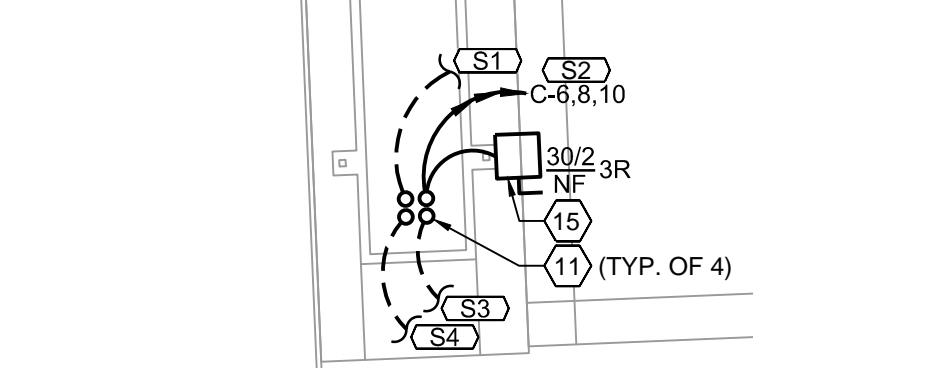
**5 SITE LIGHT POLE BASE DETAIL**  
SCALE: N.T.S.



**4 ELECTRICAL DISTRIBUTION**  
SCALE: 1"=20'-0"

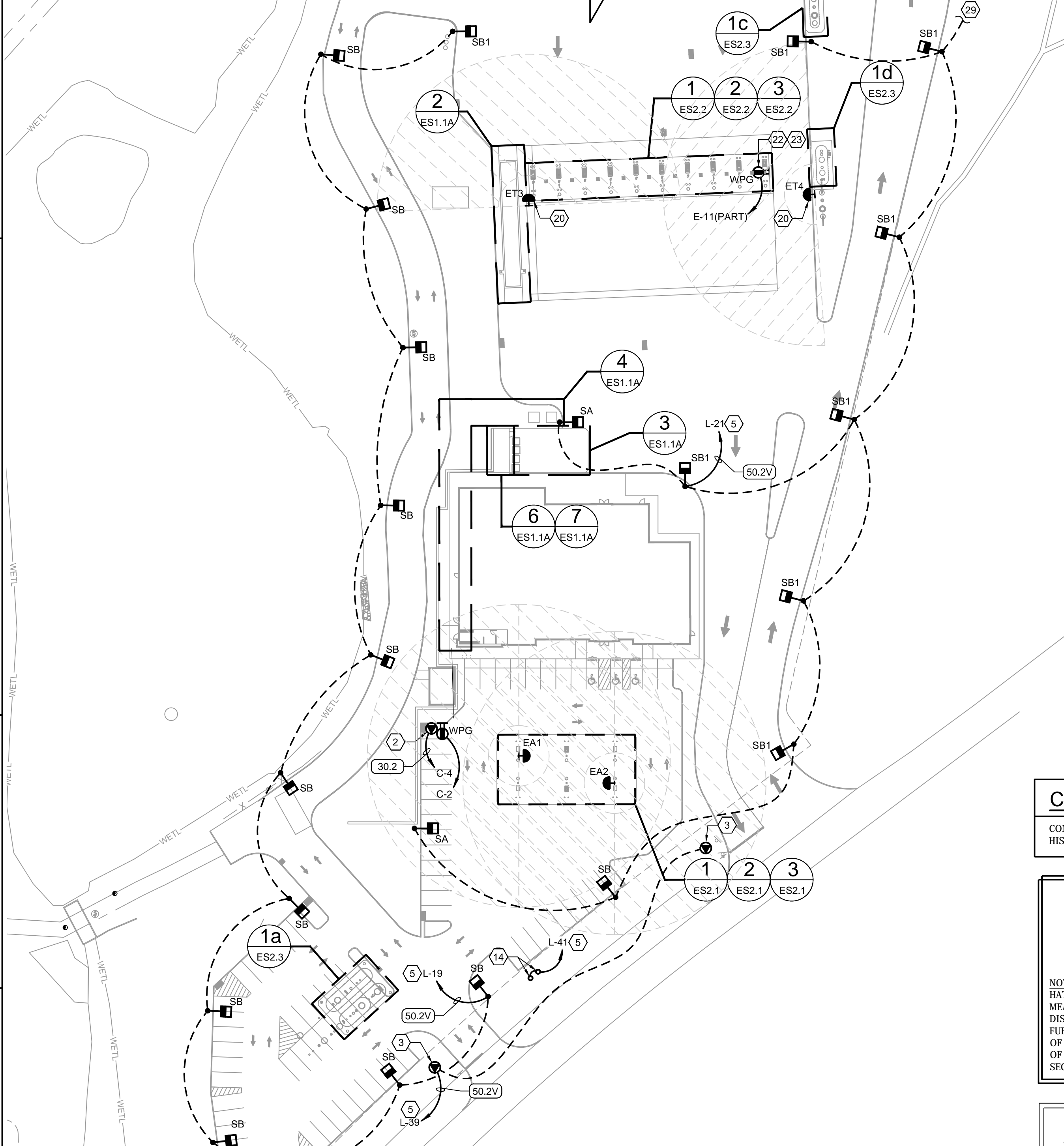


**3 DUMPSTER ENCLOSURE - ELECTRICAL**  
SCALE: 1"=20'-0"

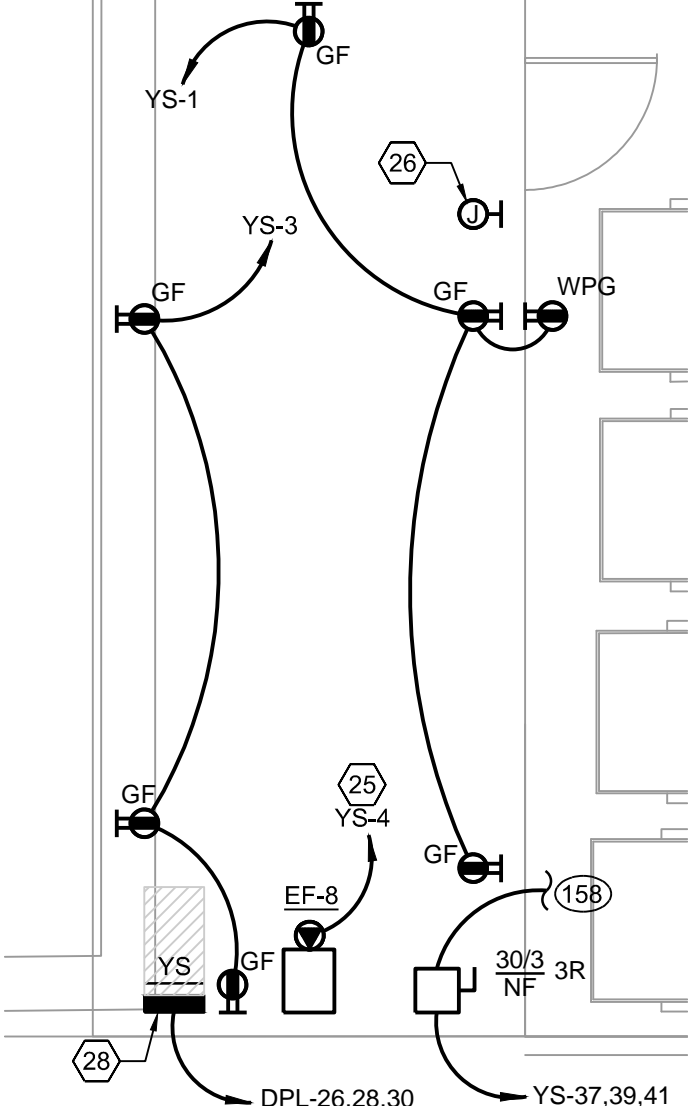


**2 CAT SCALE PLAN - ELECTRICAL**  
SCALE: 1"=20'-0"

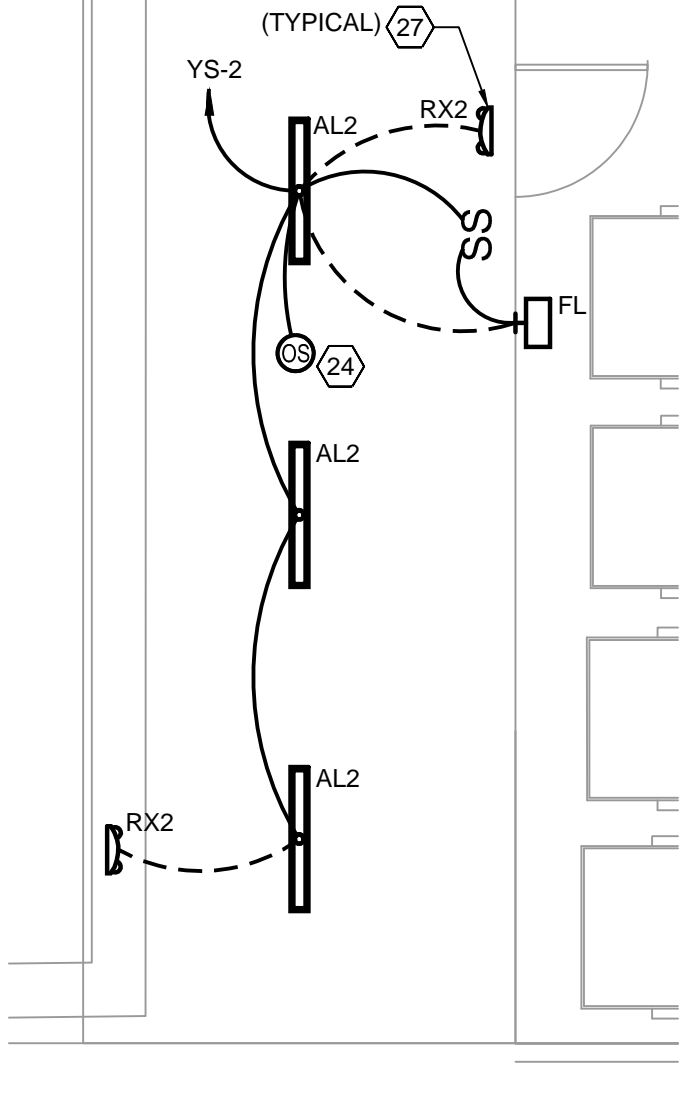
MATCHLINE: SEE SHEET ES1.1B



**1 SITE PLAN - ELECTRICAL**  
SCALE: 1"=50'-0"



**YARD STORAGE - ELECTRICAL**  
SCALE: 3/16" = 1'-0"



**YARD STORAGE - LIGHTING**  
SCALE: 3/16" = 1'-0"

**CONTRACTOR NOTE**

CONTRACTOR SHALL VISIT SITE AND FAMILIARIZE HIS/HERSELF WITH THE EXISTING CONDITIONS.

NOTE:  
HATCHED AREA DESIGNATION SHOWN ON PLAN IS MEANT TO REPRESENT THE MINIMUM AND MAXIMUM DISTANCES FOR THE EMERGENCY SHUT-OFF FOR THE FUEL DISPENSERS. THE HATCH SHOWS A MINIMUM OF 20' TO THE CLOSEST DISPENSER AND A MAXIMUM OF 100' TO THE FURTHEST DISPENSER PER NFPA SECTION 30A CHAPTER 6.7 REQUIREMENTS.

CONDUIT TAG - REFER TO TRAVEL CENTER CONDUIT SCHEDULE SHEET ES.4 FOR ALL CONDUIT REQUIREMENTS INCLUDING SIZE, QUANTITY AND FILL.

**GENERAL ELECTRICAL NOTES**

- SITE ELECTRICAL CONTRACTOR TO COORDINATE LOCATION OF EASEMENTS, UNDERGROUND UTILITIES & DRAINAGE BEFORE DRILLING POLE BASES. (TYPICAL)
- THE INSTALLATION OF THE SITE LIGHTING SHALL COMPLY WITH THE APPLICABLE EDITION OF THE NATIONAL ELECTRICAL CODE AND SHALL COMPLY WITH ALL OTHER STATE AND LOCAL CODES.
- THE WIND-LOAD STRENGTH OF TOTAL POLE/SUPPORT ASSEMBLY SHALL BE ADEQUATE TO CARRY THE COMPLETE SUPPORT ASSEMBLY AND LUMINAIRE WITHOUT FAILURE, PERMANENT DEFLECTION, OR WHIPPING IN STEADY WINDS OF 80 MPH WITH A GUST FACTOR OF 1.3.
- LIGHT POLE BASES SHALL BE LOCATED 5'-0" BEHIND CURB IN AUTO PARKING AREAS, AND 15'-0" BEHIND CURB IN TRUCK PARKING AREAS. BASES SHALL BE IN-LINE WITH STRIPES BETWEEN PARKING SPACES.
- REFER TO SITE PHOTOMETRIC PLAN FOR FIXTURE ORIENTATION. FLOOD LIGHTS MOUNTED ON HIGH MAST POLE SHOULD BE AIMED FOR BEST RESULTS.
- SYMBOLS ON THIS DRAWING HAVE BEEN ENLARGED FOR LEGIBILITY THESE SYMBOLS ARE NOT TO SCALE.

**KEYED NOTES**

- CONNECT TO TRASH COMPACTOR.
- CONNECT TO VACUUM STATION.
- CONNECT TO DIRECTIONAL SIGNAGE. COORDINATE LOCATION WITH CIVIL AND SIGNAGE DRAWINGS.
- NOT USED.
- CONNECT THROUGH LIGHTING CONTACTORS. LIGHTING CONTACTORS ARE CONTROLLED BY THE COMBINATION OF A PHOTOSENSOR AND ASTRONOMICAL TIMECLOCK VIA THE ENERGY MANAGEMENT CONTROLLER.
- NOT USED.
- UTILITY COMPANY TRANSFORMER. COORDINATE EXACT LOCATION WITH UTILITY COMPANY.
- PROPOSED METERING EQUIPMENT LOCATION. COORDINATE WITH UTILITY COMPANY PRIOR TO ANY ROUGH-IN. REFER TO SHEET E6 FOR MORE INFORMATION.
- NOT USED.
- NOT USED.
- STUB CONDUITS INTO TRUCK SCALE PIT.
- NOT USED.
- NOT USED.
- PROVIDE GROUND MOUNTED, LED UP LIGHTS TO ILLUMINATE FACE OF SIGN. LIGHTS SHALL BE LISTED FOR WET LOCATION USE.
- CONNECT TO CAT SCALES SIGN.
- NOT USED.
- DRY TYPE DISTRIBUTION TRANSFORMER DT-1 FOR OWNER. PROVIDE 6" THICK CONCRETE PAD WITH 6" REVEAL ON ALL SIDES. COORDINATE EXACT LOCATION WITH UTILITY COMPANY AND CIVIL ENGINEERS DRAWINGS. COORDINATE PAD SIZE AND LAYOUT WITH UTILITY COMPANY.
- PROVIDE CONNECTION FOR GOLF CART RECHARGER.
- PROVIDE CONNECTION FOR CARDBOARD BALER.
- MOUNT FUELING E-STOP ON 6" STEEL PIPE BOLLARD (BOLLARD PROVIDED BY OTHERS). COORDINATE CONDUIT STUB UP LOCATION WITH SITE CONTRACTOR.
- PROVIDE 1" CONDUIT FROM CONTROL PANEL FOR MUFFIN MONSTER/LIFT STATION TO EMPLOYEE BREAKROOM FOR REMOTE ALARM CONNECTIONS. COORDINATE CONDUIT REQUIREMENTS FOR ALARM STATIONS WITH MANUFACTURER AND PROVIDE. CONFIRM EXACT LOCATION IN FIELD PRIOR TO COMMENCING ROUGH-IN.
- PROVIDE POWER FOR TRUCK PARKING AREA WIFI. COORDINATE EXACT MOUNTING LOCATION WITH PROJECT MANAGER FOR POLE MOUNTS, SEE DETAIL 2-ES1.2.
- RECEPTACLE SHALL BE MOUNTED ON TOP OF FUELING CANOPY. COORDINATE LOCATION WITH PROJECT MANAGER.
- OCCUPANCY SENSOR SHALL BE WATTSTOPPER MODEL #CB100. PROVIDE WITH ALL NECESSARY POWER PACKS (HUBBELL MODEL #UVPP), TRANSFORMERS AND MOUNTING HARDWARE.
- FAN SHALL BE CONTROLLED VIA THERMOSTAT.
- PROVIDE SINGLE GANG JUNCTION BOX FOR THERMOSTAT. COORDINATE EXACT LOCATION W/ MECHANICAL CONTRACTOR. PROVIDE 3/4" CONDUIT ROUTED TO JOIST LEVEL. PROVIDE NYLON BUSHINGS AND 200 LB PULLSTRING.
- CONNECT ALL EMERGENCY BATTERIES, EGRESS, AND EXIT FIXTURES AHEAD OF ALL LOCAL SWITCHING.
- NEW ELECTRICAL DISTRIBUTION PANEL. SEE SHEET ES.1B AND E6 SERIES FOR MORE INFORMATION.
- SEE SHEET ES.1B FOR CONTINUATION OF SITE LIGHTING CIRCUIT L-21.

**CONDUIT AND CONDUCTOR SCHEDULE**

FEEDER	DESCRIPTION
1240.4S	4 SETS - (4)#350 KCMIL, (1)#3/0 G., EACH SET IN 3-1/2" C.
25.2	(2)#12, (1)#12 G., IN 1" C.
30.2	(2)#10, (1)#10 G., IN 1/2" C.
35.2	(2)#10, (1)#10 G., IN 1" C.
50.2V	(2)#8, (1)#10 G., IN 1" C.
50.3	(3)#8, (1)#10 G., IN 1" C.
65.2V	(2)#6, (1)#8 G., IN 1" C.
840.3	2 SETS - (3)#600 KCMIL, (1)#1/0 G., EACH SET IN 3-1/2" C.
840.4	2 SETS - (4)#600 KCMIL, (1)#1/0 G., EACH SET IN 4" C.
840.4U	2 SETS - (4)#600 KCMIL, EACH SET IN 3-1/2" C.
85.2V	(2)#4, (1)#8 G., IN 1" C.

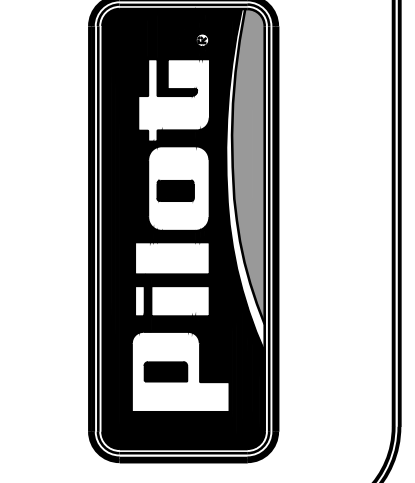
**CONDUIT AND CONDUCTOR SCHEDULE NOTES:**

- I - ISOLATED VOLTAGE
- V - SIZED FOR VOLTAGE DROP
- S - SEPARATELY DERIVED SYSTEM
- U - SERVICE FROM UTILITY

**PAGE**  
**INTERWORKS, P.A.**  
ENGINEERS & CONSULTANTS  
923 MAIN STREET, NORTH WILKESBORO, NC 28659  
PHONE: 336-647-4225 FAX: 336-647-4332



**PILOT FLYING J**  
DESIGN DEPARTMENT  
5508 LONAS ROAD  
KNOXVILLE, TENNESSEE 37909  
(865) 688-7488



**SITE PLAN ELECTRICAL**  
**PILOT TRAVEL CENTER**  
400 ROUTE 15 (HAYNES STREET)  
STURBRIDGE, MA 01566

DATE:	REV:	DESCRIPTION:
02/14/20	1	DRAWN BY: MMB   PROJECT: 222-05
	2	DESIGNED BY: JWB   DATE: 10/23
	3	REVISION DESCRIPTION:

SHEET:  
**ES1.1A**

**SITE LIGHTING FIXTURE SCHEDULE**

NOT ALL FIXTURES SHOWN ON SCHEDULE MAY BE UTILIZED ON PLAN

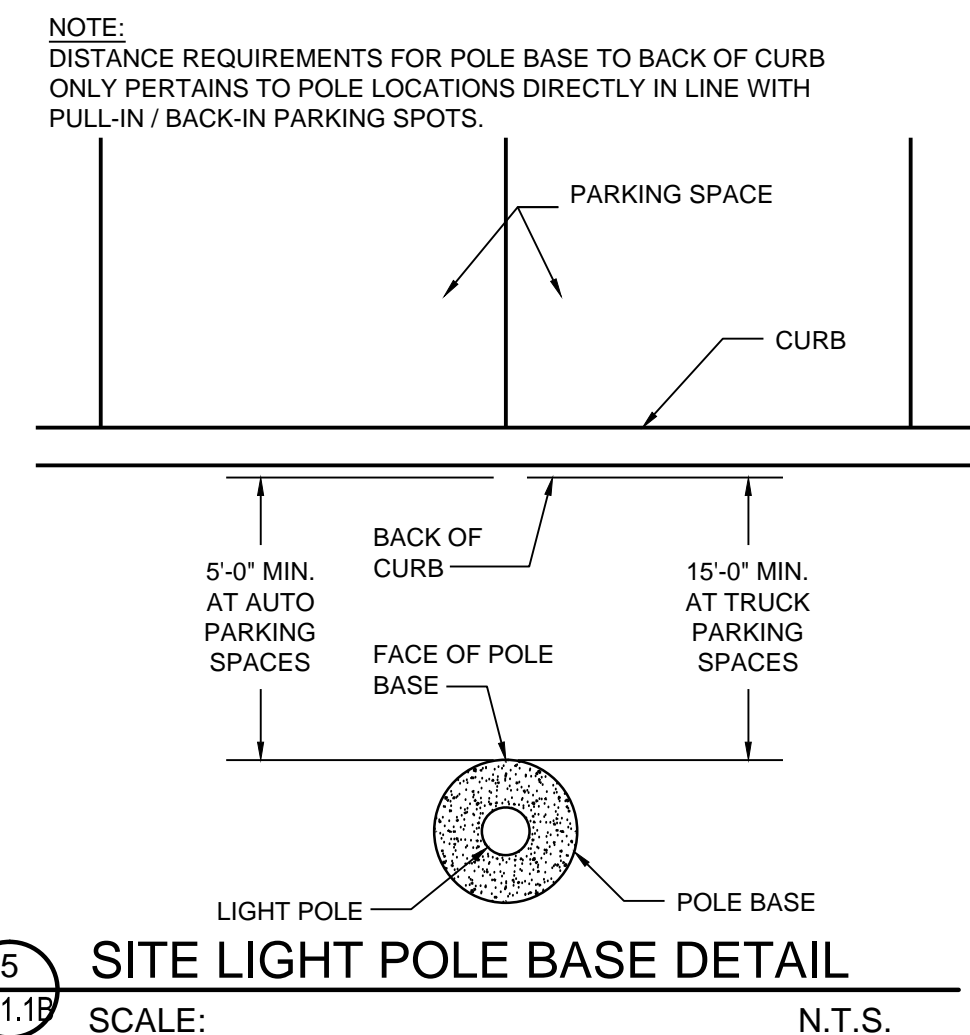
SYMBOL	TYPE	QUANTITY	DESCRIPTION	LUMINAIRE MODEL #	MANUF.	LAMP TYPE	LENS TYPE	VOLTAGE	TILT ANGLE	POLE HEIGHT	POLE BASE HEIGHT	FIXTURE MOUNTING HEIGHT
	SA	2	(1) 215W LED SHOEBOX LUMINAIRE	OSQ-A-DA-4ME-U-57K-UL-BZ	CREE	LED	N/A	277	0°	20'-0"	3'-6"	23'-6"
	SB	12	(1) 215W LED SHOEBOX LUMINAIRE	OSQ-A-DA-4ME-U-57K-UL-BZ	CREE	LED	N/A	277	0°	20'-0"	3'-6"	23'-6"
	SB1	12	(1) 215W LED SHOEBOX LUMINAIRE	OSQ-A-DA-4ME-U-57K-UL-BZ	CREE	LED	N/A	277	0°	30'-0"	3'-6"	33'-6"
	SB2	14	(1) 215W LED SHOEBOX LUMINAIRE	OSQ-A-DA-4ME-U-57K-UL-BZ	CREE	LED	N/A	277	0°	30'-0"	3'-6"	33'-6"
	SB4	2	(1) 215W LED SHOEBOX LUMINAIRE	OSQ-A-DA-4ME-U-57K-UL-BZ	CREE	LED	N/A	277	0°	30'-0"	3'-6"	33'-6"
	SBC	10	(1) 215W LED SHOEBOX LUMINAIRE	OSQ-A-DA-4ME-U-57K-UL-BZ	CREE	LED	N/A	277	0°	-	-	20'-0"
	UC	48	(1) 85W LED CANOPY LUMINAIRE	CPY250-B-DM-F-F-UL-WH-57K	CREE	LED	N/A	277	N/A	N/A	N/A	N/A

**GENERAL ELECTRICAL NOTES**

- SITE ELECTRICAL CONTRACTOR TO COORDINATE LOCATION OF EASEMENTS, UNDERGROUND UTILITIES & DRAINAGE BEFORE DRILLING POLE BASES. (TYPICAL)
- THE INSTALLATION OF THE SITE LIGHTING SHALL COMPLY WITH THE APPLICABLE EDITION OF THE NATIONAL ELECTRICAL CODE AND SHALL COMPLY WITH ALL OTHER STATE AND LOCAL CODES.
- THE WIND-LOAD STRENGTH OF TOTAL POLE/SUPPORT ASSEMBLY SHALL BE ADEQUATE TO CARRY THE COMPLETE SUPPORT ASSEMBLY AND LUMINAIRES WITHOUT FAILURE, PERMANENT DEFLECTION, OR WHIPPING IN STEADY WINDS OF 80 MPH WITH A GUST FACTOR OF 1.3.
- LIGHT POLE BASES SHALL BE LOCATED 5'-0" BEHIND CURB IN AUTO PARKING AREAS, AND 15'-0" BEHIND CURB IN TRUCK PARKING AREAS. BASES SHALL BE IN-LINE WITH STRIPES BETWEEN PARKING SPACES.
- REFER TO SITE PHOTOMETRIC PLAN FOR FIXTURE ORIENTATION. FLOOD LIGHTS MOUNTED ON HIGH MAST POLE SHOULD BE AIMED FOR BEST RESULTS.
- SYMBOLS ON THIS DRAWING HAVE BEEN ENLARGED FOR LEGIBILITY THESE SYMBOLS ARE NOT TO SCALE.

**KEYED NOTES**

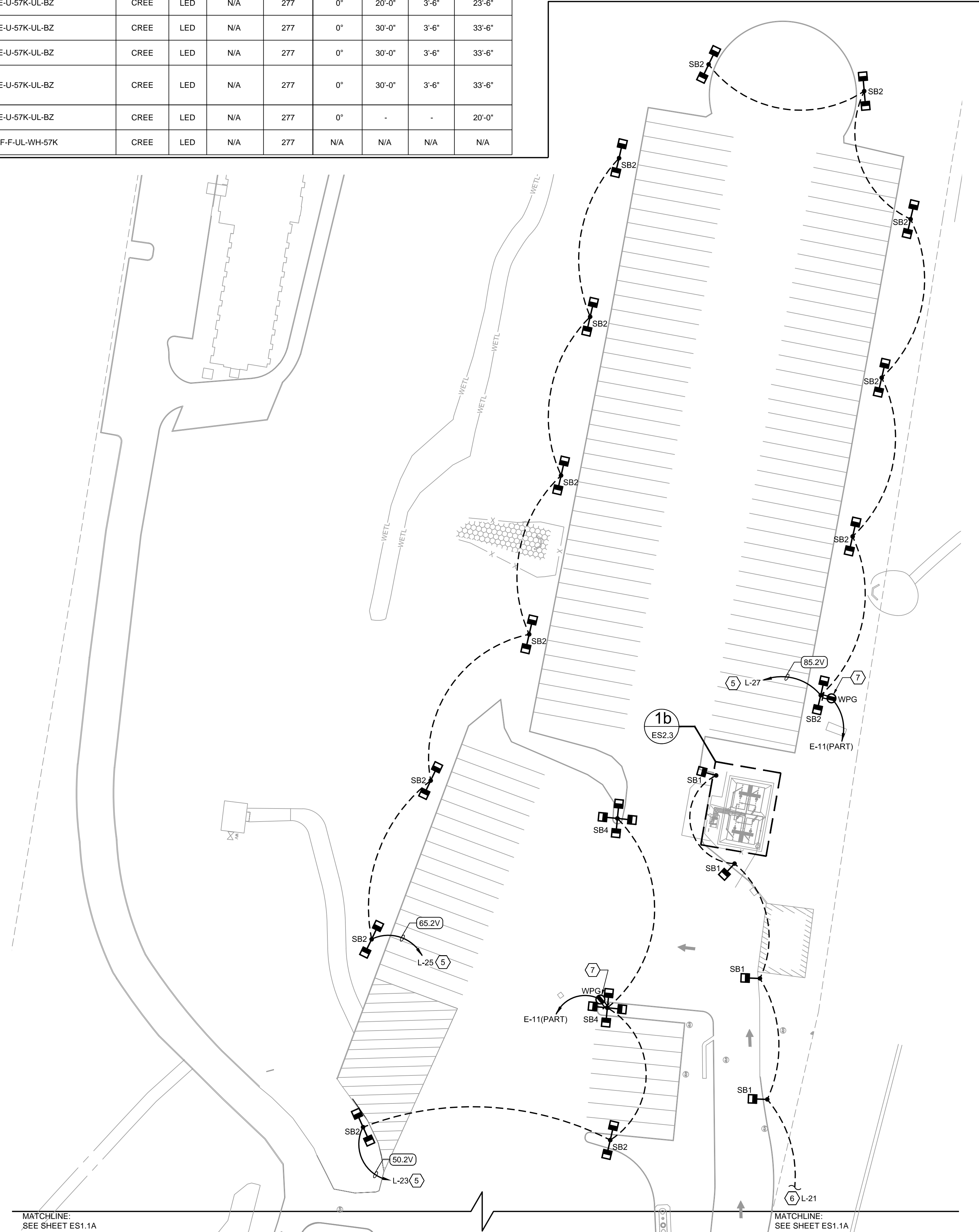
- NOT USED.
- NOT USED.
- CONNECT TO DIRECTIONAL SIGNAGE. COORDINATE LOCATION WITH CIVIL AND SIGNAGE DRAWINGS.
- NOT USED.
- CONNECT THROUGH LIGHTING CONTACTORS. LIGHTING CONTACTORS ARE CONTROLLED BY THE COMBINATION OF A PHOTOSENSOR AND ASTRONOMICAL TIMECLOCK VIA THE ENERGY MANAGEMENT CONTROLLER.
- SEE SHEET ES1.1A FOR CONTINUATION OF SITE LIGHTING CIRCUIT 'L-21'.
- PROVIDE POWER FOR TRUCK PARKING AREA WIFI. COORDINATE EXACT MOUNTING LOCATION WITH PROJECT MANAGER FOR POLE MOUNTS, SEE DETAIL 2-ES1.2.



**CONTRACTOR NOTE**

CONTRACTOR SHALL VISIT SITE AND FAMILIARIZE HIS/HERSELF WITH THE EXISTING CONDITIONS.

CONDUIT TAG - REFER TO TRAVEL CENTER CONDUIT SCHEDULE SHEET ES.4 FOR ALL CONDUIT REQUIREMENTS INCLUDING SIZE, QUANTITY AND FILL.



**1 SITE PLAN - ELECTRICAL**  
SCALE: 1"=50'-0"

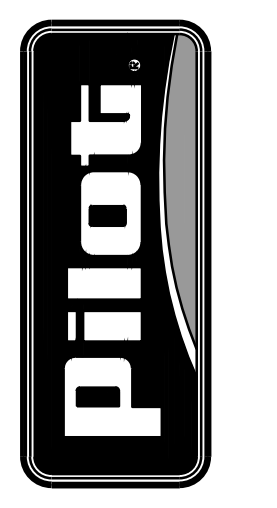
**CONDUIT AND CONDUCTOR SCHEDULE**

FEEDER	DESCRIPTION
1240.4S	4 SETS - (4)#350 KCMIL, (1)#3/0 G., EACH SET IN 3-1/2" C.
25.2	(2)#12, (1)#12 G., IN 1" C.
30.2	(2)#10, (1)#10 G., IN 1/2" C.
50.2V	(2)#8, (1)#10 G., IN 1" C.
50.3	(3)#8, (1)#10 G., IN 1" C.
65.2V	(2)#6, (1)#8 G., IN 1" C.
840.3	2 SETS - (3)#600 KCMIL, (1)#1/0 G., EACH SET IN 3-1/2" C.
840.4	2 SETS - (4)#600 KCMIL, (1)#1/0 G., EACH SET IN 4" C.
840.4U	2 SETS - (4)#600 KCMIL, EACH SET IN 3-1/2" C.
85.2V	(2)#4, (1)#8 G., IN 1" C.

CONDUIT AND CONDUCTOR SCHEDULE NOTES:  
I - ISOLATED GROUND  
V - SIZED FOR VOLTAGE DROP  
S - SEPARATELY DERIVED SYSTEM  
U - SERVICE FROM UTILITY



**PILOT FLYING J**  
DESIGN DEPARTMENT  
5808 LONAS ROAD  
KNOXVILLE, TENNESSEE 37909  
(865) 688-7488



**SITE PLAN ELECTRICAL**  
**PILOT TRAVEL CENTER**  
400 ROUTE 15 (HAYNES STREET)  
STURBRIDGE, MA 01566

DATE	REV.	DESCRIPTION
02/14/20	1	DRAWN BY: MMB   PROJECT: 222-05 DESIGN BY: MMB   SCALE: 1/8"=1'-0" REVISION DESCRIPTION:

© COPYRIGHT 2020 COMPILERS  
PILOT FLYING J  
CONFIDENTIAL  
NO USE OR DISCLOSURE OF THIS DRAWING  
IS PERMITTED WITHOUT EXPRESSLY  
AUTHORIZED BY PILOT FLYING J

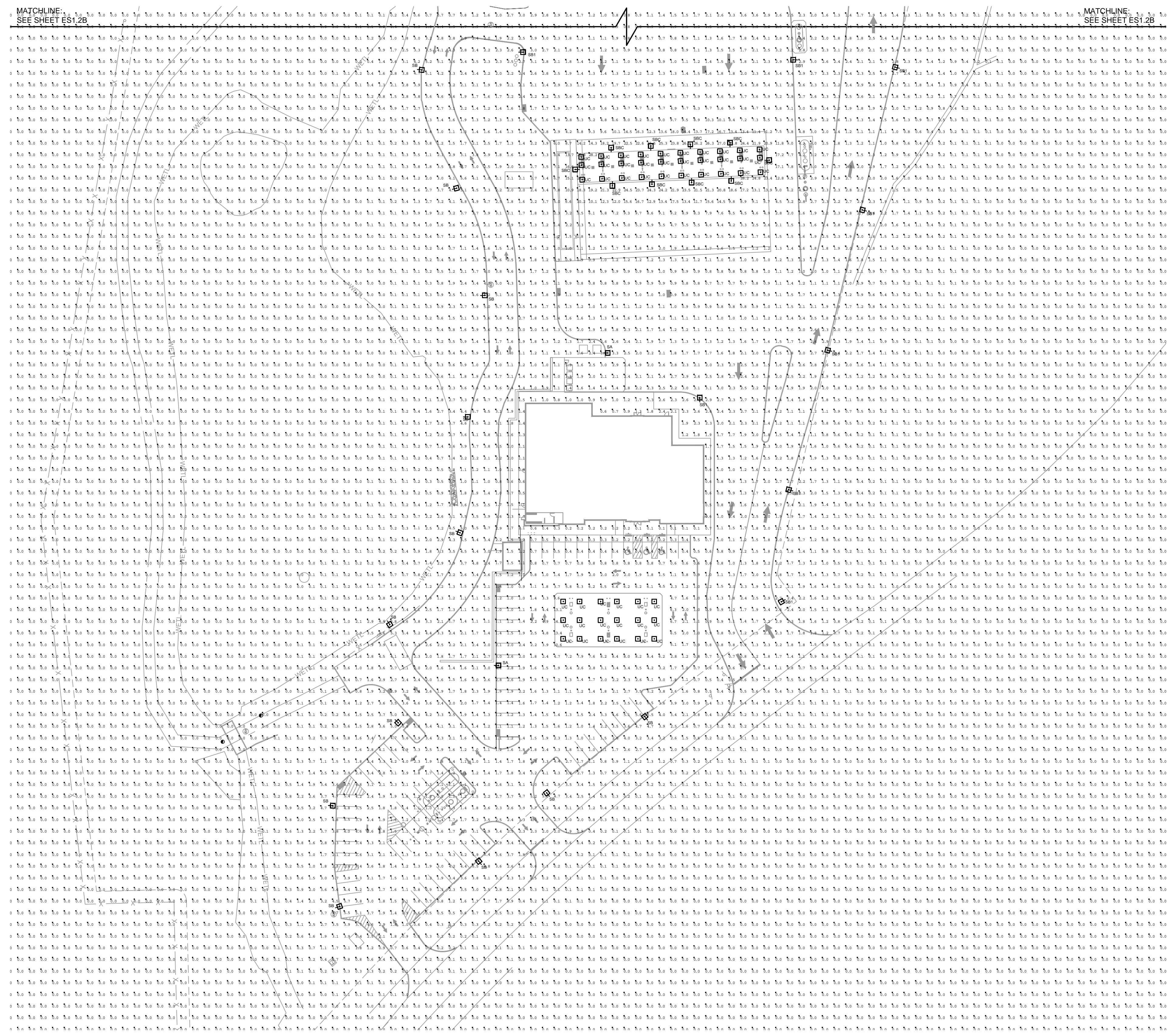
**PAGE**  
**INTERWORKS, P.A.**  
ENGINEERS & CONSULTANTS  
923 MAIN STREET, NORTH WILKESBORO, NC 28659  
PHONE: 336-647-4225 FAX: 336-647-4332

SHEET:  
**ES1.1B**



Symbol	Qty	Label	Arrangement	Total Lamp Lumens	LLF	Description
	48	UC	SINGLE	N.A.	0.810	CPY250-A-xx-F-A-UL or BXCCAxA08-Ux
	2	SA	SINGLE	N.A.	0.810	OSQ-A-xx-5ME-U-57K-ULxxxxx CONFIGURED FROM OSQ-A-xx-5ME-U-30K-ULxxxxx
	12	SB	SINGLE	N.A.	0.810	OSQ-A-xx-4ME-U-57K-ULxxxxx CONFIGURED FROM OSQ-A-xx-4ME-U-40K-ULxxxxx
	14	SB2	ROTATED	N.A.	0.810	OSQ-A-xx-4ME-U-57K-ULxxxxx CONFIGURED FROM OSQ-A-xx-4ME-U-40K-ULxxxxx
	12	SB1	SINGLE	N.A.	0.810	OSQ-A-xx-4ME-U-57K-ULxxxxx CONFIGURED FROM OSQ-A-xx-4ME-U-40K-ULxxxxx
	10	SBC	SINGLE	N.A.	0.810	OSQ-A-xx-4ME-U-57K-ULxxxxx CONFIGURED FROM OSQ-A-xx-4ME-U-40K-ULxxxxx
	2	SB4	4 @ 90 DEGREES	N.A.	0.810	OSQ-A-xx-4ME-U-57K-ULxxxxx CONFIGURED FROM OSQ-A-xx-4ME-U-40K-ULxxxxx

Calculation Summary		CalcType	Units	Avg	Max	Min	Avg/Min	Max/Min
Label		illuminance	Fc	0.62	31.1	0.0	N.A.	N.A.
CalcPts_1								



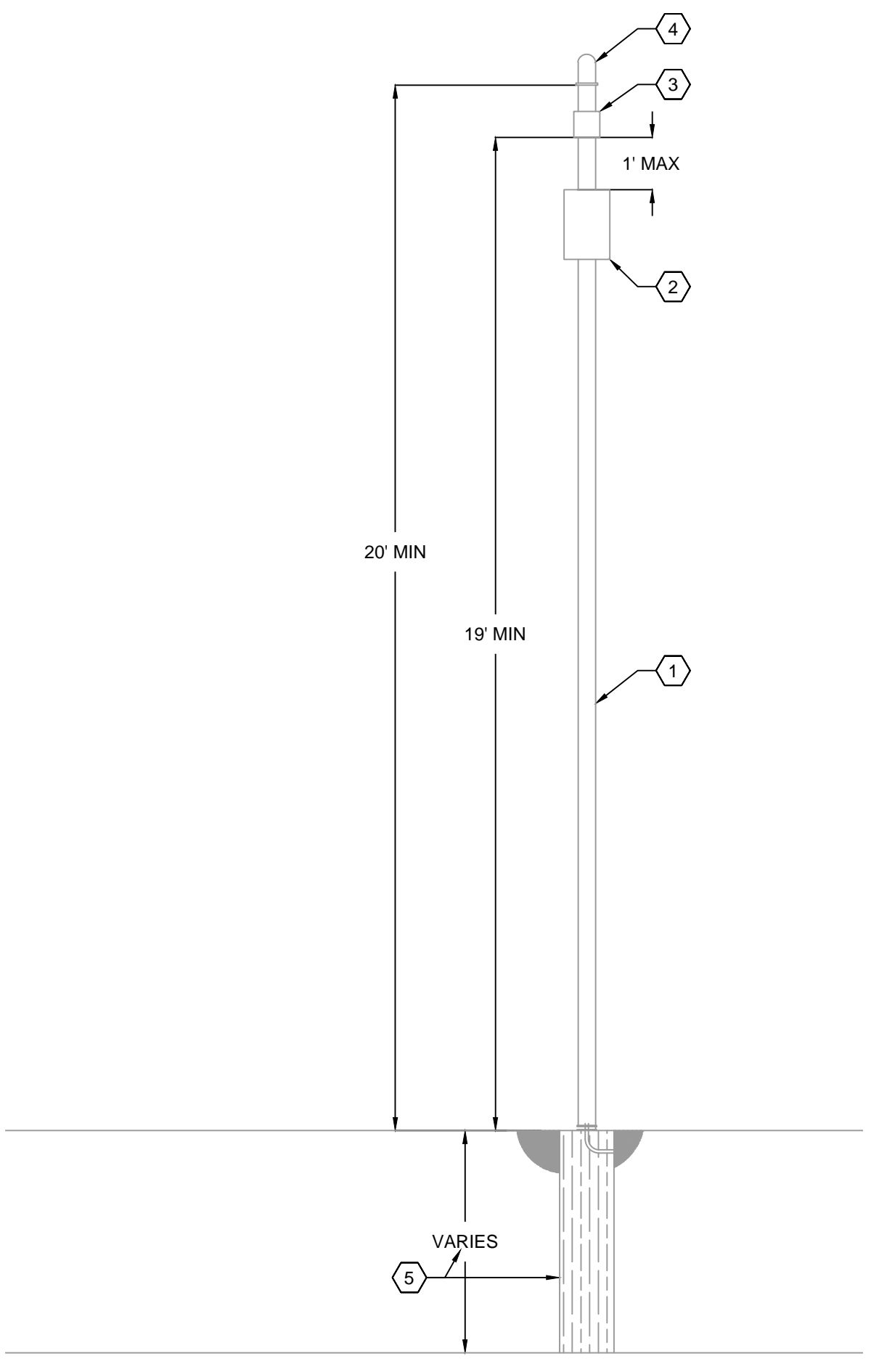
**1** SITE PLAN - ELECTRICAL  
SCALE: 1"=50'-0"

**CONTRACTOR NOTE**

- THIS LIGHTING DESIGN IS BASED ON INFORMATION SUPPLIED BY OTHERS TO PAGE INTERWORKS, P.A. SITE DETAILS PROVIDED HEREON ARE REPRODUCED ONLY AS A VISUALIZATION AID. FIELD DEVIATIONS MAY SIGNIFICANTLY AFFECT PREDICTED PERFORMANCE. PRIOR TO INSTALLATION, CRITICAL SITE INFORMATION (POLE LOCATIONS, ORIENTATION, MOUNTING HEIGHT, ETC.) SHOULD BE COORDINATED WITH THE CONTRACTOR AND/OR SPECIFIER RESPONSIBLE FOR THE PROJECT.
- LUMINAIRE DATA IS TESTED TO INDUSTRY STANDARDS UNDER LABORATORY CONDITIONS. OPERATING VOLTAGE AND NORMAL MANUFACTURING TOLERANCES OF LAMP, BALLAST, AND LUMINAIRE MAY AFFECT FIELD RESULTS.

**WIFI POWER POLE NOTES**

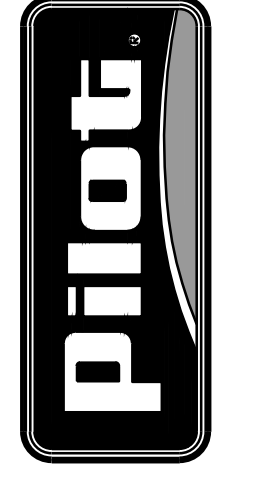
- CONTRACTOR IS TO SUPPLY 4"x4"x20' ALUMINUM POLE TO MOUNT WIRELESS ACCESS POINT EQUIPMENT TO IF SITE LIGHTING POLE IS NOT AVAILABLE.
- CONTRACTOR SHALL PROVIDE A 12"x12"x6" NEMA 3R JUNCTION BOX. JUNCTION BOX SHALL HOUSE THE OWNER SUPPLIED CISCO POWER INJECTOR. PROVIDE A CONTINUOUSLY POWERED 110V GFCI RECEPTACLE MOUNTED INSIDE THE JUNCTION BOX TO POWER THE CISCO POWER INJECTOR. JUNCTION SHALL BE NO MORE THAN 1' AWAY FROM THE WIRELESS ACCESS POINT (CISCO MR66).
- CONTRACTOR TO INSTALL OWNER SUPPLIED WIRELESS ACCESS POINT (ROUTER, CISCO MR66) ABOVE THE NEMA 3R JUNCTION BOX. ROUTE CAT 5E CABLES FOR CISCO POWER INJECTOR OUTPUT INTO WIRELESS ACCESS POINT.
- CONTRACTOR IS TO INSTALL OWNER SUPPLIED ANTENNA AT LEAST 20' ABOVE GRADE. ANTENNA HAS FOUR (4) CABLES THAT WILL CONNECT TO THE FOUR (4) INPUT PORTS ON THE WIRELESS ACCESS POINT.
- CONTRACTOR SHALL VERIFY POLE BASE REQUIREMENTS WITH STRUCTURAL ENGINEER BASED ON SITE SOIL CONDITIONS.



**2** WIFI POWER POLE  
SCALE: 3/8" = 1'-0"

FOR REFERENCE ONLY  
3/26/2020

PILOT FLYING J  
DESIGN DEPARTMENT  
5508 LONAS ROAD  
KNOXVILLE, TENNESSEE 37909  
(865) 688-7488



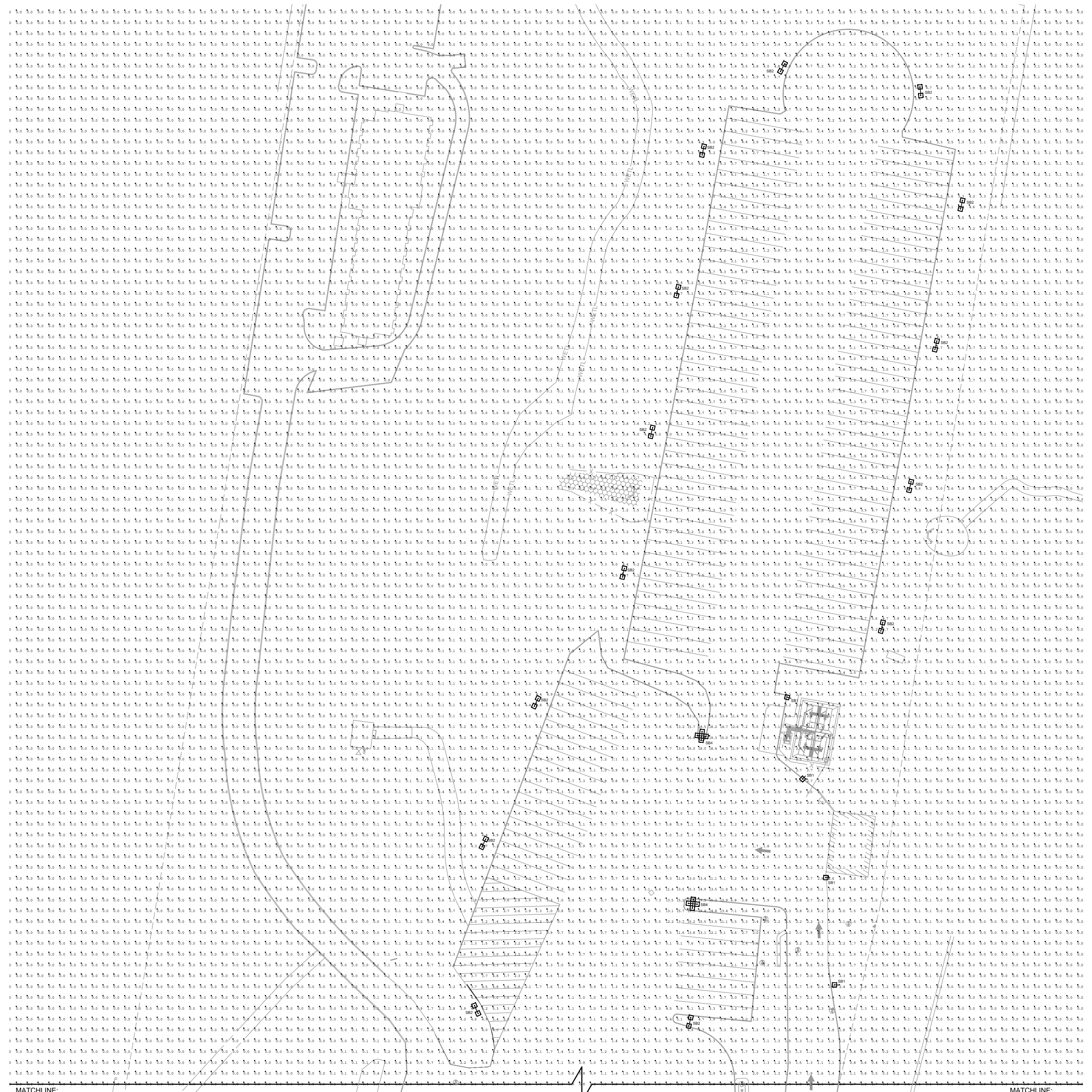
SITE PLAN  
PHOTOMETRIC  
PILOT TRAVEL CENTER  
400 ROUTE 15 (HAYNES STREET)  
STURBRIDGE, MA 01566

DATE	REV.	DESCRIPTION	INT.
02/14/20	1	DRAWN BY: MMB   PROJECT: 222-05 DESIGN BY: JUP   PAGES: 104/73	

CONFIDENTIAL  
NO USE OR DISCLOSURE OF THIS DRAWING  
IS PERMITTED WITHOUT EXPRESS  
AUTHORIZATION BY PILOT FLYING J

**PAGE**  
INTERWORKS, P.A.  
ENGINEERS & CONSULTANTS  
923 MAIN STREET, NORTH WILKESBORO, NC 28659  
PHONE: 336-667-4225 FAX: 336-667-4332

SHEET:  
**ES1.2A**

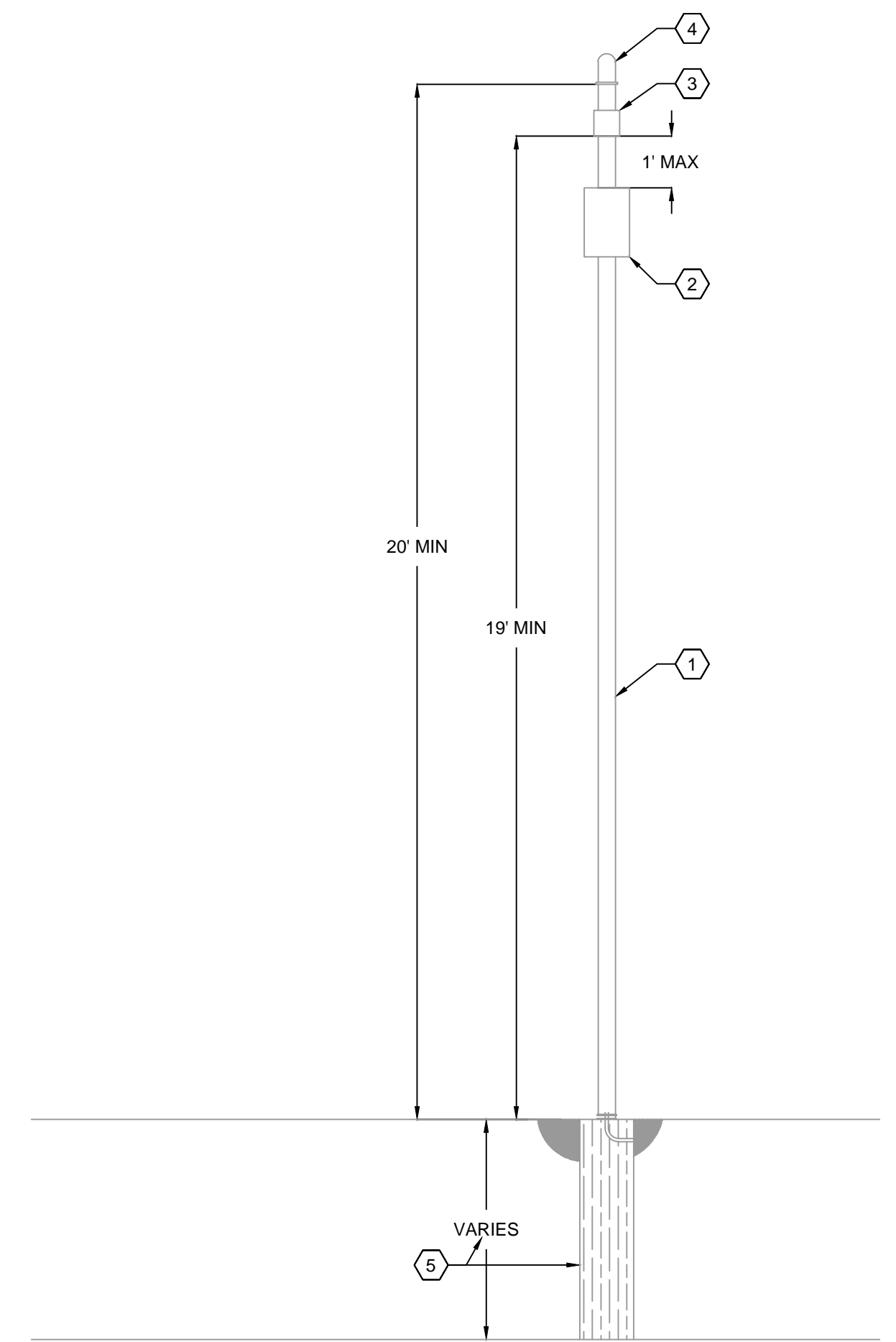


**CONTRACTOR NOTE**

1. THIS LIGHTING DESIGN IS BASED ON INFORMATION SUPPLIED BY OTHERS TO PAGE INTERWORKS, P.A. SITE DETAILS PROVIDED HEREON ARE REPRODUCED ONLY AS A VISUALIZATION AID. FIELD DEVIATIONS MAY SIGNIFICANTLY AFFECT PREDICTED PERFORMANCE. PRIOR TO INSTALLATION, CRITICAL SITE INFORMATION (POLE LOCATIONS, ORIENTATION, MOUNTING HEIGHT, ETC.) SHOULD BE COORDINATED WITH THE CONTRACTOR AND/OR SPECIFIER RESPONSIBLE FOR THE PROJECT.
2. LUMINAIRE DATA IS TESTED TO INDUSTRY STANDARDS UNDER LABORATORY CONDITIONS. OPERATING VOLTAGE AND NORMAL MANUFACTURING TOLERANCES OF LAMP, BALLAST, AND LUMINAIRE MAY AFFECT FIELD RESULTS.

**WIFI POWER POLE NOTES**

1. CONTRACTOR IS TO SUPPLY 4"x4"x20' ALUMINUM POLE TO MOUNT WIRELESS ACCESS POINT EQUIPMENT TO IF SITE LIGHTING POLE IS NOT AVAILABLE.
2. CONTRACTOR SHALL PROVIDE A 12"x12"x6" NEMA 3R JUNCTION BOX. JUNCTION BOX SHALL HOUSE THE OWNER SUPPLIED CISCO POWER INJECTOR. PROVIDE A CONTINUOUSLY POWERED 110V GFCI RECEPTACLE MOUNTED INSIDE THE JUNCTION BOX TO POWER THE CISCO POWER INJECTOR. JUNCTION SHALL BE NO MORE THAN 1' AWAY FROM THE WIRELESS ACCESS POINT (CISCO MR66).
3. CONTRACTOR TO INSTALL OWNER SUPPLIED WIRELESS ACCESS POINT (ROUTER, CISCO MR66) ABOVE THE NEMA 3R JUNCTION BOX. ROUTE CAT 5E CABLES FOR CISCO POWER INJECTOR OUTPUT INTO WIRELESS ACCESS POINT.
4. CONTRACTOR IS TO INSTALL OWNER SUPPLIED ANTENNA AT LEAST 20' ABOVE GRADE. ANTENNA HAS FOUR (4) CABLES THAT WILL CONNECT TO THE FOUR (4) INPUT PORTS ON THE WIRELESS ACCESS POINT.
5. CONTRACTOR SHALL VERIFY POLE BASE REQUIREMENTS WITH STRUCTURAL ENGINEER BASED ON SITE SOIL CONDITIONS.



2 WiFi POWER POLE  
SCALE: 3/8" = 1'-0"

MATCHLINE  
SEE SHEET ES1.2A

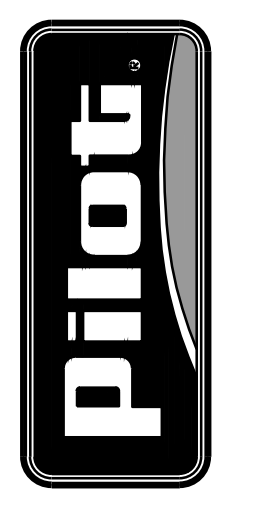
MATCHLINE  
SEE SHEET ES1.2A

1 SITE PLAN - ELECTRICAL  
SCALE: 1"=50'-0"

FOR  
REFERENCE  
ONLY

3/26/2020

PILOT FLYING J  
DESIGN DEPARTMENT  
5508 LONAS ROAD  
KNOXVILLE, TENNESSEE 37909  
(865) 688-7488



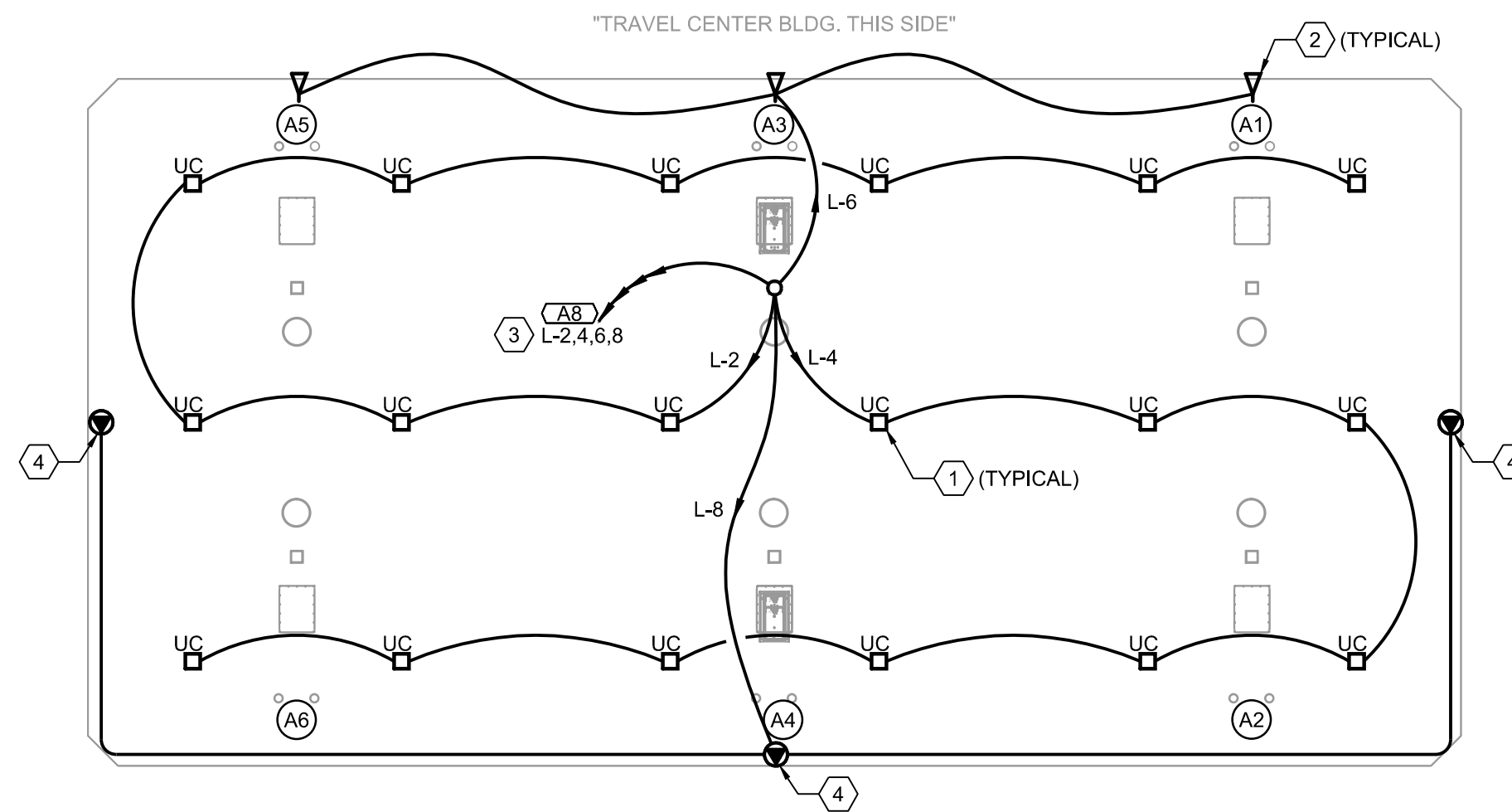
SITE PLAN  
PHOTOMETRIC  
PILOT TRAVEL CENTER  
400 ROUTE 15 (HAYNES STREET)  
STURBRIDGE, MA 01566

DATE: 02/14/20	DRAWN BY: MMB	PROJECT: 222-05	INT.
	DESIGNER: JUP <td>1 (PAGE: 104/73) <td></td> </td>	1 (PAGE: 104/73) <td></td>	
	REVISION DESCRIPTION:		

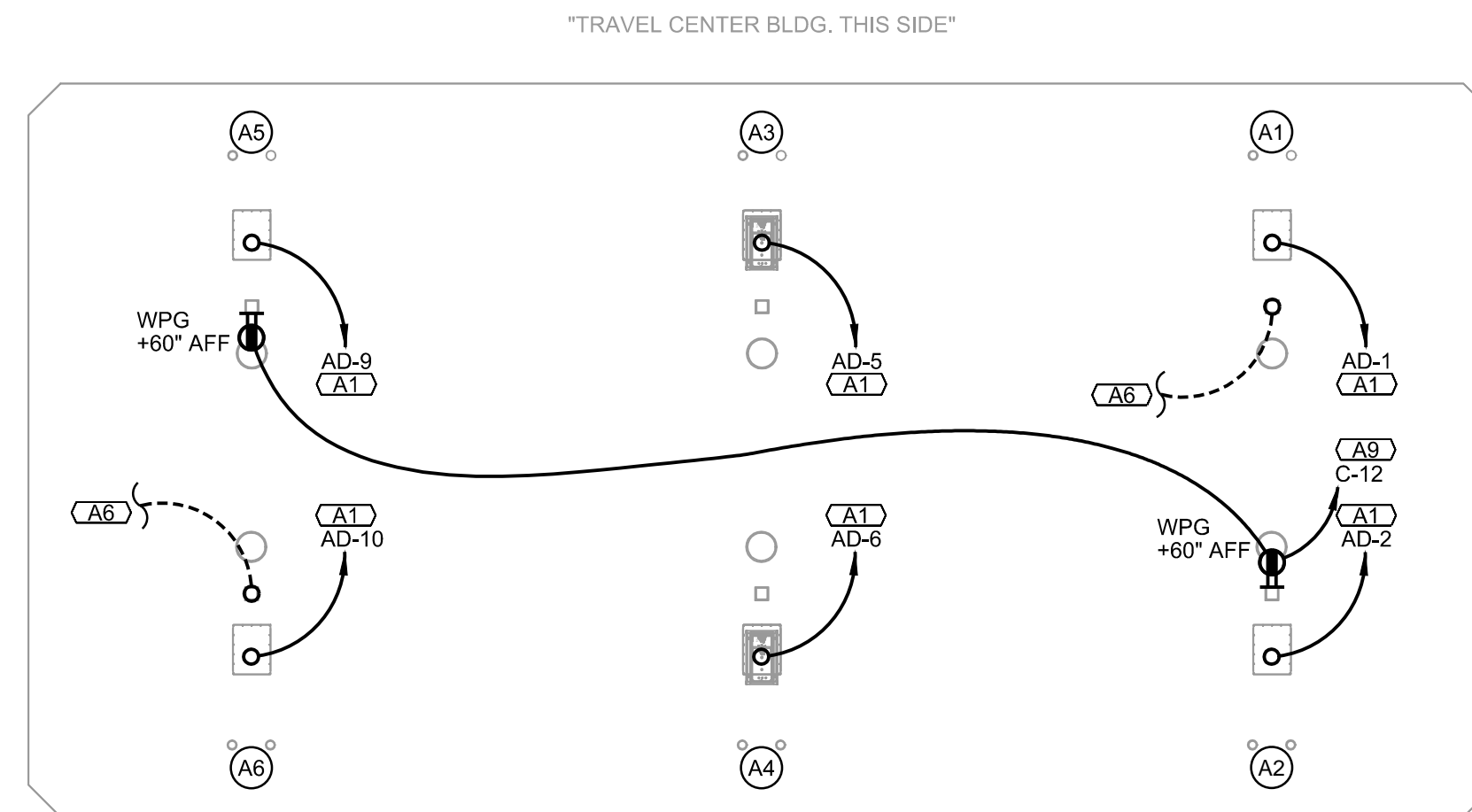
CONFIDENTIAL  
THIS DRAWING IS CONFIDENTIAL.  
NO USE OR DISCLOSURE OF THIS DRAWING  
IS PERMITTED WITHOUT EXPRESS  
AUTHORIZATION BY PILOT FLYING J.

SHEET:  
**ES1.2B**

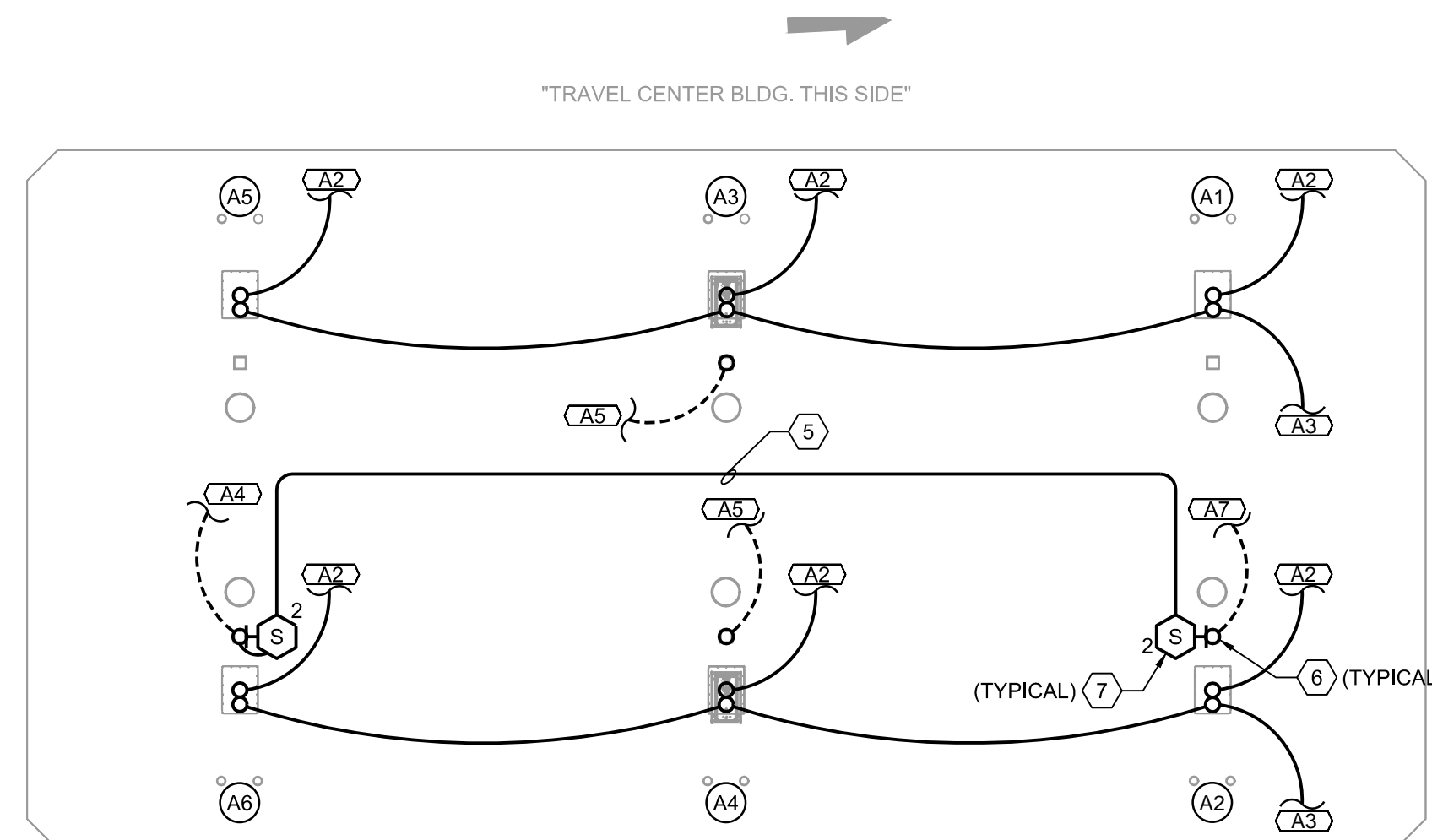
**PAGE**  
INTERWORKS, P.A.  
ENGINEERS & CONSULTANTS  
923 MAIN STREET, NORTH WILKESBORO, NC 28659  
PHONE: 336-667-4225 FAX: 336-667-4332



**1 AUTO CANOPY PLAN - LIGHTING**  
 ES2.1 SCALE: 3/32" = 1'-0"



**2 AUTO ISLAND PLAN - POWER**  
 ES2.1 SCALE: 3/32" = 1'-0"



**3 AUTO ISLAND PLAN - COMMUNICATIONS**  
 ES2.1 SCALE: 3/32" = 1'-0"

**GENERAL ELECTRICAL NOTES**

- AUTO AND TRUCK CANOPIES WILL BE PROVIDED WITH CONDUITS BY THE CANOPY MANUFACTURER, FROM A 3" X 5" HANDHOLE AT 5'-0" AFF TO UP INSIDE COLUMN. RUN CONDUITS FROM BUILDING UP INSIDE COLUMN TO THE HANDHOLE AND CONNECT TO CANOPY CONDUITS.
- CONDUIT SHALL NOT BE SURFACE MOUNTED ON CANOPY COLUMNS WITH THE EXCEPTION OF RECEPTACLES.
- ALL WIRING METHODS SHALL COMPLY WITH NEC ARTICLE 514. ALL CONDUIT RELATED TO FUELING EQUIPMENT SHALL BE RIGID GALVANIZED CONDUIT.
- COORDINATE WITH PROCESS PIPING DRAWINGS AND VEEDER-ROOT SHOP DRAWINGS.
- SENSOR CABLING SHALL COMPLY WITH VEEDER-ROOT SPECIFICATIONS.
- EC SHALL CLEARLY LABEL ALL CONDUIT FROM THE CTS AND ELECTRICAL ROOMS TO INCLUDE THE CONDUITS TERMINATION POINT IN THE FIELD. CONDUIT SHALL ALSO BE LABELED AT FINAL DESTINATION AS TO WHERE IT ORIGINATES.

**KEYED NOTES**

- CONNECT TO LED CANOPY FIXTURE. FIXTURE PROVIDED BY CANOPY CONTRACTOR. SEE SCHEDULE ON ES1.1A FOR FIXTURE INFORMATION.
- CONNECT TO CANOPY MOUNTED, 215W LED SHOEBOX FIXTURE WITH FORWARD THROW (TYPE IV) OPTICS. SHOEBOX FIXTURE PROVIDED AND MOUNTED BY CANOPY CONTRACTOR.
- CONNECT THROUGH LIGHTING CONTACTORS. LIGHTING CONTACTORS ARE CONTROLLED BY THE COMBINATION OF A PHOTOSENSOR AND ASTRONOMICAL TIMECLOCK VIA THE ENERGY MANAGEMENT CONTROLLER.
- CONNECT TO LINEAR LED WALL WASH LIGHTING SYSTEM.
- 3/4" CONDUIT FOR CANOPY SPEAKERS ON TOP OF CANOPY. ON BOTH ENDS, CONNECT TO CONDUIT STUB-OUT ON COLUMN.
- ROUTE CONDUIT UP INSIDE COLUMN AT AUTO ISLAND AND LIGHT POLE AT RV ISLAND
- CANOPY SPEAKER PROVIDED BY OTHERS.

**SPEAKER WIRING LEGEND**

ZONE NO.	DESCRIPTION
1	DIESEL CANOPY
2	AUTO CANOPY
3	STORE
4	RESTAURANT

DRAWING SYMBOLS (ZONE NO. INDICATED):

- CEILING MOUNTED SPEAKER
- WALL MOUNTED SPEAKER
- BULLHORN SPEAKER

FOR EACH SPEAKER, PROVIDE (1) CAT. 3 CABLE TO CTS ROOM.

**NOTE TO CONTRACTOR**

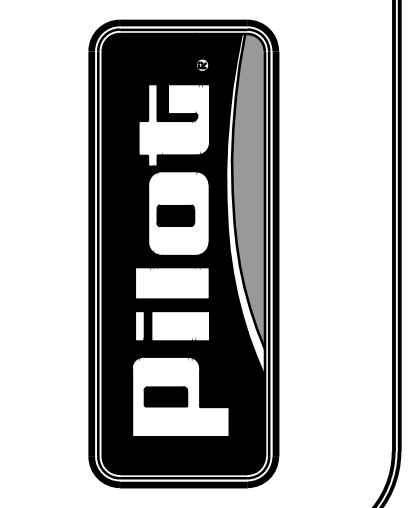
EC SHALL CLEARLY LABEL ALL CONDUIT FROM THE CTS AND ELECTRICAL ROOMS TO INCLUDE THE CONDUITS TERMINATION POINT IN THE FIELD. CONDUIT SHALL ALSO BE LABELED AT FINAL DESTINATION AS TO WHERE IT ORIGINATES.

CONDUIT TAG - REFER TO TRAVEL CENTER CONDUIT SCHEDULE SHEET ES.4 FOR ALL CONDUIT REQUIREMENTS INCLUDING SIZE, QUANTITY AND FILL.

**PAGE**  
**INTERWORKS, P.A.**  
 ENGINEERS & CONSULTANTS  
 923 MAIN STREET, NORTH WILKESBORO, NC 28659  
 PHONE: 336-667-4225 FAX: 336-667-4332



**PILOT FLYING J**  
 DESIGN DEPARTMENT  
 5508 LONAS ROAD  
 KNOXVILLE, TENNESSEE 37909  
 (865) 688-7488



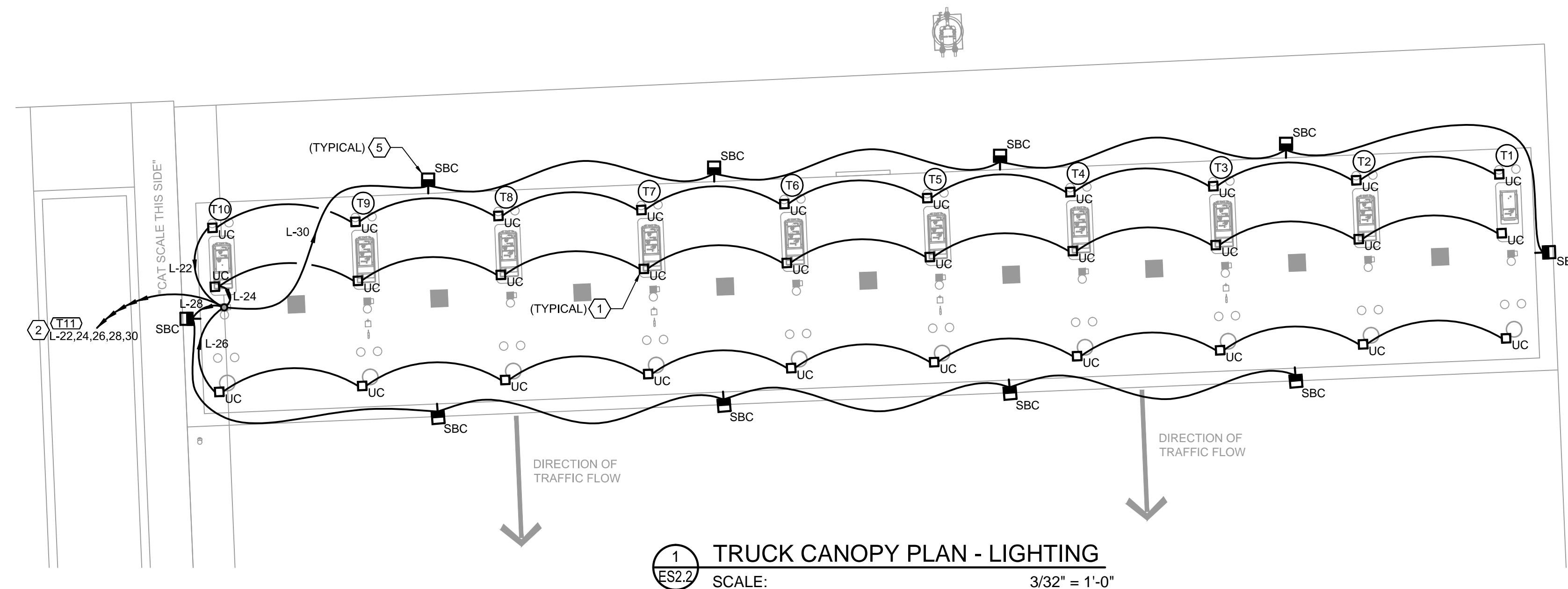
**AUTO CANOPY AND ISLAND PLANS  
 POWER AND COMMUNICATIONS**  
**PILOT TRAVEL CENTER**  
 400 ROUTE 15 (HAYNES STREET)  
 STURBRIDGE, MA 01566

DATE	REV.	DESCRIPTION
02/14/20	1	PROJECT: 222-05
	2	DESIGN: 104/23
	3	REVISION DESCRIPTION:

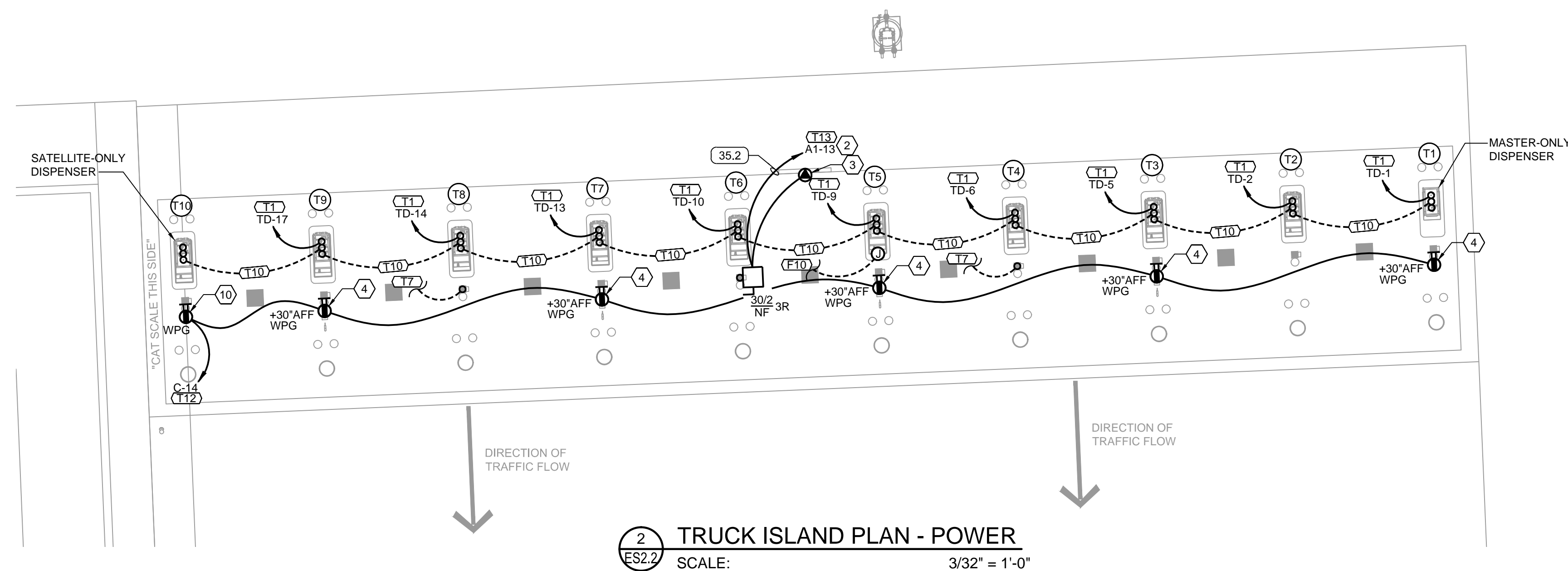
© COPYRIGHT 2020 COMPILISHED BY PILOT FLYING J  
 THIS DRAWING IS CONFIDENTIAL. NO USE OR DISCLOSURE OF THIS DRAWING IS PERMITTED, EXCEPT AS EXPRESSLY AUTHORIZED BY PILOT FLYING J.

SHEET:  
**ES2.1**

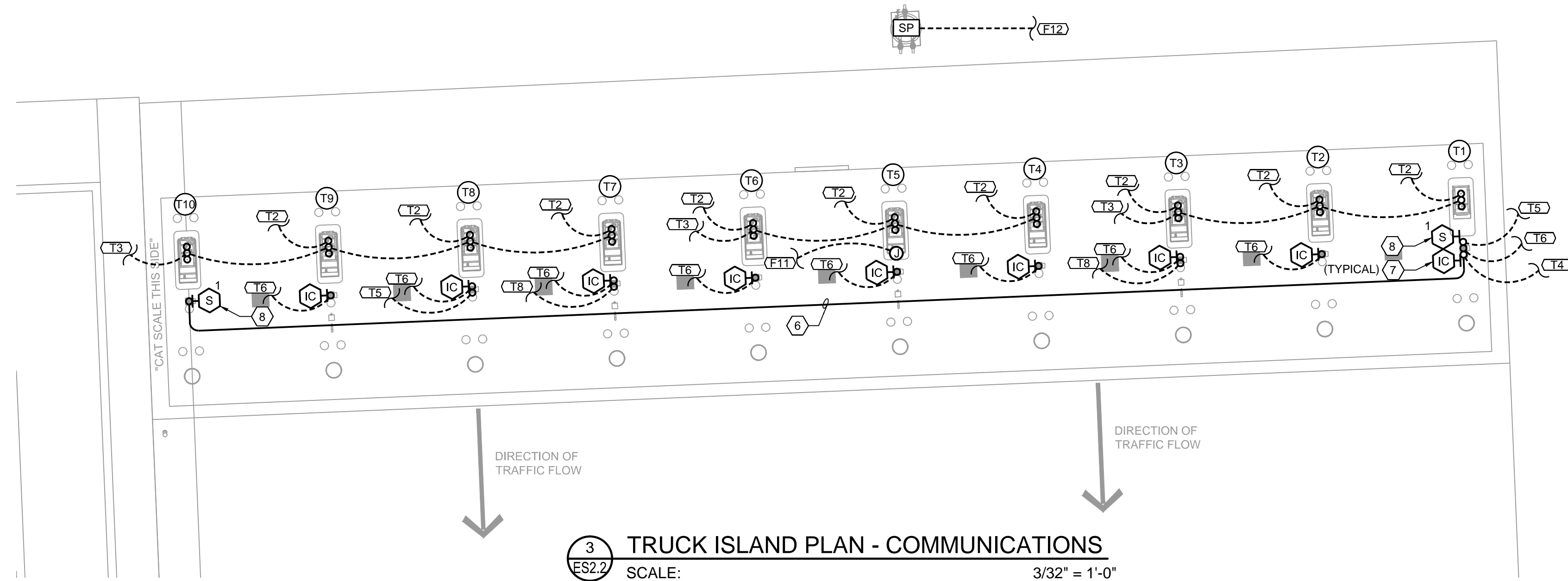




**1 TRUCK CANOPY PLAN - LIGHTING**  
 SCALE: 3/32" = 1'-0"



**2 TRUCK ISLAND PLAN - POWER**  
 SCALE: 3/32" = 1'-0"



**3 TRUCK ISLAND PLAN - COMMUNICATIONS**  
 SCALE: 3/32" = 1'-0"

**GENERAL ELECTRICAL NOTES**

- AUTO AND TRUCK CANOPIES WILL BE PROVIDED WITH CONDUITS BY THE CANOPY MANUFACTURER. FROM A 3" X 5" HANDHOLE AT 5'-0" AFF TO UP INSIDE COLUMN. RUN CONDUITS FROM BUILDING UP INSIDE COLUMN TO THE HANDHOLE AND CONNECT TO CANOPY CONDUITS.
- CONDUIT SHALL NOT BE SURFACE MOUNTED ON CANOPY COLUMNS WITH THE EXCEPTION OF RECEPTACLES.
- ALL WIRING METHODS SHALL COMPLY WITH NEC ARTICLE 514. ALL CONDUIT RELATED TO FUELING EQUIPMENT SHALL BE RIGID GALVANIZED CONDUIT.
- COORDINATE WITH PROCESS PIPING DRAWINGS AND VEEDER-ROOT SHOP DRAWINGS.
- SENSOR CABLING SHALL COMPLY WITH VEEDER-ROOT SPECIFICATIONS.
- EC SHALL CLEARLY LABEL ALL CONDUIT FROM THE CTS AND ELECTRICAL ROOMS TO INCLUDE THE CONDUITS TERMINATION POINT IN THE FIELD. CONDUIT SHALL ALSO BE LABELED AT FINAL DESTINATION AS TO WHERE IT ORIGINATES.

**KEYED NOTES**

- CONNECT TO LED CANOPY FIXTURE. FIXTURE PROVIDED BY CANOPY CONTRACTOR. SEE SCHEDULE ON ES1.1A FOR FIXTURE INFORMATION.
- CONNECT THROUGH LIGHTING CONTACTORS. LIGHTING CONTACTORS ARE CONTROLLED BY THE COMBINATION OF A PHOTOSENSOR AND ASTRONOMICAL TIMECLOCK VIA THE ENERGY MANAGEMENT CONTROLLER.
- CONNECT TO LED PRICER MOUNTED TO DIESEL FUEL CANOPY. CONTRACTOR SHALL COORDINATE CONNECTION TYPE AND CONDUIT ROUTING IN FIELD.
- SURFACE MOUNT ON COLUMN. SEE DETAIL 2-ES2.3 FOR MOUNTING HEIGHT.
- CONNECT TO CANOPY MOUNTED, 215W LED SHOE BOX FIXTURE WITH FORWARD THROW (TYPE IV) OPTICS. SHOEBOX FIXTURE PROVIDED AND MOUNTED BY CANOPY CONTRACTOR.
- 3/4" CONDUIT WITH 200LB. PULLSTRING ON TOP OF CANOPY. ON BOTH ENDS, CONNECT TO CONDUIT STUB-OUT ON COLUMN PROVIDED BY CANOPY MANUFACTURER.
- MOUNT INTERCOM PHONE FURNISHED BY OTHERS AT 5'-0" AFF.
- CANOPY SPEAKER PROVIDED BY OWNERS. SEE SHEET TC1 FOR MOUNTING HEIGHT.
- NOT USED.
- MOUNT RECEPTACLE FOR FLINT-LOC REPEATER ON COLUMN WITH THE TOP OF THE BOX 6" BELOW THE CANOPY ROOF.

**SPEAKER WIRING LEGEND**

ZONE NO.	DESCRIPTION
1	DIESEL CANOPY
2	AUTO CANOPY
3	STORE
4	RESTAURANT

DRAWING SYMBOLS (ZONE NO. INDICATED):	DESCRIPTION
(S)	CEILING MOUNTED SPEAKER
(WS)	WALL MOUNTED SPEAKER
(BS)	BULLHORN SPEAKER

FOR EACH SPEAKER, PROVIDE (1) CAT. 3 CABLE TO CTS ROOM.

**CONDUIT AND CONDUCTOR SCHEDULE**

FEEDER	DESCRIPTION
35.2	(2)#10, (1)#10 G., IN 1" C.

CONDUIT AND CONDUCTOR SCHEDULE NOTES:  
 I - ISOLATED GROUND  
 V - SIZED FOR VOLTAGE DROP  
 S - SEPARATELY DERIVED SYSTEM  
 U - SERVICE FROM UTILITY

**SENSOR LEGEND**

(SP) SUMP SENSOR

**NOTE TO CONTRACTOR**

EC SHALL CLEARLY LABEL ALL CONDUIT FROM THE CTS AND ELECTRICAL ROOMS TO INCLUDE THE CONDUITS TERMINATION POINT IN THE FIELD. CONDUIT SHALL ALSO BE LABELED AT FINAL DESTINATION AS TO WHERE IT ORIGINATES.

(X) CONDUIT TAG - REFER TO TRAVEL CENTER CONDUIT SCHEDULE SHEET ES.4 FOR ALL CONDUIT REQUIREMENTS INCLUDING SIZE, QUANTITY AND FILL.



**PILOT FLYING J**  
 DESIGN DEPARTMENT  
 5508 LONAS ROAD  
 KNOXVILLE, TENNESSEE 37909  
 (865) 688-7488



**TRUCK CANOPY AND ISLAND PLANS  
 POWER AND COMMUNICATIONS**  
**PILOT TRAVEL CENTER**  
 400 ROUTE 15 (HAYNES STREET)  
 STURBRIDGE, MA 01566

DATE	REV.	DESCRIPTION
02/14/20	1	PROJECT: 222-05
	2	DESIGN: 18/2/20
	3	REVISION DESCRIPTION:

CONFIDENTIAL  
 NO USE OR DISCLOSURE OF THIS DRAWING  
 IS PERMITTED WITHOUT EXPRESS  
 AUTHORIZATION BY PILOT FLYING J