

MAP REFERENCES

1. STURBRIDGE-1925 LAYOUT, SCALE: 1"=40', SHEETS 6 & 7 OF 14
2. "EXISTING SITE PLAN FOR JENNY C. BOUNPHASAYSONH, THAI ORCHARD VILLAGE RESTAURANT, 505 MAIN STREET, STURBRIDGE, MA," SCALE: 1"=20', DATE: 1/20/16, DRAWING NUMBER 12023, SHEET 2 OF 7, REVISION 3, BY ALBERT ENGINEERING, INC.

NOTES

1. THE TYPE OF SURVEY PERFORMED IS A BOUNDARY AND TOPOGRAPHIC SURVEY CONFORMING TO THE STANDARDS OF ACCURACY FOR A HORIZONTAL CLASS A-2 AND VERTICAL CLASS T-2 AND IS A RESURVEY OF THE SUBJECT PROPERTY. THIS SURVEY WAS PREPARED TO DEPICT THE BOUNDARY AND EXISTING CONDITIONS OF THE SUBJECT PROPERTY.
2. OWNER OF RECORD: TOWN OF STURBRIDGE RECORDED IN VOLUME 62224, PAGE 137 ON 04/17/2020 OF THE WORCESTER SOUTH DISTRICT REGISTRY OF DEEDS AND IS SHOWN ON THE STURBRIDGE TAX ASSESSOR MAP No. 415 AS LOT 501 OF BLOCK 2432.
3. TOTAL AREA OF PROPERTY = 0.47± ACRES (20,542± SQUARE FEET).
4. SITE IS LOCATED IN ZONE COMMERCIAL TOURIST DISTRICT. SETBACKS: FRONT=25', SIDE=10', REAR=10', LOT AREA=10,000 S.F.
5. SITE CONDITIONS DEPICTED ARE BASED ON AN ON THE GROUND SURVEY COMPLETED ON 8/5/2020.
6. ELEVATIONS ARE BASED ON VERTICAL DATUM NAVD88.
7. UNDERGROUND UTILITY, STRUCTURE AND FACILITY LOCATIONS DEPICTED AND NOTED HEREON HAVE BEEN COMPILED, IN PART, FROM RECORD MAPPING SUPPLIED BY THE RESPECTIVE UTILITY COMPANIES OR GOVERNMENT AGENCIES, FROM PAROL TESTIMONY AND FROM OTHER SOURCES. THESE LOCATIONS MUST BE CONSIDERED AS APPROXIMATE IN NATURE. ADDITIONALLY, OTHER SUCH FEATURES MAY EXIST ON THE SITE, THE EXISTENCE OF WHICH ARE UNKNOWN TO CME ASSOCIATES, INC. THE SIZE, LOCATION AND EXISTENCE OF ALL SUCH FEATURES MUST BE FIELD DETERMINED AND VERIFIED BY THE APPROPRIATE AUTHORITIES PRIOR TO CONSTRUCTION. CALL BEFORE YOU DIG 1-800-922-4455.

IT IS A VIOLATION OF LAW FOR ANY PERSON, UNLESS THEY ARE ACTING UNDER THE DIRECTION OF A LICENSED PROFESSIONAL ENGINEER, ARCHITECT, LANDSCAPE ARCHITECT OR LAND SURVEYOR TO ALTER IN ANY WAY, IF AN ITEM BEARING THE SURVEYOR'S SEAL, THE DOCUMENT AND INCLUDE THE ALTERNATIVE ENGINEER, ARCHITECT, LANDSCAPE ARCHITECT OR LAND SURVEYOR SHALL STAMP THE DOCUMENT AND INCLUDE THE MODIFICATION MADE BY FOLLOWING THE SCHEDULE, THE DATE OF SUCH ALTERATION, AND A SPECIFIC DESCRIPTION OF THE ALTERATION.

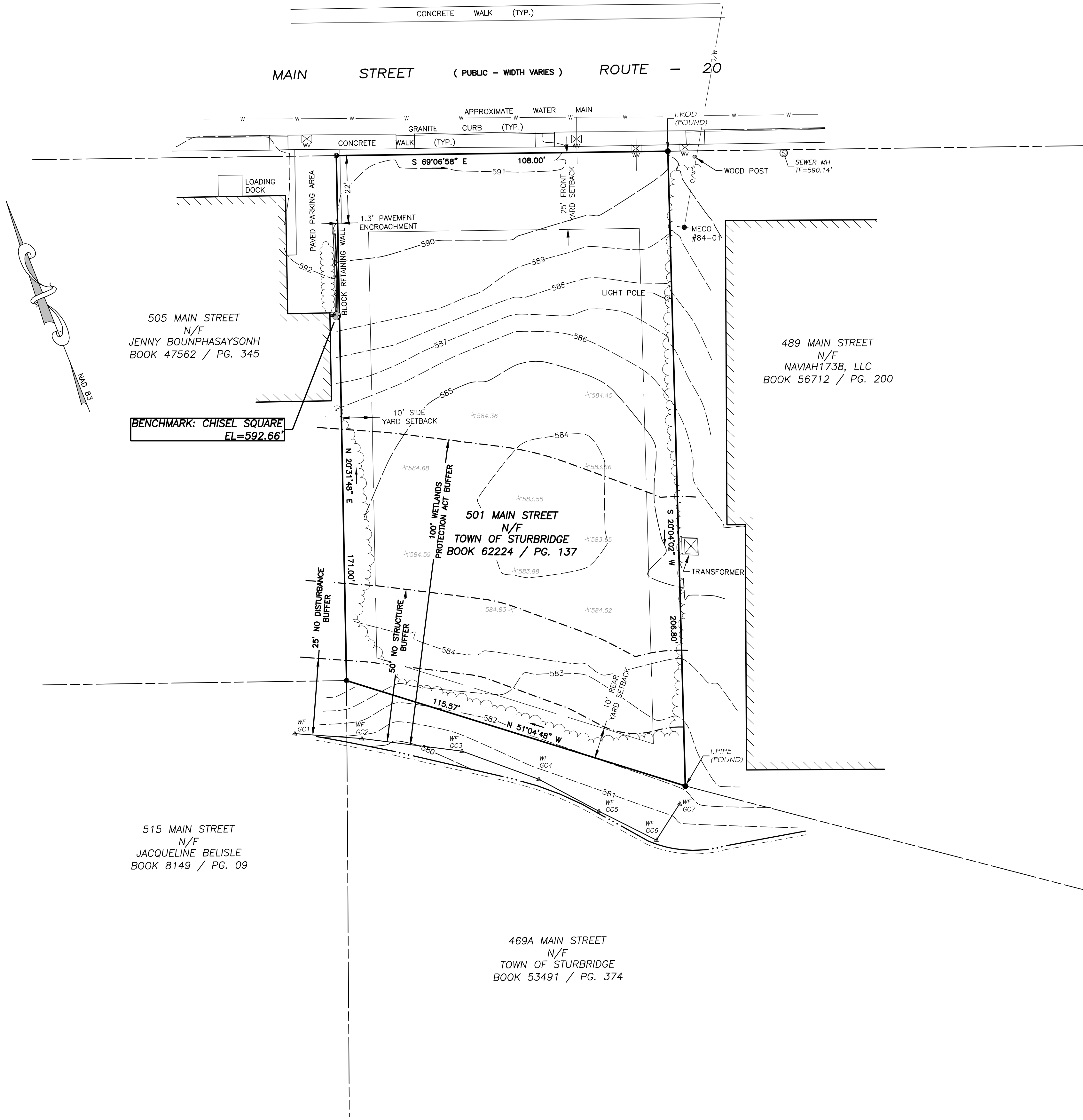
No.	Submitted / Revision	App'd.	By	Date

EXISTING CONDITIONS

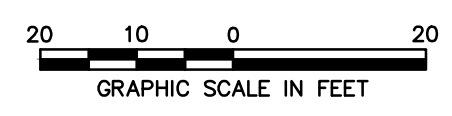
Designed By: PMP	Drawn By: ZBC/PMP	Checked By:
Issue Date: 10/29/2020	Project No: 065470	Scale: 1" = 20'

LEGEND

- RIGHT OF WAY LINE
- ADJUTERS LINE
- EDGE OF PAVEMENT
- EXISTING CONTOUR
- RETAINING WALL
- TREE LINE
- NOW OR FORMERLY
- UTILITY POLE
- BOUNDARY POINT
- IRON MONUMENT
- WATER VALVE



I CERTIFY THAT THIS PLAN CONFORMS TO THE RULES AND REGULATIONS OF THE REGISTERS OF DEEDS, AND THE PROPERTY LINES SHOWN ARE THE LINES OF EXISTING OWNERSHIP, AND THE LINES OF STREETS AND WAYS ARE THOSE OF PUBLIC OR PRIVATE STREETS AND WAYS ALREADY ESTABLISHED, AND THAT NO LINES FOR DIVISION OF EXISTING OWNERSHIP OR FOR NEW WAYS ARE SHOWN.



File: U:\MINI-MA\STURBRIDGE\065470-STURBRIDGE_PARKING_LOT_DESIGN\DWG\065470_TPO.DWG

IT IS A VIOLATION OF LAW FOR ANY PERSON, UNLESS THEY ARE ACTING UNDER THE DIRECTION OF A LICENSED PROFESSIONAL ENGINEER, ARCHITECT, LANDSCAPE ARCHITECT OR LAND SURVEYOR TO ALTER AN ITEM IN ANY WAY IF AN ITEM BEARING THE SIGNATURE OF A LICENSED PROFESSIONAL IS ALTERED. THE ALTERING ENGINEER, ARCHITECT, LANDSCAPE ARCHITECT OR LAND SURVEYOR SHALL STAMP THE DOCUMENT AND INCLUDE THE NOTATION "ALTERED BY" FOLLOWED BY THEIR SIGNATURE, THE DATE OF SUCH ALTERATION, AND A BRIEF DESCRIPTION OF THE ALTERATION.

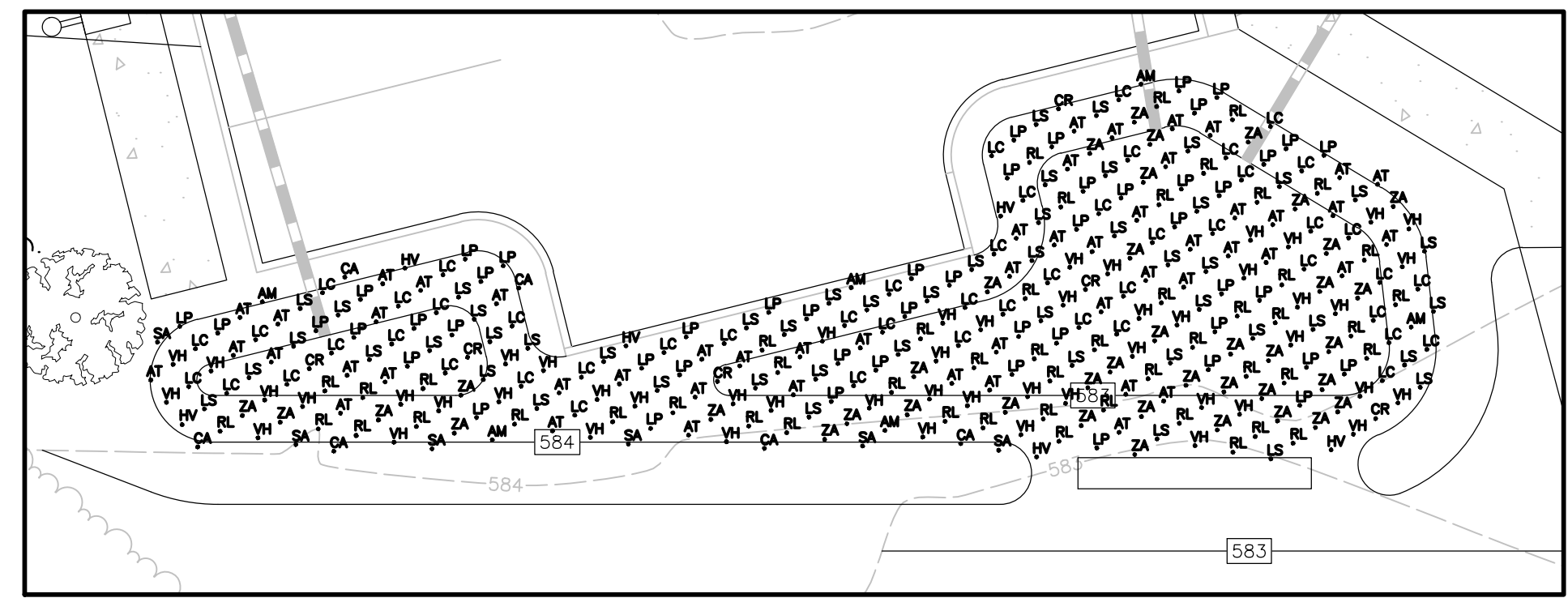
No.	Submital / Revision	App'd.	By	Date
1	MA DEP COMMENTS	PMP		12/10/2020
2	PB SUBMISSION	PMP		01/21/2021
3	PLANNER COMMENTS	PMP		03/18/2021
4	APPROVAL CONDITIONS	PMP		03/30/2021

SITE PLAN

Designed By: PMP	Drawn By: ZBC/PMP	Checked By:
Issue Date: 10/29/2020	Project No: 065470	Scale: 1" = 15'

DIMENSIONAL REQUIREMENTS COMMERCIAL TOURIST DISTRICT ACCESSORY MUNICIPAL PARKING		
ZONING CRITERIA	REQUIRED	PROVIDED
MINIMUM LOT AREA	10,000 SF	±20,542 SF
LOT FRONTAGE	100'	108'
FRONT YARD SETBACK	25'	NO STRUCTURE (±27' TO PARKING)
SIDE YARD SETBACK	10'	NO STRUCTURE (±15' TO SIDEWALK)
REAR YARD SETBACK	10'	NO STRUCTURE (±15' TO PARKING)
MAXIMUM LOT COVERAGE	30%	0%
BUFFER LANDSCAPING	FRONT YARD SETBACK	FRONT YARD SETBACK
INTERIOR PARKING LANDSCAPING	5% (20 TO 99 SPACES) 425 SF	>1,000 SF
SHADE TREES	3 (1 PER 10 SPACES)	3 EXISTING MATURE TREES TO REMAIN ALONG SOUTHERN PROPERTY LINE

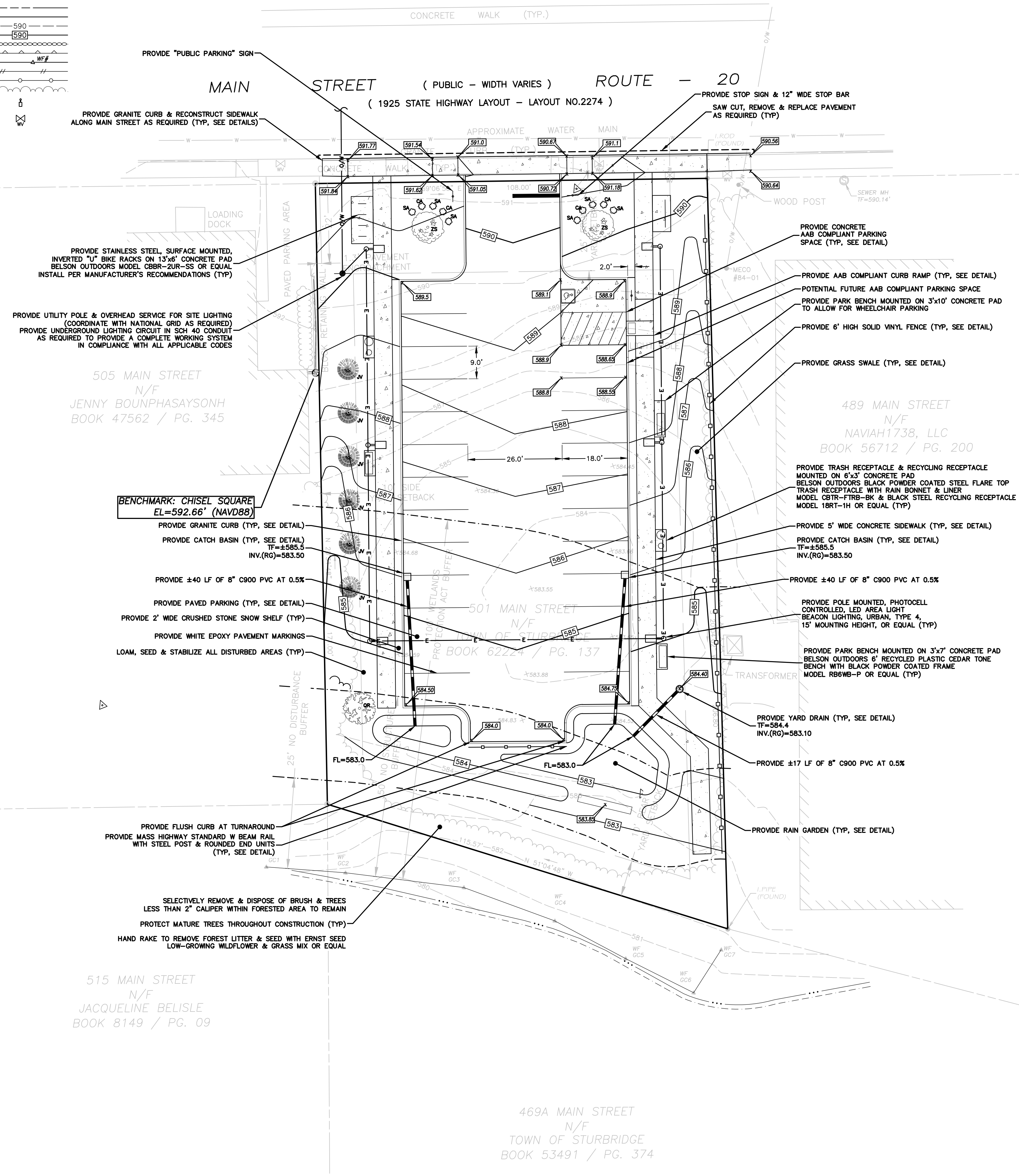
PLANTING SCHEDULE					
TREES					
COMMON NAME	SCIENTIFIC NAME	PLAN CODE	SPECIMEN	SPACING	QUANTITY
MUSASHINO JAPANESE ZELKOVA	ZELKOVA SERRATA 'MUSASHINO'	ZS	2" CALIPER	AS REQ'D	2
RED OAK	QUERCUS RUBRA	QR	2" CALIPER	AS REQ'D	1
EASTERN RED CEDAR	JUNIPERUS VIRGINIANA	JV	6-8' HT	8' O.C.	6
SHRUBS					
COMMON NAME	SCIENTIFIC NAME	PLAN CODE	SPECIMEN	SPACING	QUANTITY
MEADOWSWEET	SPIRAEA ALBA	SA	18-24"	AS REQ'D	6
SUMMERSWEET	CLETHRA ALNIFOLIA	CA	18-24"	AS REQ'D	6
BLACK CHOKEBERRY	ARONIA MELANOCARPA	AM	18-24"	AS REQ'D	6
GREY DOGWOOD	CORNUS RACEMOSA	CR	18-24"	AS REQ'D	6
WITCHHAZEL	HAMAMELIS VIRGINIANA	HV	18-24"	AS REQ'D	6
HERBACEOUS PERENNIALS					
COMMON NAME	SCIENTIFIC NAME	PLAN CODE	SPECIMEN	SPACING	QUANTITY
BLUE VERVAIN	VERBENA HASTATA	VH	2" PLUG	18-24" O.C.	50
BUTTERFLY MILKWEED	ASCLEPIAS TUBEROSA	AT	2" PLUG	18-24" O.C.	50
CARDINAL FLOWER	LOBELIA CARINALIS	LC	2" PLUG	18-24" O.C.	50
GOLDEN ALEXANDERS	ZIZIA AUREA	ZA	2" PLUG	18-24" O.C.	50
GREEN-HEADED CONEFLOWER	RUDBECKIA LACINIATA	RL	2" PLUG	18-24" O.C.	50
NEW ENGLAND BLAZING STAR	LIATRIS SCARIOSEA NOVAE-ANGLIAE	LS	2" PLUG	18-24" O.C.	50
WILD BLUE LUPINE	LUPINUS PERENNIS	LP	2" PLUG	18-24" O.C.	50



RAIN GARDEN PLANTING LAYOUT
 1" = 10'

LEGEND

PROPERTY LINE	---
ABUTTERS' LINE	---
EDGE OF PAVEMENT	---
EXISTING CONTOUR	---
PROPOSED CONTOUR	---
STONE WALL	---
RETAINING WALL	---
LIMITS OF INLAND WETLANDS	---
ORNAMENTAL FENCE	---
CHAINLINK FENCE	---
TREE LINE	---
PROPOSED AREA LIGHT	---
WATER VALVE	---



PROVIDE "PUBLIC PARKING" SIGN

PROVIDE GRANITE CURB & RECONSTRUCT SIDEWALK ALONG MAIN STREET AS REQUIRED (TYP. SEE DETAILS)

PROVIDE STOP SIGN & 12" WIDE STOP BAR

SAW CUT, REMOVE & REPLACE PAVEMENT AS REQUIRED (TYP)

PROVIDE CONCRETE AAB COMPLIANT PARKING SPACE (TYP. SEE DETAIL)

PROVIDE AAB COMPLIANT CURB RAMP (TYP. SEE DETAIL)

POTENTIAL FUTURE AAB COMPLIANT PARKING SPACE

PROVIDE PARK BENCH MOUNTED ON 3'x10' CONCRETE PAD TO ALLOW FOR WHEELCHAIR PARKING

PROVIDE 6" HIGH SOLID VINYL FENCE (TYP. SEE DETAIL)

PROVIDE GRASS SWALE (TYP. SEE DETAIL)

PROVIDE TRASH RECEPTACLE & RECYCLING RECEPTACLE MOUNTED ON 6'x3' CONCRETE PAD

BELSON OUTDOORS BLACK POWDER COATED STEEL FLARE TOP TRASH RECEPTACLE WITH RAIN BONNET & LINER MODEL CBTR-FTRB-BK & BLACK STEEL RECYCLING RECEPTACLE MODEL 18RT-1H OR EQUAL (TYP)

PROVIDE 5' WIDE CONCRETE SIDEWALK (TYP. SEE DETAIL)

PROVIDE CATCH BASIN (TYP. SEE DETAIL)

TF=±585.5
 INV.(RG)=583.50

PROVIDE ±40 LF OF 8" C900 PVC AT 0.5%

PROVIDE PAVED PARKING (TYP. SEE DETAIL)

PROVIDE 2' WIDE CRUSHED STONE SNOW SHELF (TYP)

PROVIDE WHITE EPOXY PAVEMENT MARKINGS

LOAM, SEED & STABILIZE ALL DISTURBED AREAS (TYP)

PROVIDE FLUSH CURB AT TURNAROUND

PROVIDE MASS HIGHWAY STANDARD W BEAM RAIL WITH STEEL POST & ROUNDED END UNITS (TYP. SEE DETAIL)

SELECTIVELY REMOVE & DISPOSE OF BRUSH & TREES LESS THAN 2" CALIPER WITHIN FORESTED AREA TO REMAIN

PROTECT MATURE TREES THROUGHOUT CONSTRUCTION (TYP)

HAND RAKE TO REMOVE FOREST LITTER & SEED WITH ERNST SEED LOW-GROWING WILDFLOWER & GRASS MIX OR EQUAL

505 MAIN STREET
 N/F
 JENNY BOUNPHASAYSONH
 BOOK 47562 / PG. 345

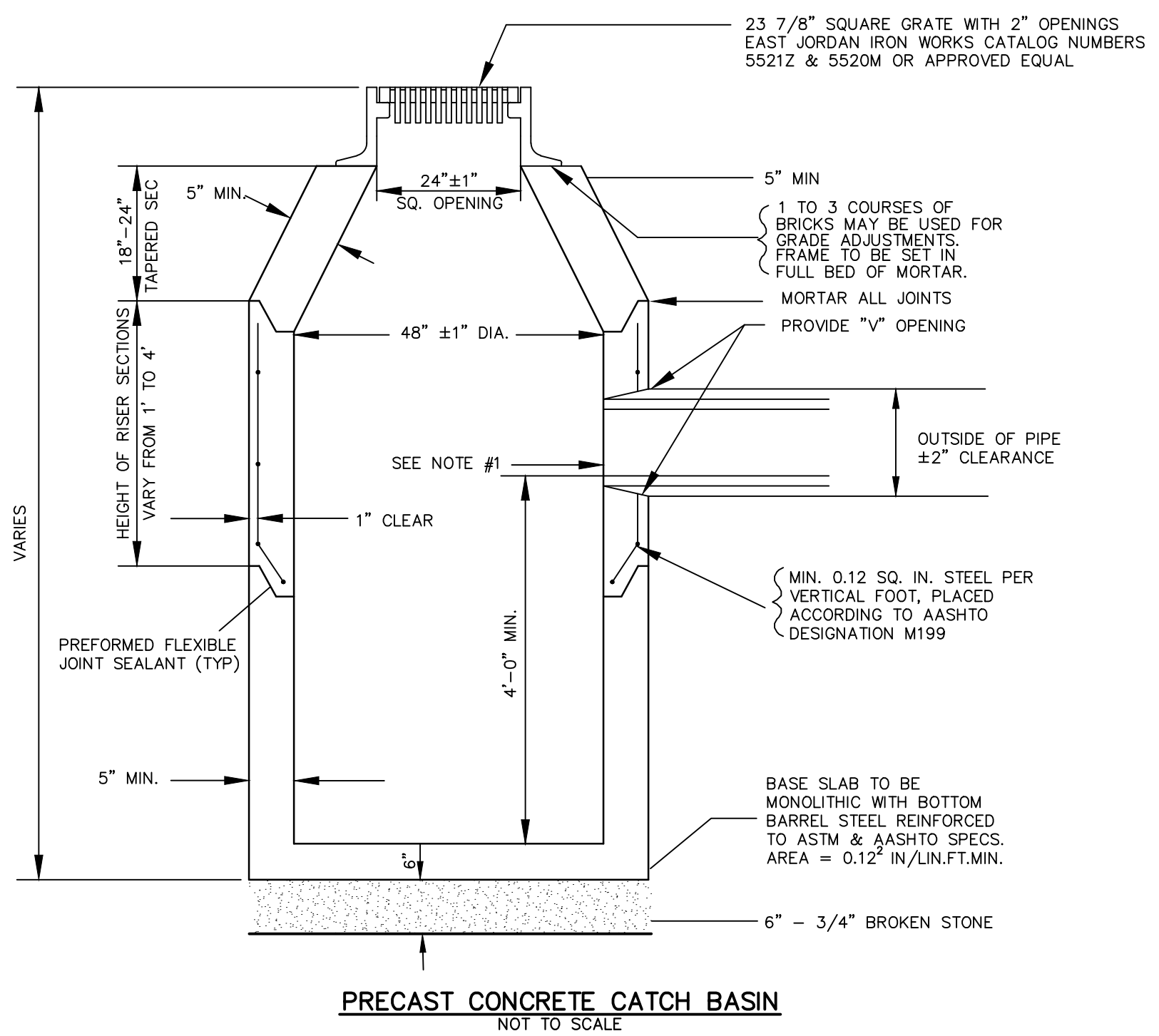
489 MAIN STREET
 N/F
 NAVIAH1738, LLC
 BOOK 56712 / PG. 200

501 MAIN STREET
 N/F
 TOWN OF STURBRIDGE
 BOOK 62224 / PG. 137

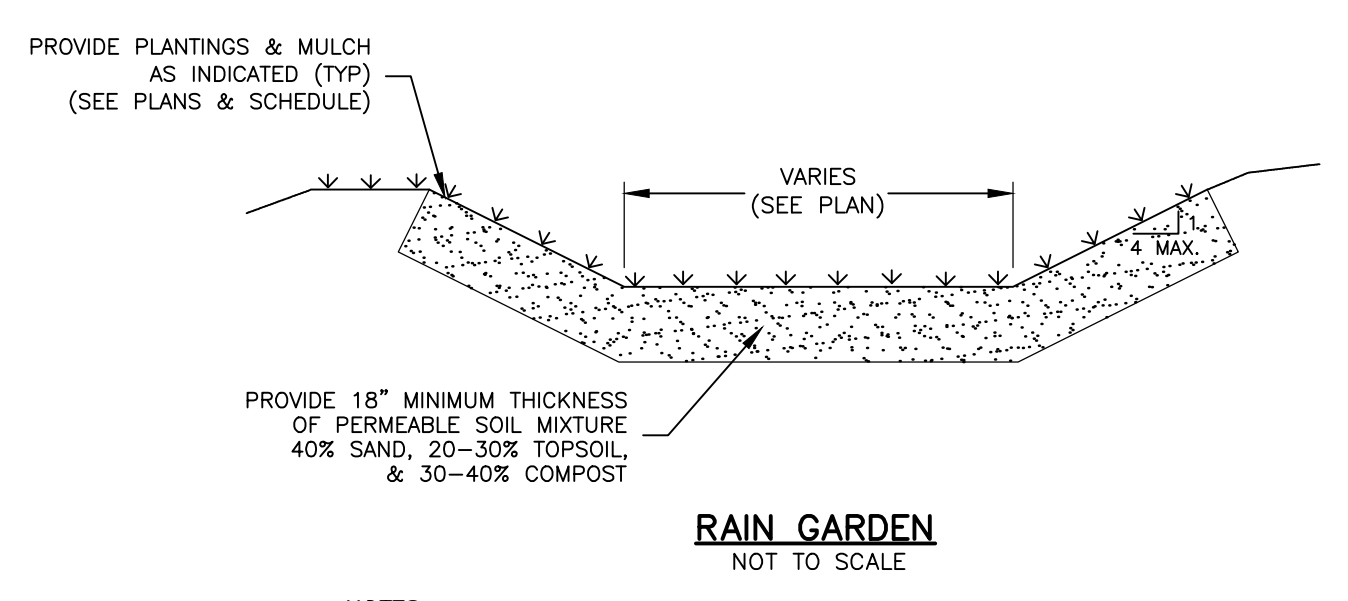
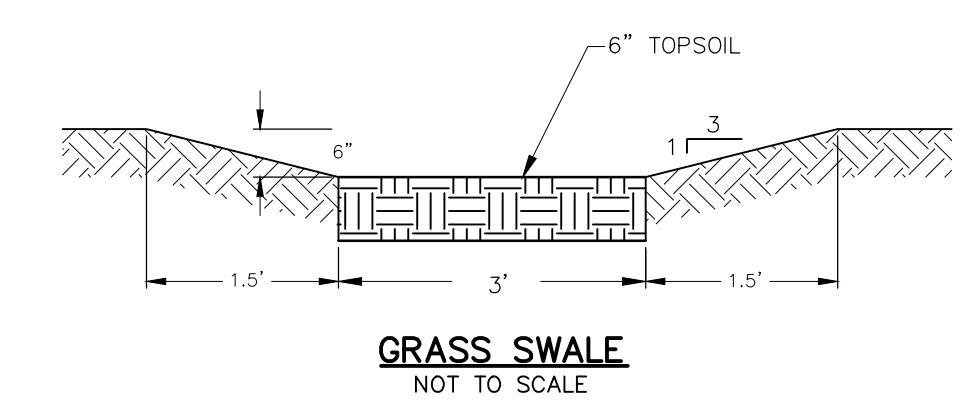
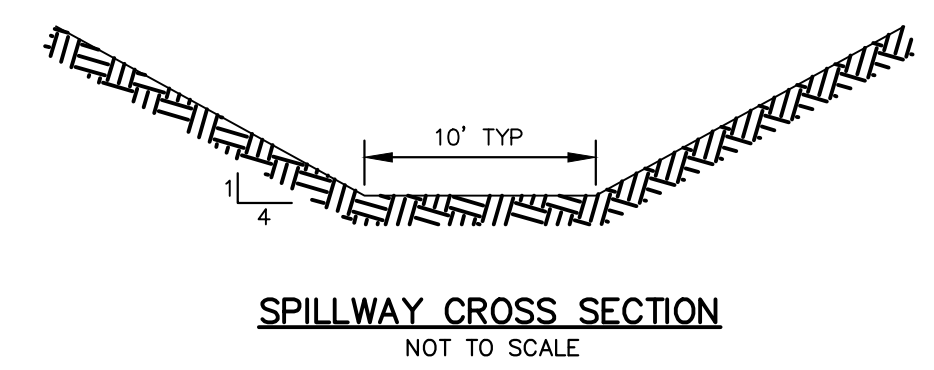
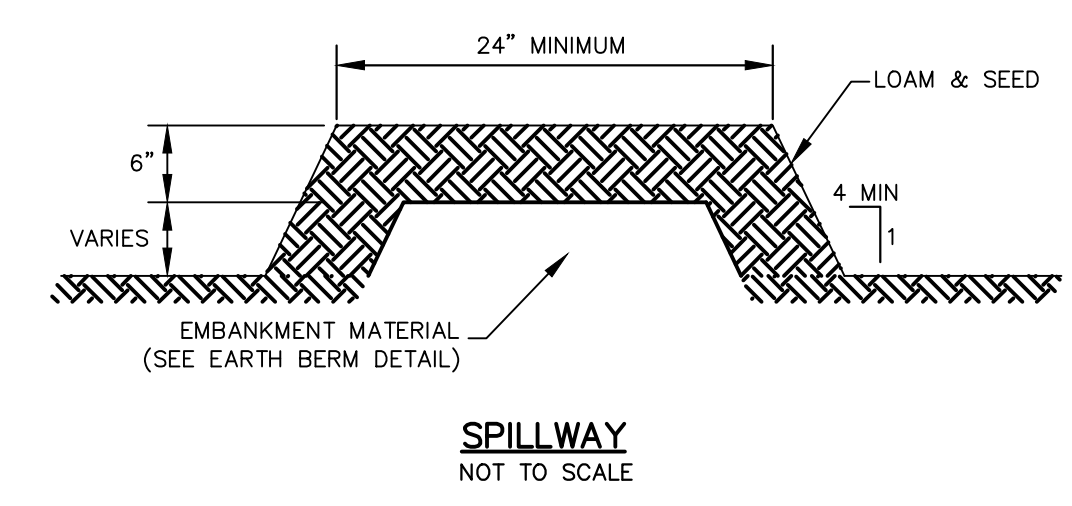
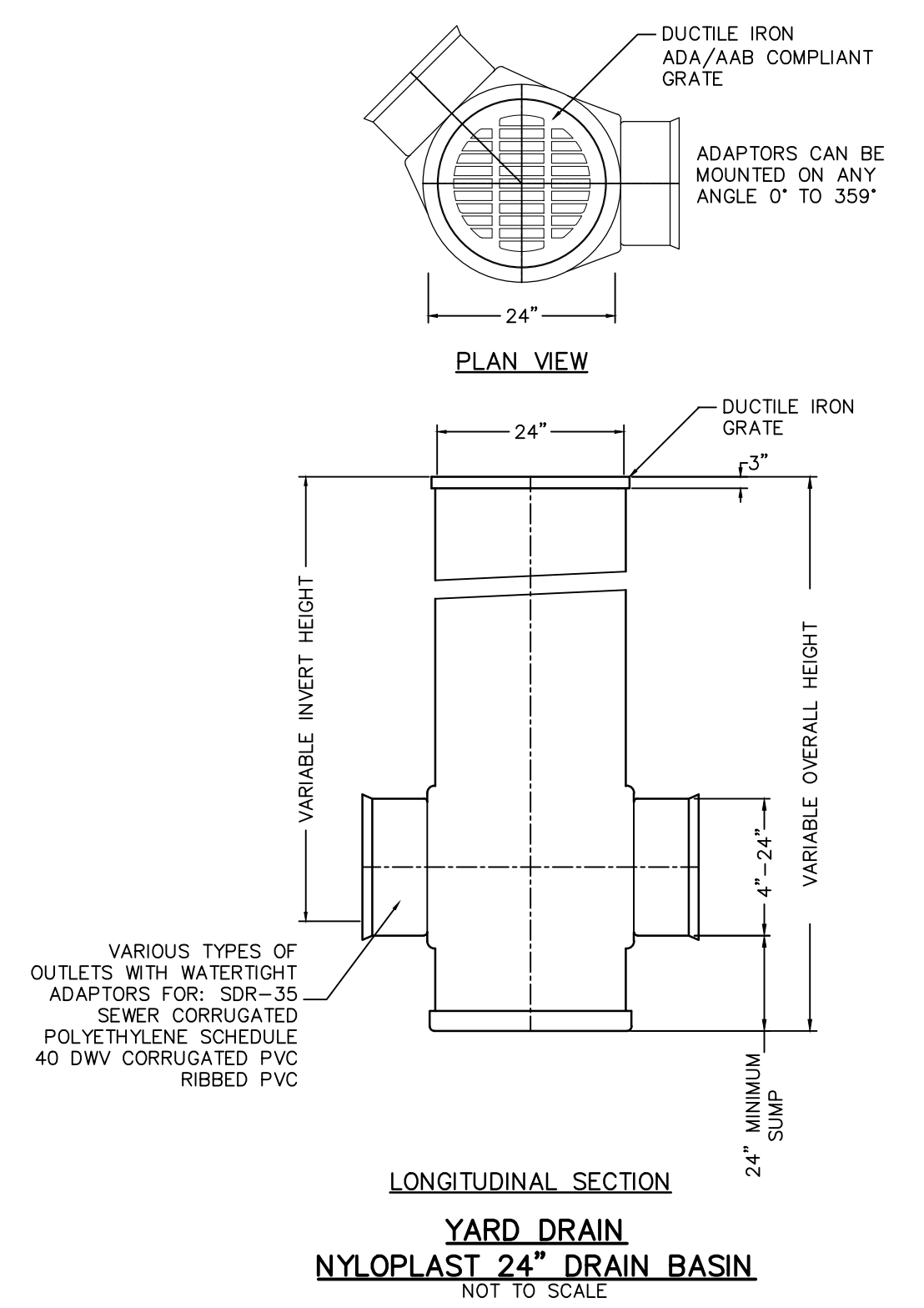
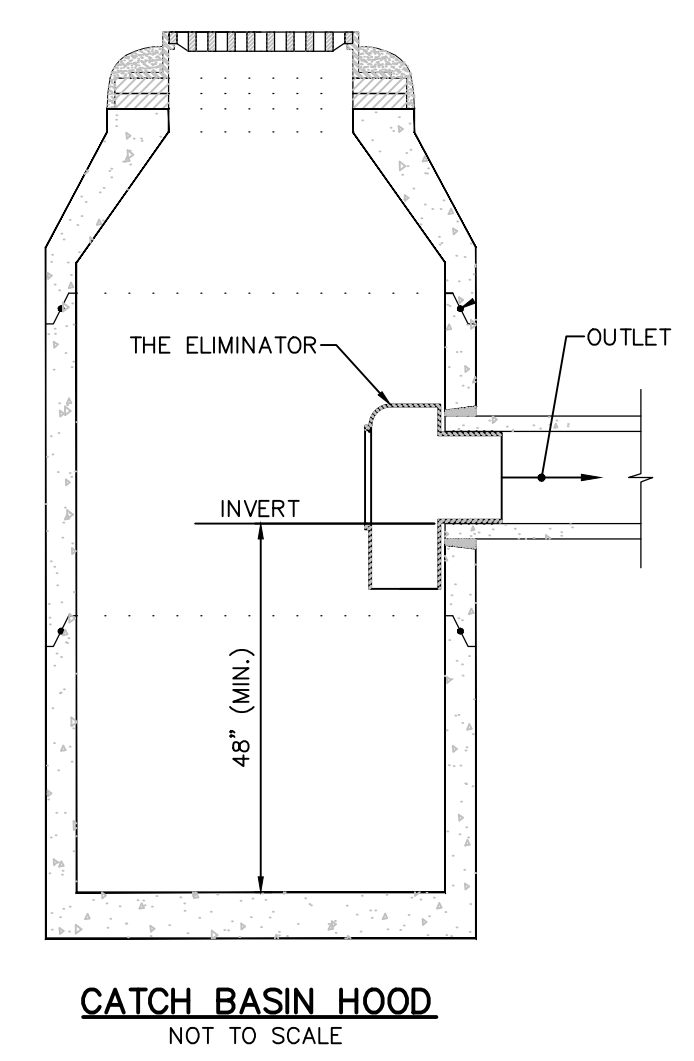
515 MAIN STREET
 N/F
 JACQUELINE BELISLE
 BOOK 8149 / PG. 09

469A MAIN STREET
 N/F
 TOWN OF STURBRIDGE
 BOOK 53491 / PG. 374

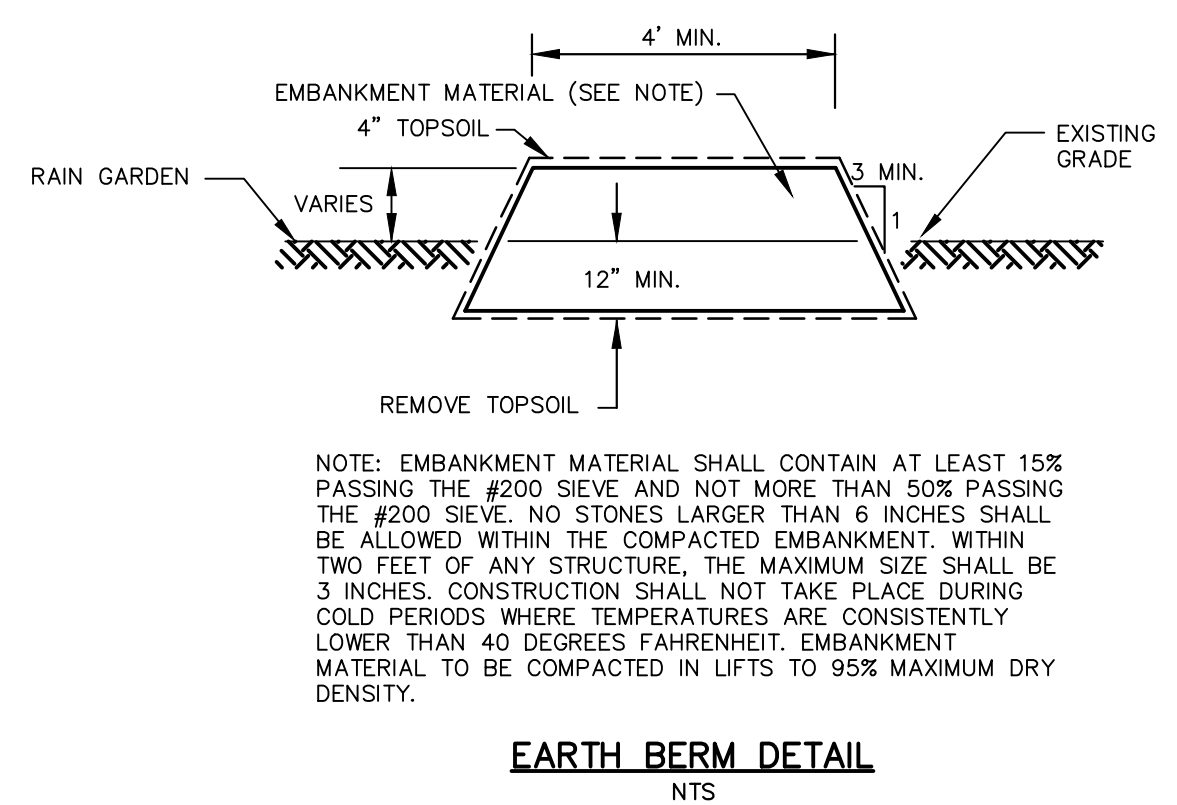
IT IS A VIOLATION OF LAW FOR ANY PERSON, UNLESS THEY ARE ACTING UNDER THE DIRECTION OF A LICENSED PROFESSIONAL ENGINEER, ARCHITECT, LANDSCAPE ARCHITECT, OR LAND SURVEYOR TO ALTER AN ITEM IN ANY WAY. IF AN ITEM BEARING THE STAMP OF A LICENSED PROFESSIONAL IS ALTERED, THE ALTERING ENGINEER, ARCHITECT, LANDSCAPE ARCHITECT OR LAND SURVEYOR SHALL STAMP THE DOCUMENT AND INCLUDE THE NOTATION "ALTERED BY" FOLLOWED BY THEIR SIGNATURE, THE DATE OF SUCH ALTERATION, AND A SPECIFIC DESCRIPTION OF THE ALTERATION.



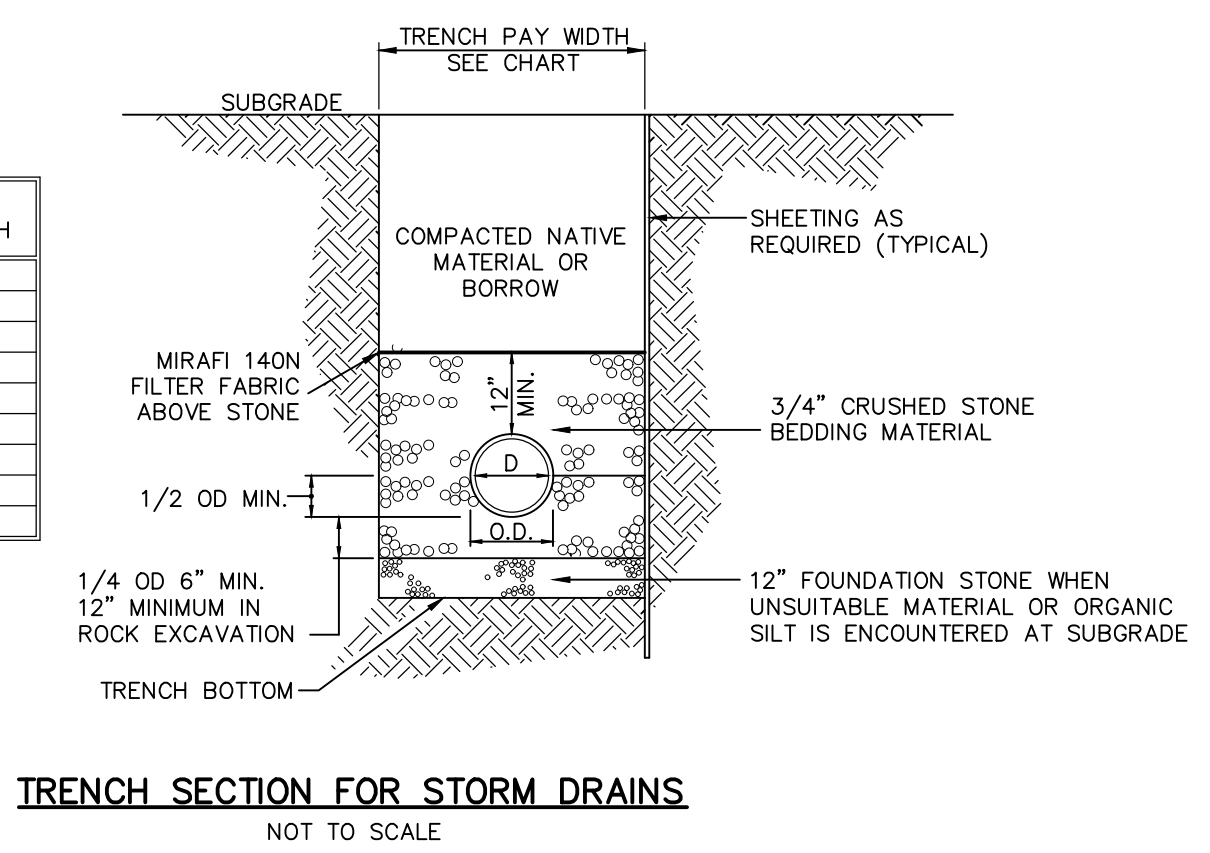
- NOTES:**
- FACE OF PIPE SHALL BE FLUSH OR NOT TO PROJECT MORE THAN 4" FROM FACE OF WALL ALONG CENTERLINE OF PIPE.
 - FOR DESCRIPTION, MATERIALS, AND CONSTRUCTION METHODS SEE MASSDOT "STANDARD SPECIFICATIONS FOR HIGHWAYS AND BRIDGES" AND CONSTRUCTION STANDARDS AND THE CONTRACT DOCUMENT SPECIFICATIONS.
 - MINIMUM DEPTH OF SUMP TO BE 4'.
 - WHEN A CURB INLET IS INSTALLED, THE OPENING IS TO BE 24" ± 1" X 27" ± 1".
 - ALL CATCH BASINS SHALL INCLUDE A CATCH BASIN HOOD FOR THE OUTLET PIPE.
 - CATCH BASIN AND ALL APPURTENANCES SHALL MEET H-20 LOADING.



- NOTES:**
- PERMEABLE SOIL MIXTURE SHALL NOT BE COMPACTED AND THE ENTIRE RAIN GARDEN SHALL BE PROTECTED FROM HEAVY EQUIPMENT TRAFFIC THROUGHOUT CONSTRUCTION.
 - THE CONTRACTOR SHALL BE LIABLE FOR THE REPLACEMENT OF THE PERMEABLE SOIL MIXTURE IF E&S CONTROLS ARE NOT INSTALLED & MAINTAINED AS INDICATED.
 - PLANT SUBSTITUTIONS MUST BE APPROVED BY THE ENGINEER PRIOR TO THE START OF CONSTRUCTION.
 - CONTRACTOR MAY SUBSTITUTE LARGER OR SMALLER SPECIMENS, AT THE DISCRETION OF THE ENGINEER, IF INDICATED SIZE IS NOT READILY AVAILABLE. MODIFICATIONS TO PLANTING DENSITY MUST BE COORDINATED WITH ENGINEER.
 - PROVIDE A TWO INCH THICK LAYER OF SHREDDED BARK MULCH FOR WEED CONTROL. DO NOT BURY THE CROWNS OF PLANTINGS.



PIPE DIAMETER	MAXIMUM TRENCH WIDTH
6"	2'-6"
8"	3'-0"
10"	3'-0"
12"	3'-0"
15"	3'-3"
18"	3'-6"
21"	4'-0"
24"	4'-6"
30"	5'-0"

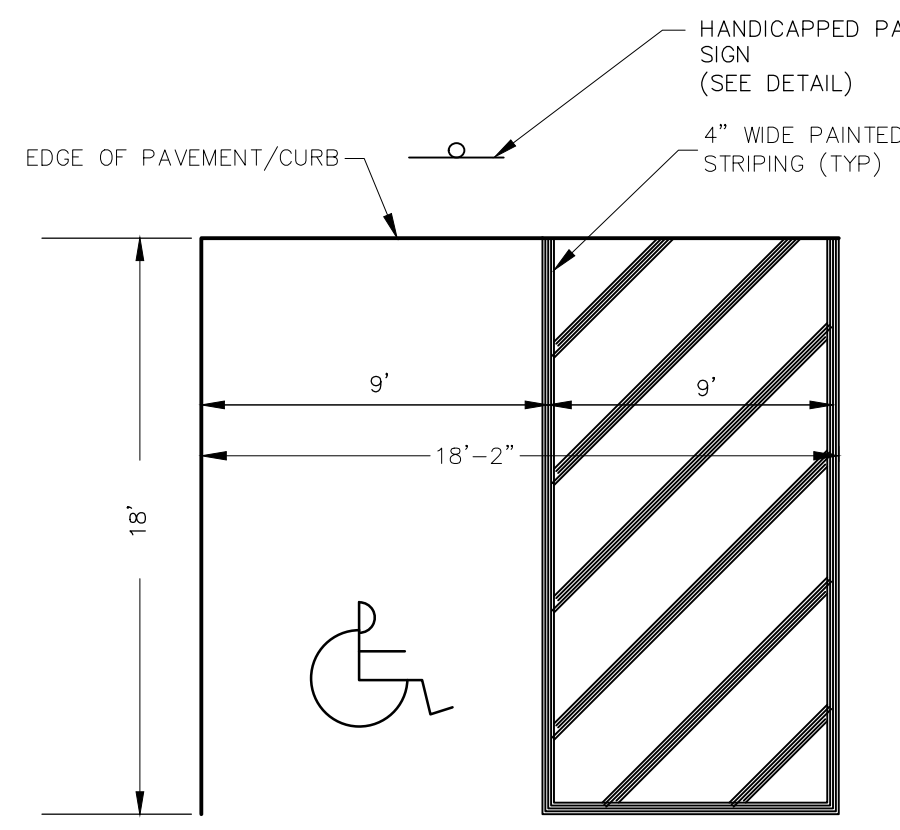


No.	Submitted / Revision	App'd.	By	Date
1	MA DEP COMMENTS	PMP		12/10/2020
2	PB SUBMISSION	PMP		01/21/2021
3	PLANNER COMMENTS	PMP		03/18/2021
4	APPROVAL CONDITIONS	PMP		03/30/2021

CONSTRUCTION DETAILS

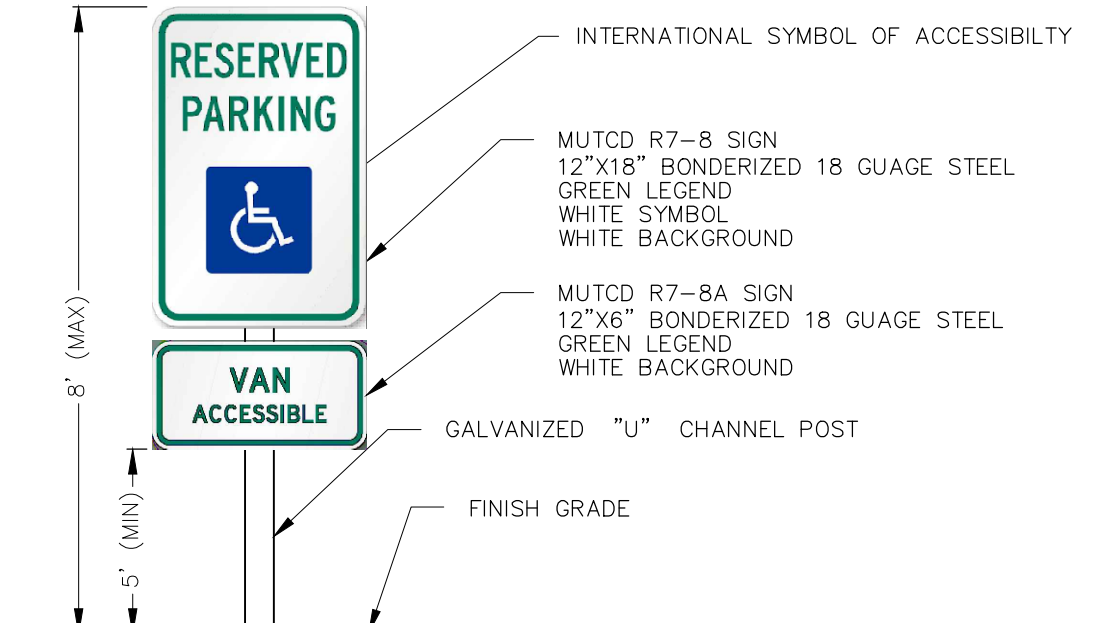
Designed By:	Drawn By:	Checked By:
PMP	ZBC/PMP	
Issue Date:	Project No:	Scale:
10/29/2020	065470	AS NOTED

IT IS A VIOLATION OF LAW FOR ANY PERSON, UNLESS THEY ARE ACTING UNDER THE DIRECTION OF A LICENSED PROFESSIONAL ENGINEER, ARCHITECT, LANDSCAPE ARCHITECT OR LAND SURVEYOR TO ALTER AN ITEM IN ANY WAY IF AN ITEM BEARING THE SIGNATURE OF SAID PROFESSIONAL IS ALTERED. THE ALTERING ENGINEER, ARCHITECT, LANDSCAPE ARCHITECT OR LAND SURVEYOR SHALL STAMP THE DOCUMENT AND INCLUDE THE NOTATION "ALTERED BY" FOLLOWED BY THEIR SIGNATURE, THE DATE OF SUCH ALTERATION, AND A BRIEF DESCRIPTION OF THE ALTERATION.

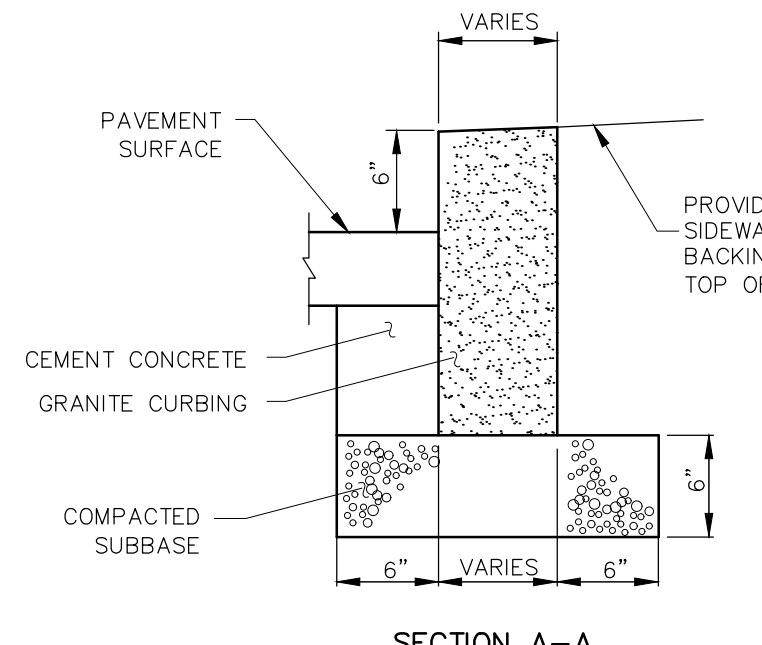


HANDICAP PARKING LAYOUT
 NOT TO SCALE

- NOTES:
 1. VAN ACCESSIBLE SPACES REQUIRE AN 8' MIN. SPACE WITH AN 8' MIN. HATCHED AREA.

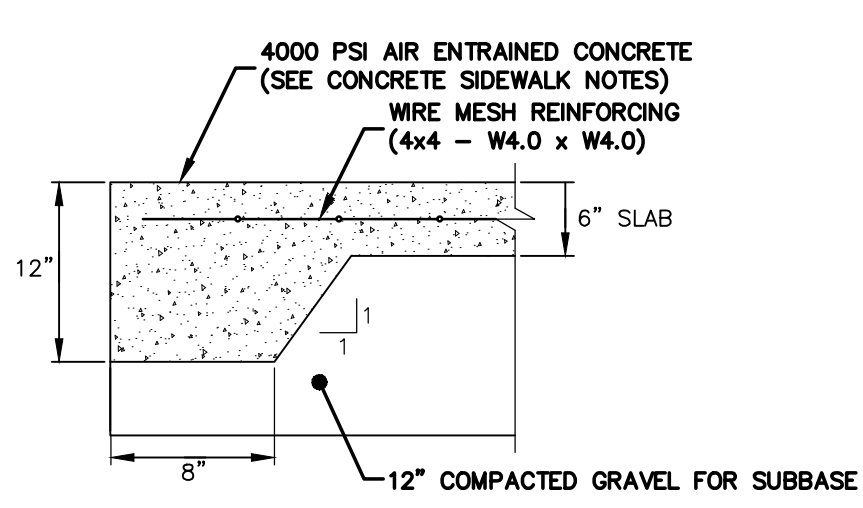


HANDICAPPED PARKING SIGN
 NOT TO SCALE



GRANITE CURB DETAIL
 NOT TO SCALE

- NOTES:
 1. CURBING SHALL BE TYPE VB.
 2. MORTAR CURBING JOINTS WITH NON-SHRINK GROUT
 3. INSTALLATION SHALL CONFORM TO MASSDOT CONSTRUCTION STANDARD E106.3.0
 4. CEMENT CONCRETE SHALL EXTEND UNDER TAPERED ENDS OF CURBING TO PROVIDE ADDITIONAL SUPPORT AT JOINTS.



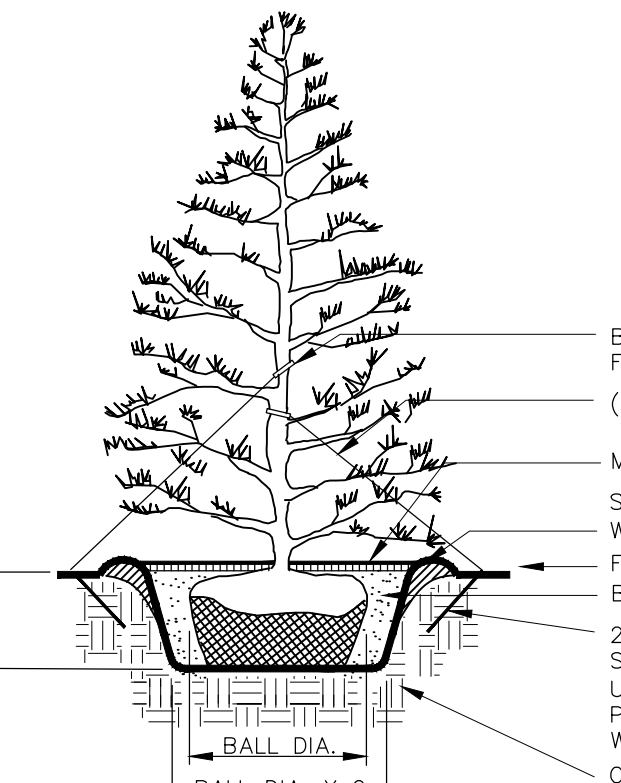
CONCRETE PAVING DETAIL (HANDICAP PARKING SPACE)
 NOT TO SCALE

WHEELCHAIR RAMP NOTES

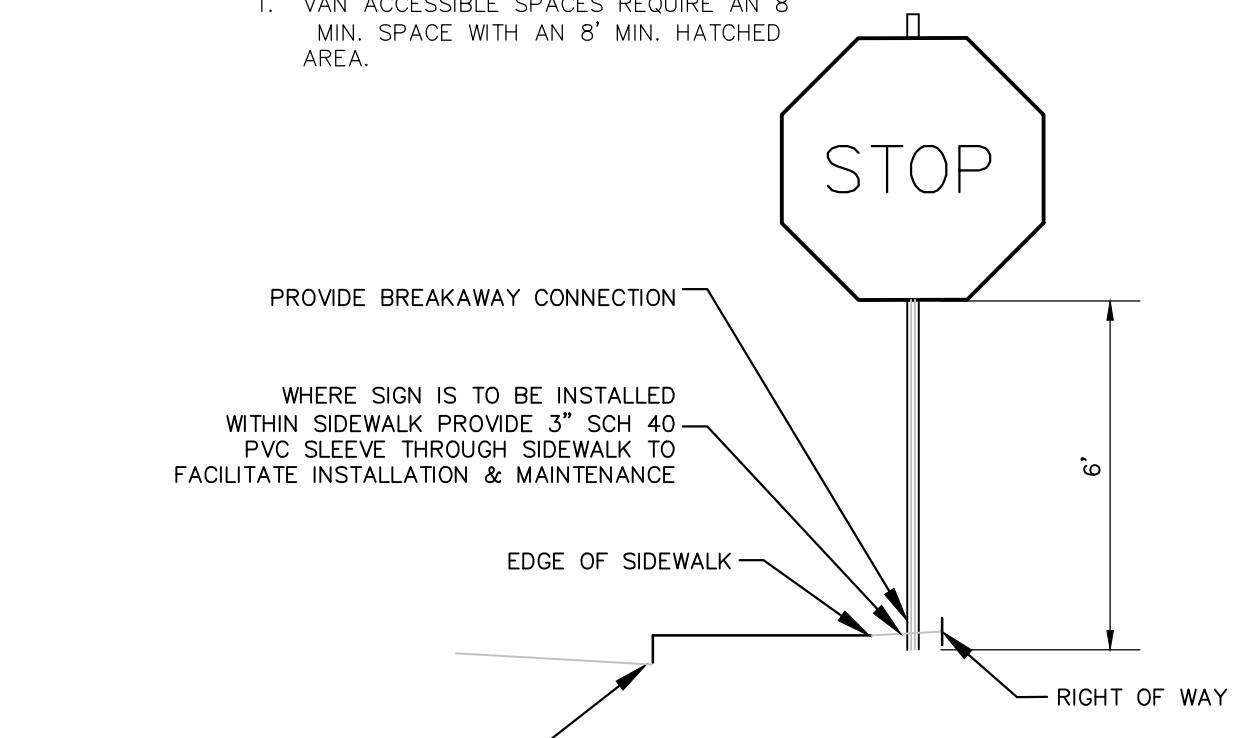
- 1.) SIDEWALK CROSS SLOPES, AS INDICATED IN THE STANDARD SPECIFICATIONS, WILL BE AT 1.6% MAXIMUM, 1.5% PREFERRED FOR BRICK, CEMENT CONCRETE AND BITUMINOUS CONCRETE. THE ONLY EXCEPTION TO SIDEWALK CROSS SLOPES ON BRIDGES WHICH WILL BE 1% (REFER TO STANDARD SPECIFICATIONS FOR HIGHWAYS AND BRIDGES, SECTION 700). IN ACCORDANCE WITH THE ARCHITECTURAL ACCESS BOARD (AAB) RULES AND REGULATIONS THE SIDEWALK CROSS SLOPE CANNOT EXCEED 2.0%.
- 2.) AN UNOBSTRUCTED PATH OF TRAVEL WITH A MINIMUM WIDTH OF 3' SHALL BE MAINTAINED. THE DESIRABLE MINIMUM WIDTH IS 3'-3".
- 3.) THE WHEELCHAIR RAMP SLOPE AND SIDE SLOPES (TRANSITIONS) MUST NOT EXCEED 1:12. (8.0% MAXIMUM 7.5% PREFERRED) HOWEVER THESE SLOPES MAY BE FLATTER THAN 1:12 WHEN WARRANTED BY SURROUNDING CONDITIONS.
- 4.) HIGH SIDE CURB TRANSITION LENGTH (L_T) SHALL BE DETERMINED BASED ON ROADWAY PROFILE GRADE. SEE MASSDOT CONSTRUCTION STANDARD E 107.9.0. (SEE TABLE)
- 5.) IN NO CASE, WHERE A STOP LINE IS WARRANTED, SHALL A RAMP BE PLACED BEHIND THE STOP LINE.
- 6.) FIXED OBJECTS (I.E. UTILITY POLES, HYDRANTS, ETC.) MUST NOT ENCROACH ON ANY PART OF A WHEELCHAIR RAMP, INCLUDING TRANSITION SLOPES.
- 7.) AT NO TIME IS ANY PART OF THE WHEELCHAIR RAMP, EXCLUDING CURB TRANSITIONS, TO BE LOCATED OUTSIDE OF THE CROSSWALK. WHEELCHAIR RAMP ENTRANCE IS TO BE CENTERED IN THE CROSSWALK WHENEVER POSSIBLE.
- 8.) CATCH BASINS WHICH ARE TO BE LOCATED IN THE VICINITY OF A WHEELCHAIR RAMP SHALL BE LOCATED UP-GRADE OF WHEELCHAIR RAMP ENTRANCE.
- 9.) THE ENTRANCE OF A WHEELCHAIR RAMP SHALL BE FLUSH WITH THE ROADWAY.
- 10.) TESTING SURFACE: WHEN TESTING WITH A STRAIGHTEDGE PLACED PARALLEL TO THE LINE OF SLOPE, THERE SHALL BE NO DEVIATION FROM A TRUE SURFACE IN EXCESS OF 1/4".
- 11.) ALL WHEELCHAIR RAMPS SHALL BE CEMENT CONCRETE.

WHEELCHAIR RAMP NOTES

- 1.) DETECTABLE WARNING PANELS SHALL BE CAST IN PLACE CAST IRON PANELS PERMANENTLY APPLIED TO RAMP (ADA TILE OR APPROVED EQUAL). DETECTABLE WARNING SURFACES SHALL CONTRAST VISUALLY WITH ADJACENT WALKING SURFACES EITHER LIGHT-ON-DARK, OR DARK-ON-LIGHT. DETECTABLE WARNING PANELS ARE REQUIRED ON ALL PROPOSED WHEELCHAIR RAMPS.

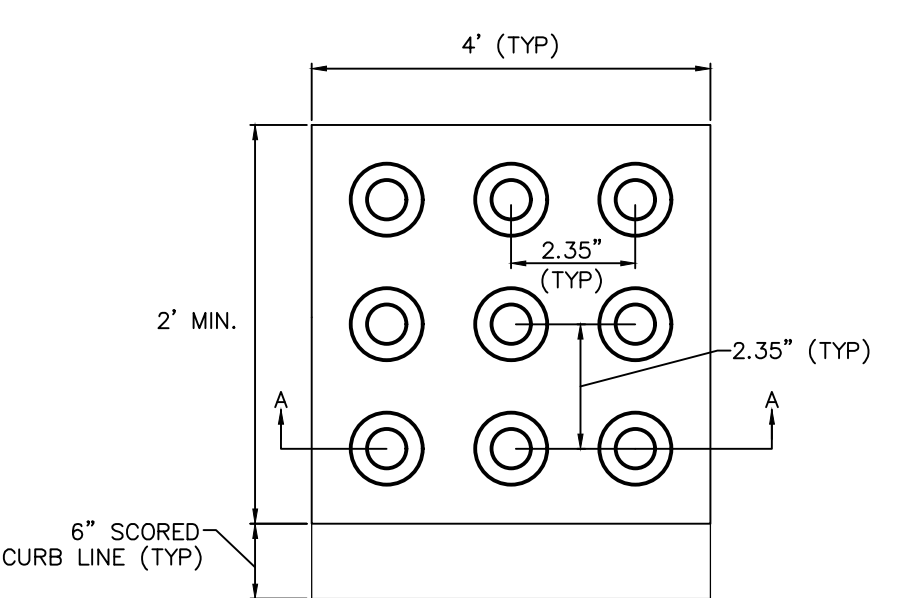


TREE PLANTING DETAIL
 NOT TO SCALE



TYPICAL SIGN DETAIL
 NTS

- NOTES:
 1. MINIMUM DISTANCE FROM EDGE OF TRAVELED WAY TO SIGN SHALL BE 2'

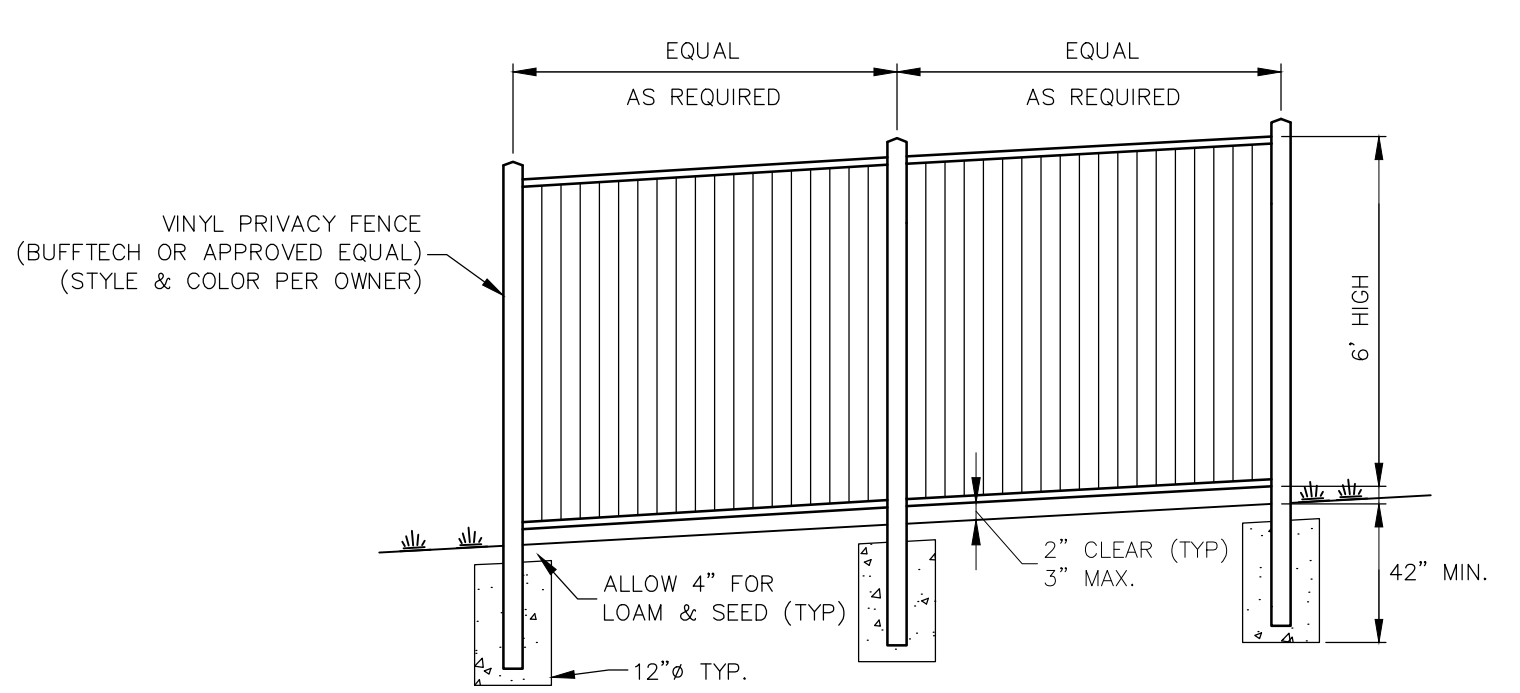


DETAIL OF DETECTABLE WARNING PANEL



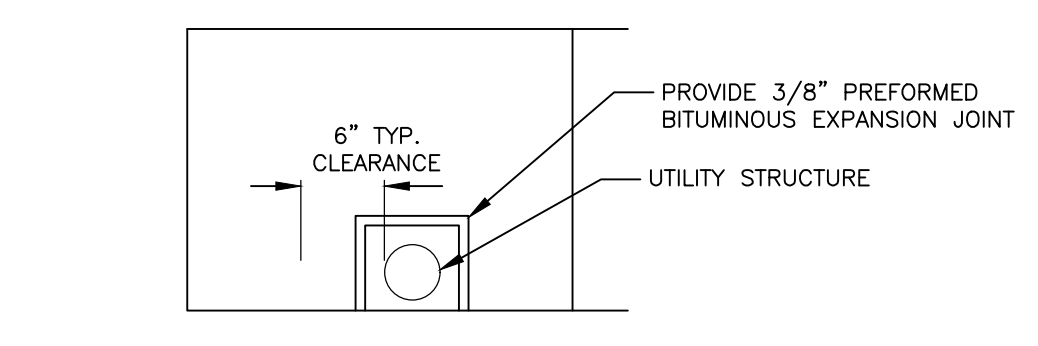
SECTION A-A

NOTE:
 DETECTABLE WARNING PANELS SHALL BE YELLOW.

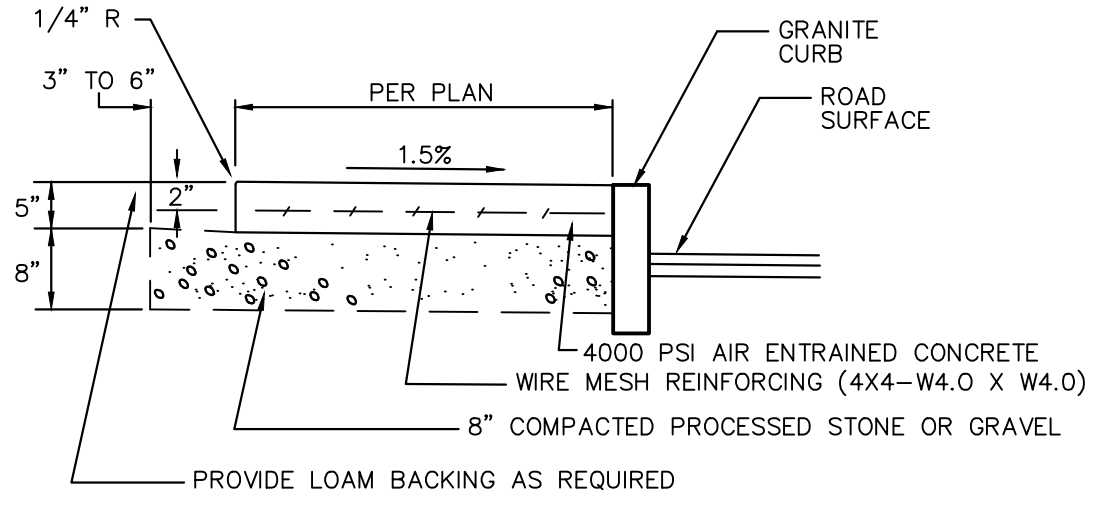


FENCE DETAIL
 NOT TO SCALE

- NOTE:
 1. SHOP DRAWINGS DEPICTING DETAILS OF RACKED SLOPED CONSTRUCTION SHALL BE SUBMITTED FOR APPROVAL.



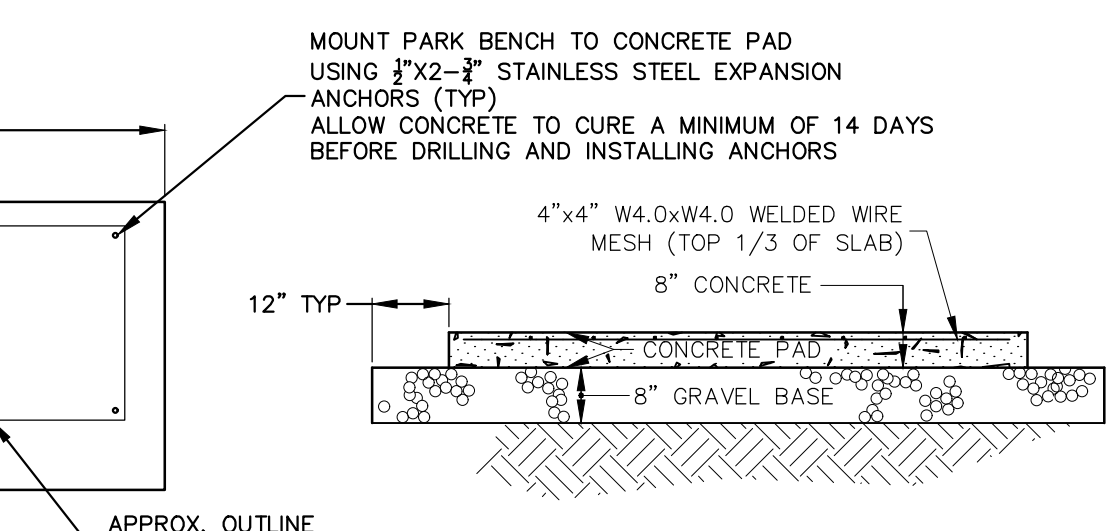
BOX OUT AT UTILITY



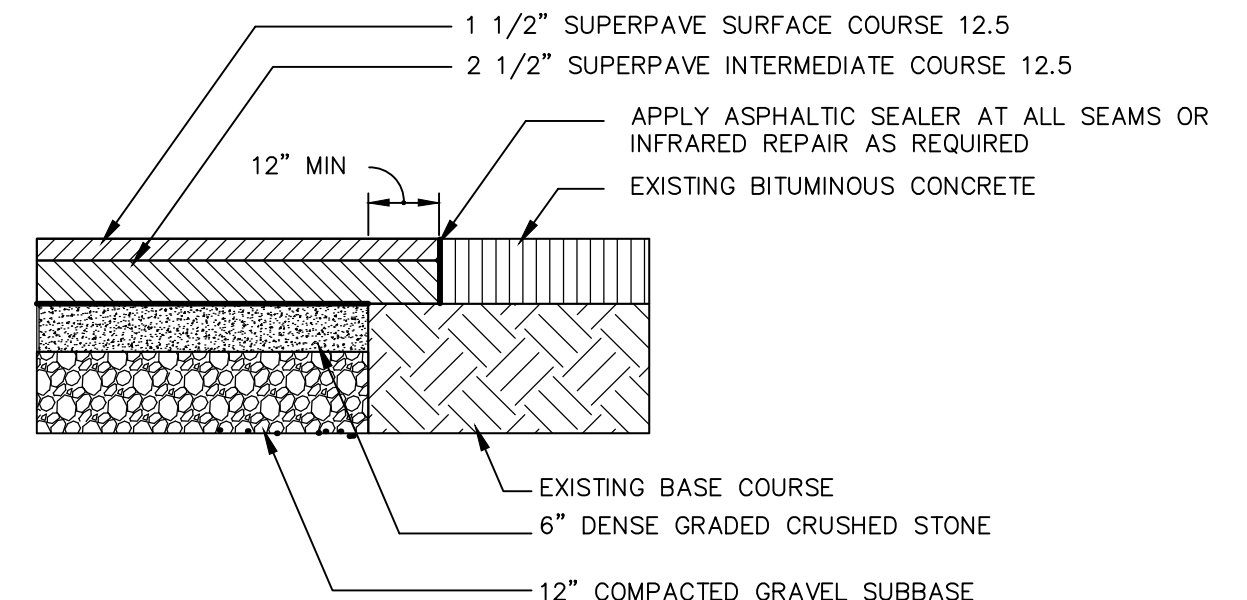
STANDARD CONCRETE SIDEWALK DETAIL
 NTS

CONCRETE SIDEWALK NOTES:

1. CONCRETE SHALL HAVE A MINIMUM COMPRESSIVE STRENGTH OF 4,000 PSI AT 28 DAYS, A MAXIMUM WATER-CEMENT RATIO OF 0.45, & 7% (±1.0%) ENTRAINMENT AIR.
2. MAXIMUM PERMITTED SLUMP FOR SIDEWALK CONCRETE IS 3". THE CONTRACTOR MAY CHOOSE TO USE WATER REDUCING ADMIXTURES TO IMPROVE WORKABILITY.
3. THE ADDITION OF SUPERFICIAL WATER TO THE SURFACE OF THE CONCRETE TO ASSIST IN FINISHING OPERATIONS SHALL NOT BE PERMITTED.
4. CONCRETE SHALL BE SEALED WITH CRETEDEFENDER OR EQUAL FOLLOWING ALL MANUFACTURER'S RECOMMENDATIONS FOR APPLICATION TIMING AND RATES.
5. UNLESS OTHERWISE DIRECTED BY THE ENGINEER, CONTRACTOR TO PROVIDE A 2'x2' SQUARE BOX OUT AROUND ALL UTILITY POLES & HYDRANTS. THE 2'x2' SQUARE SHALL BE POURED INDEPENDENTLY OF THE ADJACENT SIDEWALK WITH 3/8" ASPHALT IMPREGNATED EXPANSION JOINT ON ALL SIDES ADJUTING CONCRETE.
6. MINIMUM SIDEWALK WIDTH AT UTILITY POLES & HYDRANTS SHALL BE 32".



PARK BENCH ON CONCRETE PAD
 NOT TO SCALE

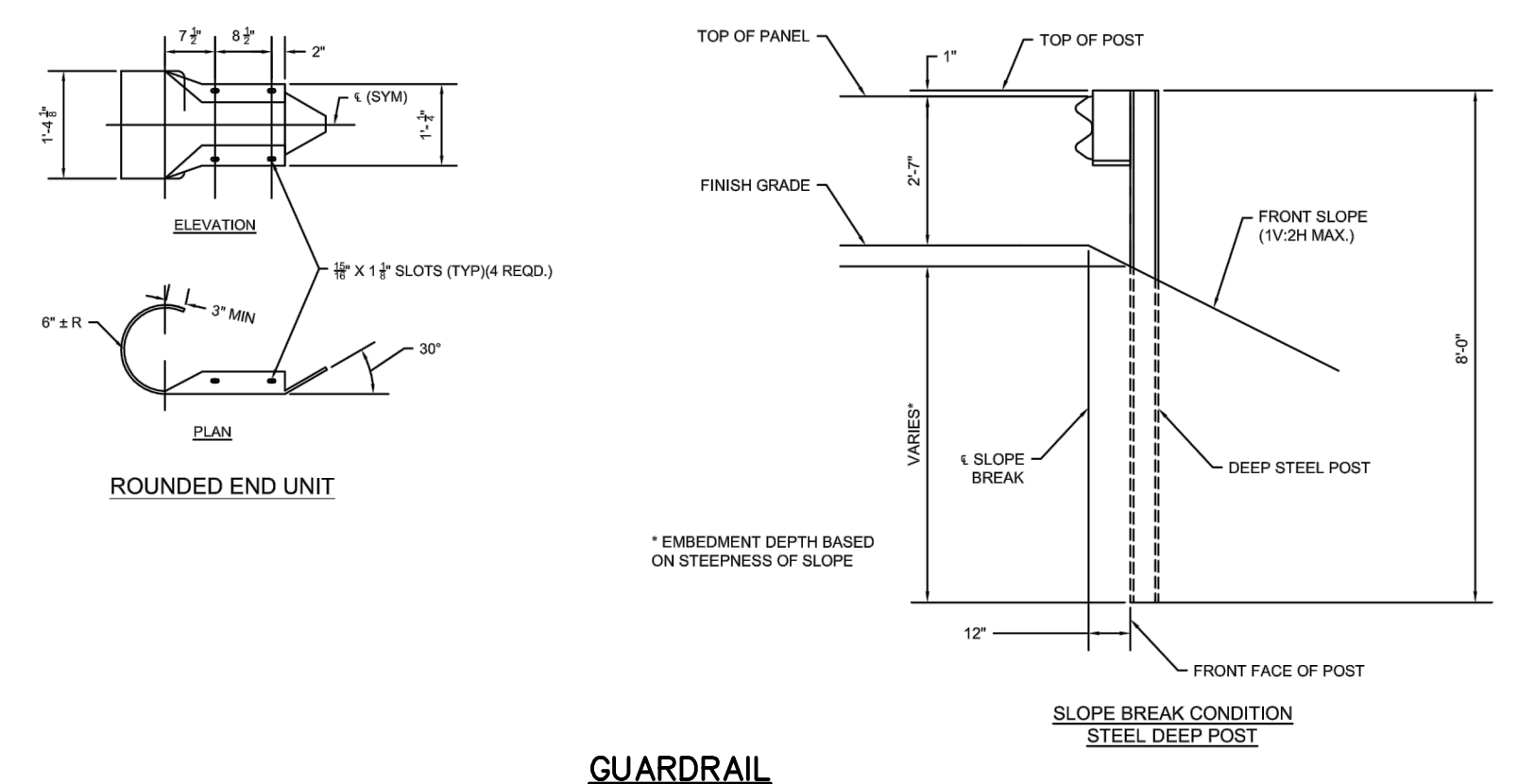


ROADWAY PAVEMENT REPAIR DETAIL
 NTS

- NOTE:
 1. ALL PAVEMENT SHALL CONFORM TO PAVEMENT SPECIFICATION INCLUDED IN THE CONTRACT DOCUMENTS.
 2. ALL SEAMS SHALL BE SAWCUT AND STRAIGHT.

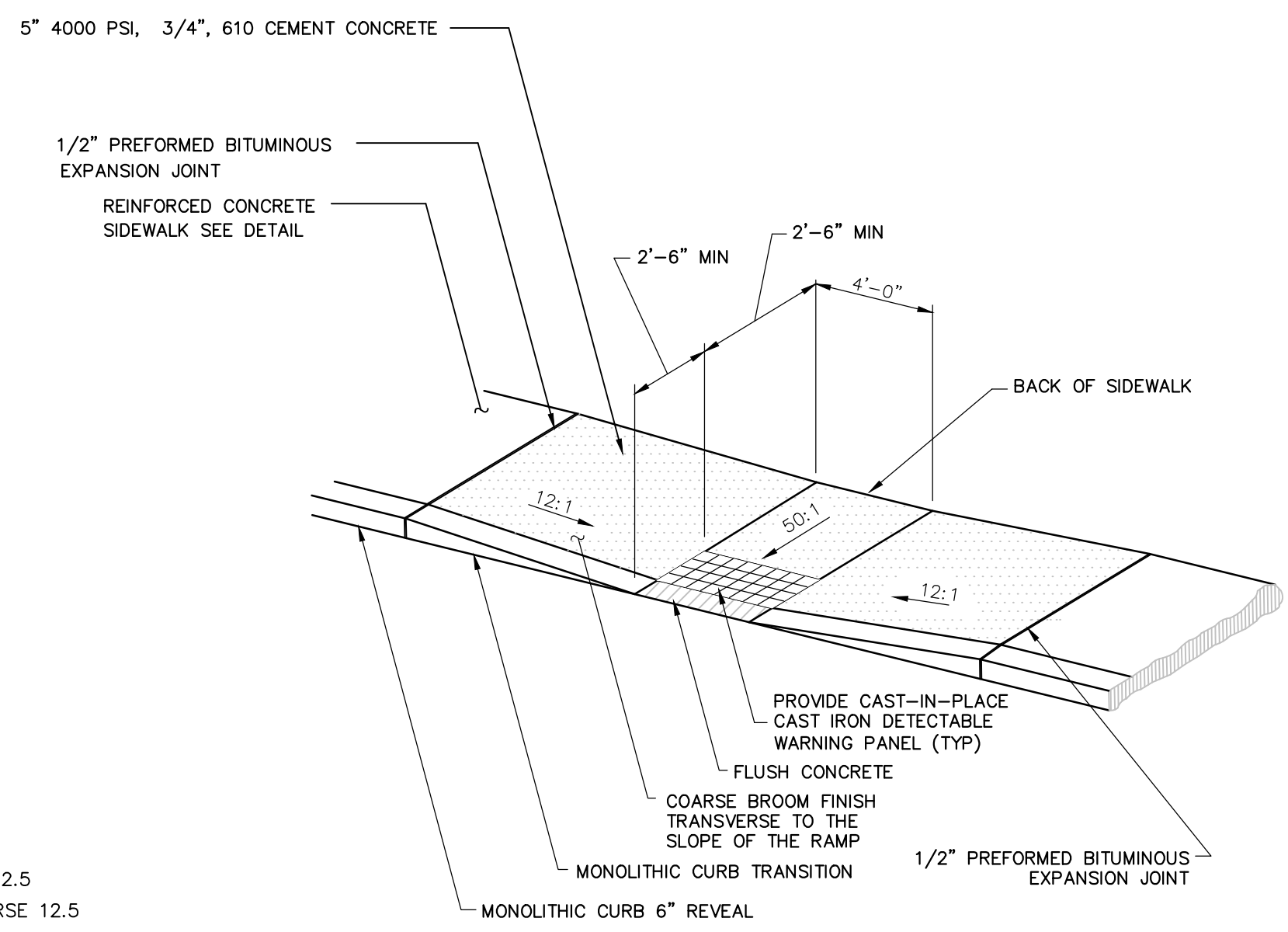
ROADWAY PROFILE GRADE	* HIGH SIDE TRANSITION LENGTH
%	ENGLISH UNITS
=0%	6'-6"
>0% TO 1%	7'-8"
>1% TO 2%	9'-0"
>2% TO 3%	11'-0"
>3% TO 4%	14'-0"
>4% TO 5%	15'-0" Max

TABLE OF HIGH SIDE TRANSITION LENGTHS FROM MASSDOT CONSTRUCTION STANDARD E 107.9.0



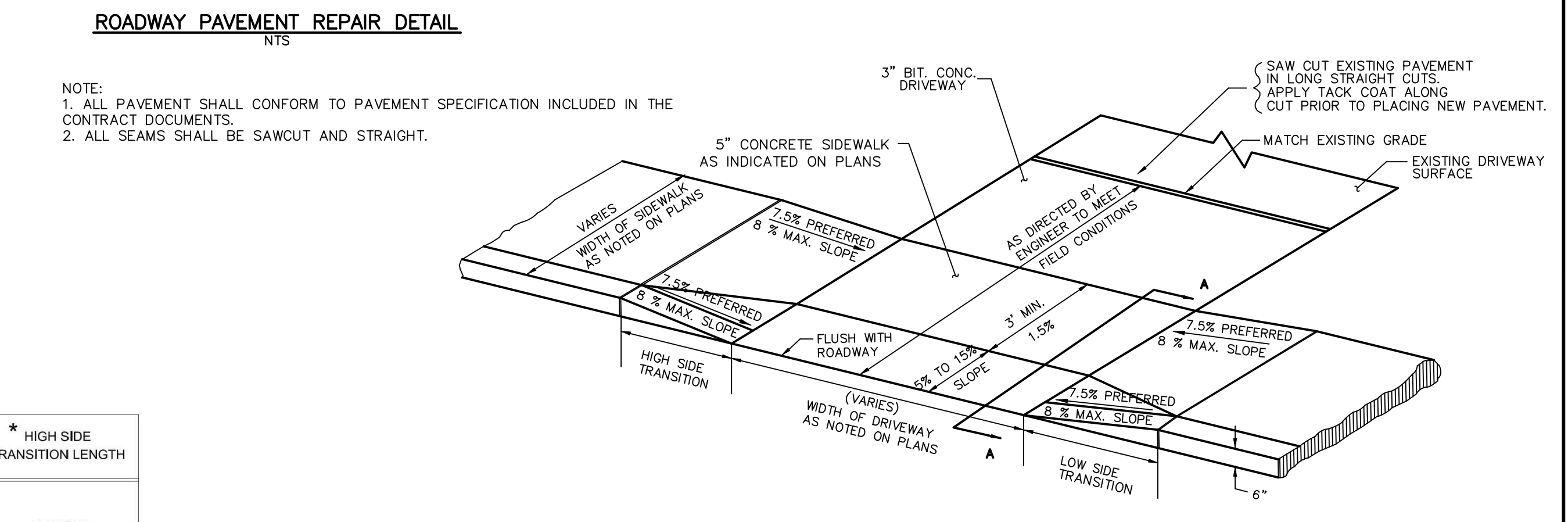
GUARDRAIL
 NOT TO SCALE

- NOTE:
 1. CONSTRUCTION SHALL CONFORM TO MASSDOT CONSTRUCTION STANDARDS UNLESS OTHERWISE DIRECTED.



TYPE B RAMP
 NTS

- NOTES:
 1. CARE SHALL BE TAKEN TO ASSURE A UNIFORM GRADE ON THE RAMP, FREE OF SAGS AND SHORT GRADE CHANGES.
 2. THE BOTTOM OF THE RAMP (GUTTER LINE) SHALL BE BEVELED AND CENTERED ON PAINTED CROSSWALK.
 3. CONSTRUCTION SHALL CONFORM TO MASSDOT CONSTRUCTION STANDARD E 107.2.1R & E 107.9.0 UNLESS OTHERWISE DIRECTED.



TYPICAL SIDEWALK & DRIVEWAY APRON
 NTS

- NOTE:
 1. CONSTRUCTION SHALL CONFORM TO MASSDOT CONSTRUCTION STANDARD E 107.7.0R & E 107.9.0 UNLESS OTHERWISE DIRECTED.

No.	Submital / Revision	App'd.	By	Date
1	MA DEP COMMENTS	PMP		12/10/2020
2	PB SUBMISSION	PMP		01/21/2021
3	PLANNER COMMENTS	PMP		03/18/2021
4	APPROVAL CONDITIONS	PMP		03/30/2021

CONSTRUCTION DETAILS

Designed By: PMP	Drawn By: ZBC/PMP	Checked By:
Issue Date: 10/29/2020	Project No: 065470	Scale: AS NOTED

File: U:\MAIN\MA\STURBRIDGE\065470_STURBRIDGE_PARKING_LOT_DESIGN.DWG, 065470 STP.DWG

