

Section

5

## Section 5: Inventory of Lands of Conservation and Recreation Interest

---

Open space and recreational resources enhance the quality of life for residents and add to the appeal of a community. Legally protected open space is important so that as a community experiences growth, there will always be natural areas for humans and wildlife. Open Space helps provide crucial protection for our freshwater resources, and serves as the backbone for the local landscape for residents and visitors alike. It can consist of wildlife habitat, forests, freshwater ponds, lakes, streams, farms, vernal pools or even a ball park or trail system.

Open spaces provide habitat for native plants and animals that cannot live in urban and suburban environments. Large tracts are particularly important to native species and can create habitat areas which are typically undisturbed (relatively pristine) areas with good wildlife movement corridors, and provide optimal cover, food, and water resources. Open space can be used to preserve unique and sensitive natural features, including but not limited to the mountains and hills, large rock formations, native landscape, and archeological and historical sites. Open spaces also provide recreational opportunities by providing suitable areas for hiking, biking, horseback riding, hunting, fishing, camping, and bird watching. Many of the things that help define the Town's character are associated with open space, including wooded areas, trail systems, and scenic vistas.

For the purposes of the Sturbridge Open Space and Recreation Plan Update, "Permanently" protected open space includes only land owned for conservation, passive recreation, watershed protection and wildlife habitat by the Town of Sturbridge, Federal and State agencies or non-profit organizations, and privately-owned land and other lands bound by

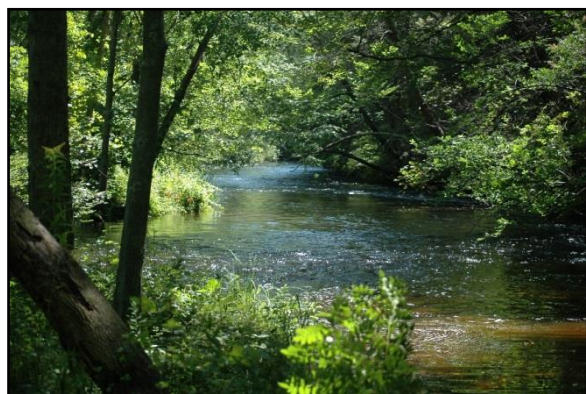
conservation easements. “Temporary” and “Limited” open space includes land covered by revocable restrictions against development or change in use. A forest land or recreational facility that is designated as Chapter Land is an example of temporarily protected open space. Limited-protection open space includes land uses such as cemeteries or ball fields that could, but are unlikely, to be redeveloped. “Unprotected” open space is land with no legal restrictions against future development.

## A. Public Lands and Facilities

With nearly 2,397 acres under its control, the Town is a major open space landowner in Sturbridge. A large percentage of these lands is under the care, custody and control of the Sturbridge Conservation Commission with 1,772.95 ± acres under its stewardship. Lands held by the Town include those for passive and active recreational uses, water protection and habitat protection purposes.

### a. Conservation Commission Managed Open Space

**The Riverlands** consists of three parcels at 51 & 55 Holland Road, and 52 Stallion Hill Road containing roughly 141 acres with potential for recreation and habitat protection. These three adjacent parcels form a continuous piece of land from Stallion Hill Road, across from the entrance to Old Sturbridge Village, to Holland Road, just south of the bridge over the Quinebaug River.



Opacum Land Trust holds a Conservation Restriction for these three properties. Placed on the properties in 2016, the Conservation Restriction is to ensure that the premises will be maintained in perpetuity for conservation purposes in a natural, scenic and undeveloped condition, and to prevent any use or change that would materially impair or interfere with its conservation and preservation values. Trails on this land are still currently under construction.

Figure 5-1: Quinebaug River. Photograph by Michele Moran

## Plimpton Community Forest

277 New Boston Road (281.25 acres)  
7 Allen Road (15.01 acres)

The Plimpton Community Forest, also known as the Plimpton Property, was purchased from the Plimpton family in 2015. From the early 1800's until the early 20<sup>th</sup> century, the Plimpton family grew fruits and vegetables and raised livestock on their 320 acre farm.<sup>1</sup> The property features a variety of valuable ecological types and wildlife habitats including streams, ponds, other wetland, upland hardwood and coniferous forest, and open and semi-open shrub land.

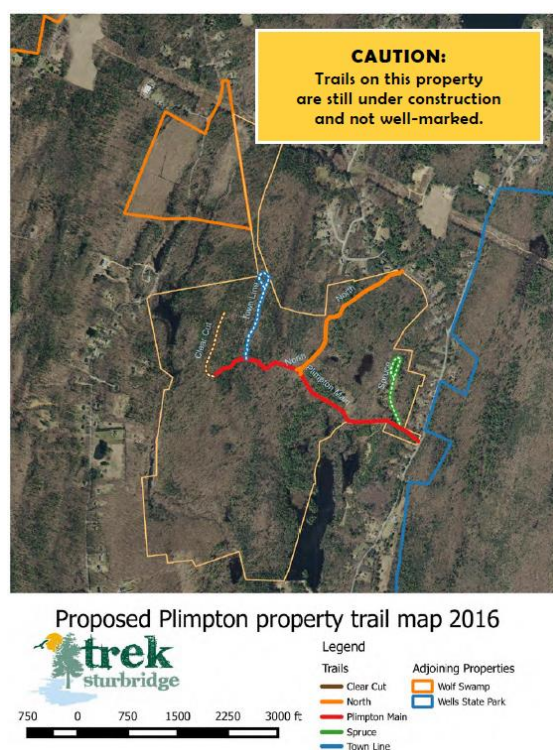


Figure 5-3: Proposed Trails at Plimpton Community Forest.

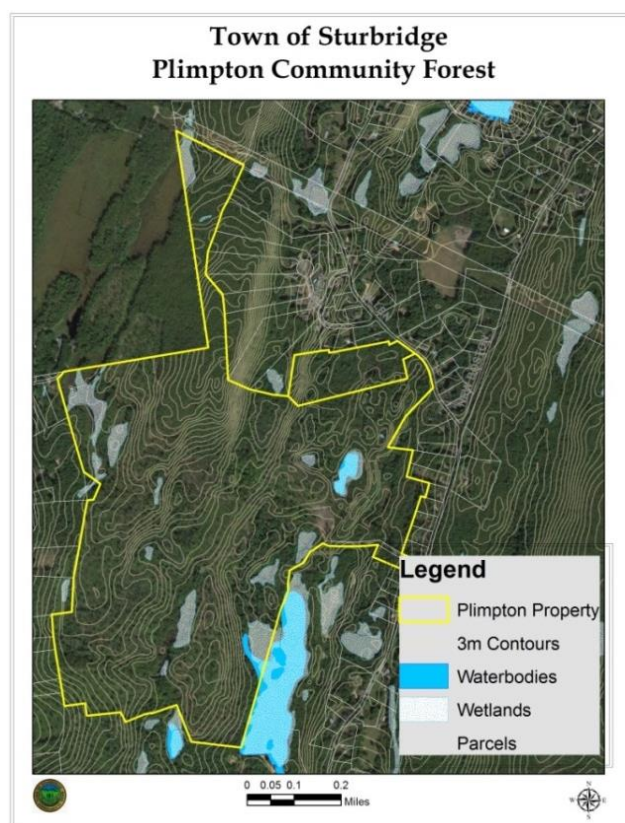


Figure 5-2: Plimpton Community Forest.

The property was acquired through various funding resources including: Community Preservation Funds, Massachusetts Department of Fish and Wildlife, US Forest Service Community Forest and Open Space grant program, and Local Acquisitions for Natural Diversity (LAND) grant program. There were also private donations towards the purchase that included The Hamilton Road & Gun Club, Bafflin Foundation, Fields Pond Foundation, and other private sources. The now retired Conservation Agent, Glenn Colburn, worked with the Trust for

Public Lands securing funds through grants and soliciting of other funds.

<sup>1</sup> The Trust for Public Lands. Plimpton Community Forest. <https://www.tpl.org/our-work/plimpton-community-forest#sm.001wjynqs165oen0qli1ol5itobds>



The 15 acres of property at 7 Allen Road have been set aside for active recreation purposes. Through receipt of funding of the LAND grant program for 277 New Boston Road, the property is permanently protected as Open Space. The LAND grant agreement prohibits the conversion of the property from conservation and recreational uses; it also requires universal access to property for the public. The Conservation Commission is the entity responsible for management of this property; as part of this responsibility, they will refine a Land Management Plan and Forest Stewardship Plan for the property.



Figure 5-4: Marsh at Plimpton Community Forest. Photograph by Pete Westover, Conservation Works. Prepared for Baseline Document Report Plimpton Property.

### Trails

As of spring 2018, The Sturbridge Trails Committee has been using GPS to map the trails network and track accessibility of each trail. The Trails Committee will work in cooperation with the Conservation Commission to prepare a Notice of Intent for installation of several bridges throughout the property. Currently there are 4.5 miles of proposed trails; the hope and intention is to increase that to roughly 20 miles of trails. In addition to traditional hiking trails, the plans include 15 miles of single track mountain biking trails. Horseback riding, cross-country skiing, and snowshoeing are also permitted

on designated trails. Hunting is not permitted within a 1,000 foot buffer zone from the parcel on Allen Road. Allowable uses on the property will be revisited after two years and again at least every five years by the Conservation Commission. In May 2016 the Conservation Department partnered with Opacum Land Trust to lead a walk for the public on the newly acquired land. Over 40 residents attended and walked the logging roads with then Conservation Agent Glenn Colburn and Edward Hood, Executive Director of Opacum Land Trust. The hands on experience gave the community an opportunity to explore their new forest land.

### Parking

There is parking for 4-6 cars available at 277 New Boston Road.



Figure 5-5: Plimpton Community Forest. Photograph by Pete Westover, Conservation Works. Prepared for Baseline Document Report Plimpton Property.

## Land Management

Opacum Land Trust holds the Conservation Restriction on this property. Top priority goals for Plimpton Community Forest include preserving agricultural and forestry land, which are important components of the Town's character, providing opportunities for local residents, individuals and families to become more involved in Open Space through trails and conservation lands, and expand outdoor passive recreation opportunities for all Sturbridge residents, regardless of age or ability. The Plimpton Community Forest provides connectivity with other Open Space in Town, linking 2,704 acres of continuous conservation land and open space. Connectivity includes Wells State Park, Wolf Swamp Wildlife Management Area, Hamilton Road and Gun Club (in Chapter Land), and Opacum Woods. This linkage supports the long term ecological health of rare and endangered species and also creates a landscape resilient to climate change, significant storms, and stormwater. It also protects significant water resources, ecological variation and integrity, and a range of pre-historic and historic cultural resources including stone walls, a stone foundation, and other features of a historic farm homestead.

The property experienced timber harvesting before its acquisition by the Town. Harvesting on the property has and will follow a Forest Management Plan, using woods roads that are present throughout the property and log landings that are found in several locations. The property now has a diverse mix of early successional habitat growing up to sprout hardwoods, white pine stands, mixed hardwood-hemlock-white pine stands, wetlands, ponds, and streams with wooded flood plains. The property will eventually provide timber revenue to the Town.



Figure 5-6: Logged area, Plimpton Community Forest. Photograph by Pete Westover, Conservation Works. Prepared for Baseline Document Report Plimpton Property.

One of the challenges of this Forest Management Plan will be creating a balance between the creation, use, and maintenance of a pedestrian trail system with the enhancement of wildlife habitat and improvement of timber quality for sustainable harvesting. Forest health can be inhibited by invasive species, but luckily so far even with the heavy harvesting on site there are very few invasive species that have taken hold. Deer also can inhibit species growth because they browse on mostly low growing vegetation and no longer have many predators to control the population.

### **Long Pond Conservation Area**

*45 Champeaux Road (59.47 acres)*

*55 Champeaux Road (19.94 acres)*

*197 Brookfield Road (.16 acres)*

Long Pond Conservation Area, located at the northern edge of Long Pond, contributes to providing access to Long Pond and protecting the delicate natural resource area. The property at 55 Champeaux Road was taken by eminent domain by the Town for the purpose of open space and provides access to Long Pond. The parcel 45 Champeaux Road was transferred to the Conservation Commission for conservation purposes, and the parcel at 197 Brookfield Road was a land acquisition. This small parcel provides access to the area. The entire Long Pond protected area totals nearly 80 acres.

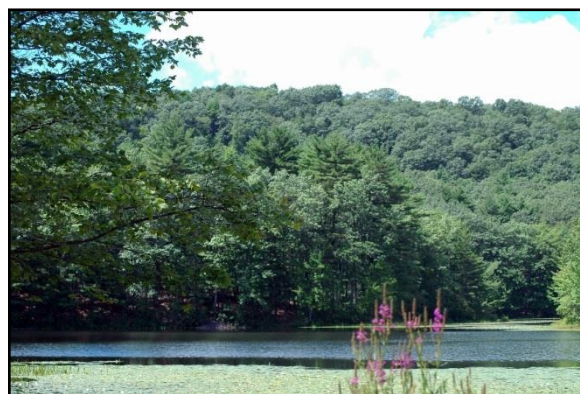


Figure 5-7: Long Pond. Photograph by Michele Moran

### **Leadmine Mountain Conservation Land**

*10 Shattuck Road (813.97 acres)*

*36 Shattuck Road (12.4 acres)*

*127A Stallion Hill Road (72.06 acres)*

*197 Leadmine Road (96 acres)*

In 2006 the Town of Sturbridge, in cooperation with the MA Division of Fisheries and Wildlife, purchased over 800 acres of land from Old Sturbridge Village using Community Preservation Act Funds. The property is known in Sturbridge as the “Leadmine Mountain Conservation Land”, “Old Sturbridge Village Conservation Land”, and also, a portion is known as “Camp Robinson Crusoe”, an historic co-educational summer camp that was founded in 1928 by Josh Lieberman and operated from 1932 to 1970. The property is ecologically, geologically, and hydrologically unique and diverse. It contains the Leadmine Mountain Range, Hamant Brook and several other perennial and intermittent streams, ponds, vernal pools, and wetlands.

In 2002 the Town acquired the property known as the Stallion Hill Conservation Land. Acquisition was made possible with the use of the Lucent Gift Fund from the Board of Selectmen to the Conservation Commission and with funds from a Conservation Services Self-Help Grant for conservation, open space and passive recreation purposes. The land will be held in perpetuity as conservation land under the care, custody, and control of the Conservation Commission. Upon acquisition of the property, a Land Management Plan was prepared by the Conservation Commission. The Land Management Plan describes site conditions as relatively flat with rolling woodlands, and as having two streams, one perennial, one intermittent, that flow through the property. Other features identified on the property are bordering vegetated wetlands, two potential vernal pools. Vegetation is described as primarily



hardwood with Maple, Oak and White Pine, and there is a large amount of Mountain Laurel. Several unique geological rock outcroppings exist on the site as well as several glacial erratic boulders.

197 Leadmine Road was acquired by the Conservation Commission through tax taking in late 2000. It directly abuts the Leadmine Mountain Conservation Land and is across the street from the Heins Farm Conservation Land. Trails on this property connect to both the Heins Farm Conservation Land and Leadmine Mountain Conservation Land. The designated parking area for the Heins Farm Conservation Land is located on this property. This property is being actively managed as part of the Leadmine Mountain Forest Stewardship Plan. The Massachusetts Division of Fisheries and Wildlife holds the Conservation Restriction on 197 Leadmine Road (10 Shattuck Road, 36 Shattuck Road and 127A Stallion Hill Road do not currently have Conservation Restrictions). Due to the Conservation Restriction on the property it is open to “in season” hunting, fishing and year round passive recreational use. It is described as a unique habitat and natural features on the property as containing a mixed-hardwood-Hemlock-White Pine forest. The topography is a diverse geology containing a mixture of bedrock ridges interspersed with valleys containing wetlands, intermittent streams, and sphagnum swales which support significant diversity in this area. The area provides a large, relatively undeveloped and fragmented forest habitat.

Beginning in 2017, a multi-dam removal and habitat restoration project was undertaken at Hamant Brook (See Section 4). The dam removal work was completed in early 2018, while monitoring will continue through the year. The Trails Committee hosted their annual Earth Day Clean Up in 2018 at Leadmine Mountain Conservation Area, working on restorative landscaping plantings, trail maintenance, and general clean-up of the area after the dam removal.



Figure 5-8: Hamant Brook Habitat Restoration at the dam removal project area.



Figure 5-9: Site of one of the dam removals with restorative plantings protected from animals by wire structures.

## Parking

There are three parking areas that provide access to Leadmine Mountain Conservation Area. The parking lot at 197 Leadmine Road allows access to both Leadmine Mountain Trails and the Heins Farm Conservation Land Trails. The parking area allows for 12 cars, including 2 designated handicapped spots. There is also parking at 10 Shattuck Road and on 10 Old Sturbridge Village Road.

## Trails

This property contains a significant number of trails, historic cart paths and logging/skid roads. Beginning in June of 2008, an Order of Conditions was issued for work installing several bog bridges and footbridges. Since that time the Order of Conditions has been amended several times to include additional bridge repairs and replacements, culvert replacements, trail relocations and a handicapped accessible parking area. In April of 2009, the Town and the Grand Trunk Trail Blazers received a \$5,000 grant from the American Hiking Society to improve trails at the Leadmine Mountain Conservation Area and created a 1.8-mile Handicapped Accessible trail. Work implementing and maintaining the trail improvements has continued over past years in cooperation with associated Town committees.

The Town successfully worked with Old Sturbridge Village to create a trail easement for a handicapped accessible trail and also for the parking area off Old Sturbridge Village Road. The Parking Area and Trail Easements have allowed the Town to designate a handicapped accessible access to the Leadmine Mountain Trails. The Old Growth Trail is 200 yards long. It is a short, universally accessible loop off the Arbutus Park Trail, 200 feet from the 10 Old Sturbridge Road Trailhead. This is an ADA accessible trail.



Figure 5-10: Parking Lot at 197 Leadmine Road.



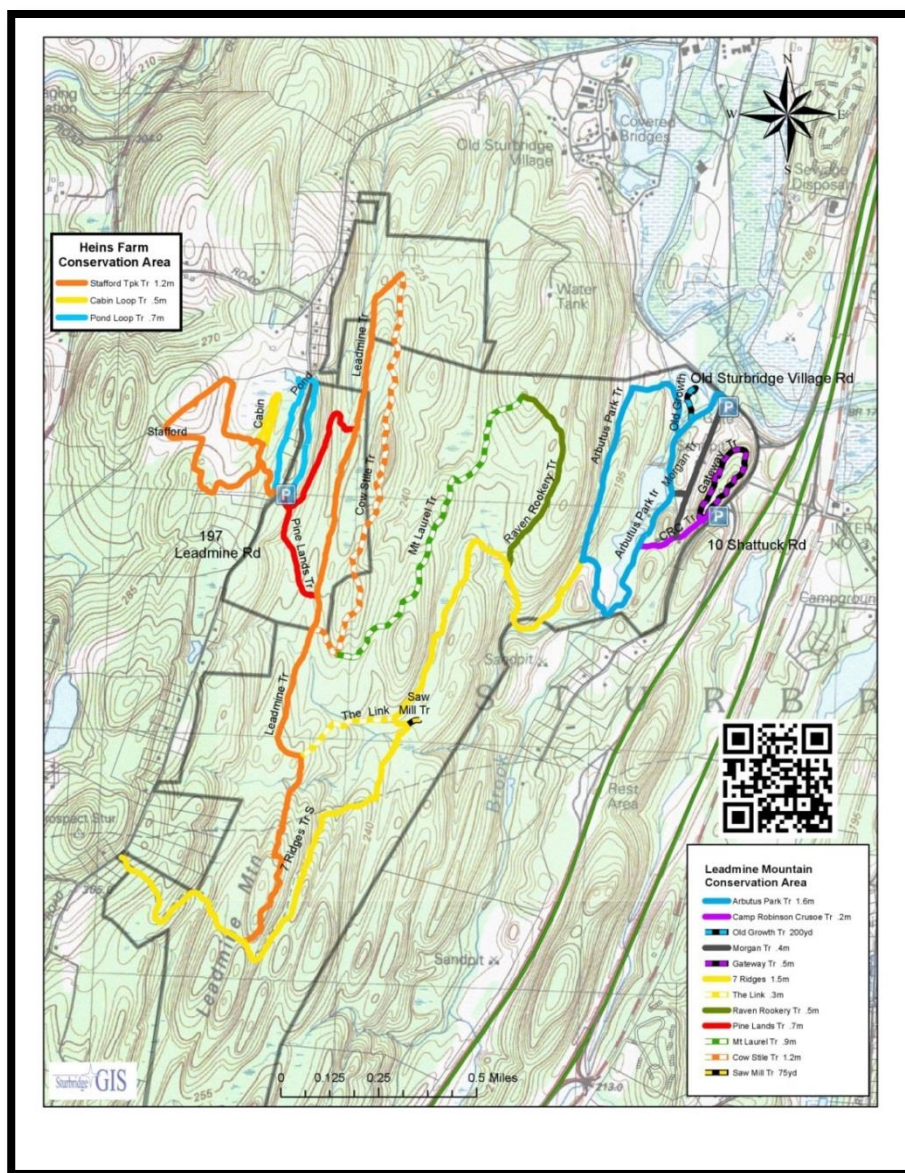


Figure 5-11: Leadmine Mountain Conservation Area and Heins Farm Trails. Sturbridge Trails Committee.

### Forest Stewardship Plan

In early 2010, the Department of Conservation and Recreation approved the Town's Conservation Commission's Forest Stewardship Plan for the Leadmine Mountain Conservation Land. The plan, a requirement of the Conservation Restriction, takes into consideration the forest resources on the property and outlines a 10-year management plan. The current forest consists of mature upland forest, forested wetlands, and the newly restored stream. In general, the forest contains mature mixed hardwood and softwood trees that have not been managed in some time. Many areas contain an understory featuring moderate densities of understory

shrubs which have negative impacts on establishing tree regeneration. Through the course of the Stewardship Plan, new tree regeneration will be established through harvesting activities that will enhance wildlife habitat conditions, reduce the number of invasive species and the long term productivity for timber products.

A few of the goals of the Forest Stewardship Plan include promoting interior forest characteristics to benefit to wildlife, managing timber for a healthy forest while being conscious of invasive species, and allowing for creation of diverse habitat, such as early successional grass and shrub habitat.

#### Forest Cutting Plan Development

With approval of the Forest Stewardship Plan, the Conservation Commission has been developing the first Forest Cutting Plan on the property. This plan currently includes taking advantage of old cart paths through the property on an area 25 acres in size. It is important that the Forest Stewardship Plan be designed to manage activities that occur on the property. Upon review of the first version of the Forest Cutting Plan for the property, the State Forester suggested making changes to better match the goals of the Forest Stewardship Plan. The Conservation Commission is currently in the process of making these adjustments to the plan and then will resubmit it to the State Forester. When the state accepts the plan, it will be implemented.

#### **Heins Farm Conservation Land**

*200 Leadmine Road (85 acres)*

The 85 acre Heins Conservation Land was acquired by the Town of Sturbridge in 2006 and put under the care, custody and control of the Sturbridge Conservation Commission. The land was acquired by the town using Open Space funding from the Community Preservation Act. The property was originally part of the neighboring Heins Family Farm (which is private property). The Heins Conservation Land is of great cultural and historic significance to Sturbridge. Passing through the property is the historic Stafford Turnpike, for which the 1.2 mile "Stafford Turnpike" trail is named. There is a historic marker on the site, which documents this important town landmark.

Each year the Conservation Department sponsors a Winter Tree Scavenger Hunt, where people and/or groups of people are encouraged to go out and decorate a tree along the trails at Heins Farm. It is a unique way to get people outdoors and spread creativity during the winter months, with community members and Town employees contributing to the fun.

## Parking

There is a parking area located at 197 Leadmine Road for visitors of the Heins Conservation Land. The parking area is located across the street from the Heins Conservation Land, at the trailhead for the Leadmine Mountain Conservation Area.

## Trails

The Worcester-Stafford Turnpike, a toll road used by stagecoaches in the 1800's, passes through this property and is often the destination for historic interpretive walks. Originally the property had several miles of trails formerly used as snowmobile and ATV trails. Many of these trails were not built for sustainability and were never intended for use by walkers, joggers, equestrians and wheelchairs. A plan was developed to close some trails, reroute others, and build new sections to provide users and the town with miles of enjoyable and easily maintained trails. The trail average width is 6' and has either a stone dust or natural surface, except where it goes through pastures. One of the trails is an ADA Rule Compliant Trail and another is a Universally Accessible Trail. In addition to the Stafford Turnpike Trail, there are two additional trails on the property, the .5 mile Cabin Loop Trail and the .7 mile Pond View Loop Trail. All of the trails on this property have been constructed by volunteers, with donated materials, labor and funds. The trail system and trail maintenance is a testament to the hard work of the Trails Committee members and other volunteers. Prior to dedication of the Heins Farm Trails, the total amount of materials donated and volunteer labor was approximately \$35,000. Since then, that much or more has been donated to improve the trails further and do boundary marking and signage.

Trail and bridge work on the property has been done by local businesses and volunteers including the carpentry class at Tantasqua Regional High School. Funding and materials for the project were donated, provided by the town, or acquired with a grant from the American Hiking Society & Nature Valley Co. As of the date of this plan, one of the newest installations will be an educational display on the effects of nature on man-made trash.

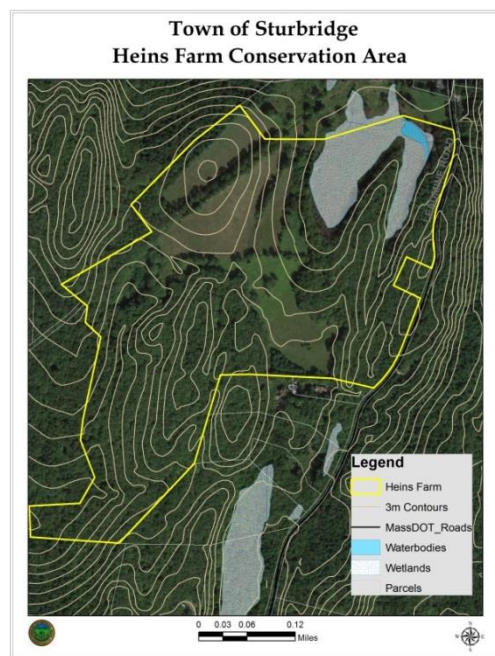


Figure 5-12: Heins Farm Conservation Area.



Figure 5-13: September 2009 and March 2010. Prior to and post brush hogging.



## Land Management

In 2008 the Conservation Department applied for and received funds from the USDA Natural Resource Conservation Service for habitat restoration work at the Heins Conservation Land. The funds were for a 6.5 acre portion of the property that was an old field that became overgrown with invasive species like Japanese Barberry, Oriental Bittersweet, and Honeysuckle. In addition the field was becoming established with White Pine and other woody vegetation. A total amount of \$16,176 was received through the Wildlife Habitat Incentives Program (WHIP) to be used over the course of an 8-year period for tree removal, brush hogging and spraying for invasive species. The goal of this plan was to create what is called “early successional habitat” on the property, which is grassland and shrub land habitat.



Figure 5-14: Heins Farm Pond Loop ~ Thomas Chamberland ~ Photo Contest Winner

**47 Finlay Road***34.14 acres*

Acquired by the Conservation Commission in 2000, 47 Finlay Road was formerly managed and under the control of the Board of Selectmen. The property was originally acquired by the Town through tax taking in 1994. The property is adjacent to property owned by Mass Wildlife, and is also in close proximity to Leadmine Conservation Area.

In October of 2005, the Conservation Commission obtained an Urban Forest Planning and Education Grant from the Massachusetts Department of Conservation and Recreation. The grant was used to fund the establishment of a Forest Stewardship Plan on the property. The Conservation Commission had planned to prepare and complete a Forest Cutting Plan on the property. However to date a proposed cut on the site would not generate enough income to pay for the cost of the cut. Until timber markets improve it is likely no Forest Cutting Plan will be implemented on the site, and it will be maintained and preserved as Open Space.

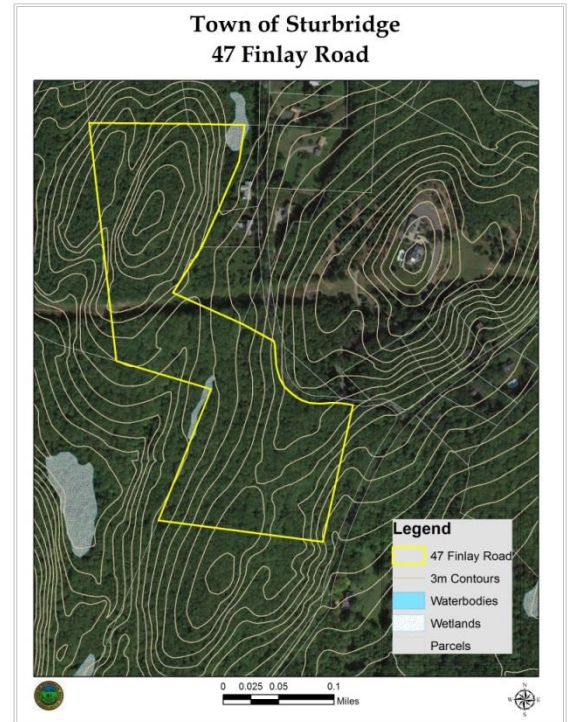


Figure 5-15: 47 Finlay Road.

## Shepard Parcel

*#80 Route 15 (8.52 acres)*

This property was purchased by the Town of Sturbridge with Community Preservation Act Funds in December of 2004. The property was purchased “for open space conservation purposes, to be managed and controlled by the Conservation Commission.” In 2006 discussions began exploring whether the land could be utilized for the purposes of recreation playing fields. Plans for installation of recreational fields were halted when it was discovered that the language of the deed did not support this type of development on the site.

In 2016 the Opacum Land Trust placed a Conservation Restriction on the property. Its purpose is to assure that the Premises be maintained in perpetuity for conservation purposes, in a natural, scenic, and undeveloped condition, and to prevent any use or change that would materially impair or interfere with its conservation and preservation values. Some of the conservation values mentioned includes wildlife habitat preservation, passive recreation, and public access to the Quinebaug River.

The Conservation Restriction allows for the establishment of a parking lot (no more than 20 vehicles or 10,000 square feet), construction of trails, vegetation management, and forestry cutting as a few examples of permitted uses. If timber harvesting or forest clearing is to take place, a Forest Management Plan will need to be prepared and reviewed by a state forester to be sure that it echoes the desired protection and values of the property. A Forestry Cutting Plan would need to be reviewed by the Conservation Commission before proceeding. With the Conservation Restriction just being placed in 2016, at this time plans are still being formed for Shepard Parcel. With the proximity to the Quinebaug River and historic cart paths and stone walls, this property is a beautiful part of Open Space in Sturbridge.



Figure 5-16: Shepard Parcel



### Brook Hill Open Space Parcel 305 Brookfield Road (24.19 acres)

When the Brook Hill Road subdivision was built, the developer desired to create an attractive residential neighborhood while preserving and protecting the natural character of the land. This property was acquired by the Conservation Commission in 2005 for One Dollar (\$1.00) from Brook Hill Development, LLC. The property was acquired as Open Space Land as part of the Brook Hill Subdivision. The property is presently land locked and contains a flowage easement. There is no active open space management taking place on this parcel. It is a wooded parcel that abuts Tantasqua High School.

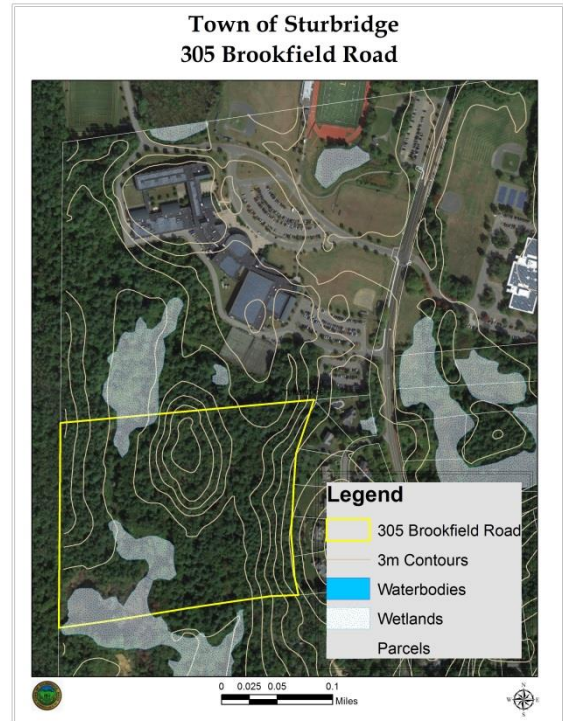


Figure 5-17: Brook Hill Open Space Parcel.

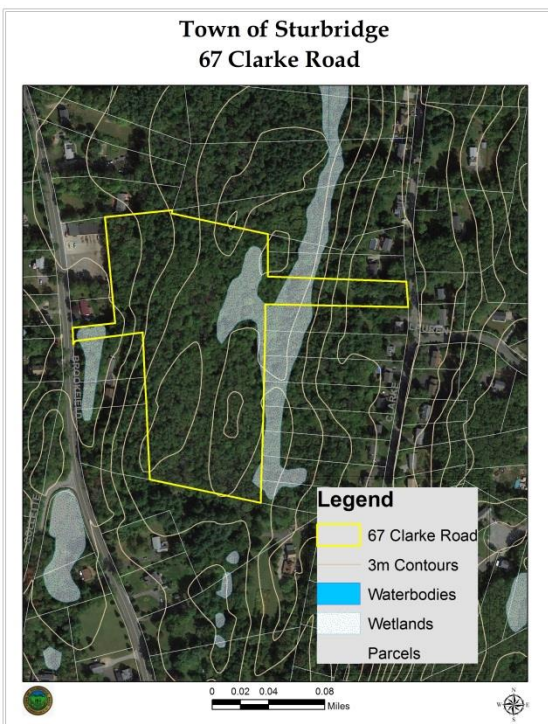


Figure 5-18: 67 Clarke Hill Road

### 67 Clark Road 13.67 acres

In 2002 the Conservation Commission acquired this property for One Hundred Dollars (\$100.00) from CMG Development Corp. The property is an undeveloped parcel of open space which receives drainage from surrounding lots in the subdivision (per easement) The wetlands through this property also pick up some water from Draper Woods subdivision, from catch basins off Brookfield Road, and eventually flow to the Quinebaug River. Keeping this area protected Open Space will benefit wildlife habitat and protect water quality.

**Stony Brook Drive***Numbers 20, 25, 26, 27, 28, 30**8.69 acres total*

Stony Brook Drive was purchased by the Town of Sturbridge in 2014 from Rehabilitative Resources, Inc. for one hundred dollars (\$100). This property is part of an unfinished subdivision that dated back to 1967. The property begins at the dead end of Stony Brook Drive with a right of way onto Cricket Drive. In the middle of the largest lot is where Stony Brook, a perennial stream, runs. This stream connects into various wetlands and is a tributary to the Quinebaug River. This area is also in proximity to the Herve & Mary Jane Gaumond Memorial Sanctuary. It is protected as Open Space, benefiting the waterways, wildlife, and the residents that live in this area.

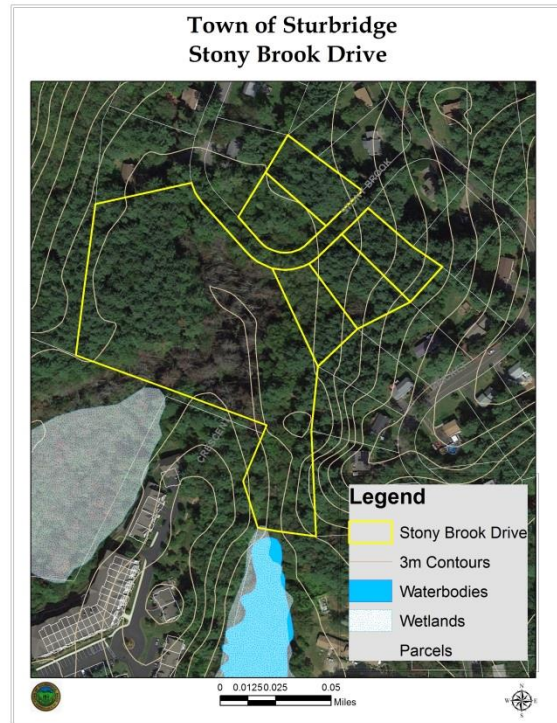


Figure 5-19: Stony Brook Drive

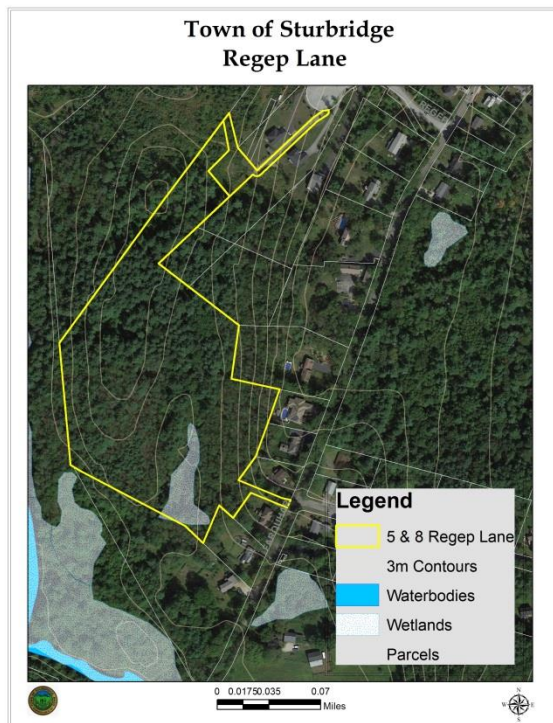


Figure 5-20: Regep Lane

**Regep Lane***8 Regep (13.05 acres)**5 Regep (.59 acres)*

The smaller of the two lots on Regep Lane is a detention basin for the subdivision; it holds an easement for this purpose. The remainder of the land is protected Open Space for conservation purposes. The Town purchased the land from The Spaho Corporation in 2013 for One Dollar (\$1). This parcel has wetland area and potential vernal pools. It abuts Hobbs Brook (of which the land is owned by the Army Corp of Engineers), which is a tributary of the Quinebaug River.



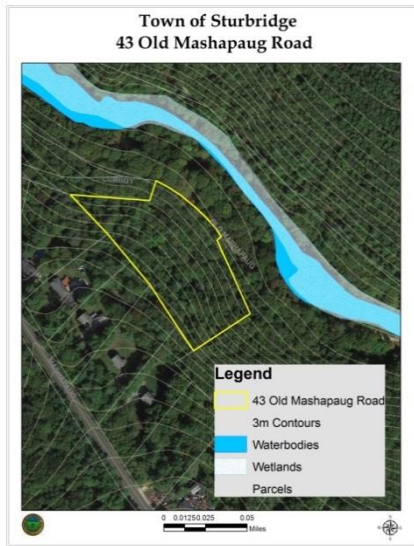


Figure 5-21: Old Mashapaug Road

### 43 Old Mashapaug Road

2.91 acres

This nearly three acre lot is small but is situated on a hillside that overlooks the Quinebaug River and land owned by the Army Corp of Engineers. Acquisition of this parcel protects the scenic view from the Grand Trunk Trail bikeway. The parcel was purchased from Clarence “Buddy” Soper, of Sturbridge, by the Town acting through the Conservation Commission for the sum of One Dollar (\$1).

### 32 Warren Road

19.25 acres

In June 2015 this parcel was accepted into the care, custody and control of the Conservation Commission by tax taking. This large parcel abuts US Army Corp of Engineers land, creating a protected tributary of Long Pond.

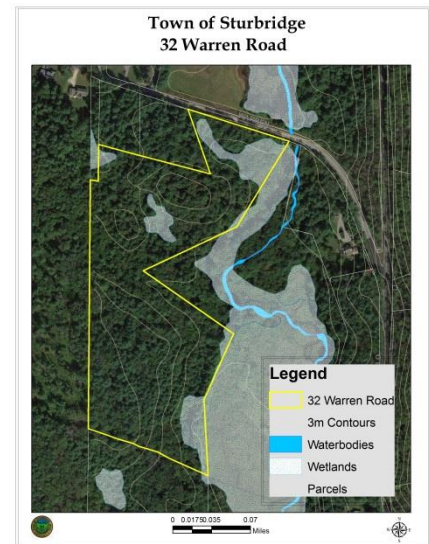


Figure 5-22: Warren Road



Figure 5-23: Fairview Park Road

### 77 Fairview Road

.51 acres

This parcel was purchased by the Town acting through the Conservation Commission for conservation purposes from Arthur Mitchell of Sturbridge for One Dollar (\$1) in 2003. There is an intermittent stream that runs through the property, as well as a pipeline. Although small, conserving this land as Open Space provides some water storage capacity and provides refuge for wildlife in a heavily developed area.



## **b. State Owned and Managed Open Space**

Another large landholder is the Division of Fisheries and Wildlife (DFW), with over 1,500 acres of protected open space under its control within the Town of Sturbridge. While the DFW controls many small parcels scattered throughout town, they also have several sizeable wildlife management areas located in the Town of Sturbridge and adjoining communities.

These include the following:

### Breakneck Brook Wildlife Management Area

This Wildlife Management Area (WMA) is located both in the Town of Sturbridge and in the Town of Southbridge. The total acreage is 1,233 acres with 686.8 acres located within the Town of Sturbridge. The land is generally rough terrain including ridges, valleys and hills. There is parking access off Breakneck Road on the western side of the area. Certain hunting activities are permitted in season.

**Vegetation:** Mixed hardwood and conifer forest interspersed with a few wooded swamps and small areas of open marsh.

**Water:** Breakneck Brook bisects the area and is stocked with trout. Beavers may impound portions of this brook and a smaller brook in the western sector of the area. This WMA in the vicinity of Breakneck Brook helps protect and maintain water quality of the Quinebaug River, into which Breakneck Brook flows.

**Wildlife:** Grouse, deer, woodcock, raccoon, gray squirrel, turkey, aquatic fur-bearers and numerous nongame species. This area is stocked with pheasant.

### Leadmine Wildlife Management Area

Located in the Towns of Sturbridge and Brimfield, this area consists of five parcels totaling 826.35 acres (527.33 acres within the Town of Sturbridge) of generally rough terrain and moderately sloped ridge and hilltop. This area is located on the border between the Connecticut Valley and Central Wildlife Districts. The original Wildlife Management Area consisted of two parcels totaling 640 acres. However in 2009, the Division acquired an additional 186.35 acres within the Town of Sturbridge.

The property was acquired for the purpose of permanent protection, management and enhancement of wildlife and wildlife habitat and to allow compatible wildlife associated recreational uses. It abuts the Tantiusques Site on Leadmine Road.

Vegetation: Mixed hardwood forest with some scattered hemlock and white pine.

Water: This area is near Leadmine Pond, which is stocked with trout. There have also been largemouth bass and chain pickerel in Leadmine Brook. There is rough, limited access to this pond.

Wildlife: Grouse, deer, bear, raccoon, gray squirrel, turkey, coyote, grouse and numerous nongame species. This area is stocked with pheasant.

#### McKinstry Brook Wildlife Management Area

This 347 acre Wildlife Management Area is located within the Towns of Sturbridge (148.29 acres) and Southbridge.

Vegetation: The forest is mostly comprised of mixed hardwoods. In low areas, along the brook are also stands of hemlock and alder thickets.

Water: McKinstry Brook, a cold water brook containing native trout, bisects the area and joins the Quinebaug River. There are several perennial streams flowing from the west that feed the brook. Some of these streams are subject to impoundment from beavers. In the north portion of the property, there are also wooded wetlands.

Wildlife: Beaver, mink, river otter, muskrat, coyote, deer, fisher, ruffed grouse, turkey and numerous non-game species. Pheasants are not stocked within this area.

#### Wolf Swamp Wildlife Management Area

The majority of this 1241 acre Wildlife Management Area is located within the Town of Brookfield, but a substantial amount, 222.86 acres, is located within the Town of Sturbridge.<sup>2</sup> The Division of Fisheries and Wildlife website contains little information on this area with the exception of a map and total acreage. However, the Town of Brookfield 2010 Open Space Plan contains additional information about this area, including the waterways the WMA protects and references to a Native American archeological site.<sup>3</sup>

Another large landholder is the Department of Conservation and Recreation (DCR), with over 1600 acres of protected open space under its control within the Town of Sturbridge. The most well-known DCR managed property is Wells State Forest. Streeter Point Recreation Area was formerly managed by DCR but no longer operates the area; the facility is closed.

---

<sup>2</sup> <https://www.mass-trails.org/towns/Sturbridge/wolfswampwildlifemanagementarea.html>

<sup>3</sup> [https://www.brookfieldma.us/sites/brookfieldma/files/uploads/brookfield\\_open\\_space\\_recreation\\_plan.pdf](https://www.brookfieldma.us/sites/brookfieldma/files/uploads/brookfield_open_space_recreation_plan.pdf)

Wells State Park - Wells State Park is a popular 1,600-acre woodland park owned by the Commonwealth of Massachusetts Department of Natural Resources and managed by the Department of Conservation & Recreation (DRC). There are sixty campsites located in the Park. The park provides the perfect setting for outdoor recreational uses and the two principal activities are camping and hiking. In addition, Walker Pond provides a peaceful setting for fishing, canoeing, and swimming. The swimming beach is for campers' use only. During the summer, Wells has an interpretive program available which provides guided walks, hikes, recreational activities and evening campfire programs. More than ten miles of trails cross the property, which are for hiking only – including “Heart Healthy” trails to promote an easy to moderate healthy exercise routine, ADA Accessible trails, and traditional hiking trails; off-road vehicles may not be used on any of the trails. Equestrian use is permitted within the park. A popular route leads to the scenic vista at Carpenter Rocks from which the eastern section and Walker Pond can be viewed. The main entrance to the Park is off Route 49; there is an entrance fee to the park, which is \$5 for Massachusetts Residents and \$10 for non-residents.

### c. Federally Owned and Managed Open Space

33 Champeaux Road – Known by some as the Champeaux Road fishing area, this is a handicapped accessible fishing area near the northern end of the reservoir along Champeaux Road. Facilities include a parking area, and two accessible fishing platforms on the shoreline of Long Pond. There is no fee for the use of this property.

East Brimfield Reservoir – Managed by the US Army Corps of Engineers, the East Brimfield Dam is situated on the Quinebaug River in Fiskdale. The project is located within the towns of Sturbridge, Brimfield, and Holland with numerous recreational sites around this area, including the Champeaux Road Fishing Area, Long Pond Boat Launch (on the north side of Route 20), East Brimfield Dam (at Riverview Avenue) and Streeter Point Recreation Area.



Figure 5-24:  
Evan Simpson ~ Hobbs Brook Wildlife ~ Photo Contest Winner



Hobbs Brook – Owned and managed by the US Army Corps of Engineers, Hobbs Brook has several points of access. There is parking near the Town Common, on Charlton Street, which provides room for 2-3 cars. There is opportunity to fish, bird watch, hike a short trail, and watch the wildlife in this area. There is a pair of swans that often nests on the water body off Charlton Street. Hobbs Brook runs to Westville Lake, described in the following recreation area.

Westville Recreation Area – This 578 ± acre facility is located within the Towns of Sturbridge and Southbridge. Owned and managed by the US Army Corps of Engineers, this facility offers three acres of athletic fields, bicycling, boating (non-motorized), cross country skiing, football/soccer, fishing, general play, hiking, nature observing, organized events, picnicking, sightseeing and walking/jogging. There is a large picnic/recreation area, with two picnic shelters and charcoal grills located near the south end of the lake. The entrance is on Wallace Road in Sturbridge, off of Main Street, near the Quinebaug River Bridge. A boat ramp is also located in the recreation area. Camping and swimming are not permitted at this facility.

The property contains several trails. A 1.8-mile loop trail, known as the Westville Lake Community trail, circles the lake. It is open to all non-motorized use. It can be accessed from the recreation area, the dam site parking lot, and the Wallace Road trailhead. The Heritage walking trail starts at the dam site and heads north along the river to nearby West Street School in Southbridge. The Grand Trunk Trail, which follows the grade of the never completed Southern New England Railway, leads 1.1 miles from the recreation area to River Road in



Figure 5-25: Russell Chamberland ~ Westville Walk ~ Photo Contest Winner

Sturbridge. The western half of the Community Trail loop follows this railbed as well. Lastly, a 3/4 mile trail is also available in the Hobbs Brook area of the project, with a trailhead off Hall Road in Sturbridge<sup>4</sup>. The trails, including the dam site and Wallace Road parking areas, are open year-round from sunrise to sunset.

A canoe launching area

<sup>4</sup> US Army Corp of Engineers: <http://www.nae.usace.army.mil/Missions/Recreation/Westville-Lake/>, Westville Recreation Area: <https://www.recreation.gov/camping/westville-recreation-area/r/campgroundDetails.do?contractCode=NRSO&parkId=100033>

and fishing area is located along Old Mashapaug Road west of the recreation area. Canoeists can paddle up the Quinebaug River as far as Turner's Club Field in the village of Fiskdale, approximately five miles upstream. Old Mashapaug Road is open to vehicles during daylight hours from the opening of fishing season in April to the Sunday after Labor Day.

Streeter Point Recreation Area – Currently closed. This area is also known as East Brimfield Lake. It is a 140± acre site is owned by the Army Corp of Engineers and was formerly operated by the Massachusetts Department Conservation and Recreation. This accessible area had a 100 car parking area and offered fishing, swimming and picnicking on 400 acre East Brimfield Reservoir. It is now closed to the public. Boating access is available from the US Army Corps of Engineers maintained ramps on Route 20. Most of the walks in this area of the park are/were paved, creating wheelchair accessibility to fishing areas, restrooms, and picnic facilities all close to the water. It was formerly the only public beach access in the Town of Sturbridge.<sup>5</sup>

## B. Private Open Space Lands and Facilities

Privately-owned parcels described in this section include land with Conservation Restrictions, Chapter 61, 61A, and 61B land, and land of open space, recreation or conservation interest.

Temporary protection in of privately-owned parcels in town includes 3,991 ± acres in Chapter Land. The Chapter 61 program gives Massachusetts landowners an opportunity to reduce property taxes in exchange for providing benefits such as clean water, wildlife habitat, rural character, wood products, food, and outdoor recreation. Land is typically taxed on the developmental potential of the parcel. Undeveloped land reduces the strain on a town's resources and emergency services. <sup>6</sup> Chapter 61 offers an opportunity for property owners to receive a tax break in exchange for putting their land in one of the following programs for a specific period of time: Chapter 61 – Forestry is designed to encourage the preservation and enhancement of forest land, Chapter 61A – is classified as Horticultural or Agricultural land, and Chapter 61B – is classified as Open Space and/or Recreational land. When a parcel comes out of Chapter Land, the Town has the right of first refusal for purchasing the land as an opportunity to preserve it as open space.

There is also Open Space contained within subdivisions that is still held by the developers of the land. This land is referred to as Open Space per Subdivision Approval. It is still owned by the developers, but is permanently protected Open Space – it will not be developed. These lands include parcels in Draper Woods, Acorn Lane, Meadow View Lane, and Evergreen Lane.

---

<sup>5</sup> <http://www.ohranger.com/ma/streeter-point-rec-area>

<sup>6</sup> UMass Extension. "Understanding the Massachusetts Ch. 61 Current Use Tax Programs." Chapter 61 Programs.

Augmenting the publicly-owned open space lands are 376 acres of land with varying degrees of legal protection against development. These lands are owned by Opacum Land Trust and the Trustees for Reservations.

Opacum Land Trust owns roughly 322 acres of land which includes The Preserve, First Acre and The Gaumond Sanctuary. The Trust also owns 50 Bushnell Road, a 26.77 acre parcel that consists of a swamp. This parcel provides habitat protection and contributes to watershed management of the Walker Pond. It abuts Wells State Forest.

Opacum Woods is a permanently protected conservation area owned and stewarded by the Opacum Land Trust. There are about four miles of hiking trails on this 266-acre property, named after the colors with which they are marked: White, Blue, Yellow, and Red. The walking trails at Opacum Woods traverse a variety of habitats including some interesting features such as a beaver dam, a large glacial boulder, a rock shelter, and a vernal pool. The land was donated to Opacum Land Trust in June of 2003 by Robert Moss & Brendon Properties as part of the subdivision approval process of The Preserve. The area contains forested land including woodland ponds, swamps, vernal pools, historic and prehistoric sites, and habitat for some rare and some not-so-rare species. The Massachusetts Department of Conservation and Recreation holds a Conservation Easement on Opacum Woods.



Figure 5-26: Opacum Woods Trails. Opacum Land Trust.

First Acres Swamp was purchased by Opacum in 2001. It was the Trust's very first conservation project. This property contains 26.77 acres on Bushnell Road and it abuts Wells State Park. This land is a beautiful wetland and swamp and is also the headwaters of a tributary into Walker Pond. Protecting First Acres Swamp protects the water quantity and quality of this watershed. More information on the Opacum Land Trust's land can be found on their website: <http://www.opacumlt.org>.

The Herve & Mary Jane Gaumond Memorial Sanctuary, also known as "The Sanctuary", is located on New Boston Road. This 30 acre parcel was donated to Opacum Land Trust in 2002. The property is beautiful containing upland woods and vernal pools providing critical habitat for at least two state listed rare species. This parcel is contiguous with Opacum Woods and can be seen on the Opacum Woods map above.



Tantiusques Sites is owned and managed by The Trustees of Reservations. This area on Leadmine Road is comprised of three separate parcels and contains 54.31 acres and is registered with the National Register of Historic Places. According to the Trustees website Tantiusques (“tan-te-us-quays”) is a Nipmuck word meaning “to a black deposit between two hills”. The Tantiusques site was the center of one of New England’s first mining operations. The area is adjacent to Leadmine Wildlife Management Area. A spur off the short loop trail at the Tantiusques leads through quiet woods and ends at the Robert Crowd Site. Visitors can view the foundations of the house and barn of the African-American and Native American man who worked at the mine in the 1850s.<sup>7</sup>

The Nipmuck originally mined here for graphite to make ceremonial paints. In 1644, John Winthrop, Jr., son of the first governor of the Massachusetts Bay Colony, purchased the mine with hopes of extracting lead and iron. In the early 19th century, Captain Joseph Dixon and his son worked here before founding the J. D. Crucible Company of New Jersey, famous manufacturers of pencils.

Today, careful observers can see the mine cuts, ditches, and tailings piles made by the various mining operations. The mineshaft that tunnels into the face of the low ridge is the most recent of all the excavations, dating to 1902. Most of the mining at Tantiusques was of the open trench variety. The cut along the top of the ridge is the partially filled-in remainder of what was once a several thousand foot-long trench, 20 to 50 feet in depth and roughly 6 feet in width, which followed the vein of graphite.

**Vegetation:** The Tantiusques is a densely forested landscape dominated mostly by Oak and Hickory trees with scattered Hemlock throughout the forest. Mountain Laurel forms a dense understory layer throughout the site.

**Water:** There are a perennial stream and potential vernal pools on site. The parcels are situated at a higher elevation than the nearby Leadmine Pond.

**Wildlife:** Neotropical migrant species that typically require large patches of forest to support viable populations are well represented and including over 25 species of birds. Neotropical migrants represent more than half of the species observed and four out of the five most abundant species recorded. Pileated woodpeckers and turkeys have also been seen at the site. A large portion of the Tantiusques has been identified by Massachusetts BioMap as Supporting Natural Landscape for Core Habitat.

---

<sup>7</sup> “About Tantiusques.” The Trustees of Reservations. Available at <http://www.thetrustees.org/places-to-visit/central-ma/tantiusques.html> (Accessed May 25, 2018).

## C. Conservation Restrictions

In addition to the Conservation Restrictions discussed in the Town Owned Lands narrative, there are also private lands within the Town of Sturbridge that have Conservation Restrictions (CR). The following is a complete list the current Conservation Restrictions held in Town:

Table 5-1: Conservation Restrictions in Sturbridge

<b><u>Location</u></b>	<b><u>CR Holder</u></b>	<b><u>Owner</u></b>	<b><u>Notes</u></b>	<b><u>MapID</u></b>
<b>7 Allen</b>	Opacum Land Trust	Conservation Commission	Plimpton Community Forest	CR-14
<b>197 Brookfield Rd</b>	Opacum Land Trust	Conservation Commission	Long Pond	CR-3
<b>45 Champeaux</b>	Opacum Land Trust	Conservation Commission	Long Pond	CR-9
<b>55 Champeaux</b>	Opacum Land Trust	Conservation Commission	Long Pond	CR-12
<b>23 Evergreen Lane</b>	Conservation Commission	Private landowner	The Sanctuary	CR-5
<b>51 Holland Road</b>	Opacum Land Trust	Board of Selectman	Riverlands	CR-10
<b>55 Holland Road</b>	Opacum Land Trust	Board of Selectman	Riverlands	CR-13
<b>200 Leadmine</b>	Opacum Land Trust	Conservation Commission	Heins Farm	CR-4
<b>132 Mashapaug</b>	Conservation Commission	Private landowner	132 Mashapaug (not entire lot)	CR-19
<b>136 Mashapaug</b>	Conservation Commission	Private landowner	136 Mashapaug (not entire lot)	CR-21
<b>134 Mashapaug</b>	Conservation Commission	Private landowner	134 Mashapaug (not entire lot)	CR-20
<b>118 Mashapaug Rd</b>	Conservation Commission	Private landowner	118 Mashapaug Rd	CR-17
<b>110 McGilpin</b>	Dept. of Fish and Wildlife	Private landowner	McGilpin Road (not entire lot)	CR-2
<b>114 McGilpin</b>	Dept. of Fish and Wildlife	Private landowner	McGilpin Road (no public access)	CR-16
<b>122 McGilpin</b>	Conservation Commission	Private landowner	McGilpin Road (no public access)	CR-18
<b>277 New Boston</b>	Opacum Land Trust	Conservation Commission	Plimpton Community Forest	CR-6
<b>80 Route 15</b>	Opacum Land Trust	Conservation Commission	Shepard Parcel	CR-15
<b>10 Shattuck</b>	Dept. of Fish and Wildlife	Conservation Commission	Leadmine	CR-1
<b>36 Shattuck</b>	Dept. of Fish and Wildlife	Conservation Commission	Leadmine	CR-7
<b>4 Shumway Hill Rd</b>	Private landowner	Private landowner	Heins working farm	CR-8
<b>52 Stallion Hill Rd</b>	Opacum Land Trust	Board of Selectman	Riverlands	CR-11

## D. Recreational Facilities

Natural resources in Sturbridge offer valuable passive recreation opportunities. Lakes and ponds are widely used and available for the public use. Sturbridge is fortunate to have six Great Ponds designated by the Commonwealth within its boundaries, and all of which are presently in good health: Big Alum Pond, Cedar Pond, Leadmine Pond, Long Pond, South Pond/Quacumquasit Pond, and Walker Pond. The Sturbridge Lakes Advisory Committee (SLAC) works to support the lakes and ponds, protect the natural resources, and mitigate erosion, runoff, and invasive species. The SLAC is available through the Conservation Department as a resource for shoreline residents – they have many resources available to the public regarding good environmental stewardship practices around water resources.

Big Alum Lake offers public boat ramp access. Brimfield and Sturbridge residents have boat ramp and beach access to the East Brimfield Lake. Natural quiet settings along streams and ponds and within state parks provide idyllic camping experiences. There are several campgrounds in Sturbridge that draw campers from areas of the region and beyond. East of Interstate 84 in the southern section of Town there are two campgrounds and to the north there is one within the Wells State Park.



Figure 5-27: Conor Krochmalnyckyj ~ “The Bright Side” - South Pond ~ Photo Contest Winner

**Cedar Lake Recreation Area** – Owned and operated by the Town, this 14± acre site offers tennis courts, a basketball court, a waterfront swimming area with beach, handicap accessible picnic tables and a playground. In Fall 2017, the tennis courts and basketball courts were resurfaced, including improvements to lighting and fencing. For fishing on Cedar Pond, there is a small area on the west side of the pond that provides an excellent place to park and drop a line. To access the fishing spot, take Route 20 to Cedar Street, go past the entrance for Burgess Elementary School, and turn right at Cedar Pond Drive. During the summer, the town offers a recreational camp that includes swimming lessons, tennis lessons, and other fun summer activities.

**Sturbridge RV Resort** - Privately owned and operated, this 222 acre facility off of Mashapaug Road offers bicycling, boating (both motorized and non-motorized), camping, fresh water



fishing, freshwater swimming, hiking, and picnicking. This is a Thousand Trails park offering bocce, volleyball, and mini golf at the facility. It is important to note that there is no protection on this substantial recreational parcel.

**Pine Lake RV Resort** – Formerly Yogi Bear’s Jellystone Park, this privately owned and operated, this 76± acre facility off of River Road offers overnight camping, boating, swimming, picnicking and a clubhouse. This property has been approved for a large renovation, upgrading services, sites, and roads throughout the resort. It is important to note that there is no protection on this substantial recreational parcel.

**Old Sturbridge Village, Inc.** – Located on 392 acres, this privately owned and operated historic New England village setting offers organized events, opportunities to observe nature, natural history, and sightseeing. As a museum and learning resource of New England life, Old Sturbridge Village invites the visitor to find meaning, pleasure, relevance, and inspiration through the exploration of history. The Quinebaug River runs through the property.

**Hamilton Rod & Gun** - Privately owned and operated, this 155 acre facility offers boating (motorized and non-motorized), fresh water fishing, general play, hunting, nature observing, picnicking and target archery. This is a private club for the benefit of its members and guests that also hosts a number of activities throughout the year where the public is invited. Public events are posted on the club’s calendar. The Hamilton Rod & Gun Club has temporary protection under Chapter 61B – Recreation Land.

**Hemlock Golf Course** - This is a privately owned and operated golf course set on 128 acres. Hemlock Ridge Golf Course, an open-to-the-public, nine-hole course, offers active recreation as well. The golf course has temporary protection under Chapter 61B – Recreation Land.

**Tantasqua Regional Junior/Senior School** - Part of the regional school district, Tantasqua offers baseball and softball, basketball, football and soccer, general play, hiking, ice-skating, picnicking and tennis. The school building opened in Fall 2002, and many of its recreation facilities have been substantially renovated. Both the school and the town utilize the facilities at this 46 plus acre site.

**Burgess Elementary School** - The Burgess Elementary School was recently renovated. The 19 plus acre property contains three regulation size ball fields and an overlay field. A new updated playground and basketball court are also on site. The Burgess Elementary School PTO, along with assistance from the Sturbridge Trails Committee and Boy Scout Troup 161, built a ½ mile handicap accessible natural trail. The trail starts at the lower ball field at the school. The goal of The Burgess Discovery Trail is to provide an outside area for all students and staff to experience nature in a safe an educational environment. The trail can be used for many purposes, such as fitness, science and art classes, and viewing animals in their natural environment. There are Grey Owls that frequent the trail along with deer and other wildlife.<sup>8</sup>

<sup>8</sup> “Burgess Discovery Trail.” Burgess Elementary School, Sturbridge MA. <http://burgesspto.org/info/burgess-trails/>

**Turner's Field** – Town-owned and operated, this 2.90 acre site contains one baseball field. This field is mainly used for Legion League game play. The property abuts the Quinebaug River, and recently funding was approved to upgrade the fence between the field and the river to minimize the loss of balls. Currently there is not a defined parking area at the field.

**Town Barn Fields** – Town-owned and operated, this 35.70 acre site contains facilities for softball, soccer and a little league field. The Recreation Committee hired a Consultant to work to develop plans for new athletic fields to help serve the increasing recreational needs of the Town. The proposal involves the expansion of facilities to include a new regulation baseball field, one new multi-purpose regulation field and upgrades to the existing multi-purpose field, two basketball courts, a playground and a bocce court. The proposal includes parking for roughly 100 cars and a concession stand.

**Future Fields** – The 15 acre property at the Allen Road parcel at Plimpton Community is reserved for future active recreation use. There are no current plans for this property; focus of the Recreation Committee is currently on developing the Town Barn Fields.

## E. Sturbridge Trails

When the 2005 Open Space and Recreation Plan was written, there was not a Town Trail Committee. However, the town did have two representatives on the Grand Trunk Trail Regional Committee along with members from Southbridge, Opacum Land Trust, the Grand Trunk Trail Blazers, and the US Army Corp of Engineers.

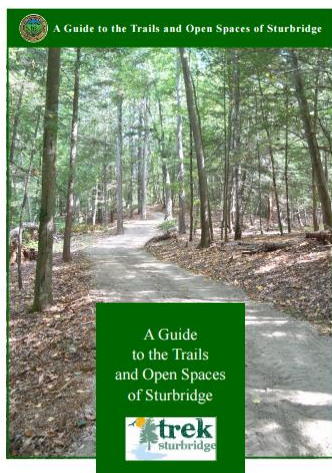


Figure 5-28: "A Guide to the Trails and Open Spaces of Sturbridge." Trek Sturbridge.

A Trails Committee was established in 2009 and this group is responsible for trail maintenance, construction and planning within the community on our public lands. Additionally, this group has been charged with working closely with state and federal groups to develop trails on their land. The Trails Committee is made up of four members and four associate members.

The Town of Sturbridge adopted the Recreation Trails Master Plan in 2012. The plan seeks to highlight the community's small town character, vast open spaces, scenic character, and abundant natural resources through the development of a diverse, interconnected system of recreation trails and signed touring routes. These facilities will provide improved access to protected lands, the Quinebaug River, community gathering places, and cultural/historical sites. The trail system will bolster Sturbridge's brand as a

conservation leader and the ample recreation opportunities will incentivize visitors to spend additional time in Town exploring our natural environment.<sup>9</sup>

Many of the trails in Sturbridge have been mapped using GPS data downloaded and utilized to produce trail maps. In 2017, the Sturbridge Trails Committee published “A Guide to the Trails and Open Spaces of Sturbridge”, an undertaking made possible with assistance from the Sturbridge Conservation and Planning offices as well as the Sturbridge Tourist Association. The finished product is a wonderful guidebook for nine areas with descriptions and maps of each hiking location throughout the Town.

There has been almost universal support for trails within Sturbridge, which is evidenced by the large group of volunteers that help build and maintain these trails. In addition to the numerous hours of work provided by the Trails Committee, each year thousands of hours are volunteered by local residents. At town meetings voters have approved funding to develop trails and to provide matching funds for grants that have been awarded to the Town by groups such as Massachusetts Department of Conservation and Recreation (DCR), US Army Corp of Engineers, the Last Green Valley (LGV), Nature Valley Co., Savers Bank, and the Federal Department of Transportation through their Transportation Enhancement (TE) program. The total amount of grants for trails in Sturbridge thus far is over \$600,000.

There are four major Trail Work Days each year: Spring Trail Day in April; National Trails Day in June; National Public Lands Day in September; and Make a Difference Day in October. For each trail day there are several sites where volunteers can come and help to build or maintain trails or celebrate trails with events like interpretive trail walks, adopt-a-trail events (sponsored by the Conservation Commission) geocaching, or bike tours. Local businesses often provide equipment, materials, and refreshments. An average attendance for Trails Days is between 50-80 people in town, young and old, for these work/celebration days.

### **Grand Trunk Trail**

The major trail in Sturbridge is the 6 mile Grand Trunk Trail (GTT) that travels east-west through town mostly on the old railbed for the Southern New England Railway, a division of the Grand Trunk Railway of Canada. The railway was intended to connect the Central Vermont Railway (also owned by the Grand Trunk Railway) in Palmer, MA to a new port in Providence, RI. The railbed through Massachusetts was completed but rails were never laid and bridges were never finished, as the biggest supporter in the company went down with the Titanic in 1912. The railroad is often referred to as the Titanic Railway and the 70 mile trail that follows its path from Palmer, MA to Franklin, MA is named the Titanic Trail.<sup>10</sup>

---

<sup>9</sup> Sturbridge Recreational Trails Master Plan, page 18.

<sup>10</sup> Grand Trunk Trail Massachusetts. <https://www.traillink.com/trail/grand-trunk-trail/> (Accessed May 25, 2018.)



The GTT starts on the eastern border of Sturbridge and Southbridge at the Westville Dam, one of Sturbridge's largest Open Space parcels owned by the United States Army Corp of Engineers. The Sturbridge section of the Grand Trunk Trail has been completed from Westville Reservoir to a bridged crossing of the Quinebaug River near South Road, north of Mashpaug Road. The trail continues west along the river on Army Corp land and easements from cooperating residents. In some places, development has encroached on the former railbed and the trail detours around these areas, often on town-owned parcels. The trail connects to another of Sturbridge's largest Open Space parcel, the Leadmine Mountain Conservation Area.

The next section of the trail runs 7,000 feet along the Sturbridge town-owned Riverlands to Holland Road. There it connects with the Sturbridge Trolley Trail, which was developed by the Sturbridge Lions Club and received a grant from the Last Green Valley to upgrade the surface to 10 foot wide stone dust trails. The Trolley Trail connects to the Army Corp property at East Brimfield Dam and the trail continues from there south along Long Pond where it connects with Brimfield trails.

The GTT is intended for all non-motorized users including bikers, walkers, baby strollers, wheelchair access, users with mobility issues, equestrians and more. As such, the grade is very flat at less than 2% for most of it. The trail is ten feet wide with no overhanging elements less than 12 feet (the height required by a horse and rider).

Currently the GTT has 2 of the 6 miles completed to final level including the Ed Calcutt Bridge over the Quinebaug. The most recent 1.2 miles were finished with a \$150,000 cooperative grant from DCR (\$35K), Army Corp (\$65K), and the Town of Sturbridge for (\$50K) or \$24 per foot of finished trail. The next mile from the Ed Calcutt Bridge to Farquhar Road is currently under design and the funding has been released to the town; we have received the order to proceed. This trail will be more expensive per foot as it crosses endangered species habitat where more sensitive design and boardwalks will increase the cost. Approximately 2 more miles are under public control and are passable, but not up to the full trail conditions standard. The final 1 1/4 miles through Sturbridge are still in the proposed and planning stages. The final section of the trail in the western and upstream portion of Town, connecting to the Brimfield Reservoir dam, has also received final approval for construction. This current status leaves an approximately 2-3 mile section in the middle of the trail and through the Commercial Tourist District to be completed in the future. A number of issues are delaying the completion of this large project, including funding, route selection, and environmental issues.

## **F. Protected Land Inventory**

The listing of protected lands is contained on the following pages. The Open Space Map follows this section.

**TOWN OF STURBRIDGE OPEN SPACE AND RECREATION PLAN - 2018**

**Table 5-2: Lands Under Special Taxation Programs**

<b><u>Property Address</u></b>	<b><u>Owner</u></b>	<b><u>Managing Agency</u></b>	<b><u>Acreage</u></b>	<b><u>Use Description</u></b>	<b><u>Assessor Parcel #</u></b>	<b><u>MapID</u></b>	<b><u>Notes</u></b>
110 Mcgilpin Road	Clay S Cocalis	Clay S Cocalis	52.09	Chapter 61 Forestry	432-02657-110	CH-3	Single Family
117 Mcgilpin Road	Christopher T Derosé	Christopher T Derosé	21.13	Chapter 61B Recreation	432-02637-117	CH-36	Single Family
146 Mcgilpin Road	Howard J Kelley	Howard J Kelley	25.23	Chapter 61 Forestry	432-02625-146	CH-9	Single Family
233 New Boston Road	Hamilton Rod & Gun Club	Hamilton Rod & Gun Club	6.24	Chapter 61 Forestry	455-01613-233	CH-47	None
338 New Boston Road	Holly L Tremblay	Holly L Tremblay	32.92	Chapter 61 Forestry	455-00638-338	CH-72	None
48 Old Farm Road	Spencer Solar LLC	Spencer Solar LLC	0.69	Chapter 61 Agriculture	475-03021-048	CH-88	None
58 Old Village Road	Walker Pond Association	Walker Pond Association	10.00	Chapter 61B Recreation	493-01715-058	CH-114	None
121 Paradise Lane	Robert F Para Trustee	Robert F Para Trustee	47	Chapter 61 Forestry	505-00447-121	CH-14	Single Family
205B Podunk Pike	Brant T Jennings	Brant T Jennings	75.10	Chapter 61 Forestry	518-00835-205B	CH-62	None
205C Podunk Pike	Iris A Jennings	Iris A Jennings	25.85	Chapter 61 Forestry	518-00825-205C	CH-63	None
176 Podunk Road	Thomas J Buell	Thomas J Buell	22.34	Chapter 61 Forestry	520-00841-176	CH-2	Single Family
177 Podunk Road	Gerald Roy Suprenant	Gerald Roy Suprenant	13.48	Chapter 61 Forestry	520-00842-177	CH-18	Single Family
181 Podunk Road	Robert P Moynagh	Robert P Moynagh	14.67	Chapter 61 Agriculture	520-00831-181	CH-26	Single Family
198 Podunk Road	Robert P Moynagh	Robert P Moynagh	146.00	Chapter 61 Agriculture	520-00831-198	CH-81	None
188A Podunk Road	Robert P Moynagh	Robert P Moynagh	3.88	Chapter 61 Agriculture	520-00831-188A	CH-80	None
29 Putnam Road	Chad R Frigon	Chad R Frigon	25	Chapter 61 Agriculture	530-00324-029	CH-24	Single Family



**TOWN OF STURBRIDGE OPEN SPACE AND RECREATION PLAN - 2018**

<b>Property Address</b>	<b>Owner</b>	<b>Managing Agency</b>	<b>Acreage</b>	<b>Use Description</b>	<b>Assessor Parcel #</b>	<b>MapID</b>	<b>Notes</b>
33 Putnam Road	Mark L Norwood	Mark L Norwood	96.57	Chapter 61 Agriculture	530-00312-033	CH-27	Single Family
15 Ridgeview Road	Edward T Goodwin	Edward T Goodwin	7.86	Chapter 61B Recreation	543-03826-015	CH-98	None
16 Ridgeview Road	Edward T Goodwin	Edward T Goodwin	1.95	Chapter 61B Recreation	543-03826-016	CH-99	None
72 Shattuck Road	William T Sujdak	William T Sujdak	79	Chapter 61 Forestry	570-03734-072	CH-17	Single Family
96 Shattuck Road	William Sujdak	William Sujdak	134.64	Chapter 61 Forestry	570-03752-096	CH-70	None
151 Shepard Road	Edward J Cloutier	Edward J Cloutier	5.26	Chapter 61 Agriculture	575-03848-151	CH-125	None
186 Shepard Road	Romona P Kirker-Head	Romona P Kirker-Head	13.81	Chapter 61 Agriculture	575-04217-186	CH-90	None
188 Shepard Road	Romona P Kirker-Head	Romona P Kirker-Head	12	Chapter 61 Agriculture	575-04228-188	CH-25	Single Family
196 Shepard Road	Romona P Kirker-Head	Romona P Kirker-Head	11.05	Chapter 61 Agriculture	575-04228-196	CH-91	None
4 Shumway Hill Road	Robert Scott	Robert Scott	12	Chapter 61 Agriculture	583-02758-004	CH-31	Single Family
21 South Road	Erin Apher	Erin Apher	77	Chapter 61 Agriculture	595-04252-021	CH-21	Single Family
22 South Road	Scott I McCarthy	Scott I McCarthy	21.95	Chapter 61 Forestry	595-04232-022	CH-12	Single Family
45 South Road	Sherrie L Rouse	Sherrie L Rouse	5.00	Chapter 61 Agriculture	595-04612-045	CH-83	None
49 South Road	Sherrie L Rouse	Sherrie L Rouse	15.05	Chapter 61 Agriculture	595-04612-049	CH-84	None
53 South Road	Cole M Scheffler	Cole M Scheffler	73.8	Chapter 61 Forestry	595-04621-053	CH-15	Single Family
83 South Road	Hull Forestlands LP	Hull Forestlands LP	15.25	Chapter 61 Forestry	595-04652-083	CH-55	None
52A Streeter Road	Kevin J Palmer	Kevin J Palmer	28.55	Chapter 61 Forestry	613-02733-52A	CH-66	None
85 Taylor Road	Hull Forestlands LP	Hull Forestlands LP	55.00	Chapter 61 Forestry	635-04818-085	CH-56	None
87 Taylor Road	Hull Forestlands LP	Hull Forestlands LP	40.00	Chapter 61 Forestry	635-04548-087	CH-57	None
89 Taylor Road	Hull Forestlands LP	Hull Forestlands LP	9.75	Chapter 61 Forestry	635-04547-089	CH-58	None
91 Taylor Road	Hull Forestlands LP	Hull Forestlands LP	30.00	Chapter 61 Forestry	635-04556-091	CH-59	None

**TOWN OF STURBRIDGE OPEN SPACE AND RECREATION PLAN - 2018**

<b><u>Property Address</u></b>	<b><u>Owner</u></b>	<b><u>Managing Agency</u></b>	<b><u>Acreage</u></b>	<b><u>Use Description</u></b>	<b><u>Assessor Parcel #</u></b>	<b><u>MapID</u></b>	<b><u>Notes</u></b>
93 Taylor Road	Hull Forestlands LP	Hull Forestlands LP	20.00	Chapter 61 Forestry	635-04827-093	CH-50	None
95 Taylor Road	Hull Forestlands LP	Hull Forestlands LP	6.00	Chapter 61 Forestry	635-04836-095	CH-60	None
97 Taylor Road	Hull Forestlands LP	Hull Forestlands LP	6.18	Chapter 61 Forestry	635-04836-097	CH-61	None
18 Vinton Road	Marie Mercure	Marie Mercure	12.91	Chapter 61B Recreation	655-04722-018	CH-102	None
2 Walker Pond Road	2 Walker Pond Company	2 Walker Pond Company	55.36	Chapter 61 Forestry	660-01746-002	CH-46	None
256 Walker Road	David Ouelette	David Ouelette	51.6	Chapter 61 Forestry	662-00721-256	CH-13	Single Family
40 Wallace Road	Edward J Cloutier	Edward J Cloutier	14.50	Chapter 61 Agriculture	665-03931-040	CH-77	None
37 Wells Park Road	Walker Pond Association	Walker Pond Association	30.14	Chapter 61B Recreation	675-01744-037	CH-112	None
53 Wells Park Road	Walker Pond Association	Walker Pond Association	13.16	Chapter 61B Recreation	675-01724-053	CH-113	None
66 Westwood Drive	Lillian H Trustee Palmer	Lillian H Trustee Palmer	11.48	Chapter 61B Recreation	678-02121-066	CH-105	None
30 Whittemore Road	Mae Dawn Suminski	Mae Dawn Suminski	17.23	Chapter 61B Recreation	680-02937-030	CH-43	Single Family

**TOWN OF STURBRIDGE OPEN SPACE AND RECREATION PLAN - 2018**

**Table 5-3: Town Owned Lands**

<u>Property Address</u>	<u>Managing Agency</u>	<u>Use Description</u>	<u>Acreage</u>	<u>Parcel #</u>	<u>MapID</u>	<u>Condition</u>	<u>Public access</u>	<u>Recreational Potential</u>	<u>Zoning*</u>	<u>Protection Status</u>	<u>Funds used</u>	<u>Deed restrictions</u>
305 Brookfield Road	Town Of Sturbridge	Brook Hill Open Space	24.19	173-00442-305	OS-87	Good	Yes	Low	RR	In perpetuity	Private	None
319 Brookfield Road	Town Education	Tantasqua Regional High School	52.75	173-00423-319	OS-88	Excellent	Yes	High	RR	None	Education	None
320 Brookfield Road	Town Education	Tantasqua Regional High School	51.69	173-00424-320	OS-91	Excellent	Yes	High	RR	None	Education	None
45 Burgess School Road	Town Education	Burgess Elementary School	45	180-02444-045	OS-95	Excellent	Yes	High	SR	None	Education	None
1 Cedar Lake Drive	Town Of Sturbridge	Sturbridge Recreation Area	0.17	198-02427-001	OS-67	Good	Yes	High	SR	None	Town	None
32 Cedar Lake Drive	Town Of Sturbridge	Access to Cedar Lake	0.18	198-02437-032	OS-89	Fair	Yes	High	SR	None	Tax Taking	None
42 Cedar Street	Town Education	Burgess Elementary School	3.25	202-02426-042	OS-93	Excellent	Yes	High	SR	None	Education	None
58 Cedar Street	Town Of Sturbridge	Sturbridge Recreation Area	0.46	202-02426-058	OS-110	Good	Yes	High	SR	None	Tax Taking	None
60 Cedar Street	Town Of Sturbridge	Sturbridge Recreation Area	12.76	202-02416-060	OS-111	Good	Yes	High	SR	None	Town	None

\*RR = Rural Residential, SR= Suburban Residential

**TOWN OF STURBRIDGE OPEN SPACE AND RECREATION PLAN - 2018**

<u>Property Address</u>	<u>Managing Agency</u>	<u>Use Description</u>	<u>Acreage</u>	<u>Parcel #</u>	<u>MapID</u>	<u>Condition</u>	<u>Public access</u>	<u>Recreational Potential</u>	<u>Zoning*</u>	<u>Protection Status</u>	<u>Funds used</u>	<u>Deed restrictions</u>
70 Cedar Street	Inhabitants of Sturbridge	Sturbridge Recreation Area	14.02	202-02417-070	OS-115	Good	Yes	High	SR	None	Town	None
13 Cross Road	Town Of Sturbridge	Hamant Brook Res	19.50	237-04737-013	OS-70	Good	Yes	Low	RR	None	Town	None
46 Holland Road	Town Of Sturbridge	Old Trolley Line Recreational Trail/GTT	4.88	348-02356-046	OS-97	Good	Yes	Medium	SR	In perpetuity	Town	None
50 Holland Road	Town Of Sturbridge	Riverlands	0.59	348-02716-050	OS-101	Good	Yes	High	RR	In perpetuity	Tax Taking	CR
55 Holland Road	Town Of Sturbridge	Riverlands	40.28	348-02716-055	OS-109	Good	Yes	High	RR	In perpetuity	Tax Taking	CR
196 Leadmine Road	Town Of Sturbridge	part of Heins farm	1.00	400-03321-196	OS-72	Good	Yes	High	RR	None	Donation	None
200 Leadmine Road	Town Of Sturbridge	Heins Farm Conservation Area	85.00	400-03228-200	OS-76	Good	Yes	High	RR	In perpetuity	CPA	CR
529 Leadmine Road	Town Of Sturbridge	Open Land	25.00	400-04714-529	OS-104	Good	Yes	High	RR	None	Tax Taking	None
278 Main Street	Town Of Sturbridge	Town Common	1.79	415-02924-278	OS-84	Good	Yes	High	HC	None	Town	None
469A Main Street	Town Of Sturbridge	Adjacent Riverlands	6.11	415-02443-469A	OS-98	Good	No	Medium	CT	None	Tax Taking	None

\*RR = Rural Residential, SR= Suburban Residential, CT = Commercial Tourist District



**TOWN OF STURBRIDGE OPEN SPACE AND RECREATION PLAN - 2018**

<u>Property Address</u>	<u>Managing Agency</u>	<u>Use Description</u>	<u>Acreage</u>	<u>Parcel #</u>	<u>MapID</u>	<u>Condition</u>	<u>Public access</u>	<u>Recreational Potential</u>	<u>Zoning*</u>	<u>Protection Status</u>	<u>Funds used</u>	<u>Deed restrictions</u>
529 Main Street	Town Education	Turner's Playing Fields	2.90	415-02431-529	OS-105	Good	Yes	High	CT	None	Tax Taking	None
547 Main Street	Town Education	Turner's Playing Fields	1.07	415-02431-547	OS-106	Good	Yes	High	CT	None	Tax Taking	None
549 Main Street	Town Of Sturbridge	Fiskdale Mill Park	0.22	415-02431-549	OS-107	Good	Yes	High	CT	None	Town	None
712 Main Street	Town Of Sturbridge	Boat Ramp for Long Pond	55.00	415-02342-712	OS-116	Good	Yes	High	SR	None	Town	None
272 Mass Turnpike	Town Of Sturbridge	Adjacent Opacum Woods	13.59	426-02516-272	OS-82	Good	Yes	High	SR	None	Donation	None
69 Route 84	Town Of Sturbridge	Town Barn Fields	35.70	550-02931-069	OS-113	Good	Yes	High	SR	None	Town	None
153 Walker Pond Road	Town Of Sturbridge	Walker Pond Access	2.40	660-01244-153	OS-71	Fair	Yes	High	RR	None	Town	None

\*RR = Rural Residential, SR= Suburban Residential, CT = Commercial Tourist District

**TOWN OF STURBRIDGE OPEN SPACE AND RECREATION PLAN - 2018**

**Table 5-4: Conservation Commission Owned/Managed Lands**

<u>Property Address</u>	<u>Managing Agency</u>	<u>Use Description</u>	<u>Acreage</u>	<u>Parcel #</u>	<u>Map ID</u>	<u>Condition</u>	<u>Public access</u>	<u>Recreational Potential</u>	<u>Zoning*</u>	<u>Protection Status</u>	<u>Funds used</u>	<u>Deed restrictions</u>
7 Allen Road	Conservation Commission	Plimpton Property	15.01	110-00655-007	OS-114	Good	Yes	High	RR	In perpetuity	CPC, LAND Grant, US Forest Service, Private	CR
197 Brookfield Road	Conservation Commission	Access to Long Pond potential trails	0.16	173-01444-197	OS-73	Good	Yes	Medium	SR	In perpetuity	Lucent Gift Funds	CR
45 Champeaux Road	Conservation Commission	Long Pond potential trails	19.94	206-01922-045	OS-96	Good	Yes	Medium	RR	In perpetuity	Tax Taking	CR
55 Champeaux Road	Conservation Commission	Long Pond potential trails	59.47	206-01912-055	OS-108	Good	Yes	Excellent	RR	In perpetuity	CPA, Town	CR
67 Clarke Road	Conservation Commission	Open Space	13.67	215-01948-067	OS-112	Good	Yes	Low	SR	In perpetuity	Town	None
75 Farquhar Road	Conservation Commission	Adjacent Federal Land	10.83	270-03454-075	OS-117	Good	Yes	Low	RR	None	Tax Taking	None
47 Finlay Road	Conservation Commission	Open Space	34.14	276-03644-047	OS-99	Good	Yes	Low	RR	None	Tax Taking	None

\*RR = Rural Residential, SR= Suburban Residential

**TOWN OF STURBRIDGE OPEN SPACE AND RECREATION PLAN - 2018**

<u>Property Address</u>	<u>Managing Agency</u>	<u>Use Description</u>	<u>Acreage</u>	<u>Parcel #</u>	<u>Map ID</u>	<u>Condition</u>	<u>Public access</u>	<u>Recreational Potential</u>	<u>Zoning*</u>	<u>Protection Status</u>	<u>Funds used</u>	<u>Deed restrictions</u>
51 Holland Road	Conservation Commission	Riverlands	28.63	348-02717-051	OS-102	Good	Yes	High	RR	In perpetuity	CPC, Town	CR
197 Leadmine Road	Conservation Commission	Leadmine Parking Lot	96.00	400-03321-197	OS-74	Good	Yes	High	RR	In perpetuity	Tax Taking	None
277 New Boston Road	Conservation Commission	Plimpton Property	281.25	455-01134-277	OS-83	Good	Yes	High	RR	In perpetuity	CPC, LAND Grant, US Forest Service, Private	CR
43 Old Mashapaug Road	Conservation Commission	Overlooks Quinebaug River	2.91	485-04225-043	OS-94	Good	Yes	Medium	RR	None	Donation	None
5 Regep Lane	Conservation Commission	Detention basin	0.59	536-02954-005	OS-100	Good	No	Low	SR	None	Town	Drainage Easement
8 Regep Lane	Conservation Commission	Open Space	13.05	536-02954-008	OS-118	Good	Yes	Low	SR	None	Town	None
80 Route 15	Conservation Commission	Shepard Parcel	8.52	552-02952-080	OS-119	Excellent	Yes	High	HC	In perpetuity	CPA	CR
10 Shattuck Road	Conservation Commission	Leadmine Conservation Area	813.97	570-03337-010	OS-68	Excellent	Yes	High	RR	In perpetuity	CPC, DFW	CR
36 Shattuck Road	Conservation Commission	Leadmine Conservation Area	12.40	570-03347-036	OS-92	Excellent	Yes	Medium	RR	In perpetuity	CPC, DFW	CR

\*RR = Rural Residential, SR= Suburban Residential, HC = Historic Commercial

**TOWN OF STURBRIDGE OPEN SPACE AND RECREATION PLAN - 2018**

<u>Property Address</u>	<u>Managing Agency</u>	<u>Use Description</u>	<u>Acreage</u>	<u>Parcel #</u>	<u>Map ID</u>	<u>Condition</u>	<u>Public access</u>	<u>Recreational Potential</u>	<u>Zoning*</u>	<u>Protection Status</u>	<u>Funds used</u>	<u>Deed restrictions</u>
127A Stallion Hill Road	Conservation Commission	Leadmine Conservation Area	72.06	605-02823-127A	OS-69	Excellent	Yes	High	RR	In perpetuity	Lucent Gift Fund, Self Help Grant	None
52 Stallion Hill Road	Conservation Commission	Riverlands	71.66	605-02454-052	OS-103	Good	Yes	High	RR	In perpetuity	CPC, Town	CR
20 Stony Brook Drive	Conservation Commission	Open Space	5.92	610-02424-020	OS-75	Good	Yes	Low	SR	None	Town	None
25 Stony Brook Drive	Conservation Commission	Open Space	0.50	610-02415-025	OS-79	Good	Yes	Low	SR	None	Town	None
26 Stony Brook Drive	Conservation Commission	Open Space	0.59	610-02425-026	OS-80	Good	Yes	Low	SR	None	Town	None
27 Stony Brook Drive	Conservation Commission	Open Space	0.54	610-02415-027	OS-81	Good	Yes	Low	SR	None	Town	None
28 Stony Brook Drive	Conservation Commission	Open Space	0.61	610-02425-028	OS-85	Good	Yes	Low	SR	None	Town	None
30 Stony Brook Drive	Conservation Commission	Open Space	0.53	610-02415-030	OS-86	Good	Yes	Low	SR	None	Town	None
234 Walker Road	Conservation Commission	Wildlife/Water Protection	54.00	662-00724-234	OS-77	Good	Yes	Low	RR	None	Tax Taking	None

\*RR = Rural Residential, SR= Suburban Residential



**TOWN OF STURBRIDGE OPEN SPACE AND RECREATION PLAN - 2018**

<u>Property Address</u>	<u>Managing Agency</u>	<u>Use Description</u>	<u>Acreage</u>	<u>Parcel #</u>	<u>Map ID</u>	<u>Condition</u>	<u>Public access</u>	<u>Recreational Potential</u>	<u>Zoning*</u>	<u>Protection Status</u>	<u>Funds used</u>	<u>Deed restrictions</u>
236 Walker Road	Conservation Commission	Wildlife/Water Protection	37.00	662-00725-236	OS-78	Good	Yes	Low	RR	None	Tax Taking	None
32 Warren Road	Conservation Commission	Wildlife/Water Protection	19.25	668-00932-032	OS-90	Good	Yes	Low	RR	None	Tax Taking	None

\*RR = Rural Residential

**Table 5-5: Federally Owned Lands**

<u>Property Address</u>	<u>Managing Agency</u>	<u>Use Description</u>	<u>Acreage</u>	<u>Parcel #</u>	<u>Map ID</u>	<u>Condition</u>	<u>Public access</u>	<u>Recreational Potential</u>	<u>Zoning*</u>	<u>Protection Status</u>	<u>Funds used</u>
215 Brookfield Road	U S Army Corps Of Engineers	Long Pond - adjacent Town land	2.45	173-01432-215	OS-129	Good	No	Low	RR	In perpetuity	Federal
33 Champeaux Road	U S Army Corps Of Engineers	Long Pond Fishing Area	63.93	206-01924-033	OS-130	Good	Yes	High	RR	In perpetuity	Federal
229 Charlton Road	U S Army Corps Of Engineers	Pistol Pond	1.51	208-02527-229	OS-142	Good	No	Low	C	In perpetuity	Federal
236 Charlton Road	U S Army Corps Of Engineers	Hobbs Brook	1.92	208-02527-236	OS-143	Good	Yes	Low	GI	In perpetuity	Federal

\*RR = Rural Residential, SR= Suburban Residential, C= Commercial, GI = General Industrial

**TOWN OF STURBRIDGE OPEN SPACE AND RECREATION PLAN - 2018**

<u>Property Address</u>	<u>Managing Agency</u>	<u>Use Description</u>	<u>Acreage</u>	<u>Parcel #</u>	<u>Map ID</u>	<u>Condition</u>	<u>Public access</u>	<u>Recreational Potential</u>	<u>Zoning*</u>	<u>Protection Status</u>	<u>Funds used</u>
19 Charlton Street	U S Army Corps Of Engineers	Adjacent Hobbs Brooks	1.95	209-02915-019	OS-141	Good	Yes	Medium	SR	In perpetuity	Federal
62 Charlton Street	U S Army Corps Of Engineers	Hobbs Brook	34.51	209-02556-062	OS-128	Good	Yes	High	SR/C	In perpetuity	Federal
65 Charlton Street	U S Army Corps Of Engineers	Adjacent Hobbs Brooks	0.67	209-02547-065	OS-131	Good	Yes	Medium	C	In perpetuity	Federal
55 Farquhar Road	U S Army Corps Of Engineers	Breakneck Brook	111.75	270-03434-055	OS-132	Good	Yes	High	SR/RR	In perpetuity	Federal
254 Main Street	U S Army Corps Of Engineers	Hobbs Brook Conservation Wildlife Area	27.24	415-02925-254	OS-133	Good	Yes	High	SR	In perpetuity	Federal
255 Main Street	U S Army Corps Of Engineers	Hobbs Brook	121.96	415-02925-255	OS-134	Good	Yes	High	RR/SR	In perpetuity	Federal
711 Main Street	U S Army Corps Of Engineers	Streeter Point Recreation Area	140.95	415-02342-711	OS-135	Abandoned	Yes	High	RR/SR	In perpetuity	Federal
59 Mashapaug Road	U S Army Corps Of Engineers	Breakneck Brook	14.38	423-04212-059	OS-136	Good	Yes	High	RR	In perpetuity	Federal
62 Mashapaug Road	U S Army Corps Of Engineers	Breakneck Brook	8.50	423-04212-062	OS-137	Good	Yes	Medium	RR	In perpetuity	Federal

\*RR = Rural Residential, SR= Suburban Residential, C= Commercial, SU = Special Use District, HC = Historic Commercial

**TOWN OF STURBRIDGE OPEN SPACE AND RECREATION PLAN - 2018**

<b><u>Property Address</u></b>	<b><u>Managing Agency</u></b>	<b><u>Use Description</u></b>	<b><u>Acreage</u></b>	<b><u>Parcel #</u></b>	<b><u>Map ID</u></b>	<b><u>Condition</u></b>	<b><u>Public access</u></b>	<b><u>Recreational Potential</u></b>	<b><u>Zoning*</u></b>	<b><u>Protection Status</u></b>	<b><u>Funds used</u></b>
147 Route 84	U S Army Corps Of Engineers	Quinebaug River	71.08	550-03412-147	OS-138	Good	Yes	Medium	SR/RR	In perpetuity	Federal
81 Wallace Road	U S Army Corps Of Engineers	Westville Recreation Area	69.44	665-03952-081	OS-139	Excellent	Yes	High	SR	In perpetuity	Federal
30 Warren Road	U S Army Corps Of Engineers	Tributary to Long Pond	49.08	668-00932-030	OS-140	Good	No	Low	RR	In perpetuity	Federal

\*RR = Rural Residential, SR= Suburban Residential

**TOWN OF STURBRIDGE OPEN SPACE AND RECREATION PLAN - 2018**

**Table 5-6: State Owned Lands**

<u>Property Address</u>	<u>Managing Agency</u>	<u>Use Description</u>	<u>Acreage</u>	<u>Parcel #</u>	<u>Map ID</u>	<u>Condition</u>	<u>Public access</u>	<u>Recreational Potential</u>	<u>Zoning*</u>	<u>Protection Status</u>	<u>Funds used</u>
9 Badger Road	Dept of Fish & Wildlife	Habitat Protection	0.50	127-04423-009	OS-61	Good	Yes	Low	RR	None	State
103A Breakneck Road	Dept of Fish & Wildlife	Habitat Protection	8.00	170-05116-103A	OS-1	Good	Yes	Low	RR	None	State
105A Breakneck Road	Dept of Fish & Wildlife	Habitat Protection	71.34	170-05115-105A	OS-2	Good	Yes	Low	RR	None	State
107A Breakneck Road	Dept of Fish & Wildlife	Habitat Protection	53.19	170-05136-107A	OS-3	Good	Yes	Low	RR	None	State
109A Breakneck Road	Dept of Fish & Wildlife	Habitat Protection	8.95	170-05144-109A	OS-4	Good	Yes	Low	RR	None	State
111A Breakneck Road	Dept of Fish & Wildlife	Habitat Protection	47.57	170-05144-111A	OS-5	Good	Yes	Low	RR	None	State
113A Breakneck Road	Dept of Fish & Wildlife	Habitat Protection	36.39	170-05124-113A	OS-6	Good	Yes	Low	RR	None	State
123 Breakneck Road	Dept of Fish & Wildlife	Habitat Protection	0.11	170-05423-123	OS-9	Good	Yes	Medium	RR	None	State
125 Breakneck Road	Dept of Fish & Wildlife	Habitat Protection	31.00	170-05424-125	OS-10	Good	Yes	Low	RR	None	State

\*RR = Rural Residential



**TOWN OF STURBRIDGE OPEN SPACE AND RECREATION PLAN - 2018**

<u>Property Address</u>	<u>Managing Agency</u>	<u>Use Description</u>	<u>Acreage</u>	<u>Parcel #</u>	<u>Map ID</u>	<u>Condition</u>	<u>Public access</u>	<u>Recreational Potential</u>	<u>Zoning*</u>	<u>Protection Status</u>	<u>Funds used</u>
131 Breakneck Road	Dept of Fish & Wildlife	Habitat Protection	0.10	170-05424-131	OS-11	Good	Yes	Medium	RR	None	State
143 Breakneck Road	Dept of Fish & Wildlife	Habitat Protection	91.12	170-04842-101	OS-15	Good	Yes	Low	RR	None	State
85A Breakneck Road	Dept of Fish & Wildlife	Habitat Protection	31.96	170-04812-085A	OS-58	Good	Yes	High	RR	None	State
87A Breakneck Road	Dept of Fish & Wildlife	Habitat/Water Protection	63.17	170-04825-087A	OS-59	Good	Yes	High	RR	None	State
89A Breakneck Road	Dept of Fish & Wildlife	Habitat Protection	28.23	170-04844-089A	OS-60	Good	Yes	Low	RR	None	State
91A Breakneck Road	Dept of Fish & Wildlife	Habitat Protection	29.93	170-04845-091A	OS-63	Good	Yes	Low	RR	None	State
97A Breakneck Road	Dept of Fish & Wildlife	Habitat/Water Protection	50.73	170-04813-097A	OS-64	Good	Yes	High	RR	None	State
310 Brookfield Road	Dept of Fish & Wildlife	Wolfswamp WMA	11.61	173-00443-310	OS-29	Good	Yes	High	RR	None	State
312 Brookfield Road	Dept of Fish & Wildlife	Wolfswamp WMA	4.07	173-00443-312	OS-30	Good	Yes	High	RR	None	State

\*RR = Rural Residential

**TOWN OF STURBRIDGE OPEN SPACE AND RECREATION PLAN - 2018**

<u>Property Address</u>	<u>Managing Agency</u>	<u>Use Description</u>	<u>Acreage</u>	<u>Parcel #</u>	<u>Map ID</u>	<u>Condition</u>	<u>Public access</u>	<u>Recreational Potential</u>	<u>Zoning*</u>	<u>Protection Status</u>	<u>Funds used</u>
314 Brookfield Road	Dept of Fish & Wildlife	Wolfswamp WMA	1.61	173-00443-314	OS-31	Good	Yes	High	RR	None	State
316 Brookfield Road	Dept of Fish & Wildlife	Wolfswamp WMA	69.18	173-00443-316	OS-32	Excellent	Yes	High	RR	None	State
318 Brookfield Road	Dept of Fish & Wildlife	Wolfswamp WMA	3.56	173-00433-318	OS-33	Excellent	Yes	High	RR	None	State
18 Bushnell Road	Dept of Fish & Wildlife	Wells State Park	93.00	183-01235-018	OS-21	Excellent	Yes	High	RR	None	State
21 Bushnell Road	Dept of Fish & Wildlife	Wells State Park	95.60	183-01226-021	OS-23	Excellent	Yes	High	RR	None	State
303 Clarke Road Extension	Dept of Fish & Wildlife	Big Alum Boat Ramp & Parking	0.75	216-01447-303	OS-27	Good	Yes	High	RR	None	State
43B Glendale Road	Dept of Fish & Wildlife	Wolfswamp WMA	4.48	307-00437-43B	OS-42	Good	Yes	High	RR	None	State
45 Glendale Road	Dept of Conservation & Recreation	Wolfswamp WMA	11.30	307-00417-045	OS-47	Good	Yes	High	RR	None	State
51 Glendale Road	Dept of Fish & Wildlife	Wolfswamp WMA	73.97	307-00418-051	OS-52	Good	Yes	High	RR	None	State

\*RR = Rural Residential

**TOWN OF STURBRIDGE OPEN SPACE AND RECREATION PLAN - 2018**

<u>Property Address</u>	<u>Managing Agency</u>	<u>Use Description</u>	<u>Acreage</u>	<u>Parcel #</u>	<u>Map ID</u>	<u>Condition</u>	<u>Public access</u>	<u>Recreational Potential</u>	<u>Zoning*</u>	<u>Protection Status</u>	<u>Funds used</u>
62 Glendale Road	Dept of Fish & Wildlife	Wolfswamp WMA	54.40	307-00531-062	OS-56	Good	Yes	High	RR	None	State
18 Goodrich Road	Dept of Fish & Wildlife	Habitat Protection	0.11	309-04424-018	OS-22	Good	Yes	High	RR	None	State
90 Goodrich Road	Dept of Fish & Wildlife	Leadmine Pond Island	0.34	309-04434-090	OS-62	Good	Yes	High	RR	None	State
422 Leadmine Road	Dept of Fish & Wildlife	Leadmine WMA	60.00	400-03643-422	OS-39	Good	Yes	Medium	RR	None	State
424 Leadmine Road	Dept of Fish & Wildlife	Leadmine WMA	14.50	400-03641-424	OS-40	Good	Yes	Medium	RR	None	State
426 Leadmine Road	Dept of Fish & Wildlife	Leadmine WMA	40.00	400-03651-426	OS-41	Good	Yes	Medium	RR	None	State
442 Leadmine Road	Dept of Fish & Wildlife	Leadmine WMA	1.08	400-04053-442	OS-43	Good	Yes	Medium	RR	None	State
444 Leadmine Road	Dept of Fish & Wildlife	Leadmine WMA	1.13	400-04053-444	OS-44	Good	Yes	Medium	RR	None	State
445 Leadmine Road	Dept of Fish & Wildlife	Leadmine WMA/Water Access	71.49	400-04054-445	OS-45	Good	Yes	Medium	RR	None	State

\*RR = Rural Residential

**TOWN OF STURBRIDGE OPEN SPACE AND RECREATION PLAN - 2018**

<u>Property Address</u>	<u>Managing Agency</u>	<u>Use Description</u>	<u>Acreage</u>	<u>Parcel #</u>	<u>Map ID</u>	<u>Condition</u>	<u>Public access</u>	<u>Recreational Potential</u>	<u>Zoning*</u>	<u>Protection Status</u>	<u>Funds used</u>
446 Leadmine Road	Dept of Fish & Wildlife	Leadmine WMA	65.16	400-04053-446	OS-46	Good	Yes	Medium	RR	None	State
458 Leadmine Road	Dept of Fish & Wildlife	Leadmine WMA	1.56	400-04412-458	OS-48	Good	Yes	Medium	RR	None	State
471 Leadmine Road	Dept of Fish & Wildlife	Habitat Protection	0.50	400-04423-471	OS-49	Good	Yes	Low	RR	None	State
480 Leadmine Road	Dept of Fish & Wildlife	Habitat Protection	44.55	400-04432-480	OS-50	Good	Yes	Low	RR	None	State
485 Leadmine Road	Dept of Fish & Wildlife	Habitat/Water Protection	0.95	400-04433-485	OS-51	Good	Yes	Low	RR	None	State
515 Leadmine Road	Dept of Fish & Wildlife	Habitat/Water Protection	40.28	400-04454-515	OS-54	Good	Yes	Low	RR	None	State
140 Mass Turnpike	Dept of Conservation & Recreation	Habitat/Water Protection	13.88	426-02212-140	OS-12	Good	Yes	Low	RR	None	State
118 Mcgilpin Road	Dept of Fish & Wildlife	McKinstry WMA	60.84	432-02637-118	OS-7	Good	Yes	Low	RR	None	State
36 Mcgilpin Road	Dept of Fish & Wildlife	McKinstry WMA	50.27	432-03056-036	OS-37	Good	Yes	Low	RR	None	State
40 Mcgilpin Road	Dept of Fish & Wildlife	McKinstry WMA	33.02	432-03046-040	OS-38	Good	Yes	Low	RR	None	State



**TOWN OF STURBRIDGE OPEN SPACE AND RECREATION PLAN - 2018**

<u>Property Address</u>	<u>Managing Agency</u>	<u>Use Description</u>	<u>Acres</u>	<u>Parcel #</u>	<u>Map ID</u>	<u>Condition</u>	<u>Public access</u>	<u>Recreational Potential</u>	<u>Zoning*</u>	<u>Protection Status</u>	<u>Funds used</u>
278 New Boston Road	Dept of Conservation & Recreation	Wells State Park	7.41	455-01135-278	OS-25	Excellent	Yes	Low	RR	None	State
334 Paradise Lane	Dept of Conservation & Recreation	Big Alum Island	0.81	505-00946-334	OS-35	Good	Yes	Low	SR	None	State
31 Podunk Road	Dept of Conservation & Recreation	Wells State Park	1.09	520-01718-031	OS-28	Excellent	Yes	Low	RR	None	State
33 Podunk Road	Dept of Conservation & Recreation	Wells State Park	1.28	520-01258-033	OS-34	Excellent	Yes	Low	RR	None	State
35 Podunk Road	Dept of Conservation & Recreation	Wells State Park	1.10	520-01258-035	OS-36	Excellent	Yes	Low	RR	None	State
99 Podunk Road	Dept of Conservation & Recreation	Wells State Park	2.66	520-01351-099	OS-65	Excellent	Yes	Low	RR	None	State
510 Route 15	Dept of Fish & Wildlife	Habitat/Water Protection	2.59	552-04418-510	OS-53	Good	Yes	Low	RR	None	State
520 Route 15	Dept of Fish & Wildlife	Habitat/Water Protection	183.76	552-04461-520	OS-55	Good	Yes	Low	RR	None	State
164 Route 84	Dept of Fish & Wildlife	Habitat/Water Protection	1.86	550-04151-164	OS-19	Good	Yes	Low	RR	None	State
75 Taylor Road	Dept of Fish & Wildlife	Habitat/Water Protection	135.00	635-04848-075	OS-57	Good	Yes	Low	RR	None	State
140 Walker Pond Road	Dept of Fish & Wildlife	Wells State Park	53.42	660-01254-140	OS-13	Excellent	Yes	High	RR	None	State

**TOWN OF STURBRIDGE OPEN SPACE AND RECREATION PLAN - 2018**

<u>Property Address</u>	<u>Managing Agency</u>	<u>Use Description</u>	<u>Acreage</u>	<u>Parcel #</u>	<u>Map ID</u>	<u>Condition</u>	<u>Public access</u>	<u>Recreational Potential</u>	<u>Zoning*</u>	<u>Protection Status</u>	<u>Funds used</u>
141 Walker Pond Road	Commonwealth of Massachusetts	Wells State Park	4.24	660-01254-141	OS-14	Excellent	Yes	High	RR	None	State
154 Walker Pond Road	Dept of Conservation & Recreation	Wells State Park	1.00	660-01244-154	OS-17	Excellent	Yes	High	RR	None	State
159 Walker Pond Road	Dept of Conservation & Recreation	Wells State Park	1237.5	660-01233-159	OS-18	Excellent	Yes	High	RR	None	State
210 Walker Pond Road	Dept of Conservation & Recreation	Wells State Park	109	660-00754-210	OS-24	Excellent	Yes	High	RR	None	State
99 Walker Pond Road	Other Non V	Wells State Park	1.20	660-01735-099	OS-66	Excellent	Yes	High	RR	None	State
3 Wells Park Road	Dept of Conservation & Recreation	Wells State Park	0.26	675-01755-003	OS-26	Excellent	Yes	High	RR	None	State
17 Woodlawn Drive	Dept of Conservation & Recreation	Habitat/Water Protection	0.66	694-01753-017	OS-20	Good	Yes	Medium	RR	None	State

\*RR = Rural Residential

**TOWN OF STURBRIDGE OPEN SPACE AND RECREATION PLAN - 2018**

**Table 5-7: Other Privately Owned Lands**

<u>Property Address</u>	<u>Managing Agency</u>	<u>Use Description</u>	<u>Acreage</u>	<u>Parcel #</u>	<u>Map ID</u>	<u>Condition</u>	<u>Public access</u>	<u>Recreational Potential</u>	<u>Zoning*</u>	<u>Protection Status</u>	<u>Funds used</u>	<u>Deed restrictions</u>
14 Acorn Lane	Countryside Home Builders	Open Space	4.20	104-02018-014	OS-146	Excellent	Yes	High	SR	Open Space per Subdivision Approval	Private	Yes
14 Audubon Way	Opacum Land Trust Inc	Opacum Woods	254.00	107-02514-014	OS-120	Excellent	Yes	High	SR	Non-Profit	Non-Profit	None
37 Audubon Way	Opacum Land Trust Inc	Open Space	10.07	107-02154-037	OS-121	Excellent	Yes	High	SR	Non-Profit	Non-Profit	None
50 Bushnell Road	Opacum Land Trust Inc	Swamp	26.77	183-01227-050	OS-122	Excellent	Yes	High		Non-Profit	Non-Profit	None
13 Draper Woods Road	T Reardon Builders	Open Space	13.25	248-01916-013	OS-147	Excellent	Yes	High	SR	Open Space per Subdivision Approval	Private	Yes
23 Evergreen Lane	Sanctuary Homeowners	Open Space	43.40	254-02044-023	OS-145	Excellent	Yes	High	SR	Open Space per Subdivision Approval	Private	Yes
475 Leadmine Road	The Trustees Of Reservations	Open Space/Recreation	1.01	400-04423-475	OS-125	Excellent	Yes	High	RR	Non-Profit	Non-Profit	None
479 Leadmine Road	The Trustees Of Reservations	Open Space/Recreation	1.01	400-04423-479	OS-126	Excellent	Yes	High	RR	Non-Profit	Non-Profit	None

\*RR = Rural Residential, SR= Suburban Residential

**TOWN OF STURBRIDGE OPEN SPACE AND RECREATION PLAN - 2018**

<u>Property Address</u>	<u>Managing Agency</u>	<u>Use Description</u>	<u>Acreage</u>	<u>Parcel #</u>	<u>Map ID</u>	<u>Condition</u>	<u>Public access</u>	<u>Recreational Potential</u>	<u>Zoning*</u>	<u>Protection Status</u>	<u>Funds used</u>	<u>Deed restrictions</u>
500 Leadmine Road	The Trustees Of Reservations	Open Space/Recreation	52.29	400-04441-500	OS-127	Excellent	Yes	High	RR	Non-Profit	Non-Profit	None
18 Meadow View Lane	Sanctuary Homes LLC as Trustees	Open Space	30.78	435-02051-018	OS-144	Excellent	Yes	High	RR	Open Space per Subdivision Approval	Private	Yes
168 New Boston Road	Opacum Land Trust Inc	Gaumond Sanctuary	29.98	455-02124-168	OS-123	Excellent	Yes	High	SR	Non-Profit	Non-Profit	None
1 Preserve Way	Opacum Land Trust Inc	Open Space	0.87	525-02533-001	OS-124	Excellent	Yes	High	SR	Non-Profit	Non-Profit	None

\*RR = Rural Residential, SR= Suburban Residential

**TOWN OF STURBRIDGE OPEN SPACE AND RECREATION PLAN - 2018**

**Table 5-8 – Recreation Parcels** (Please note some of these parcels may appear in other tables due to the level of protection or ownership)

<u>Property Address</u>	<u>Managing Agency</u>	<u>Use Description</u>	<u>Parcel #</u>	<u>Acreage</u>	<u>Map ID</u>	<u>Notes</u>	<u>Public access</u>	<u>Recreational Potential</u>	<u>Zoning</u>	<u>Protection Status</u>
87-1 Breakneck Road	MHC Sturbridge LLC	Sturbridge RV Resort	170-04825-87-1	18.31	N/A	Campground	Open to guests	High	RR	None
319 Brookfield Road	Tantasqua Regional School District	Junior High & High School and Playing Fields	173-00423-319	92.40	OS-88	No public access during school hours	Limited	High	RR	None
320 Brookfield Road	Tantasqua Regional School District	Junior High & High School and Playing Fields	173-00423-320	51.69	OS-91	No public access during school hours	Limited	High	RR	None
45 Burgess School Road	Town of Sturbridge	Elementary School & Playing Fields, Playground	180-02444-045	52.79	OS-95	No public access during school hours	Limited	High	CT/SR	None
60 Cedar Street	Town of Sturbridge	Cedar Pond Recreation Area	202-02417-070	27.07	OS-67	Public Beach, tennis court, basketball court	Yes	High	SR	None
246 Cedar Street	Hamilton Rod & Gun Club	Hamilton Rod & Gun Club	202-01527-246	10.38	CH-48	Short and long gun ranges, ponds, camping area, pavilion and club house	Members Rod & Gun Club	High	RR	Temporary
33 Champeaux Road	U S Army Corps Of Engineers	Long Pond Fishing Area	206-01924-033	63.93	OS-130	Long Pond Access	Yes	High	RR	In perpetuity

\*RR = Rural Residential, SR= Suburban Residential, CT = Commercial Tourist District



**TOWN OF STURBRIDGE OPEN SPACE AND RECREATION PLAN - 2018**

<b><u>Property Address</u></b>	<b><u>Managing Agency</u></b>	<b><u>Use Description</u></b>	<b><u>Parcel #</u></b>	<b><u>Acreage</u></b>	<b><u>Map ID</u></b>	<b><u>Notes</u></b>	<b><u>Public access</u></b>	<b><u>Recreational Potential</u></b>	<b><u>Zoning</u></b>	<b><u>Protection Status</u></b>
24 Hamilton Road	Hamilton Rod & Gun Club	Hamilton Rod & Gun Club	318-01632-024	138.00	CH-5	Gun ranges, ponds, camping.	Members Rod & Gun Club	High	RR	Temporary
220 Holland Road	Marc Palmer	Hemlock Golf Course	348-03214-220	128.00	CH-39	Golf Facility	Green fees apply; memberships available	High	RR	Temporary
19 Mashapaug Road	MHC Sturbridge LLC	Sturbridge RV Resort	423-04137-019	204.27	N/A	Campground	Open to guests	High	RR	None
278 Main Street	Town of Sturbridge	Town Common/Bandstand Area	415-02924-278	1.79	OS-84	Registered as scenic green space in the National Historic Register District	Yes	High	HC	None
366 Main Street	Hospitality Associates Of Lancaster LP	Sturbridge Host Hotel & Conference Center	415-02531-366	6.84	N/A	Hotel and Conference Center	Private Hotel that has beach access, and paddle boat rentals.	Medium	C	None
529 Main Street	Town of Sturbridge	Turner's Playing Fields	415-02431-529	2.90	OS-105	Recreational Playing Field	Yes	High	CT	None
547 Main Street	Town of Sturbridge	Turner's Playing Fields	415-02431-547	1.07	OS-106	Recreational Playing Field	Yes	High	CT	None

\*RR = Rural Residential, SR= Suburban Residential, C= Commercial, CT = Commercial Tourist, HC = Historic Commercial

**TOWN OF STURBRIDGE OPEN SPACE AND RECREATION PLAN - 2018**

<b><u>Property Address</u></b>	<b><u>Managing Agency</u></b>	<b><u>Use Description</u></b>	<b><u>Parcel #</u></b>	<b><u>Acreage</u></b>	<b><u>Map ID</u></b>	<b><u>Notes</u></b>	<b><u>Public access</u></b>	<b><u>Recreational Potential</u></b>	<b><u>Zoning</u></b>	<b><u>Protection Status</u></b>
711 Main Street	US Army Corp of Engineers/DRC	Streeter Point Recreation Area	415-02342-711	140.95	OS-135	DRC abandoned facility	Abandoned	High	RR	In perpetuity
233 New Boston Road	Hamilton Rod & Gun Club	Hamilton Rod & Gun Club	455-01613-233	6.24	CH-47	Short and long gun ranges, ponds, camping area, pavilion and club house	Members Rod & Gun Club	High	RR	Temporary
1 Old Sturbridge Village Road	Old Sturbridge Village	Old Sturbridge Village	491-02455-001	361.96	N/A	No public access during school hours	Admission Fee; free to residents	High	RR	None
30 River Road	Woods & Waters Inc.	Pine Lake RV Resort	545-03453-030	76.00	N/A	Campground	Open to guests	High	RR	None
69 Route 84	Town of Sturbridge	Town Barn Recreational Fields	550-02931-069	35.70	OS-113	Multiple playing fields	Yes	High	RR	None
81 Wallace Road	U S Army Corps Of Engineers	Westville Recreation Area	665-03952-081	69.44	OS-139	Also in Southbridge	Yes	High	SR	In perpetuity
153 Walker Pond Road	Town of Sturbridge	Walker Pond Access Area	660-01244-153	2.40	OS-71	Boat Launch	Yes	High	RR	None

\*RR = Rural Residential, SR= Suburban Residential

**TOWN OF STURBRIDGE OPEN SPACE AND RECREATION PLAN - 2018**

**Table 5-9 – Parcels of Interest**

<u>Parcel Name</u>	<u>Owner</u>	<u>Assessor Parcel #</u>	<u>Acreage</u>	<u>Potential Use</u>	<u>Notes</u>	<u>Zoning*</u>
23 Hall Road	Laurence Hobbs	315-02917-023	23.43	Historic Preservation of the Home and Open Space /Habitat Protection of the open field area that serves as a buffer for the Hobbs Brook Wetlands. This parcel also provides a scenic vista on Hall Road.	The Hobbs Property is one of the designated Priority Heritage Landscapes in the Sturbridge Reconnaissance Report prepared through the Massachusetts Heritage Landscape Inventory Program (June 2007). The property includes a wood frame house built by Samuel Hobbs in about 1780. There is a long stretch of open field that parallels the road.	SR
53 Holland Road	Mary Jane Belanger	348-02717-053	10.18	Open Space/Habitat Protection/Water Quality	A potential vital connection in the Riverlands. Obtaining this parcel of the old railbed would complete the Riverlands open space.	RR
34 Ladd Road	Town of Sturbridge	375-01815-034	10.13	Open Space/Habitat Protection/Water Quality	Town owned land, but not designated Open Space; adjacent McKinstry Brook	RR
36 Ladd Road	Town of Sturbridge	375-01825-036	4.75	Open Space/Habitat Protection/Water Quality	Town owned land, but not designated Open Space; adjacent McKinstry Brook	RR
196 Leadmine Road	Town of Sturbridge	400-03321-196	1.00	Open Space/ Habitat Protection/Recreation	Former Telecommunications Tower Site - Not functioning identified in mapping as part of Heins farm, but not protection is on this parcel.	RR
466 Leadmine Road	Town of Sturbridge	400-04412-466	1.02	Open Space/Habitat Protection/Recreation	Property taken by tax taking; adjacent to the Leadmine WMA. No protection at this time.	RR
469A Main Street	Town of Sturbridge	415-02443-469A	6.11	Open Space/Habitat Protection/Recreation	Tax taking. Adjacent Riverlands and Commercial Tourist District. No protection at this time	CT
40A South Road	Town of Southbridge	595-04614-40A	9	Watershed Protection		RR
42 South Road	Town of Southbridge	595-04615-042	82.39	Watershed Protection		RR

\*RR = Rural Residential, SR= Suburban Residential, CT = Commercial Tourist

**TOWN OF STURBRIDGE OPEN SPACE AND RECREATION PLAN - 2018**

<b><u>Parcel Name</u></b>	<b><u>Owner</u></b>	<b><u>Assessor Parcel #</u></b>	<b><u>Acreage</u></b>	<b><u>Potential Use</u></b>	<b><u>Notes</u></b>	<b><u>Zoning*</u></b>
86 South Road	Town of Southbridge	595-04653-086	79	Watershed Protection		RR
21 Taylor Road	Town of Southbridge	635-04922-021	29.9	Watershed Protection		RR
22 Taylor Road	Town of Southbridge	635-04922-022	29.02	Watershed Protection		RR
Many	Many			Parcels that will provide better access to the Sturbridge Lakes and Ponds.		
Outdoor World	MHC Sturbridge LLC	423-04137-019	204.27	Continued Campground Use	Campground	RR
Outdoor World	MHC Sturbridge LLC	170-04825-87-1	18.31	Continued Campground Use	Campground	RR
Pine Lake RV Resort	Woods & Waters Inc.	545-03453-030	76	Continued Campground Use	Campground	RR
Sarty Farm	Lynne Sarty Petersen	270-03435-047	74.84	Open Space/Agricultural	Farm	SR
63 Hillside Drive	Edward Goodwin	340-03824-63	64.16	River Access	Vacant Land with River Access, abutting 75 acre Sarty Farm	SR
9 Holland Road	Banjo Boy LLC	348-02338-009	8.5	Redevelopment	Potential redevelopment with incorporation of a river walk and promoting connection with the Commercial Tourist District.	CT
7 Allen Road	Town of Sturbridge	110-00655-007	15.01	Open Space/Recreation	Potential space for recreational fields, dog friendly park or trails.	RR
50 Holland Road	Town of Sturbridge	348-02716-050	0.59	Open Space/Habitat Protection/Recreation	Property taken by tax taking; adjacent to the Riverlands and GTT.	RR
466 Leadmine Road	Town of Sturbridge	400-04412-466	1.02	Open Space/Habitat Protection/Recreation	Property taken by tax taking; adjacent to the Leadmine WMA in Tantiusques area. No protection at this time.	RR

\*RR = Rural Residential, SR= Suburban Residential, CT = Commercial Tourist

**TOWN OF STURBRIDGE OPEN SPACE AND RECREATION PLAN - 2018**

<b><u>Parcel Name</u></b>	<b><u>Owner</u></b>	<b><u>Assessor Parcel #</u></b>	<b><u>Acreage</u></b>	<b><u>Potential Use</u></b>	<b><u>Notes</u></b>	<b><u>Zoning*</u></b>
50 Douty Road		245-02717-050	138.73	Development with possible Open Space/Habitat Protection/Recreation	Barrett Farm was one of the designated Priority Heritage Landscapes identified in 2007. The new owners could consider the possibility of preserving areas of open space for habitat and wetland protection, wildlife connectivity, and hiking trails and open space.	RR
10 & 14 Douty Road		245-02717-014	102.8	Development with possible Open Space/Habitat Protection/Recreation	Barrett Farm was one of the designated Priority Heritage Landscapes identified in 2007. The new owners could consider the possibility of preserving areas of open space for habitat and wetland protection, wildlife connectivity, and hiking trails or open space.	RR
75 Farquhar	Town of Sturbridge	270-03454-075	10.83	Dog park or dog friendly trails	Open Space/Habitat Protection/Recreation	RR
43 Old Mashapaug Road	Town of Sturbridge	485-04225-043	2.91	Dog park or friendly trails	Open Space/Habitat Protection/Recreation	RR

\*RR = Rural Residential



### **Accessibility of Town Owned Properties**

The Town continues to take steps to make sure that individuals of all abilities are able to access and enjoy the open space and recreation areas in the community. The Town completed the “Town of Sturbridge Accessibility Plan” in August 2008. This plan evaluated all town buildings and facilities including our recreational areas; it can be found in the Appendix of this report. The plan identified deficiencies and set forth an action plan to correct the deficiencies. Progress is being made, including resurfacing of parking areas and acquiring new accessible picnic tables, but since so many areas need to be addressed it will be some time before all recreational areas are compliant.

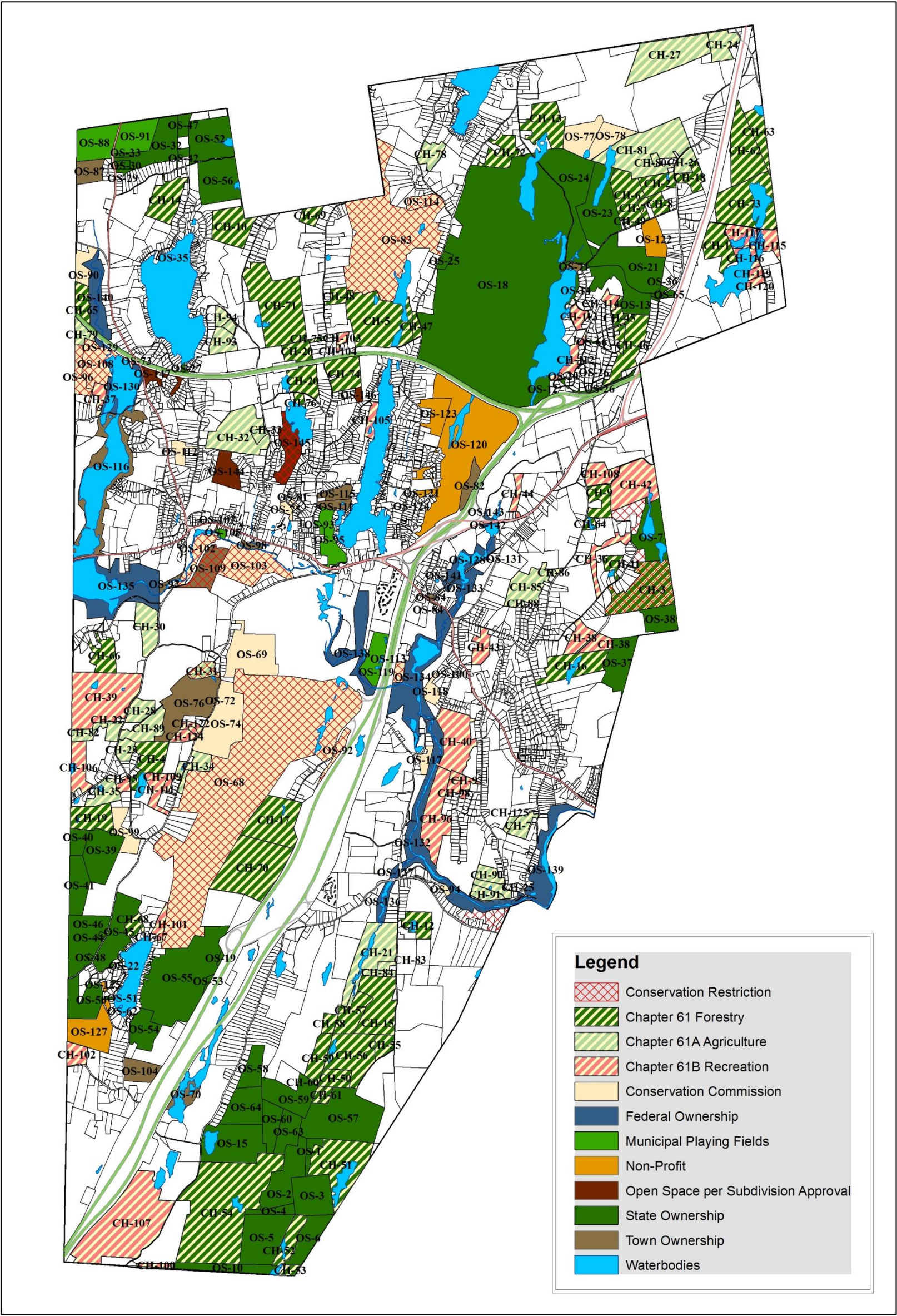
Open Space parcels were not included in the 2008 plan assessment. However, these parcels are being evaluated and updated to ensure accessibility on parcels that the public is being encouraged to use. These measures are not being undertaken on parcels acquired for water protection purposes or on forest cutting parcels, nor are they being undertaken on small landlocked parcels that were acquired mainly for habitat protection and that are impossible to access without crossing other privately owned properties. The Town will continue to make upgrades and improvements in providing access and planned improvements are contained in the Goals section of this plan. Further information can be found in Appendix G.

THIS PAGE INTENTIONALLY LEFT BLANK

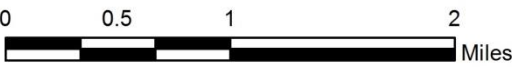


Map 12: Open Space Map. (Parcel labels are on the following pages.)

# Town of Sturbridge Open Space Map



Date created: April 2, 2018. This map was produced for planning purposes only. The information is not adequate for legal boundary definition, regulatory interpretation, or parcel level analysis. Data Sources: Town of Sturbridge, MassGIS



THIS PAGE INTENTIONALLY LEFT BLANK



**Table 5-10 – Open Space Parcels**

<b><u>Location</u></b>	<b><u>Owner</u></b>	<b><u>Map ID</u></b>
7 Ladd Road	David M Barnicle	CH-1
176 Podunk Road	Thomas J Buell	CH-2
110 Mcgilpin Road	Clay S Cocalis	CH-3
20 Finlay Road	James G Gerrish	CH-4
24 Hamilton Road	Hamilton Rod & Gun Club	CH-5
45 Bushnell Road	Reed V Hillman	CH-6
49 Bushnell Road	Reed V Hillman	CH-7
57 Bushnell Road	Reed V Hillman	CH-8
146 Mcgilpin Road	Howard J Kelley	CH-9
251 Arnold Road	Louis Robert Latch Jr	CH-10
97 Mcgilpin Road	Michelle Matte	CH-11
22 South Road	Scott I McCarthy	CH-12
256 Walker Road	David Ouelette	CH-13
121 Paradise Lane	Robert F Para Trustee	CH-14
53 South Road	Cole M Scheffler	CH-15
66 Fiske Hill Road	Mark T Stedman	CH-16
72 Shattuck Road	William T Sujdak	CH-17
177 Podunk Road	Gerald Roy Suprenant	CH-18
281 Holland Road	Mary A Szyszkiewicz	CH-19
24 Cooper Road	Debra A Warrington	CH-20
21 South Road	Erin Apher	CH-21
224 Holland Road	Keren P Bourdeau	CH-22
241 Holland Road	Keren P Dupre	CH-23
29 Putnam Road	Chad R Frigon	CH-24
188 Shepard Road	Romona P Kirker-Head	CH-25
181 Podunk Road	Robert P Moynagh	CH-26
33 Putnam Road	Mark L Norwood	CH-27
119 Holland Road	Marc D & Joseph R Palmer	CH-28
70 Holland Road	David P Peterkin	CH-30
4 Shumway Hill Road	Robert Scott	CH-31
99 Arnold Road	Matthew S Sosik	CH-32
97 Arnold Road	Matthew S Sosik	CH-33
317 Leadmine Road	Trustee Of Kristine Tourtelotte	CH-34
261 Holland Road	Christine Zelenak	CH-35
117 Mcgilpin Road	Christopher T Derosé	CH-36
37 Champeaux Road	Douglas M Fish	CH-37
56 Mcgilpin Road	Brandon L Goodwin	CH-38
220 Holland Road	Marc D & Joseph R Palmer	CH-39
47 Farquhar Road	Lynne Sarty	CH-40
16 Beaudry Road	Anthony Jr Silvestri	CH-42
30 Whittemore Road	Mae Dawn Suminski	CH-43

**TOWN OF STURBRIDGE OPEN SPACE AND RECREATION PLAN - 2018**

214 Charlton Road	David Sweetman	CH-44
2 Falls Road Extension	2 Walker Pond Company	CH-45
2 Walker Pond Road	2 Walker Pond Company	CH-46
233 New Boston Road	Hamilton Rod & Gun Club	CH-47
246 Cedar Street	Hamilton Rod & Gun Club	CH-48
43 Bushnell Road	Reed V Hillman	CH-49
93 Taylor Road	Hull Forestlands LP	CH-50
101A Breakneck Road	Hull Forestlands LP	CH-51
115A Breakneck Road	Hull Forestlands LP	CH-52
117A Breakneck Road	Hull Forestlands LP	CH-53
155 Breakneck Road	Hull Forestlands LP	CH-54
83 South Road	Hull Forestlands LP	CH-55
85 Taylor Road	Hull Forestlands LP	CH-56
87 Taylor Road	Hull Forestlands LP	CH-57
89 Taylor Road	Hull Forestlands LP	CH-58
91 Taylor Road	Hull Forestlands LP	CH-59
95 Taylor Road	Hull Forestlands LP	CH-60
97 Taylor Road	Hull Forestlands LP	CH-61
205B Podunk Pike	Brant T Jennings	CH-62
205C Podunk Pike	Iris A Jennings	CH-63
188 Fiske Hill Road	Howard J Kelley	CH-64
227 Brookfield Road	Roland A Leclerc	CH-65
52A Streeter Road	Kevin J Palmer	CH-66
112 Gladding Lane	Sherri A Pelski	CH-67
80 Leadmine Lane	Sherri A Pelski	CH-68
281 Cedar Street	Michael Steuer Jr & Sr Trustees	CH-69
96 Shattuck Road	William Sujdak	CH-70
208 Arnold Road	John B Szugda	CH-71
338 New Boston Road	Holly L Tremblay	CH-72
18 Ladd Road	Wayne P Tupper	CH-73
220 Cedar Street	Robert D Jr Waraika	CH-74
221 Cedar Street	David A Warrington	CH-75
23 Cooper Road	Debra A Warrington	CH-76
40 Wallace Road	Edward J Cloutier	CH-77
44 Allen Road	John D Holdcraft	CH-78
221 Brookfield Road	John W Freeman	CH-79
188A Podunk Road	Robert P Moynagh	CH-80
198 Podunk Road	Robert P Moynagh	CH-81
224B Holland Road	Marc D & Joseph R Palmer	CH-82
45 South Road	Sherrie L Rouse	CH-83
49 South Road	Sherrie L Rouse	CH-84
133 Fiske Hill Road	Spencer Solar LLC	CH-85
137 Fiske Hill Road	Spencer Solar LLC	CH-86
139 Fiske Hill Road	Spencer Solar LLC	CH-87



**TOWN OF STURBRIDGE OPEN SPACE AND RECREATION PLAN - 2018**

48 Old Farm Road	Spencer Solar LLC	CH-88
237 Holland Road	Keren P Dupre	CH-89
186 Shepard Road	Romona P Kirker-Head	CH-90
196 Shepard Road	Romona P Kirker-Head	CH-91
7 Lake Road	Howard I Pratt	CH-92
5 Lake Road	Lissa Pratt	CH-93
11 Lake Road	Mary Melissa Pratt	CH-94
19 Finlay Road	James G Gerrish	CH-95
63 Hillside Drive	Edward T Goodwin	CH-96
10 Laurel Hill Road	Edward T Goodwin	CH-97
15 Ridgeview Road	Edward T Goodwin	CH-98
16 Ridgeview Road	Edward T Goodwin	CH-99
253 Breakneck Road	Fred H Jr Grimshaw	CH-100
87 Leadmine Lane	Kurt Klages	CH-101
18 Vinton Road	Marie Mercure	CH-102
38 Hamilton Road	Ky Nguyen	CH-103
40 Hamilton Road	Ky Nguyen	CH-104
66 Westwood Drive	Lillian H Trustee Palmer	CH-105
266 Holland Road	Tina K Piette	CH-106
180 Breakneck Road	Doris Edw Roger Pontbriand	CH-107
218 Fiske Hill Road	Anthony Silvestri	CH-108
330 Leadmine Road	Susan A Vaill	CH-109
340 Leadmine Road	Susan A Vaill	CH-110
354 Leadmine Road	Susan A Vaill	CH-111
37 Wells Park Road	Walker Pond Association	CH-112
53 Wells Park Road	Walker Pond Association	CH-113
58 Old Village Road	Walker Pond Association	CH-114
27 Ladd Road	Ann M Sellew	CH-115
10 Ladd Road	Brent And Ann Sellew	CH-116
11 Ladd Road	Brent And Ann Sellew	CH-117
16 Ladd Road	Brent And Ann Sellew	CH-118
20 Ladd Road	Brent And Ann Sellew	CH-119
26 Ladd Road	Brent And Ann Sellew	CH-120
30 Ladd Road	Brent And Ann Sellew	CH-121
294 Leadmine Road	Richard E Paradise	CH-122
298 Leadmine Road	Richard E Paradise	CH-123
300 Leadmine Road	Richard E Paradise	CH-124
151 Shepard Road	Edward J Cloutier	CH-125
318 Leadmine Road	Trustee Of Kristine L Tourtelotte	CH-126
10 Shattuck	Conservation Commission	CR-1
110 McGilpin	Private landowner	CR-2
197 Brookfield Rd	Conservation Commission	CR-3
200 Leadmine	Conservation Commission	CR-4
23 Evergreen Lane	Private landowner	CR-5

**TOWN OF STURBRIDGE OPEN SPACE AND RECREATION PLAN - 2018**

277 New Boston	Conservation Commission	CR-6
36 Shattuck	Conservation Commission	CR-7
4 Shumway Hill Road	Private landowner	CR-8
45 Champeaux	Conservation Commission	CR-9
51 Holland Road	Board of Selectman	CR-10
52 Stallion Hill Road	Board of Selectman	CR-11
55 Champeaux	Conservation Commission	CR-12
55 Holland Road	Board of Selectman	CR-13
7 Allen	Conservation Commission	CR-14
80 Route 15	Conservation Commission	CR-15
114 McGilpin	Private landowner	CR-16
118 Mashapaug Rd	Private landowner	CR-17
122 McGilpin	Private landowner	CR-18
132 Mashapaug	Private landowner	CR-19
134 Mashapaug	Private landowner	CR-20
136 Mashapaug	Private landowner	CR-21
103A Breakneck Road	Dept of Fish & Wildlife	OS-1
105A Breakneck Road	Dept of Fish & Wildlife	OS-2
107A Breakneck Road	Dept of Fish & Wildlife	OS-3
109A Breakneck Road	Dept of Fish & Wildlife	OS-4
111A Breakneck Road	Dept of Fish & Wildlife	OS-5
113A Breakneck Road	Dept of Fish & Wildlife	OS-6
118 McGilpin Road	Dept of Fish & Wildlife	OS-7
123 Breakneck Road	Dept of Fish & Wildlife	OS-9
125 Breakneck Road	Dept of Fish & Wildlife	OS-10
131 Breakneck Road	Dept of Fish & Wildlife	OS-11
140 Mass Turnpike	Dept of Conservation & Recreation	OS-12
140 Walker Pond Road	Dept of Fish & Wildlife	OS-13
141 Walker Pond Road	Other Non V	OS-14
143 Breakneck Road	Dept of Fish & Wildlife	OS-15
154 Walker Pond Road	Dept of Conservation & Recreation	OS-17
159 Walker Pond Road	Dept of Conservation & Recreation	OS-18
164 Route 84	Dept of Fish & Wildlife	OS-19
17 Woodlawn Drive	Dept of Conservation & Recreation	OS-20
18 Bushnell Road	Dept of Fish & Wildlife	OS-21
18 Goodrich Road	Dept of Fish & Wildlife	OS-22
21 Bushnell Road	Dept of Fish & Wildlife	OS-23
210 Walker Pond Road	Dept of Conservation & Recreation	OS-24
278 New Boston Road	Dept of Conservation & Recreation	OS-25
3 Wells Park Road	Dept of Conservation & Recreation	OS-26
303 Clarke Road Ext	Dept of Fish & Wildlife	OS-27
31 Podunk Road	Dept of Conservation & Recreation	OS-28
310 Brookfield Road	Dept of Fish & Wildlife	OS-29
312 Brookfield Road	Dept of Fish & Wildlife	OS-30

**TOWN OF STURBRIDGE OPEN SPACE AND RECREATION PLAN - 2018**

314 Brookfield Road	Dept of Fish & Wildlife	OS-31
316 Brookfield Road	Dept of Fish & Wildlife	OS-32
318 Brookfield Road	Dept of Fish & Wildlife	OS-33
33 Podunk Road	Dept of Conservation & Recreation	OS-34
334 Paradise Lane	Dept of Conservation & Recreation	OS-35
35 Podunk Road	Dept of Conservation & Recreation	OS-36
36 Mcgilpin Road	Dept of Fish & Wildlife	OS-37
40 Mcgilpin Road	Dept of Fish & Wildlife	OS-38
422 Leadmine Road	Dept of Fish & Wildlife	OS-39
424 Leadmine Road	Dept of Fish & Wildlife	OS-40
426 Leadmine Road	Dept of Fish & Wildlife	OS-41
43B Glendale Road	Dept of Fish & Wildlife	OS-42
442 Leadmine Road	Dept of Fish & Wildlife	OS-43
444 Leadmine Road	Dept of Fish & Wildlife	OS-44
445 Leadmine Road	Dept of Fish & Wildlife	OS-45
446 Leadmine Road	Dept of Fish & Wildlife	OS-46
45 Glendale Road	Dept of Conservation & Recreation	OS-47
458 Leadmine Road	Dept of Fish & Wildlife	OS-48
471 Leadmine Road	Dept of Fish & Wildlife	OS-49
480 Leadmine Road	Dept of Fish & Wildlife	OS-50
485 Leadmine Road	Dept of Fish & Wildlife	OS-51
51 Glendale Road	Dept of Fish & Wildlife	OS-52
510 Route 15	Dept of Fish & Wildlife	OS-53
515 Leadmine Road	Dept of Fish & Wildlife	OS-54
520 Route 15	Dept of Fish & Wildlife	OS-55
62 Glendale Road	Dept of Fish & Wildlife	OS-56
75 Taylor Road	Dept of Fish & Wildlife	OS-57
85A Breakneck Road	Dept of Fish & Wildlife	OS-58
87A Breakneck Road	Dept of Fish & Wildlife	OS-59
89A Breakneck Road	Dept of Fish & Wildlife	OS-60
9 Badger Road	Dept of Fish & Wildlife	OS-61
90 Goodrich Road	Dept of Fish & Wildlife	OS-62
91A Breakneck Road	Dept of Fish & Wildlife	OS-63
97A Breakneck Road	Dept of Fish & Wildlife	OS-64
99 Podunk Road	Dept of Conservation & Recreation	OS-65
99 Walker Pond Road	Other Non V	OS-66
1 Cedar Lake Drive	Town Of Sturbridge	OS-67
10 Shattuck Road	Conservation Commission	OS-68
127A Stallion Hill Road	Conservation Commission	OS-69
13 Cross Road	Town Of Sturbridge	OS-70
153 Walker Pond Road	Town Of Sturbridge	OS-71
196 Leadmine Road	Town Of Sturbridge	OS-72
197 Brookfield Road	Conservation Commission	OS-73
197 Leadmine Road	Conservation Commission	OS-74

**TOWN OF STURBRIDGE OPEN SPACE AND RECREATION PLAN - 2018**

20 Stony Brook Drive	Conservation Commission	OS-75
200 Leadmine Road	Town Of Sturbridge	OS-76
234 Walker Road	Conservation Commission	OS-77
236 Walker Road	Conservation Commission	OS-78
25 Stony Brook Drive	Conservation Commission	OS-79
26 Stony Brook Drive	Conservation Commission	OS-80
27 Stony Brook Drive	Conservation Commission	OS-81
272 Mass Turnpike	Town Of Sturbridge	OS-82
277 New Boston Road	Conservation Commission	OS-83
278 Main Street	Town Of Sturbridge	OS-84
28 Stony Brook Drive	Conservation Commission	OS-85
30 Stony Brook Drive	Conservation Commission	OS-86
305 Brookfield Road	Town Of Sturbridge	OS-87
319 Brookfield Road	Town Education	OS-88
32 Cedar Lake Drive	Town Of Sturbridge	OS-89
32 Warren Road	Conservation Commission	OS-90
320 Brookfield Road	Town Education	OS-91
36 Shattuck Road	Conservation Commission	OS-92
42 Cedar Street	Town Education	OS-93
43 Old Mashapaug Road	Conservation Commission	OS-94
45 Burgess School Road	Town Education	OS-95
45 Champeaux Road	Conservation Commission	OS-96
46 Holland Road	Town Of Sturbridge	OS-97
469A Main Street	Town Of Sturbridge	OS-98
47 Finlay Road	Conservation Commission	OS-99
5 Regep Lane	Conservation Commission	OS-100
50 Holland Road	Town Of Sturbridge	OS-101
51 Holland Road	Conservation Commission	OS-102
52 Stallion Hill Road	Conservation Commission	OS-103
529 Leadmine Road	Town Of Sturbridge	OS-104
529 Main Street	Town Education	OS-105
547 Main Street	Town Education	OS-106
549 Main Street	Town Of Sturbridge	OS-107
55 Champeaux Road	Conservation Commission	OS-108
55 Holland Road	Town Of Sturbridge	OS-109
58 Cedar Street	Town Of Sturbridge	OS-110
60 Cedar Street	Town Of Sturbridge	OS-111
67 Clarke Road	Conservation Commission	OS-112
69 Route 84	Town Of Sturbridge	OS-113
7 Allen Road	Conservation Commission	OS-114
70 Cedar Street	Inhabitants of Sturbridge	OS-115
712 Main Street	Town Of Sturbridge	OS-116
75 Farquhar Road	Conservation Commission	OS-117
8 Regep Lane	Conservation Commission	OS-118

**TOWN OF STURBRIDGE OPEN SPACE AND RECREATION PLAN - 2018**

80 Route 15	Conservation Commission	OS-119
14 Audubon Way	Opacum Land Trust Inc	OS-120
37 Audubon Way	Opacum Land Trust Inc	OS-121
50 Bushnell Road	Opacum Land Trust Inc	OS-122
168 New Boston Road	Opacum Land Trust Inc	OS-123
1 Preserve Way	Opacum Land Trust Inc	OS-124
475 Leadmine Road	The Trustees Of Reservations	OS-125
479 Leadmine Road	The Trustees Of Reservations	OS-126
500 Leadmine Road	The Trustees Of Reservations	OS-127
62 Charlton Street	U S Army Corps Of Engineers	OS-128
215 Brookfield Road	U S Army Corps Of Engineers	OS-129
33 Champeaux Road	U S Army Corps Of Engineers	OS-130
65 Charlton Street	U S Army Corps Of Engineers	OS-131
55 Farquhar Road	U S Army Corps Of Engineers	OS-132
254 Main Street	U S Army Corps Of Engineers	OS-133
255 Main Street	U S Army Corps Of Engineers	OS-134
711 Main Street	U S Army Corps Of Engineers	OS-135
59 Mashapaug Road	U S Army Corps Of Engineers	OS-136
62 Mashapaug Road	U S Army Corps Of Engineers	OS-137
147 Route 84	U S Army Corps Of Engineers	OS-138
81 Wallace Road	U S Army Corps Of Engineers	OS-139
30 Warren Road	U S Army Corps Of Engineers	OS-140
19 Charlton Street	U S Army Corps Of Engineers	OS-141
229 Charlton Road	U S Army Corps Of Engineers	OS-142
236 Charlton Road	U S Army Corps Of Engineers	OS-143
18 Meadow View Lane	Sanctuary Homes LLC as Trustees	OS-144
23 Evergreen Lane	Sanctuary Homeowners	OS-145
14 Acorn Lane	Countryside Home Builders	OS-146
13 Draper Woods Road	T Reardon Builders	OS-147