

Section 5: Inventory of Lands of Conservation and Recreation Interest

Open space and recreational resources enhance the quality of life for residents and add to the appeal of a community. Legally protected open space is important so that as a community experiences growth, there will always be natural areas for humans and wildlife. Open Space helps provide crucial protection for our freshwater resources, and serves as the backbone for the local landscape for residents and visitors alike. It can consist of wildlife habitat, forests, freshwater ponds, lakes, streams, farms, vernal pools or even a ball park or trail system.

Open spaces provide habitat for native plants and animals that cannot live in urban and suburban environments. Large tracts are particularly important to native species and can create habitat areas which are typically undisturbed (relatively pristine) areas with good wildlife movement corridors, and provide optimal cover, food, and water resources. Open space can be used to preserve unique and sensitive natural features, including but not limited to the mountains and hills, large rock formations, native landscape, and archeological and historical sites.

Open spaces also provide recreational opportunities by providing suitable areas for hiking, biking, horseback riding, hunting, fishing, camping, and bird watching. Many of the things that help define the Town's character are associated with open space, including wooded areas, trail systems, and scenic vistas.

For the purposes of the Sturbridge Open Space and Recreation Plan Update, "Permanently" protected open space includes only land owned for conservation, passive recreation, watershed protection and wildlife habitat by the Town of Sturbridge, Federal and State agencies or non-profit organizations, and privately-owned land and other lands bound by conservation easements. "Temporary" and "limited" open space includes land covered by revocable restrictions against development or change in use. A forest land or recreational facility that is designated as Chapter Land is an example of temporarily protected open space. Limited-protection open space includes land uses such as cemeteries or ball fields that could,

TOWN OF STURBRIDGE OPEN SPACE & RECREATION PLAN - 2011

but are unlikely, to be redeveloped. “Unprotected” open space is land with no legal restrictions against future development.

A. Public Lands and Facilities

With nearly 1594.60 acres under its control, the Town is a major open space landowner in Sturbridge. A large percentage of these lands are under the care, custody and control of the Sturbridge Conservation Commission with 1,148 acres ± under its stewardship and an additional 275± acres owned by the Town of Sturbridge. Lands held by the Town include those for passive and active recreational uses, water protection and habitat protection purposes.

The recently acquired Riverlands consists of three parcels on Holland and Stallion Hill Roads containing nearly 141 acres with potential for recreation and habitat protection. The town has yet to develop a plan for the use of this property, but with its natural beauty and access to the Quinebaug River there is much potential. This parcel will also likely facilitate a connection to the Grand Trunk Trail currently under construction.



Photograph by Michele Moran

Another notable parcel is the land at 55 Champeaux Road. This property was taken by eminent domain by the Town for the purpose of open space and provides access to Long Pond. Known by some as the Champeaux Road fishing area; this is a handicapped accessible fishing area near the northern end of the reservoir along Champeaux Road. Facilities include a parking area, and two accessible fishing platforms on the shoreline of Long Pond. There is no fee for the use of this property.

TOWN OF STURBRIDGE OPEN SPACE & RECREATION PLAN - 2011



Photograph by Michele Moran

Other properties controlled by the town include several parcels taken for non-payment of taxes. Parcels located on Farquhar, Holland and Leadmine Roads have open space value since they are either adjacent to or in close proximity to other open space areas, and/or the parcel provides access to a resource area such as the Quinebaug River. At the current time there is no conservation restriction that would prevent the use of these parcels for another purpose.

As noted, the protected lands under the care custody and control of the Conservation Commission include 1,148 acres. A description of each of the properties and the management activities taking place on them are noted below.

TOWN OF STURBRIDGE OPEN SPACE & RECREATION PLAN - 2011

Conservation Commission Managed Open Space

Leadmine Mountain Conservation Land
(A.K.A. Old Sturbridge Village Conservation Land/Open Space)
826.37 Acres

Conservation Restriction held by the MA Division of Fisheries and Wildlife

In 2006 The Town of Sturbridge in Cooperation the MA Division of Fisheries and Wildlife purchased 826 acres of land from Old Sturbridge Village using Community Preservation Act Funds. The property is known in Sturbridge as the “Leadmine Mountain Conservation Land”, “Old Sturbridge Village Conservation Land”, and also, a portion is known as “Camp Robinson Crusoe”, an historic co-educational summer camp that was founded in 1928 by Josh Lieberman and operated within the Town of Sturbridge from 1932 to 1970 when the camp went bankrupt. The property is ecologically, geologically, and hydrologically unique and diverse containing Leadmine Mountain range, Hamant Brook and several other perennial and intermittent streams, ponds, vernal pools, and wetlands. Due to the Conservation Restriction on the property it is open to “in season” hunting, fishing and year round passive recreational use. Below is an excerpt from the MA Division of Fisheries and Wildlife describing the unique habitat and natural features on the property:

Vegetation:

This areas forest is predominantly mixed-hardwood. Steep slopes contain stands of hemlock, with thick mountain laurel along the slope base comprising the sub canopy of the area. In the valleys and riparian areas, red maple swamps and shrub swamps are prevalent.

Water:

There are several types of wetlands in the low areas between ridges, as well as intermittent streams. Two certified vernal pools are located just north of Leadmine Mountain.

Wildlife:

Deer, coyote, porcupine, bear, fisher, gray fox, beaver, ruffed grouse, turkey, and numerous non-game species. Pheasants are not stocked within this area.

(http://www.mass.gov/dfwele/dfw/habitat/maps/wma/centralwma/leadmine_mountain_wce.pdf)

TOWN OF STURBRIDGE OPEN SPACE & RECREATION PLAN - 2011

Trails

This property contains a significant number of trails, historic cart paths and logging/skid roads. Many of the trails have been mapped using GPS data downloaded and utilized to produce trail maps. Efforts to document trail routes on the property are ongoing.

In June of 2008 the Conservation Agent, with the assistance of Tom Chamberland, PLAC Member and Dave Aho, Town resident, prepared and submitted a Notice of Intent application for a number of trail and bridge projects on the Leadmine Mountain Property. An Order of Conditions was issued for the work included the installation of several bog bridges and footbridges. Since that time the Order of Conditions has been amended several times to include additional bridge repairs and replacements, culvert replacements, trail relocations and a proposed handicapped accessible parking area.

In early August of 2008, the Conservation Agent, in conjunction with the Grand Trunk Trail Blazers, applied for a grant from the American Hiking Society to improve trails at the Camp Robinson Crusoe/Leadmine Mountain Property and create a 1.8-mile Handicapped Accessible trail. In April of 2009, grant funds in the amount of \$5,000 were awarded to the Town and the Grand Trunk Trail Blazers. Grant funds have been used for the purchase of gravel. Work implementing the trail improvements will proceed in 2011 as planned in cooperation with the Grand Trunk Trail Blazers and associated town committees.

Since 2009 the Town has been working with Old Sturbridge Village to draft a trail easement for the handicapped accessible trail (noted above) and also for a proposed parking area off Old Sturbridge Village Road. The Parking Area and Trail Easements would allow the Town to designate a handicapped accessible access to the Leadmine Mountain Trails.

Forest Stewardship Plan Development

In early 2010, after almost a year of planning and development by the Conservation Commission the Department of Conservation and Recreation approved the Conservation Commissions Forest Stewardship Plan for the Leadmine Mountain Conservation Land. The plan, (a requirement of the Conservation Restriction) takes into consideration the forest resources on the property and outlines a 10-year management plan. The management plan as approved includes many important resource/forest management components including forest stand improvement, early successional habitat development, and invasive species treatments.

Forest Cutting Plan Development

Since the approval of the Forest Stewardship Plan the Conservation Commission has been working toward developing the first Forest Cutting Plan on the property. The Commission hopes to implement the plan in 2011.

TOWN OF STURBRIDGE OPEN SPACE & RECREATION PLAN - 2011

In 2010 the Leadmine Mountain Conservation Land was used for a community wide “Adopt-A-Trail Program” dedication ceremony attended by over 350 people. The property has also been used for several community forest walks organized to educate the public on the importance of Forest Management.

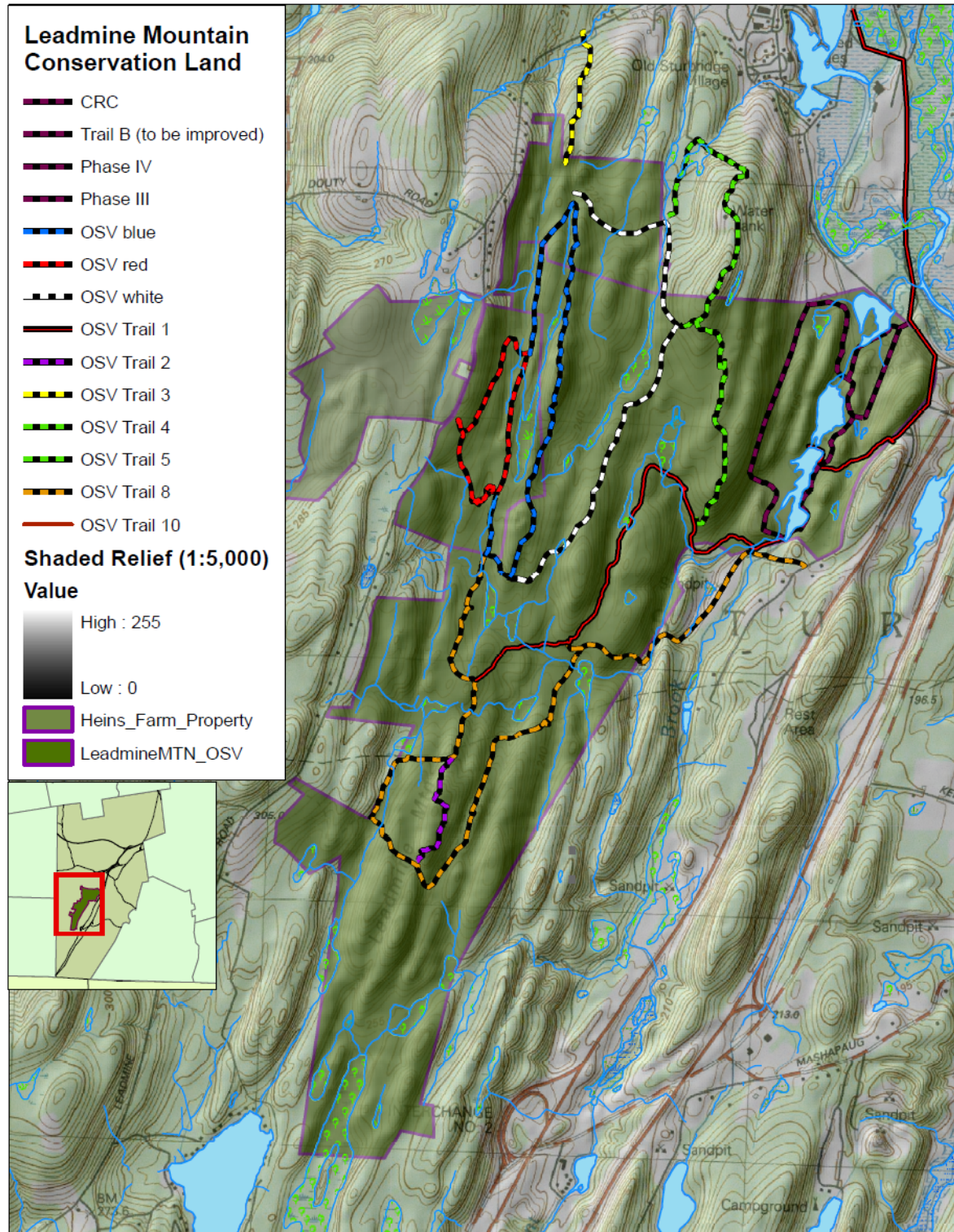


(Above) Adopt –A-Trail Program Dedication and Memorial Tree Planting



(Above left) Forest Stewardship Walk on 9/19/09 (Photos by E. Jacque)

TOWN OF STURBRIDGE OPEN SPACE & RECREATION PLAN - 2011



TOWN OF STURBRIDGE OPEN SPACE & RECREATION PLAN - 2011

Heins Farm Conservation Land 85 Acres

The 85 acre Heins Conservation Land was acquired by the Town of Sturbridge in 2006 and put under the care, custody and control of the Sturbridge Conservation Commission. The property was originally part of the neighboring Heins Family Farm (which is private property). The Heins Conservation Land is of great cultural and historic significance to Sturbridge. Passing through the property is the historic Stafford Turnpike, for which the 1.2 mile "Stafford Turnpike" trail is named. There is a historic marker on the site, which documents this important town landmark.

In addition to the Stafford Turnpike Trail, there are two additional walking/hiking trails on the property, the .5 mile Cabin Loop Trail and the .6 mile Pond View Loop Trail. All of the trails on this property have been constructed by volunteers, with donated materials, labor and funds. The trail system and trail maintenance is a testament to the hard work of the Trails Committee members, Public Lands Advisory Committee, and other volunteers.

Parking

There is a parking area located on Leadmine Road for visitors of the Heins Conservation Land. The parking area is located across the street from the Heins Conservation Land.

Land Management

In 2008 the Conservation Department applied for and received funds from the USDA Natural Resource Conservation Service for habitat restoration work at the Heins Conservation Land. The funds were received through the Wildlife Habitat Incentives Program (WHIP). The funds are for a 6.5 acre portion of the property that was an old field that became overgrown with invasive species like Japanese Barberry, Oriental Bittersweet, and Honeysuckle. In addition the field was becoming established with White Pine and other woody vegetation. A total amount of \$16,176 was awarded to be used over the course of an 8-year period for tree removal, brush hogging and spraying for invasive species.

The goal of this plan was to create what is called "early successional habitat" on the property, which is grassland and shrub land habitat. Early successional habitats are endangered in Massachusetts, as are many of the species that utilize them.

Since 2009 we have been working to administer the WHIP contract, and this has resulted in some changes in the landscape on the Heins Conservation Land. Please see the photographs below illustrating the changes.

TOWN OF STURBRIDGE OPEN SPACE & RECREATION PLAN - 2011



(Above) September 2009 - Prior to start of work



(Above) March 2010 - Post brush hogging



(Above) April 2010 - Post tree removal, pre clean-up

TOWN OF STURBRIDGE OPEN SPACE & RECREATION PLAN - 2011

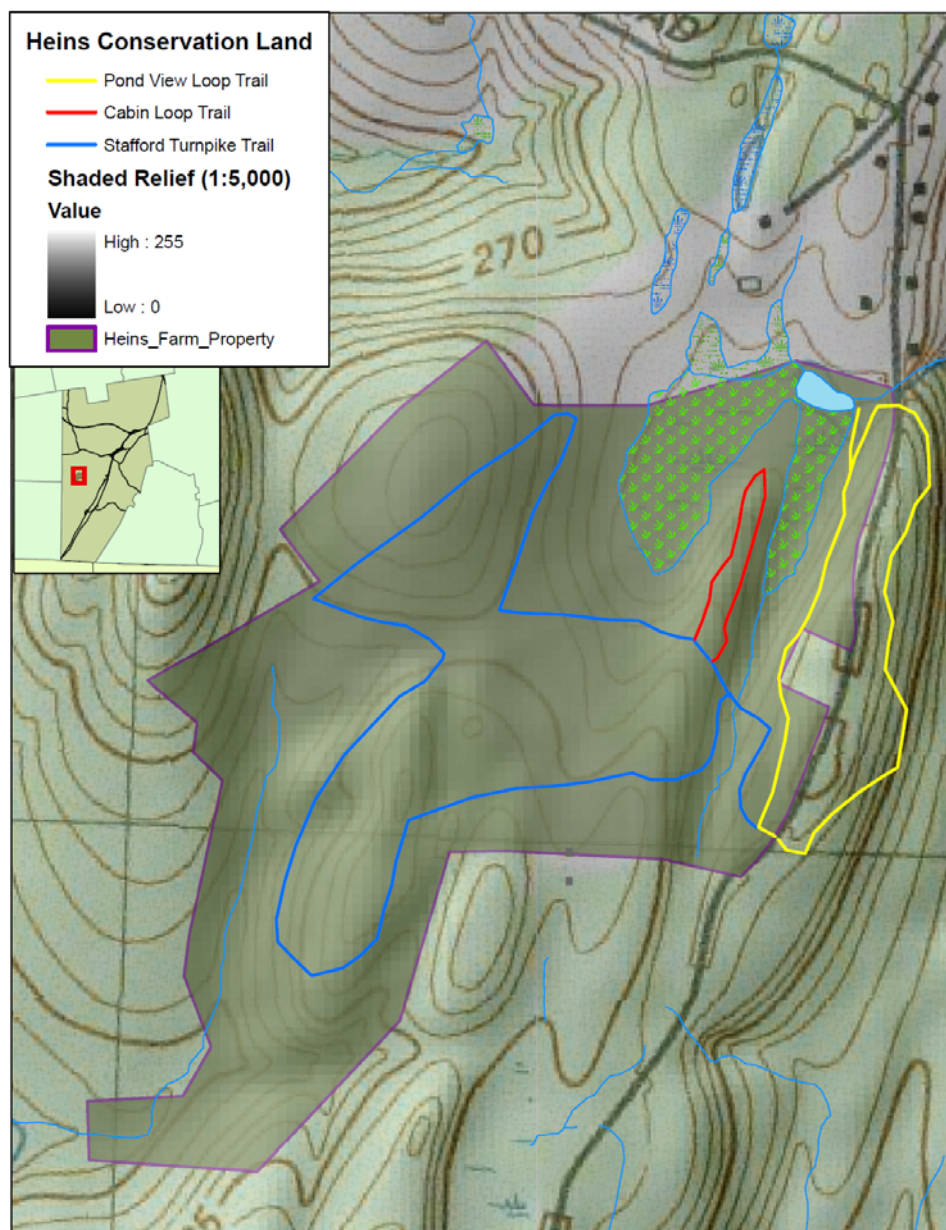


((Above) September 2010 Post Invasive Species Treatment



(Above left) Sturbridge Winter Tree Walk and Talk held December 18, 2010 (Above right) Interns Chris Spinney and Curtis Markham inspecting tree as part of the Winter Tree Scavenger Hunt held Winter 2010 (Photos by E. Jacque)

TOWN OF STURBRIDGE OPEN SPACE & RECREATION PLAN - 2011



TOWN OF STURBRIDGE OPEN SPACE & RECREATION PLAN - 2011

Stallion Hill Road Conservation Land 127A Stallion Hill Road

72.06 Acres

Property previously actively managed

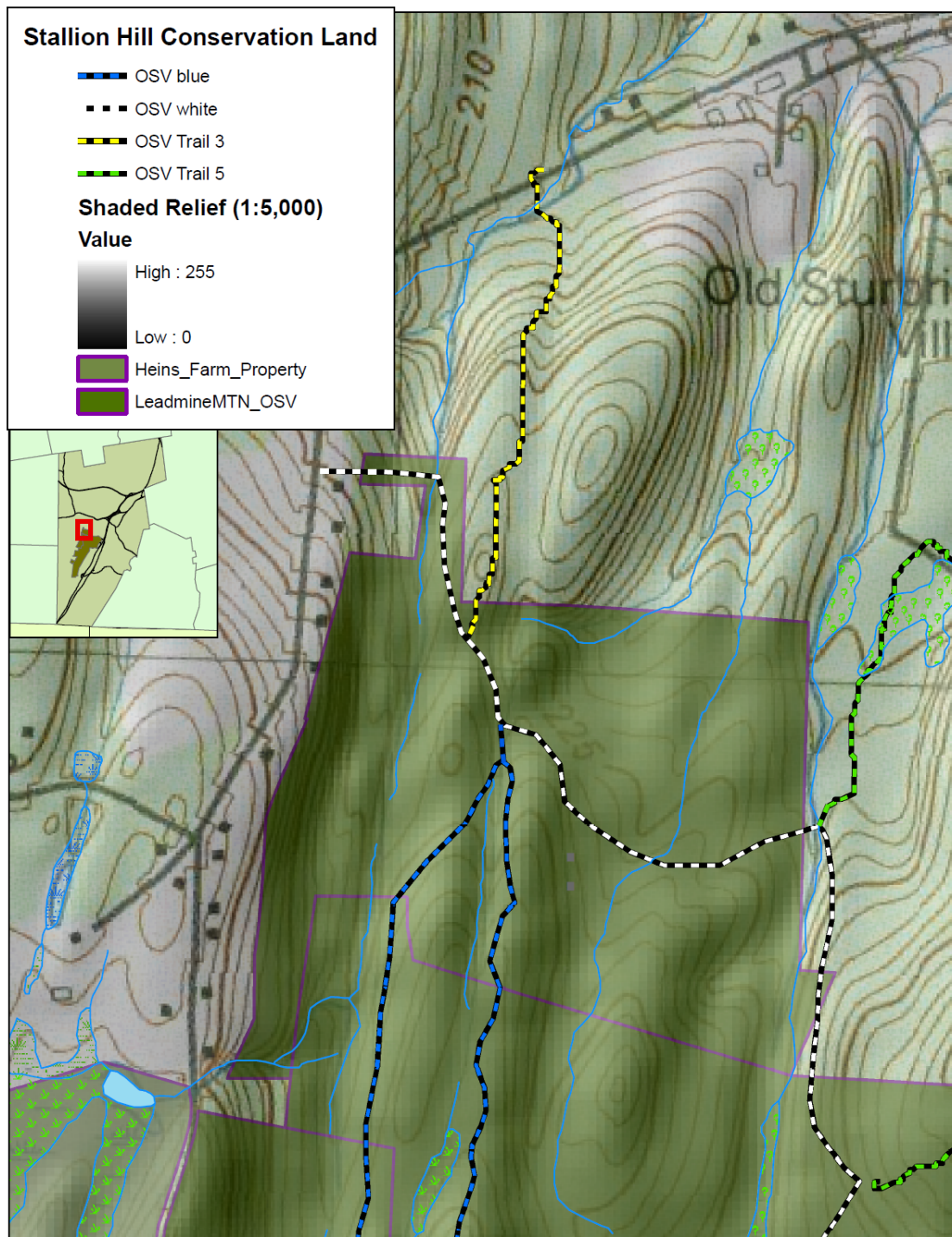
In 2002 the Town acquired the property known as the Stallion Hill Conservation Land. Acquisition was made possible with the use of the Lucent Gift Fund from the Board of Selectmen to the Conservation Commission and with funds from a Conservation Services Self-Help Grant for conservation, open space and passive recreation purposes. The land will be held in perpetuity as conservation land under the "Care, Custody and Control" of the Conservation Commission.

Upon acquisition of the property a Land Management Plan was prepared by the Conservation Commission. The Land Management Plan describes site conditions as relatively flat with rolling woodlands, and as having two streams, one perennial, one intermittent that flow through the property. Other features identified on the property are bordering vegetated wetlands, two potential vernal pools. Vegetation is described as primarily hardwood with Maple, Oak and White Pine, and there is a large amount of Mountain Laurel. Several unique geological rock outcroppings exist on the site as well as several glacial erratic boulders.

This property is being actively managed as part of the Leadmine Mountain Forest Stewardship Plan.



TOWN OF STURBRIDGE OPEN SPACE & RECREATION PLAN - 2011



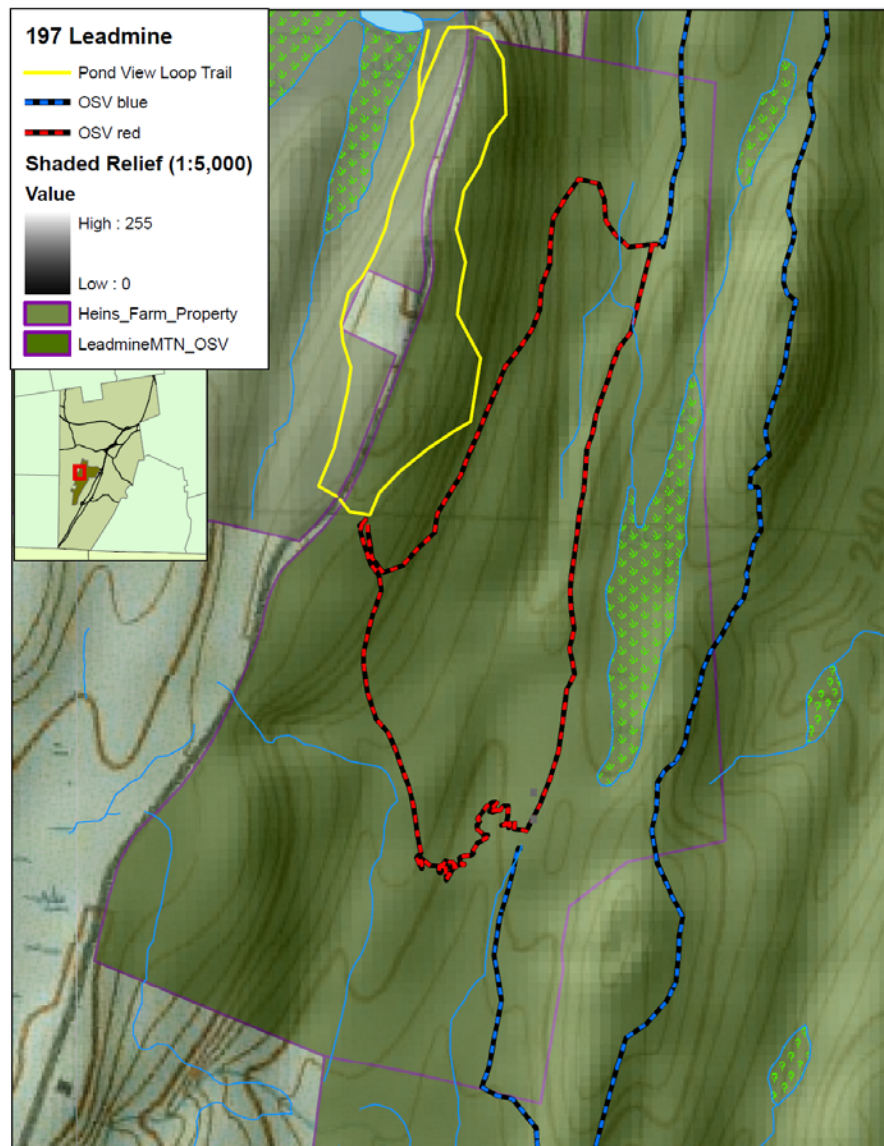
TOWN OF STURBRIDGE OPEN SPACE & RECREATION PLAN - 2011

197 Leadmine Road

96 Acres

This Property was acquired by the Conservation Commission through tax taking in late 2000. It directly abuts the Leadmine Mountain Conservation Land and is across the street from the Heins Farm Conservation Land. Trails on this property connect to both the Heins Farm Conservation Land and Leadmine Mountain Conservation Land. The designated parking area for the Heins Farm Conservation Land is located on this property. This property is being actively managed as part of the Leadmine Mountain Forest Stewardship Plan.

TOWN OF STURBRIDGE OPEN SPACE & RECREATION PLAN - 2011



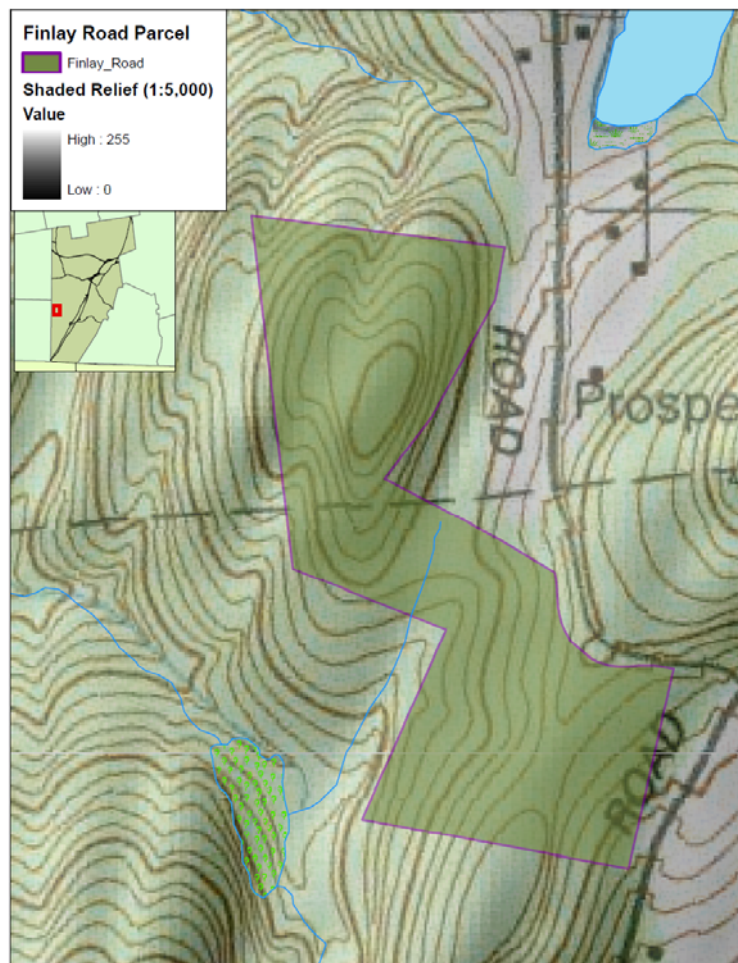
TOWN OF STURBRIDGE OPEN SPACE & RECREATION PLAN - 2011

47 Finlay Road

34.14 Acres

Acquired by the Conservation Commission in 2000, 47 Finlay Road was formerly managed and under the control of the Board of Selectmen. The property was originally acquired by the Town through tax taking in 1994.

In October of 2005, the Conservation Commission obtained an Urban Forest Planning and Education Grant from the Massachusetts Department of Conservation and Recreation. The grant was used to fund the establishment of a Forest Stewardship Plan on the property. The Conservation Commission had planned to prepare and complete a Forest Cutting Plan on the property, however to date a proposed cut on the site would not generate enough income to pay for the cost of the cut. Until timber markets improve it is likely no Forest cutting Plan will be implemented on the site.



TOWN OF STURBRIDGE OPEN SPACE & RECREATION PLAN - 2011

Shephard Parcel - #80 Route 15

8.52 Acres

This property was purchased by the Town of Sturbridge with Community Preservation Act Funds in December of 2004. The property was purchased “for open space conservation purposes, to be managed and controlled by the Conservation Commission.”

In 2006 discussions began exploring whether the land as acquired could be utilized for the purposes of recreation fields. Since that time the Conservation Commission has granted its approval to the Recreation Committee to explore options on the site for recreational fields, provided that no structures are installed on the site. The Commission is cognizant of the sensitive resource areas on the property (including protected Riverfront Area and Estimated Habitats for Rare and Endangered Species). The Conservation Commission has and will continue to work with the Recreation Committee to offer guidance on plan development.

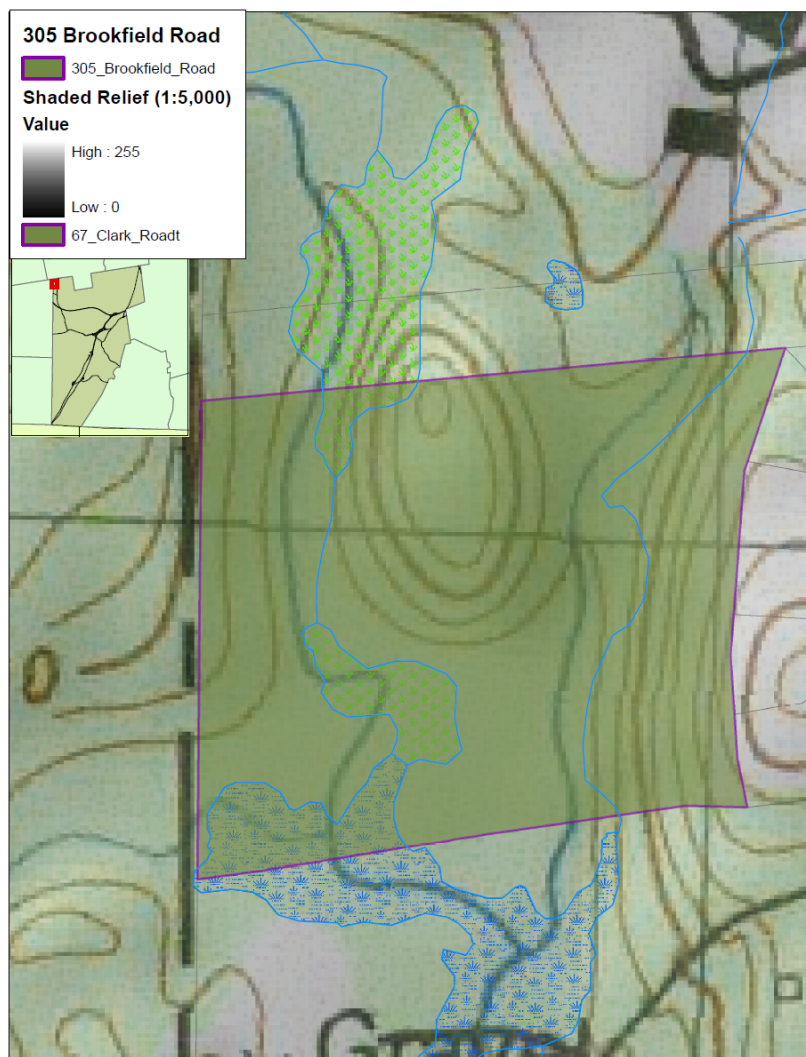


TOWN OF STURBRIDGE OPEN SPACE & RECREATION PLAN - 2011

Brook Hill Open Space Parcel 305 Brookfield Road

24.19 Acres

This property was acquired by the Conservation Commission in 2005 for One Dollar (\$1.00) from Brook Hill Development, LLC. The property was acquired as Open Space Land as part of the Brook Hill Subdivision. The property is presently land locked and contains a flowage easement. There is no active open space management taking place on this parcel.

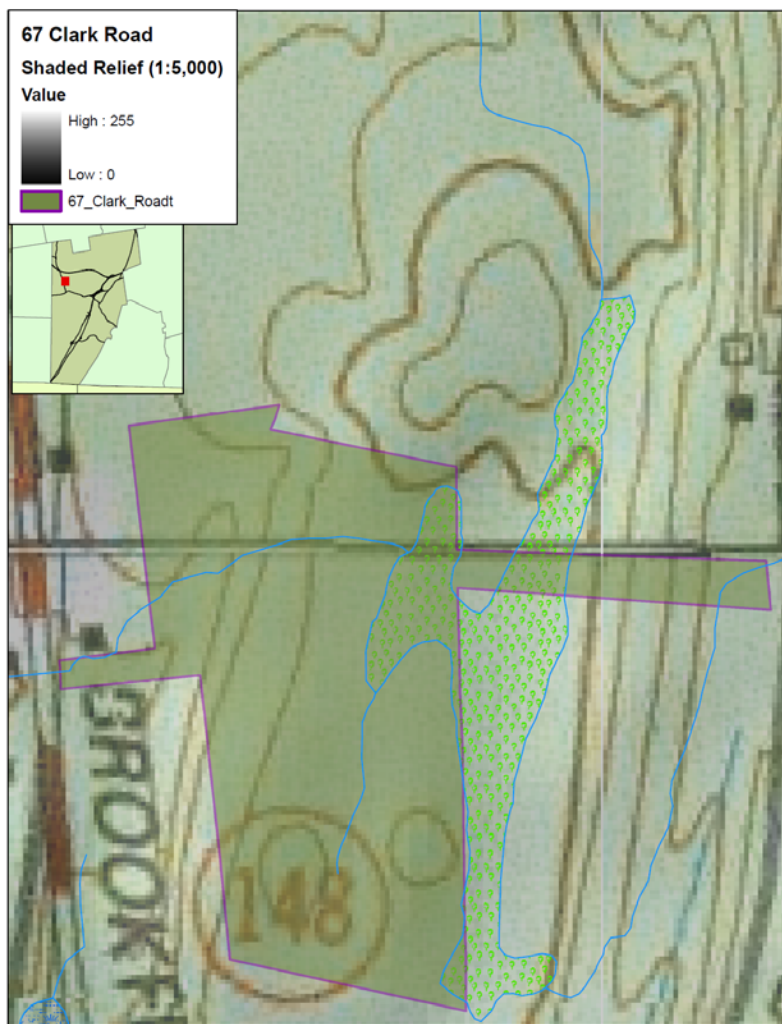


TOWN OF STURBRIDGE OPEN SPACE & RECREATION PLAN - 2011

67 Clark Road

13.67 Acres

In 2002 the Conservation Commission acquired this property for One Hundred Dollars (\$100.00) from CMG Development Corp. The property is an undeveloped parcel of open space which receives drainage from surrounding lots in the subdivision (per easement) and also from catch basins off Brookfield Road. The property was acquired by the Commission due to the presence of wetlands and upland habitat areas.



State Owned and Managed Open Space

Another large landholder is the Division of Fisheries and Wildlife (DFWELE) with over 1500 ± acres of protected open space under its control within the Town of Sturbridge. While the DFWELE controls many small parcels scattered throughout town, they also have several sizeable wildlife management areas located in the Town of Sturbridge and adjoining communities.

These include the following:

Breakneck Brook Wildlife Management Area

This Wildlife Management Area is located both in the Town of Sturbridge and Town of Southbridge. The total acreage is 1,233 acres with 686.80 acres located within the Town of Sturbridge. The land is generally rough terrain including ridges, valleys and hills. There is parking access off Breakneck Road on the western side of the area.

VEGETATION: Mixed hardwood and conifer forest interspersed with a few wooded swamps and small areas of open marsh.

WATER: Breakneck Brook bisects the area and is stocked with trout. Beavers may impound portions of this brook and a smaller brook in the western sector of the area.

WILDLIFE: Grouse, deer, woodcock, raccoon, gray squirrel, turkey, aquatic fur-bearers and numerous nongame species. This area is stocked with pheasant¹⁷.

Leadmine Wildlife Management Area

Located in the Towns of Sturbridge and Brimfield, this area consists of five parcels totaling 826.35 acres (527.33 acres within the Town of Sturbridge) of generally rough terrain and moderately sloped ridge and hilltop. This area is located on the border between the Connecticut Valley and Central Wildlife Districts. The original Wildlife Management Area consisted of two parcels totaling 640 acres. However in 2009, the Division acquired an additional 186.35 acres within the Town of Sturbridge.

¹⁷

[HTTP://WWW.MASS.GOV/DFWELE/DFW/HABITAT/MAPS/WMA/CENTRALWMA/BREAKNECKBROOKWMA.PDF](http://www.mass.gov/dfwele/dfw/habitat/maps/wma/centralwma/breakneckbrookwma.pdf)

TOWN OF STURBRIDGE OPEN SPACE & RECREATION PLAN - 2011

The property was acquired for the purpose of permanent protection, management and enhancement of wildlife and wildlife habitat and to allow compatible wildlife associated recreational uses.

VEGETATION: Mixed hardwood forest with some scattered hemlock and white pine.

WATER: This area is adjacent to Leadmine Pond, which is stocked with trout. There is rough, limited access to this pond.

WILDLIFE: Grouse, deer, bear, raccoon, gray squirrel, turkey, coyote, grouse and numerous nongame species. This area is stocked with pheasant¹⁸.

McKinstry Brook Wildlife Management Area

This 347 acre Wildlife Management Area is located within the Towns of Sturbridge (148.29 acres) and Southbridge.

Vegetation: The forest is mostly comprised of mixed hardwoods. In low areas, along the brook are also stands of hemlock and alder thickets.

Water: McKinstry Brook, a cold water brook containing native trout, bisects the area. There are several perennial streams flowing from the west that feed the brook. Some of these streams are subject to impoundment from beavers. In the north portion of the property, there are also wooded wetlands.

Wildlife: Beaver, mink, river otter, muskrat, coyote, deer, fisher, ruffed grouse, turkey and numerous non-game species. Pheasants are not stocked within this area¹⁹.

Wolf Swamp Wildlife Management Area

The majority of this 887 acre Wildlife Management Area is located within the Town of Brookfield, but a substantial amount, 128.37 acres is located within the Town of Sturbridge. The Division of Fisheries and Wildlife website²⁰ contains little information on this area with the

¹⁸ <http://www.mass.gov/dfwele/dfw/habitat/maps/wma/centralwma/leadminewma.pdf>

¹⁹ <http://www.mass.gov/dfwele/dfw/habitat/maps/wma/centralwma/mckinstrybrookwma.pdf>

²⁰ <http://www.mass.gov/dfwele/dfw/habitat/maps/wma/centralwma/wolfswampwma.pdf>

TOWN OF STURBRIDGE OPEN SPACE & RECREATION PLAN - 2011

exception of a map and total acreage. However, the Town of Brookfield Heritage Landscape Inventory Report contains some additional information about this area.²¹

B. Private Open Space Lands and Facilities

Augmenting the publicly-owned open space lands are approximately 487 ± acres of land with varying degrees of legal protection against development. These lands are owned by The Opacum Land Trust and the Trustees for Reservations. There is also open space contained within subdivisions that is still held by the developers of the land.

The Opacum Land Trust owns 322 acres of land which includes the Preserve, First Acre Swamp and The Gaumond Sanctuary. According to the Opacum Land Trust website, Opacum Woods is a permanently protected conservation area owned and stewarded by the Opacum Land Trust. There are about four miles of hiking trails on this 266-acre property, named after the colors with which they are marked: Blue, Red, Yellow and Green. The walking trails at Opacum Woods traverse a variety of habitats as well as some interesting historical features.

Opacum Woods was donated to Opacum Land Trust in June of 2003 by Robert Moss & Brendon Properties as part of the subdivision approval process of The Preserve. The land contains forested land including woodland ponds, swamps, vernal pools, historic and prehistoric sites, and habitat for some rare and some not-so-rare species. The Massachusetts Department of Conservation and Recreation, holds a Conservation Easement on Opacum Woods http://www.opacumlt.org/opacum_woods.html.

First Acres Swamp was purchased by Opacum in 2001. This property contains 26.77 acres on Bushnell Road and it abuts Wells State Park on Bushnell Road. This land is a beautiful wetland and is also the headwaters of a tributary into Walker Pond. Protecting First Acres protects the water quantity and quality of this watershed. More information on this property can be found on the Opacum website at the following http://www.opacumlt.org/first_acres_swamp.html.

The Herve & Mary Jane Gaumond Memorial Sanctuary is located on New Boston Road. This 30 acre parcel was donated to Opacum Land Trust in 2002. The property is beautiful and contains upland woods and vernal pools providing critical habitat for 2 state listed rare species. This parcel is contiguous with Opacum Woods. http://www.opacumlt.org/podunk_woods.html

²¹ <http://www.brookfieldma.us/assets/pdfs/brookfield.pdf>

TOWN OF STURBRIDGE OPEN SPACE & RECREATION PLAN - 2011

The Trustees of Reservations owns the Tantisques Crowd Sites located on Leadmine Road. This site is comprised of three separate parcels and contains 54.31 acres. According to the Trustees website Tantisques (“tan-te-us-quays”) is a Nipmuc word meaning “to a black deposit between two hills”. The Tantisques site was the center of one of New England's first mining operations.

The Nipmuc originally mined here for graphite to make ceremonial paints. In 1644, John Winthrop, Jr., son of the first governor of the Massachusetts Bay Colony, purchased the mine with hopes of extracting lead and iron. In the early 19th century, Captain Joseph Dixon and his son worked here before founding the J. D. Crucible Company of New Jersey, famous manufacturers of pencils.

Today, careful observers can see the mine cuts, ditches, and tailings piles made by the various mining operations. The mineshaft that tunnels into the face of the low ridge is the most recent of all the excavations, dating to 1902. Most of the mining at Tantisques was of the open trench variety. The cut along the top of the ridge is the partially filled-in remainder of what was once a several thousand foot-long trench, 20 to 50 feet in depth and roughly 6 feet in width, which followed the vein of graphite.

A short loop trail leads through quiet woods; a spur trail passes through the Leadmine Wildlife Management Area and ends at the Robert Crowd Site. Visitors can view the foundations of the house and barn of the African-American and Native American man who worked at the mine in the 1850s²².

Conservation Restrictions

In addition to the Conservation Restrictions discussed in the Town Owned Lands narrative, the following private lands within the Town of Sturbridge have Conservation Restrictions (CR):

Property Common Name	Property Owner	Holder of the CR	Acreage
McKinstry Brook WCE	Matthew Sosik	Division of Fisheries and Wildlife	20.98
McKinstry Brook WCE	Thomas and Jane Hardy	Division of Fisheries and Wildlife	31
McKinstry Brook WCE	Brian and Amy Galonek	Division of Fisheries and Wildlife	5.433

²² [HTTP://WWW.THETRUSTEES.ORG/PLACES-TO-VISIT/CENTRAL-MA/TANTIUSQUES.HTML](http://www.thetrustees.org/places-to-visit/central-ma/tantiusques.html)

TOWN OF STURBRIDGE OPEN SPACE & RECREATION PLAN - 2011

Property Common Name	Property Owner	Holder of the CR	Acreage
Breakneck Brook WCE (no public access)	William Hull	Division of Fisheries and Wildlife	176
Breakneck Brook WCE (no public access)	William Hull	Division of Fisheries and Wildlife	526

C. Recreation Facilities

Natural resources in Sturbridge offer valuable passive recreation opportunities. Lakes and ponds are widely used and available for the public use. Big Alum Lake offers public boat ramp access. Brimfield and Sturbridge residents have boat ramp and beach access to the East Bromfield Lake. Natural quiet settings along streams and ponds and within state parks provide idyllic camping experiences. There are several campgrounds in Sturbridge that draw campers in from areas of the region and beyond. East of Interstate 84 in the southern section of Town there are two campgrounds and to the north there is one within the Wells State Park. Hemlock Ridge Golf Course, an open-to-the-public, nine-hole course, offers active recreation as well.

Largest recreational sites and activities:

Wells State Park - Wells State Park is a popular 1,600-acre woodland park owned and managed by the Department of Conservation & Recreation. There are sixty campsites located in the Park. The park provides the perfect setting for outdoor recreational uses and the two principal activities are camping and hiking. In addition, Walker Pond provides a peaceful setting for fishing, canoeing, and swimming. The swimming beach is for campers' use only. During the summer, Wells has an interpretive program available which provides guided walks, hikes, recreational activities and evening campfire programs. More than ten miles of trails cross the property, which are for hiking only; off-road vehicles may not be used. Equestrian use is permitted within the park. A popular route leads to the scenic vista at Carpenter Rocks from which the eastern section and Walker Pond can be viewed.

Westville Dam - This 525 ± acre facility is located within the Towns of Sturbridge and Southbridge. Owned and managed by the US Army Corps of Engineers, this facility offers baseball/softball, bicycling, boating-non motor, cross country skiing, football/soccer, fresh water fishing, general play, hiking, nature observing, organized event, picnicking, sightseeing and walking/jogging. There is a large picnic/recreation area, with two picnic shelters located near the south end of the lake. The entrance is on Wallace Road in Sturbridge, near the Quinebaug river bridge. A boat ramp is also located in the recreation area. Camping and swimming are not permitted at this facility.

TOWN OF STURBRIDGE OPEN SPACE & RECREATION PLAN - 2011

The property contains several trails too. A 1.8-mile (2.9 km) loop trail, known as the Westville Lake Community trail, circles the lake. It is open to all non-motorized use. It can be accessed from the recreation area, the dam site parking lot, and the Wallace Road trailhead. The Heritage walking trail, starts at the dam site and heads north along the river to nearby West Street School in Southbridge. The Grand Trunk Trail, which follows the grade of the never completed [Southern New England Railway](#), leads 1.1 miles (1.8 km) from the recreation area to River Road in Sturbridge. The western half of the Community Trail loop follows this railbed as well. Lastly, a 3/4 mile trail is also available in the Hobbs Brook area of the project, with a trailhead off Hall Road in Sturbridge²³.

The trails, including the dam site and Wallace Road parking areas, are open year-round from sunrise to sunset.

A canoe launching area and fishing area is located along Old Mashapug Road west of the recreation area. Canoeists can paddle up the Quinebaug River as far as Turner's Club Field in the village of Fiskdale, approx. 5 miles (8.0 km) upstream. Old Mashapug Road is open to vehicles during daylight hours from the opening of fishing season in April to the Sunday after Labor Day.

(Note: active recreation fields are leased to the Town of Southbridge for their municipal recreation and league activities. Use during spring is limited due to flooding).



Westville Dam

Streeter Point Recreation Area

This 140 acre plus site is owned by the Army Corp of Engineers and operated by the Department of Environmental Management. A popular regional draw, this accessible area has

²³ <http://corpslakes.usace.army.mil/visitors/projects.cfm?Id=E619780>

TOWN OF STURBRIDGE OPEN SPACE & RECREATION PLAN - 2011

a 100 car parking area and offers fishing, swimming and picnicking on 400 acre East Brimfield Reservoir. Boating access is from the US Army Corps of Engineers maintained ramps on Route 20.

Cedar Lake Recreation Area – Owned and operated by the Town, this 14 plus acre site offers tennis courts, a basketball court, a skateboard park, a waterfront swimming area, picnic tables and a playground.

Outdoor World - Privately owned and operated, this 222 acre facility off of Mashapaug Road offers bicycling, boating (both motorized and non-motorized), camping, fresh water fishing, freshwater swimming, hiking, and picnicking. It is important to note that there is no protection on this substantial recreational parcel.

Yogi Bear Campground - Privately owned and operated, this 76 acre facility off of River Road offers overnight camping, boating, swimming, picnicking and a clubhouse. It is important to note that there is no protection on this substantial recreational parcel.

Old Sturbridge Village, Inc. – Located on 392 acres, this privately owned and operated, this historic New England village setting offers organized events, opportunities to observe nature, natural history, and sightseeing.

Hamilton Rod & Gun - Privately owned and operated, this 155 acre facility offers boating (motorized and non-motorized), fresh water fishing, general play, hunting, nature observing, picnicking and target archery.

Hemlock Golf Course - This is a privately owned and operated golf course set on 128 acres.

Tantasqua Regional Junior/Senior School - Part of the regional school district, Tantasqua offers baseball/ softball, basketball, football/soccer, general play, hiking, ice-skating, picnicking and tennis. The school building is new and many of its recreation facilities have been substantially renovated. Both the school and the town utilize the facilities at this 46 plus acre site.



TOWN OF STURBRIDGE OPEN SPACE & RECREATION PLAN - 2011

Burgess Elementary School - The Burgess Elementary School Renovation Project is currently underway. When complete this 19 plus acre property will contain three regulation size ball fields and an overlay field. A new updated playground and basketball court will also be on site.

Turner's Field – Town-owned and operated, this 2.90 acre site contains facilities for baseball and soccer.

Highway Barn Fields – Town-owned and operated, this 35.70 acre site contains facilities for softball, soccer and a little league field with two regulation size ball field and one overlay non-regulation size soccer field.

Future Fields - The Recreation Committee has hired a Consultant to work with it to develop plans for new athletic fields to help serve the increasing recreational needs of the Town. While still in the design phase, preliminary plans call for new fields to be constructed on the Shepard Parcel on Route 15. At this time the proposal calls for the construction of three regulation size ball fields and one multi-purpose overlay field, a boat launch ramp and a fitness trail. The proposal also calls for the expansion of facilities at the Highway Barn Fields to include two new ball fields, two new multi-purpose fields, two basketball courts, a playground and a bocce court.

Sturbridge Trails

The following goals were clearly defined in the Sturbridge 2005 Open Space and Recreation Plan under the Trails section:

- a. Complete process of planning and preserving trail and greenbelt corridors;
- b. Incorporate trails, greenbelt and buffer requirements in local bylaws and regulations.; and
- c. Develop trails for jogging, biking or walking, working towards a network connecting various greenway corridors.

When the 2005 plan was written, there was not a Town Trail Committee. However, the town did have two representatives on the Grand Trunk Trail Regional Committee along with members from Southbridge, Opacum Land Trust, the Grand Trunk Trail Blazers, and the US Army Corp of Engineers.

A Trails Committee was established in 2009 and this group is responsible for trail maintenance, construction and planning within the community on our public lands. Additionally, this group has been charged with working closely with state and federal groups to develop trails on their land. The new committee is made up of five members and five associate members.

TOWN OF STURBRIDGE OPEN SPACE & RECREATION PLAN - 2011

Additionally, a Recreational Trail Master Plan Steering Committee was formed to work to develop a master plan for all trails in Sturbridge. Their charter is to develop a town wide open space lands trail network plan that connects our open space parcels to residential areas, schools, and businesses. A Request for Proposals was issued and the submissions are being reviewed and rated at the time of this writing.

There has been almost universal support for trails within Sturbridge which is evidenced by the large group of volunteers that help build and maintain these trails. Each year thousands of hours are volunteered by local residents. At town meetings voters have approved funding to develop trails and to provide matching funds for grants that have been awarded to the Town by groups such as Massachusetts Department of Conservation and Recreation (DCR), US Army Corp of Engineers (USACE), the Last Green Valley (LGV), Nature Valley Co., Savers Bank, and the Federal Department of Transportation through their Transportation Enhancement (TE) program. The total amount of grants for trails in Sturbridge thus far is over \$600,000.

There are four major Trail Work Days each year: Spring Trail Day in April; National Trails Day in June; National Public Lands Day in September; and Make a Difference Day in October. For each trail day there are several sites where volunteers can come and help to build or maintain trails or celebrate trails with events like interpretive trail walks, adopt-a-trail events (sponsored by the Conservation Commission) geo-caching, or bike tours. Local businesses often provide equipment, materials, and refreshments. We typically attract 50-80 people in town, young and old for these work/celebration days.

Existing Trails

Grand Trunk Trail

The major trail in Sturbridge is the 6 mile Grand Trunk Trail (GTT) that travels east-west through town mostly on the old railbed for the Southern New England Railway, a division of the Grand Trunk Railway of Canada. The railway was intended to connect the Central Vermont Railway (also owned by the Grand Trunk Railway) in Palmer, MA to a new port in Providence, RI. The railbed through Massachusetts was completed but rails were never laid and bridges were never finished as the biggest supporter in the company went down with the Titanic in 1912. The railroad is often referred to as the Titanic Railway and the 70 mile trail that follows its path from Palmer, MA to Franklin, MA is named the Titanic Trail (www.titanicrailtrail.org).

The GTT starts on the eastern border of Sturbridge and Southbridge at the Westville Dam, one of Sturbridge's largest Open Space parcels owned by the United States Army Corp. of Engineers (USACE). The trail continues west along the river on USACE land and easements from cooperating residents. In some places, development has encroached on the former railbed and the trail detours around these areas, often on town-owned parcels. The trail connects to

TOWN OF STURBRIDGE OPEN SPACE & RECREATION PLAN - 2011

another of Sturbridge's largest Open Space parcel, the former Camp Robinson Crusoe (a.k.a. Arbutus Park, Leadmine Mountain 'Wildlife Conservation Easement, et al) owned jointly by the Town of Sturbridge and the Massachusetts Department of Fish & Wildlife (DFW).

The next section of the trail runs 7,000 feet along the Sturbridge town-owned Riverlands Open Space parcel to Holland Road. There it connects with the Sturbridge Trolley Trail which was developed several years ago by the Sturbridge Lions Club and recently received a grant from the Last Green Valley to upgrade the surface to 10 foot wide stone dust trails. The Trolley Trail connects to the USACE property at East Brimfield Dam and the trail continues from there south along Long Pond where some day it will connect with Brimfield trails.

The GTT is intended for all non-motorized users including bikers, walkers, baby strollers, people in wheelchairs, users with mobility issues, equestrians and more. As such, the grade is very flat at less than 2% for most of it. The trail is ten feet wide with no overhanging elements less than 12 feet (the height required by a horse and rider).

Currently the GTT has 2 of the 6 miles completed to final level including the Ed Calcutt Bridge over the Quinebaug. The most recent 1.2 miles were finished with a \$150,000 cooperative grant from DCR (\$35K), USACE (\$65K), and the Town of Sturbridge for (\$50K) or \$24 per foot of finished trail. The next mile from the Ed Calcutt Bridge to Farquhar Road is currently under design and the TE funding has been released to the town and we have received the order to proceed. This trail will be more expensive per foot as it crosses endangered species habitat where more sensitive design and boardwalks will increase the cost. Approximately 2 more miles are under public control and are passable, but not up to the full trail conditions standard. The final 1 1/4 miles through Sturbridge are still in the proposed and planning stages.

Heins Farm Trails

The Heins Farm Conservation land was acquired by the town using Open Space funding from the Community Preservation Act. The parcel is approximately 85 acres with some of largest contiguous pasture lands in town.

The Worcester-Stafford Turnpike, a toll road used by stagecoaches in the 1800's passes through this property and is often the destination for historic interpretive walks. Originally the property had several miles of trails formerly used as snowmobile and ATV trails. Many of these trails were not built for sustainability and were never intended for use by walkers, joggers, equestrians and wheelchairs. A plan was developed to close some trails, reroute others, and build new sections to provide users and the town with 2.1 miles of enjoyable and easily maintained trails. The trail average width is 6' and has either a stone dust or natural surface, except where it goes through pastures. One of the trails is an ABA Rule Compliant Trail and another is a Universally Accessible Trail.

TOWN OF STURBRIDGE OPEN SPACE & RECREATION PLAN - 2011

Most of the work on the three trails was done by individual volunteers and local businesses, with materials either donated or acquired by the town. Prior to dedication of the Heins Farm Trails, the total amount of materials donated and volunteer labor was approximately \$35,000. Since then, that much or more has been donated to improve the trails further and do boundary marking and signage.

Leadmine Mountain Conservation Area - Arbutus Trail

Leadmine Mountain Conservation Area is another large Open Space Parcel acquired by the Town with CPA funding and in partnership with Division of Fisheries and Wildlife (DFW). The first trail being developed is a universally accessible trail that circumnavigates the three ponds along Hamant Brook and passes through the former Camp Robinson Crusoe. Details about this project can be found in the accessibility section of the plan starting on page 118. The buildings and other structures have been removed and interpretive panels featuring the details of this site will educate users about this historic Boys & Girls Summer Camp.

Trail and bridge work on the property has been done by local businesses and volunteers including the Carpentry Class at Tantasqua Regional High School. Funding and materials for the project were donated, provided by the town, or acquired with a grant from the American Hiking Society & Nature Valley Co.

There are approved plans for a parking lot on the property near the OSV rear access gate. This parking lot can also be used by GTT users as the trail passes by the property at this location.

PROTECTED LAND INVENTORY

The listing of protected lands is contained on the following pages. The open space map follows this section.



TOWN OF STURBRIDGE OPEN SPACE & RECREATION PLAN - 2011

Table 1- Lands Under Special Taxation Programs

Property Name/Owner	Managing Agency	Property Address	Assessor Parcel #	Acreage	Chapter Type	Property Use	Funds Used	Condition	Recreation Potential	Public Access	Protection
Hemlock Golf Course	Marc Palmer	220 Holland Road	348-03214-220	128.00 AC	CHAP61_61B	Golf Course	Private	N/A	Excellent	Fee	Short Term
Hull Forestlands	Hull Forestlands LP	85 Taylor Road	635-04818-085	55.00 AC	CHAPTER 61	Open Space/Habitat Prot/Recreation	Private	N/A	N/A	None	Short Term
Hull Forestlands	Hull Forestlands LP	91 Taylor Road	635-04556-091	30.00 AC	CHAPTER 61	Open Space/Habitat Prot/Recreation	Private	N/A	N/A	None	Short Term
Barry P. & April A. Gingras	Same as owner	21 High Street	335-02411-021	24.35 AC	CHAPTER61	Forestry Restriction	Private	N/A	N/A	None	Short Term
Bernard and Joan Szugda	Same as owner	208 Arnold Road	123-01042-208	84.08 AC	CHAPTER61	Forestry Restriction	Private	N/A	N/A	None	Short Term
Breakneck Ridge Inc.	Same as owner	16 Cross Road	237-04756-016	75.54 AC	CHAPTER61	Forestry Restriction	Private	N/A	N/A	None	Short Term
Clay and Linda Cocalis	Same as owner	110 McGilpin Road	432-02657-110	74.66 AC	CHAPTER61	Private Property	Private	N/A	N/A	None	Short Term
David & Amy Oulette	Same as owner	256 Walker Pond Road	662-00721-256	54.57 AC	CHAPTER61	Forestry Restriction	Private	N/A	N/A	None	Short Term
Mappleback and Margaret White	Same as owner	281 Cedar Street	202-01016-281	12.43 AC	CHAPTER61	Forestry Restriction	Private	N/A	N/A	None	Short Term
Gerald Roy Suprenant	Same as owner	177 Podunk Road	520-00842-177	16.78 AC	CHAPTER61	Forestry Restriction	Private	N/A	N/A	None	Short Term
Hamilton Rod & Gun Club	Same as owner	246 Cedar Street	202-01527-246	10.38 AC	CHAPTER61	Forestry Restriction	Private	N/A	N/A	None	Short Term

TOWN OF STURBRIDGE OPEN SPACE & RECREATION PLAN - 2011

Property Name/Owner	Managing Agency	Property Address	Assessor Parcel #	Acreage	Chapter Type	Property Use	Funds Used	Condition	Recreation Potential	Public Access	Protection
Holly Tremblay	Same as owner	338 New Boston Road	455-00638-338	32.92 AC	CHAPTER61	Forestry Restriction	Private	N/A	N/A	None	Short Term
Howard and Shelly Kelly	Same as owner	200 Fiske Hill Road	280-02615-200	33.68 AC	CHAPTER61	Forestry Restriction	Private	N/A	N/A	None	Short Term
Howard and Shelly Kelly	Same as owner	188 Fiske Hill Road	280-02624-188	5.17 AC	CHAPTER61	Forestry Restriction	Private	N/A	N/A	None	Short Term
Hull Forestlands	Same as owner	155 Breakneck Road	170-05028-155	332.00 AC	CHAPTER61	Forestry Restriction/CR	Private	N/A	N/A	None	Short Term
Hull Forestlands	Same as owner	115 Breakneck Road	170-05414-115	22.00 AC	CHAPTER61	Forestry Restriction/CR	Private	N/A	N/A	None	Short Term
Hull Forestlands	Same as owner	117 Breakneck Road	170-05425-117	6.00 AC	CHAPTER61	Forestry Restriction/CR	Private	N/A	N/A	None	Short Term
Hull Forestlands	Same as owner	83 South Road Road	595-04652-083	15.25 AC	CHAPTER61	Forestry Restriction/CR	Private	N/A	N/A	None	Short Term
Hull Forestlands	Same as owner	87 Taylor Road	635-04548-087	70.06 AC	CHAPTER61	Forestry Restriction/CR	Private	N/A	N/A	None	Short Term
Iris Jennings	Same as owner	205C Podunk Pike	518-00825-205C	25.85 AC	CHAPTER61	Forestry Restriction	Private	N/A	N/A	None	Short Term
Kevin Palmer	Same as owner	52A Streeter Road	613-02733-52A	28.55 AC	CHAPTER61	Forestry Restriction	Private	N/A	N/A	None	Short Term
Marc Palmer	Same as owner	119 Holland Road	348-03225-119	22.00 AC	CHAPTER61	Forestry Restriction	Private	N/A	N/A	None	Short Term

TOWN OF STURBRIDGE OPEN SPACE & RECREATION PLAN - 2011

Property Name/Owner	Managing Agency	Property Address	Assessor Parcel #	Acreage	Chapter Type	Property Use	Funds Used	Condition	Recreation Potential	Public Access	Protection
Marc Palmer	Same as owner	224B Holland Road	348-03234-224B	14.00 AC	CHAPTER61	Forestry Restriction	Private	N/A	N/A	None	Short Term
Mary Szyszkiewicz	Same as owner	281 Holland Road	348-03632-281	42.57 AC	CHAPTER61	Forestry Restriction	Private	N/A	N/A	None	Short Term
Ralph Warrington	Same as owner	221 Cedar Street	202-01536-221	2.38 AC	CHAPTER61	Forestry Restriction	Private	N/A	N/A	None	Short Term
Ralph Warrington	Same as owner	23 Cooper Road	226-02015-023	8.05 AC	CHAPTER61	Forestry Restriction	Private	N/A	N/A	None	Short Term
Ralph Warrington	Same as owner	24 Cooper Road	226-02015-024	50.79 AC	CHAPTER61	Forestry Restriction	Private	N/A	N/A	None	Short Term
Reed and Therese Hillman	Same as owner	43 Bushnell Road	183-01216-043	1.02 AC	CHAPTER61	Forestry Restriction	Private	N/A	N/A	None	Short Term
Robert D. Waraika Jr.	Same as owner	220 Cedar Street	202-01547-220	37.60 AC	CHAPTER61	Forestry Restriction	Private	N/A	N/A	None	Short Term
Robert Para	Same as owner	121 Paradise Lane	505-00447-121	48.03 AC	CHAPTER61	Forestry Restriction	Private	N/A	N/A	None	Short Term
Roland and Lori Leclerc	Same as owner	227 Brookfield Road	173-01433-227	15.70 AC	CHAPTER61	Forestry Restriction	Private	N/A	N/A	None	Short Term
Sherri Pelski	Same as owner	80 Leadmine Lane	398-04035-080	15.94 AC	CHAPTER61	Forestry Restriction	Private	N/A	N/A	None	Short Term
Sturbridge Properties Inc.	Same as owner	2 Falls Road Ext.	268-01736-002	21.51 AC	CHAPTER61	Forestry Restriction	Private	N/A	N/A	None	Short Term

TOWN OF STURBRIDGE OPEN SPACE & RECREATION PLAN - 2011

Property Name/Owner	Managing Agency	Property Address	Assessor Parcel #	Acreage	Chapter Type	Property Use	Funds Used	Condition	Recreation Potential	Public Access	Protection
Sturbridge Properties Inc.	Same as owner	2 Walker Pond Road	660-01746-002	55.36 AC	CHAPTER61	Forestry Restriction	Private	N/A	N/A	None	Short Term
Thomas & Patricia Buell	Same as owner	176 Podunk Road	520-00841-176	23.34 AC	CHAPTER61	Forestry Restriction	Private	N/A	N/A	None	Short Term
William Sudjak	Same as owner	72 Shattuck Road	570-03734-072	80.16 AC	CHAPTER61	Forestry Restriction	Private	N/A	N/A	None	Short Term
Alfred and Mary Davis	Same as owner	261 Holland Road	348-03652-261	29.57 AC	CHAPTER61A	Agricultural Preservation	Private	N/A	N/A	None	Short Term
Anthony Piergallini & Michele Doucette	Same as owner	27 Ladd Road	375-01326-027	20.77 AC	CHAPTER61A	Recreation Restriction	Private	N/A	N/A	None	Short Term
Carrington	Same as owner	11 Ladd Road	375-01324-011	24.21 AC	CHAPTER61A	Agricultural Preservation	Private	N/A	N/A	None	Short Term
Carrington	Same as owner	10 Ladd Road	375-01335-010	13.89 AC	CHAPTER61A	Agricultural Preservation	Private	N/A	N/A	None	Short Term
Carrington	Same as owner	16 Ladd Road	375-01345-016	5.26 AC	CHAPTER61A	Agricultural Preservation	Private	N/A	N/A	None	Short Term
Carrington	Same as owner	20 Ladd Road	375-01345-020	8.00 AC	CHAPTER61A	Agricultural Preservation	Private	N/A	N/A	None	Short Term
Carrington	Same as owner	26 Ladd Road	375-01355-026	6.00 AC	CHAPTER61A	Agricultural Preservation	Private	N/A	N/A	None	Short Term
Carrington	Same as owner	30 Ladd Road	375-01355-030	23.20 AC	CHAPTER61A	Agricultural Preservation	Private	N/A	N/A	None	Short Term

TOWN OF STURBRIDGE OPEN SPACE & RECREATION PLAN - 2011

Property Name/Owner	Managing Agency	Property Address	Assessor Parcel #	Acreage	Chapter Type	Property Use	Funds Used	Condition	Recreation Potential	Public Access	Protection
Dawn Suminski	Same as owner	30 Whittemore Road	680-02937-030	18.23 AC	CHAPTER61A	Agricultural Preservation	Private	N/A	N/A	None	Short Term
Debra Gardiner	Same as owner	14 Douty Road	245-02717-014	102.8 AC	CHAPTER61A	Agricultural Preservation	Private	N/A	N/A	None	Short Term
Debra Gardiner	Same as owner	50 Douty Road	245-02717-050	138.73 AC	CHAPTER61A	Agricultural Preservation	Private	N/A	N/A	None	Short Term
Edward & Nancy Cloutier	Same as owner	40 Wallace Road	665-03931-040	15.82 AC	CHAPTER61A	Agricultural Preservation	Private	N/A	N/A	None	Short Term
Edward & Nancy Cloutier	Same as owner	38 Wallace Road	665-03932-038	3.00 AC	CHAPTER61A	Agricultural Preservation	Private	N/A	N/A	None	Short Term
Edward Cloutier	Same as owner	151 Shepard Road	575-03848-151	5.26 AC	CHAPTER61A	Agricultural Preservation	Private	N/A	N/A	None	Short Term
John & Sherrie Rouse	Same as owner	21 South Road	595-04252-021	103.50 AC	CHAPTER61A	Agricultural Preservation	Private	N/A	N/A	None	Short Term
John and Jane Freeman	Same as owner	221 Brookfield Road	173-01433-221	9.16 AC	CHAPTER61A	Agricultural Preservation	Private	N/A	N/A	None	Short Term
John Holdcraft	Same as owner	44 Allen Road	110-00634-044	20.24 AC	CHAPTER61A	Agricultural Preservation	Private	N/A	N/A	None	Short Term
John W. & Elizabeth Scott	Same as owner	4 Shumway Hill Road	583-02758-004	13.00 AC	CHAPTER61A	Agricultural Preservation	Private	N/A	N/A	None	Short Term
K. Tourtellotte Trustee	Same as owner	318 Leadmine Road	400-03257-318	4.19 AC	CHAPTER61A	Agricultural Preservation	Private	N/A	N/A	None	Short Term

TOWN OF STURBRIDGE OPEN SPACE & RECREATION PLAN - 2011

Property Name/Owner	Managing Agency	Property Address	Assessor Parcel #	Acreage	Chapter Type	Property Use	Funds Used	Condition	Recreation Potential	Public Access	Protection
K. Tourtellotte Trustee	Same as owner	317 Leadmine Road	400-03258-317	36.00 AC	CHAPTER61A	Agricultural Preservation	Private	N/A	N/A	None	Short Term
Keren Dupre	Same as owner	237 Holland Road	348-03234-237	49.05 AC	CHAPTER61A	Agricultural Preservation	Private	N/A	N/A	None	Short Term
Keren Dupre	Same as owner	241 Holland Road	348-03254-241	14.24 AC	CHAPTER61A	Agricultural Preservation	Private	N/A	N/A	None	Short Term
Mark & Cecil Norwood	Same as owner	33 Putnam Road	530-00312-033	99.45 AC	CHAPTER61A	Agricultural Preservation	Private	N/A	N/A	None	Short Term
Mary Melissa Pratt	Same as owner	11 Lake Road	380-01511-011	12.77 AC	CHAPTER61A	Agricultural Preservation	Private	N/A	N/A	None	Short Term
Matthew and Janice Sosik	Same as owner	99 Arnold Road	123-02023-099	84.35 AC	CHAPTER61A	Agricultural Preservation	Private	N/A	N/A	None	Short Term
Michael & Janice Scheffler	Same as owner	56 South Road	595-04622-056	121.00 AC	CHAPTER61A	Agricultural Preservation	Private	N/A	N/A	None	Short Term
Robert & Judith Moyhagh	Same as owner	181 Podunk Road	520-00831-181	129.00 AC	CHAPTER61A	Agricultural Preservation	Private	N/A	N/A	None	Short Term
Robert & Judith Moyhagh	Same as owner	198 Podunk Road	520-00831-198	71.00 AC	CHAPTER61A	Agricultural Preservation	Private	N/A	N/A	None	Short Term

TOWN OF STURBRIDGE OPEN SPACE & RECREATION PLAN - 2011

Property Name/Owner	Managing Agency	Property Address	Assessor Parcel #	Acreage	Chapter Type	Property Use	Funds Used	Condition	Recreation Potential	Public Access	Protection
Robert & Kenneth Kaszowski	Same as owner	227 Podunk Road	520-00343-227	7.00 AC	CHAPTER61A	Agricultural Preservation	Private	N/A	N/A	None	Short Term
Robert & Kenneth Kaszowski	Same as owner	236 Podunk Road	520-00343-236	166.76 AC	CHAPTER61A	Agricultural Preservation	Private	N/A	N/A	None	Short Term
Fred Grimshaw	Same as owner	253 Breakneck Road	170-05325-253	6.50 AC	CHAPTER61B	Recreation Restriction	Private	N/A		None	Short Term
Hamilton Rod & Gun Club	Same as owner	24 Hamilton Road	318-01632-024	138.00 AC	CHAPTER61B	Recreation Restriction	Private	N/A	High	None	Short Term
Hamilton Rod & Gun Club	Same as owner	233 New Boston Road	455-01613-233	6.24 AC	CHAPTER61B	Recreation Restriction	Private	N/A	High	None	Short Term
James Andrews III	Same as owner	294 Leadmine Road	400-03238-294	5.61 AC	CHAPTER61B	Recreation Restriction	Private	N/A	N/A	None	Short Term
James Andrews III	Same as owner	298 Leadmine Road	400-03238-298	2.21 AC	CHAPTER61B	Recreation Restriction	Private	N/A	N/A	None	Short Term
James Andrews III	Same as owner	300 Leadmine Road	400-03248-300	9.40 AC	CHAPTER61B	Recreation Restriction	Private	N/A	N/A	None	Short Term
John Kearns	Same as owner	274 Brookfield Road	173-00923-274	30.00 AC	CHAPTER61B	Recreation Restriction	Private	N/A	N/A	None	Short Term
Palmer Family Trust	Same as owner	66 Westwood Drive	678-02121-066	11.48 AC	CHAPTER61B	Recreation Restriction	Private	N/A	N/A	None	Short Term
Tim and Tina Piette	Same as owner	266 Holland Road	348-03612-266	32.58 AC	CHAPTER61B	Recreation Restriction	Private	N/A	N/A	None	Short Term

TOWN OF STURBRIDGE OPEN SPACE & RECREATION PLAN - 2011

Property Name/Owner	Managing Agency	Property Address	Assessor Parcel #	Acreage	Chapter Type	Property Use	Funds Used	Condition	Recreation Potential	Public Access	Protection
Walker Pond Association	Same as owner	58 Old Village Road	493-01715-058	10.00 AC	CHAPTER61B	Recreation Restriction	Private	N/A	Private Use	None	Short Term
Walker Pond Association Land	Same as owner	53 Wells Park Road	675-01724-053	13.16 AC	CHAPTER61B	Recreation Restriction	Private	N/A	Private Use	None	Short Term
Walker Pond Association Land	Same as owner	37 Wells Park Road	675-01744-037	30.14 AC	CHAPTER61B	Recreation Restriction	Private	N/A	Private Use	None	Short Term

TOWN OF STURBRIDGE OPEN SPACE & RECREATION PLAN - 2011

Table 2- Town Owned Lands

Open Space Name	Owner/Manager	Address	Assessor Parcel #	Acreage	Use	Funds Used	Condition	Recreation Potential	Public Access	Protection	Zoning *
Leadmine WCE	Town of Sturbridge Cons Comm	36 Shattuck Road	570-03347-036	12.40 AC	Open Space/Recreation/Habitat Protection	DFWELE_CPA	Excellent	Medium	Free	Perpetuity	RR
Long Pond Access	Town of Sturbridge	55 Champeaux Road	206-01912-055	59.47 AC	Long Pond Access	CPA/Town	Excellent	High	Free	Perpetuity	RR
The Riverlands	Town of Sturbridge	55 Holland Road	348-02716-055	40.28 AC	Open Space/Recreation/Habitat Protection	CPA	Good	High	Free	Perpetuity	RR
The Riverlands	Town of Sturbridge	51 Holland Road	348-02717-051	28.63 AC	Open Space/Recreation/Habitat Protection	CPA	Good	High	Free	Perpetuity	RR
Walker Pond Access	Town of Sturbridge	153 Walker Pond Road	660-01244-153	2.40 AC	Walker Pond Access	Town	Fair	High	Free	Perpetuity	RR
The Riverlands	Town of Sturbridge	52 Stallion Hill Road	605-02454-052	71.66 AC	Open Space/Habitat Prot/Recreation	Town	Good	High	Free	Perpetuity	RR
Water Department	Town of Sturbridge Water Dept	375 Main Street	415-02448-375	7.56 AC	Water Dept.	Town	Good	High	None	Perpetuity	SR
Water Department	Town of Sturbridge Water Dept	44 Shattuck Road	570-03356-044	40.30 AC	Facilities and Well # 4	Town	Good	High	None	Perpetuity	RR
197 Leadmine	Town of Sturbridge Cons Comm	197 Leadmine Road	400-03321-197	96.00 AC	Open Space/Recreation/Habitat Protection	Tax Taking	Good	High	Free	Perpetuity	RR
67 Clark Road	Town of Sturbridge Cons Comm	67 Clark Road	215-01948-067	13.67 AC	Open Space	Tax Taking	Good	High	Free	Perpetuity	SR

*RR = Rural Residential, SR= Suburban Residential, C= Commercial, SU = Special Use District, HC = Historic Commercial

TOWN OF STURBRIDGE OPEN SPACE & RECREATION PLAN - 2011

Open Space Name	Owner/Manager	Address	Assessor Parcel #	Acreage	Use	Funds Used	Condition	Recreation Potential	Public Access	Protection	Zoning *
Ballard Property	Town of Sturbridge Cons Comm	127A Stallion Hill Road	605-02823-127A	72.06 AC	Open Space/Habitat Prot/Recreation	Private(Lucent Gift Fund) and Self Help Grant	Excellent	High	Free	Perpetuity	RR
Brook Hill	Town of Sturbridge Cons Comm	305 Brookfield Road	173-00442-305	24.19 AC	Subdivision Open Space	Private	Good	Low	Free	Perpetuity	RR
Finlay Property	Town of Sturbridge Cons Comm	47 Finlay Road	276-03644-047	34.14 AC	Forest Cutting Plan	Tax Taking	Good	Low	Free	Perpetuity	RR
Heins Farm	Town of Sturbridge Cons Comm	200 Leadmine Road	400-03228-200	85.00 AC	Open Space	CPA	Excellent	High	Free	Perpetuity	RR
Leadmine Mountain/ OSV Land Acquisition	Town of Sturbridge Cons Comm	10 Shattuck Road	570-03337-010	813.97 AC	Open/Habitat Protection	DFWELE_CPA	Excellent	High	Free	Perpetuity	RR
Shepard Parcel	Town of Sturbridge Cons Comm	80 Route 15	552-02952-080	8.52 AC	Potential Recreation Fields	CPA	Excellent	High	Free	Perpetuity	RR
46 Holland Road	Town of Sturbridge	46 Holland Road	348-02716-046	4.88 AC	Open Space	Town	Good	Medium	Free	Perpetuity	RR

*RR = Rural Residential, SR= Suburban Residential, C= Commercial, SU = Special Use District, HC = Historic Commercial

TOWN OF STURBRIDGE OPEN SPACE & RECREATION PLAN - 2011

Table 3- Federally Owned Lands

Open Space Name	Owner/Manager	Address	Assessor Parcel #	Acreage	Use	Funds Used	Condition	Recreation Potential	Public Access	Protection	Zoning *
East Brimfield Lake	US Army Corp of Engineers	215 Brookfield Road	173-01432-215	2.45 AC	Recreation/Flood Control	Federal	Excellent	High	Free	Art. 97	RR
East Brimfield Lake	US Army Corp of Engineers	33 Champeaux Road	206-01924-033	63.93 AC	Recreation/Flood Control	Federal	Excellent	High	Free	Art. 97	RR/SR
East Brimfield Lake	US Army Corp of Engineers	30 Warren Road	668-00932-030	49.08 AC	Recreation/Flood Control	Federal	Excellent	High	Free	Art. 97	RR
Hobbs Brook Conservation Area	US Army Corp of Engineers	65 Charlton Street	209-02547-065	0.67 AC	Habitat/Recreation/Flood Control	Federal	Excellent	High	Free	Perpetuity	C
Hobbs Brook Conservation Area	US Army Corp of Engineers	62 Charlton Street	209-02556-062	35.26 AC	Habitat/Recreation/Flood Control	Federal	Excellent	High	Free	Perpetuity	SR/C
Hobbs Brook Conservation Area	US Army Corp of Engineers	254 Main Street	415-02925-254	27.44 AC	Habitat/Recreation/Flood Control	Federal	Excellent	High	Free	Perpetuity	SR
Streeter Point Rec Area	US Army Corp of Engineers/DCR	711 Main Street	415-02342-711	140.95 AC	State Park	Federal	Excellent	High	Free	Perpetuity	SR/RR
Westville Lake Rec Area	US Army Corp of Engineers	55 Farquhar Road	270-03434-055	118.59 AC	Recreation/Flood Control	Federal	Excellent	High	Free	Perpetuity	SR/RR
Westville Lake Rec Area	US Army Corp of Engineers	255 Main Street	415-02925-255	123.06 AC	Recreation/Flood Control	Federal	Excellent	High	Free	Perpetuity	HC/SR
Westville Lake Rec Area	US Army Corp of Engineers	59 Mashapaug Road	423-04212-059	16.19 AC	Recreation/Flood Control	Federal	Excellent	High	Free	Perpetuity	RR

*RR = Rural Residential, SR= Suburban Residential, C= Commercial, SU = Special Use District, HC = Historic Commercial

TOWN OF STURBRIDGE OPEN SPACE & RECREATION PLAN - 2011

Open Space Name	Owner/Manager	Address	Assessor Parcel #	Acreage	Use	Funds Used	Condition	Recreation Potential	Public Access	Protection	Zoning *
Westville Lake Rec Area	US Army Corp of Engineers	62 Mashapaug Road	423-04212-062	4.08 AC	Recreation/Flood Control	Federal	Excellent	High	Free	Perpetuity	SU
Westville Lake Rec Area	US Army Corp of Engineers	45 Old Mashapaug Road	485-04236-045	29.65 AC	Recreation/Flood Control	Federal	Excellent	High	Free	Perpetuity	RR
Westville Lake Rec Area	US Army Corp of Engineers	100 Route 15	552-03422-100	122.00	Recreation/Flood Control	Federal	Excellent	High	Free	Perpetuity	SU/SR
Westville Lake Rec Area	US Army Corp of Engineers	81 Wallace Road	665-03952-081	69.44AC	Recreation/Flood Control	Federal	Excellent	High	Free	Perpetuity	SR
Westville Lake Rec Area	US Army Corp of Engineers	236 Charlton Road	208-02527-236	1.92 AC	Recreation/Flood Control	Federal	Excellent	High	Free	Perpetuity	SR
Westville Lake Rec Area	US Army Corp of Engineers	229 Charlton Road	208-02527-229	1.51 AC	Recreation/Flood Control	Federal	Excellent	High	Free	Perpetuity	SR
Westville Lake Rec Area	US Army Corp of Engineers	147 Route 84	550-03412-147	71.08	Recreation/Flood Control	Federal	Excellent	High	Free	Perpetuity	RR

*RR = Rural Residential, SR= Suburban Residential, C= Commercial, SU = Special Use District, HC = Historic Commercial

TOWN OF STURBRIDGE OPEN SPACE & RECREATION PLAN - 2011

Table 4 - State Owned Lands

Open Space Name	Owner/Manager	Address	Assessor Parcel #	Acreage	Use	Funds Used	Condition	Recreation Potential	Public Access	Protection	Zoning*
17 Woodlawn Drive	COMMONWEALTH OF MASS DEM	17 Woodlawn Drive	694-01753-017	0.66 AC	Open Space	State	Good	Low	Free	ART97	RR
278 New Boston Road	COMMONWEALTH OF MASS/DEPT. OF NATURAL RESOURCES	278 New Boston Road	455-01135-278	7.41 AC	Open Space	State	Good	Low	Free	ART97	RR
9 Badger Road	STATE-DFWELE	9 Badger Road	127-04423-009	0.50 AC	Open Space/Habitat Prot/Recreation	State	Good	Low	Free	ART97	RR
Big Alum P.A.	COMMONWEALTH OF MASS	303 Clark Road Ext.	216-01447-303	0.75 AC	GREAT POND PUBLIC ACCESS	State	Good	Medium	Free	ART97	SR
Breakneck Brook WMA	STATE-DFWELE	85A Breakneck Road	170-04812-085A	31.96 AC	Open Space/Habitat Prot/Recreation	DFWELE	Excellent	High	Free	ART97	RR
Breakneck Brook WMA	STATE-DFWELE	97A Breakneck Road	170-04813-097A	50.73 AC	Open Space/Habitat Prot/Recreation	DFWELE	Excellent	High	Free	ART97	RR
Breakneck Brook WMA	STATE-DFWELE	87A Breakneck Road	170-04825-087A	63.17 AC	Open Space/Habitat Prot/Recreation	DFWELE	Excellent	High	Free	ART97	RR
Breakneck Brook WMA	STATE-DFWELE	143 Breakneck Road	170-04842-101	91.12 AC	Open Space/Habitat Prot/Recreation	DFWELE	Excellent	High	Free	ART97	RR
Breakneck Brook WMA	STATE-DFWELE	89A Breakneck Road	170-04844-089A	28.23 AC	Open Space/Habitat Prot/Recreation	DFWELE	Excellent	High	Free	ART97	RR
Breakneck Brook WMA	STATE-DFWELE	91A Breakneck Road	170-04845-091A	29.93 AC	Open Space/Habitat Prot/Recreation	DFWELE	Excellent	High	Free	ART97	RR

TOWN OF STURBRIDGE OPEN SPACE & RECREATION PLAN - 2011

Open Space Name	Owner/Manager	Address	Assessor Parcel #	Acreage	Use	Funds Used	Condition	Recreation Potential	Public Access	Protection	Zoning*
Breakneck Brook WMA	STATE-DFWELE	105A Breakneck Road	170-05115-105A	71.34 AC	Open Space/Habitat Prot/Recreation	DFWELE	Excellent	High	Free	ART97	RR
Breakneck Brook WMA	STATE-DFWELE	103A Breakneck Road	170-05116-103A	8.00 AC	Open Space/Habitat Prot/Recreation	DFWELE	Excellent	High	Free	ART97	RR
Breakneck Brook WMA	STATE-DFWELE	113A Breakneck Road	170-05124-113A	36.39 AC	Open Space/Habitat Prot/Recreation	DFWELE	Excellent	High	Free	ART97	RR
Breakneck Brook WMA	STATE-DFWELE	107A Breakneck Road	170-05136-107A	53.19 AC	Open Space/Habitat Prot/Recreation	DFWELE	Excellent	High	Free	ART97	RR
Breakneck Brook WMA	STATE-DFWELE	109A Breakneck Road	170-05144-109A	8.95 AC	Open Space/Habitat Prot/Recreation	DFWELE	Excellent	High	Free	ART97	RR
Breakneck Brook WMA	STATE-DFWELE	111A Breakneck Road	170-05144-111A	47.57 AC	Open Space/Habitat Prot/Recreation	DFWELE	Excellent	High	Free	ART97	RR
Breakneck Brook WMA	STATE-DFWELE	123 Breakneck Road	170-05423-123	0.11 AC	Open Space/Habitat Prot/Recreation	DFWELE	Excellent	High	Free	ART97	RR
Breakneck Brook WMA	STATE-DFWELE	125 Breakneck Road	170-05424-125	31.00 AC	Open Space/Habitat Prot/Recreation	DFWELE	Excellent	High	Free	ART97	RR
Breakneck Brook WMA	STATE-DFWELE	131 Breakneck Road	170-05424-131	0.10 AC	Open Space/Habitat Prot/Recreation	DFWELE	Excellent	High	Free	ART97	RR
Breakneck Brook WMA	COMMONWEALTH OF MASS	119 Breakneck Road	170-05425-119	0.11	Open Space/Habitat Prot/Recreation	State	Good	High	Free	ART97	RR
Breakneck Brook WMA	STATE-DFWELE	75 Taylor Road	635-04848-075	135.00 AC	Open Space/Habitat Prot/Recreation	DFWELE	Excellent	High	Free	ART97	RR
Island at Big Alum	COMMONWEALTH OF MASSACHUSETTS	334 Paradise Lane	505-00946-334	0.81 AC	Island At Big Alum	State	Fair	Low	Free	ART97	RR
Leadmine Island	COMMONWEALTH OF MASS	90 Goodrich Road	309-04434-090	0.34 AC	Leadmine Island	State	Fair	Low	Free	ART97	RR

TOWN OF STURBRIDGE OPEN SPACE & RECREATION PLAN - 2011

Open Space Name	Owner/Manager	Address	Assessor Parcel #	Acreage	Use	Funds Used	Condition	Recreation Potential	Public Access	Protection	Zoning*
Leadmine Pond Public Access	STATE -PAB	485 Leadmine Road	400-04433-485	0.95 AC	GREAT POND PUBLIC ACCESS	State	Fair	Medium	Free	ART97	RR
Leadmine WMA	COMMONWEALTH OF MASS	15 Bennetts Road	145-04435-015	0.12	Open Space/Habitat Prot/Recreation	State	Good	High	Free	ART97	RR
Leadmine WMA	STATE-DFWELE	18 Goodrich Road	309-04424-018	0.11 AC	Open Space/Habitat Prot/Recreation	DFWELE	Excellent	High	Free	ART97	RR
Leadmine WMA	STATE - DFWELE	424 Leadmine Road	400-03641-424	14.50 AC	Open Space/Habitat Prot/Recreation	DFWELE	Excellent	High	Free	ART97	RR
Leadmine WMA	STATE - DFWELE	422 Leadmine Road	400-03643-422	60.00 AC	Open Space/Habitat Prot/Recreation	DFWELE	Excellent	High	Free	ART97	RR
Leadmine WMA	STATE - DFWELE	426 Leadmine Road	400-03651-426	40.00 AC	Open Space/Habitat Prot/Recreation	DFWELE	Excellent	High	Free	ART97	RR
Leadmine WMA	STATE - DFWELE	442 Leadmine Road	400-04053-442	1.08 AC	Open Space/Habitat Prot/Recreation	DFWELE	Excellent	High	Free	ART97	RR
Leadmine WMA	STATE - DFWELE	444 Leadmine Road	400-04053-444	1.13 AC	Open Space/Habitat Prot/Recreation	DFWELE	Excellent	High	Free	ART97	RR
Leadmine WMA	STATE - DFWELE	446 Leadmine Road	400-04053-446	65.16 AC	Open Space/Habitat Prot/Recreation	DFWELE	Excellent	High	Free	ART97	RR
Leadmine WMA	STATE - DFWELE	445 Leadmine Road	400-04054-445	71.49 AC	Open Space/Habitat Prot/Recreation	DFWELE	Excellent	High	Free	ART97	RR
Leadmine WMA	STATE - DFWELE	458 Leadmine Road	400-04412-458	1.56 AC	Open Space/Habitat Prot/Recreation	DFWELE	Excellent	High	Free	ART97	RR
Leadmine WMA	STATE - DFWELE	471 Leadmine Road	400-04423-471	0.50 AC	Open Space/Habitat Prot/Recreation	DFWELE	Excellent	High	Free	ART97	RR

TOWN OF STURBRIDGE OPEN SPACE & RECREATION PLAN - 2011

Open Space Name	Owner/Manager	Address	Assessor Parcel #	Acreage	Use	Funds Used	Condition	Recreation Potential	Free	Protection	Zoning*
Leadmine WMA	STATE - DFEWELE	480 Leadmine Road	400-04432-480	44.55 AC	Open Space/Habitat Prot/Recreation	DFWELE	Excellent	High	Free	ART97	RR
Leadmine WMA	STATE - DFEWELE	515 Leadmine Road	400-04454-515	40.28 AC	Open Space/Habitat Prot/Recreation	DFWELE	Excellent	High	Free	ART97	RR
Leadmine WMA	STATE-DFWELE	164 Route 84	550-04151-164	1.86 AC	Open Space/Habitat Prot/Recreation	DFWELE	Excellent	High	Free	ART97	RR
Leadmine WMA	STATE-DFWELE	510 Route 15	552-04418-510	2.59 AC	Open Space/Habitat Prot/Recreation	DFWELE	Excellent	High	Free	ART97	RR
Leadmine WMA	STATE-DFWELE	520 Route 15	552-04461-520	181.90 AC	Open Space/Habitat Prot/Recreation	DFWELE	Excellent	High	Free	ART97	RR
McKinstry Brook WMA	STATE-DFWELE	118 McGilpin Road	432-02637-118	65.00 AC	Open Space/Habitat Prot/Recreation	DFWELE	Excellent	High	Free	ART97	RR
McKinstry Brook WMA	STATE-DFWELE	40 McGilpin Road	432-03046-040	33.02 AC	Open Space/Habitat Prot/Recreation	DFWELE	Excellent	High	Free	ART97	RR
McKinstry Brook WMA	STATE- DFEWELE	36 McGilpin Road	432-03056-036	50.27 AC	Open Space/Habitat Prot/Recreation	DFWELE	Excellent	High	Free	ART97	RR
Walker Pond Public Access	DEM	140 Mass Turnpike	426-02212-140	13.88 AC	Great Pond Public Access	State	Good	High	Free	Perpetuity	RR
Wells State Park	DEPT ENVIR. MANAG.	21 Bushnell Road	183-01226-021	95.60 AC	State Park	State	Excellent	High	Fee	ART97	RR
Wells State Park	DEPT. NATURAL RESOURCES	18 Bushnell Road	183-01235-018	93.00 AC	State Park	State	Excellent	High	Fee	ART97	RR
Wells State Park	COMMONWEALTH OF MASS DEM	33 Podunk Road	520-01258-033	1.28 AC	State Park	State	Excellent	High	Fee	ART97	RR
Wells State Park	COMMONWEALTH OF MASS DEM	35 Podunk Road	520-01258-035	1.10 AC	State Park	State	Excellent	High	Fee	ART97	RR

TOWN OF STURBRIDGE OPEN SPACE & RECREATION PLAN - 2011

Open Space Name	Owner/Manager	Address	Assessor Parcel #	Acreage	Use	State	Excellent	High	Fee	ART97	Zoning*
Wells State Park	COMMONWEALTH OF MASS DEM	99 Podunk Road	520-01351-099	2.66 AC	State Park	State	Excellent	High	Fee	ART97	RR
Wells State Park	DEM	31 Podunk Road	520-01718-031	1.09 AC	State Park	State	Excellent	High	Fee	ART97	RR
Wells State Park	COMMONWEALTH OF MASS DEM	210 Walker Pond Road	660-00754-210	109.00 AC	State Park	State	Excellent	High	Fee	ART97	RR
Wells State Park	COMMONWEALTH OF MASS DEM	159 Walker Pond Road	660-01233-159	1,237.46 AC	State Park	State	Excellent	High	Fee	ART97	RR
Wells State Park	COMMONWEALTH OF MASS DEM	154 Walker Pond Road	660-01244-154	1.00 AC	State Park	State	Excellent	High	Fee	ART97	RR
Wells State Park	COMMONWEALTH OF MASS DEM	140 Walker Pond Road	660-01254-140	53.42 AC	State Park	State	Excellent	High	Fee	ART97	RR
Wells State Park	COMMONWEALTH OF MASS DEM	141 Walker Pond Road	660-01254-141	4.24 AC	State Park	State	Excellent	High	Fee	ART97	RR
Wells State Park	COMMONWEALTH OF MASS	99 Walker Pond Road	660-01735-099	1.20 AC	State Park Access Road	State	Excellent	High	Fee	ART97	RR
Wells State Park	COMMONWEALTH OF MASS DEM	3 Wells Park Road	675-01755-003	0.26 AC	State Park Access Road	State	Excellent	High	Fee	ART97	RR
Wolf Swamp WMA	STATE-DFWELE	62 Glendale Road	307-00531-062	54.40 AC	Open Space/Habitat Prot/Recreation	DFWELE	Excellent	High	Free	ART97	RR
Wolf Swamp WMA	STATE-DFWELE	51 Glendale Road	307-00418-051	73.97 AC	Open Space/Habitat Prot/Recreation	DFWELE	Excellent	High	Free	ART97	RR

*RR = Rural Residential, SR= Suburban Residential, C= Commercial, SU = Special Use District, HC = Historic Commercial

TOWN OF STURBRIDGE OPEN SPACE & RECREATION PLAN - 2011

Table 5- Other Privately Owned Lands

Open Space Name	Owner/ Manager	Address	Assessor Parcel #	Acreage	Use	Funds Used	Condition	Recreation Potential	Public Access	Protection	Zoning
1st Acre Swamp	OPACUM LAND TRUST	50 Bushnell Road	183-01227-050	26.77 AC	Open Space/Habitat Protection	PRIVATE	AVERAGE	MEDIUM	FREE	PERPETUITY	RR
Herve and Mary Jane Gaumond Memorial Sanctuary	OPACUM LAND TRUST	168 New Boston Road	455-02124-168	29.98 AC	Open Space/Habitat Protection	DONATION	GOOD	LOW	NONE	PERPETUITY	SR
Laurel Woods	ESCAPE ESTATES	14 Acorn Lane	104-02018-014	4.20 AC	Subdivision Open Space	PRIVATE	AVERAGE	LOW	FREE	PERPETUITY	SR
Opacum Woods	OPACUM LAND TRUST	37 Audubon Way	107-02154-037	10.07 AC	Open Space/Habitat Prot/Recreation	PRIVATE	EXCELLENT	HIGH	FREE	PERPETUITY	SR
Opacum Woods	OPACUM LAND TRUST	14 Audubon Way	107-02514-014	254.00 AC	Open Space/Habitat Prot/Recreation	DONATION	EXCELLENT	HIGH	FREE	PERPETUITY	SR
Opacum Woods	OPACUM LAND TRUST	1 Preserve Way	525-02533-001	0.87 AC	Open Space/Habitat Prot/Recreation	DONATION	EXCELLENT	HIGH	FREE	PERPETUITY	SR
Tantisques Crowd Sites	THE TRUSTEES OF RESERVATIONS	500 Leadmine Road	400-04441-500	52.29 AC	Open Space/ Recreation	PRIVATE	EXCELLENT	MEDIUM	FREE	ART97	RR

*RR = Rural Residential, SR= Suburban Residential, C= Commercial, SU = Special Use District, HC = Historic Commercial

TOWN OF STURBRIDGE OPEN SPACE & RECREATION PLAN - 2011

Open Space Name	Owner/ Manager	Address	Assessor Parcel #	Acreage	Use	Funds Used	Condition	Recreation Potential	Public Access	Protection	Zoning
Tantusques Crowd Sites	TRUSTEES OF RESERVATIONS	475 Leadmine Road	400-04423-475	1.01 AC	Open Space/ Recreation	PRIVATE	EXCELLENT	MEDIUM	FREE	PERPETUITY	RR
Tantusques Crowd Sites	TRUSTEES OF RESERVATIONS	479 Leadmine Road	400-04423-479	1.01 AC	Open Space/ Recreation	PRIVATE	EXCELLENT	MEDIUM	FREE	PERPETUITY	RR
Estates at Sturbridge Farms Open Space	SPAHO CORP	8 Regep Lane	536-02954-008	13.05 AC	Subdivision Open Space	PRIVATE	GOOD	MEDIUM	FREE	PERPETUITY	SR
Draper Woods Subdivision Open Space	DRAPER WOODS DEV LLC	14 Draper Woods Road	248-01916-014	6.08 AC	Subdivision Open Space	PRIVATE	AVERAGE	MEDIUM	FREE	PERPETUITY	SR
Draper Woods Subdivision Open Space	DRAPER WOODS DEV LLC	13 Draper Woods Road	248-01916-013	13.25 AC	Subdivision Open Space	PRIVATE	AVERAGE	MEDIUM	FREE	PERPETUITY	SR
The Highlands Subdivision Open Space	SANCTUARY HOMES	18 Meadow View Lane	435-02051-018	30.78 AC	Subdivision Open Space	PRIVATE	GOOD	MEDIUM	FREE	PERPETUITY	SR
The Sanctuary Subdivision Open Space	SANCTUARY HOMES	23 Evergreen Lane	254-02044-023	43.40 AC	Subdivision Open Space	PRIVATE	GOOD	MEDIUM	FREE	PERPETUITY	SR

*RR = Rural Residential, SR= Suburban Residential, C= Commercial, SU = Special Use District, HC = Historic Commercial

TOWN OF STURBRIDGE OPEN SPACE & RECREATION PLAN - 2011

Table 6 – Recreation Parcels (Please note some of these parcels may appear in other tables due to the level of protection or ownership)

Parcel Name	Owner	Address	Assessor Parcel #	Acreage	Use	Notes	Zoning*
Turner's Field	Town of Sturbridge	529 Main Street	415-02431-529	2.90 AC	Playing Fields		CT
Cedar Pond Recreation Area	Town of Sturbridge	70 Cedar Street	202-02417-070	27.07 AC	Skate Park, Recreation Area, Swimming		SR
Tantasqua Regional Schools	Tantasqua Regional School District	319 & 320 Brookfield Road	173-00423-319 & 320	92.47AC	Junior High & High School and Playing Fields		RR
Burgess Elementary School	Town of Sturbridge	45 Burgess School Road	180-02444-045	19.54	Elementary School & Playing Fields		CT/SR
Town Barn Recreational Fields	Town of Sturbridge	69 Route 84	550-02931-069	35.70 AC	Playing Fields	These are the fields behind the DPW Barn	RR
Town Common/Bandst and Area	Town of Sturbridge	278 Main Street	415-02924-278	1.79 AC	Town Common	The Town Common is a scenic green space in the National Historic Register District. Many community events and concerts take place on the common.	HC
Old Sturbridge Village	Old Sturbridge Village	Old Sturbridge Village Road	491-02455-001	361.96 AC	Living History Museum		RR
Sturbridge Host Hotel	Hospitality Associates Of Lancaster LP	366 Main Street	415-02531-366	6.84 AC	Hotel and Conference Center	Private Hotel that has beach access, and paddle boat rentals.	C
Walker Pond Access Area	Town of Sturbridge	153 Walker Pond Road	660-01244-153	2.40 AC	Public Access to Walker Pond		RR

TOWN OF STURBRIDGE OPEN SPACE & RECREATION PLAN - 2011

Parcel Name	Owner	Address	Assessor Parcel #	Acreage	Use	Notes	Zoning*
Streeter Point Recreation Area	US Army Corp of Engineers	711 Main Street	415-02342-711	140.95 AC	State Park	Public Beach and Picnic Area open on a fee basis.	RR
Outdoor World	MHC Sturbridge LLC	19 Mashapaug Road	423-04137-019	204.27 AC	Campground	No Restriction	RR
Outdoor World	MHC Sturbridge LLC	87-1 Breakneck Road	170-04825-87-1	18.31 AC	Campground	No Restriction	RR
Yogi Bear Campground	Woods & Waters Inc.	30River Road	545-03453-030	76.00 AC	Campground	No Restriction	RR
Hamilton Rod & Gun Club	Hamilton Rod & Gun Club	246 Cedar Street	202-01527-246	10.38 AC	Members Rod & Gun Club	Recreation Restriction	RR
Hamilton Rod & Gun Club	Same as owner	24 Hamilton Road	318-01632-024	138.00 AC	Members Rod & Gun Club	Recreation Restriction	RR
Hamilton Rod & Gun Club	Same as owner	233 New Boston Road	455-01613-233	6.24 AC	Members Rod & Gun Club	Recreation Restriction	RR
Hemlock Golf Course	Marc Palmer	220 Holland Road	348-03214-220	128.00 AC	Golf Facility	Recreation Restriction	RR
Streeter Point Rec Area	US Army Corp of Engineers/DCR	711 Main Street	415-02342-711	140.95 AC	State Park	Federal	RR
Westville Lake Rec Area	US Army Corp of Engineers	55 Farquhar Road	270-03434-055	118.59 AC	Recreation/Flood Control	Federal	RR
Westville Lake Rec Area	US Army Corp of Engineers	255 Main Street	415-02925-255	123.06 AC	Recreation/Flood Control	Federal	RR
Westville Lake Rec Area	US Army Corp of Engineers	59 Mashapaug Road	423-04212-059	16.19 AC	Recreation/Flood Control	Federal	RR
Westville Lake Rec Area	US Army Corp of Engineers	62 Mashapaug Road	423-04212-062	4.08 AC	Recreation/Flood Control	Federal	RR

TOWN OF STURBRIDGE OPEN SPACE & RECREATION PLAN - 2011

Parcel Name	Owner	Address	Assessor Parcel #	Acreage	Use	Notes	Zoning*
Westville Lake Rec Area	US Army Corp of Engineers	45 Old Mashapaug Road	485-04236-045	29.65 AC	Recreation/Flood Control	Federal	RR
Westville Lake Rec Area	US Army Corp of Engineers	100 Route 15	552-03422-100	122.00	Recreation/Flood Control	Federal	RR
Westville Lake Rec Area	US Army Corp of Engineers	81 Wallace Road	665-03952-081	69.44 AC	Recreation/Flood Control	Federal	RR
Long Pond Access	Town of Sturbridge	55 Champeaux Road	206-01912-055	59.47 AC	Long Pond Access	Fishing Area and Pond Access	RR
Westville Lake Rec Area	US Army Corp of Engineers	236 Charlton Road	208-02527-236	1.92 AC	Recreation/Flood Control	Federal	SR
Westville Lake Rec Area	US Army Corp of Engineers	229 Charlton Road	208-02527-229	1.51 AC	Recreation/Flood Control	Federal	SR
Westville Lake Rec Area	US Army Corp of Engineers	147 Route 84	550-03412-147	71.08	Recreation/Flood Control	Federal	RR

*RR = Rural Residential, SR= Suburban Residential, C= Commercial, SU = Special Use District, HC = Historic Commercial

TOWN OF STURBRIDGE OPEN SPACE & RECREATION PLAN - 2011

Table 7 – Parcels of Interest

Parcel Name	Owner	Assessor Parcel #	Acreage	Potential Use	Notes	Zoning*
7 Allen Road	Joanna Plimpton, Trustee	110-00655-007	270.40 AC	Open Space/Habitat Protection/Recreation		RR
234 Walker Road	Tmimim, Yeshiva Achei	662-00724-234	54.00 AC	Open Space/Habitat Protection/Recreation		RR
50 Douty Road	Debra E. Gardiner	245-02717-050	138.73 AC	Open Space/Habitat Protection/Recreation	Barrett Farm is one of the designated Priority Heritage Landscapes in the Sturbridge Reconnaissance Report prepared through the Massachusetts Heritage Landscape Inventory Program (June 2007)	RR
14 Douty Road	Debra E. Gardiner	245-02717-014	102.80 AC	Open Space/Habitat Protection/Recreation	Barrett Farm is one of the designated Priority Heritage Landscapes in the Sturbridge Reconnaissance Report prepared through the Massachusetts Heritage Landscape Inventory Program (June 2007)	RR
23 Hall Road	Robert B. Strauss	315-02917-023	23.43 AC	Historic Preservation of the Home and Open Space /Habitat Protection of the open field area that serves as a buffer for the Hobbs Brook Wetlands. This parcel also provides a scenic vista on Hall Road.	The Hobbs Property is one of the designated Priority Heritage Landscapes in the Sturbridge Reconnaissance Report prepared through the Massachusetts Heritage Landscape Inventory Program (June 2007). The property includes a wood frame house built by Samuel Hobbs in about 1780. There is a long stretch of open field that parallels the road.	SR

TOWN OF STURBRIDGE OPEN SPACE & RECREATION PLAN - 2011

Parcel Name	Owner	Assessor Parcel #	Acreage	Potential Use	Notes	Zoning*
466 Leadmine Road	Town of Sturbridge	400-04412-466	1.02 AC	Open Space/Habitat Protection/Recreation	Property taken by tax taking; adjacent to the Leadmine WMA. No protection at this time.	RR
50 Holland Road	Town of Sturbridge	348-02716-050	0.59 AC	Open Space/Habitat Protection/Recreation	Property taken by tax taking; adjacent to the Riverlands. No protection at this time.	RR
Many	Many			Parcels that will provide better access to the Sturbridge Lakes and Ponds.		
Mashapaug Road	Town of Southbridge	423-04500-01A	45.00 Acres	Watershed Protection		RR
Mashapaug Road	Town of Southbridge	423-04500-01B	6.00 AC	Watershed Protection		RR
Mashapaug Road	Town of Southbridge	423-04500-01D	40.00 Acres	Watershed Protection		RR
Mashapaug Road	Town of Southbridge	423-04500-01D	40.00 Acres	Watershed Protection		RR
40A South Road	Town of Southbridge	595-04614-40A	9.00 Acres	Watershed Protection		RR
21 Taylor Road	Town of Southbridge	635-04922-021	29.90 Acres	Watershed Protection		RR
22 Taylor Road	Town of Southbridge	635-04922-022	29.02 Acres	Watershed Protection		RR
Outdoor World	MHC Sturbridge LLC	423-04137-019	204.27 Acres	Continued Campground Use	Campground	RR

TOWN OF STURBRIDGE OPEN SPACE & RECREATION PLAN - 2011

Parcel Name	Owner	Assessor Parcel #	Acreage	Potential Use	Notes	Zoning*
Outdoor World	MHC Sturbridge LLC	170-04825-87-1	18.31 Acres	Continued Campground Use	Campground	RR
Yogi Bear Campground	Woods & Waters Inc.	545-03453-030	76.00 Acres	Continued Campground Use	Campground	RR
Sarty Farm	Lynne Sarty	270-03435-047	74.84 Acres	Open Space/Agricultural	Farm	SR
Woodstock Properties	Woodstock Properties	340-03824-63	64.16 Acres	River Access	Vacant Land with River Access	SR

*RR = Rural Residential, SR= Suburban Residential, C= Commercial, SU = Special Use District, HC = Historic Commercial

Accessibility of Town Owned Properties

The Town is taking steps to make sure that individuals of all abilities are able to access and enjoy the open space and recreation areas in the community. The Town completed the “Town of Sturbridge Accessibility Plan” in August 2008. This plan evaluated all town buildings and facilities including our recreational areas. The plan identified deficiencies and set forth an action plan to correct the deficiencies. Progress is being made, but since so many areas needed to be addressed, it will be some time before the recreational areas are compliant. The Appendix at the end of this plan contains the required facility inventory sheets for the recreation areas.

Open Space parcels were not included in the 2008 plan. However, these parcels are being evaluated and upgraded to insure accessibility on parcels that the public is being encouraged to use. These measures are not being undertaken on parcels acquired for water protection purposes or on forest cutting parcels, or on small landlocked parcels that were acquired mainly for habitat protection and that are impossible to access without crossing other privately owned properties. The required inventory sheets can be viewed in the Appendix, and the narrative that follows describes steps taken to insure access on the major open space areas where public use is being encouraged. In other cases the narrative explains that there is no access and explains the reasons for that limited access. The Town will continue to make progress in providing access during this next plan period and planned improvements have been noted below and are contained in the Goals section of this plan.

Heins Farm

Parking:

The Heins Farm property contains a parking lot constructed of a firm process gravel surface. There are two designated handicapped parking spaces; one is van accessible. The total parking capacity on site is 12 cars.

Trails:

There are three trails containing 2.1 miles: On National Trails Day 2008 3-trails were officially opened; (1) an ABA rule compliant trail, (2) a universally accessible trail, (3) and a loop trail. Trail Access information (TAI) has been posted on site.

Two Handicapped Accessible benches (100%) – One (1) located on the ABA rule compliant trail, one (1) on universally accessible trail.

Site access is firm process gravel packed surface (ABA Compliant) minimum 3’ wide and the path of travel is firm process gravel/natural materials.

TOWN OF STURBRIDGE OPEN SPACE & RECREATION PLAN - 2011

197 Leadmine Road

Parking:

The 197 Leadmine Road property contains a parking lot constructed of a firm process gravel surface. There are two designated handicapped parking spaces; one is van accessible. The total parking capacity on site is 12 cars.

Trails:

The trail system at 197 Leadmine directly connects to the trails at Heins Farm.

Three trails - 2.1 miles: On National Trails Day 2008 3-trails were officially opened, (1) an ABA rule compliant trail, (2) a universally accessible trails, and (3) a loop trail. Trail Access information (TAI) posted.

The site access is firm process gravel packed surface (ABA compliant) minimum 3' wide

Leadmine Mountain Conservation Land:

Parking:

There are two designated parking locations:

- 1.) Shattuck Road – This parking area is a dirt driveway access with a gate. It may be adequate for parking for 1-2 cars. There are no designated “parking spaces”. This area is at the top of a hill and is not a good location to situate handicapped accessible parking.
- 2.) Old Sturbridge Village Road (Private Way) – This parking area/access lends itself well to being transitioned into a handicapped accessible parking area. In 2008 as part of a National Trails Fund grant that was received by the Town in cooperation with the Grand Trunk Trail Blazers, \$5,000 in grant funds were awarded for the construction of a handicapped accessible trail. In addition the town has completed construction of two handicapped accessible footbridges on the property, and the town has been working to be granted an easement for a handicap accessible trail and parking area easement. The segment of trail and the parking area are needed to make this site handicapped accessible since it is the only location with the appropriate grades. Also this would allow the town to locate a portion of the handicapped accessible trail on Old Sturbridge

TOWN OF STURBRIDGE OPEN SPACE & RECREATION PLAN - 2011

Village land, eliminating the need to engineer a trail through an existing gravel pit that floods seasonally. Please see the breakdown below from the grant application that details the completed and planned work to complete this project. Portions of this project are dependent on the acquisition of the trail and parking area easement on Old Sturbridge Village.

Breakdown of Work to be completed as part of the "National Trails Fund" Grant Phase I

1. Identification of an accessible trail loop/location, which meets Federal proposed guidelines for accessibility: Thomas Chamberland, Army Corp of Engineers Park Ranger (USACE), is certified in Universal Trail Access Process (UTAP) by American Trails. *ITEM COMPLETED (see trails A and B on attached map)
- 3.2. Vegetation and hazard tree removal and pruning: Local tree companies will be solicited to volunteer in the needed work, or contracted if needed. *SOME COMPLETED, SOME STILL TO BE COMPLETED IN 2011
- 4.3. Trail resurfacing and grading: Multiple volunteer laborers and organizations have previously volunteered to remove roots and rocks from trails. These groups include Bay State Jeepers a local Jeep enthusiast group, Boy Scout and Girl Scout troops donated their time this spring to remove rocks and tree roots from trails. We plan to solicit the same volunteer force for this project. *PLANNED FOR SUMMER 2011
- 5.4. Spreading of a firm gravel surface on the trail: Grant funds would be used to purchase and truck material and to hire equipment to spread a large amount of gravel/stone dust for trail surfaces we hope to solicit donations, however we know to not rely completely on donations to complete the trail. *GRAVEL PURCHASED AND CURRENTLY ON SITE COMPLETION OF WORK PLANNED FOR SUMMER 2011
- 6.5. Installation of trail blazes/trail markers for navigation: Volunteers will put markings/blazes on trees to indicate the trail locations. * PLANNED FOR 2011
- 7.6. Installation of signage to direct hikers to and from parking areas, trailheads, possibly some interpretive signage identifying scenic locations on the site, areas of ecological significance, and historic significance: Volunteers would be installing signage, with some assistance from the town Department of Public Works. Grant funds would be used to purchase basic directional signage. *PLANNED FOR 2011

TOWN OF STURBRIDGE OPEN SPACE & RECREATION PLAN - 2011

8.7. Install an informational Kiosk at trailhead. The town already has purchased a 3' x 4' kiosk to be used on this property to display trail maps, post rules, and provide general interpretation and history of the area. Volunteers will install this kiosk. *COMPLETED – ADDITIONAL CONSIDERATION MUST BE PUT TOWARD SIGNAGE FOR THE VISUALLY IMPAIRED.

Phase II

8. Design and replacement of existing destabilized footbridge: In the coming year High School students in a bridge design class at the local Tantasqua Regional (Technical) High School will design a footbridge, which will replace the existing failing footbridge. Carpentry students (at the same school) will then construct and install one or more of the bridges by next years National Trails Day opening. The town has already appropriated \$20,000 to fund construction of footbridges on this property. (*COMPLETED)

Additional work to be completed pending future appropriations (not part of Grant Application)

Phases III and IV

Phase III

9. Additional improvements to existing trail surfaces, and expansion of parking area.
Phase IV

10. Connection of loop trail.

RAMPS:

The bridges that were constructed on this property were designed to be handicapped accessible with adequate approaches and with railings. The surfacing of the bridge approaches will be installed as gravel when the gravel for the handicapped trail system is installed in Summer of 2011.

SITE ACCESS:

At the current time there is no accessible entrance to the trail system. When the easement is secured from Old Sturbridge Village it will give the Town the ability to construct such an accessible entrance from the parking area to the trail system.

Once the site access easement is secured there will be a hard pack surface, disembarking area, and a year round accessible trail that is not flooded seasonally (as the current assess is).

TOWN OF STURBRIDGE OPEN SPACE & RECREATION PLAN - 2011

PATH OF TRAVEL:

Currently there are two gates in the Old Sturbridge Village Road parking area, one which serves to restrict unauthorized vehicles from entering Town property, and another gate that serves as an entrance to Old Sturbridge Village (private property).

The current town entrance does not provide handicapped access through the "sand pit". The easement would re-route users to a handicapped accessible trail that will be constructed on OSV property.

Stallion Hill Road Conservation Land

PARKING:

A small unpaved parking area exists on the site. The area could not accommodate more than one vehicle. This access has not been maintained due to severe erosion at the main trail access. The erosion issue must be addressed before encouraging this area as an access point.

TRAILS:

There are existing unmaintained trails on this property. Due to lack of access, issues with trail erosion, and lack of resources there are no current trail development plans on this property.

RAMPS:

There are no ramps or handrails on the site.

SITE ACCESS:

ADA site access is not available at this site due to the limited road frontage.

PATH OF TRAVEL:

The current path from the existing parking area is washed out due to severe erosion, which is preventing/adversely impacting all public access to the site from the parking area. We are currently not encouraging the public to access/use this site. Due to the location and access it is not clear whether legally ADA access could be constructed.

TOWN OF STURBRIDGE OPEN SPACE & RECREATION PLAN - 2011

Shepherd Parcel - #80 Route 15

It should be noted that this parcel is part of an extensive engineering and design study being undertaken by the Recreation Committee for the installation of ball fields, walking trails, river access, and a fitness trail. When this project is funded all improvements will be designed to be accessible. However the current site conditions are noted below.

PARKING:

There is currently no parking area on the property.

TRAILS:

There are currently no trails on the property.

RAMPS:

There are no ramps on the property.

SITE ACCESS:

There is no current means of access to the property.

PATH OF TRAVEL:

There is no path of travel to this parcel. It is an undeveloped wood lot.

Brook Hill Open Space Parcel

PARKING:

There is no current parking access for this site. The property is landlocked.

TRAILS:

There are no current trails on this property.

RAMPS:

There are no ramps on this property.

TOWN OF STURBRIDGE OPEN SPACE & RECREATION PLAN - 2011

SITE ACCESS:

There is no site access to this property.

PATH OF TRAVEL:

There is no path of travel to this property.

67 Clark Road

PARKING:

There is no current parking access for this site. The property is landlocked.

TRAILS:

There are no current trails on this property.

RAMPS:

There are no ramps on this property.

SITE ACCESS:

There is no site access to this property.

PATH OF TRAVEL:

There is no path of travel to this property.

47 Finlay Road

PARKING:

There is no current parking access for this site. The property is landlocked.

TRAILS:

There are no current trails on this property.

TOWN OF STURBRIDGE OPEN SPACE & RECREATION PLAN - 2011

RAMPS:

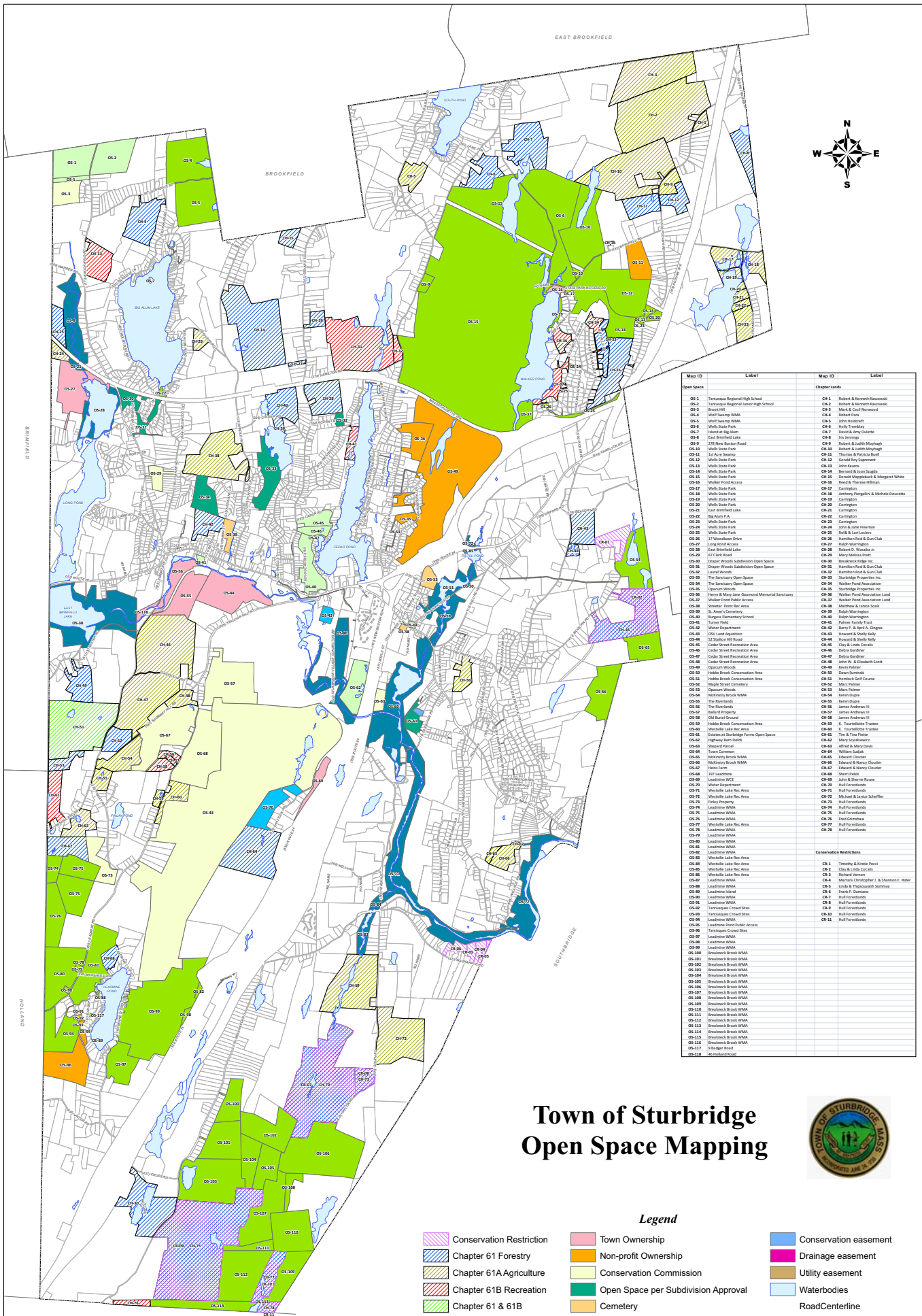
There are no ramps on this property.

SITE ACCESS:

There is no site access to this property.

PATH OF TRAVEL:

There is no path of travel to this property.



Date Produced: February 24, 2011

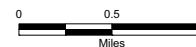
Information Disclaimer:
Information depicted on this map is for planning purposes only.
The information is not adequate for legal boundary definition,
regulatory interpretation, or parcel level analysis
Data Sources: Town of Sturbridge, MassGIS

Town of Sturbridge Open Space Mapping



Legend

- | | | |
|--------------------------|-------------------------------------|-----------------------|
| Conservation Restriction | Town Ownership | Conservation easement |
| Chapter 61 Forestry | Non-profit Ownership | Drainage easement |
| Chapter 61A Agriculture | Conservation Commission | Utility easement |
| Chapter 61B Recreation | Open Space per Subdivision Approval | Waterbodies |
| Chapter 61 & 61B | Cemetery | Road/Centerline |
| Federal Ownership | Municipal Playing Fields | Parcels |
| State Ownership | Water Department Land | |



Tighe & Bond