

# FORM A - AREA

Assessor's Sheets   USGS Quad   Area Letter   Form Numbers in Area

MASSACHUSETTS HISTORICAL COMMISSION  
MASSACHUSETTS ARCHIVES BUILDING  
220 MORRISSEY BOULEVARD  
BOSTON, MASSACHUSETTS 02125

415-02913-307  
330-02913-005

South  
bridge

STU.  
I

STU.40-  
44;STU.200

## Photograph



**Town/City:** Sturbridge

**Place** (*neighborhood or village*): Sturbridge Center

307 and 315 Main Street and 5 Haynes Street

**Name of Area:** Haynes Corner

**Present Use:** Residential

**Construction Dates or Period:** ca. 1780-1912

**Overall Condition:** fair-good

**Major Intrusions and Alterations:**

**Acreage:** 3.37 acres

**Recorded by:** Bonnie Parsons, PVPC

**Organization:** Sturbridge Historical Commission

**Date** (*month/year*): October/2017

## Locus Map

See Attached map

☒ see continuation sheet

# INVENTORY FORM A CONTINUATION SHEET

STURBRIDGE

HAYNES CORNER

MASSACHUSETTS HISTORICAL COMMISSION

Area Letter Form Nos.

220 MORRISSEY BOULEVARD, BOSTON, MASSACHUSETTS 02125

STU.I

STU.40-  
44;STU.200

- ☒ Recommended for listing in the National Register of Historic Places.  
*If checked, you must attach a completed National Register Criteria Statement form.*

Use as much space as necessary to complete the following entries, allowing text to flow onto additional continuation sheets.

## ARCHITECTURAL DESCRIPTION

*Describe architectural, structural and landscape features and evaluate in terms of other areas within the community.*

The Haynes Shop Area consists of three contiguous lots occupying the southwest corner of Main and Haynes Streets. The area is on a hilltop that drops off to the east, west and south. The area is comprised of five buildings that are described in chronological order:

The **Deacon Zenas Dunton House, 5 Haynes Street, ca. 1780** is a well-preserved, Federal style house of two-and-a-half stories under a side-gable roof. The clapboard-sided house has a center chimney on its slate-covered roof and rests on low stone foundations. Roof eaves are clipped in the gable ends. The center chimney, low foundations and clipped gable eaves are all features carried over from the Georgian period and retained during the Federal style period in many rural communities. The facade is five bays wide with a typically tall and narrow, center entry whose surround is composed of paneled pilasters supporting a high and full entablature. The architrave of the entablature contains a 5-light transom and above it the frieze is comparably wide. The two sections of the entablature are separated by a thin fillet and topped by a narrow cornice. This is a surround characteristic of the Federal style period. Windows of the façade and three elevations have 12/12 sash, which may be a more recent replacement for 6/6 sash. Attached to the house on its north elevation is a one-story ell that is two bays long under a side-gable roof. To it is attached on the north, a one-and-a-half story, front-gabled carriage barn. The ell is flush and vertically-sided, and the barn is asbestos shingle-sided. The barn has a vehicle entry whose door is on an interior track and it has a window beside the vehicle entry and in the gable, both of which have 6/6 sash. The carriage barn would date ca. 1880.

The **Deacon Daniel Plimpton House, 307 Main Street, ca. 1800** is east-facing on to Haynes Street and was formerly numbered 1 Haynes Street. Occupying the corner lot, it has a low stone embankment on the west and north to mark off its lot and position. The building is two-and-a-half stories and has a side-gable roof that is slate-covered. There is one chimney on the roof at its northern end. The main block of the house is five bays wide and two bays deep and has a large, two-and-a-half story ell on its west elevation. The ell is five bays long and four bays wide and has a single chimney rising from its roof ridge. In the northwest angle between the main block and the ell is a recently added (ca. 2000) two-story exterior staircase over a one-story corner porch. The center entry of the east façade has a simple, flat surround and is sheltered by a Queen Anne style portico on turned posts. Its gable field is filled with wood shingles in a mouse-tooth and scallop pattern. Windows throughout the building have 1/1 replacement sash.

The **Haynes Family House, 307 Main Street, 1830-1850** is east-facing to Haynes Street. It was reported by members of the Haynes family to consist of an earlier house, dating ca. 1830 to which an addition was made on the east ca. 1850. A structural inspection could confirm two periods of construction. The building also was damaged by a fire whose extent was not recorded. Today it is a two-and-a-half story house under a side-gable roof of asphalt shingles. There is one small chimney off-center behind the roof ridge. The façade is six bays long, with an off-center entry and irregularly-placed windows. A full-width, one-story porch crosses the façade. Its two southernmost bays have been enclosed and above the entry is a small pediment. The porch has square piers supporting its roof. Hinting at a complex structural history, on the north elevation, there is an overhang between first and second floors. It is not present on the south elevation. Cornerboards at the second story are wide in the fashion of the Greek Revival, though on the first floor they are narrow. The center entry to the house has an architrave surround with small cornerblocks. This surround was widely used in the 19<sup>th</sup> century so cannot help with dating. The house is sided in asbestos shingles and rests on stone foundation on the east and brick on the west. There is a deck on the west elevation.

# INVENTORY FORM A CONTINUATION SHEET

STURBRIDGE

HAYNES CORNER

MASSACHUSETTS HISTORICAL COMMISSION

Area Letter Form Nos.

220 MORRISSEY BOULEVARD, BOSTON, MASSACHUSETTS 02125

STU.I

STU.40-44;STU.200

Southwest of the Haynes Family House, **307 Main Street, ca. 1935 is a side-hill barn** under a gambrel roof. Novelty-sided, the wood frame barn is one story on the east and two stories on the west as it sits into the hillside.

**Haynes Harness and Blacksmith Shop, 315 Main Street, ca. 1850** was converted to a residence ca. 1930. It is a one-and-a-half story house with a front-gable roof on which are two large shed-roofed dormers. The north facing house is three bays wide and has a side-hall entry. It has a one-story, shed-roofed ell on the south resting on concrete foundations. The vinyl-sided building has vinyl replacement windows and a bank of new windows on the east elevation where there is also a secondary entry.

**Haynes Carriage and Paint Shop, 307 Main Street, ca. 1890** has two, equally-focused elevations with entries on north and east so that identifying a façade is more a matter of opinion than of function. It is a side-hill building whose basement level is exposed on the east, south and west. High fieldstone foundations and clapboards above low fieldstone foundations make up the basement level elevations on east, south and west. A Cape in form, the house on the east and west elevations under the side gable roof, has irregular fenestration with six bays on the first floor and three, knee-high windows with 3/3 sash on the second floor. The entrance on the east elevation has a simple flat surround as do windows on all elevations. Sash is vinyl 6/6 at the first story and 3/3 at the second story, which gives it a Greek Revival stylistic designation. Shed roofed porches have been added to the east and north entries.

## HISTORICAL NARRATIVE

*Explain historical development of the area. Discuss how this relates to the historical development of the community.*

Deacon Daniel Plimpton ca. 1800 built the house at **307 Main Street** (also known as 1 Haynes Street) where he kept a store and where his sister carried on a private school for girls. South of the store on Haynes Street was a second house: **The Deacon Zenas Dunton House of ca. 1780 at 5 Haynes Street**. It is thought by subsequent occupants, that these two houses were joined ca. 1830 by a small Greek Revival house at **3 Haynes Street**, whose owner has not so far been identified. In 1834 when Henry Haynes, a Monson native, began a harness-making business at the Sturbridge common these three buildings were part of his greater neighborhood. Several years into his business, Haynes in 1836 married Julia Dunton of Sturbridge, and the couple had a son Calvin. Julia died four years later and in 1842 he married Lucinda Dunton, also of Sturbridge. Henry and Lucinda raised their two sons, Henry D., and John as well as Calvin. Meanwhile, in 1844 Henry's younger brother Melvin came from Monson and joined him in harness-making. The firm became known as H. & M. Haynes. About 1853 they were joined in the work by Henry's son Calvin, who was by then 17, working with his father and uncle as a harness maker, but not as a partial business owner. This iteration of the business lasted until 1861 when Melvin sold his share in the business to Henry's two sons Henry D(unton) Haynes and John Haynes. Calvin appears to have left Sturbridge for Milford, Massachusetts where he worked as a carriage-maker. Henry and his two remaining sons worked then as H. Haynes and Sons. John sold out in 1865, so the business name was changed to reflect the leaving: H. Haynes & Son. Henry Sr. and Henry, Jr. then worked together until Henry Sr.'s death in 1900. An 1870s advertisement for H. Haynes and Son described them as manufacturers and dealers in carriages, wagons, sleighs and harness. But adapting to the times, they were also agents for wind- and hand-powered equipment such as pumps and lifts that were needed for larger-scale farming. Henry Jr. continued the business well after his father's death.

This part of Sturbridge Center between 1836 and 1850 became the center for the Haynes family's residence and business. Henry, Sr. and Lucinda lived at **5 Haynes Street, the Deacon Dunton House of ca. 1780** that was Lucinda's family home, while Henry, Jr. and his wife lived at **3 Haynes Street** (one of the buildings included with the area at 307 Main Street). The latter was the extant Greek Revival style house that dated ca. 1830, to which they made an addition, prior to 1892. The Haynes' business offices and shop were located at the **Deacon Daniel Plimpton House, known also as 1 Haynes Street, ca. 1800**. As the business developed, the Haynes added several buildings to carry out their manufacture. They built a **harness and blacksmith shop, at 315 Main Street ca. 1850**, and a **carriage and paint shop** just east of it at **307 Main Street, ca. 1890**. The large ell to the Plimpton House was added by that date.

# INVENTORY FORM A CONTINUATION SHEET

STURBRIDGE

HAYNES CORNER

MASSACHUSETTS HISTORICAL COMMISSION

Area Letter Form Nos.

220 MORRISSEY BOULEVARD, BOSTON, MASSACHUSETTS 02125

STU.I

STU.40-  
44;STU.200

Henry D. Haynes (1837-1922) and his wife Susan had five children: Emily, Julia, Susan, Howard and Frank and they lived at the Haynes Family House at 3 Haynes Street, which was converted to a two-family, sharing it with Henry's parents, Henry and Lucinda Haynes. Of Henry D. and Susan's five children, Howard moved to Connecticut; Frank attended college for four years and then moved to Ware where he took up farming. Emily and Susan Haynes also went to college and became librarians. Emily spent most of her career as a college librarian at Worcester Polytechnic Institute, and Susan was for fifty years librarian at Sturbridge's Joshua Hyde library, where she grew a small collection into a modern library and community resource. Henry D. Haynes ca. 1906 moved the harness and blacksmith shop from Haynes Street to its present location at 315 Main Street.

Frank returned to Sturbridge in 1912 with his wife Harriet. They remodeled the harness and blacksmith shop at **315 Main Street in 1912**, converting it to a house for themselves. Frank joined his father in the Haynes business, H. D. Haynes & Son, wheelwrights and nurserymen. Frank and Henry D. added farming to their business both at 3 Haynes Street where they raised cows, and on land they owned elsewhere in Sturbridge for orchards, reflecting the shift in Sturbridge to fruit farming. Frank and Harriet bought over ten acres on Haynes Street in the 1930s and put in an apple orchard at what is now 12 Haynes Street, and formerly called the Orchard Motel. A fire in 1935 at 3 Haynes Street the Haynes family house, burned down their cow barn and a portion of the house, which was then re-constructed. A new barn was erected in place of the old.

Emily Haynes returned to Sturbridge ca. 1955 and joined her sister Susan at the Hyde Library. Frank Tuttle Haynes (1887-1987) and his wife Harriet continued to live at 315 Main Street and while Frank was developing his orchard, Harriet was at the University of Massachusetts' extension service as a home economics specialist. For a few years in the 1930s she also ran a restaurant on Main Street. In 1949 Frank, Harriet, Julia and Susan were all living in the same household at 3 Haynes Street and Frank and Harriet were on the Board of Trustees for the Joshua Hyde Library. Frank was president of the Board. In 1960 Frank and Harriet sold the orchard on the east side of Haynes Street to a motel company and converted 1 and 3 Haynes Street to apartments in the 1960s. Frank after Harriet's death in 1985 then sold the apartments and single houses at 5 Haynes, 315 and 307 Haynes Street.

## BIBLIOGRAPHY and/or REFERENCES

### Maps

Bailey, O. H. & Co. Bird's eye view *Sturbridge and Fiskdale*, Massachusetts, 1892.

Beers, F. W. *Plan of Towns of Sturbridge and Southbridge*, 1870.

Walling, H. F. *Map of Worcester County*, Wm. E. Baker, Boston, 1857.

### Primary Sources

Chase, Nelly M. *Photograph Album*, Joshua Hyde Public Library, Sturbridge.

### Secondary Sources

Burns, Brian. *Sturbridge: A Pictorial History*, Norfolk, 1988.

Clark, Joseph. *Historical Sketch of Sturbridge, Massachusetts*, Brookfield, Massachusetts, 1838.

Corey, Charles F. "Old Houses in Sturbridge" Quinebaug Historical Society Leaflets, vol.1, no. 5, 1900.

Davis, George. *A Historical Sketch of Sturbridge and Southbridge*, West Brookfield, 1856.

Hurd, D. Hamilton. *History of Worcester County, Massachusetts*, vol. 1, Philadelphia 1889.

Izard, Holly. *Old Houses of Sturbridge*, scrapbook, n.d., Joshua Hyde Public Library, Sturbridge.

### Digital Resources

[www.Ancestry.com](http://www.Ancestry.com) for federal censuses 1790-1940 and Massachusetts State Censuses 1855, 1865.

# INVENTORY FORM A CONTINUATION SHEET

STURBRIDGE

HAYNES CORNER

MASSACHUSETTS HISTORICAL COMMISSION

220 MORRISSEY BOULEVARD, BOSTON, MASSACHUSETTS 02125

Area Letter Form Nos.

STU.I

STU.40-44;STU.200

<https://dp.la/> Digital Public Library of America  
[www.masslandrecords.com](http://www.masslandrecords.com) for deeds

415-02913-307	STU.41	307 Main (3 Haynes)	Haynes Family House	1830-1850	Greek Revival	B
415-02913-307	STU.200	307 Main (3 Haynes)	barn	1935	gambrel	
415-02913-307	STU.40	307 Main (1 Haynes)	Daniel Plimpton House	ca. 1800	utilitarian	B
415-02913-307	STU.43	307 Main Street	Haynes Carriage & Paint	ca. 1890		B
415-02913-315	STU.44	315 Main Street	Haynes Harness & Blsmth	ca. 1850		
330-02913-005	STU.42	5 Haynes Street	Deacon Dunton House	ca. 1780	Federal	B



Haynes Family House



Haynes Carriage & Paint Shop



Daniel Plimpton House



# INVENTORY FORM A CONTINUATION SHEET

STURBRIDGE

HAYNES CORNER

MASSACHUSETTS HISTORICAL COMMISSION

Area Letter Form Nos.

220 MORRISSEY BOULEVARD, BOSTON, MASSACHUSETTS 02125

STU.I

STU.40-  
44;STU.200



Deacon Dunton House



Harness and Blacksmith shop

# INVENTORY FORM A CONTINUATION SHEET

STURBRIDGE

HAYNES CORNER

MASSACHUSETTS HISTORICAL COMMISSION

Area Letter Form Nos.

220 MORRISSEY BOULEVARD, BOSTON, MASSACHUSETTS 02125

STU.I

STU.40-  
44;STU.200



Joshua Hyde Library Collection

# INVENTORY FORM A CONTINUATION SHEET

STURBRIDGE

HAYNES CORNER

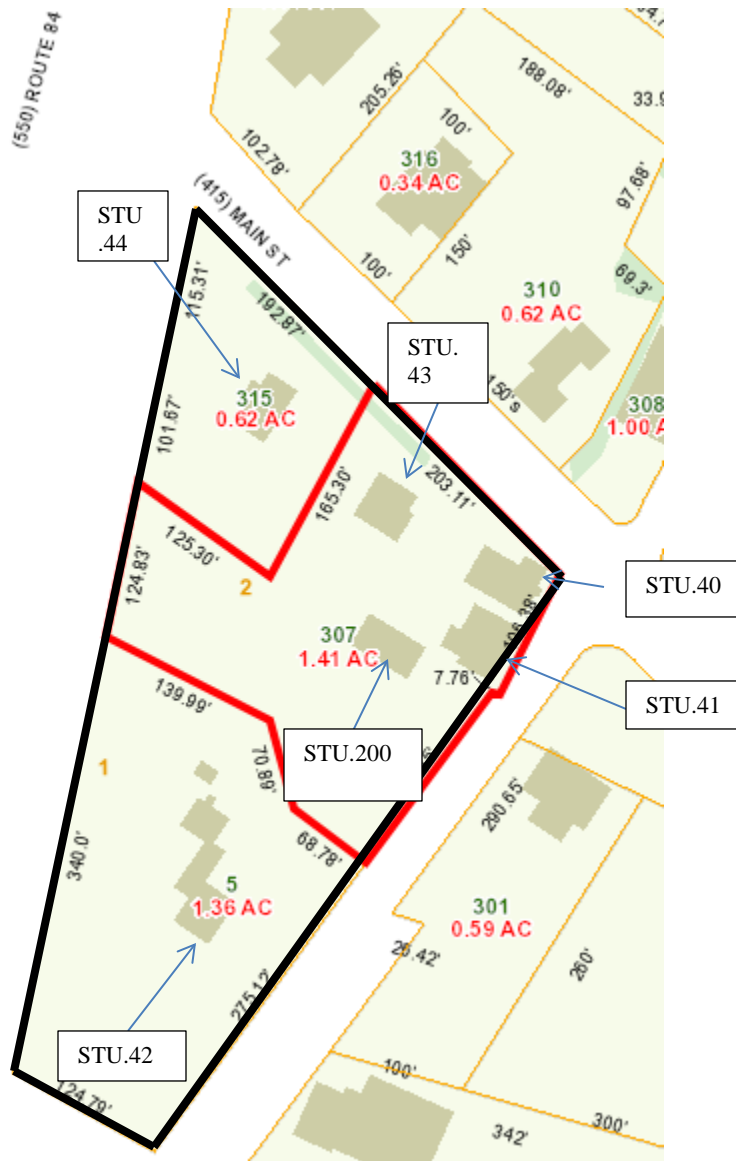
MASSACHUSETTS HISTORICAL COMMISSION

Area Letter Form Nos.

220 MORRISSEY BOULEVARD, BOSTON, MASSACHUSETTS 02125

STU.I

STU.40-  
44;STU.200





# INVENTORY FORM A CONTINUATION SHEET

STURBRIDGE

HAYNES CORNER

MASSACHUSETTS HISTORICAL COMMISSION

Area Letter Form Nos.

220 MORRISSEY BOULEVARD, BOSTON, MASSACHUSETTS 02125

STU.I

STU.40-  
44;STU.200

## National Register of Historic Places Criteria Statement Form

Check all that apply:

- ☐ Individually eligible ☐ Eligible **only** in a historic district
- ☐ Contributing to a potential historic district ☒ Potential historic district

Criteria: ☒ A ☐ B ☒ C ☐ D

Criteria Considerations: ☐ A ☐ B ☐ C ☐ D ☐ E ☐ F ☐ G

Statement of Significance by Bonnie Parsons

*The criteria that are checked in the above sections must be justified here.*

Haynes Corner is eligible for the National Register meeting criteria A and C.

As a collection of residential and industrial buildings long in the ownership of a single family, it represents Sturbridge's late 18<sup>th</sup>-20<sup>th</sup> century industrial character in which people lived and worked in close proximity to their business. The Haynes' long occupancy of the area over three generations followed the changes in the town as they took part in and supported agriculture through their wagon works and followed the town's lead into orchard development and commerce. The family members through the generations took part in town affairs helping to develop the town library to its 20<sup>th</sup> century identity as a cultural center for the community among other contributions to town government.

The buildings represent the residential scale used for light industry buildings in the 19<sup>th</sup> century and both the Deacon Duntin House and the Daniel Plimpton House represent the Federal style as it appeared in Sturbridge.

The district has local significance. It has integrity of location, design, setting, materials, workmanship, feeling and association.