

FORM A - AREA

Assessor's Sheets USGS Quad Area Letter Form Numbers in Area

MASSACHUSETTS HISTORICAL COMMISSION
MASSACHUSETTS ARCHIVES BUILDING
220 MORRISSEY BOULEVARD
BOSTON, MASSACHUSETTS 02125
Photograph



415-02344-682	Wales, MA-CT		STU. H	STY.195- 199;STU. 911
---------------	-----------------	--	-----------	-----------------------------

Town/City: Sturbridge

Place (*neighborhood or village*): Fiskdale

Name of Area: Bay Path Motel

Present Use: Motel

Construction Dates or Period: house, ca. 1948; motel building, ca. 1948 and 1967-72.

Overall Condition: Good

Major Intrusions and Alterations:

Vinyl siding applied, ca. 2000

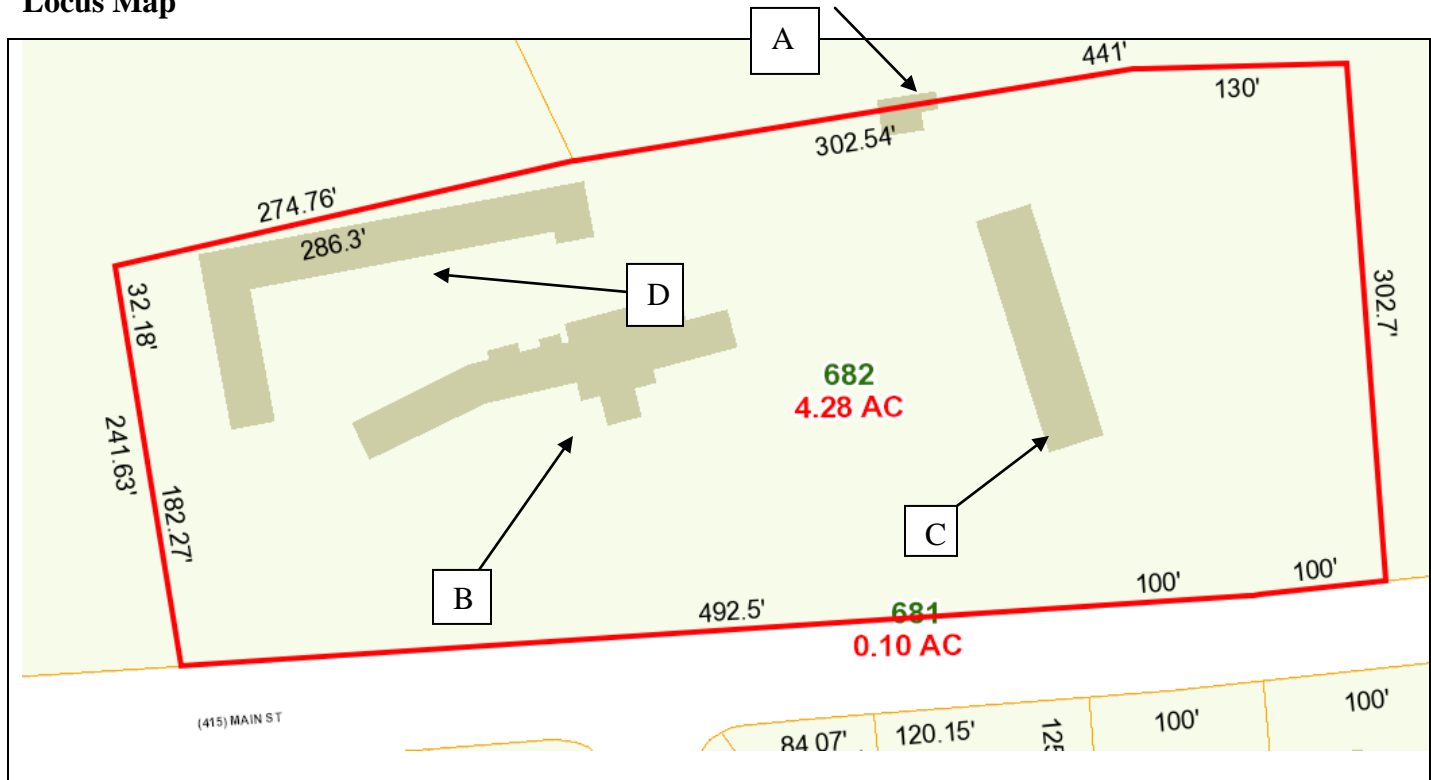
Acreage: 4.28 acres

Recorded by: Bonnie Parsons, PVPC

Organization: Sturbridge Historical Commission

Date (*month/year*): November/2017

Locus Map



INVENTORY FORM A CONTINUATION SHEET

STURBRIDGE

BAY PATH MOTEL

MASSACHUSETTS HISTORICAL COMMISSION

Area Letter Form Nos.

220 MORRISSEY BOULEVARD, BOSTON, MASSACHUSETTS 02125

STU.H

STU.195-199;
STU.911

- ☐ Recommended for listing in the National Register of Historic Places.
If checked, you must attach a completed National Register Criteria Statement form.

Use as much space as necessary to complete the following entries, allowing text to flow onto additional continuation sheets.

ARCHITECTURAL DESCRIPTION

Describe architectural, structural and landscape features and evaluate in terms of other areas within the community.

The Bay Path Motel, located at 682 Main Street, is a complex of five buildings and a swimming pool. The main building (B) is an eleven unit-motel of one story with a center, two-story office section between the 11th and 12 units. It is vinyl-sided and has a brick veneer beneath the south façade windows. The center office has a cantilevered room from the second story of its south façade supported on its south by a two-story brick chimney, which forms a porte-cochere for arriving guests. Both the second story of the office and about seven motel rooms were added to the building on the west end. East of the main Building B is a second large motel unit of two stories under a side-gable roof. Built into a hillside on the east, the west façade is two stories and the east is one story. It also is vinyl-sided and has 21 rooms and dates after 1967. A porch crosses each of the two stories on the west. Building A is an original house that was likely built as accommodations for the owner/residents at the time of the motel construction. It is a one-and-a-half story Cape form house, vinyl-sided. It has a transverse gable of the south façade, one-bay deep and an attached one-story wing on the west that acts as a separate motel room. Building D is an L-shaped, one-story building under end-gables. It has been finished with vinyl and brick to match the main Unit B and contains 15 rooms. It ends on the east with a gambrel roofed garage of two stories. At first story are two bays for vehicles and at second story is a motel room. At the south end of this building, at exposed basement level is a drive-in garage as well. The green house is not identified on the plot plan but is located on the west end of Unit D. It is one story in height, with glass walls and roof and is a traditional greenhouse. The swimming pool is located between buildings B and C.

HISTORICAL NARRATIVE

Explain historical development of the area. Discuss how this relates to the historical development of the community.

The Bay Path Motel was built ca. 1948 on a four and a quarter acre lot. The land owners were William and Flora Bazinet who owned land on both the north and south sides of the highway. William was a carpenter at a print mill in 1940 when he was 60 years old. Flora did not work outside the house. In 1948 they sold the land that lay between Route 20 and Old Brimfield Road on the north to Everard and Irene Lunde, Henry and Lena Sarette, two couples from Southbridge. This was the post-World War II period when Main Street (Route 133) was being developed commercially and residentially and Sturbridge was a growing town and tourist destination. With the development of Old Sturbridge Village the town was visited by many who wished to stay overnight, so investors began building motels to accommodate them. One of the first motels to go up was this, the Bay Path Motel ca. 1948-50; the **Sturbridge Orchard Inn at 12 Haynes Street** followed in 1959. It appears that the two couples jointly built and owned the motel which consisted of a row of wood frame cottages that are now gone behind the main, one-story, building (See B on map and Figure 1). Henry Sarette died before the motel was sold but in 1960 Elmer and Bertha Johnston bought it. The Johnstons ran the motel for about seven years and it is likely that they put in the swimming pool. They sold, however to Florence M. George in 1967 and she turned around in 1972 and sold the complex to George and Margaret Crompton. Between Florence George and the Cromptons, is likely when the motel was upgraded, the row of small units replaced by a large single row of units (D on map), a second floor added to the office space, and the large C unit built. George was born in Liverpool, England and the couple owned the motel for 29 years. George was an avid gardener and it is likely from his ownership that the green house was built and the large gardens in front of the main building created. It has been reported that they were tended during the summers of the 1960s by University of Massachusetts students.

INVENTORY FORM A CONTINUATION SHEET

STURBRIDGE

BAY PATH MOTEL

MASSACHUSETTS HISTORICAL COMMISSION

Area Letter Form Nos.

220 MORRISSEY BOULEVARD, BOSTON, MASSACHUSETTS 02125

STU.H

STU.195-199;
STU.911

BIBLIOGRAPHY and/or REFERENCES

Maps

Bailey, O. H. & Co. Bird's eye view *Sturbridge and Fiskdale*, Massachusetts, 1892.

Beers, F. W. *Plan of Towns of Sturbridge and Southbridge*, 1870.

Richards, L. J. *Atlas of Worcester County*, 1898.

Walling, H. F. *Map of Worcester County*, Wm. E. Baker, Boston, 1857.

Primary Sources

Chase, Nelly M. *Photograph Album*, Joshua Hyde Public Library, Sturbridge.

Secondary Sources

Briere, Robert J. *Recalling Main Street, Sturbridge*, transcript of oral history, 1994.

Burns, Brian. *Sturbridge: A Pictorial History*, Norfolk, 1988.

Clark, Joseph. *Historical Sketch of Sturbridge, Massachusetts*, Brookfield, Massachusetts, 1838.

Corey, Charles F. "Old Houses in Sturbridge" Quinebaug Historical Society Leaflets, vol.1, no. 5, 1900.

Davis, George. *A Historical Sketch of Sturbridge and Southbridge*, West Brookfield, 1856.

Hurd, D. Hamilton. *History of Worcester County, Massachusetts*, vol. 1, Philadelphia 1889.

Izard, Holly. *Old Houses of Sturbridge*, scrapbook, n.d., Joshua Hyde Public Library, Sturbridge.

Massachusetts Historical Commission. *Reconnaissance Survey Report*, "Sturbridge", typescript, 1984

Digital Resources

www.Ancestry.com for federal censuses 1790-1940 and Massachusetts State Censuses 1855, 1865.

<https://dp.la/> Digital Public Library of America

www.masslandrecords.com for deeds.

<http://motelpostcards.blogspot.com/2010/11/bay-path-motel-sturbridge-massachusetts.html>

<http://www.sturbridgecommon.com/2012/06/bay-path-motel.html>

<https://www.cardcow.com/viewall/67268/> (Figure 1)

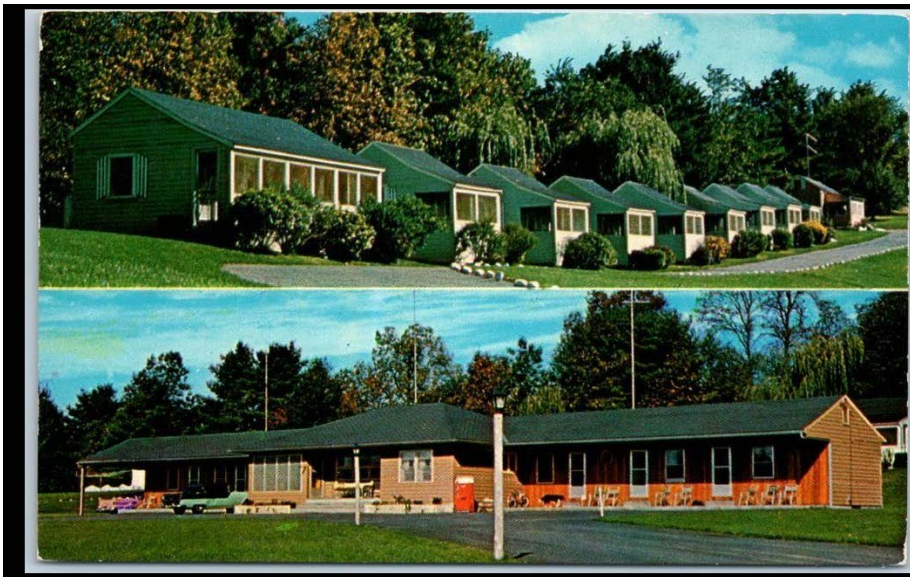


Figure 1: Bay Path Motel Postcard