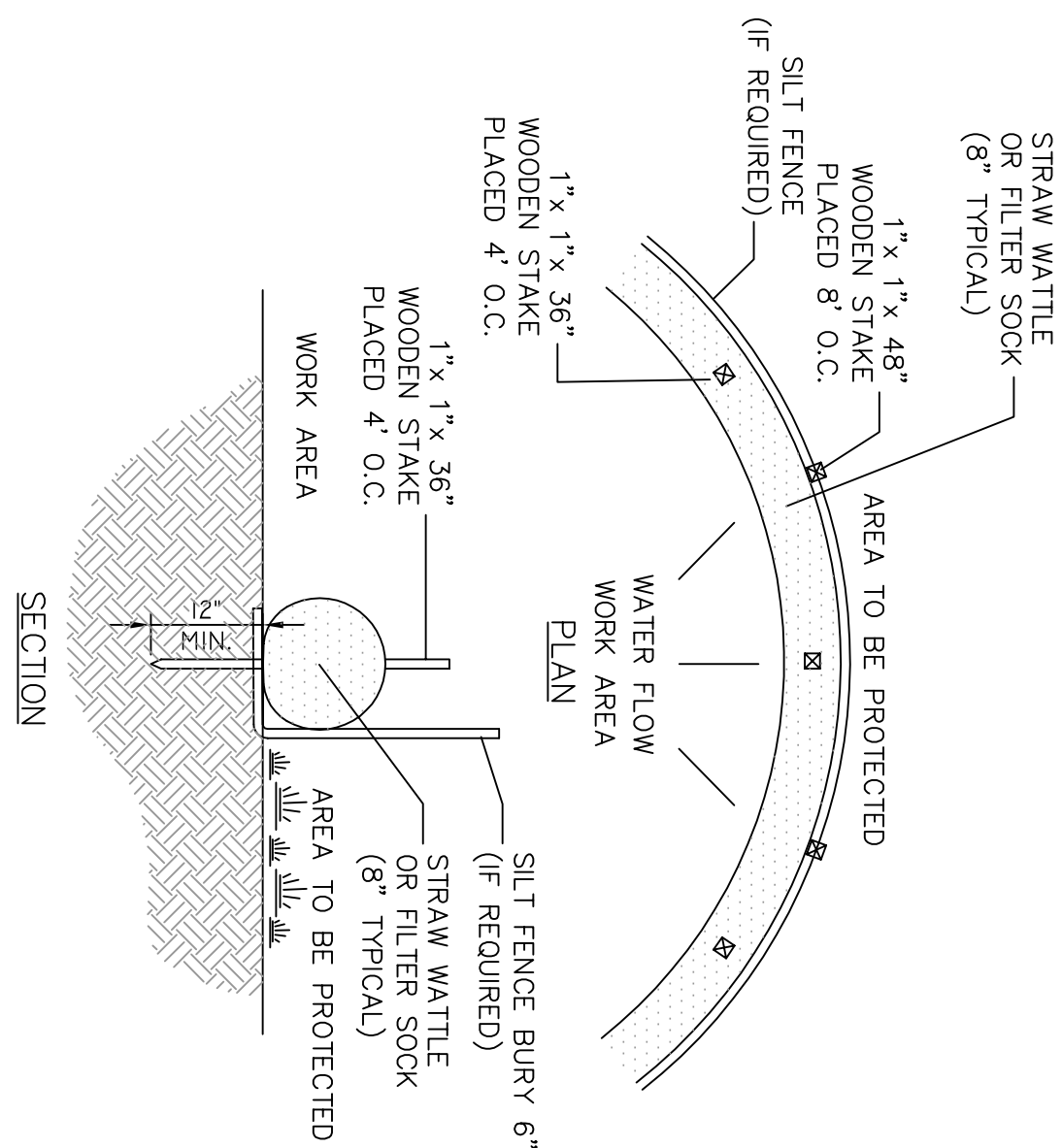


FOR LOCUS SEE PLAN: 14001

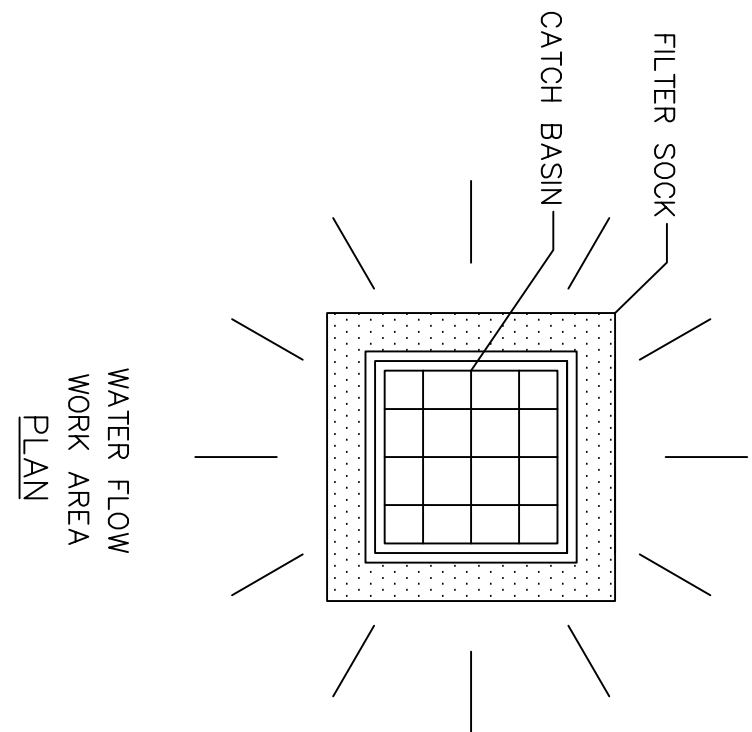
NOTE:

1. EXISTING RETAINING WALL SHALL BE EXCAVATED AND PLACED IN AN ORDERLY PILE AT A LOCATION DETERMINED BY THE ENGINEER AND SHALL BE IMMEDIATELY REMOVED AND DISPOSED OF BY THE CONTRACTOR TO A LOCATION DETERMINED BY THE CONTRACTOR.
2. EXCAVATED EARTH SHALL BE PLACED IN A PILE AT A LOCATION DETERMINED BY THE ENGINEER. IF THE MATERIAL IS DEEMED SUITABLE FOR BACKFILLING THE RETAINING WALL BY THE ENGINEER, IT SHALL BE RETAINED ON SITE. RETAINED MATERIAL SHALL HAVE APPROPRIATE MEASURES OF CONTAINMENT TO PREVENT THE SPREAD OF EROSION DURING CONSTRUCTION. UNSUITABLE MATERIAL SHALL BE IMMEDIATELY REMOVED AND DISPOSED OF BY THE CONTRACTOR TO A LOCATION DETERMINED BY THE CONTRACTOR.
3. CONTRACTOR TO EXCAVATE AND REGRADE EXPOSED EARTH TO BE RETAINED AS SHOWN IN THE DETAILS.



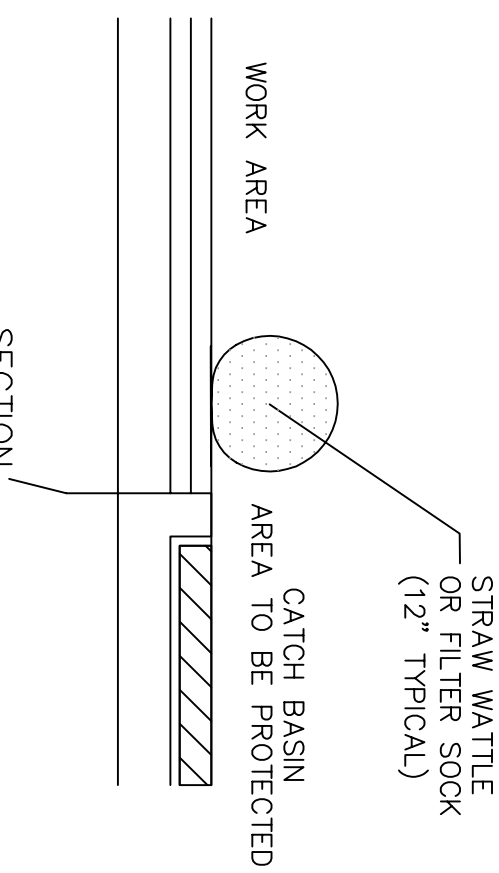
EROSION CONTROL BARRIER (ECB)

SCALE: N.T.S.



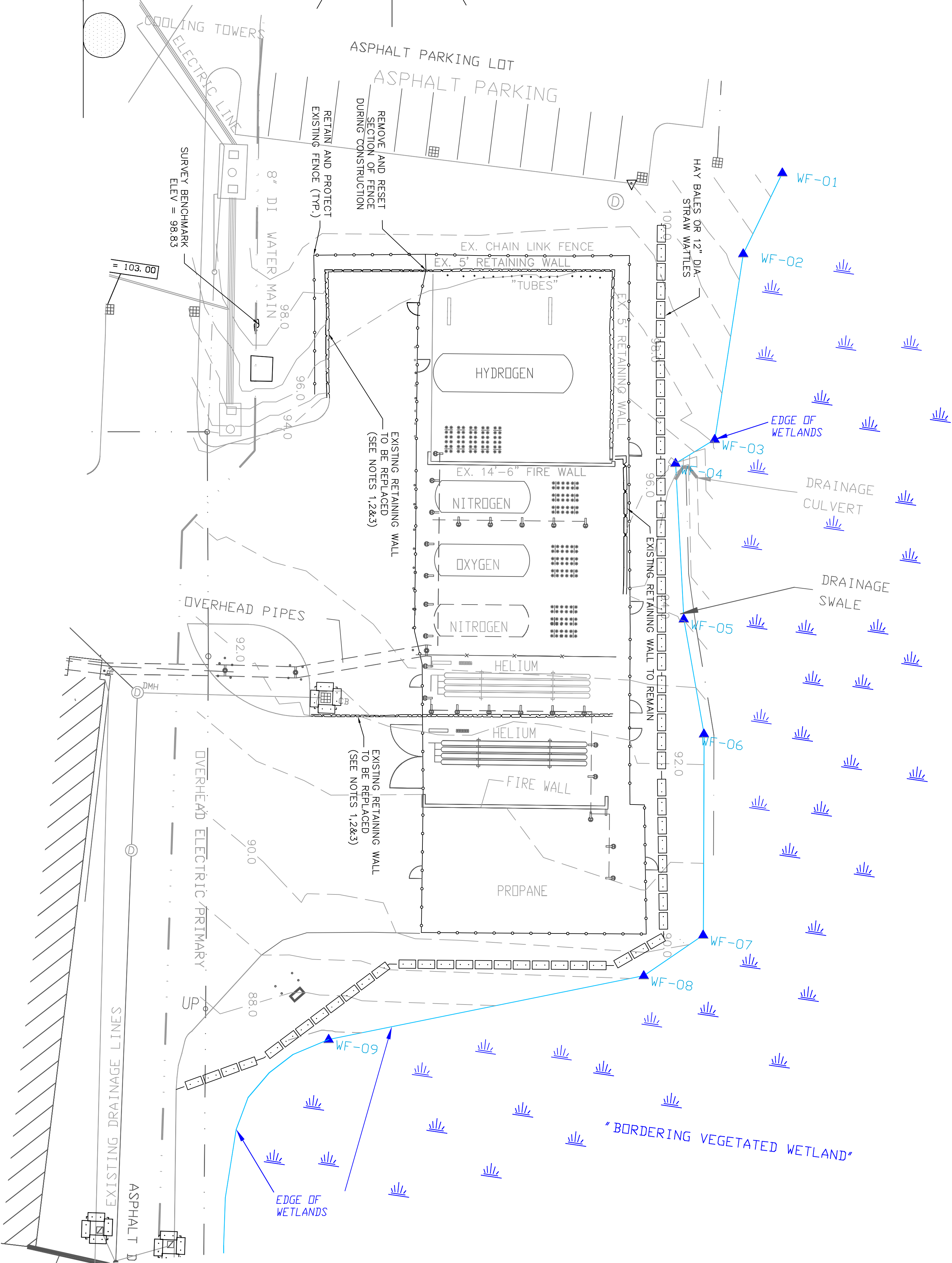
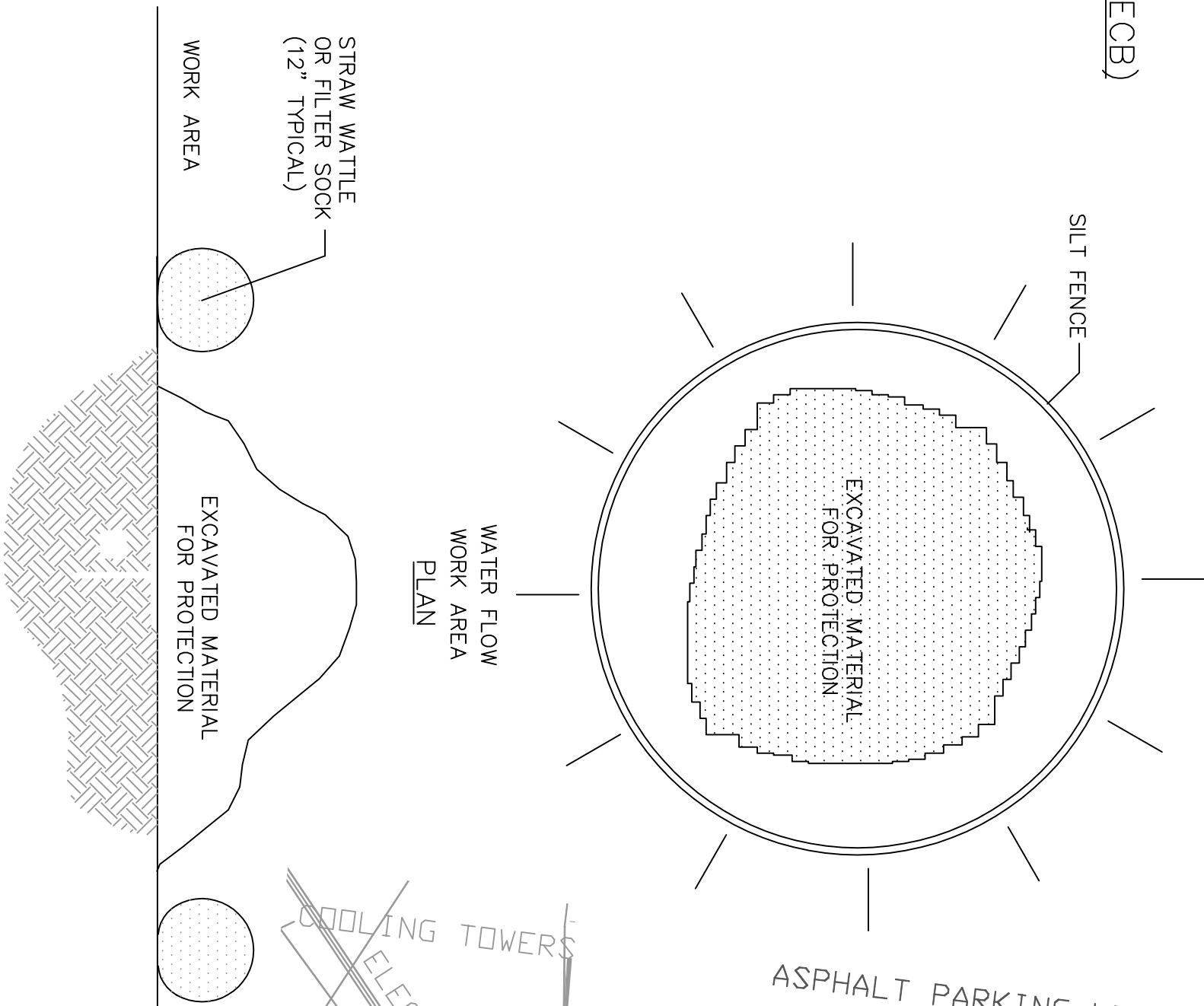
EROSION CONTROL BARRIER AT CATCH BASIN (ECB)



SCALE: N.T.S.



SECTION
EROSION CONTROL BARRIER
AT EXCAVATED MATERIAL (ECB)

SCALE: N.T.S



ORIGINAL		REVISIONS				 JALBERT ENGINEERING, INC. CIVIL ENGINEERS & SURVEYORS 54 Main Street Sturbridge, Massachusetts 01566-1744 Telephone: (508) 347-5136 • Toll Free: 1-800-339-5136 Fax: (508) 347-7962	<i>RETAINING WALL REPLACEMENT</i> <i>OFS HOTEL, LLC</i> <i>50 HALL ROAD</i> <i>STURBRIDGE, MA 01566</i> 	PLAN DATE:	2/5/18	
DATE 2/5/18	BY REV.	DATE	DESCRIPTION	MADE	CHK'D			APVD	DWG NUMBER	18020-1
DRAFTED BY: ZMH									REVISION 0	
CHECKED										
SUPERVISOR										
REVIEWED										
REVIEWED										